

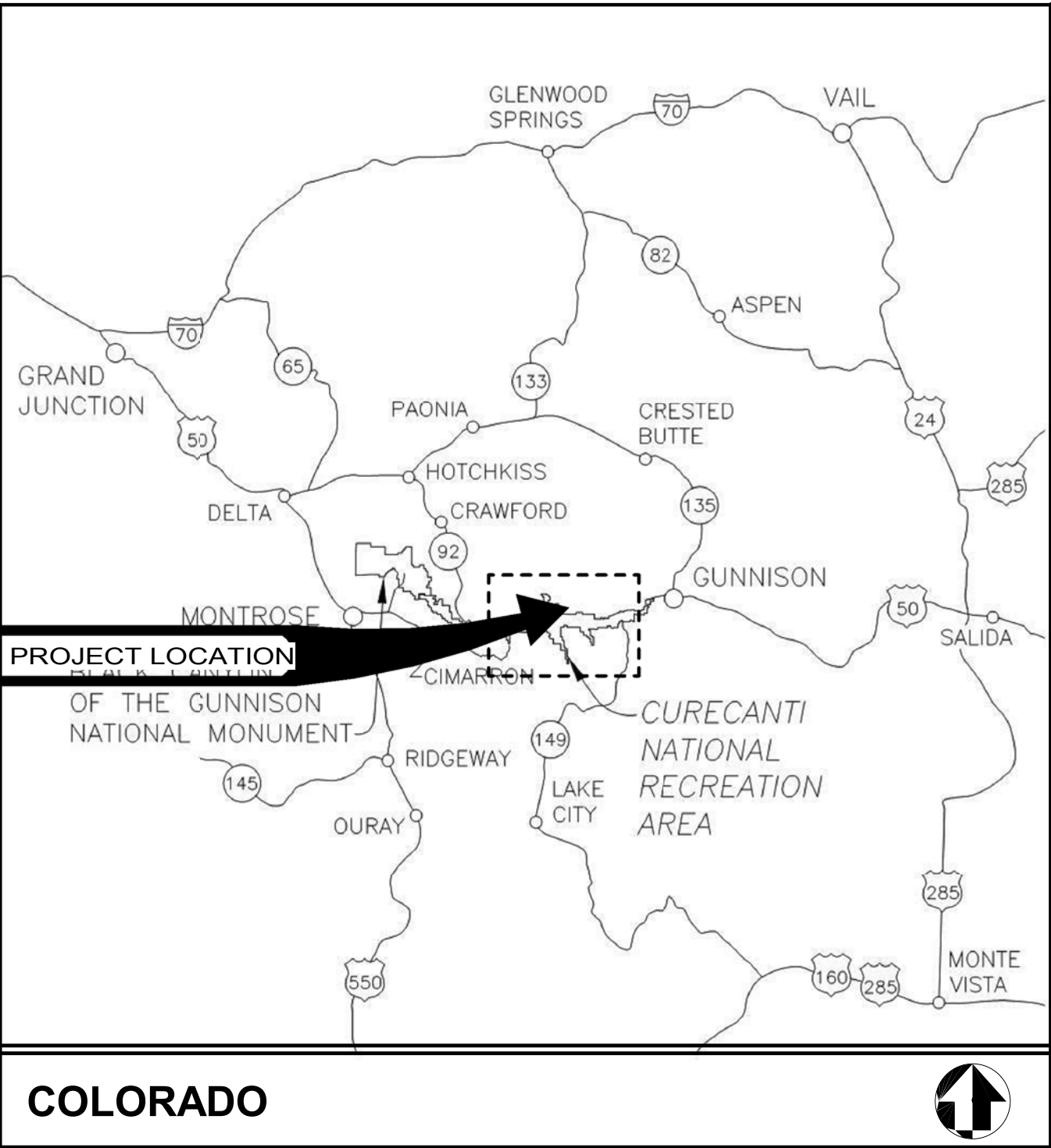
6/3/2020 10:23:07 AM C:\Users\brandongossard\Documents\CURE - VC Rehabilitation - CD_NEW_brandongossard@andarch.com.rvt



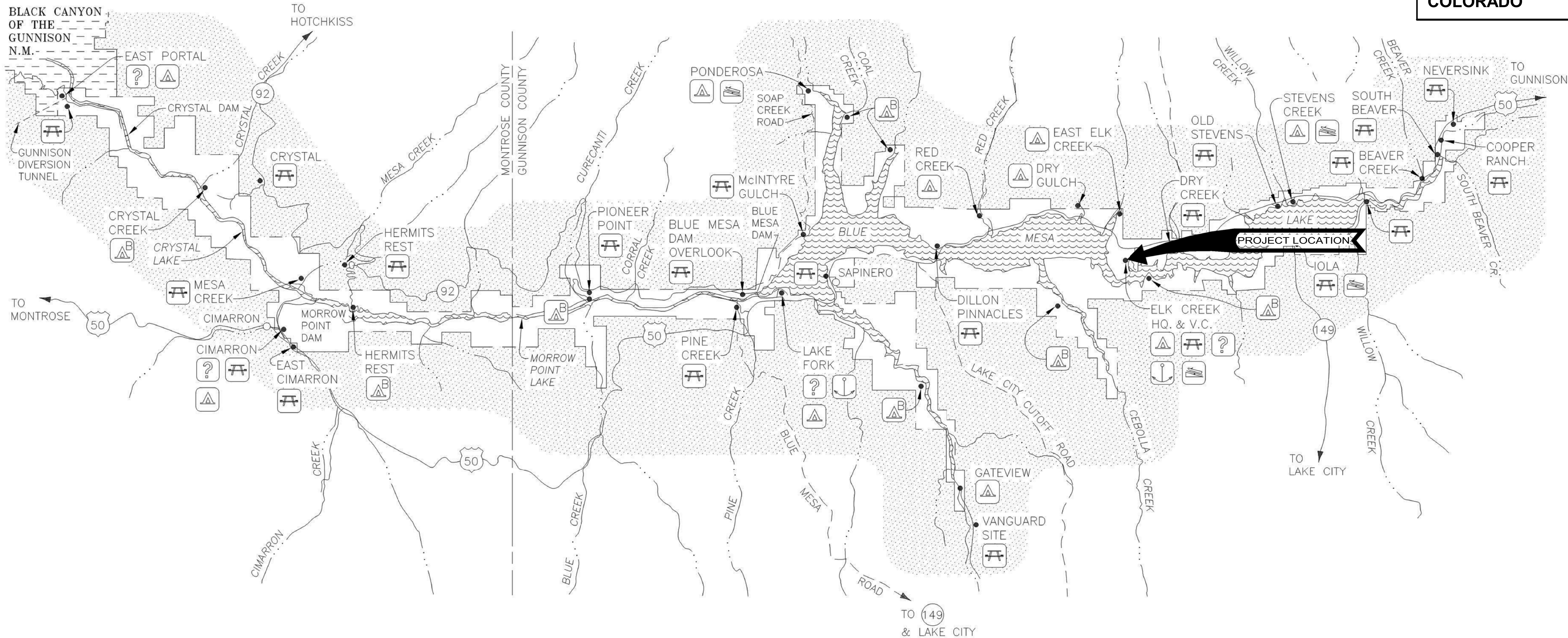
ELK CREEK VISITOR CENTER C.A. 1968



ELK CREEK VISITOR CENTER C.A. 1968



COLORADO



CURECANTI NATIONAL RECREATION AREA

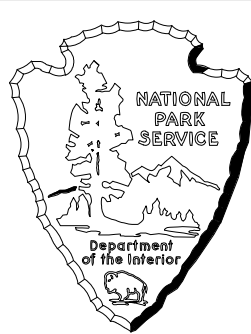
PMIS 187989

ARCHITECT
ANDERSON HALLAS ARCHITECTS, PC
GOLDEN, CO 80401

SURVEYOR
MARTIN/MARTIN, INC.
LAKEWOOD, CO 80215

Mark	Sheet	REVISION	Date	Initial

QUALITY DESIGN CERTIFICATION	
<input type="checkbox"/> Prepared in Accordance with Preliminary Design (Title I)	Drawing No.
<input type="checkbox"/> Variance from Preliminary Design (Title I)	Approved by Superintendent on
<input type="checkbox"/> Approved by Superintendent on	Date
<input type="checkbox"/> Construction Drawing Not Preceded by Preliminary Design (Title I)	
Project Manager	Date



FINAL CD	
UNITED STATES	DEPARTMENT OF THE INTERIOR
NATIONAL PARK SERVICE	DENVER SERVICE CENTER

TITLE OF DRAWING		
REHAB VISITOR CENTER		
LOCATION WITHIN PARK		
ELK CREEK VISITOR CENTER		
NAME OF PARK		
CURECANTI NATIONAL REC. AREA		
REGION	COUNTY	STATE
MOUNTAIN - 6	GUNNISON	COLORADO

DRAWING NO.	616
128446	
PMIS/PKG NO.	187989
SHEET	1
OF	145

6/3/2020 10:23:10 AM C:\Users\brandongossard\Documents\CURE - VC Rehabilitation - CD_NEW_brandongossard@andarch.com.rvt

ABBREVIATIONS

# &	POUND(S) or NUMBER	HVAC	HEATING, VENTILATION and AIR CONDITIONING
<	ANGLE	IBC	INTERNATIONAL BUILDING CODE
@	AT	ID	INSIDE DIAMETER
A/V	AUDIO VISUAL	INFO	INFORMATION
ABA	ARCHITECTURAL BARRIERS ACT	INS	INSULATION or INSULATED
ABV	ABOVE	INT	INTERIOR
ACM	ASBESTOS CONTAINING MATERIAL	JT	JOINT
ACT	ACCOUSTICAL CEILING TILE	LAV	LAVATORY
ADD	ADDENDUM	LIN	LINOLEUM
ADJ	ADJACENT or ADJUSTABLE	MATL	MATERIAL
AFF	ABOVE FINISHED FLOOR	MAX	MAXIMUM
AHU	AIR HANDLING UNIT	MECH	MECHANICAL
AL	ALUMINUM	MEP	MECHANICAL, ELECTRICAL AND PLUMBING
ALT	ALTERNATE	MFG	MANUFACTURING
APPROX	APPROXIMATE(LY)	MFR	MANUFACTURER
ARCH	ARCHITECTURAL	MIN	MINIMUM
ASPH	ASPHALT	MISC	MISCELLANEOUS
B.O.	BOTTOM OF	MO	MASONRY OPENING
BD	BOARD	MTD	MOUNTED
BLDG	BUILDING	MTL	METAL
BLKG	BLOCKING	<N>	NEW
BR	BACKER ROD	N	NORTH
BTWN	BETWEEN	NA	NOT APPLICABLE
C.O.	CONTRACTING OFFICER	NIC	NOT IN CONTRACT
CAB	CABINET	NO.	NUMBER
CJ	CONTROL JOINT	NOM	NOMINAL
CL	CENTERLINE	NTS	NOT TO SCALE
CLG	CEILING	OC	ON CENTER
CLR	CLEAR	OD	OUTSIDE DIAMETER
CMU	CONCRETE MASONRY UNIT	OH	OPPOSITE HAND
COL	COLUMN	OPNG	OPENING
CONC	CONCRETE	OPP	OPPOSITE
CONST	CONSTRUCTION	OSB	ORIENTED STRAND BOARD
CONT	CONTINUOUS	PLAM	PLASTIC LAMINATE
CORR	CORRIDOR	PLAS	PLASTER
CPT	CARPET	PLUMB	PLUMBING
CT	CERAMIC TILE	PMMA	POLYMETHYL METHACRYLATE
CTBB	CEMENTITIOUS TILE BACKER BOARD	PT	PAINT
		PTD	PAINTED
CTR	CENTER	PWD	PLYWOOD
DBL	DOUBLE	QT	QUARRY TILE
DEMO	DEMOLITION	RAD	RADIUS
DET	DETAIL	RB	RUBBER BASE
DF	DRINKING FOUNTAIN	RCP	REFLECTED CEILING PLAN
DIAM	DIAMETER	RD	ROOF DRAIN
DIM	DIMENSION	RE	REFER TO or REFERENCE
DN	DOWN	REINF	REINFORCED
DS	DOWNSPOUT	RELOC	RELOCATE(D)
<E>	EXISTING	REQ	REQUIRED
E	EAST	REV	REVISE, REVISED or REVISION
EA	EACH	RM	ROOM
EG	FOR EXAMPLE	RO	ROUGH OPENING
ELEC	ELECTRICAL	RS	ROUGH SAWN
ELEV	ELEVATION	(S)	SEALANT
EMER	EMERGENCY	S	SOUTH
ENGR	ENGINEER	SC	SCUPPER
EQ	EQUAL	SCHED	SCHEDULE
EQP	EQUIPMENT	SF	SQUARE FEET
ETR	EXISTING TO REMAIN	SHTG	SHEATHING
EXT	EXTERIOR	SIM	SIMILAR
FACP	FIRE ALARM CONTROL PANEL	SOG	SLAB ON GRADE
FD	FLOOR DRAIN	SPEC	SPECIFICATION(S)
FE	FIRE EXTINGUISHER	SQ	SQUARE
FEC	FIRE EXTINGUISHER CABINET	SS	STAINLESS STEEL
FIN	FINISH(ED)	STD	STANDARD
FIXT	FIXTURE	STL	STEEL
FLR	FLOOR(ING)	STN	STAIN
FO	FACE OF	STRUC	STRUCTURE or STRUCTURAL
FP	FIRE PROTECTION	(T)	TEMPERED
FRP	FIBERGLASS REINFORCED PANEL(ING)	T&G	TONGUE AND GROOVE
		T.O.	TOP OF
FT	FEET	TD	THRESHOLD
FTG	FOOTING	TYP	TYPICAL
FURR	FURRING	UON	UNLESS OTHERWISE NOTED
GA	GAUGE OR GYPSUM ASSOCIATION	VB	VAPOR BARRIER
		VCT	VINYL COMPOSITION TILE
GALV	GLAVANIZED	VERT	VERTICAL
GC	GENERAL CONTRACTOR	VIF	VERIFY IN FIELD
GD	GRADE	VIN	VINYL
GL	GLASS or GLAZING	VTR	VENT THROUGH ROOF
GND	GROUND	W	WEST
GWB	GYPSUM WALLBOARD	W/	WITH
GYP	GYPSUM	W/O	WITHOUT
HM	HOLLOW METAL	WD	WOOD
HAZMAT	HAZARDOUS MATERIAL	WIN	WINDOW
HDR	HEADER	WOM	WALK-OFF MAT
HDW	HARDWARE		
HORIZ	HORIZONTAL		
HT	HEIGHT		

INDEX

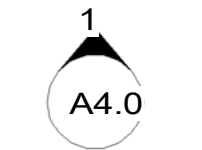
SHEET #	SUB. SHEET	SHEET NAME
GENERAL		
1	G0.0	COVER SHEET
2	G0.1	GENERAL INFORMATION
3	G0.2	CODE STUDY
4	G0.3	EGRESS/CODE PLAN
5	G0.4	ACCESSIBILITY PLAN
6	G0.5	PRESERVATION PLAN
7	G0.6	STAGING OVERVIEW PLAN
8	G0.7	STAGING PLAN - LOW SEASON
9	G0.8	STAGING PLAN - HIGH SEASON
10	G0.9	WALL TYPES
CIVIL		
11	C0.1	NOTES
12	C0.2	NOTES
13	C0.3	EXISTING CONDITIONS PLAN
14	C0.4	EXISTING CONDITIONS PLAN
15	C0.5	UTILITY DEMOLITION PLAN
16	C1.0	PARKING LOT GRADING PLAN
17	C2.0	OVERALL UTILITY PLAN
18	C2.1	WATER PROFILES
19	C3.0	EROSION CONTROL PLAN
20	C3.1	EROSION CONTROL DETAILS
21	C3.2	EROSION CONTROL DETAILS
22	C4.0	PAVING AND SIGNAGE PLAN
23	C5.0	HORIZONTAL CONTROL PLAN
24	C6.0	SITE DETAILS
25	C6.1	SITE DETAILS
26	C6.2	SITE DETAILS
27	C6.3	SITE DETAILS
28	C6.4	SITE DETAILS
LANDSCAPE		
29	L1.1	OVERALL SITE PLAN
30	L1.2	SITE DEMOLITION PLAN
31	L1.3	SITE DEMOLITION PLAN ENLARGEMENT
32	L1.4	SITE MATERIALS PLAN
33	L1.5	SITE MATERIALS PLAN ENLARGEMENT
34	L1.6	SITE COORDINATE POINT PLAN
35	L1.7	SITE COORDINATE POINT PLAN ENLARGEMENT
36	L1.8	SITE GRADING PLAN
37	L1.9	SITE GRADING PLAN ENLARGEMENT
38	L1.10	SITE PLANTING PLAN
39	L1.11	SITE PLANTING PLAN ENLARGEMENT
40	L1.12	SITE PLANTING SCHEDULE AND NOTES
41	L2.1	SITE DETAILS
42	L2.2	SITE DETAILS
43	L2.3	SITE DETAILS
44	L2.4	SITE DETAILS
45	L2.5	SITE DETAILS
46	IR 1	IRRIGATION PLAN
47	IR.2	IRRIGATION PLAN
48	IR.3	IRRIGATION DETAILS
49	IR.4	IRRIGATION DETAILS
50	IR.5	IRRIGATION DETAILS
DEMO		
51	AD1.0	GROUND FLOOR DEMO PLAN
52	AD1.1	GROUND FLOOR DEMO RCP
53	AD1.2	MAIN FLOOR DEMO PLAN
54	AD1.3	MAIN FLOOR DEMO RCP
ARCHITECTURAL		
55	A1.0	GROUND FLOOR PLAN
56	A1.1	GROUND FLOOR RCP
57	A1.2	MAIN FLOOR PLAN
58	A1.3	MAIN FLOOR RCP
59	A1.4	ROOF PLAN
60	A1.5	RAMP WORK PLANS AND SECTIONS
61	A2.0	EXTERIOR ELEVATIONS
62	A3.0	BUILDING SECTIONS
63	A3.1	VERTICAL CIRCULATION
64	A3.2	VERTICAL CIRULATION
65	A4.0	GROUND FLOOR RESTROOMS
66	A4.1	MAIN FLOOR RESTROOMS
67	A4.2	BREAK ROOM CASEWORK
68	A4.3	CASEWORK ELEVATIONS
69	A4.4	CASEWORK ELEVATIONS
70	A4.5	CASEWORK AT VISITOR CONTACT DESK
71	A4.6	CASEWORK - VISITOR CONTACT DESK SECTIONS, DETAILS
72	A5.0	WALL SECTIONS
73	A5.1	WALL SECTION DETAILS
74	A6.0	FURNITURE PLAN
75	A6.1	FINISH SCHEDULE & PLAN
76	A6.2	DOOR SCHEDULE
77	A6.3	WINDOW SCHEDULE

GENERAL NOTES

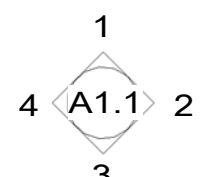
- DO NOT SCALE DRAWINGS
- ALL WORK TO BE PERFORMED TO APPLICABLE BUILDING CODES (SEE LIST OF APPLICABLE CODES).
- ALL WORK SHALL BE COMPLETED IN ACCORDANCE WITH THE SECRETARY OF THE INTERIOR STANDARDS FOR REHABILITATION.
- ALL DIMENSIONS ARE TO FACE OF STRUCTURE UNLESS OTHERWISE NOTED. ALL DIMENSIONS INDICATING REQUIRED CLEARANCES ARE TO FACE OF FINISH UNLESS OTHERWISE NOTED.
- THE CONTRACTOR SHALL BE RESPONSIBLE FOR FAMILIARIZING HIM OR HERSELF WITH THE CONTRACT DOCUMENTS, VERIFYING FIELD CONDITIONS AND DIMENSIONS, AND CONFIRMING THAT THE WORK MAY BE ACCOMPLISHED AS SHOWN PRIOR TO PROCEEDING WITH CONSTRUCTION. CONTRACTOR SHALL NOTIFY C.O. IN WRITING OF ANY DISCREPANCY WITHIN THE CONTRACT DOCUMENTS AND REQUEST CLARIFICATION PRIOR TO PROCEEDING WITH CONSTRUCTION.
- SHOULD THERE BE ANY QUESTIONS CONCERNING THE CONTRACT DOCUMENTS, EXISTING CONDITIONS, AND/OR DESIGN INTENT, THE CONTRACTOR SHALL BE RESPONSIBLE FOR OBTAINING A CLARIFICATION FROM THE C.O. PRIOR TO PROCEEDING WITH THE WORK, OR RELATED WORK IN QUESTION.
- THE CONTRACTOR SHALL BE RESPONSIBLE FOR FAMILIARIZING HIMSELF WITH THE PROJECT SCOPE OF WORK, SCHEDULE, AND DEADLINES. THE CONTRACTOR SHALL BE RESPONSIBLE FOR ADVISING THE C.O. OF ALL ITEMS REQUIRING A LONG LEAD TIME UPON NOTICE TO PROCEED THAT WILL AFFECT THE SCHEDULE, AND SHALL SUBMIT ORDER CONFIRMATIONS AND DELIVERY DATES FOR THE ITEMS IN QUESTION TO THE C.O.
- INSTALL ALL MANUFACTURED ITEMS, MATERIALS, AND EQUIPMENT IN STRICT ACCORDANCE WITH THE MANUFACTURER'S RECOMMENDED SPECIFICATIONS, EXCEPT WHERE THE CONTRACT DOCUMENTS ARE MORE STRINGENT. ANY MISCELLANEOUS ITEMS OR MATERIALS NOT SPECIFICALLY NOTED, BUT REQUIRED FOR PROPER INSTALLATION SHALL BE FURNISHED AND INSTALLED BY THE CONTRACTOR. THE CONTRACTOR SHALL FURNISH TO THE C.O. ALL WARRANTIES AND GUARANTEES REQUIRED AT THE CONCLUSION OF THE PROJECT.

78	A9.0	ROOF DETAILS
79	A9.1	ROOF DETAILS
80	A9.2	INTERIOR DETAILS
81	A9.3	STOREFRONT DETAILS
82	A9.4	STOREFRONT DETAILS
83	A9.5	RAMP DETAILS
84	A9.6	WALL DETAILS
85	A9.7	DOOR AND WINDOW DETAILS
STRUCTURAL		
86	S0.1	ABBREVIATIONS AND SYMBOLS
87	S0.2	STRUCTURAL GENERAL NOTES
88	S0.3	STRUCTURAL GENERAL NOTES
89	S0.4	STRUCTURAL GENERAL NOTES
90	S1.0	FOUNDATION AND GROUND FLOOR PLAN
91	S1.2	MAIN FLOOR FRAMING PLAN
92	S1.4	ROOF FRAMING PLAN
93	S1.0	TYPICAL DETAILS
94	S5.1	DETAILS
95	S5.2	DETAILS
MECHANICAL		
96	M0.0	MECHANICAL COVER SHEET
97	M0.1	MECHANICAL SCHEDULES
98	M0.2	MECHANICAL SCHEDULES
99	M0.3	MECHANICAL DETAILS
100	M0.4	MECHANICAL CONTROLS
101	M0.5	MECHANICAL COMMCKECK
102	M1.0	MECHANICAL GROUND FLOOR DEMO PLAN
103	M1.1	MECHANICAL MAIN FLOOR DEMO
104	M2.0	MECHANICAL GROUND FLOOR PLAN
105	M2.1	MECHANICAL MAIN FLOOR PLAN
106	M2.2	MECHANICAL MAIN FLOOR CEILING PLAN
PLUMBING		
107	P0.0	PLUMBING COVER SHEET
108	P0.1	PLUMBING SCHEDULES
109	P0.2	PLUMBING CALCS
110	P0.3	PLUMBING ISOMETRICS
111	P0.4	PLUMBING DETAILS
112	P1.0	PLUMBING GROUND FLOOR DEMO PLAN
113	P1.1	PLUMBING MAIN FLOOR DEMO PLAN
114	P2.0	PLUMBING GROUND FLOOR PLAN
115	P2.1	PLUMBING MAIN FLOOR PLAN
116	P3.0	WASTE AND VENT PIPING PLAN
ELECTRICAL		
117	E0.0	ELECTRICAL COVER SHEET
118	E0.1	ELECTRICAL COVER SHEET
119	E0.2	ELECTRICAL SITE PLAN
120	ED0.2	ELECTRICAL DEMO SITE PLAN
121	ED1.0	ELECTRICAL GROUND FLOOR DEMO PLAN
122	ED1.2	ELECTRICAL MAIN FLOOR DEMO PLAN
123	E1.0	ELECTRICAL GROUND FLOOR NEW POWER PLAN
124	E1.2	ELECTRICAL MAIN FLOOR NEW POWER PLAN
125	E2.0	ELECTRICAL GROUND FLOOR NEW LIGHTING PLAN
126	E2.1	ELECTRICAL MAIN FLOOR NEW LIGHTING PLAN
127	E3.0	TECHNOLOGY ENLARGED IT RACK ROOM
128	E3.1	TECHNOLOGY ENLARGED IT CRAWL SPACE
129	E3.2	TECHNOLOGY ENLARGED AV ROOM
130	E4.0	ELECTRICAL ONE LINE DIAGRAM
131	E5.0	ELECTRICAL SCHEDULES
132	E6.0	ELECTRICAL PANEL SCHEDULES
133	E7.0	ELECTRICAL DETAILS
134	E7.1	ELECTRICAL DETAILS
135	E7.2	TECHNOLOGY DETAILS
136	E7.3	TECHNOLOGY DETAILS
FIRE PROTECTION		
137	FA0.1	SYMBOL LIST AND GENERAL NOTES - FIRE ALARM
138	FA1.0	GROUND FLOOR PLAN - FIRE ALARM
139	FA1.1	MAIN FLOOR PLAN - FIRE ALARM
140	FA5.1	DETAILS - FIRE ALARM
141	FP0.1	SYMBOL LIST AND GENERAL NOTES - FIRE PROTECTION
142	FP1.0	GROUND FLOOR RCP - FIRE PROTECTION
143	FP1.1	MAIN FLOOR RCP - FIRE PROTECTION
144	FP4.1	SECTIONS - FIRE PROTECTION
145	FP5.1	DETAIL - FIRE PROTECTION

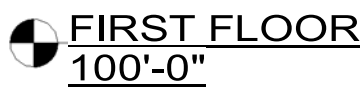
SYMBOLS



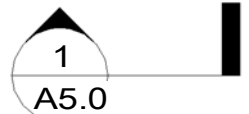
EXTERIOR ELEVATION



INTERIOR ELEVATION



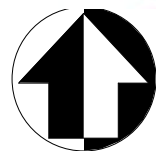
ELEVATION MARK



BUILDING SECTION



DETAIL REFERENCE



NORTH ARROW



ROOM TAG



KEY NOTE



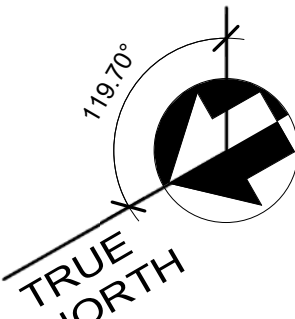
WALL TYPE



WINDOW TYPE/NUMBER



DOOR NUMBER



PROJECT NORTH

FINAL CD FOR CONSTRUCTION	DESIGNED: BH/BRG	SUB SHEET NO. G0.1	TITLE OF SHEET GENERAL INFORMATION ELK CREEK VISITOR CENTER CURECANTI NATIONAL RECREATION AREA	DRAWING NO. 616 128446
	GAAD DAM/LWB			PMIS/PKG NO. 187989
	TECH REVIEW: BH/EH			SHEET
	DATE: 06/01/2020			2 OF 145



6/3/2020 10:23:12 AM C:\Users\brandongossard\Documents\CURE - VC Rehabilitation - CD_NEW_brandongossard@andarch.com.rvt

SITE ACCESSIBILITY CODE:

UNITED STATES ACCESS BOARD, ARCHITECTURAL BARRIERS ACT ACCESSIBILITY STANDARD (ABAAS)
UNITED STATES ACCESS BOARD, OUTDOOR DEVELOPED AREAS
INTERNATIONAL BUILDING CODE (IBC) 2018
INTERNATIONAL EXISTING BUILDING CODE (IEBC) 2018

PAVEMENT WIDTH:
5'-0" MINIMUM CLEAR WIDTH PROVIDED AT THE SIDEWALKS AND COURTYARD

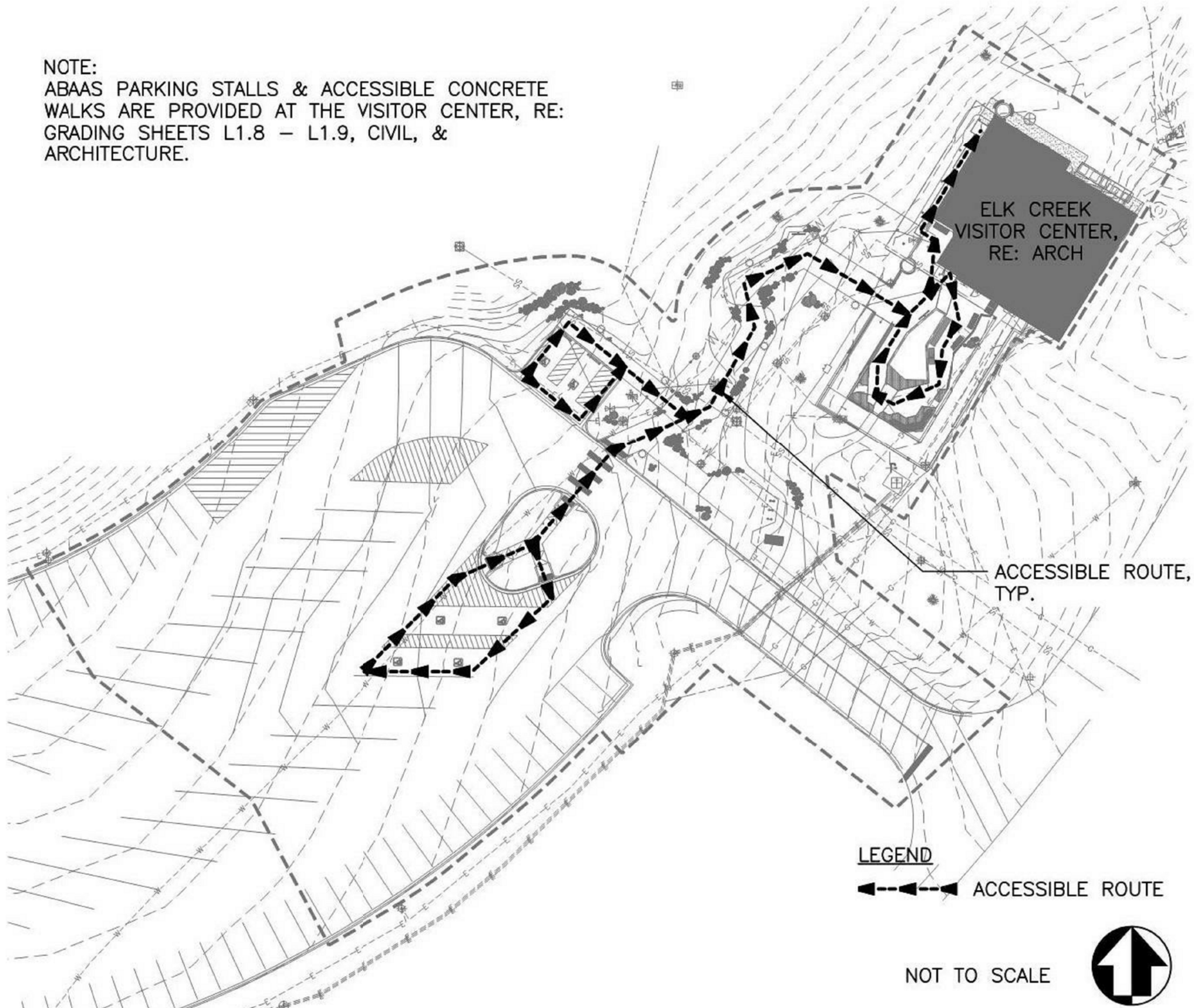
PAVEMENT SLOPE:
SITE SLOPES COMPLY WITH THE FOLLOWING DESIGN REQUIREMENTS.

RAMPS: 1:13.3 = 7.5% MAX
WALKING SURFACES: 1:25 = 4.0% MAX
PARKING: 1:66.6 = 1.5% MAX
LEVEL AREAS 1:66.6 = 1.5% MAX
CROSS-SLOPE 1:66.6 = 1.5% MAX

ACCESSIBLE PARKING STALLS:
THE FOLLOWING NUMBER OF PARKING STALLS ARE PROVIDED:
(2) ACCESSIBLE PARKING STALLS
(1) VAN ACCESSIBLE STALL
(1) STANDARD ACCESSIBLE STALL
(2) ACCESSIBLE OVERSIZED PARKING STALLS

ACCESSIBLE PARKING STALLS SHALL COMPLY WITH CHAPTER 5: GENERAL SITE AND BUILDING ELEMENTS, SECTION 502:
PARKING SPACES OF THE UNITED STATES ACCESS BOARD, ABA STANDARDS.

NOTE:
ABAAS PARKING STALLS & ACCESSIBLE CONCRETE
WALKS ARE PROVIDED AT THE VISITOR CENTER, RE:
GRADING SHEETS L1.8 – L1.9, CIVIL, &
ARCHITECTURE.



1 SITE ACCESSIBILITY PLAN
G0.2 NTS

CODE ANALYSIS

THE FOLLOWING CODES AND STANDARDS ARE UTILIZED FOR THE DESIGN BASIS:

BUILDING CODE: 2018 INTERNATIONAL EXISTING BUILDING CODE (IEBC)
2018 INTERNATIONAL BUILDING CODE (IBC)
2018 INTERNATIONAL ENERGY CONSERVATION CODE (IECC)
2018 INTERNATIONAL PLUMBING CODE (IPC)
SECRETARY OF THE INTERIOR STANDARDS FOR REHABILITATION
ASHRAE 90.1 – 2013
ASHRAE 62.1 – 2004
NPS SUSTAINABILITY GUIDELINES
NATIONAL ELECTRIC CODE (NEC), 2014
INTERNATIONAL MECHANICAL CODE, 2015
NPFA 101, LIFE SAFETY CODE
NPFA 13, STANDARD FOR INSTALLATION OF SPRINKLERS
ARCHITECTURAL BARRIERS ACT ACCESSIBILITY STANDARDS (ABAAS)

OCCUPANCY: A-3: ASSEMBLY
B: BUSINESS

CONSTRUCTION TYPE: VB, FULLY-SPRINKLED PER NFPA 13

BUILDING HEIGHT: 32'-5" (MAX ALLOWABLE 60' WITH FIRE SPRINKLER
SYSTEM)
PER TABLE 504.3

NUMBER OF STORIES: 2 (MAX ALLOWABLE 2)
PER TABLE 504.4

ALLOWABLE BUILDING AREA: 18,000SF (TYPE VB, A-3 OCCUPANCY, SM)
PER TABLE 506.2

BUILDING AREA:
LOWER LEVEL: 2,548 SF
UPPER LEVEL (EXHIBIT, OFFICES, OBSERVATION DECK): 4,150 SF
TOTAL: 6,698 SF

OCCUPANT LOAD:
MULTI-PURPOSE ROOM: 82 (1,228 SF / 15)
BREAK ROOM: 1 (110 SF / 150)
EXHIBIT/INTERP. AREA 38 (1,125 SF / 30)
OFFICE AREA 11 (1,605 SF / 150)
EXTERIOR OBSERVATION DECK 72 (1,076 SF/15)
STORAGE 1 (283 SF / 300)
MECHANICAL / ELECTRICAL ROOM: 2 (592 SF / 300)
TOTAL BUILDING OCCUPANTS: 207

FIRE SPRINKLER SYSTEM NOT REQUIRED BY OCCUPANCY PER 903.2.1.3 BUT NEEDED
BASED ON OTHER ASPECTS OF THE CODE AND NPS REQUIREMENTS.

FIRE EXTINGUISHERS REQUIRED PER SECTION 906, AND LOCATED PER IFC TABLE 906.1

FIRE ALARM SYSTEM IS PROVIDED IN ACCORDANCE WITH 907.2.1

FIRE RATING: TYPE VB
PER TABLE 601 AND 602

	REQUIRED	PROVIDED
STRUCTURAL FRAME	0	0
EXTERIOR BEARING WALLS - EXTERIOR X= DISTANCE TO ADJACENT BUILDINGS		
5'<X<10'	1	N/A
10'<X<30'	0	0
INTERIOR BEARING WALLS	0	0
EXTERIOR NON-BEARING WALLS & PARTITIONS - X= DISTANCE TO ADJACENT BUILDINGS		
5'<X<10'	1	N/A
10'<X<30'	0	0
NON-BEARING WALLS & PARTITIONS		
INTERIOR	0	0
FLOOR CONSTRUCTION	0	0
ROOF CONSTRUCTION	0	0

MEANS OF EGRESS:
MINIMUM NUMBER OF EXITS FOR OCCUPANT LOAD PER STORY:
1-500 OCCUPANTS = 2 EXITS PER STORY (TABLE 1006.3.1)

SEPARATION BETWEEN TWO EXITS – NOT LESS THAN 1/3 THE LENGTH OF MAX DIAGONAL
(BUILDING IS EQUIPPED WITH NPFA 13 FIRE SPRINKLER):
LOWER LEVEL MAX DIAGONAL = 72'
MAIN LEVEL MAX DIAGONAL = 92'

LOWER LEVEL EXIT SEPARATION REQUIRED: 24'
MAIN LEVEL EXIT SEPARATION REQUIRED: 30'-9"

EXIT SEPARATION PROVIDED:
• LOWER LEVEL = 57'
• MAIN LEVEL = 47'

EGRESS WIDTH (PER 1005.3.1 AND 1005.3.2):

CORRIDORS – PER TABLE 1020.2 CORRIDORS SHALL NOT BE LESS THAN 44"
MIN WIDTH OF CORRIDORS PROVIDED = 60"

STAIRS – PER SECTION 2011.2, STAIRWAYS SHALL NOT BE LESS THAN 44" WIDE
WIDTH OF STAIR PROVIDED = 44"

EGRESS CONTINUITY – MIN WIDTH OR REQUIRED CAPACITY SHALL NOT BE REDUCED
ALONG THE PATH OF EGRESS TRAVEL (PER 1005.4)

MINIMUM DOOR WIDTH: 32" PER 1010.1.1

ACCESSIBLE MEANS OF EGRESS: THE ELEVATOR SERVES AS THE ACCESSIBLE MEANS
OF EGRESS FROM THE MAIN LEVEL (1-STORY ABOVE GRADE) IN ACCORDANCE WITH 2018
IBC 1009.4.

EXIT ACCESS TRAVEL DISTANCE: 250' (WITH SPRINKLER SYSTEM) PER TABLE 1017.2

PLUMBING FIXTURE COUNT PER OCCUPANT LOAD PER 2902.1

ASSEMBLY CONCENTRATED	154
ASSEMBLY, EXHIBIT GALLERY	38
BUSINESS	12
STORAGE, MECHANICAL	3
TOTAL	207

MEN: 104
WOMEN: 104

ASSEMBLY OCCUPANCY: (192 TOTAL GROUP A OCCUPANTS; 96 MALE, 96 FEMALE)
WATER CLOSETS
MALE: 1 PER 125 = 1 REQUIRED, 4 TOILETS PROVIDED
FEMALE: 1 PER 65 = 1 REQUIRED, 4 TOILETS PROVIDED
LAVATORIES:
1 PER 500 = 1 MALE, 1 FEMALE REQUIRED, 4 TOTAL PROVIDED

BUSINESS OCCUPANCY: (12 TOTAL GROUP B OCCUPANTS; 6 MALE, 6 FEMALE)
WATER CLOSETS
MALE: 1 PER 25 = 1 REQUIRED, 4 TOILETS PROVIDED
FEMALE: 1 PER 25 = 1 REQUIRED, 4 TOILETS PROVIDED
LAVATORIES:
1 PER 200 = 1 MALE, 1 FEMALE REQUIRED, 4 TOTAL PROVIDED

DRINKING FOUNTAINS:
1 PER 500 = 1 REQUIRED, 1 DRINKING FOUNTAINS PROVIDED

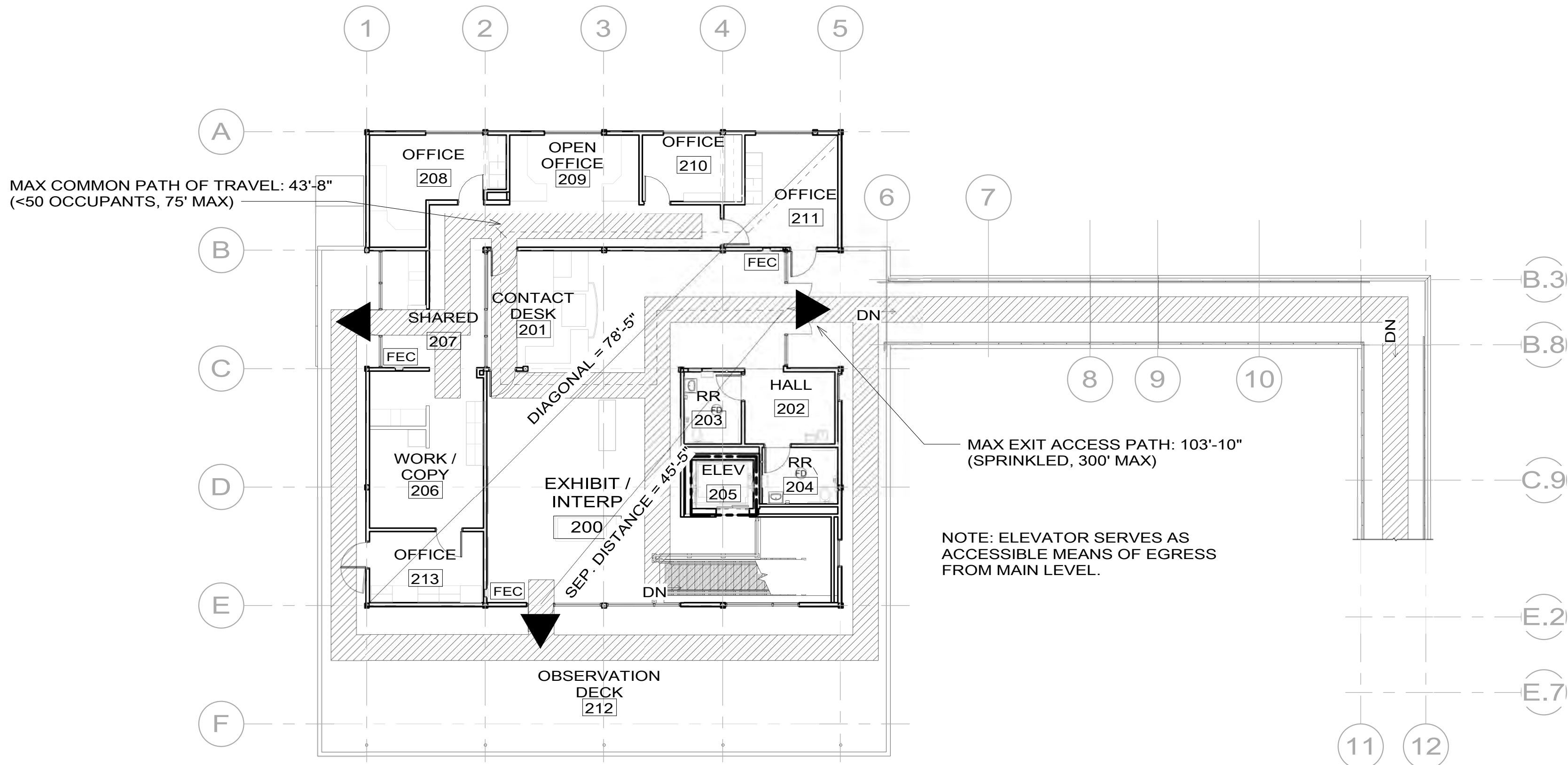
1 SERVICE SINK REQUIRED; 1 SERVICE SINK PROVIDED

2902.3.2 LOCATION OF TOILET FACILITIES SHALL NOT BE LOCATED MORE THAN 1 STORY
ABOVE OR BELOW THE SPACE REQUIRED TO BE PROVIDED WITH TOILET FACILITIES.

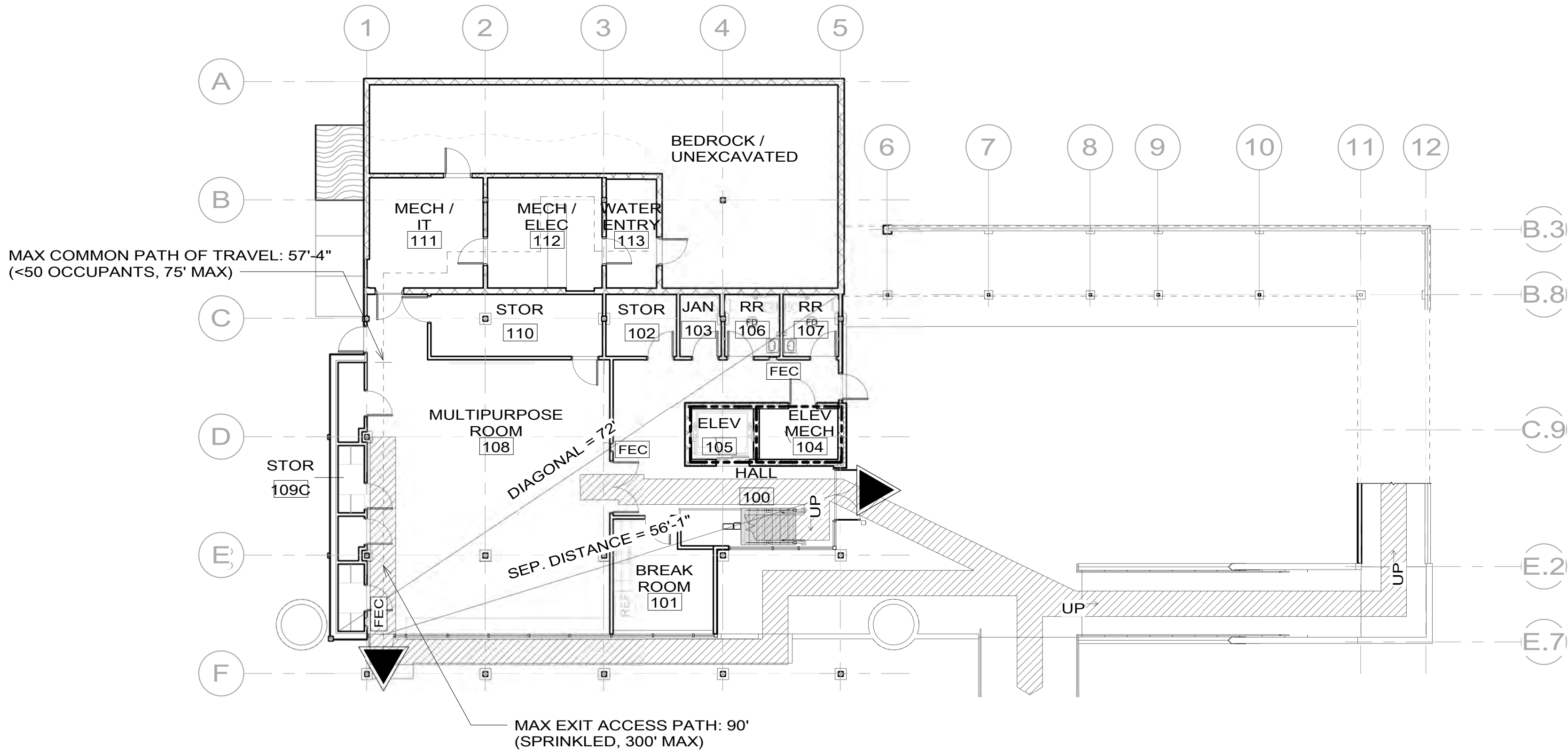


FINAL CD FOR CONSTRUCTION	DESIGNED: BH/BRG	SUB SHEET NO. G0.2	TITLE OF SHEET CODE STUDY	DRAWING NO. 616
	GADD			128446
	DAM/LWB			
	TECH REVIEW: BH/EH			PMIS/PKG NO. 187989
	DATE: 06/01/2020			SHEET 3 OF 145
			ELK CREEK VISITOR CENTER CURECANTI NATIONAL RECREATION AREA	

6/3/2020 10:23:15 AM C:\Users\brandongossard\Documents\CURE - VC Rehabilitation - CD_NEW_brandongossard@andarch.com.rvt



2 MAIN LEVEL EGRESS PLAN
G0.3 SCALE (A)

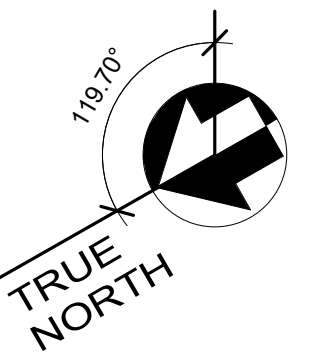


1 GROUND LEVEL EGRESS PLAN
G0.3 SCALE (A)

LEGEND

- ACCESSIBLE EGRESS EXIT
- EXIT DOOR
- EGRESS ROUTE
- FEC <N> SEMI-RECESSED FIRE EXTINGUISHER CABINET (SHALL NOT PROTRUDE MORE THAN 4" FROM WALL).
- 1-HR FIRE RATED CONSTRUCTION

SCALE (A) 4 0 4 8 12
SCALE OF FEET



FINAL CD FOR CONSTRUCTION	DESIGNED: BH/BRG	SUB SHEET NO. G0.3	TITLE OF SHEET EGRESS/CODE PLAN ELK CREEK VISITOR CENTER CURECANTI NATIONAL RECREATION AREA	DRAWING NO. 616
	GADD			128446
	DAM/LWB			PMIS/PKG NO. 187989
	TECH REVIEW: BH/EH			SHEET 4 OF 145
	DATE: 06/01/2020			