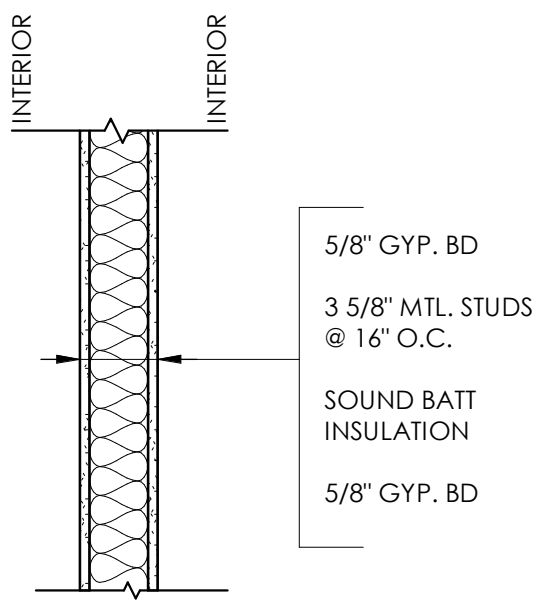
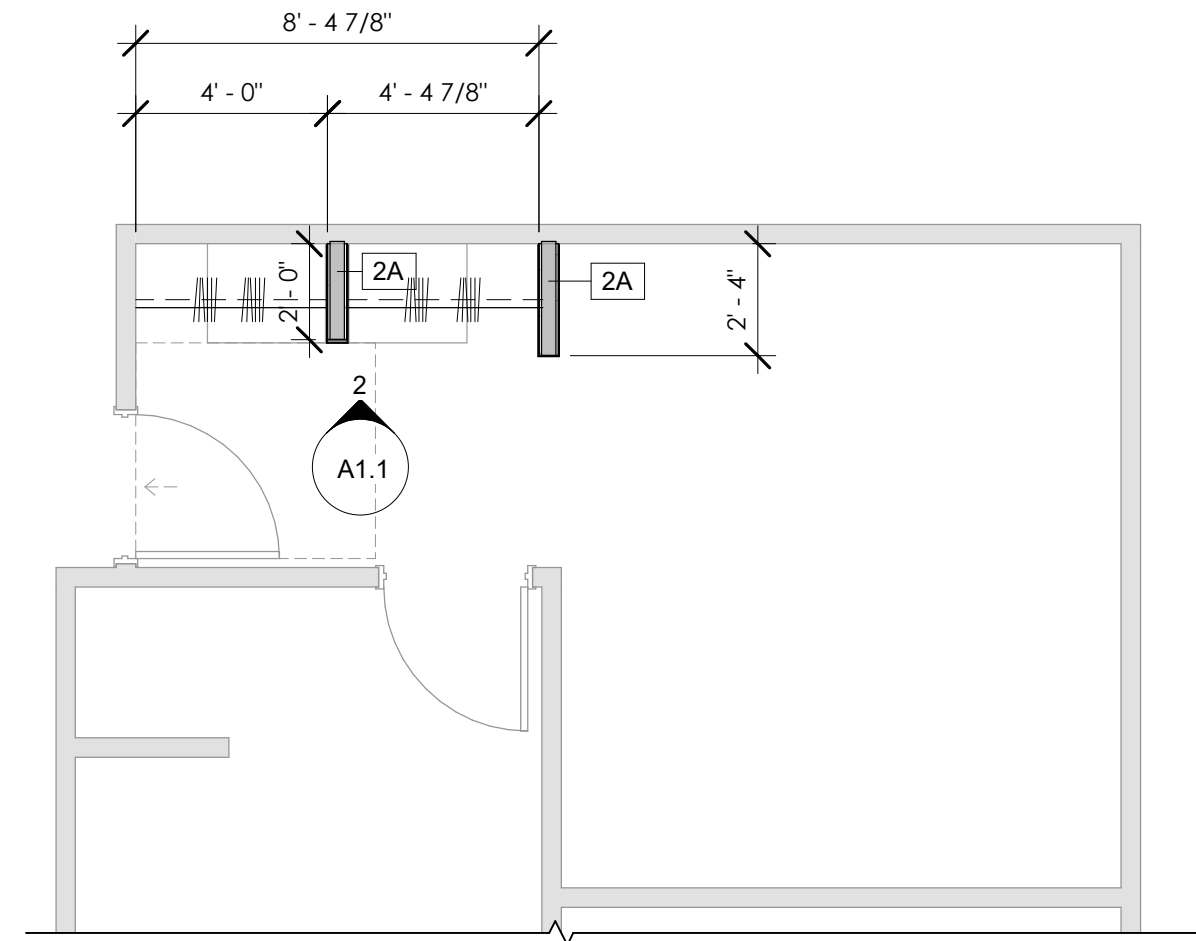


WALL TYPES

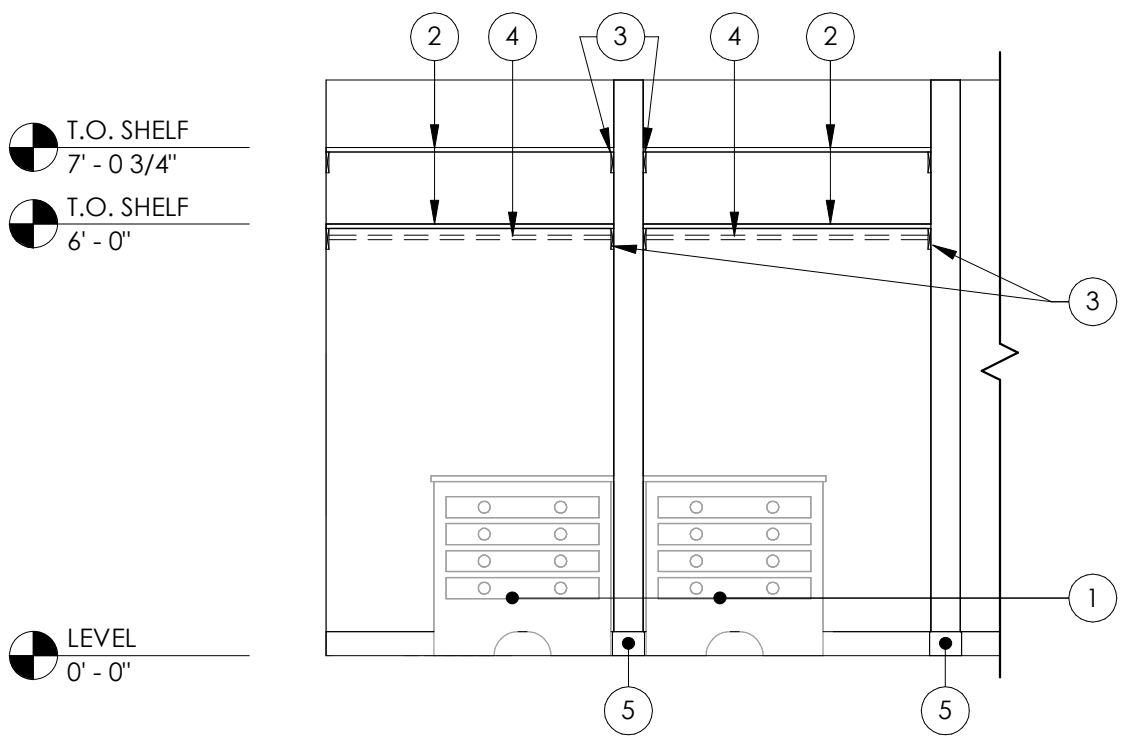


2A



* MIRRORED UNITS THROUGHOUT *

1 TYPICAL CLOSET LAYOUT
A1.1 1/4" = 1'-0"

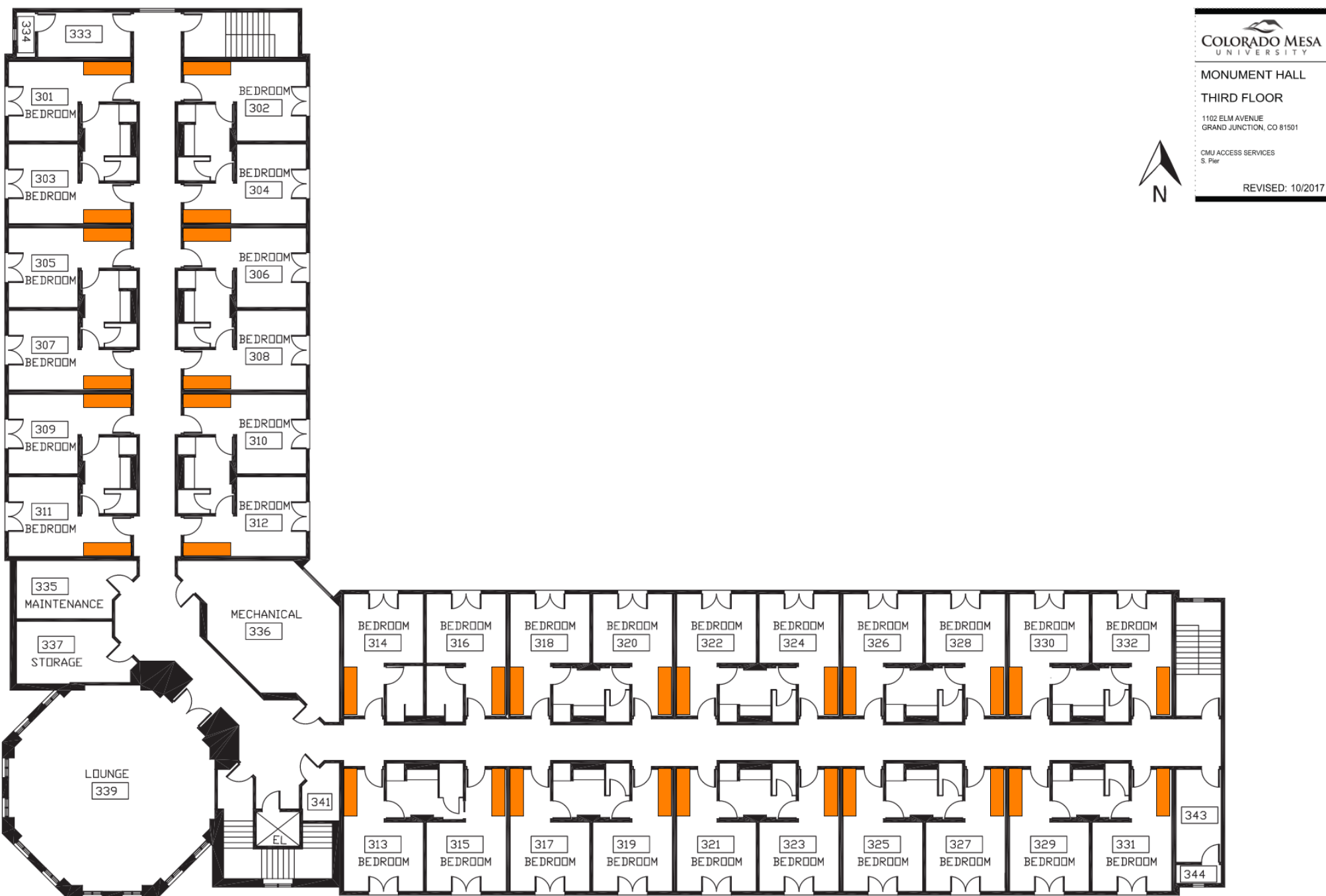
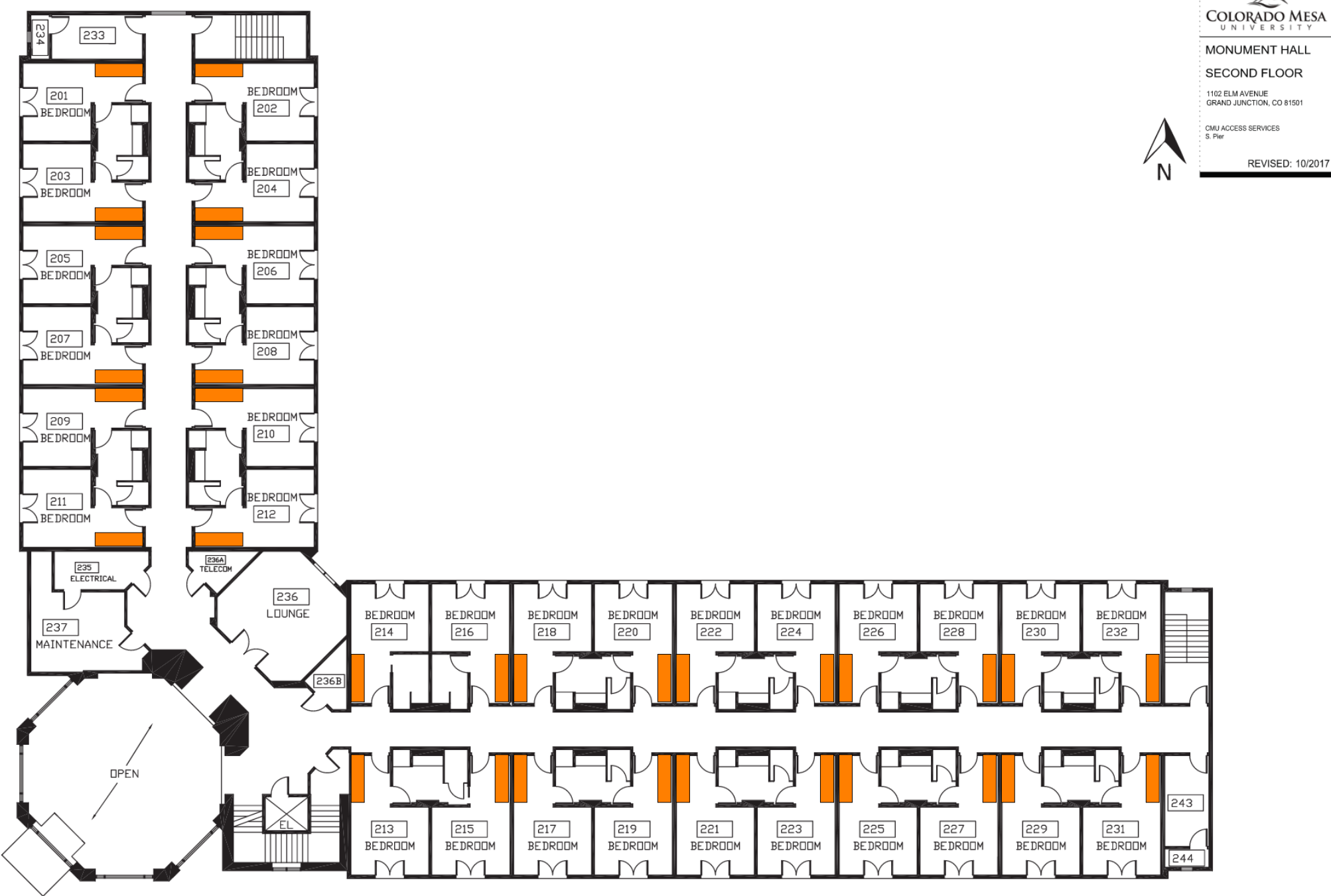


* MIRRORED UNITS THROUGHOUT *

2 I.E. CLOSET - FRONT
A1.1 3/8" = 1'-0"

SWINGING DOOR MANEUVERING CLEARANCES
PER ICC A117.1-2009 (ACCESSIBLE AND USABLE BUILDINGS AND FACILITIES), SECTION 404.2.3.2

| CONFIG | APPROACH | SIDE | DIST 1 | DIST 2 | DIST 3 | HARDWARE |
|--------|--------------|------|----------|----------|----------|--------------------------|
| a1) | FRONT | PULL | 18" MIN. | 60" MIN. | 0" | ANY |
| b1) | FRONT | PUSH | 0" | 48" MIN. | 0" | NONE or CLOSER or LATCH |
| b2) | FRONT | PUSH | 12" MIN. | 48" MIN. | 0" | CLOSER & LATCH |
| c1) | SIDE (HINGE) | PULL | 36" MIN. | 60" MIN. | 0" | ANY |
| d1) | SIDE (HINGE) | PULL | 42" MIN. | 54" MIN. | 0" | ANY |
| e1) | SIDE (HINGE) | PUSH | 0" | 42" MIN. | 22" MIN. | NONE or CLOSER or LATCH |
| e2) | SIDE (HINGE) | PUSH | 12" MIN. | 48" MIN. | 22" MIN. | CLOSER & LATCH |
| f1) | SIDE (LATCH) | PULL | 24" MIN. | 48" MIN. | 0" | NONE or LATCH |
| f2) | SIDE (LATCH) | PULL | 24" MIN. | 54" MIN. | 0" | CLOSER or CLOSER & LATCH |
| g1) | SIDE (LATCH) | PUSH | 24" MIN. | 42" MIN. | 0" | NONE or LATCH |
| g2) | SIDE (LATCH) | PUSH | 24" MIN. | 48" MIN. | 0" | CLOSER or CLOSER & LATCH |



SYMBOL LEGEND - ENLARGED PLAN

A --- - GRID LINE

101A --- - DOOR TAG

AL HM --- - WINDOW TAG

CL --- - CENTERLINE

--- - WALL ABOVE OR HIDDEN LINE

--- - MATCH LINE

--- - KEYNOTE SYMBOL

NEW CLOSET LOCATION

Room name 100

1 A1.1

4 A1.1

2 A1.1

3 A1.1

1 A1.1

1 A1.1

- ROOM TAG

- ELEVATION SYMBOL

- SECTION SYMBOL

- CALLOUT SYMBOL

LVT - LUXURY VINYL TILE

CLG - CEILING

WH - WATER HEATER

FURN - FURNACE

CONC - CONCRETE

MSTR - MASTER

GENERAL FLOOR PLAN NOTES

- REFER TO MEP FOR HVAC, LIGHTING, POWER SIZE AND LOCATIONS
- REFER TO STRUCTURAL DRAWINGS FOR STRUCTURAL BEAMS, WALLS, COLUMNS SIZE AND LOCATIONS
- REFER TO SHEET A0.0 FOR PUBLIC SPACES ADA STANDARDS FOR ACCESSIBLE DESIGN
- DO NOT SCALE DRAWINGS. IF DIMENSIONS ARE IN QUESTION THE CONTRACTOR SHALL BE RESPONSIBLE FOR OBTAINING CLARIFICATION FROM THE ARCHITECT PRIOR TO CONTINUING CONSTRUCTION.
- ITEMS NOT NOTED ON THE DRAWINGS SHALL BE CONSIDERED THE SAME AS NOTED ITEMS WHICH ARE GRAPHICALLY REPRESENTED IN THE SAME MANNER.
- PROVIDE BLOCKING FOR ALL WALL EQUIPMENT, TOILET ACCESSORIES, MILLWORK AND OTHER WALL MOUNTED ITEMS. SEE ELEVATIONS AND EQUIPMENT SPECIFICATIONS FOR ADDITIONAL INFORMATION.
- CONTRACTOR SHALL CAULK AT THE INTERFACE OF INTERIOR FACES OF DOOR FRAMES WITH ADJACENT MATERIALS THOUGH JOINT MAY NOT BE VISIBLE.
- PROVIDE TRANSITION STRIPS BETWEEN FLOOR MATERIALS OF DISSIMILAR HEIGHTS. CENTER TRANSITION STRIPS UNDER DOORS OR OTHER PLACES OUT OF SIGHT.
- PROVIDE POSITIVE SLOPE ON ALL FLOOR DRAINS. MINIMUM OF 1/8" PER FOOT. SLOPE FLOOR ALL AROUND FROM ADJACENT WALLS TO FLOOR DRAINS. DO NOT DEPRESS ONLY THE AREA IMMEDIATELY AROUND THE DRAIN.
- REFER TO THE MECHANICAL ELECTRICAL AND PLUMBING DRAWINGS FOR THE LOCATIONS OF PIPING, VENTS, DUCTS, CURBS, FANS AND OTHER ITEMS WHICH PENETRATE THE ROOF PLANE.
- DOOR JAMB LOCATION OFF FACE OF WALL IS 4" TYPICAL, UNLESS NOTED OTHERWISE.

FLOOR PLAN TAG NOTES

- FURNITURE BY OTHERS
- 1 1/2" X 48" X 3/4" MDF BOARD, PNT. WHITE
- 1X4 BLOCKING, PNT. WHITE
- HEAVY DUTY CLOSET ROD W/ HEAVY-DUTY POLE SOCKETS, PRE-FINISHED WHITE.
- BASE, MATCH EXG.

**KRAAI DESIGN
ARCHITECTURE**

2394 PATTERSON ROAD, SUITE 201
GRAND JUNCTION, CO 81505

126 ELK AVENUE, UNIT 1
CRESTED BUTTE, CO 81224

T: 970.712.5045

MONUMENT HALL CLOSETS

1102 ELM WALK
GRAND JUNCTION, CO

| REVISION(S): | | |
|--------------|------|----------|
| # | DATE | COMMENTS |
| | | |
| | | |
| | | |
| | | |
| | | |
| | | |

REVIEW SET 2

PROJECT NO:
2532

SHEET NAME:
MAIN LEVEL PLAN,
ELEVATIONS,
SCHEDULES

DATE: 04/18/2025

SHEET NO:

A1.1

SCALE: As indicated

NOT FOR CONSTRUCTION