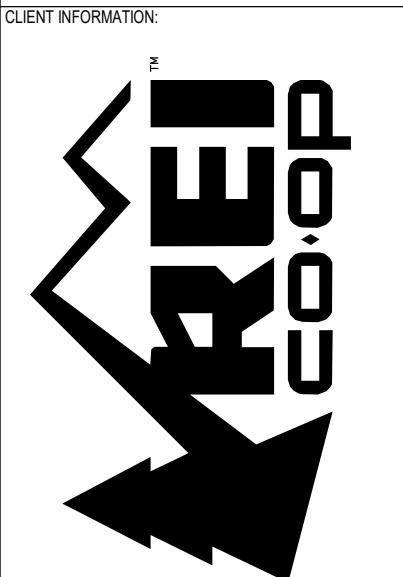


- ALL ANGLED WALLS ARE @ 45°, 90°, OR 135° UON.
- CONTRACTOR TO PROVIDE CLEAT AT ALL WALLS WHERE RACKING OCCURS. SEE 2A.302. MAINTAIN 36" CLEAR ROUTE AT ALL RACKING LOCATIONS.
- AFTER PLUMBING LEAVEOUTS ARE CONFIRMED, INFILL EXISTING SLAB LEAVEOUTS TO MATCH EXISTING ADJACENT.
- SECURE ALL EQUIPMENT TO WALL OR FLOOR WITH APPROPRIATE ANCHORS.
- PROVIDE SOUND INSULATION BLANKETS IN WALLS AS INDICATED BY PARTITION TYPE.
- STORAGE RACKING IN STORAGE AREAS IS TYPICALLY 18"-24" AFF WHICH FALLS BELOW THE HIGH PILE FOR OWNER'S INSURANCE.
- PROVIDE BLOCKING AND RACKING IN PARTITIONS FOR ALL CASEWORK, SHELVING, COUNTERTOPS, TOILET ACCESSORIES, AND OWNER SUPPLIED EQUIPMENT. COORDINATE WITH SHOP DRAWINGS.
- PROVIDE PLUMB STRAIGHT AND FLAT PARTITIONS IN RETAIL (110) FOR INSTALLATION OF FIXTURES. REVIEW EXISTING PARTITIONS - NOTIFY ARCHITECT IF NOT COMPLIANT AND FIX AS REQUIRED.
- ALL LEVEL CHANGES BETWEEN 1/4" AND 1/2" TO HAVE 1:2 BEVEL. LEVEL CHANGES GREATER THAN 1/2" TO HAVE A 1:12 SLOPE.



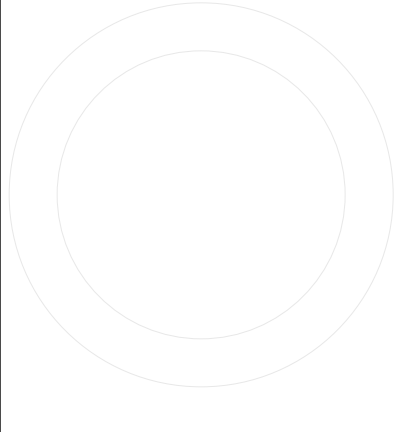
**CALLISONRTKL**  
 CallisonRTKL, Inc.  
 1450 9th Ave  
 Seattle, WA 98101  
 006-132864-81

CONSULTANT INFORMATION

PROJECT INFORMATION

**REI-GLENWOOD SPRINGS**  
 3216 S. GLEN AVENUE  
 GLENWOOD SPRINGS,  
 CO, 81601

SIGNATURE SEAL

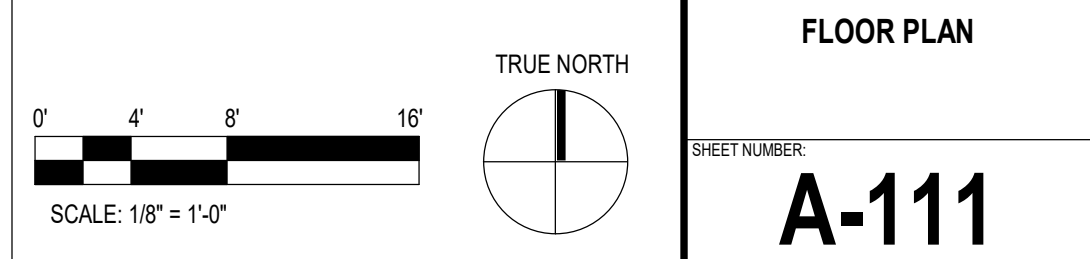


REVISION LOG

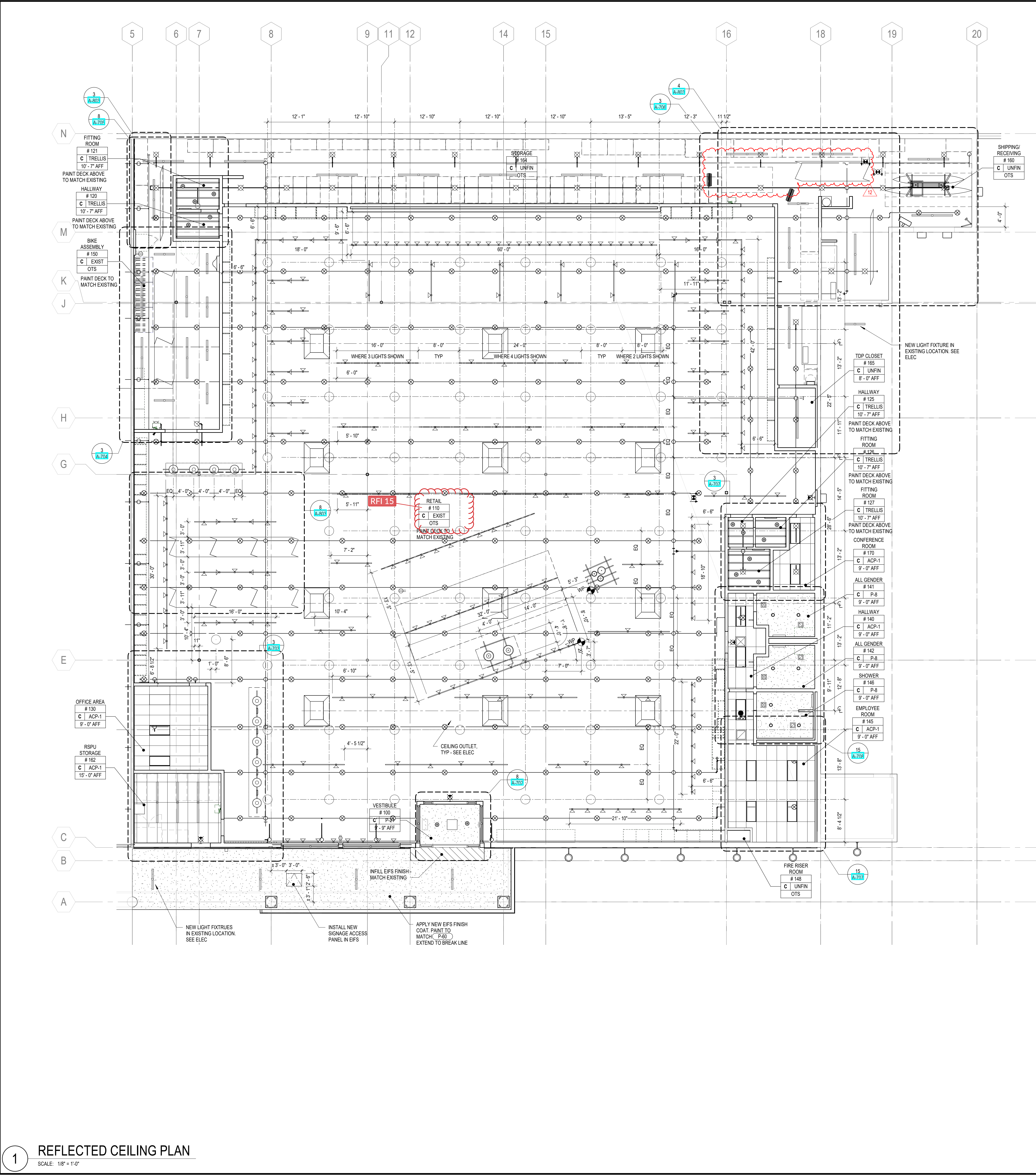
REV	DATE	DESCRIPTION
1	11/05/21	PERMIT SET
2	12/20/21	BULLETN 2
4	01/14/22	CONSTRUCTION SET
4	03/11/22	BULLETN 4
5	03/02/22	BULLETN 5
8	03/23/22	BULLETN 8
9	03/23/22	BULLETN 9
12	05/11/22	BULLETN 12

**SHEET LEGEND**

- NEW CONSTRUCTION
- EXISTING CONSTRUCTION
- FLOOR BOX
- CONDUIT STUBBED THRU SLAB
- FIRE EXTINGUISHER
- FLOOR DRAIN
- METAL CORNER GUARD
- FOIO, UON
- 1HR FIRE RATED
- 2HR FIRE RATED
- SECURITY MESH
- FIELD VERIFY FLOOR FLATNESS AND LEVELNESS FOR ROLLING RACKS. PROVIDE UNIT PRICING FOR CONCRETE LEVELING OVERLAY. FEATHER TO EXISTING AT MAX 1/8" PER FOOT
- CONCRETE SLAB INFILL







- CENTER ALL CEILING GRIDS AND LIGHTS WITHIN ROOMS (TYP.) UN.
- ALL HVAC EQUIPMENT SHOWN FOR COORDINATION PURPOSES ONLY - SEE MEP DRAWINGS FOR EQUIPMENT SPECIFICATIONS.
- REFER TO ELEC DRAWINGS FOR ALL MOUNTING HEIGHTS OF LIGHT FIXTURES.
- SEE A.107 FOR LIGHT FIXTURE SUPPORT DETAILS AT CEILING GRID.
- LOCATE DUCTWORK AS HIGH AS POSSIBLE (SEE MECH). BOTTOM OF DUCTWORK SHOULD ALWAYS BE HIGHER THAN BOTTOM OF LIGHTS. VERIFY WITH ELEC. NOTIFY ARCHITECT IF OBSTRUCTIONS OCCUR.
- IN ROOMS WITH ACP CEILING, PROVIDE CAULK BETWEEN PERIMETER CEILING GRID AND WALL.
- ONLY USE UNFINISHED GALVANIZED HVAC DUCT WORK. ONLY USE FACTORY FINISHED FIRE SUPPRESSION EQUIPMENT INSIDE THE SPACE.
- ONLY USE PRE-GALVANIZED UNISTRUT FINISH (PG) FOR HANGING TRACK, TYP.
- LOCATE AND CONFIRM DIMENSIONS AT BKE AND BOAT LIFTS WITH REI PRIOR TO SHIPMENT OF ITEMS.

**CLIENT INFORMATION**

**#235**

**REI co.op**

**PROJECT INFORMATION**

**CALLISONRTKL**

CallisonRTKL Inc.  
1400 Pike Ave  
Seattle, WA 98101  
006-132864-81

**CONSULTANT INFORMATION**

**PROJECT INFORMATION**

**SHEET LEGEND**

- DISPLAY FIXTURES BELOW (FOO)
- LIGHTING TRACK
- TRAFFIC AISLE BELOW
- ⊗ SUPPLY
- ⊠ RETURN
- ⊞ HVAC DROP
- NEW DUCTWORK SHOWN POCHED FOR CLARITY
- ⊕ ⊗ EXIT SIGNAGE
- ⊞ ACP CEILING
- PAINTED GYP CEILING

**LIGHT FIXTURES**

- ⊞ SURFACE MOUNTED, SEE ELEC
- ⊞ TRACK MOUNTED, SEE ELEC
- ⊞ SUSPENDED, SEE ELEC
- ⊞ WALL MOUNTED, SEE ELEC

**SHIPPING INQUIRY LOG**

REV	DATE	DESCRIPTION
1	11/05/21	PERMIT SET
2	12/20/21	BULLETN 2
3	01/14/22	BULLETN 3
4	01/14/22	CONSTRUCTION SET
7	03/18/22	BULLETN 7
8	03/23/22	BULLETN 8
10	04/22/22	BULLETN 10
12	05/11/22	BULLETN 12

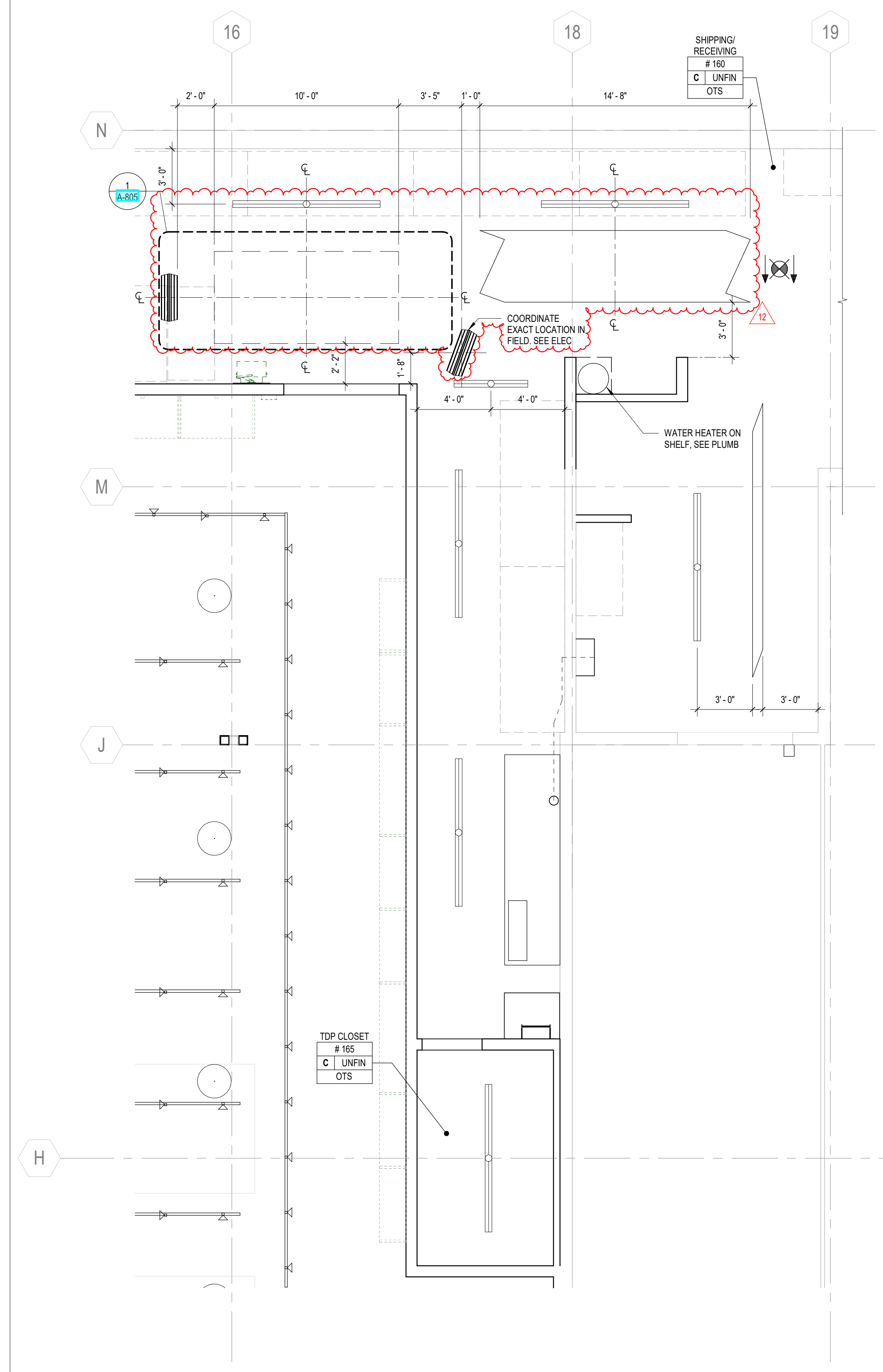
**SCALE: 1/8" = 1'-0"**

**TRUE NORTH**

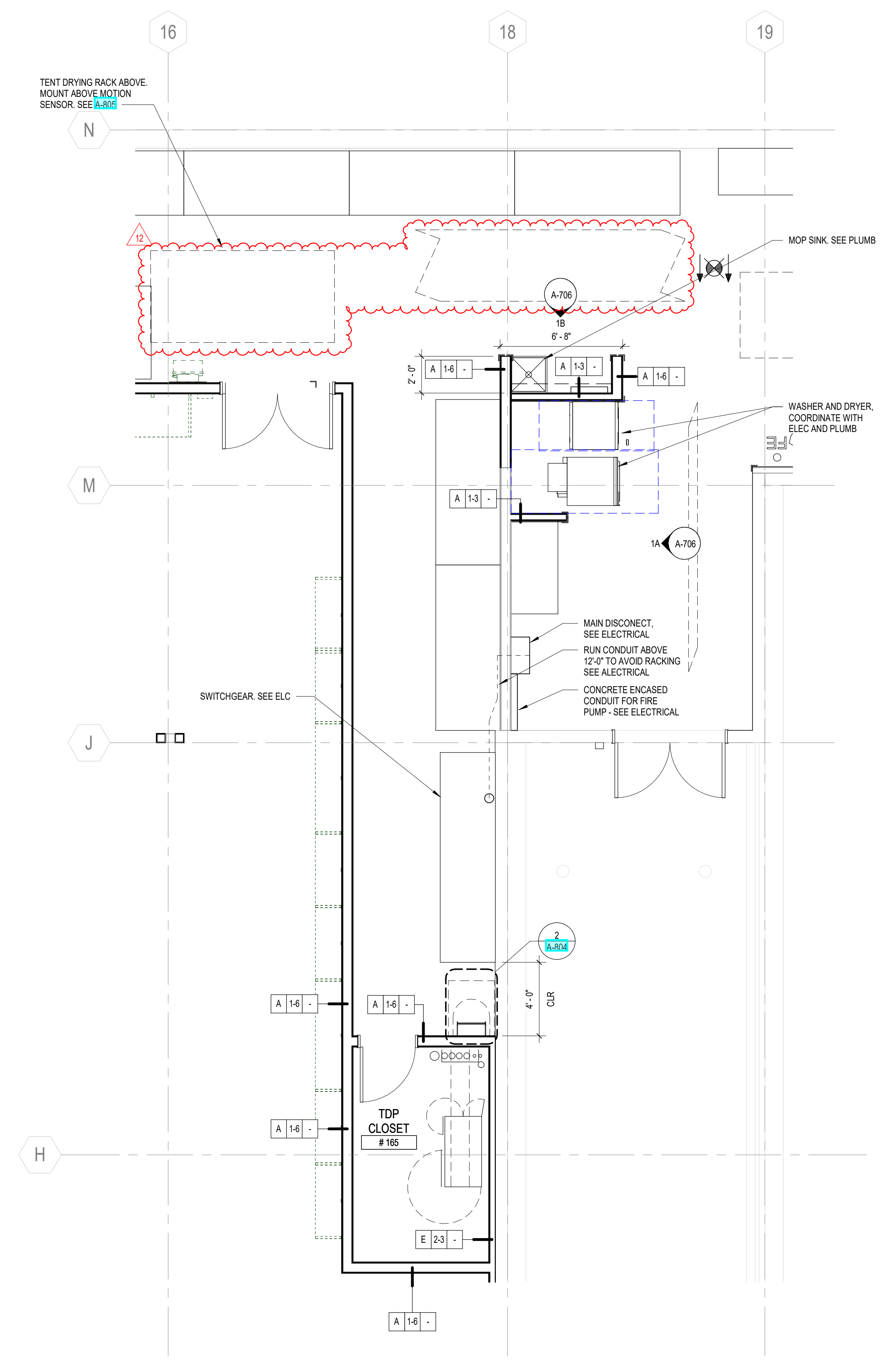
**REFLECTED CEILING PLAN**

**A-141**

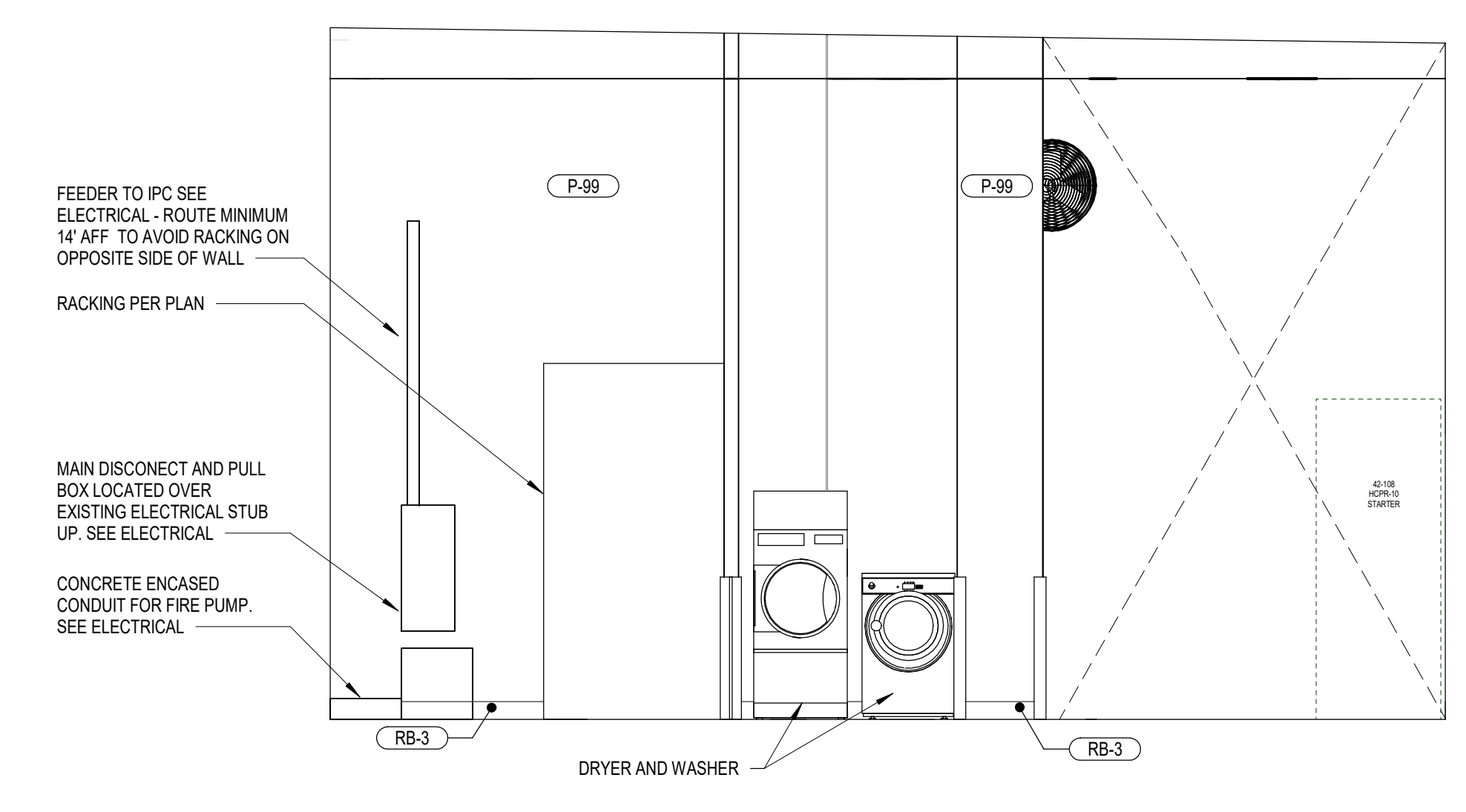
REV	DATE	DESCRIPTION
1	11/05/21	PERMIT SET
1	12/02/21	BULLETN 1
4	01/14/22	CONSTRUCTION SET
9	03/11/22	BULLETN 4
9	03/23/22	BULLETN 9
12	05/11/22	BULLETN 12



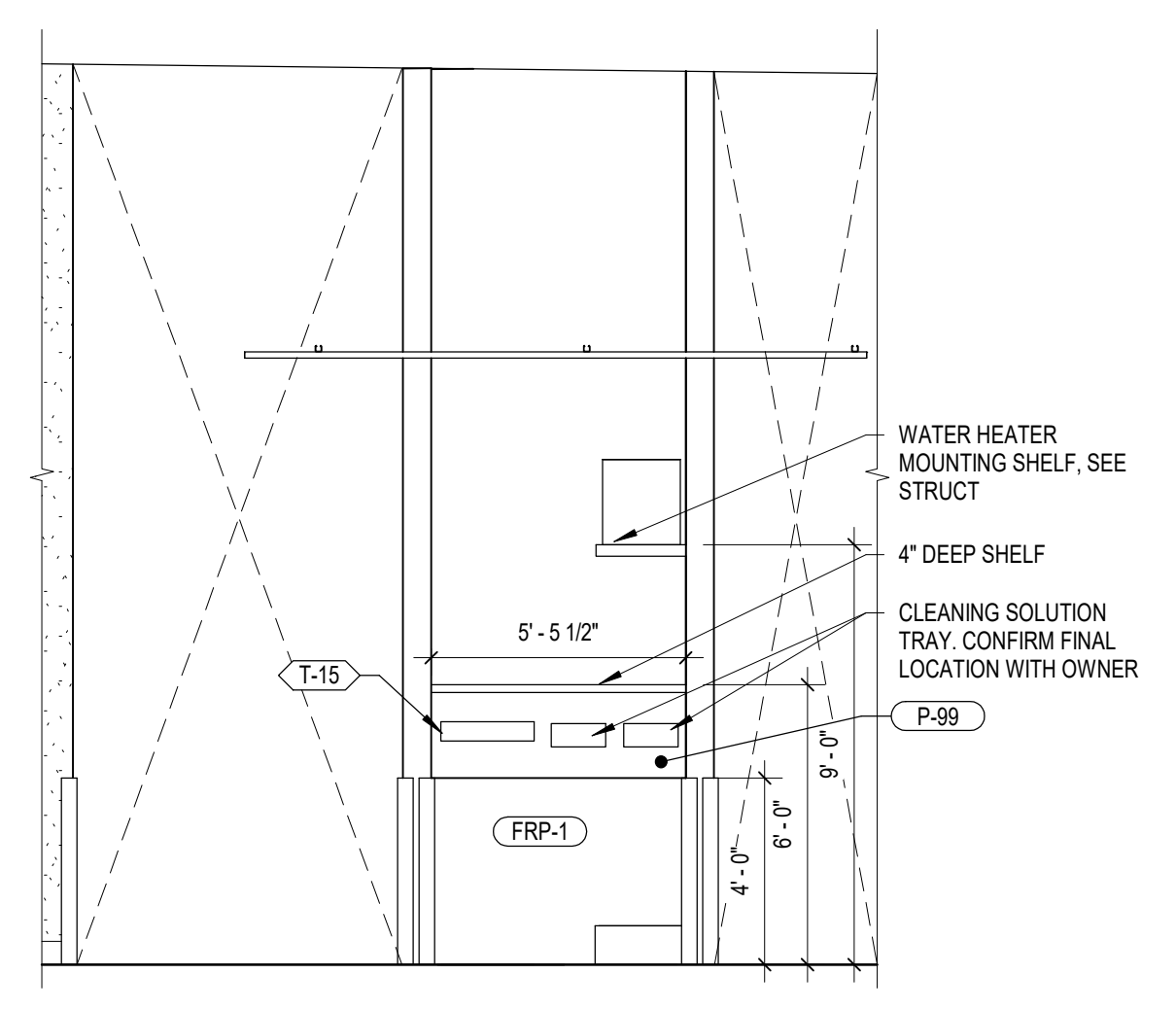
3 ENLARGED PARTIAL BOH RCP  
SCALE: 1/4" = 1'-0"



2 ENLARGED PARTIAL BOH PLAN PLAN  
SCALE: 1/4" = 1'-0"



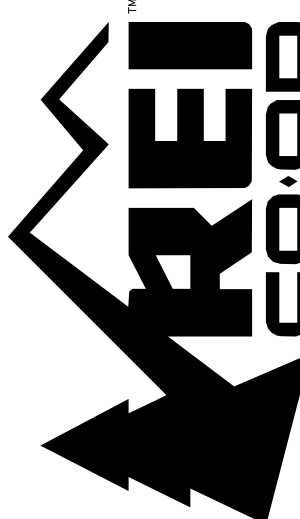
1A - WASHER/DRYER ELEVATION



1B - MOP SINK ELEVATION

1 JANITOR AREA - ELEVATIONS  
SCALE: 1/4" = 1'-0"





CALLISONRTKL  
Legal Entity  
Building Name  
City, State, Zip  
XXX-XXXX-XX



REI-GLENWOOD SPRINGS  
3300 SOUTH GLEN AVENUE  
GLENWOOD SPRINGS,  
CO. 81601

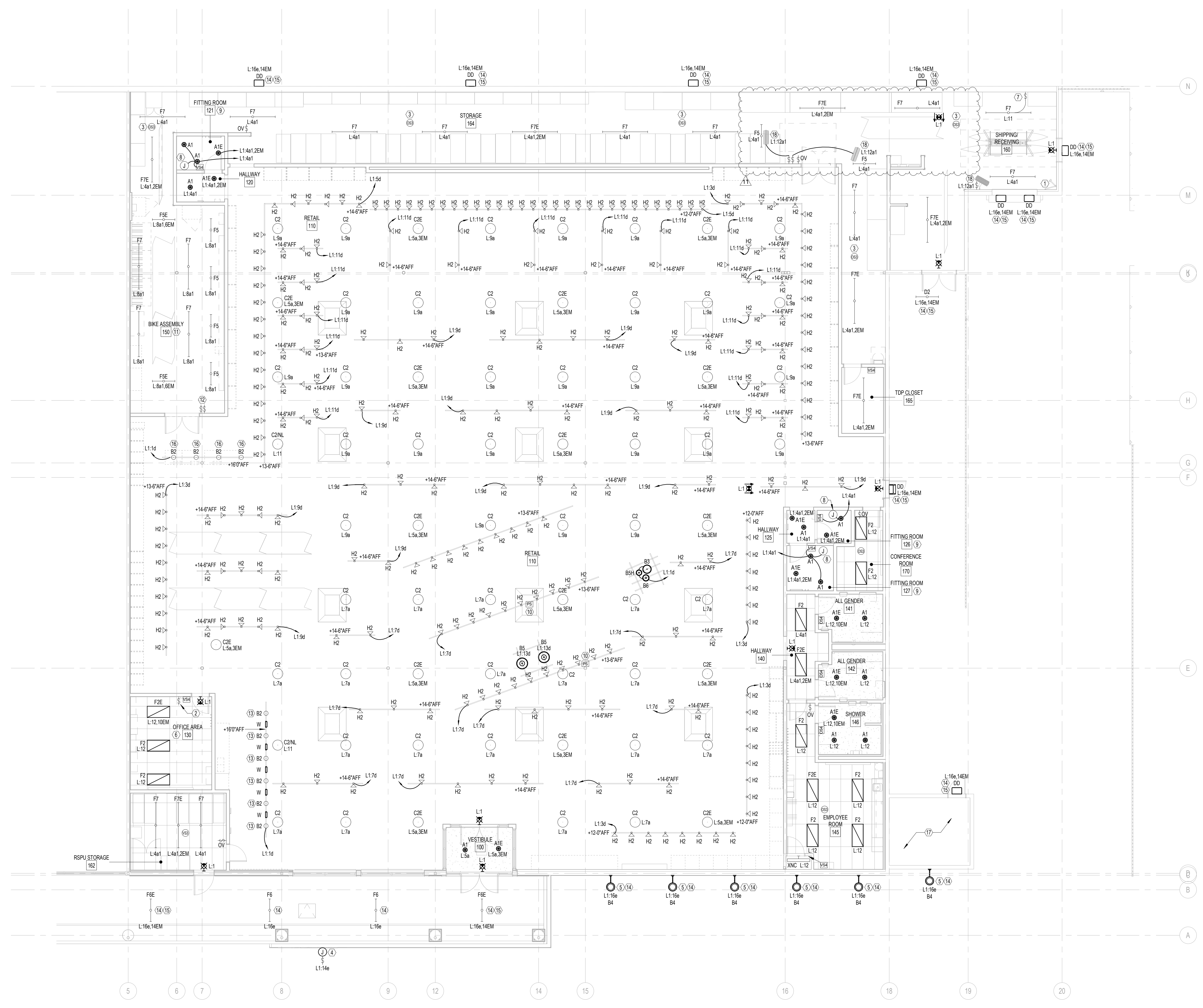
**LIGHTING GENERAL NOTES**

- ALL LIGHTING IS NEW UNLESS OTHERWISE NOTED.
- ALL LIGHTING IN SALES AREA TO BE CONTROLLED BY NOVAR CONTROL SYSTEM UNLESS SHOWN OTHERWISE.
- ALL TRACK SHALL BE MOUNTED TO FULL LENGTH STEEL CHANNEL FOR SUPPORT. ALL TRACK SHALL BE LOCATED 6'-0" FROM THE WALL UNLESS NOTED OTHERWISE. VERIFY EXACT LOCATIONS WITH ARCHITECT. REFER TO PLAN FOR MOUNTING HEIGHTS. VERIFY EXACT MOUNTING HEIGHT WITH ARCHITECT. CONTRACTOR SHALL PAINT STRUT TO MATCH TRACK.
- EXIT LIGHTS SHALL BE MOUNTED 8'-0" ABOVE FINISHED FLOOR (BOTTOM OF FIXTURE) OR JUST ABOVE THE TOP OF THE DOOR IF WALL MOUNTED ABOVE TOP OF A DOOR THAT IS TALLER THAN 8'-0". COORDINATE WITH ARCHITECT ON ALL MOUNTING HEIGHTS.
- ALL WALL PENETRATIONS SHALL BE NEATLY CORE-DRILLED, CAULKED, AND SEALED TO MAINTAIN FIRE AND WATERPROOF RATING. PATCH, REPAIR, AND PAINT TO MATCH EXISTING.
- TESTING OF EMERGENCY LIGHTING IS REQUIRED. CALL FOR TESTING PRIOR TO FINAL INSPECTION (TESTING MUST BE BY DISCONNECTING MAIN).
- BRANCH CIRCUIT CONDUCTORS TO BE TYPE THHN WHERE THERE ARE 6 OR MORE CONDUCTORS IN A CONDUIT.
- ALL 'C2' & 'C2E' LED LIGHT FIXTURES HAVE DIMMABLE DRIVERS & DAYLIGHT CONTROLS.  
IN DAYLIGHT ZONES:  
a = CIRCUITS FOR CONTROL OF TYPES 'C2' & 'C2E' LIGHTING - FOR EMPLOYEE LIGHTS, CUSTOMER LIGHTS, AND DAYLIGHT CONTROLS
- FIXTURES 'FSE', 'F7E', AND 'A1E' ARE FURNISHED WITH A SWITCHABLE EMERGENCY BATTERY BALLAST. CONTRACTOR SHALL PROVIDE HOT WIRE FROM AHEAD OF LOCAL CONTROL. TO ALLOW FIXTURE TO BE POWERED AT ALL TIMES.
- FIXTURES WITH 'NL' DESIGNATION SHALL OPERATE AS NIGHT LIGHT. CONTRACTOR SHALL PROVIDE HOT WIRE FROM AHEAD OF LOCAL CONTROL. TO ALLOW FIXTURE TO BE POWERED AT ALL TIMES.
- SEE DETAIL 3-6102 FOR TRACK LIGHTING DETAIL.
- PROVIDE 9155 PAIR SPECIAL AUDIO, COMMUNICATION, AND INSTRUMENTATION CABLE TO ALL C2 FIXTURES FOR LIGHTING CONTROLS AT TIME OF FIXTURE INSTALLATION.

**LIGHTING KEY NOTES**

- DOCK LIGHT SUPPLIED WITH CORD AND PLUG AND SWITCH. SEE SHEET 3-6100 FOR RECEPTACLE LOCATION.
- NOVAR CONTROLS OVERRIDE KEYPAD.
- MOUNT OCCUPANCY SENSOR ON UNISTRUT. SUCH THAT BOTTOM OF SENSOR IS LEVEL WITH BOTTOM OF LIGHT FIXTURE. ENSURE SENSORS IN SHIPPING/RECEIVING ARE MOUNTED BELOW AND CLEAR OF BIKE AND BOAT LIFTS.
- PROVIDE JUNCTION BOX WITH TOGGLE DISCONNECT SWITCH FOR EACH POWER REQUIRED FOR SIGNAGE ELECTRICAL. COORDINATE EXACT CONNECTION REQUIREMENTS WITH MANUFACTURER. REFER TO ARCHITECTURAL DRAWINGS FOR ELEVATIONS. COORDINATE WITH BUILDING MANAGEMENT ON SIGNAGE OPERATING SCHEDULES. CONTRACTOR SHALL PROVIDE JUNCTION BOX AND 1" EMPTY CONDUIT STUBBED INTO SPACE. COORDINATE WORK WITH SIGNAGE VENDOR PRIOR TO BID. SEE DETAIL 3-6102 FOR MORE INFORMATION.
- REMOTE BALLAST TO BE MOUNTED WITHIN 15'-0" OF FIXTURE (IF REQUIRED).
- IF DAYLITE IS PRESENT, PROGRAM THE BUILT-IN DAYLIGHT SENSOR FOR PHOTO CONTROL.
- LIGHT FIXTURE IN FRONT OF DESK TO BE SWITCHED SEPARATELY FROM REMAINDER OF WAREHOUSE.
- CONTRACTOR TO PROVIDE ROUGH-IN AND MAKE FINAL CONNECTION TO LED DIMMER ASSEMBLY (PROVIDED BY GC). COORDINATE EXACT CONNECTION REQUIREMENTS WITH MANUFACTURER.
- AT FIXTURES USED IN FITTING ROOM AREA WITH OPEN STRUCTURE SHALL ALIGN WITH BOTTOM OF JOISTS. HOUSING AND SUPPORT OF FIXTURES WILL BE COMPLETELY EXPOSED. COORDINATE MOUNTING OF FIXTURE WITH ARCHITECTURAL PLANS.
- MOUNT ONE PHOTOCELL 18" BENEATH SKYLIGHT ON SOUTH OR WEST SIDE OF SKYLIGHT. MOUNT BRACKET TO ROOF JOIST AND SECURE PHOTOCELL TO IT WITH THE LENS OF SENSOR FACING NORTH. MOUNT SECOND PHOTOCELL TO NORTH SIDE OF COLUMN AT 6'-0" AFF TO BOTTOM OF DEVICE, BETWEEN LIGHT FIXTURES AND SKYLIGHT.
- LIGHT FIXTURES IN BIKE ASSEMBLY ROOM TO BE MOUNTED 16'-0" A.F.F.
- LIGHT FIXTURES IN THIS AREA SHALL HAVE LOCAL CONTROL TO PROVIDE DIMMING AND BE ROUTED THROUGH THE TIME CLOCK.
- CONTRACTOR TO PROVIDE JUNCTION BOX MOUNTED TO UNISTRUT FOR EACH 'B2' FIXTURE. 'W' FIXTURES AT CASHWRAP SHALL NOT BE PERMITTED TO BE MOUNTED TO SAME UNISTRUT AS 'B2' FIXTURES. SEE ARCHITECTURAL ELEVATIONS FOR MORE INFORMATION.
- PROVIDE EXTERIOR LIGHTING AND STUB CONDUIT AND WIRING TO JUNCTION BOX ON INTERIOR OF REI SPACE. PROVIDE HOMERUN AND MAKE FINAL CONNECTION TO PANEL.
- PROVIDE EMERGENCY BATTERY PACK WITH WIRING AND CONDUIT TO JUNCTION BOX LOCATED ON BUILDING INTERIOR. PRIOR TO FINAL CONNECTION TO JUNCTION BOX.
- CONTRACTOR TO PROVIDE JUNCTION BOX MOUNTED TO UNISTRUT FOR EACH 'B2' FIXTURE. SEE ARCHITECTURAL ELEVATIONS FOR MORE INFORMATION.
- LIGHTING AND CONTROLS IN THIS SPACE ARE EXISTING TO REMAIN. RE-CIRCUIT TO SPARE BREAKER ON NEW PANEL.
- COORDINATE CONNECTION REQUIREMENTS WITH MANUFACTURER. COORDINATE FAN CONTROL REQUIREMENTS AND LOCATION WITH ARCHITECT AND MANUFACTURER.

**SEE ARCHITECTURAL DRAWINGS FOR DIMENSIONED LOCATIONS OF LIGHTING DEVICES & FIXTURES.**



**1 FLOOR PLAN - LIGHTING**  
SCALE: 1/8" = 1'-0"  
ELECTRICAL

ROOM	CONTROL TYPE	OCCUPANCY SENSOR DESCRIPTION	OS TIME SETTING	NOTES
SALES	NOVAR	NA	NA	-
BIKE ASSEMBLY	NOVAR	NA	NA	-
COMMUNITY ROOM	NOVAR	NA	NA	-
FITTING ROOM AREA	OCCUPANCY SENSOR	DUAL TECHNOLOGY, LINE VOLTAGE CEILING MTD.; WATTSTOPPER-HOT-365.	15 MIN	-
LOCKER ROOM	OCCUPANCY SENSOR	DUAL TECHNOLOGY, LINE VOLTAGE CEILING MTD.; WATTSTOPPER-HOT-365.	15 MIN	-
SHIPPING & RECEIVING	OCCUPANCY SENSOR	PASSIVE INFRARED HIGH-BAY; WATTSTOPPER-#B-300 WITH HBL3 LENS.	15 MIN	1
STORAGE ROOMS	OCCUPANCY SENSOR	PASSIVE INFRARED HIGH-BAY; WATTSTOPPER-#B-300 WITH HBL3 LENS. MANUAL-ON/AUTO-OFF.	15 MIN	1
SMALL OFFICES & BREAK ROOM	OCCUPANCY SENSOR	WALL MOUNTED, -3'-10" OR AS NOTED; WATTSTOPPER-HOT-100. MANUAL-ON/AUTO-OFF.	15 MIN	-
CONFERENCE ROOM	OCCUPANCY SENSOR	WALL MOUNTED, -3'-10" OR AS NOTED; WATTSTOPPER-HOT-100. MANUAL-ON/AUTO-OFF.	15 MIN	-
RESTROOMS	OCCUPANCY SENSOR	ULTRASOUND CEILING MOUNTED; WATTSTOPPER-#UT-365.1.	15 MIN	-

NOTE  
1. SENSITIVITY ADJUSTMENT TO BE SET TO HIGH AT EMPLOYEE ENTRANCES TO STOCK AND RECEIVING AREAS.

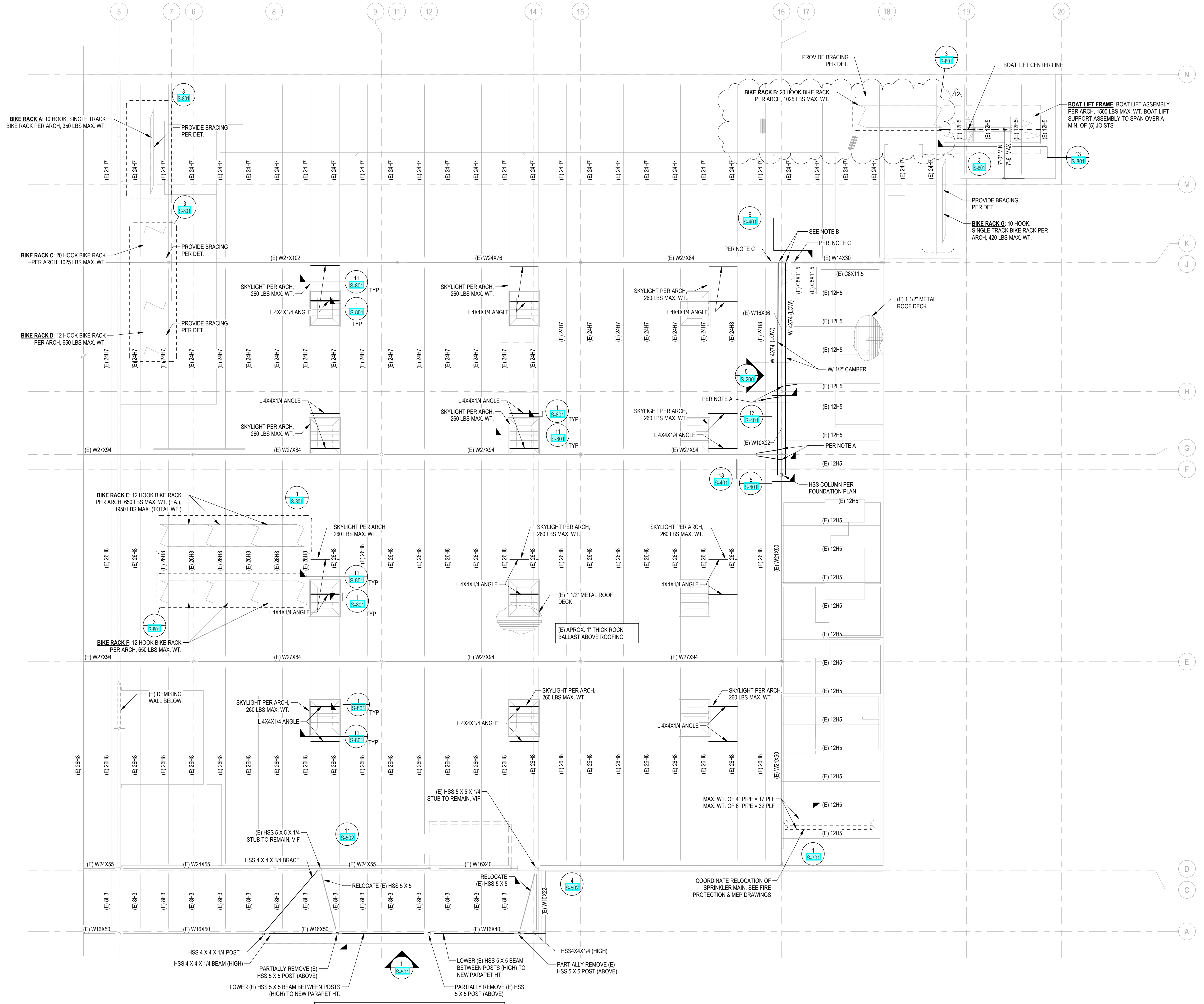
REV	DATE	DESCRIPTION
1	11/08/2021	BID SET
2	12/20/2021	BULLETIN 2
3	1/14/2022	BULLETIN 3
4	2/16/2022	BULLETIN 4
5	3/23/2022	BULLETIN 5
6	05/11/2022	BULLETIN 6

1ST FLOOR PLAN - LIGHTING

E-200



REV	DATE	DESCRIPTION
1	11/05/21	PERMIT SET
2	12/20/21	BULLETIN #2
3	01/14/22	CONSTRUCTION SET
4	02/16/22	BULLETIN #4
12	05/11/22	BULLETIN #12



**LEVEL 2 - STRUCTURAL PLAN (ROOF)**  
 SCALE: 1/8" = 1'-0"

NOTE:  
 - REMOVE EXISTING SIGNAGE.  
 - ALL STEEL EXPOSED TO WEATHER SHALL BE HOT DIPPED GALVANIZED.

**FRAMING NOTES:**  
 A. PROVIDE L 4X4X1/4 ANGLE BRACE AT TOP FLANGE OF W-BEAMS AS SHOWN, CONN. PER DET. 13S-401, TYP.  
 B. HSS COL. BELOW NOT SHOWN FOR CLARITY  
 C. PROVIDE BRACE PER DET. 6S-401

**NOTE:**  
 SPECIAL INSPECTION APPLIES TO THIS PROJECT PER THE GENERAL NOTES. IF THE SPECIAL INSPECTIONS LISTED ARE NOT PROVIDED, TESTING OR REWORK WILL BE REQUIRED FOR FINAL SIGN OFF.

**NOTE:**  
 ALL DIMENSIONS SHOWN ON THESE STRUCTURAL PLANS ARE FOR GENERAL REFERENCE ONLY. THE CONTRACTOR IS RESPONSIBLE FOR VERIFYING ALL DIMENSIONS AND ANY DISCREPANCIES MUST BE BROUGHT TO THE ATTENTION OF THE ARCHITECT AND ENGINEER IMMEDIATELY.

**NOTE:**  
 THESE DRAWINGS ARE BASED ON A LIMITED AMOUNT OF INFORMATION FOR AN EXISTING BUILDING. CONTRACTOR MUST FIELD VERIFY CONDITIONS AND NOTIFY ARCHITECT AND ENGINEER IF CONDITIONS ARE OTHER THAN AS SHOWN PRIOR TO MODIFICATION.