

**United States Department of Agriculture
Forest Service**

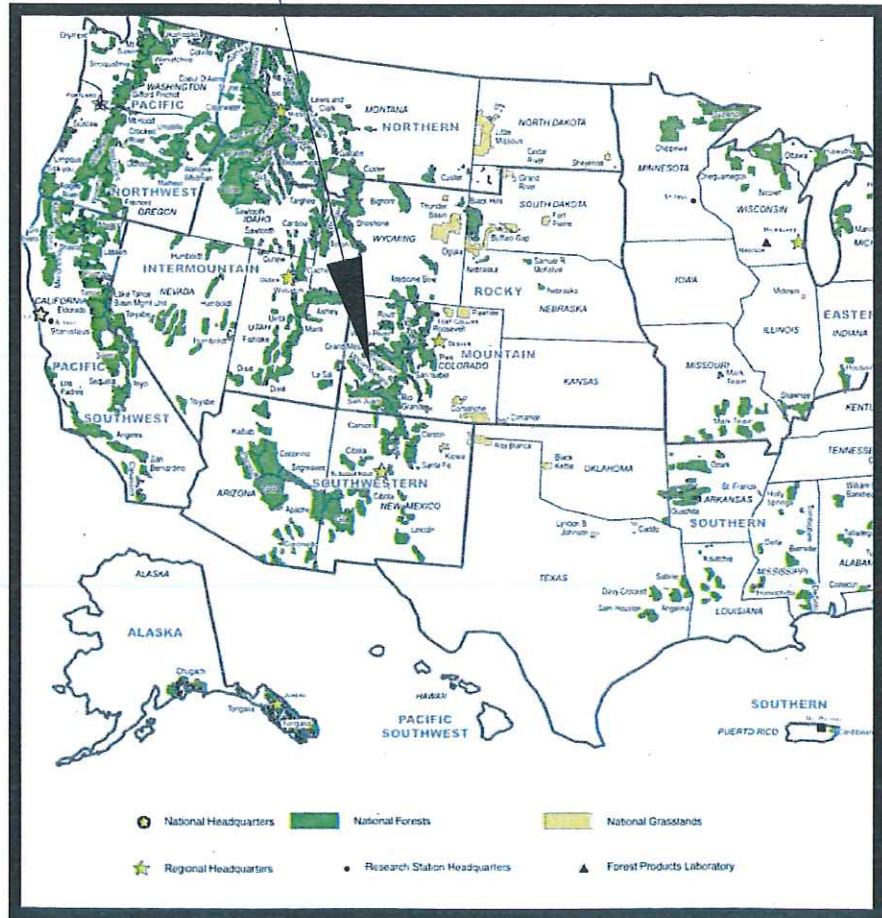
**(R02) ROCKY MOUNTAIN REGION
GRAND MESA, UNCOMPAHGRE AND GUNNISON NATIONAL FORESTS**

**DELTA
COLORADO**

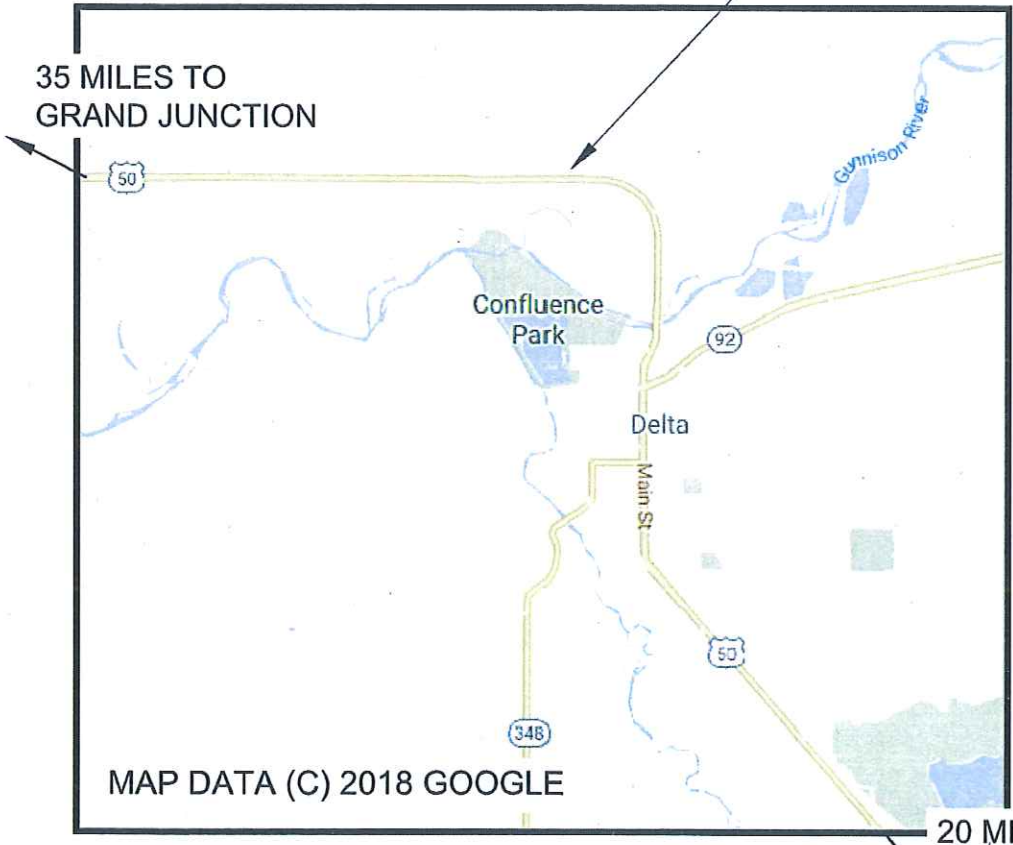
NORTH DELTA STORAGE BUILDING

PROJECT LOCATION

PROJECT LOCATION



NATIONAL MAP



MAP DATA (C) 2018 GOOGLE

VICINITY MAP

INDEX OF SHEETS	
SHEET	SHEET TITLE
G-01	COVER SHEET
C-01	EXISTING SITE PLAN
C-02	PROPOSED BUILDING LOCATION
C-03	PROPOSED UTILITIES PLAN
C-04	DEMOLITION PLAN
C-05	HYDRANT AND BOLLARD DETAILS
C-06	UTILITIES DETAILS
A-01 A-02	FLOOR PLAN & ELEVATIONS
A-03 - A-05	BUILDING SECTIONS & SCHEDULES
S-01 S-02	STRUCTURAL DETAILS
S-03 - S-05	FOUNDATION DETAILS
MEP-01 - MEP-03	MECHANICAL AND PLUMBING
MEP-04 - MEP-06	ELECTRICAL

REVIEWED BY:

Darin M. Mator
PROJECT MANAGER

06/24/19
DATE

[Signature]
FOREST ENGINEER

6/21/19
DATE

RECOMMENDED BY:

[Signature]
FOREST SUPERVISOR

25 June 2019
DATE

APPROVED BY:

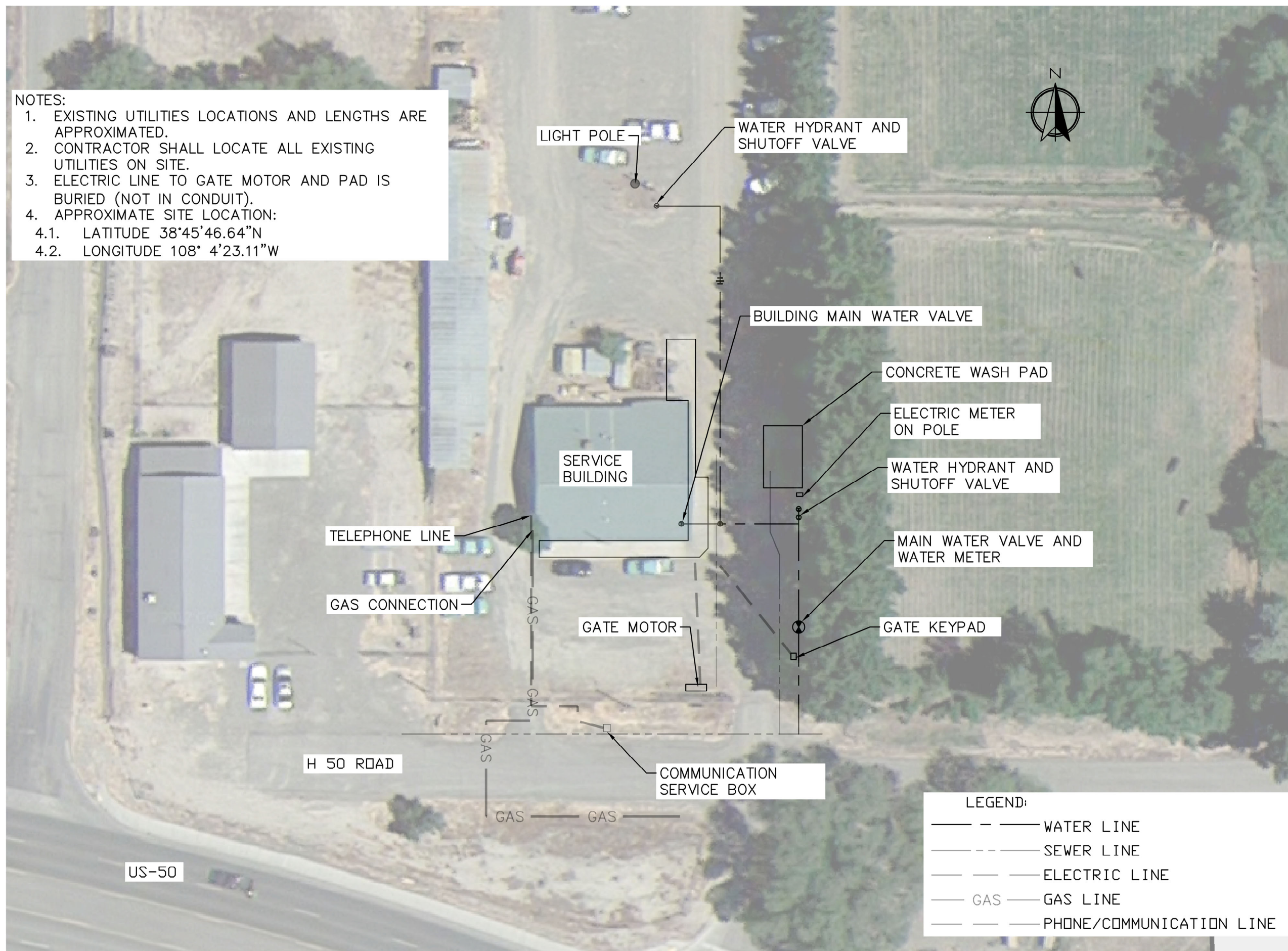
Mary C. Delgado
REGIONAL DIRECTOR OF
ENGINEERING

6/27/19
DATE

2019-6-24 09:56 DIMATOS C:\USERS\DIMATOS\G\M\G\N\DELTA\NEW BUILDING\DWG01 TITLE.DWG;

2019-6-17 16:20 DMATOS C:\USERS\DMATOS\GUGIN DELTA\NEW BUILDING\DWG\02_03_04_CIVIL SITE PLAN.DWG;

- NOTES:
- EXISTING UTILITIES LOCATIONS AND LENGTHS ARE APPROXIMATED.
 - CONTRACTOR SHALL LOCATE ALL EXISTING UTILITIES ON SITE.
 - ELECTRIC LINE TO GATE MOTOR AND PAD IS BURIED (NOT IN CONDUIT).
 - APPROXIMATE SITE LOCATION:
 - LATITUDE 38°45'46.64"N
 - LONGITUDE 108° 4'23.11"W



(R02)
ROCKY MOUNTAIN REGION

PROJECT NAME

**NORTH DELTA
STORAGE BUILDING**

**GRAND MESA,
UNCOMPAGRE AND
GUNNISON NATIONAL
FORESTS**

**SUPERVISOR'S OFFICE
NORTH DELTA SITE**

DRAWING TITLE

EXISTING SITE PLAN

DATE

XXXX-XX-XX

ARCHIVE NO.

XXX

DESIGNER

X.XXX

DRAWN

X.XXX

CHECKED

X.XXX

PROJECT NO.

DWG SHEET NO.

C-01

SHEET 2 OF 23

LEGEND:

— — — — —	WATER LINE
- - - - -	SEWER LINE
— — — — —	ELECTRIC LINE
— GAS —	GAS LINE
— — — — —	PHONE/COMMUNICATION LINE

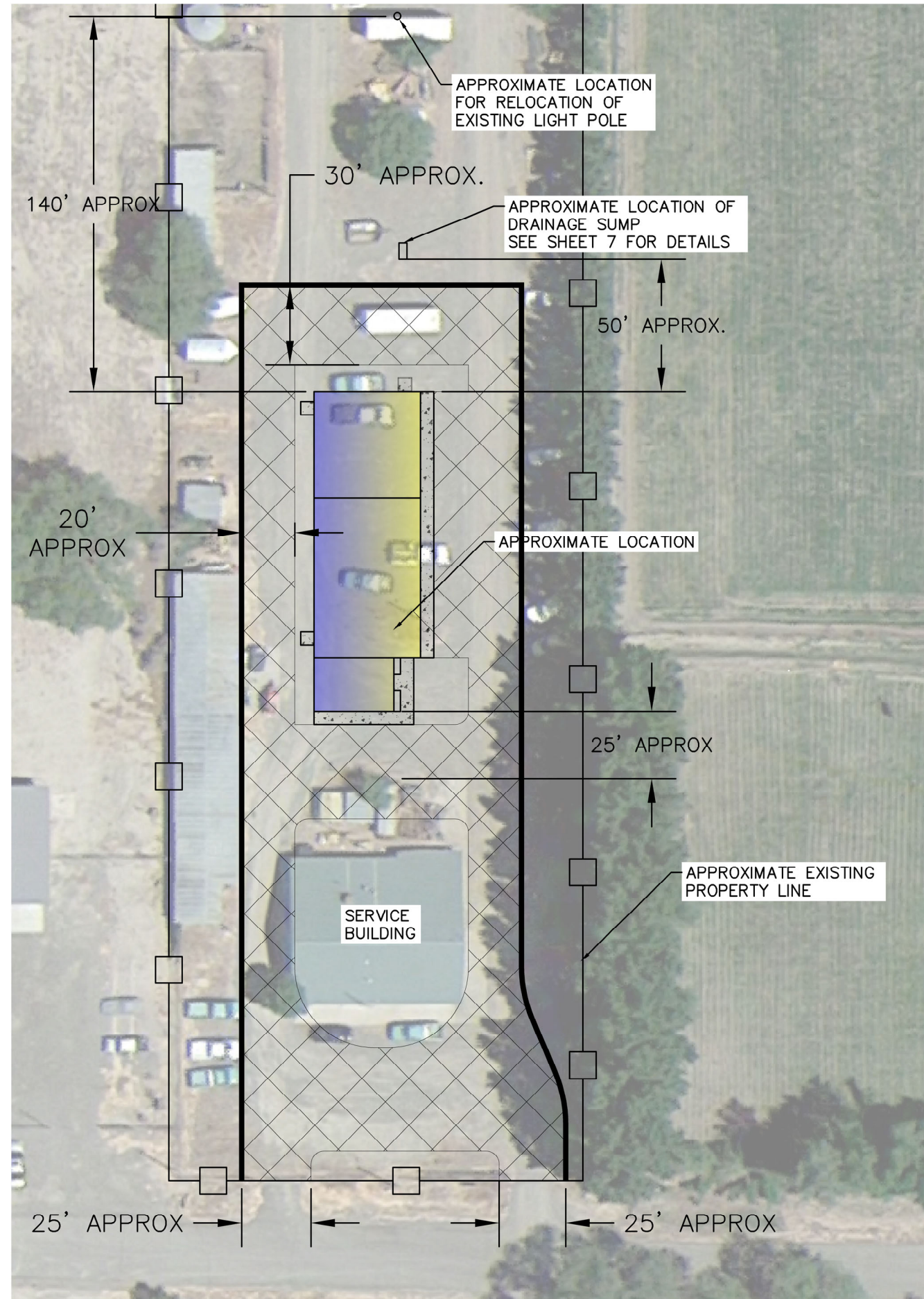
2019-6-17 16:20 DMATOS C:\USERS\DMATOS\GUGIN DELTA\NEW BUILDING\DWG\02_03_04_CIVIL SITE PLAN.DWG;

NOTES:

1. SITE CHARACTERISTIC:
 - 1.1. THE SITE IS APPROXIMATELY 2.6 ACRES.
 - 1.2. THE EXISTING FENCE IS LOCATED APPROXIMATELY OVER THE PROPERTY LINE.
 - 1.3. THE GROUND HAS MINIMAL GRADE CHANGES (MOSTLY FLAT).
2. CONTRACTOR SHALL STAKE APPROXIMATE BUILDING LOCATION. FINAL BUILDING LOCATION SHALL BE APPROVED BY CONTRACTING OFFICER.
3. CONTRACTOR SHALL REMOVE AND SALVAGE THE LIGHT POLE, WATER HYDRANT AND SHUTOFF VALVE. ITEMS SHALL BE STORED ON SITE.
4. MATERIALS AND EQUIPMENT CAN BE STORED AT SITE AS APPROVED BY CO. THE CONTRACTOR SHALL TAKE THE NECESSARY PRECAUTIONS TO PROTECT THE MATERIALS AND EQUIPMENT FROM VANDALISM.
5. INSTALL 4" (COMPACTED) OF CDOT CLASS 4 AGGREGATE SURFACE.



NEW 4" COMPACTED AGGREGATE SURFACE



United States Department of Agriculture
Forest Service

(R02)
ROCKY MOUNTAIN REGION

PROJECT NAME

**NORTH DELTA
STORAGE BUILDING**

**GRAND MESA,
UNCOMPAGRE AND
GUNNISON NATIONAL
FORESTS**

SUPERVISOR'S OFFICE
NORTH DELTA SITE

DRAWING TITLE

**PROPOSED BUILDING
LOCATION**

DATE

XXXX-XX-XX

ARCHIVE NO.

XXX

DESIGNER

X.XXX

DRAWN

X.XXX

CHECKED

X.XXX

PROJECT NO.

DWG SHEET NO.

C-02

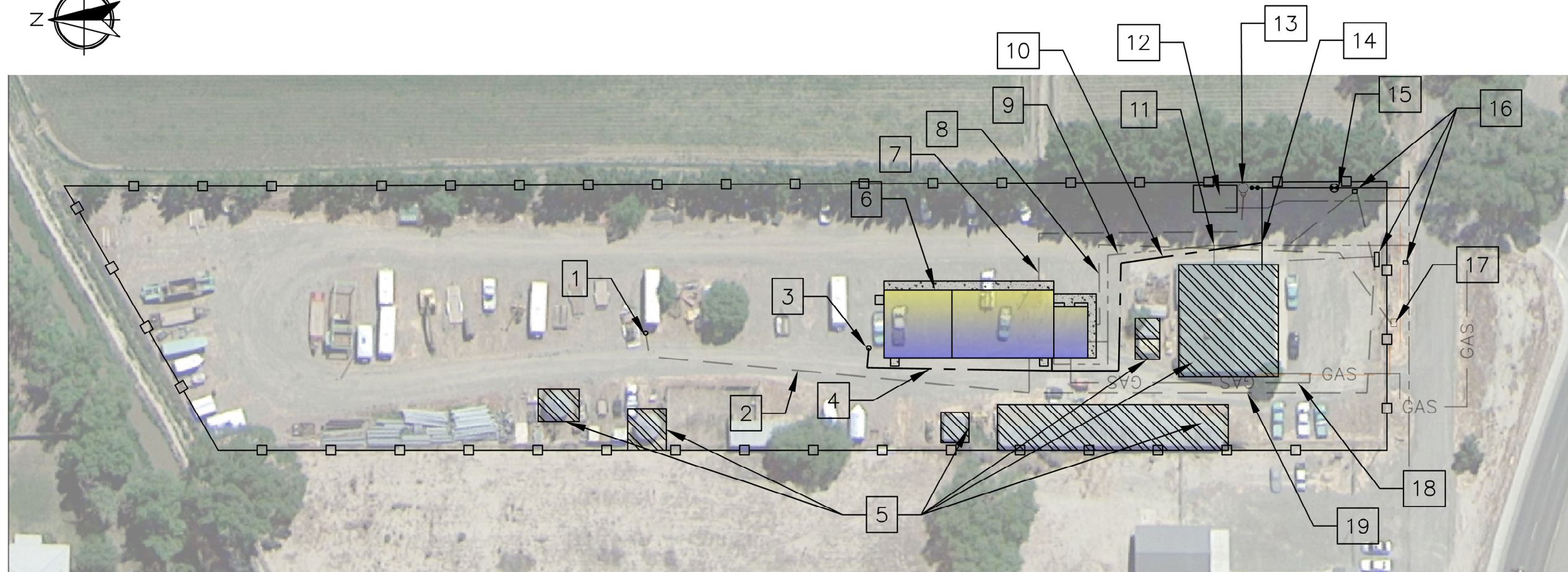
SHEET 3 OF 23

NOTES

1. EXISTING UTILITY LOCATIONS AND LENGTHS ARE APPROXIMATED.
2. CONTRACTOR SHALL LOCATE ALL EXISTING UTILITIES ON SITE.
3. EXISTING ELECTRIC LINES TO GATE MOTOR AND KEY PAD ARE BURIED (NOT IN CONDUIT).
4. NEW UTILITY LINES LOCATIONS SHALL BE STAKED IN THE FIELD BY CONTRACTOR AND APPROVED BY CO.
5. APPROXIMATE SITE LOCATION:
 - 5.1. LATITUDE 38°45'46.64"N
 - 5.2. LONGITUDE 108° 4'23.11"W

KEY NOTES

1. RE-LOCATE EXISTING LIGHT POLE TO 140' NORTH OF NEW BUILDING.
2. NEW ELECTRIC LINE FROM BUILDING TO LIGHT POLE.
3. NEW HYDRANT.
4. NEW 3/4" WATER LINE TO HYDRANT.
5. BUILDINGS TO BE DECOMMISSIONED.
6. NEW BUILDING.
7. NEW ELECTRIC LINE FROM EXISTING ELECTRIC METER.
8. NEW COMMUNICATIONS CONDUIT WITH PULL WIRES TO BUILDING.
9. NEW 4" SEWER LINE TO BUILDING.
10. NEW 1" WATER LINE.
11. NEW SEWER LINE CONNECTION WITH EXISTING SEWER LINE.
12. EXISTING WASH PAD – DO NOT DISTURB.
13. EXISTING POWER POLE WITH ELECTRIC METER – DO NOT DISTURB.
14. NEW WATER LINE CONNECTION WITH EXISTING WATER LINE.
15. EXISTING WATER METER AND WATER MAIN VALVE.
16. EXISTING GATE MOTOR AND CARD READERS.
17. EXISTING COMMUNICATION BOX.
18. NEW 3/4" GAS LINE.
19. NEW ELECTRIC CONDUIT FROM BUILDING TO ELECTRIC GATE AND CARD READERS.



United States Department of Agriculture
Forest Service

(R02)
ROCKY MOUNTAIN REGION

PROJECT NAME

**NORTH DELTA
STORAGE BUILDING**

**GRAND MESA,
UNCOMPAGRE AND
GUNNISON NATIONAL
FORESTS**

SUPERVISOR'S OFFICE
NORTH DELTA SITE

DRAWING TITLE

**PROPOSED UTILITIES
PLAN**

DATE

XXXX-XX-XX

ARCHIVE NO.

XXX

DESIGNER

X.XXX

DRAWN

X.XXX

CHECKED

X.XXX

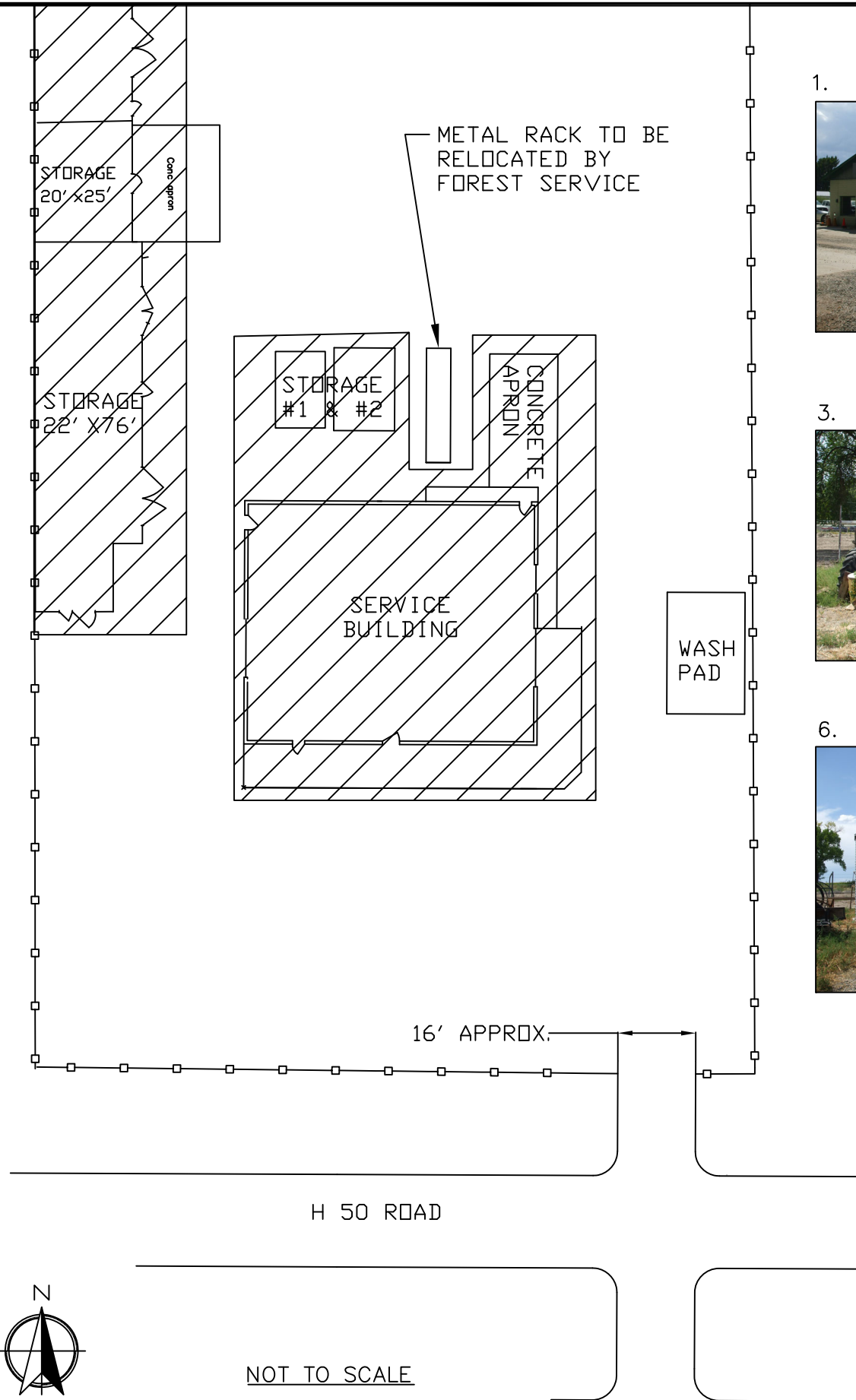
PROJECT NO.

DWG SHEET NO.

C-03

SHEET 4 OF 23

2019-6-14 16:45 DMATOS C:\USERS\DMATOS\GUGIN DELTA\NEW BUILDING\DWG\05_DEMOLITION PLAN.DWG;



BUILDINGS TO BE DEMOLISHED:

1. SERVICE BUILDING: 3,048 SQFT



2. STORAGE BUILDING: 2,727 SQFT



3. FLAMMABLE BUILDING: 144 SQFT .



4. SMALL STORAGE #1: 64 SQFT
5. SMALL STORAGE #2: 70 SQFT



6. SOUTH GRAIN BLDG: 161 SQFT



7. NORTH GRAIN BLDG: 183 SQFT



NOTES:

1. FINISH GRADE SHALL MATCH EXISTING GROUND.
2. ENVIRONMENTAL REPORT SHOWS THE PRESENCE OF ASBESTOS AND LEAD PAINT ON THE SITE (SEE ATTACHED REPORTS FOR SPECIFICS). ADDITIONAL INVESTIGATION MAY BE NEEDED TO PROPERLY DISPOSE BUILDINGS.
3. ASBESTOS SHALL BE REMOVED AND DISPOSED OF IN ACCORDANCE WITH REGULATIONS BY A CERTIFIED CONTRACTOR.
4. THE CONTRACTOR SHALL PROVIDE ASBESTOS REMOVAL PLAN.
5. THE CONTRACTOR SHALL REMOVE ALL CONSTRUCTION DEBRIS AND PROPERLY DISPOSE OUTSIDE FOREST SERVICE PROPERTY.
6. THE FOREST WILL REMOVE/RELOCATE FROM BUILDINGS ANY MATERIAL/EQUIPMENT TO REMAIN AS FOREST PROPERTY.



United States Department of Agriculture
Forest Service

(R02)
ROCKY MOUNTAIN REGION

PROJECT NAME

**NORTH DELTA
STORAGE BUILDING**

**GRAND MESA,
UNCOMPAGRE AND
GUNNISON NATIONAL
FORESTS**

**SUPERVISOR'S OFFICE
NORTH DELTA SITE**

DRAWING TITLE

**DEMOLITION PLAN
(OPTIONAL BID ITEM)**

DATE

XXXX-XX-XX

ARCHIVE NO.

XXX

DESIGNER

X.XXX

DRAWN

X.XXX

CHECKED

X.XXX

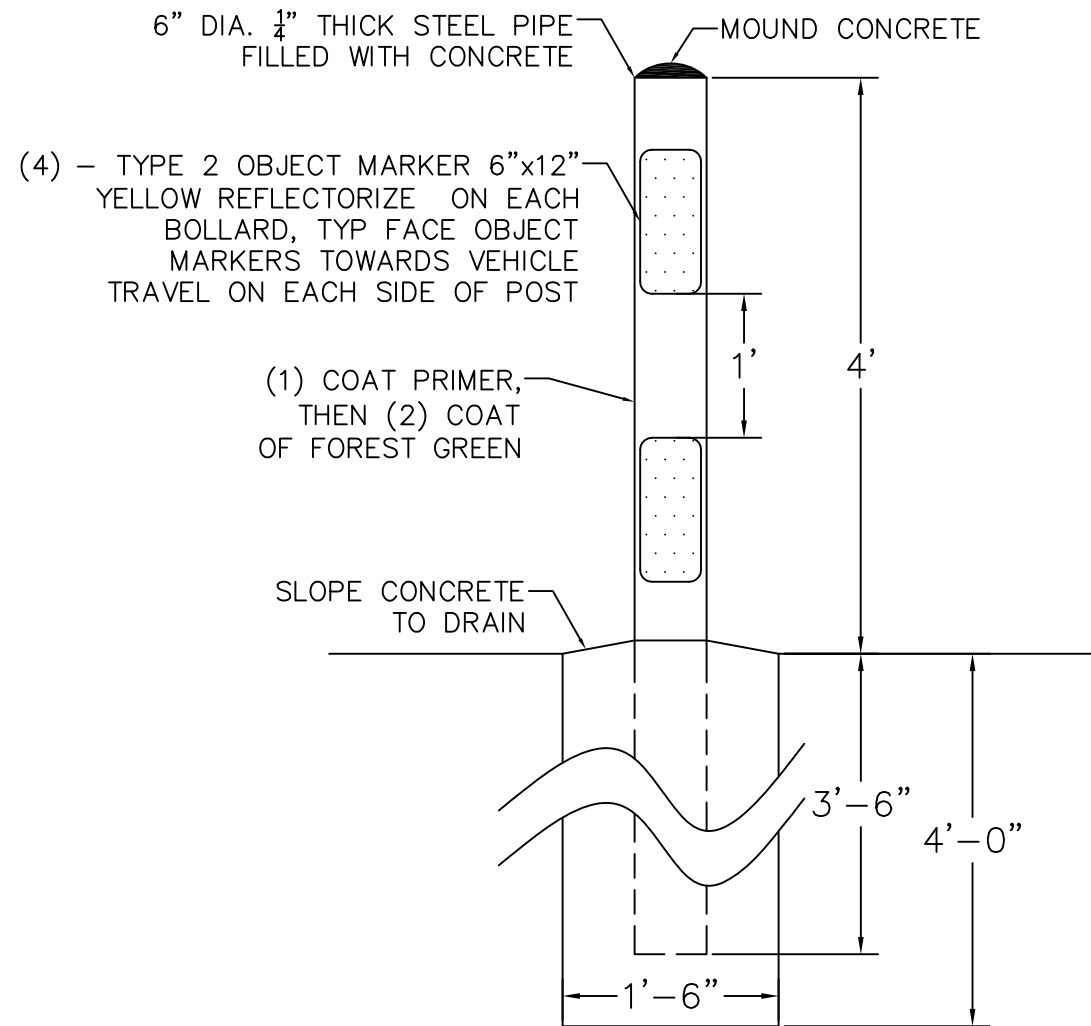
PROJECT NO.

DWG SHEET NO.

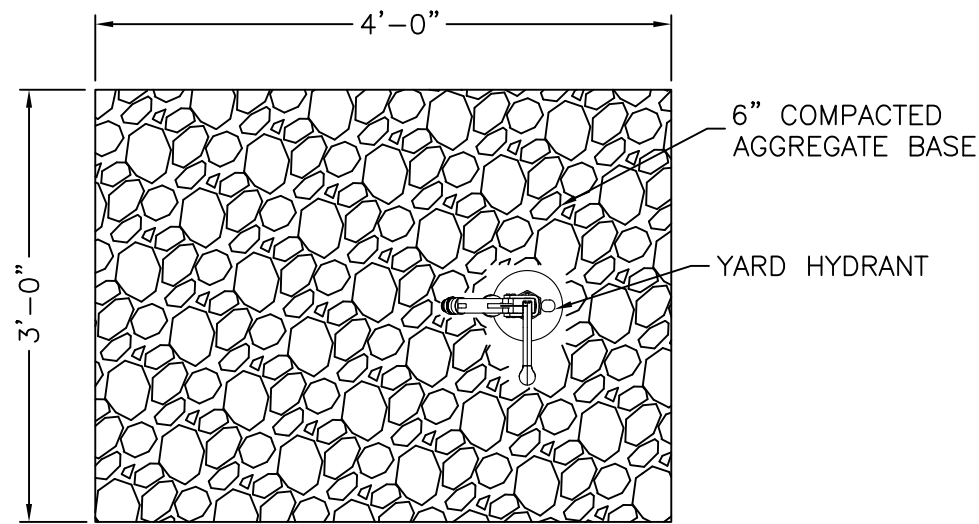
C-04

SHEET 5 OF 23

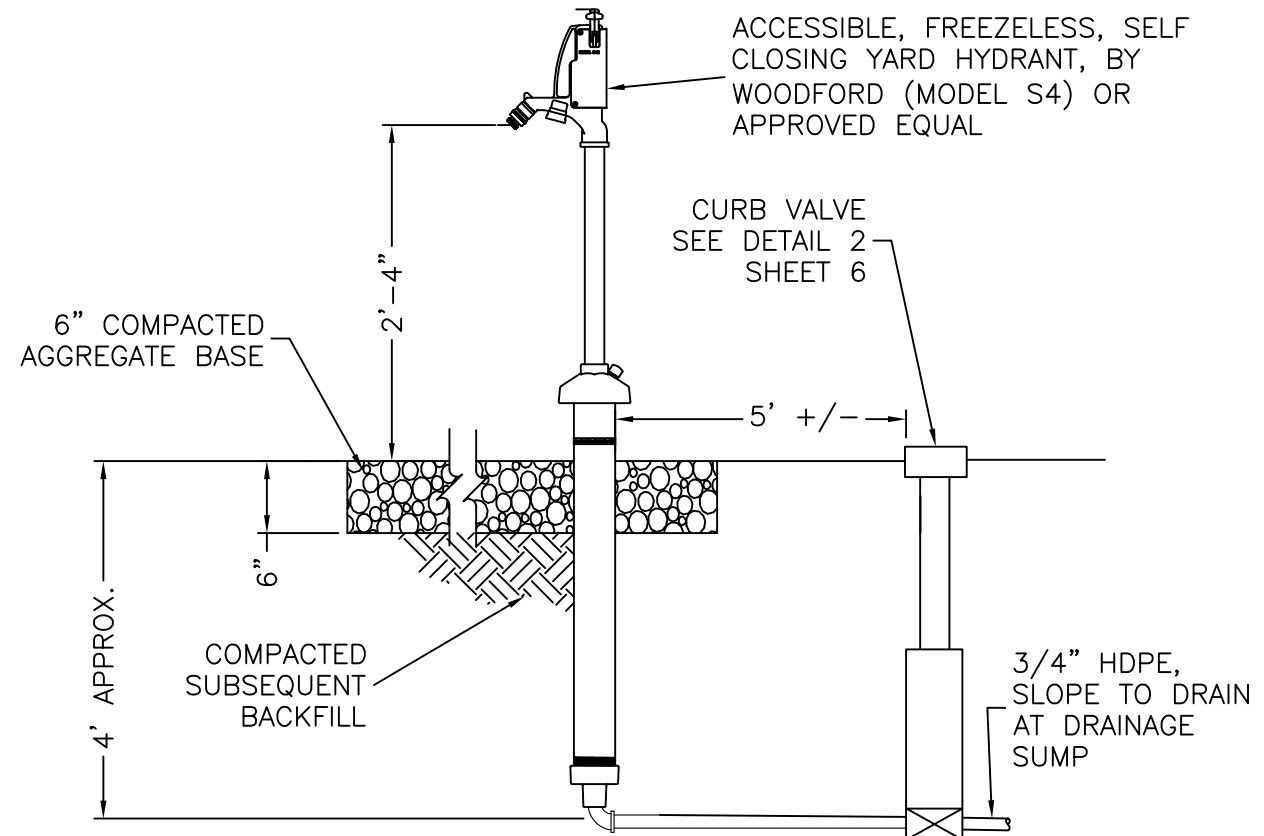
2019-6-14 16:45 DMATOS C:\USERS\DMATOS\G\IN DELTA\NEW BUILDING\DWG\06_07_TRENCH & HYDRANT.DWG;



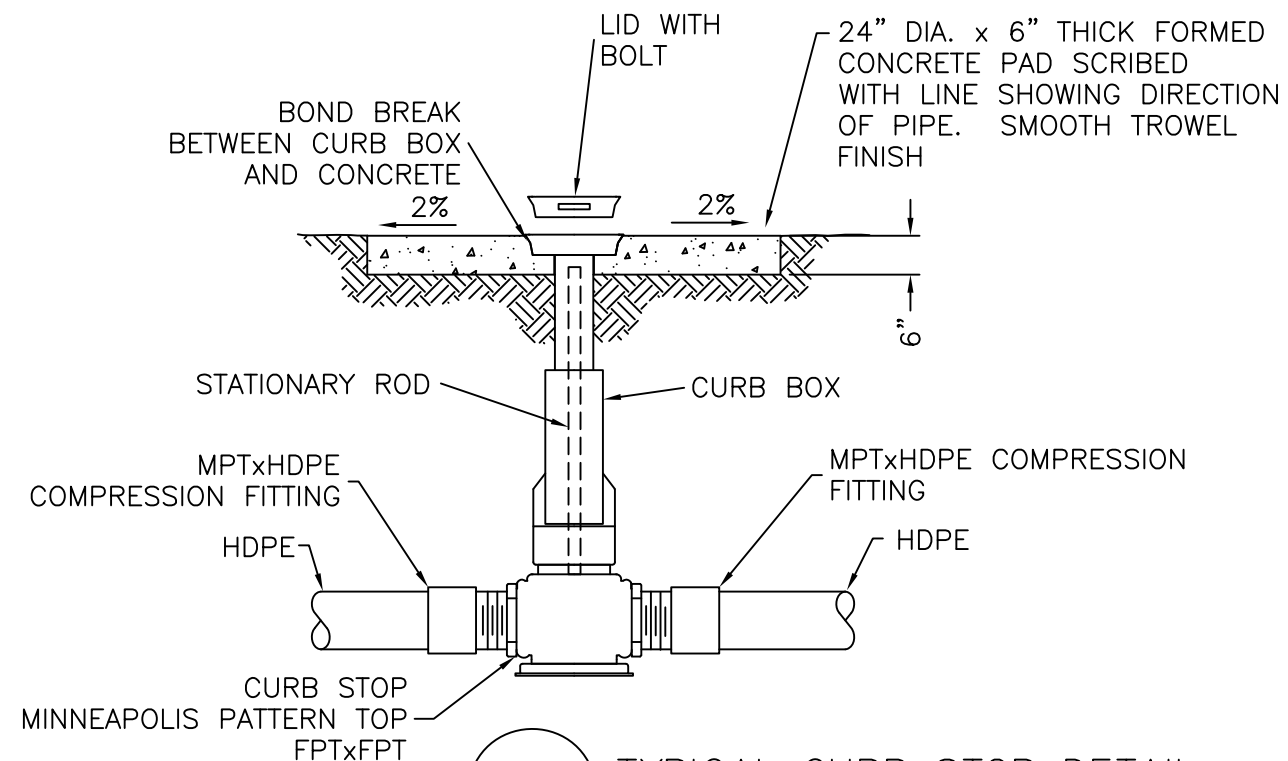
4 BOLLARD DETAIL
NOT TO SCALE



3 WATER HYDRANT GRAVEL PAD
NOT TO SCALE



1 HYDRANT DETAIL
NOT TO SCALE



2 TYPICAL CURB STOP DETAIL
NOT TO SCALE



United States Department of Agriculture
Forest Service

(R02)
ROCKY MOUNTAIN REGION

PROJECT NAME

**NORTH DELTA
STORAGE BUILDING**

**GRAND MESA,
UNCOMPAGRE AND
GUNNISON NATIONAL
FORESTS**

SUPERVISOR'S OFFICE
NORTH DELTA SITE

DRAWING TITLE

**HYDRANT AND
BOLLARD DETAILS**

DATE

XXXX-XX-XX

ARCHIVE NO.

XXX

DESIGNER

X.XXX

DRAWN

X.XXX

CHECKED

X.XXX

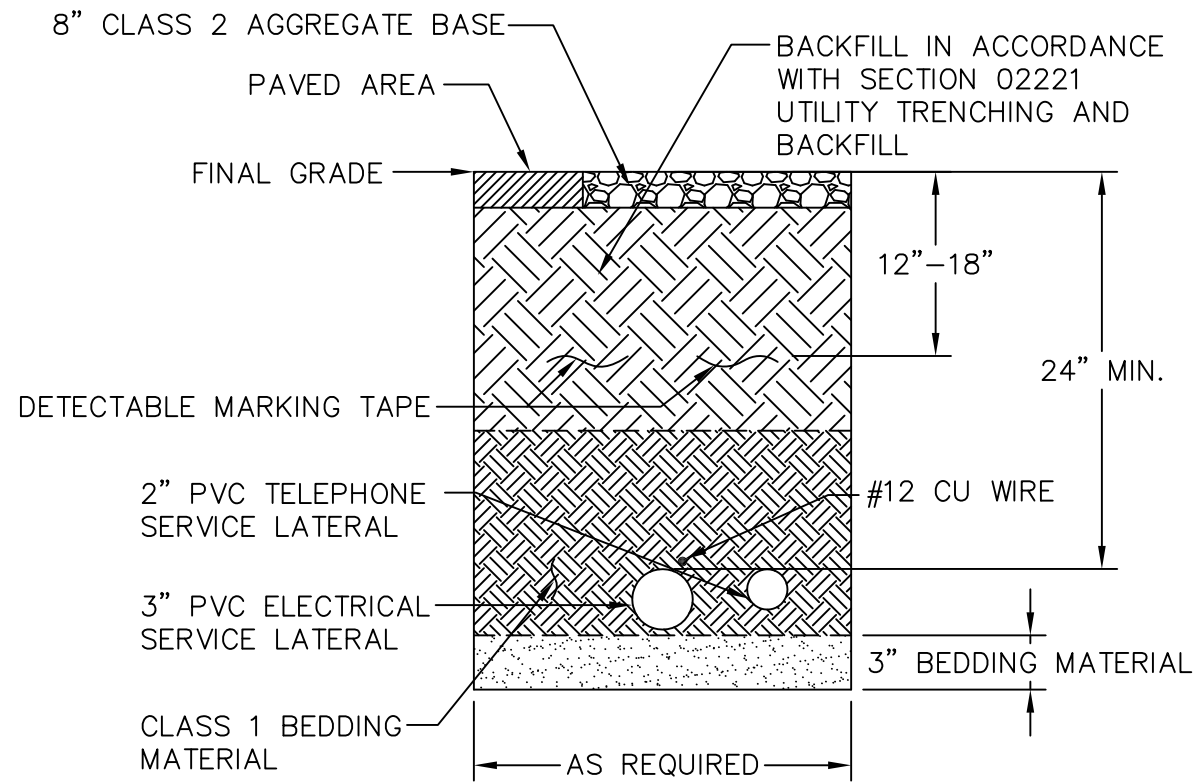
PROJECT NO.

DWG SHEET NO.

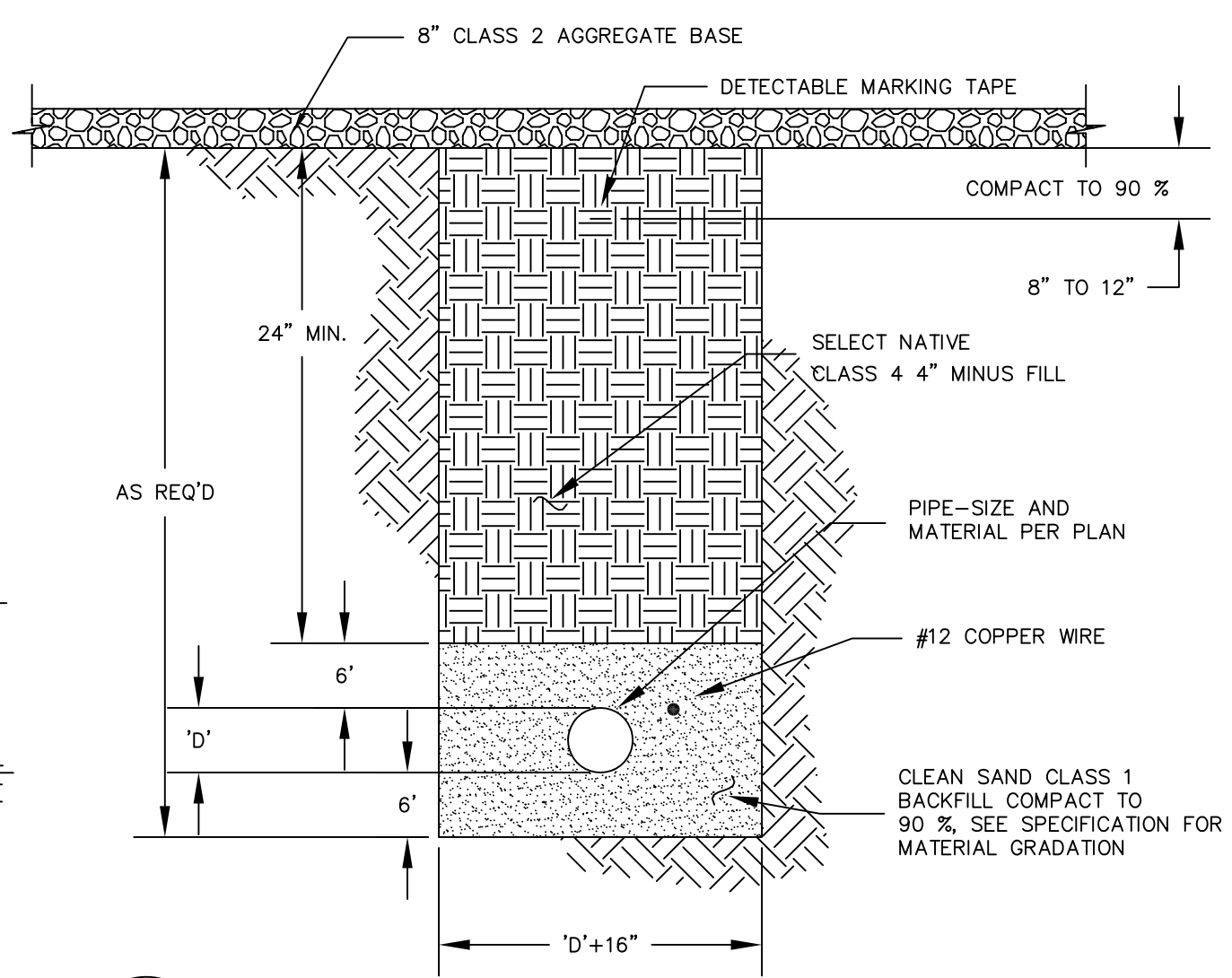
C-05

SHEET 6 OF 23

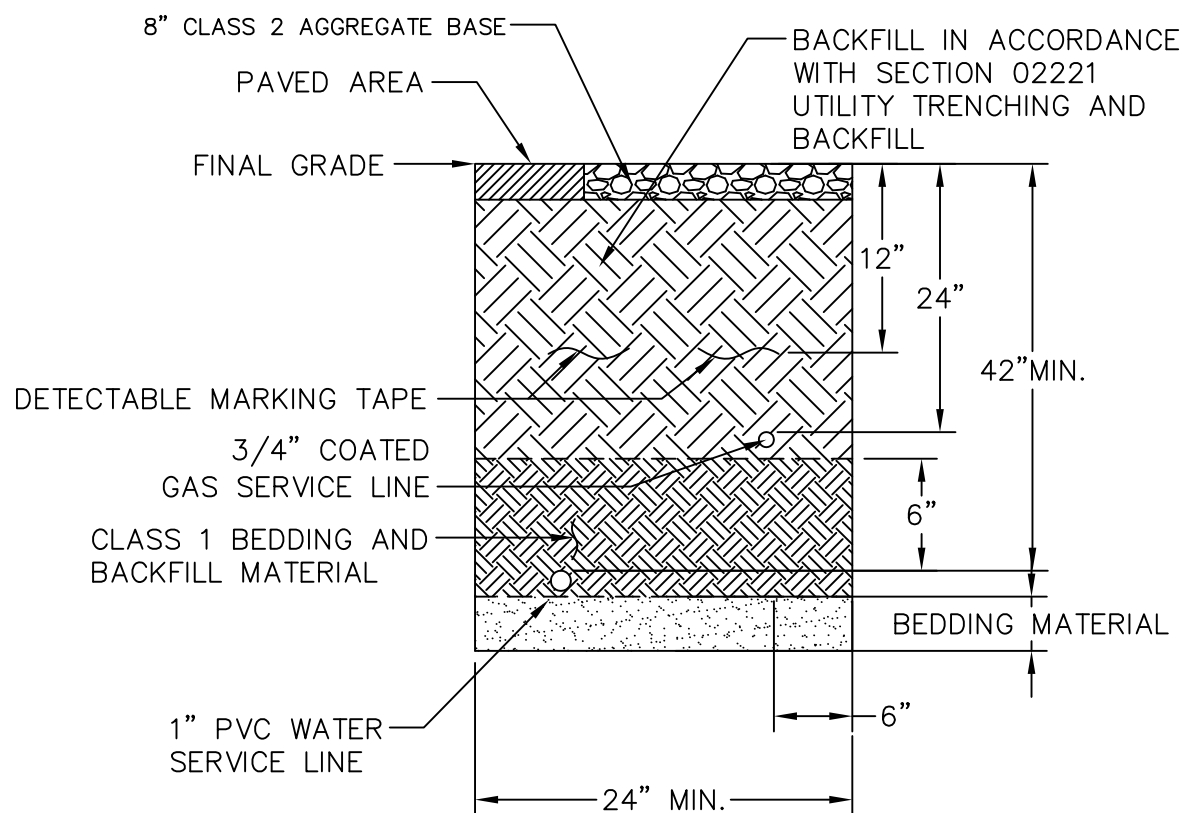
2019-6-14 16:45 DMATOS C:\USERS\DMATOS\GUGIN DELTA\NEW BUILDING\DWG\06_07_TRENCH & HYDRANT.DWG;



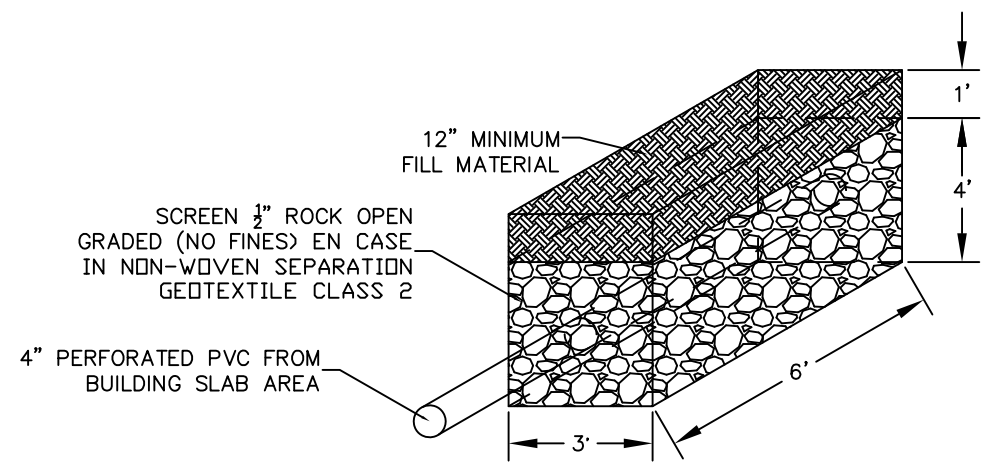
1 ELECTRICAL/TELEPHONE SERVICE LATERAL
NOT TO SCALE



3 SEWER TRENCH DETAIL - ROADWAY SECTION
NOT TO SCALE



2 WATER AND GAS UTILITY TRENCH
NOT TO SCALE



4 DRAINAGE SUMP
NOT TO SCALE

United States Department of Agriculture
Forest Service

(R02)
ROCKY MOUNTAIN REGION

PROJECT NAME

NORTH DELTA STORAGE BUILDING

GRAND MESA, UNCOMPAGRE AND GUNNISON NATIONAL FORESTS

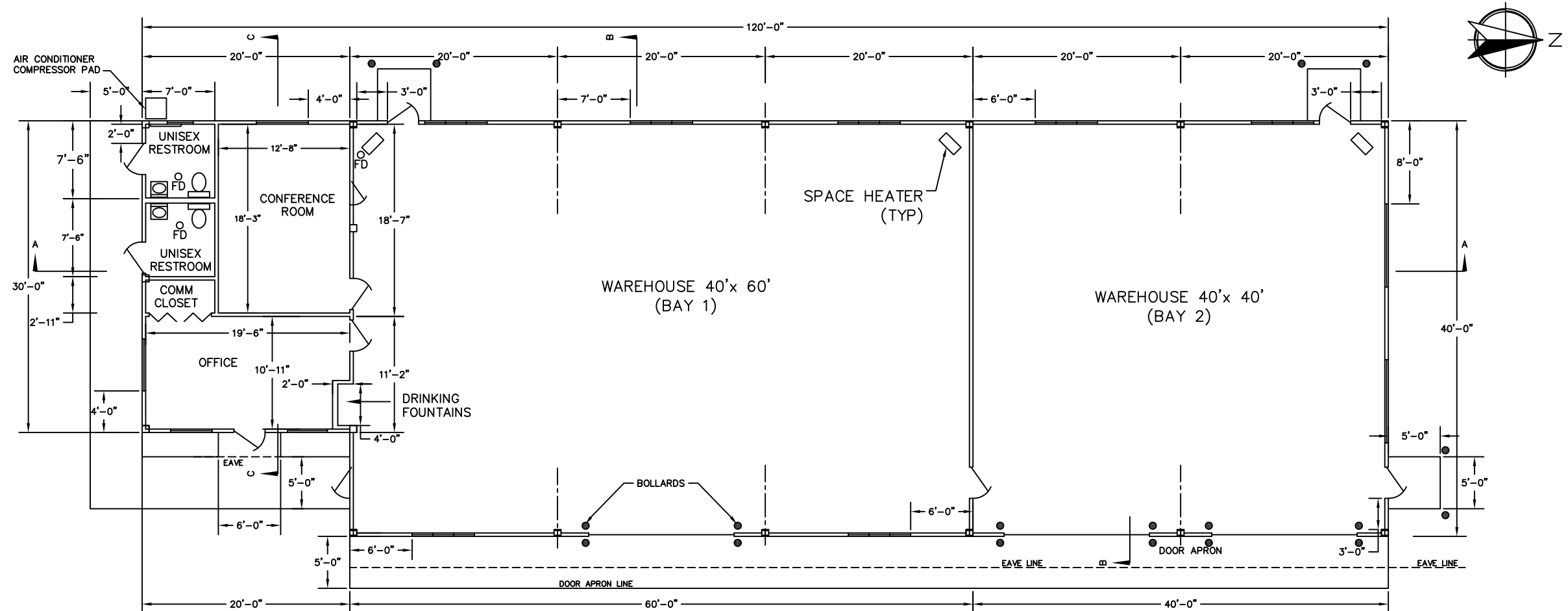
SUPERVISOR'S OFFICE
NORTH DELTA SITE

DRAWING TITLE

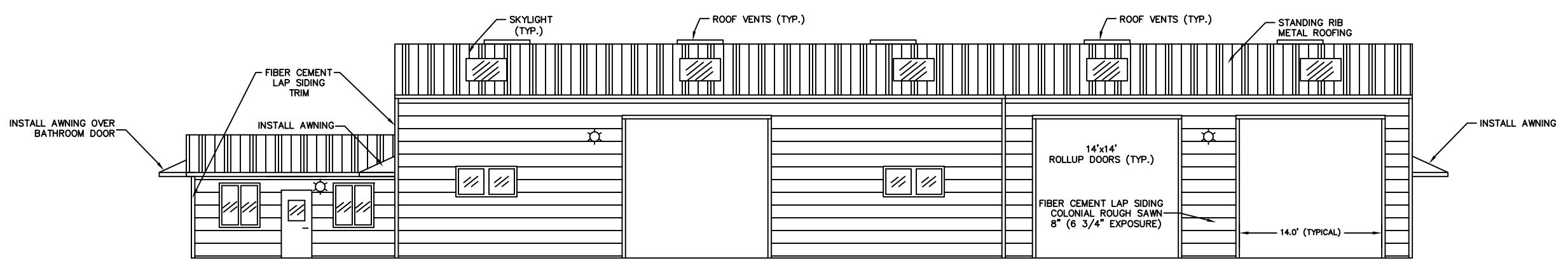
UTILITIES TRENCH DETAILS

DATE XXXX-XX-XX	
ARCHIVE NO. XXX	
DESIGNER X.XXX	DWG SHEET NO. C-06
DRAWN X.XXX	
CHECKED X.XXX	
PROJECT NO.	SHEET 7 OF 23

2019-6-24 08:35 DMATOS C:\USERS\DMATOS\GUGIN DELTA\NEW BUILDING\DWG08_09_ELEVATIONS.DWG;

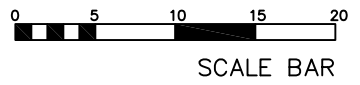


FLOOR PLAN



WEST ELEVATION

- NOTES:
1. CONTRACTOR SHALL SUBMIT BUILDING SPECIFICATIONS AND RECEIVE WRITTEN APPROVAL FROM CONTRACTING OFFICER BEFORE ORDERING BUILDING MATERIALS.
 2. EXIT DOORS AT BAY 1 AND 2 CAN BE RELOCATED PER MANUFACTURERS RECOMMENDATION. FINAL LOCATION OF EXIT DOORS SHALL BE APPROVED BY CONTRACTING OFFICER.
 3. SKYLIGHTS SHALL BE DYNAMIC DOME WITH IMPACT MODIFIED ACRYLIC BY VELUX OR APPROVED EQUAL. SKYLIGHT DIMENSION 4'x8'.
 4. EXHAUST PIPES NOT SHOWN FOR CLARITY.



(R02)
ROCKY MOUNTAIN REGION

PROJECT NAME
NORTH DELTA STORAGE BUILDING

GRAND MESA, UNCOMPAGRE AND GUNNISON NATIONAL FORESTS

SUPERVISOR'S OFFICE
NORTH DELTA SITE

DRAWING TITLE
FLOOR PLAN & ELEVATION

DATE
XXXX-XX-XX

ARCHIVE NO.
XXX

DESIGNER
X.XXX

DWG SHEET NO.
A-01

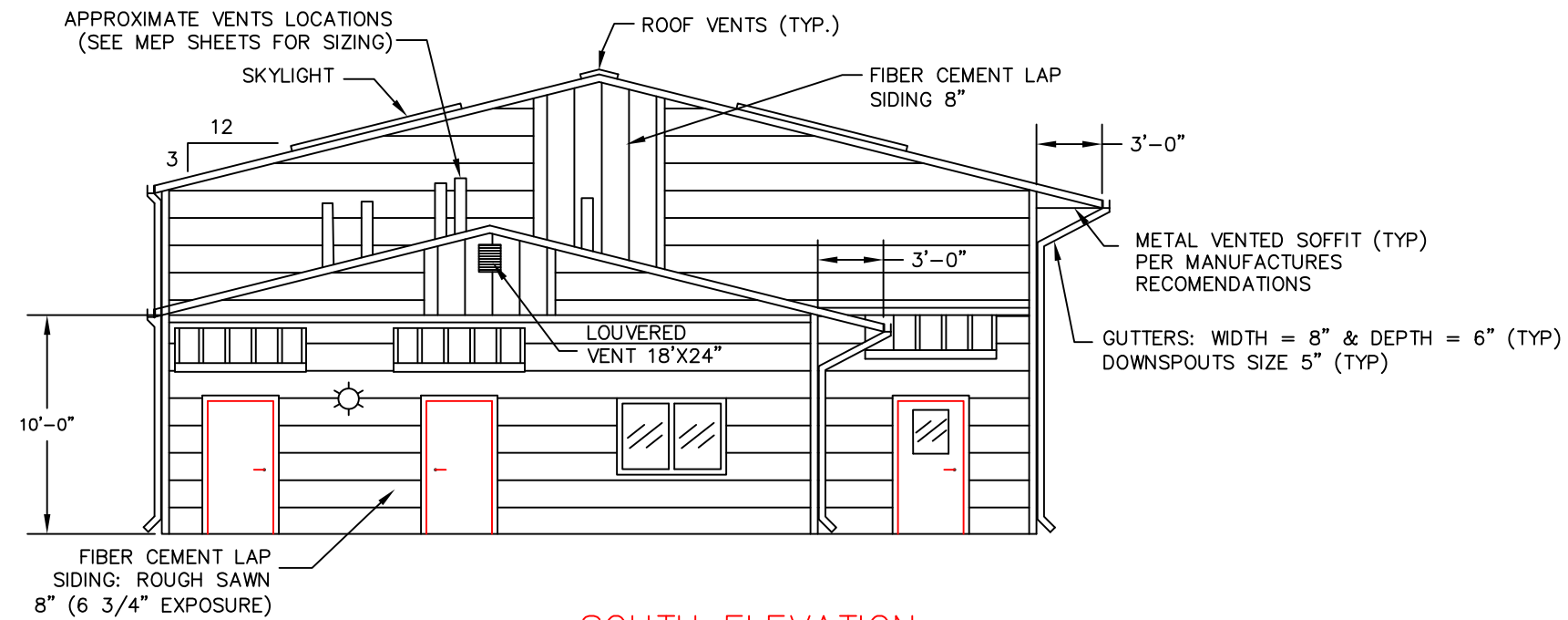
DRAWN
X.XXX

CHECKED
X.XXX

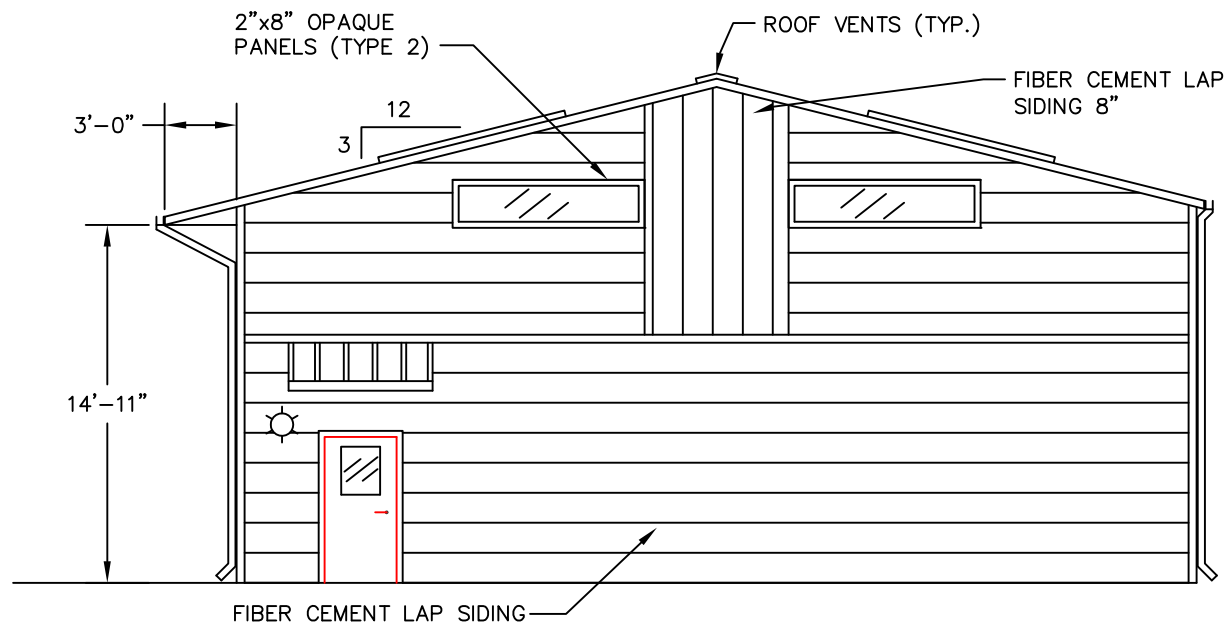
PROJECT NO.

SHEET 8 OF 23

2019-6-24 08:35 DMATOS C:\USERS\DMATOS\GUGIN DELTA\NEW BUILDING\DWG\08_09_ELEVATIONS.DWG;



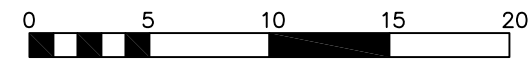
SOUTH ELEVATION



NORTH ELEVATION

DESIGN CRITERIA – INTERNATIONAL BUILDING CODE 2018

SNOW LOAD — — — 30 POUNDS PER SQUARE FOOT
 WIND LOAD — — — 90 MILES PER HOUR, EXPOSURE C
 SEISMIC DESIGN CATEGORY C



SCALE BAR



United States Department of Agriculture
 Forest Service

(R02)
 ROCKY MOUNTAIN REGION

PROJECT NAME

**NORTH DELTA
 STORAGE BUILDING**

**GRAND MESA,
 UNCOMPAGRE AND
 GUNNISON NATIONAL
 FORESTS**

**SUPERVISOR'S OFFICE
 NORTH DELTA SITE**

DRAWING TITLE

BUILDING ELEVATION

DATE

XXXX-XX-XX

ARCHIVE NO.

XXX

DESIGNER

X.XXX

DRAWN

X.XXX

CHECKED

X.XXX

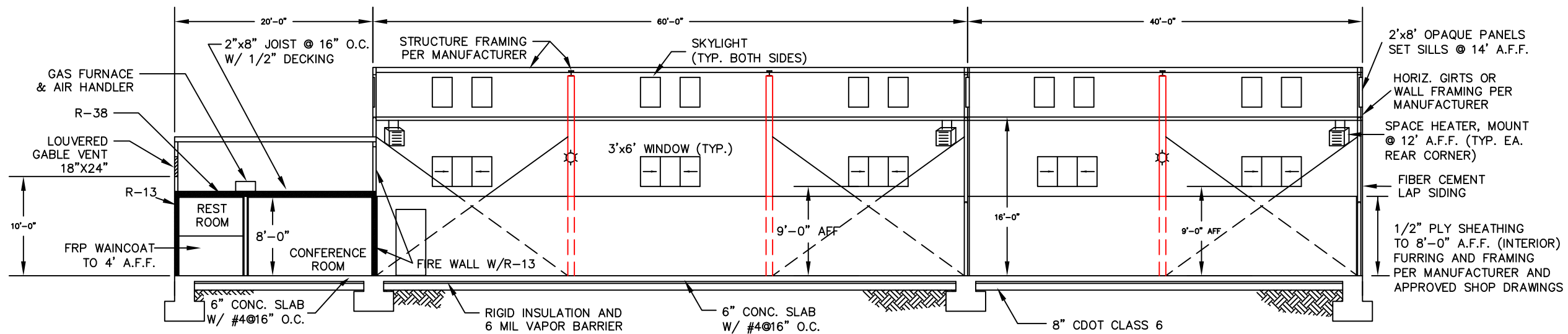
PROJECT NO.

DWG SHEET NO.

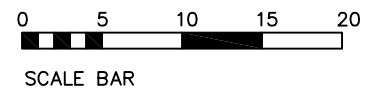
A-02

SHEET 9 OF 23

2019-6-24 08:37 DMATOS C:\USERS\DMATOS\GUGIN DELTA\NEW BUILDING\DWG\10_11_12_BUILD SECTIONS.DWG;



SECTION A



United States Department of Agriculture
Forest Service

(R02)
ROCKY MOUNTAIN REGION

PROJECT NAME

NORTH DELTA STORAGE BUILDING

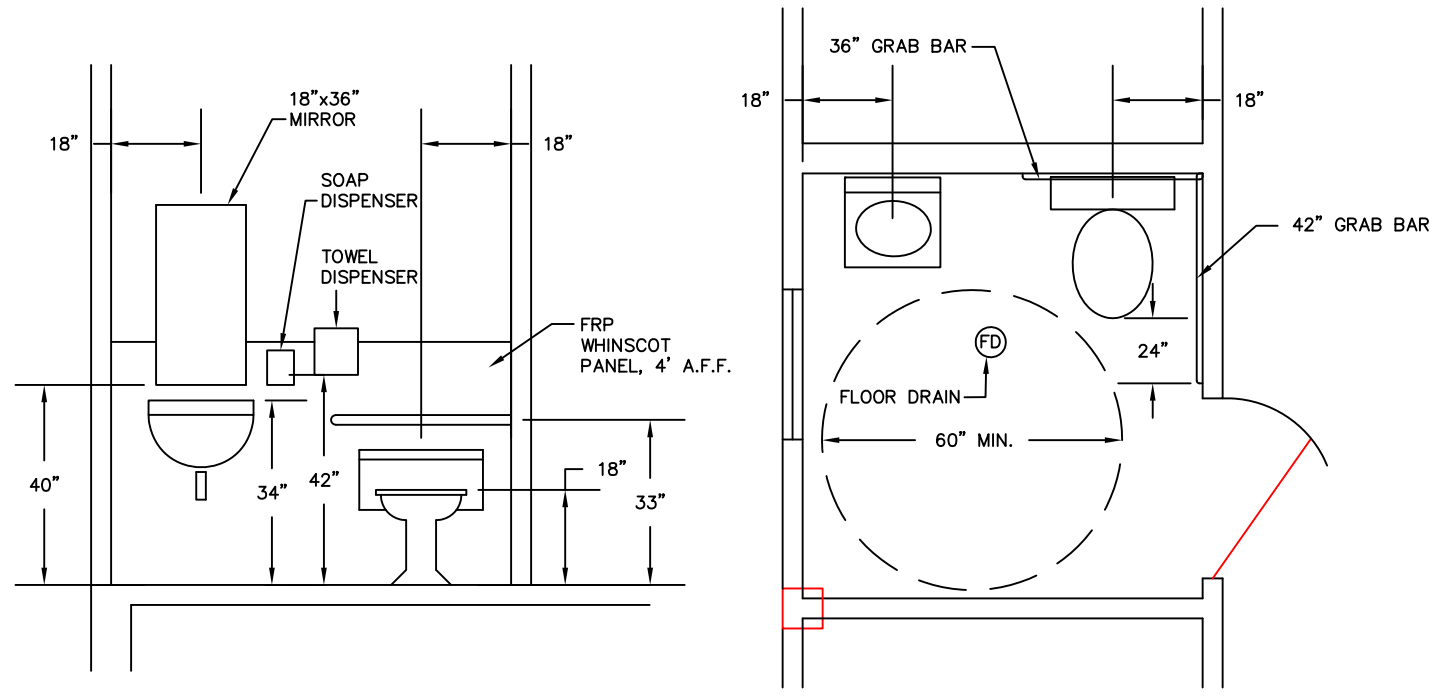
GRAND MESA, UNCOMPAGRE AND GUNNISON NATIONAL FORESTS

SUPERVISOR'S OFFICE
NORTH DELTA SITE

DRAWING TITLE

BUILDING SECTION AND BATHROOM LAYOUT

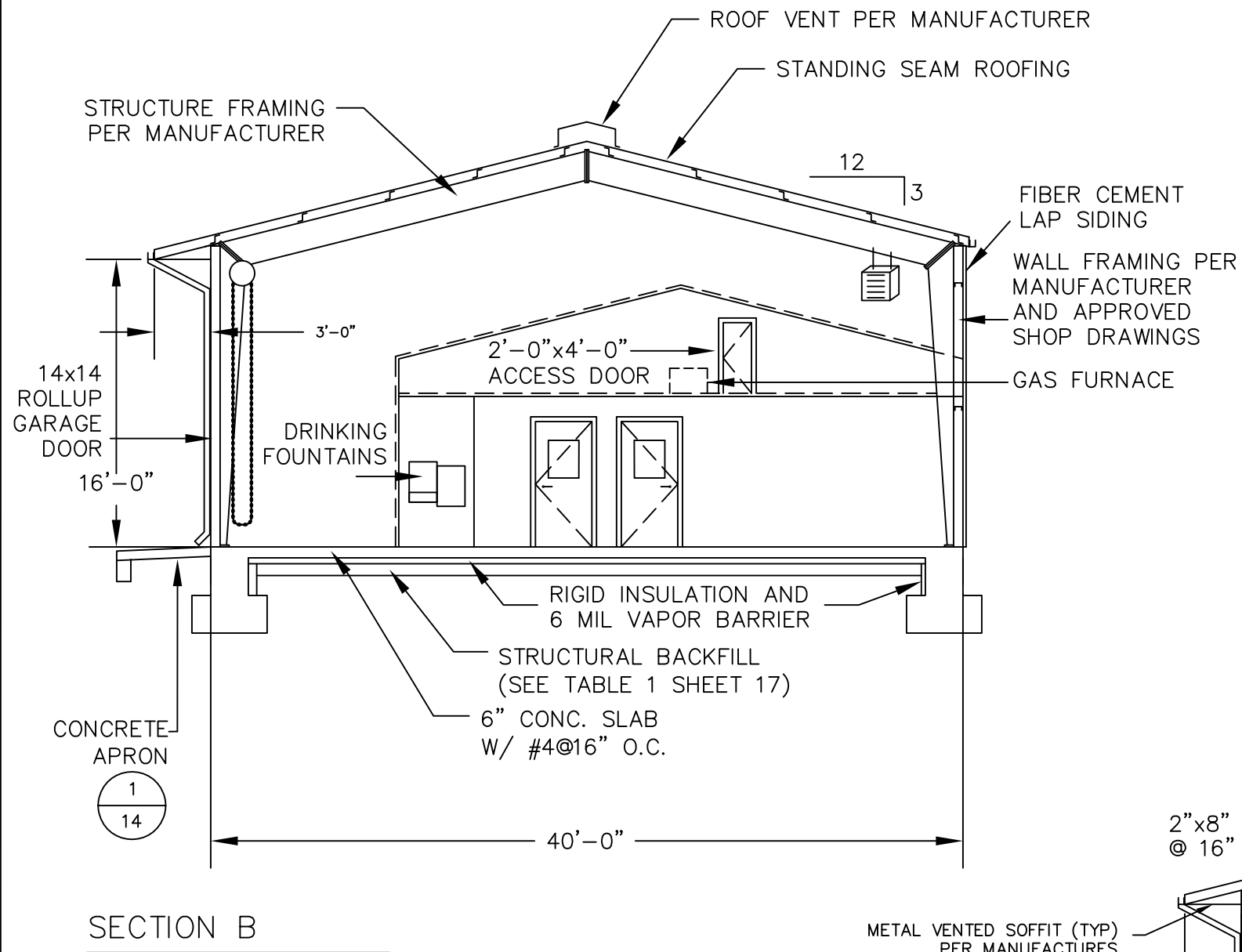
DATE XXXX-XX-XX	
ARCHIVE NO. XXX	
DESIGNER X.XXX	DWG SHEET NO. A-03
DRAWN X.XXX	
CHECKED X.XXX	
PROJECT NO.	SHEET 10 OF 23



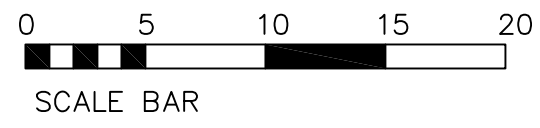
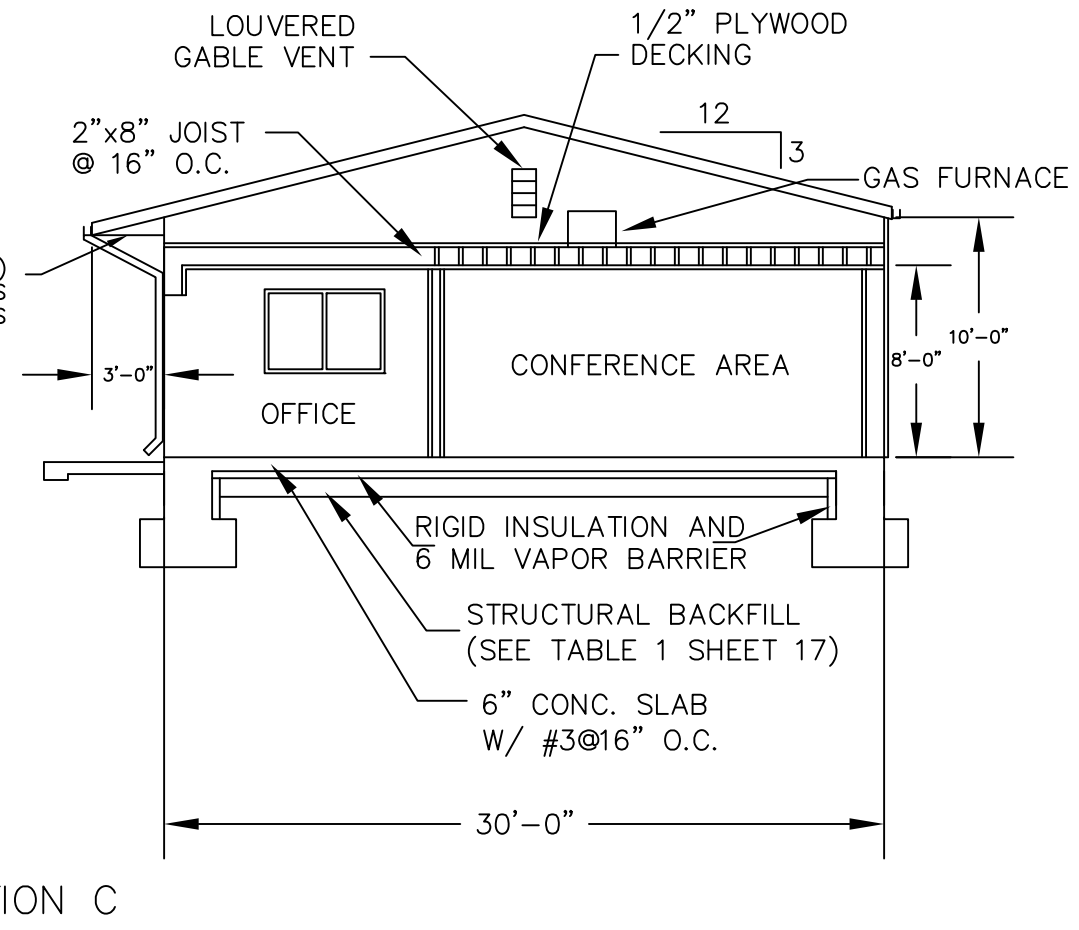
RESTROOM LAYOUT

NOT TO SCALE

2019-6-24 08:37 DMATOS C:\USERS\DMATOS\GUGIN DELTA\NEW BUILDING\DWG\10_11_12_BUILD SECTIONS.DWG;



- NOTES:
- MINIMUM INSULATION REQUIREMENTS:
1. CEILING - R VALUE 38
 2. WOOD FRAME WALL R VALUE 20
 3. ROOFS:
 - 3.1. METAL BUILDINGS: R19 +R11 LS
 - 3.2. ATTIC AND OTHER: R38
 4. WALLS:
 - 4.1. METAL BUILDING: R 13 + R13CI
 - 4.2. METAL FRAMED: R13 + R7.5CI
 5. UNHEATED SLABS: R10 FOR 24" BELOW
 6. DOORS, NONSWINGING: R4.75
 7. WINDOWS: U-FACTORS
 - 7.1. FIXED: 0.38
 - 7.2. OPERABLE: 0.45
 - 7.3. ENTRANCE DOORS: 0.77
 - 7.4. SHGC:
 - 7.4.1. SEW WINDOWS: 0.36
 - 7.4.2. N WINDOWS: 0.48
 - 7.5. SKYLIGHTS:
 - 7.5.1. U-FACTOR: 0.5
 - 7.5.2. SHGC: 0.40



United States Department of Agriculture
Forest Service

(R02)
ROCKY MOUNTAIN REGION

PROJECT NAME

NORTH DELTA STORAGE BUILDING

GRAND MESA, UNCOMPAGRE AND GUNNISON NATIONAL FORESTS

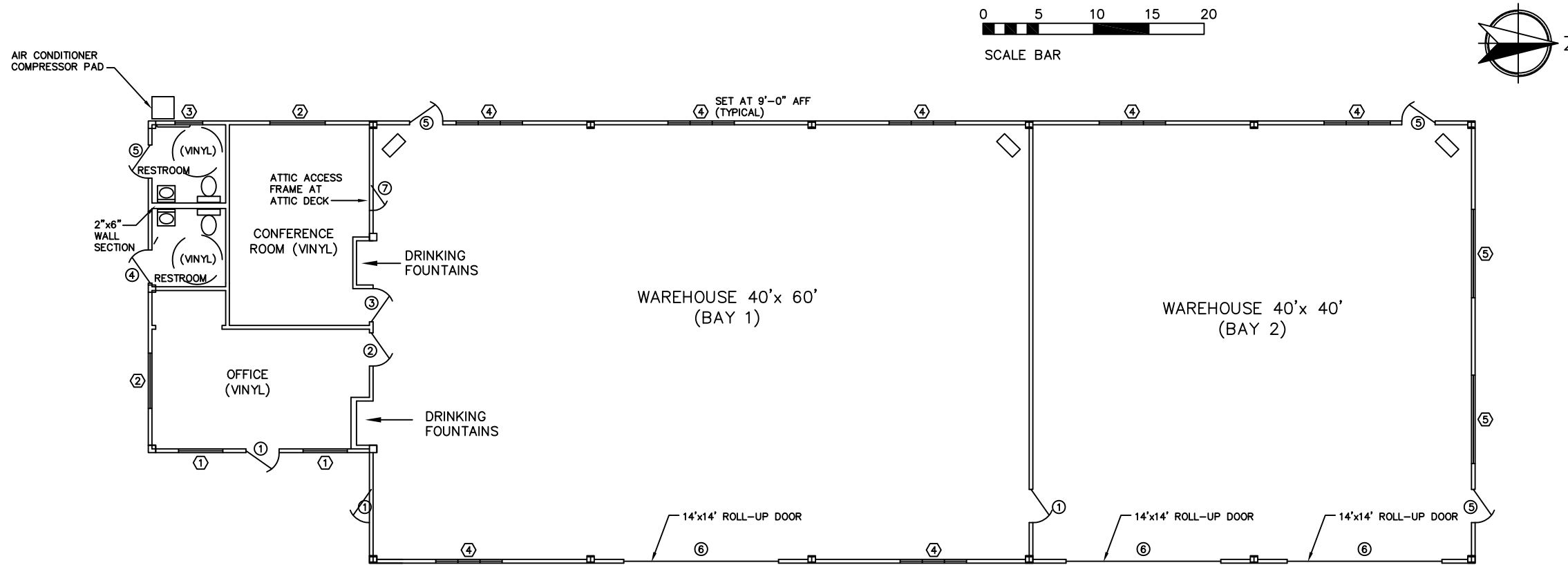
SUPERVISOR'S OFFICE NORTH DELTA SITE

DRAWING TITLE

BUILDING SECTIONS

DATE XXXX-XX-XX	
ARCHIVE NO. XXX	
DESIGNER X.XXX	DWG SHEET NO. A-04
DRAWN X.XXX	
CHECKED X.XXX	
PROJECT NO.	SHEET 11 OF 23

2019-6-24 08:37 DMATOS C:\USERS\DMATOS\GUGIN DELTAIN NEW BUILDING\DWG10_11_12_BUILD SECTIONS.DWG;



WINDOW SCHEDULE

SYMBOL	SIZE	MATERIAL	GLAZING	TYPE	REMARKS
①	4'-0"x4'-0"	VINYL	CLEAR	1	OFFICE WINDOW
②	4'-0"x5'-0"	VINYL	CLEAR	1	OFFICE WINDOW
③	2'-0"x2'-0"	VINYL	OBSCURE	1	RESTROOM WINDOW
④	3'-0"x6'-0"	VINYL	CLEAR	1A	WAREHOUSE SILL @ 9'-0" A.F.F.
⑤	2'-0"x8'-0"	VINYL	OBSCURE	2	WAREHOUSE SILL @ 14'-0" A.F.F.

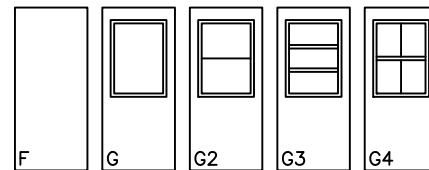
DOOR SCHEDULE

SYMBOL	FACING	TYPE	GLASS	SIZE	REMARK
①	STEEL	G	SAFETY	3'-0"x6'-8"x1 3/4"	EXTERIOR ENTRANCE
②	STEEL	N-4	SAFETY	3'-0"x6'-8"x1 3/4"	FIRE RATED PASSAGE
③	STEEL	N-4	SAFETY	3'-0"x6'-8"x1 3/4"	FIRE RATED PASSAGE
④	STEEL	F	-	3'-0"x6'-8"x1 3/4"	EXTERIOR PASSAGE
⑤	STEEL	F	-	3'-0"x6'-8"x1 3/4"	EXTERIOR ENTRANCE
⑥	STEEL	-	-	14'-0"x14'-0"	OVERHEAD COILING
⑦	STEEL	F	-	2'-0"x4'-0"	ATTIC ACCESS FIRE RATED

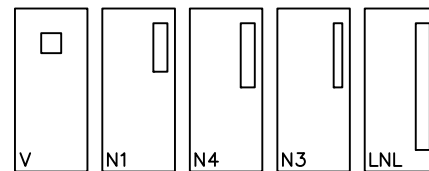
NOTES:

- EXIT DOORS AT BAY 1 AND 2 CAN BE RELOCATED PER MANUFACTURERS RECOMMENDATION. FINAL LOCATION OF EXIT DOORS SHALL BE APPROVED BY CONTRACTING OFFICER.
- EXTERIOR DOOR HANDLES SHALL BE ADA APPROVE AND PUSH BARS FROM THE INTERIOR.
- FIRE RATED DOORS SHALL HAVE AUTOMATIC CLOSURES.

DOOR TYPES

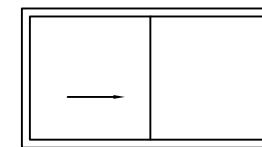


FULL FLUSH PANEL AND HALF-GLASS DOORS

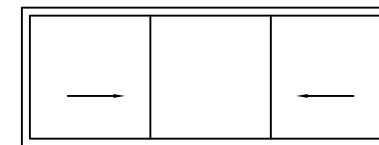


DOORS WITH GLASS LIGHTS

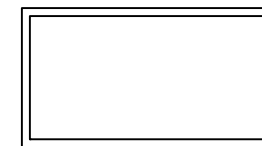
WINDOW TYPES



TYPE 1



TYPE 1A



TYPE 2

— OPENING/SLIDE DIRECTION

NOT TO SCALE



United States Department of Agriculture
Forest Service

(R02)
ROCKY MOUNTAIN REGION

PROJECT NAME

**NORTH DELTA
STORAGE BUILDING**

**GRAND MESA,
UNCOMPAGRE AND
GUNNISON NATIONAL
FORESTS**

SUPERVISOR'S OFFICE
NORTH DELTA SITE

DRAWING TITLE

**DOOR AND WINDOW
SCHEDULE**

DATE

XXXX-XX-XX

ARCHIVE NO.

XXX

DESIGNER

X.XXX

DRAWN

X.XXX

CHECKED

X.XXX

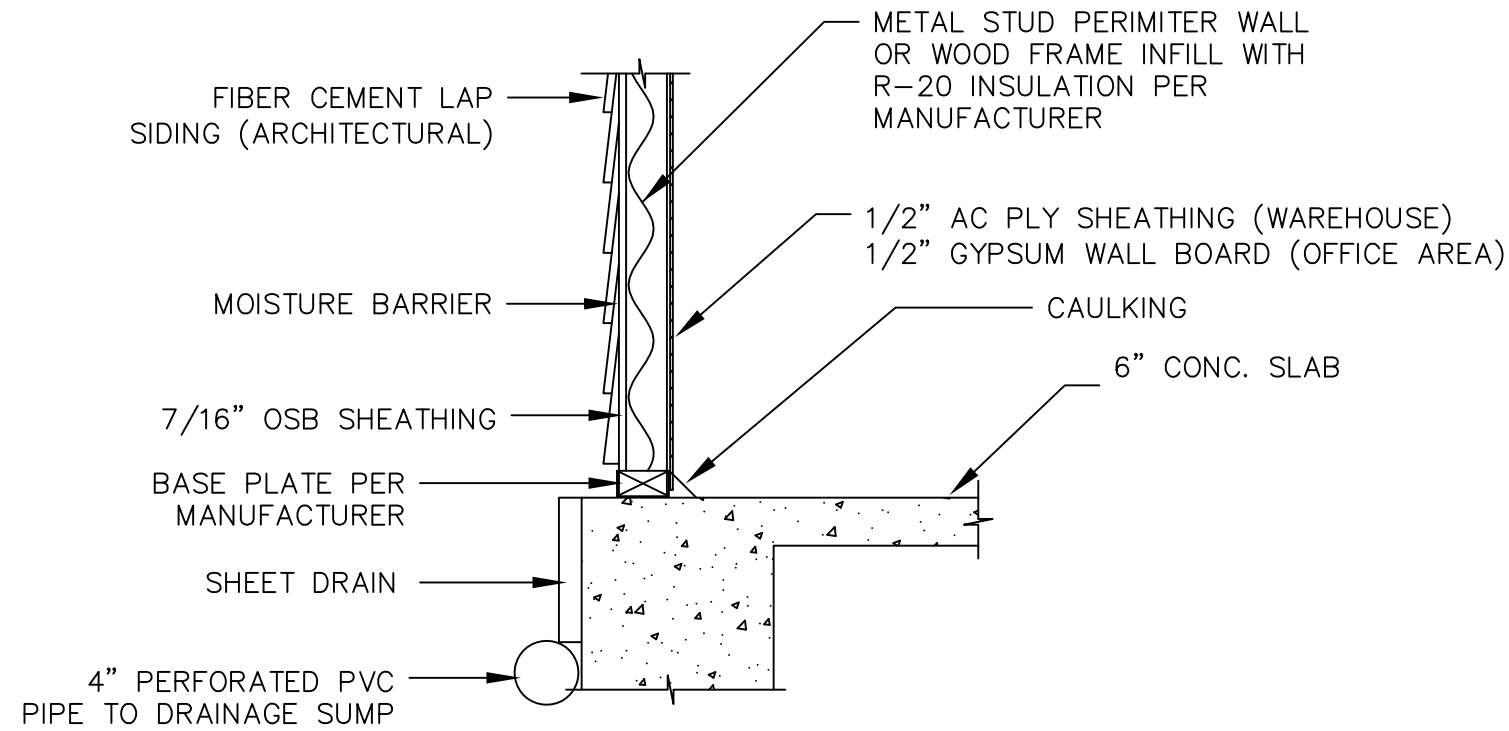
PROJECT NO.

DWG SHEET NO.

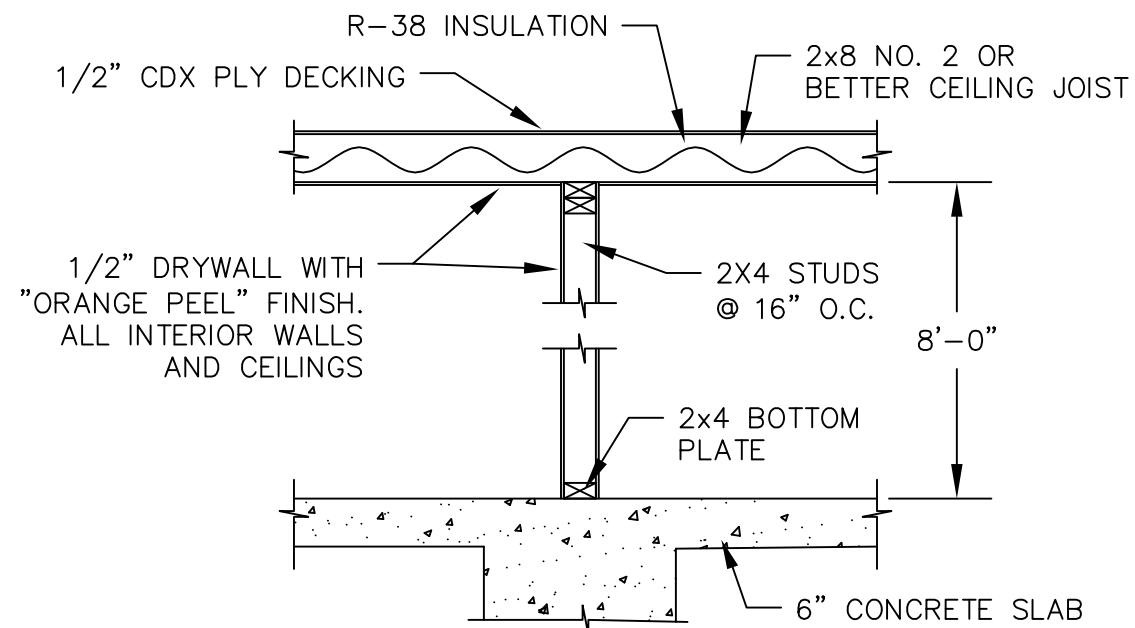
A-05

SHEET 12 OF 23

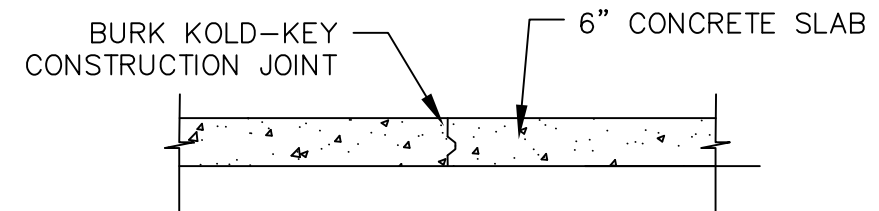
2019-6-24 09:14 DMATOS C:\USERS\DMATOS\GUGIN DELTA\NEW BUILDING\DWG\13_TO_17_STRUCTURAL DETAILS.DWG;



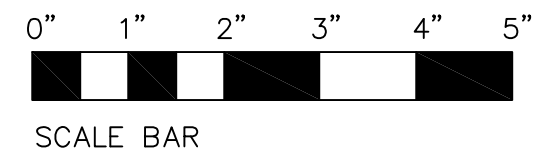
1
13 TYPICAL WALL SECTION - EXTERIOR



2
13 INTERIOR WALL SECTION



3
13 CONSTRUCTION JOINT DETAIL



United States Department of Agriculture
Forest Service

(R02)
ROCKY MOUNTAIN REGION

PROJECT NAME

**NORTH DELTA
STORAGE BUILDING**

**GRAND MESA,
UNCOMPAGRE AND
GUNNISON NATIONAL
FORESTS**

**SUPERVISOR'S OFFICE
NORTH DELTA SITE**

DRAWING TITLE

**STRUCTURAL
DETAILS**

DATE

XXXX-XX-XX

ARCHIVE NO.

XXX

DESIGNER

X.XXX

DRAWN

X.XXX

CHECKED

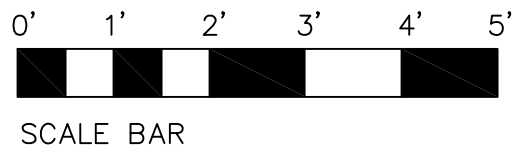
X.XXX

PROJECT NO.

DWG SHEET NO.

S-01

SHEET 13 OF 23



STANDING RIB
METAL ROOFING

TOP GIRT
PER MANUFACTURER

3'-0"

14'x14'
ROLLUP DOOR

BUILDING FRAME
COLUMN AT BENT
PER MANUFACTURER
(BEYOND)

HORIZONTAL GIRTS
OR FRAMING PER
MANUFACTURER
(BEYOND)

17'-6"

16'-0"

1
14

SECTION AT ROLLUP DOOR

SCALE 1"=2'

NOTE:
INSULATION NOT SHOWN FOR CLARITY

NATIVE/CDOT CLASS 4 AGG.
MATERIAL - 4% OUTSLOPE (TYP)

MATCH TO
EXISTING (TYP)

5'-0"

#4 @ 16" O.C.

6" CONC. SLAB

#4 @ 16" O.C. E.W.

ISOLATION JOINT

6" CONC. SLAB

SHEET DRAIN
(TYP)

4" PERFORATED
PVC PIPE TO
DRAINAGE
SUMP (TYP)

8"



United States Department of Agriculture
Forest Service

(R02)
ROCKY MOUNTAIN REGION

PROJECT NAME

**NORTH DELTA
STORAGE BUILDING**

**GRAND MESA,
UNCOMPAGRE AND
GUNNISON NATIONAL
FORESTS**

**SUPERVISOR'S OFFICE
NORTH DELTA SITE**

DRAWING TITLE

**STRUCTURAL
DETAILS**

DATE

XXXX-XX-XX

ARCHIVE NO.

XXX

DESIGNER

X.XXX

DRAWN

X.XXX

CHECKED

X.XXX

PROJECT NO.

DWG SHEET NO.

S-02

SHEET 14 OF 23

2019-6-24 09:14 DMATOS C:\USERS\DMATOS\G\M\J\IN DELTA\NEW BUILDING\DWG\13_TO_17_STRUCTURAL DETAILS.DWG;



United States Department of Agriculture
Forest Service

(R02)
ROCKY MOUNTAIN REGION

PROJECT NAME

**NORTH DELTA
STORAGE BUILDING**

**GRAND MESA,
UNCOMPAGRE AND
GUNNISON NATIONAL
FORESTS**

**SUPERVISOR'S OFFICE
NORTH DELTA SITE**

DRAWING TITLE

**FOUNDATION
DETAILS**

DATE

XXXX-XX-XX

ARCHIVE NO.

XXX

DESIGNER

X.XXX

DRAWN

X.XXX

CHECKED

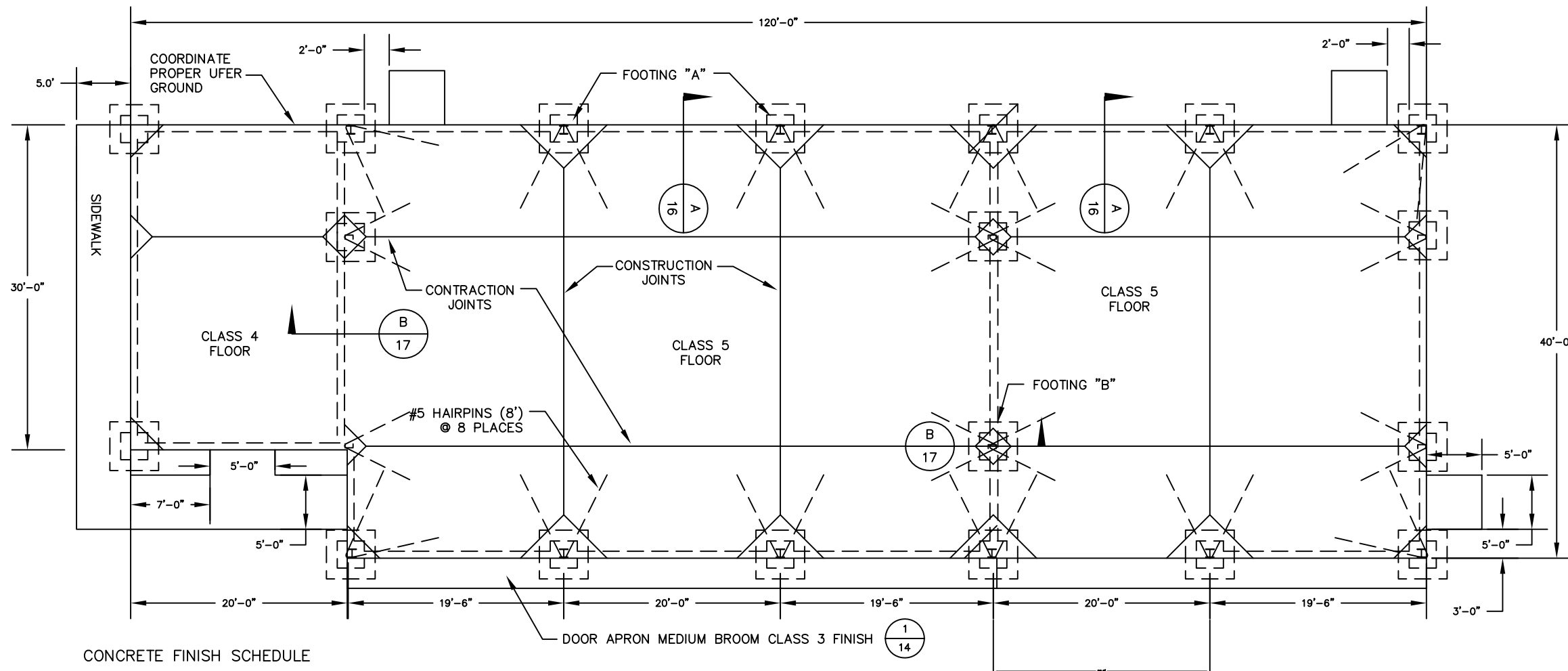
X.XXX

PROJECT NO.

DWG SHEET NO.

S-03

SHEET 15 OF 23

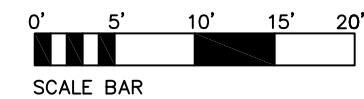


CONCRETE FINISH SCHEDULE

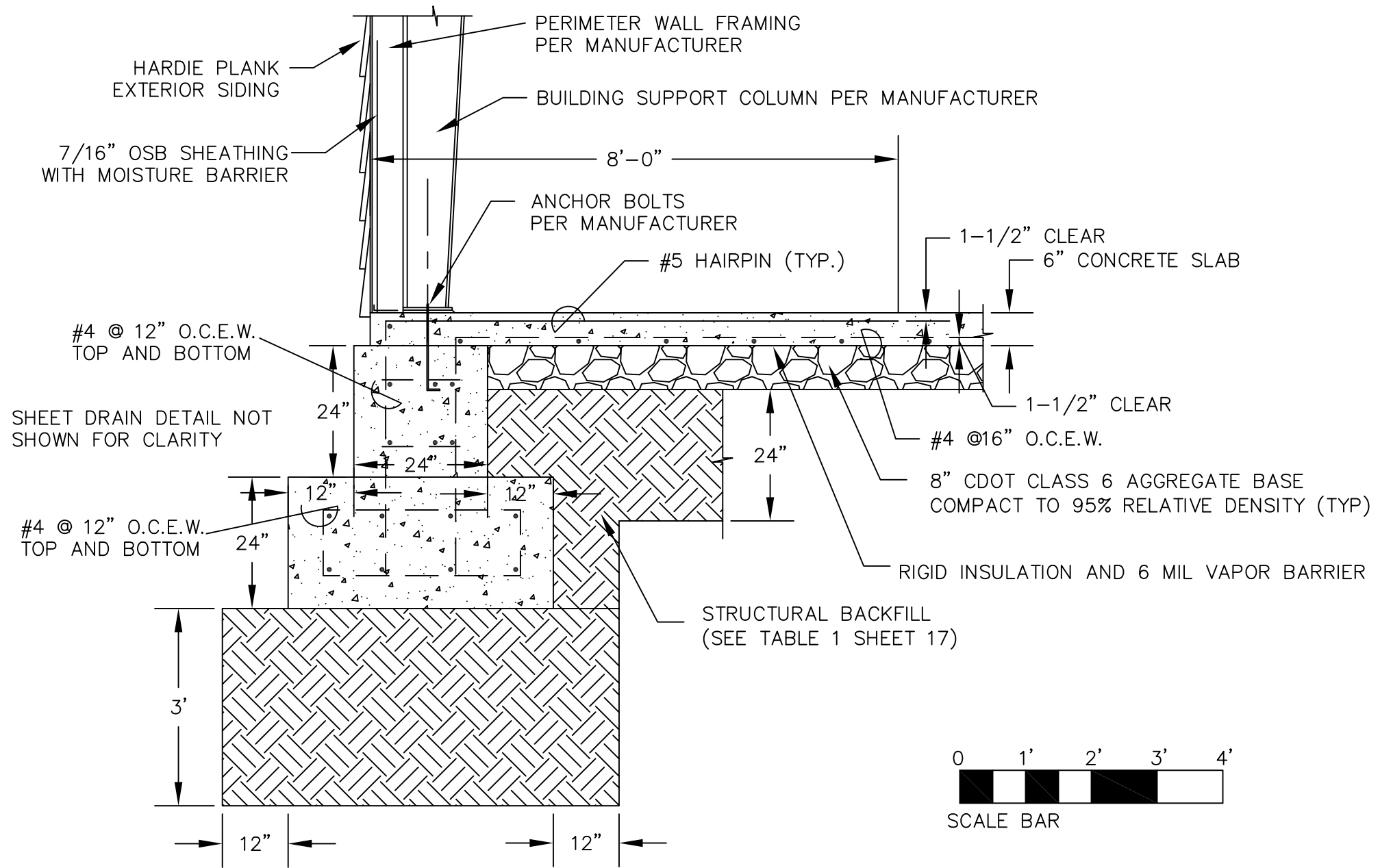
CLASS	FINISH	TOLERANCE
CLASS 4	NORMAL STEEL TROWEL	3/8"/10'
CLASS 5	HARD STEEL TROWEL	3/8"/10'

NOTE
SIDEWALK TO BE BUILT AS DOOR APRON.

1
15 FOUNDATION PLAN
SCALE 1/8"=1'-0"



2019-6-24 09:14 DMATOS C:\USERS\DMATOS\G\M\G\IN DELTA\NEW BUILDING\DWG\13_TO_17_STRUCTURAL DETAILS.DWG;



A
16
FOOTING A
SCALE 1"=2'



United States Department of Agriculture
Forest Service

(R02)
ROCKY MOUNTAIN REGION

PROJECT NAME

**NORTH DELTA
STORAGE BUILDING**

**GRAND MESA,
UNCOMPAGRE AND
GUNNISON NATIONAL
FORESTS**

SUPERVISOR'S OFFICE
NORTH DELTA SITE

DRAWING TITLE

**FOUNDATION
DETAILS**

DATE

XXXX-XX-XX

ARCHIVE NO.

XXX

DESIGNER

X.XXX

DRAWN

X.XXX

CHECKED

X.XXX

PROJECT NO.

DWG SHEET NO.

S-04

SHEET 16 OF 23

2019-6-24 09:14 DMATOS C:\USERS\DMATOS\G\M\G\IN DELTA\NEW BUILDING\DWG13_TO_17_STRUCTUREL DETAILS.DWG;

Table 1 – Structural Backfill Specifications

Graded Material Size	Percent Passing
2-inch sieve	100
#4 sieve	30 to 100
#50 sieve	10 to 60
#200 sieve	5 to 20
Maximum Liquid Limit of 35	
Maximum Plasticity Index of 6	



United States Department of Agriculture
Forest Service

(R02)
ROCKY MOUNTAIN REGION

PROJECT NAME

**NORTH DELTA
STORAGE BUILDING**

**GRAND MESA,
UNCOMPAGRE AND
GUNNISON NATIONAL
FORESTS**

SUPERVISOR'S OFFICE
NORTH DELTA SITE

DRAWING TITLE

**FOUNDATION
DETAILS**

DATE

XXXX-XX-XX

ARCHIVE NO.

XXX

DESIGNER

X.XXX

DRAWN

X.XXX

CHECKED

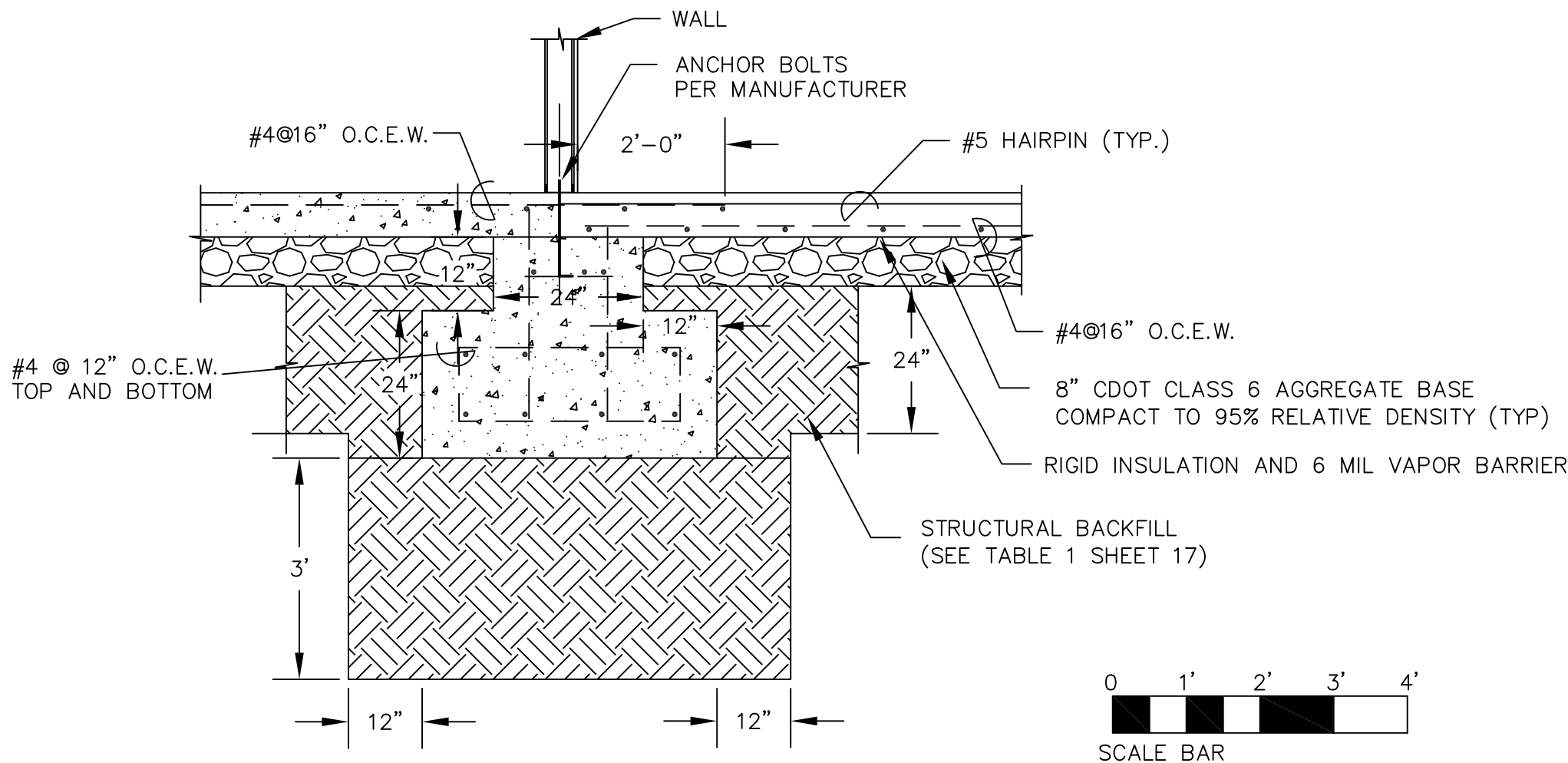
X.XXX

PROJECT NO.

DWG SHEET NO.

S-05

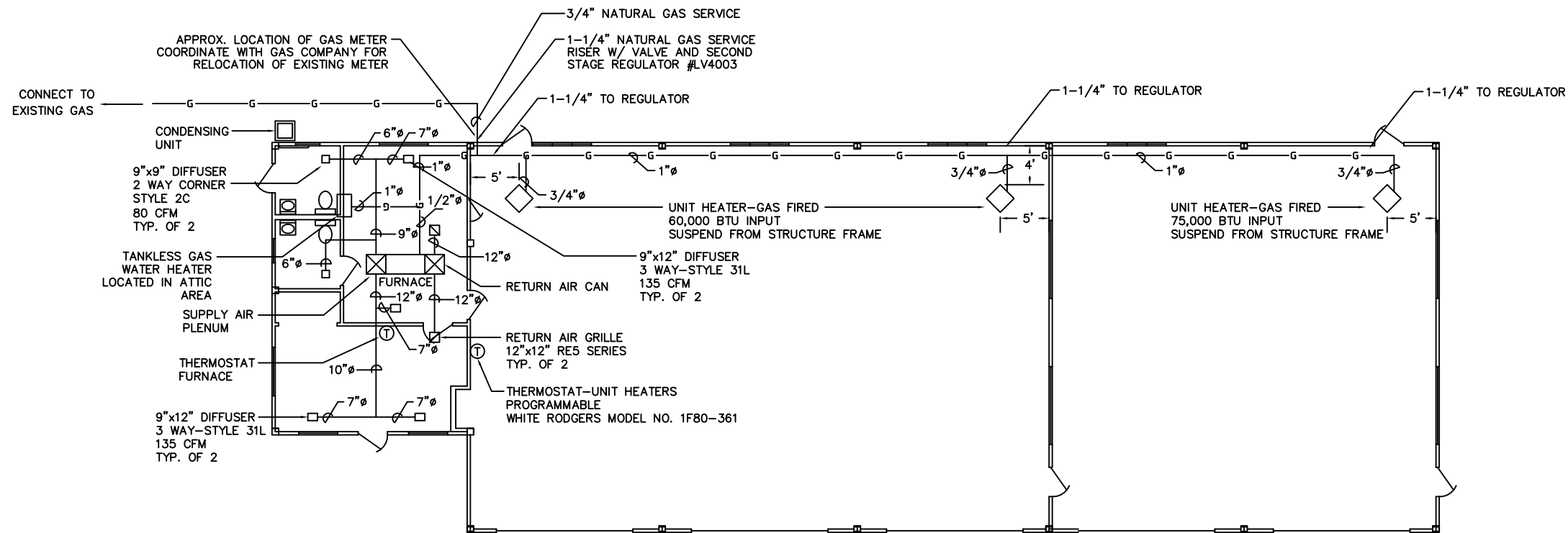
SHEET 17 OF 23



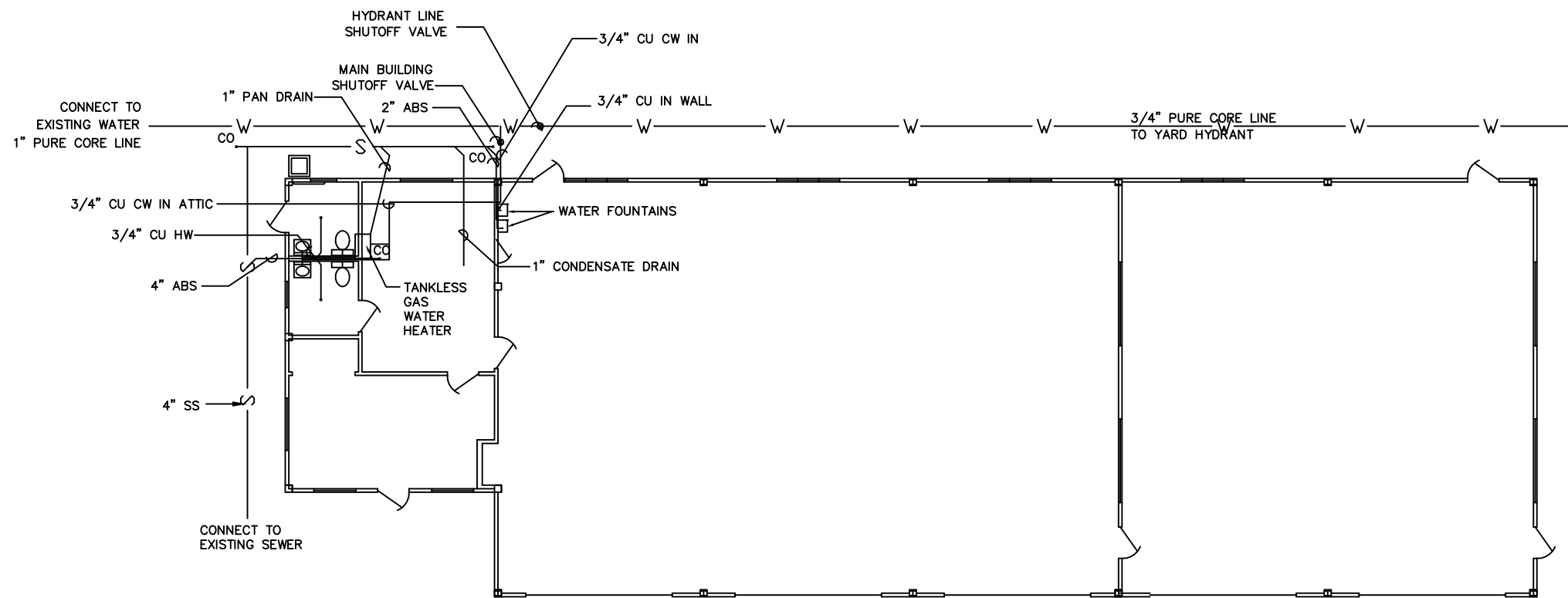
B
17

FOOTING B
SCALE 1"=2'

2019-6-24 09:25 DMATOS C:\USERS\DMATOS\G\MUGIN DELTA NEW BUILDING\DWG18_TO_20_MEP.DWG;



MECHANICAL PLAN



PLUMBING PLAN



United States Department of Agriculture
Forest Service

(R02)
ROCKY MOUNTAIN REGION

PROJECT NAME

**NORTH DELTA
STORAGE BUILDING**

**GRAND MESA,
UNCOMPAGRE AND
GUNNISON NATIONAL
FORESTS**

**SUPERVISOR'S OFFICE
NORTH DELTA SITE**

DRAWING TITLE

**MECHANICAL AND
PLUMBING PLAN**

DATE

XXXX-XX-XX

ARCHIVE NO.

XXX

DESIGNER

X.XXX

DRAWN

X.XXX

CHECKED

X.XXX

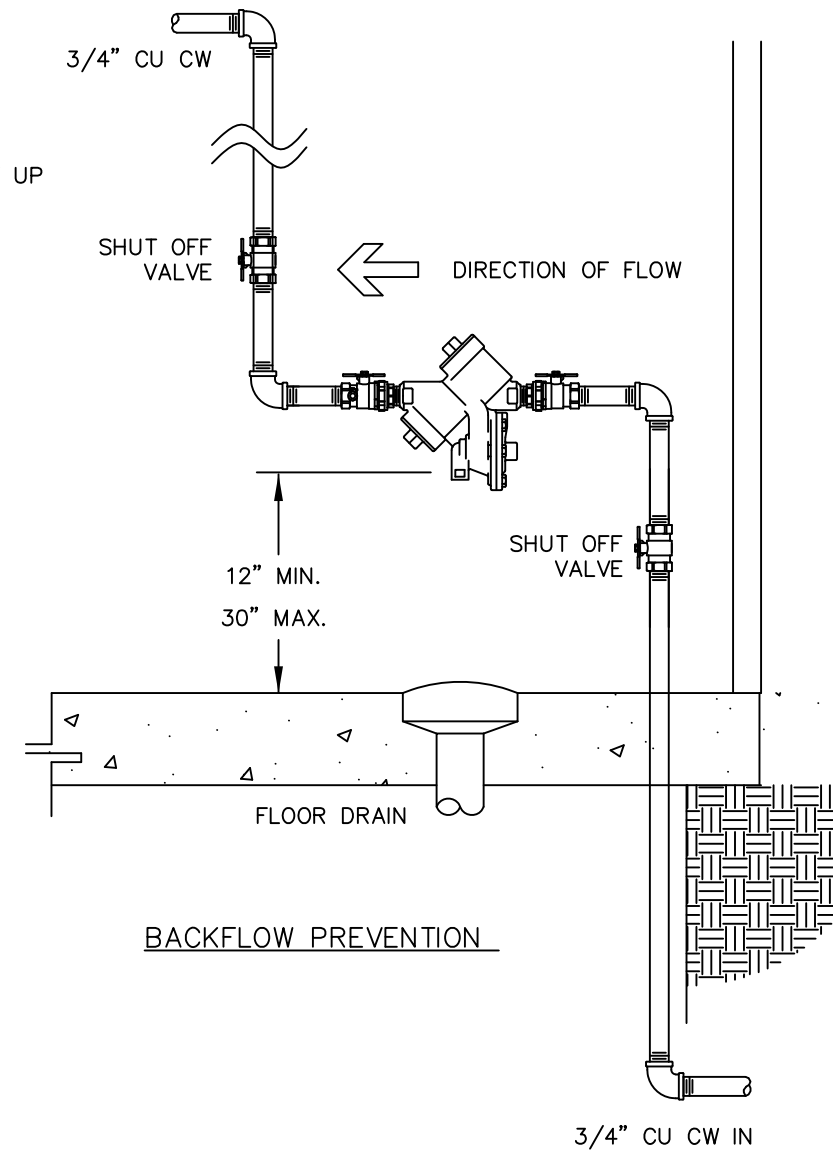
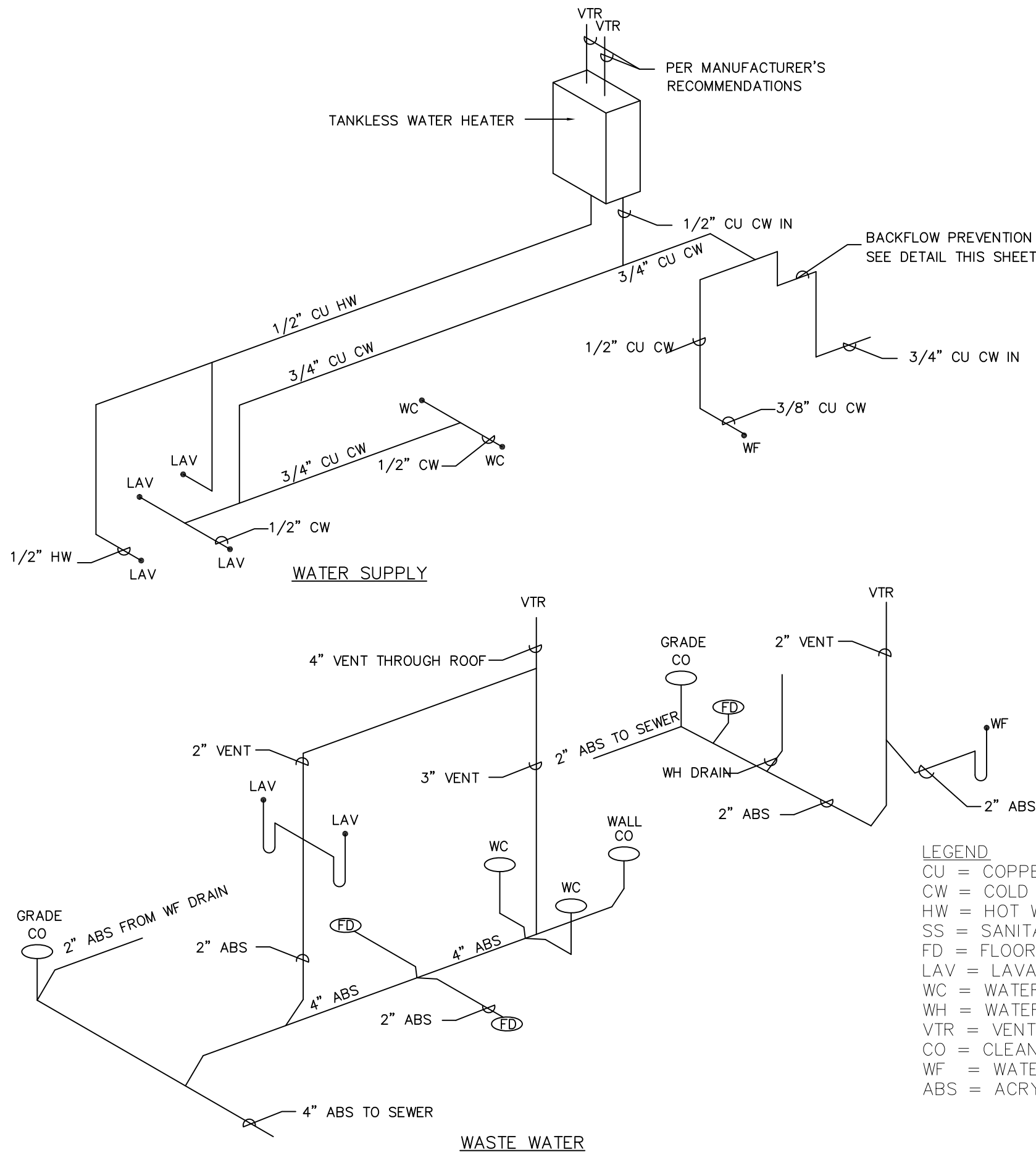
PROJECT NO.

DWG SHEET NO.

MEP-01

SHEET 18 OF 23

2019-6-24 09:25 DMATOS C:\USERS\DMATOS\G\M\G\IN DELTA\NEW BUILDING\DWG18_TO_20_MEP.DWG;



- LEGEND**
- CU = COPPER WATER LINE
 - CW = COLD WATER
 - HW = HOT WATER
 - SS = SANITARY SEWER
 - FD = FLOOR DRAIN
 - LAV = LAVATORY
 - WC = WATER CLOSET
 - WH = WATER HEATER
 - VTR = VENT THROUGH ROOF
 - CO = CLEAN OUT
 - WF = WATER FOUNTAIN
 - ABS = ACRYLONITRILE-BUTADIENE-STYRENE SANITARY SEWER LINE

NOT TO SCALE



United States Department of Agriculture
Forest Service

(R02)
ROCKY MOUNTAIN REGION

PROJECT NAME
**NORTH DELTA
STORAGE BUILDING**

**GRAND MESA,
UNCOMPAGRE AND
GUNNISON NATIONAL
FORESTS**

SUPERVISOR'S OFFICE
NORTH DELTA SITE

DRAWING TITLE
**MECHANICAL AND
PLUMBING PLAN**

DATE
XXXX-XX-XX

ARCHIVE NO.
XXX

DESIGNER
X.XXX

DRAWN
X.XXX

CHECKED
X.XXX

PROJECT NO.

DWG SHEET NO.
MEP-02

SHEET 19 OF 23

NOTES:

1. CONTRACTOR SHALL PROVIDE ALL EQUIPMENTS, MATERIALS AND WORKMANSHIP NECESSARY TO COMPLETE THE WORK.
2. DIFFUSERS: HART & COOLEY. MODELS ARE ALUMINUM CONSTRUCTION, W/ REMOVABLE CORE, FLAT MARGIN STYLE, SANT IN ANODIZED FINISH OR APPROVED EQUAL.
3. RETURN AIR GRILLES: HART & COOLEY RE5 SERIES OR APPROVED EQUAL.
4. DUCT WORK: ALL DUCT WORK SHALL BE FLEXIBLE DUCT, CLASS 1, METALIZED JACKET, HART & COOLEY F-294-R-4.2 OR APPROVED EQUAL. CONTRACTOR SHALL BE CAREFUL TO NOT KINK OR COLLAPSE FLEXIBLE DUCT.
5. BALANCING DAMPERS: BUTTERFLY SHALL BE MANUFACTURED PRODUCT W/ LOCKING REGULATORS FOR FLEXIBLE DUCT WORK.
6. ALL RECTANGULAR PLENUMS AND AIR CANS SHALL BE LINED WITH 1" THICK DUCTLINER. DUCTLINER SHALL HAVE FACTORY APPLIED ANTIMICROBIAL COATING ON THE SURFACES AND EDGES. (MANVILLE PERMACOTE LINACOUSTIC)
7. UNIT HEATERS: GAS (3 UNITS), DAYTON MODEL NO. 2RYV4 W/ ELECTRONIC PROGRAMMABLE THERMOSTAT, WHITE RODGERS MODEL NO. 1F80-361 OR APPROVED EQUAL.
8. FURNACE: RHEEM MODEL R92PA0601317MSA, MULTI-POSITION, 56,000 BTUH INPUT, 92% A.F.U.E. LP GAS FIRED OR APPROVED EQUAL.
9. EVAPORATOR COIL: LENNOX CH23-21 W/ COPPER TUBING, ALUMINUM FINS, STEEL CABINET OR APPROVED EQUAL.
10. CONDENSING UNIT: RHEEM MODEL RA1424WJ1NA, 2 TON 14 SEER, 13 EER OR APPROVED EQUAL.
11. THERMOSTAT: ELECTRONIC PROGRAMMABLE, SUPPLIED BY HVAC MANUFACTURER, EMERSON MODEL 1F78-144 OR APPROVED EQUAL.
12. VENT AND DRAINAGE PIPE SHALL BE ABS. MINIMUM VENT AND DRAIN PIPE SHALL BE 1 1/2 INCH.
13. VENTS FROM LAV'S AND WC'S SHALL BE CONNECTED TO A VENT SYSTEM IN THE WALL WITH ONE 4 INCH VENT THROUGH ROOF.
14. WATER FOUNTAINS SHALL BE ELKAY ENHANCED EZH2O BOTTLE FILLING STATION, & VERSATILE BI-LEVEL ADA COOLER, FILTERED 8 GPH LIGHT GRAY OR APPROVED EQUAL. FOLLOW MANUFACTURE'S RECOMMENDATIONS FOR WATER SUPPLY AND WASTE OUTLET LINES SIZE AND LOCATIONS; AND ELECTRICAL SUPPLY RECEPTACLES LOCATIONS.
15. WATER HEATER SHALL BE RINNAI V65iN INDOR TANKLESS WATER HEATER (0.80 UEF; 10,300 BTU/H MINIMUM; 6.5 MAX GPM; CONNECTED TO NATURAL GAS) OR APPROVED EQUAL. FOLLOW MANUFACTURER'S RECOMMENDATIONS FOR PROPER INSTALLATION OF EQUIPMENT AND NEEDED PARTS (PIPING, VALVES, DRAINS, ETC.).
16. BACKFLOW PREVENTION DEVICE SHALL BE ZURN MODEL 975XL2TCU WITH TEST COCKS FACING UPWARD TO ALLOW INSTALLATION CLOSE TO WALL AND BATTERY OPERATED MONITOR SWITCH OR APPROVED EQUAL.
17. FLOOR DRAIN SHALL BE ZURN MODEL Z460B OR APPROVED EQUAL.
18. ALL BUILDING WATER PIPING SHALL BE COPPER.
19. CONTRACTOR SHALL FOLLOW MANUFACTURERS RECOMMENDATIONS FOR STORE AND INSTALLATIONS OF EQUIPMENTS.



United States Department of Agriculture
Forest Service

(R02)
ROCKY MOUNTAIN REGION

PROJECT NAME

**NORTH DELTA
STORAGE BUILDING**

**GRAND MESA,
UNCOMPAGRE AND
GUNNISON NATIONAL
FORESTS**

**SUPERVISOR'S OFFICE
NORTH DELTA SITE**

DRAWING TITLE

**MECHANICAL AND
PLUMBING NOTES**

DATE

XXXX-XX-XX

ARCHIVE NO.

XXX

DESIGNER

X.XXX

DRAWN

X.XXX

CHECKED

X.XXX

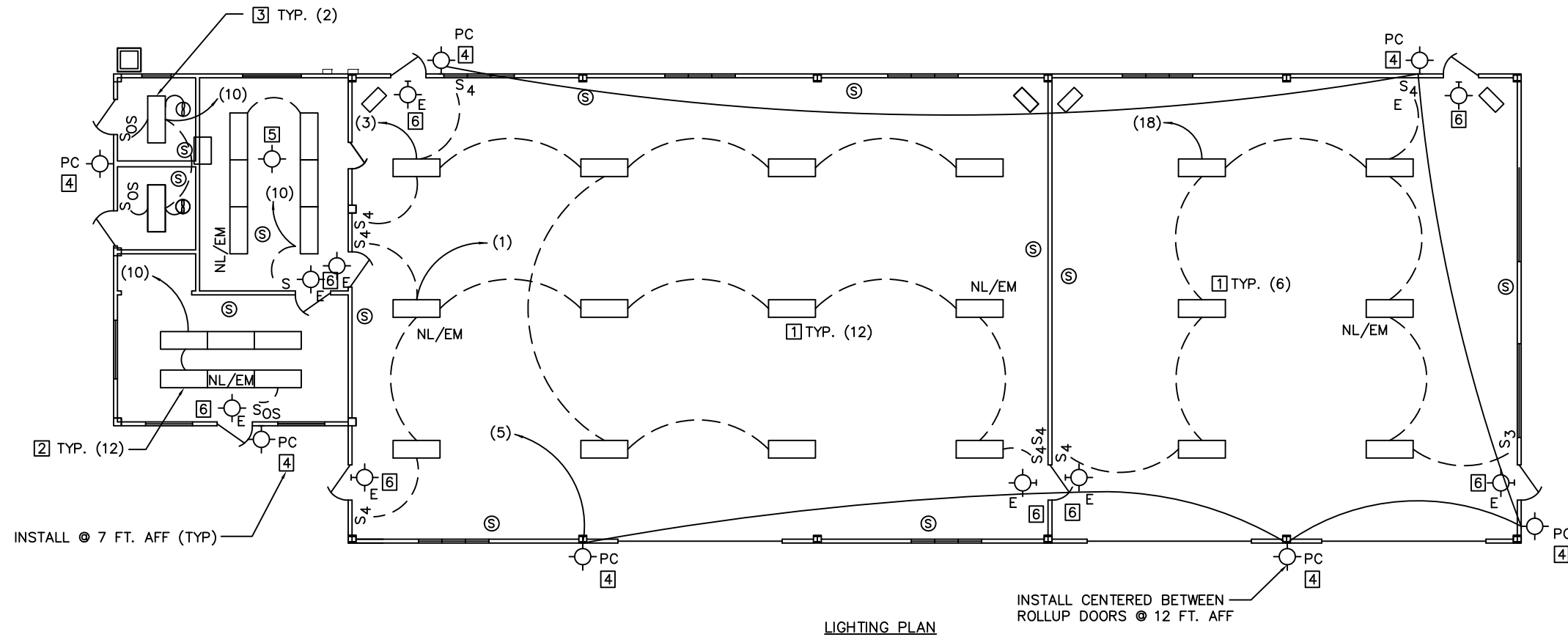
PROJECT NO.

DWG SHEET NO.

MEP-03

SHEET 20 OF 23

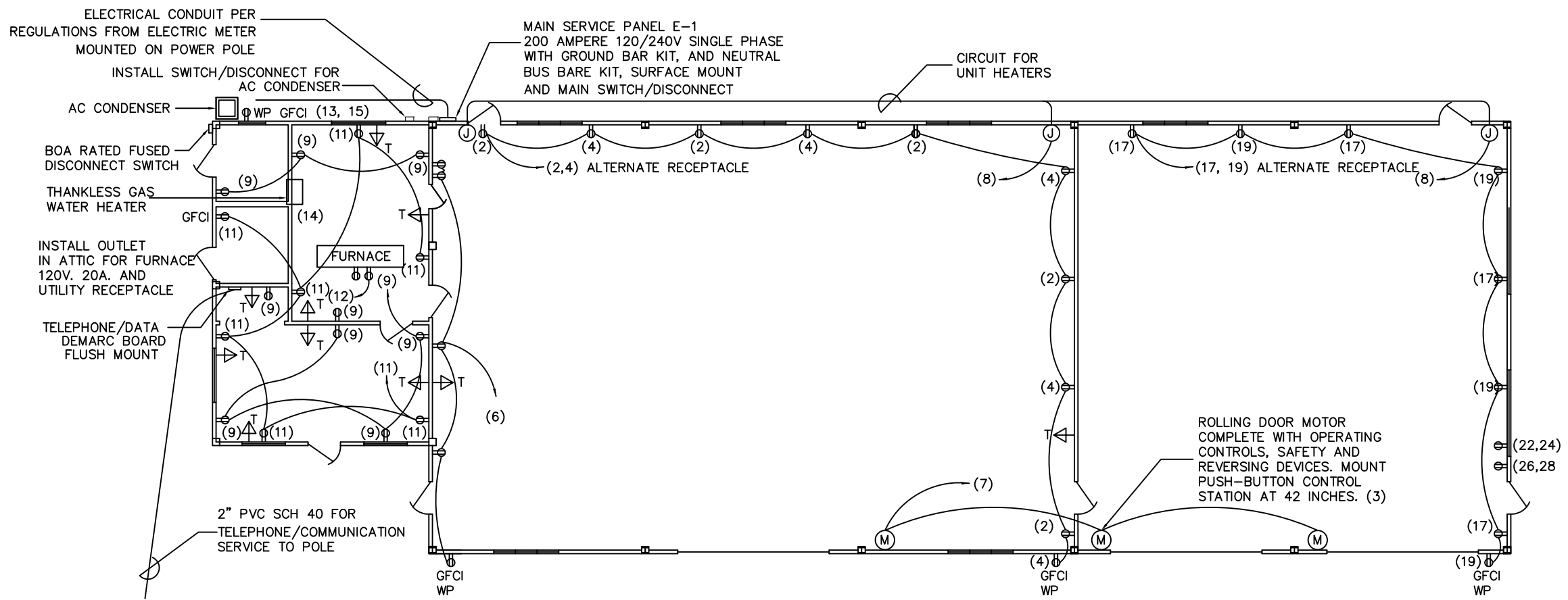
2019-6-24 09:17 DMATOS C:\USERS\DMATOS\GWIN DELTA NEW BUILDING\DWG21_TO_23_MEP.DWG



LIGHTING PLAN

INSTALL CENTERED BETWEEN ROLLUP DOORS @ 12 FT. AFF

INSTALL @ 7 FT. AFF (TYP)



POWER DISTRIBUTION PLAN



United States Department of Agriculture
Forest Service

(R02)
ROCKY MOUNTAIN REGION

PROJECT NAME

**NORTH DELTA
STORAGE BUILDING**

**GRAND MESA,
UNCOMPAGRE AND
GUNNISON NATIONAL
FORESTS**

**SUPERVISOR'S OFFICE
NORTH DELTA SITE**

DRAWING TITLE

ELECTRICAL PLAN

DATE

XXXX-XX-XX

ARCHIVE NO.

XXX

DESIGNER

X.XXX

DWG SHEET NO.

MEP-4

DRAWN

X.XXX

CHECKED

X.XXX

PROJECT NO.

SHEET 21 OF 23

2019-6-24 09:17 DMATOS C:\USERS\DMATOS\GUGIN DELTA\NEW BUILDING\DWG\21_TO_23_MEP.DWG;

NOTES

1. ALL ELECTRICAL WORK SHALL CONFORM TO THE NEC.
2. THE LAYOUT OF FIXTURES, OUTLETS & EQUIPMENT IS GENERALLY DIAGRAMMATIC UNLESS SPECIFICALLY DIMENSIONED. THE LAYOUT SHALL BE COORDINATED & CHECKED WITH THE BUILDING STRUCTURAL & FINISHED DETAILS, MECHANICAL & PLUMBING SYSTEMS FOR INTERFERENCES. ANY DISCREPANCY FOUND SHALL BE BROUGHT TO THE ATTENTION OF THE CO FOR RESOLUTION, PRIOR TO INSTALLATION.
3. ALL WORK INVOLVING CONNECTIONS TO SERVING UTILITY COMPANIES SHALL MEET THE REQUIREMENTS OF THAT UTILITY IN ADDITION TO THOSE REQUIREMENTS SPECIFIED & INDICATED IN THESE PLANS & SPECS.
4. CONTRACTOR SHALL PROVIDE ALL EQUIPMENTS, MATERIALS AND WORKMANSHIP NECESSARY TO COMPLETE THE WORK.
5. FIRE WALL PENETRATION & OPENINGS IN FIRE RATED WALLS SHALL BE SEALED BY AN APPROVED METHOD LISTED IN THE UL FIRE RESISTIVE DIRECTORY. PENETRATIONS THROUGH FIRE RATED WALLS SHALL BE SEALED WITH SCOTCH CP25 FIRE CAULK, 303 PUTTY OR APPROVED EQUAL.
6. ALL WIRING IN THE BAY 1 & 2 SHALL BE IN ELECTRICAL METALLIC TUBING (EMT) ON THE SURFACE WITH STEEL BOXES, 4" SQUARE BY 2 1/8" DEEP & 1/2" RAISED STEEL COVERS FOR THE DEVICES AND BLANK COVERS FOR JUNCTION BOXES. MINIMUM SIZE EMT SHALL BE 3/4".
7. RECEPTACLES & SWITCHES IN BAY 1 & 2 SHALL BE LOCATED AT 42" ABOVE FINISHED FLOOR.
8. ALL RACEWAYS & CABLES SHALL CONTAIN AN EQUIPMENT GROUNDING CONDUCTOR. IF NO CONDUCTOR SIZE IS INDICATED ON THE DRAWINGS, THE CONDUCTOR SHALL BE SIZED IN ACCORDANCE W/ THE NEC 250-122.
9. ALL METAL BOXES SHALL BE GROUNDED BY BONDING THE CIRCUIT EQUIPMENT GROUNDING CONDUCTOR TO THE BOX WITH THE BOX GROUNDING SCREW. RECEPTACLES SHALL BE GROUNDED BY USE OF A PIGTAIL FROM THE CIRCUIT GROUNDING CONDUCTOR TO THE RECEPTACLE GROUNDING SCREW. REMOVAL OF THE RECEPTACLE SHALL NOT INTERRUPT THE CIRCUIT GROUNDING SYSTEM.
10. OFFICE & CONFERENCE ROOM: WIRING SHALL BE IN EMT OR WHEN CONCEALED WITHIN THE BUILDING MAY BE METAL-CLAD CABLE, TYPE MC. WHEN TYPE MC CABLE IS USED, APPROVED PLASTIC BOXES MAY BE UTILIZED.
11. OFFICE & CONFERENCE ROOM: SWITCHES & GFCI RECEPTACLES SHALL BE LOCATED 42" ABOVE FINISHED FLOOR. RECEPTACLES & TELEPHONE/DATA OUTLETS & SIMILAR DEVICES SHALL BE LOCATED 15" ABOVE FINISHED FLOOR TO CENTER OF THE BOX, UNLESS OTHERWISE NOTED. INTERIOR COVER PLATES FOR FLUSH MOUNTED SWITCHES, RECEPTACLES, TELEPHONE/DATA OUTLETS SHALL BE SMOOTH SURFACE THERMOPLASTIC.
12. CONTRACTOR SHALL INSTALL A DEDICATED CIRCUIT (240V) INSIDE BAY 2, NEXT TO EXTERIOR DOOR, FOR AN AIR COMPRESSOR. FINAL LOCATION TO BE APPROVE BY CONTRACTING OFFICER.
13. CONTRACTOR SHALL INSTALL A 40 AMP DEDICATED 240V CIRCUIT INSIDE BAY 2, NEXT TO EXTERIOR DOOR, FOR AN ARC WELDER, FINAL LOCATION TO BE APPROVED BY CONTRACTING OFFICER.

NOTES (LIGHTING PLAN)

1. MOUNT LIGHT SWITCHES 42" ABOVE FINISHED FLOOR.
2. CONNECT EXHAUST FAN TO RESTROOM LIGHT SWITCH.

NOTES (GENERAL)

1. SEE SHEET MEP-5 FOR LIGHT FIXTURE SCHEDULE, PANEL SCHEDULE, ONE-LINE SCHEMATIC AND FURTHER GENERAL NOTES.

NOTES (POWER DISTRIBUTION PLAN)

1. ALL OUTLETS IN BAY 1 & 2 SHALL BE GFCI MOUNTED 42" ABOVE FINISHED FLOOR UNLESS OTHERWISE NOTED.
2. PROVIDE GFCI RECEPTACLES AT 42" ABOVE FLOOR ADJACENT TO LAVATORY IN EACH RESTROOM.
3. EXTERIOR GFCI RECEPTACLES SHALL BE LOCATED 36" ABOVE GRADE INSTALLED IN A RED DOT 1-GANG GFCI WEATHER PROOF NON- METALLIC BOX AND COVER (OR APPROVED EQUAL).
4. UNIT HEATERS IN ENGINE BAYS - PROVIDE FUSED SWITCH MOUNTED ADJACENT TO UNIT HEATER, BUSS #SSY FUSETRON COVER ON 4" SQUARE BOX. FUSE AND CONNECTION TO UNIT HEATERS BY DIV. 26
5. CONDENSING UNIT DISCONNECT - 30 AMPS, 2 POLE FUSIBLE NEMA 3R WITH 30 AMPS "FRN" FUSES. SURFACE MOUNT ADJACENT TO CONDENSING UNIT 36" ABOVE GRADE. SURFACE MOUNT 3/4" RIGID STEEL CONDUIT TO UNIT WITH FINAL 12" - 18" IN LIQUIDITE FLEX W/ 2 - # 10 CONDUCTORS AND 1 - # 10 GROUND FUSES AND LOAD SIDE WIRING BY DIVISION 26.
6. ROLLING DOOR MOTOR OPERATORS - INSTALL A 4" JUNCTION BOX. FINAL CONNECTION TO UNIT FLEX CONDUIT WITH 2 - # 12 CONDUCTORS AND 1 - # 12 GROUND. MOUNT DOOR OPERATORS AT 42" ABOVE FLOOR.
7. RESTROOM EXHAUST FANS SHALL BE NUTONE ULTRA-QUIET TEST MODEL QT100L.

NOTES (TELECOMMUNICATION):

1. CONTRACTOR SHALL INSTALL NEW TELECOMMUNICATIONS LINE FROM EXISTING SERVICE TO NEW BUILDING.
2. CONTRACTOR SHALL PROVIDE A DEMARC BOARD 4' X 4'.
3. CONTRACTOR SHALL INSTALL CABLING AND OUTLETS FOR TELECOMMUNICATION WITH VOICE AND DATA JACKS FROM DEMARC BOARD TO OUTLETS.
4. DATA LINES SHALL BE CAT 6.
5. FINAL LOCATION OF VOICE AND DATA JACKS SHALL BE APPROVED BY CONTRACTING OFFICER.
6. MAIN TELEPHONE/DATA PANEL SHALL BE SET UP IN THE OFFICE AREA. PROVIDE DEMARC BOARD AND DEDICATED ELECTRICAL.
7. TELEPHONE/DATA OUTLETS SHALL HAVE A 3/4" PVC CONDUIT FROM TOP OF MOUNTING PLATE TO DESIGNATED COMMUNICATION AREA IN OFFICE AREA..
8. TELEPHONE OUTLETS IN GARAGE SHALL BE 54" ABOVE FLOOR.



United States Department of Agriculture
Forest Service

(R02)
ROCKY MOUNTAIN REGION

PROJECT NAME

**NORTH DELTA
STORAGE BUILDING**

**GRAND MESA,
UNCOMPAGRE AND
GUNNISON NATIONAL
FORESTS**

**SUPERVISOR'S OFFICE
NORTH DELTA SITE**

DRAWING TITLE

**ELECTRICAL PLAN
NOTES**

DATE

XXXX-XX-XX

ARCHIVE NO.

XXX

DESIGNER

X.XXX

DRAWN

X.XXX

CHECKED

X.XXX

PROJECT NO.

DWG SHEET NO.

MEP-05

SHEET **22** OF **23**

2019-6-24 09:17 DMATOS C:\USERS\DMATOS\G\M\IN DELTA\NEW BUILDING\DWG21_TO_23_MEP.DWG;

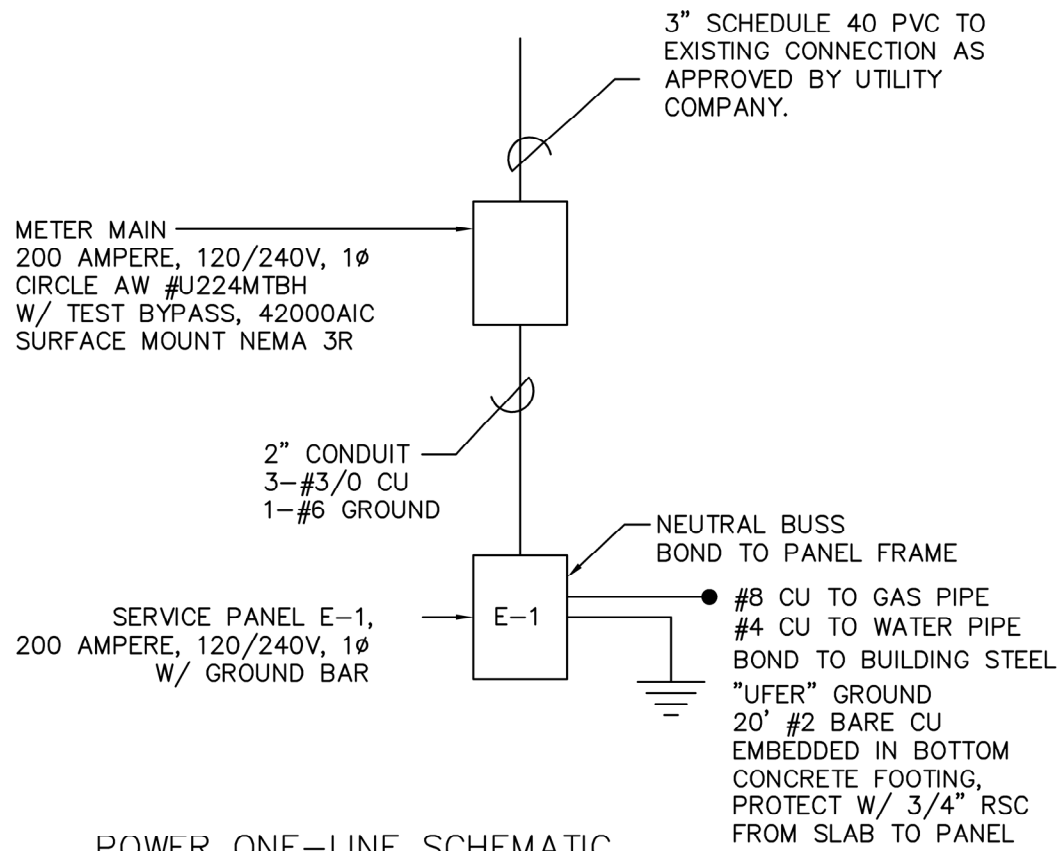
LIGHT FIXTURE SCHEDULE

NO.	MANUFACTURER/ CATALOG NO.	VOLTS	LAMP TYPE	MOUNT	REMARKS
1	LITHONIA ZL1N L48	120	LED 40K	PENDANT	CHAIN HUNG @ 15 FT. ADDITIONAL PARTS NEEDED. 3,000LM. 25W.
2 3	LITHONIA ZL1N L48	120	LED 40K	SURFACE	3,000LM. 25W.
4	VISIONAIRE VSC-T3-48-700- 4K-UNV-WM-BK- PC277	120	LED DRIVER 48W LED 40K, 10843LM	WALL	WALL MOUNTED AREA LIGHT CAST ALUMINUM HOUSING, IP65 RATED, DLC LISTED INTEGRAL PHOTOCELL, -50°C OPERATING RATING
5	PHILLIPS DAY-BRITE SVT5	120	14WT5 (22")	CEILING	MODEL SV-2-S-2-24-120-1/2EB ATTIC LIGHTING, SWITCH ADJUST TO ACCESS DOOR
6	DAY-BRITE CXXL3RW	120		WALL	EXIT SIGN.

NOTE: CONTRACTOR SHALL SUBMIT EQUAL PRODUCTS FOR APPROVAL BEFORE ORDERING MATERIAL.

LEGEND

⊖	DUPLEX RECEPTACLE 15A, 125V, BACK WIRED, IVORY, LEVITON #BR15-1
⊖ GFCI	GFCI DUPLEX RECEPTACLE 15A, 125V, BACK WIRED, IVORY, LEVITON #6500-1
WP	WEATHER PROOF ENCLOSURE RED DOT 1-GANG GFCI WEATHER PROOF NON-METALLIC BOX AND COVER (OR APPROVED EQUAL)
⊖ T	TELEPHONE/DATA OUTLET, CADDY #MP1S, UNLESS OTHERWISE NOTED
⊖ J	JUNCTION BOX, 4" SQUARE X 2 1/8" DEEP
⊖ M	ROLLING DOOR OPERATOR
S	SPST 15A, 125V, SWITCH, BACKED WIRED, IVORY, LEVITON #CSB1-15I
S _{OS}	OCCUPANCY SENSOR 15A, 125V, SWITCH, BACKED WIRED, IVORY, LEVITON #ODS06-IDW
S ₃	3-WAY 15A, 125V, SWITCH, BACKED WIRED, IVORY, LEVITON #CSB3-15I
PC	PHOTO CONTROL, FIXTURE MOUNTED SUPPLIED BY FIXTURE MANUFACTURER
⊖	CEILING MOUNTED FIXTURE
⊖	WALL MOUNTED FIXTURE
⊖ E ⊖ E	EMERGENCY EXIT LIGHTS
6	FIXTURE NUMBER, SEE FIXTURE SCHEDULE
⊖	BATHROOM EXHAUST FAN
NL/EM	NIGHT/EMERGENCY LIGHT - DO NOT SWITCH
⊖ S	SMOKE DETECTOR WITH STROBE LIGHT MODEL PC4WL



POWER ONE-LINE SCHEMATIC

PANEL E-1 SCHEDULE 200 AMPERE, 120/240V, 1φ

LOAD NAME	C.B.	CIR. NO.		CIR. NO.	C.B.	LOAD NAME
LIGHTS-BAY 1	20/1	1	•	2	20/1	RECEPTACLES BAY 1
LIGHTS-BAY 1	20/1	3	•	4	20/1	RECEPTACLES BAY 1
EXTERIOR LIGHTS	20/1	5	•	6	20/1	RECEPTACLES BAY 1
BAY 1 & 2 DOOR OPENERS	20/1	7	•	8	20/1	UNIT HEATERS
RECEPTACLES OFFICE	20/1	9	•	10	20/1	LIGHTS OFFICE AND BATHROOMS
RECEPTACLES OFFICE	20/1	11	•	12	20/1	FURNACE
AC CONDENSER	30	13	•	14	20/1	WATER HEATER
AC CONDENSER	2	15	•	16		SPARE
RECEPTACLES BAY 2	20/1	17	•	18	20/1	LIGHTS-BAY 2
RECEPTACLES BAY 2	20/1	19	•	20		SPARE
SPARE		21	•	22	40	WELDER
SPARE		23	•	24	40/2	WELDER
SPARE		25	•	26	40	AIR COMPRESSOR
SPARE		27	•	28	40/2	AIR COMPRESSOR
SPARE		29	•	30		SPARE



United States Department of Agriculture
Forest Service

(R02)
ROCKY MOUNTAIN REGION

PROJECT NAME

**NORTH DELTA
STORAGE BUILDING**

**GRAND MESA,
UNCOMPAGRE AND
GUNNISON NATIONAL
FORESTS**

SUPERVISOR'S OFFICE
NORTH DELTA SITE

DRAWING TITLE

**ELECTRICAL
DETAILS**

DATE

XXXX-XX-XX

ARCHIVE NO.

XXX

DESIGNER

X.XXX

DRAWN

X.XXX

CHECKED

X.XXX

PROJECT NO.

DWG SHEET NO.

MEP-06

SHEET 23 OF 23