

CALLISONRTKL
CallisonRTKL, Inc.
1400 Pike Ave
Seattle, WA 98101
006-132864-81

REI-GLENWOOD SPRINGS
3216 S. GLEN AVENUE
GLENWOOD SPRINGS,
CO, 81601

SHEET NOTES

1. CENTER ALL CEILING GRIDS AND LIGHTS WITHIN ROOMS (TYP.) UN.
2. ALL HVAC EQUIPMENT SHOWN FOR COORDINATION PURPOSES ONLY - SEE MEP DRAWINGS FOR EQUIPMENT SPECIFICATIONS.
3. REFER TO ELEC DRAWINGS FOR ALL MOUNTING HEIGHTS OF LIGHT FIXTURES.
4. SEE A-107 FOR LIGHT FIXTURE SUPPORT DETAILS AT CEILING GRID.
5. LOCATE DUCTWORK AS HIGH AS POSSIBLE (SEE MECH). BOTTOM OF DUCTWORK SHOULD ALWAYS BE HIGHER THAN BOTTOM OF LIGHTS. VERIFY WITH ELEC. NOTIFY ARCHITECT IF OBSTRUCTIONS OCCUR.
6. IN ROOMS WITH ACP CEILING, PROVIDE CAULK BETWEEN PERIMETER CEILING GRID AND WALL.
7. ONLY USE UNFINISHED GALVANIZED HVAC DUCT WORK. ONLY USE FACTORY FINISHED FIRE SUPPRESSION EQUIPMENT INSIDE THE SPACE.
8. ONLY USE PRE-GALVANIZED UNISTRUT FINISH (PG) FOR HANGING TRACK, TYP.
9. LOCATE AND CONFIRM DIMENSIONS AT BIKE AND BOAT LIFTS WITH REI PRIOR TO SHIPMENT OF ITEMS.

SHEET LEGEND

- DISPLAY FIXTURES BELOW (FOO)
- LIGHTING TRACK
- TRAFFIC AISLE BELOW
- ⊠ SUPPLY
- ⊠ RETURN
- ⊠ HVAC DROP
- NEW DUCTWORK SHOWN POCHED FOR CLARITY
- ⊠ EXIT SIGNAGE
- ⊠ ACP CEILING
- PAINTED GYP CEILING

LIGHT FIXTURES

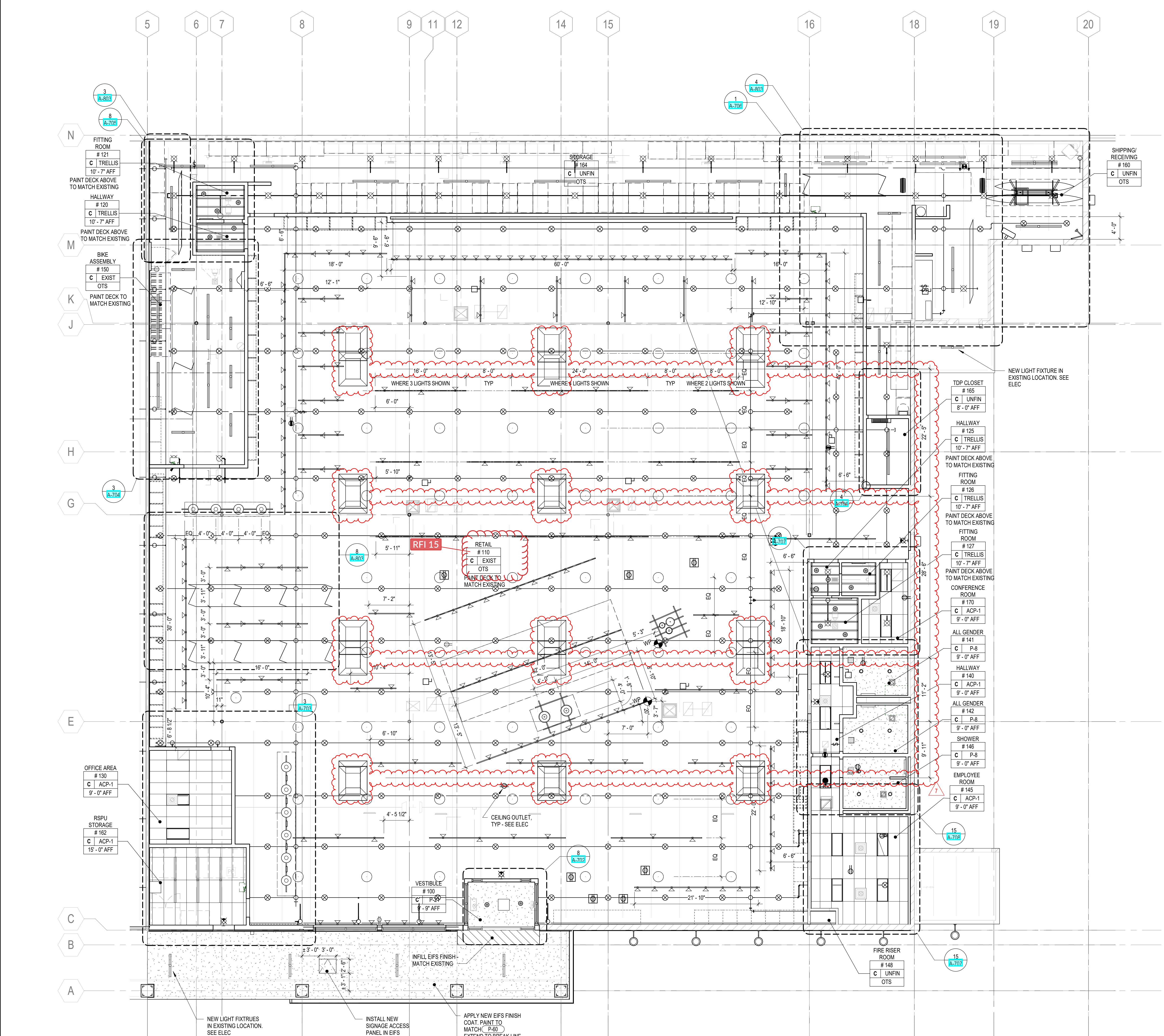
- ⊠ SURFACE MOUNTED, SEE ELEC
- ⊠ TRACK MOUNTED, SEE ELEC
- ⊠ SUSPENDED, SEE ELEC
- ⊠ WALL MOUNTED, SEE ELEC

SHIPPING RESOURCE LOG

REV	DATE	DESCRIPTION
1	11/05/21	PERMIT SET
2	12/20/21	BULLETN 2
3	01/14/22	BULLETN 3
4	02/11/22	CONSTRUCTION SET
7	03/18/22	BULLETN 7

SCALE: 1/8" = 1'-0"

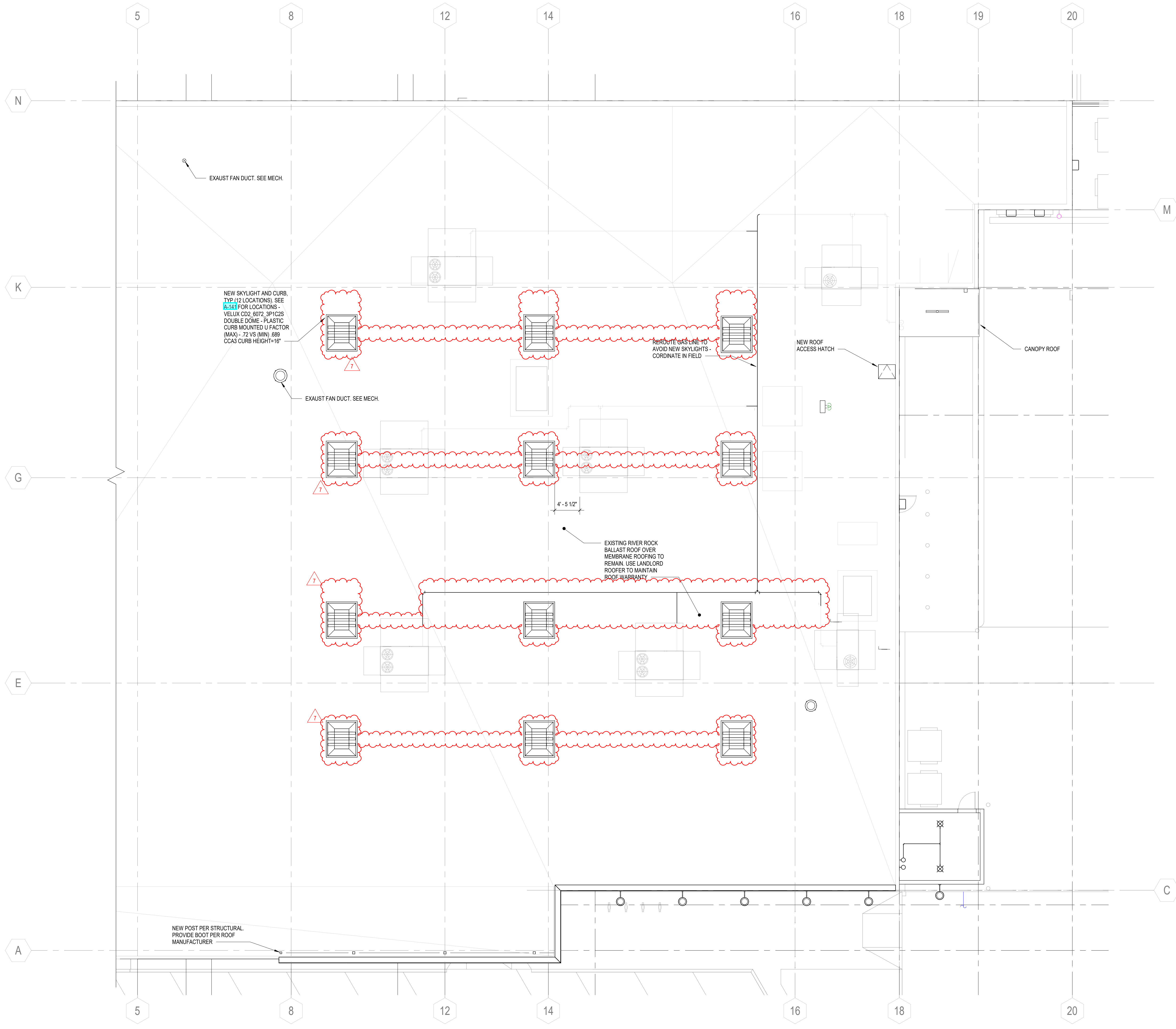
TRUE NORTH



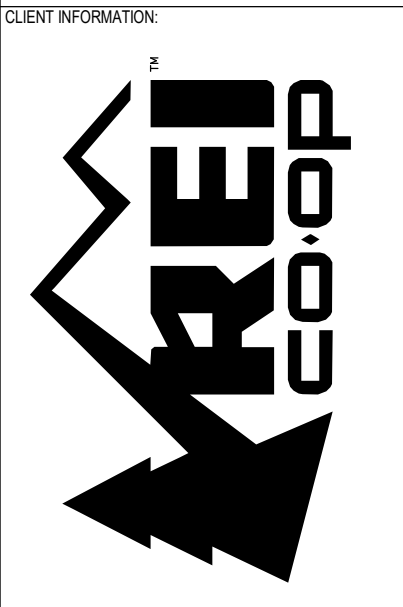
1 REFLECTED CEILING PLAN
SCALE: 1/8" = 1'-0"

REFLECTED CEILING PLAN

A-141



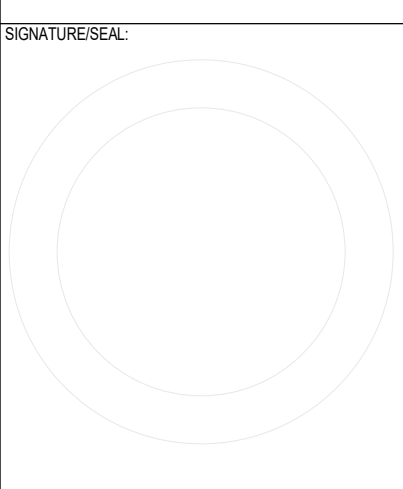
1. LOCATE RTUS ON EXIST CURBS PER DIMENSIONS INDICATED. GC TO CONFIRM LOCATIONS OF EXIST RTU CURBS AND NOTIFY ARCHITECT FOR RESOLUTION OF DISCREPANCIES PRIOR TO CONSTRUCTION.



ARCHITECT INFORMATION
CALLISONRTKL
CallisonRTKL, Inc.
1400 Pike Ave
Seattle, WA 98101
006-132864.81

CONSULTANT INFORMATION

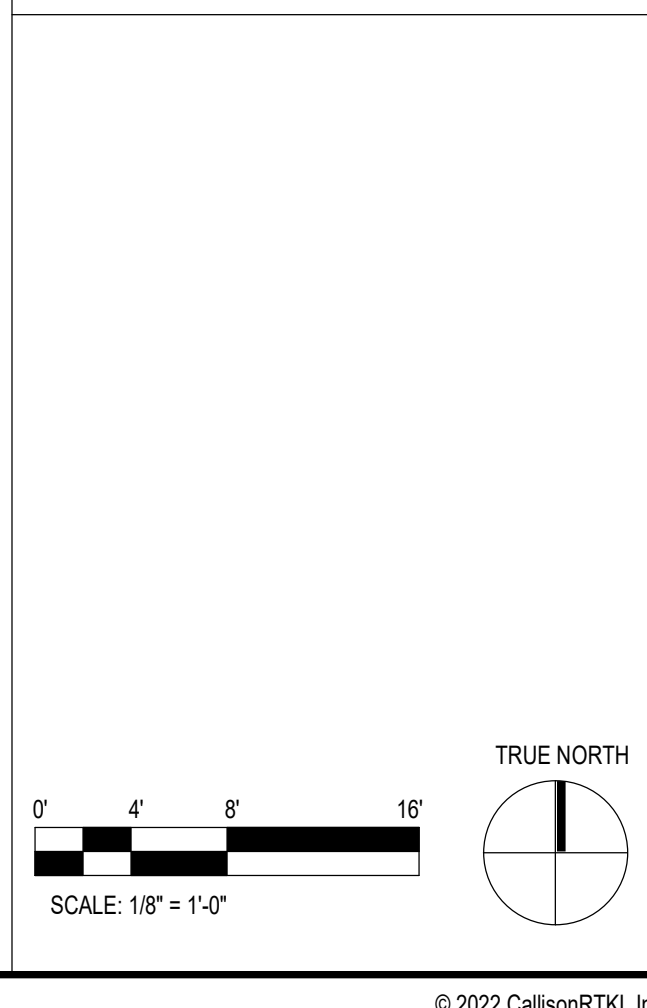
PROJECT INFORMATION
REI-GLENWOOD SPRINGS
3216 S. GLEN AVENUE
GLENWOOD SPRINGS,
CO, 81601

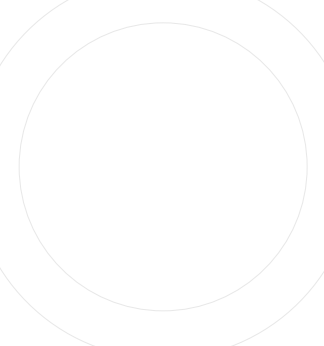
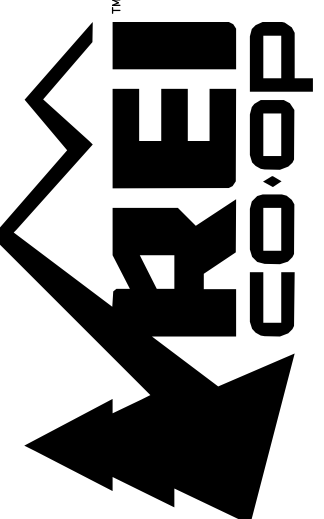


ISSUING/ISSUANCE LOG

REV	DATE	DESCRIPTION
1	11/05/21	PERMIT SET
2	12/20/21	BULLETIN 2
6	01/14/22	CONSTRUCTION SET
7	03/18/22	BULLETIN 7

SHEET LEGEND





REV	DATE	DESCRIPTION
1	11/05/21	PERMIT SET
7	03/18/22	BULLETIN 7

HW13-FITTING ROOM			
3 EA HINGERS	MCKINNEY	TA714 4.5 X 4.5 652	
1 EA DEADBOLT W/ VACANCY INDICATOR	BOMMER	LB4310C-450-630	
1 EA WALL STOP	TRIMCO	1270CV 626 (AT DOORS 122, 128, 127)	
1 EA OVERHEAD STOP	RIKSON	9-336 630 SNB (AT DOORS 121)	
3 EA SILENCERS	TRIMCO	1270CV 626	

CONFIRM HARDWARE MODIFICATION FOR BEST CORE AT DEADBOLT WITH REI CPM
SET HINGERS TO CLOSE BUT NOT LATCH THE DOOR

HW15-MULTI-OCCUPANT RESTROOM			
3 EA HINGERS	MCKINNEY	TA714 4.5 X 4.5 652	
1 EA PUSH PLATE	TRIMCO	1270CV 626	
1 EA DOOR PULL WITH PLATE	TRIMCO	1270CV 626	
1 EA LOCKSET	NORTON	UN1750 689 SNB	
2 EA KICKPLATE	ROCKWOOD	K1050 10" 630	
1 EA FOOT PULL	ROCKWOOD	FP1230 630	
1 EA WALL STOP	TRIMCO	1270CV 626	
3 EA SILENCERS	TRIMCO	1270CV 626	

HW16-SINGLE-OCCUPANT RESTROOM			
3 EA HINGERS	MCKINNEY	TA714 4.5 X 4.5 652	
1 EA DEADBOLT/INDICATOR	SCHLAGE	B571 626	
1 EA PUSH PLATE	ROCKWOOD	171E (CUT FOR CYLINDER)	
1 EA DOOR PULL WITH PLATE	TRIMCO	1014-89 630 CYCL	
1 EA CLOSER	NORTON	7500 689 SNB	
2 EA KICKPLATE	ROCKWOOD	K1050 10" 630	
1 EA WALL STOP	TRIMCO	1270CV 626	
3 EA SILENCERS	TRIMCO	1270CV 626	

HW17-SHOWER			
3 EA HINGERS	MCKINNEY	TA714 4.5 X 4.5 652	
1 EA DEADBOLT/INDICATOR	SCHLAGE	B571 626	
1 EA PUSH PLATE	ROCKWOOD	171E (CUT FOR CYLINDER)	
1 EA DOOR PULL WITH PLATE	TRIMCO	1014-89 630 CYCL	
1 EA THRESHOLD	PEMCO	169A	
2 EA KICKPLATE	ROCKWOOD	K1050 10" 630	
1 EA WALL STOP	TRIMCO	1270CV 626	
3 EA SILENCERS	TRIMCO	1270CV 626	

HW18-BIKE ASSEMBLY			
6 EA HINGERS	MCKINNEY	TA714 4.5 X 4.5 652	
1 EA LOCKSET	BEST	9K37R15D S3 626	
2 EA FLUSH BOLT	TRIMCO	3915-12" 626 (AT INACTIVE LEAF)	
1 EA DUST PROOF STRIKE	TRIMCO	3911 626 (AT INACTIVE LEAF)	
2 EA OVERHEAD STOP	RIKSON	6-336 630	
4 EA KICKPLATE	ROCKWOOD	K1050 10" 630	
1 EA SILENCERS			

HW19-COMMUNITY ROOM			
6 EA HINGERS	MCKINNEY	TA714 4.5 X 4.5 652	
1 EA LOCKSET	BEST	9K37R16D S3 626	
2 EA CLOSER/STOP/STOP OPEN	NORTON	CLP7900T 689 SNB	
1 EA FLUSH BOLT	TRIMCO	3915-12" 626 (AT INACTIVE LEAF)	
1 EA DUST PROOF STRIKE	TRIMCO	3911 US28D (AT INACTIVE LEAF)	
4 EA KICKPLATE	ROCKWOOD	K1050 10" 630	
1 EA SILENCERS			

HW40-DOUBLE METAL DOOR WITH ACCESS			
4 EA HINGERS	MCKINNEY	TA386 4.5 X 4.5 US320 NRP	
1 EA ELECTRIC STRIKE	HES	9600 24VDC FAIL SECURE 630	
1 EA EXIT DEVICE WITH ALARM	YALE	7108A X 630F 630 SNB	
1 EA OUTSIDE ENTRY CYLINDER	BEST	1E74 C4 RPS 626	
1 EA INSIDE ALARM CYLINDER	BEST	12E72 S2 RP 626	
1 EA LATCH/LATCHARD	PEMCO	3572RS	
1 EA CLOSER/STOP	NORTON	UN17500 689	
1 EA GASKET	PEMCO	588D	
1 EA DOOR BOTTOM	PEMCO	189D/CNB	
1 EA THRESHOLD	PEMCO	171A	
1 EA ARMOR PLATE	ROCKWOOD	K1050 30" 630 (INTERIOR)	
1 EA VIEWER	TRIMCO	976 US56D	
1 EA RISER DRAWING			
1 EA POINT TO POINT DRAWING			

SYSTEM DESCRIPTION:
KEY ENTRY FROM EXTERIOR WILL NOT ACTIVATE THE ALARM SYSTEM. THE EXIT DEVICE CONTAINS AN INTERNAL HORN. WHEN THE TOUCHBAR IS DEPRESSED, THE HORN SOUNDS TO PROVIDE AN AUDIBLE MEANS OF SIGNALING THAT THE OPENING HAS BEEN VIOLATED. A DECAL THAT CAN BE APPLIED TO THE DOOR STATING "EMERGENCY EXIT ONLY. ALARM WILL SOUND" IS PROVIDED WITH THE EXIT DEVICE.

HW1-MAIN ENTRY			
BY SHELL CONTRACTOR:			
2 EA GEAR HINGE	PEMCO	DFM SLF HD1	
1 EA LONG THROW LOCK	ADAMS-RITE	MS-1850A	
1 EA 3 PT HEADER BOLT (INACTIVE)	ADAMS-RITE	4015	
1 EA 3 PT THRESHOLD BOLT (INACTIVE)	ADAMS-RITE	4015	
2 EA MORTISE CYLINDER (ACTIVE)	BEST	1E74 C181 RPS 626	
1 EA CYLINDER	BEST	1E74 C605 (CAM AS REQUIRED FOR KEY SWITCH)	
1 EA PULL	TRIMCO	1822-1 (SECURED TO PREVENT ROTATION)	
1 EA THRESHOLD	PEMCO	169D	
1 EA KICK PLATE	ROCKWOOD	K1050 10" 630	
2 EA PUSH PLATE	ROCKWOOD	71C	
1 SET GASKET	PEMCO	588D	
2 EA DOOR BOTTOM	PEMCO	189D/CNB	
2 EA MEETING STILE GASKET	PEMCO	5025 ANB 98"	
1 EA RISER DRAWING			
1 EA POINT TO POINT DRAWING			

BY TENANT CONTRACTOR:
1 EA SIGN TRIMCO #773 "This door to remain unlocked."
1 EA CUSTOM DOOR PULL PROVIDED BY REI. INSTALLED BY TENANT GC
1 EA LOW ENERGY AUTOMATIC DOOR OPERATOR SYSTEM PROVIDED AND INSTALLED BY TENANT GC PER PROJECT MANUAL SECTION 087116

SYSTEM DESCRIPTION:
DOORS ARE LOCKED AND UNLOCKED MANUALLY WITH A KEY. WHEN IN THE UNLOCKED POSITION THE AUTOMATIC OPERATOR SYSTEM IS TURNED ON AND OFF AT THE ELECTRICAL PANEL THROUGH NOVAC CONTROLS. THE INSIDE PUSH SWITCH AND OUTSIDE PUSH SWITCH ARE MOUNTED AS SHOWN ON THE DRAWINGS. BOTH LEAFS MUST REMAIN UNLOCKED DURING BUSINESS HOURS.

HW2-VESTIBULE			
2 EA GEAR HINGE	PEMCO	DFM SLF HD1	
4 EA KICK PLATE	ROCKWOOD	K1050 630	
4 EA PUSH PLATE	ROCKWOOD	71C	
2 EA PULL	ROCKWOOD	RP258 630	
2 EA FLOOR STOP	TRIMCO	1214 626	
2 EA DOOR BOTTOM	PEMCO	189D/CNB	
1 SET GASKET	PEMCO	588D	
2 EA MEETING STILE GASKET	PEMCO	5025 ANB 98"	
1 EA RISER DRAWING			
1 EA POINT TO POINT DRAWING			

LOW ENERGY AUTOMATIC DOOR OPERATOR SYSTEM PROVIDED AND INSTALLED BY TENANT GC PER PROJECT MANUAL SECTION 087116

HW3-STOREFRONT DOOR WITH ACCESS			
BY SHELL CONTRACTOR:			
3 EA HINGE	MCKINNEY	TA386 4.5 X 4.5 US320 NRP	
1 EA ELECTRIC STRIKE	HES	9600 24VDC FAIL SECURE 630	
1 EA EXIT DEVICE WITH ALARM	YALE	7108A X 630F 630 SNB	
1 EA OUTSIDE ENTRY CYLINDER	BEST	1E74 C4 RPS 626	
1 EA INSIDE ALARM CYLINDER	BEST	12E72 S2 RP 626	
1 EA LATCH/LATCHARD	PEMCO	3572RS	
1 EA CLOSER/STOP	NORTON	UN17500 689	
1 EA GASKET	PEMCO	588D	
1 EA DOOR BOTTOM	PEMCO	189D/CNB	
1 EA THRESHOLD	PEMCO	171D	
1 EA KICKPLATE	ROCKWOOD	K1050 10" 630 (INTERIOR)	
1 EA RISER DRAWING			
1 EA POINT TO POINT DRAWING			

SYSTEM DESCRIPTION:
KEY ENTRY FROM EXTERIOR WILL NOT ACTIVATE THE ALARM SYSTEM. THE EXIT DEVICE CONTAINS AN INTERNAL HORN. WHEN THE TOUCHBAR IS DEPRESSED, THE HORN SOUNDS TO PROVIDE AN AUDIBLE MEANS OF SIGNALING THAT THE OPENING HAS BEEN VIOLATED. A DECAL THAT CAN BE APPLIED TO THE DOOR STATING "EMERGENCY EXIT ONLY. ALARM WILL SOUND" IS PROVIDED WITH THE EXIT DEVICE.

HW4-METAL DOOR WITH ACCESS			
BY SHELL CONTRACTOR:			
3 EA HINGE	MCKINNEY	TA386 4.5 X 4.5 US320 NRP	
1 EA ELECTRIC STRIKE	HES	9600 24VDC FAIL SECURE 630	
1 EA EXIT DEVICE WITH ALARM	YALE	7108A X 630F 630 SNB	
1 EA OUTSIDE ENTRY CYLINDER	BEST	1E74 C4 RPS 626	
1 EA INSIDE ALARM CYLINDER	BEST	12E72 S2 RP 626	
1 EA LATCH/LATCHARD	PEMCO	3572RS	
1 EA CLOSER/STOP	NORTON	UN17500 689	
1 EA GASKET	PEMCO	588D	
1 EA DOOR BOTTOM	PEMCO	189D/CNB	
1 EA THRESHOLD	PEMCO	171A	
1 EA ARMOR PLATE	ROCKWOOD	K1050 30" 630 (INTERIOR)	
1 EA VIEWER	TRIMCO	976 US56D	
1 EA RISER DRAWING			
1 EA POINT TO POINT DRAWING			

SYSTEM DESCRIPTION:
KEY ENTRY FROM EXTERIOR WILL NOT ACTIVATE THE ALARM SYSTEM. THE EXIT DEVICE CONTAINS AN INTERNAL HORN. WHEN THE TOUCHBAR IS DEPRESSED, THE HORN SOUNDS TO PROVIDE AN AUDIBLE MEANS OF SIGNALING THAT THE OPENING HAS BEEN VIOLATED. A DECAL THAT CAN BE APPLIED TO THE DOOR STATING "EMERGENCY EXIT ONLY. ALARM WILL SOUND" IS PROVIDED WITH THE EXIT DEVICE.

HWS-EGRESS ONLY			
BY SHELL CONTRACTOR:			
3 EA HINGE	MCKINNEY	TA386 4.5 X 4.5 US320 NRP	
1 EA EXIT DEVICE WITH ALARM	YALE	7108A X 630F 630 SNB	
1 EA INSIDE CYLINDER	BEST	12E72 S2 RP 626	
1 EA LATCH/LATCHARD	PEMCO	3572RS	
1 EA CLOSER/STOP	NORTON	UN17500 689	
1 EA GASKET	PEMCO	588D	
1 EA DOOR BOTTOM	PEMCO	189D/CNB	
1 EA THRESHOLD	PEMCO	171A	
1 EA KICK PLATE	ROCKWOOD	K1050 10" 630 (INTERIOR)	
2 EA VIEWER	TRIMCO	976 US56D	

SYSTEM DESCRIPTION:
NO RE-ENTRY FROM THE EXTERIOR SIDE OF THE DOOR. THE EXIT DEVICE CONTAINS AN INTERNAL HORN. WHEN THE TOUCHBAR IS DEPRESSED, THE HORN SOUNDS TO PROVIDE AN AUDIBLE MEANS OF SIGNALING THAT THE OPENING HAS BEEN VIOLATED. A DECAL THAT CAN BE APPLIED TO THE DOOR STATING "EMERGENCY EXIT ONLY. ALARM WILL SOUND" IS PROVIDED WITH THE EXIT DEVICE.

HW6-OVERHEAD DOOR (MOTORIZED)			
1 EA SURFACE MOUNTED CONTROL STATION	IMTIX	3BLM-6C	

USE REI PREFERRED VENDOR - NO SUBSTITUTIONS

HW10-COMBO LOCK			
3 EA HINGERS	MCKINNEY	TA714 4.5 X 4.5 652	
1 EA DEADLOCK	KABA	58MPLEX 302/18WV_260-41	
1 EA CLOSER	NORTON	7500 689 SNB	
2 EA KICKPLATE	ROCKWOOD	K1050 10" 630	
1 EA WALL STOP	TRIMCO	1270CV 626 (AT DOORS 145)	
3 EA SILENCERS			

*WHERE WALL STOPS CAN NOT BE USED, OMIT WALL STOP AND REVISE CLOSER TO: CLOSER/STOP - NORTON - UN17500 689 SNB

HW11-KEY SECURED-CLASSROOM			
3 EA HINGERS	MCKINNEY	TA714 4.5 X 4.5 652	
1 EA LOCKSET	BEST	9K37R15D S3 626	
1 EA CLOSER	NORTON	7500 689 SNB	
2 EA KICKPLATE	ROCKWOOD	K1050 10" 630	
1 EA WALL STOP	TRIMCO	1270CV 626 (AT DOORS 170)	
3 EA SILENCERS			

*WHERE WALL STOPS CAN NOT BE USED, OMIT WALL STOP AND REVISE CLOSER TO: CLOSER/STOP - NORTON - UN17500 689 SNB

HW12-KEY SECURED-STOREROOM			
3 EA HINGERS	MCKINNEY	TA714 4.5 X 4.5 652	
1 EA LOCKSET	BEST	9K37D15D S3 626	
1 EA CLOSER	NORTON	7500 689 SNB	
2 EA KICKPLATE	ROCKWOOD	K1050 10" 630	
1 EA WALL STOP	TRIMCO	1270CV 626 (AT DOORS 165)	
3 EA SILENCERS			

*WHERE WALL STOPS CAN NOT BE USED, OMIT WALL STOP AND REVISE CLOSER TO: CLOSER/STOP - NORTON - UN17500 689 SNB

GENERAL NOTES:
A. ALL DOORS 1-3/4" THICK, UON
B. WOOD DOORS ARE FLUSH CONSTRUCTION, EXCEPT TYPE G, H, AND J ARE STILE & RAIL
C. REFER TO REFLECTED CEILING PLANS, MECH. & ELEC DRAWINGS & SPECIFICATIONS DIVISION 8 FOR ACCESS DOORS
D. REFER TO FINISH SCHEDULE AND SECTION 09000 OF THE PROJECT MANUAL FOR PAINT AND STAIN INFORMATION
E. ALL WOOD DOORS ARE SOLID CORE CONSTRUCTION, UON
F. PROVIDE SAFETY GLAZING WHERE REQUIRED PER IBC SECTION 2406
G. GENERAL ABBREVIATIONS: LAM = LAMINATED; WD = WOOD; HM = HOLLOW METAL; CO = CASER OPENING; STEL = STEEL; GL = GLASS; ALUM = ALUMINUM; EXIST = EXISTING; MFR = MANUFACTURER PROVIDED
H. INTERIOR & EXTERIOR DOORS WITH CLOSERS REQUIRE A MAXIMUM OPENING EFFORT OF 5 LBS
J. ALL DOOR SURFACES (8" TOTAL) TO RECEIVE SCHEDULED FINISH
K. ALL DOOR HANDLES WITH LATCH ARE LEVER TYPE (TYP)
L. ALL EXISTING DOORS MUST HAVE FREE OPENING HARDWARE
M. ALL EXIST DOORS MUST BE OPERABLE FROM THE INTERIOR WITHOUT THE USE OF A KEY OR SPECIAL KNOWLEDGE OR EFFORT
N. SET CLOSURES TO MOVE DOOR FROM 90° TO 12° IN A MINIMUM OF 5 SECONDS
O. ALL OPERABLE HARDWARE TO FIT COMPLETELY WITHIN 34" - 48" AFF RANGE
P. DOOR SURFACES WITHIN 10' OF THE FLOOR SHALL BE SMOOTH FOR FULL WIDTH OF DOOR - CAP ANY CREATED CAVITIES

KEYNOTES:
1. INSTALL REI CUSTOM PULLS (FOCI), FRONT ONLY. SEE 11A-603
2. INSTALL EXIT AND ACCESSIBILITY SIGNAGE PER DETAIL 8A-603
3. INSTALL CLOSER ON INSIDE OF ROOM
4. ADD WT-9 TO INSIDE OF VISION PANEL
5. UNDERCUT DOOR 1"
6. FINISH P-51 ON OUTSIDE OF DOOR, FINISH P-9 ON INSIDE OF DOOR
7. EMERGENCY ACCESSIBLE ACCESS FUNCTION IN LOCKSET
8. APPLY VINYL EGRESS SIGNAGE PER DETAIL 8A-603 TO EACH LEAF OF INDICATED DOOR
9. ON EXTERIOR SIDE OF DOOR, PAINT "REI" IN 8" HIGH LETTERS (CONTRASTING PAINT)
10. INSTALL HOUSING FOR FOOD INTERIOR ON EXTERIOR SIDE OF DOOR - SEE ELEC FOR MORE INFORMATION
11. FOOD KEYPAD AT INTERIOR SIDE OF DOOR - SEE ELEC FOR MORE INFORMATION
12. NO RE-ENTRY FROM PULL SIDE OF DOOR
13. COMPARE EXISTING HARDWARE TO INDICATED HARDWARE GROUP. NOTIFY THE ARCHITECT FOR RESOLUTION OF ALL DISCREPANCIES PRIOR TO CONSTRUCTION
14. INSTALL PREP HOLE
15. VERIFY EXISTING DOOR IN OPERATIONAL CONDITION AND FIT FOR RE-USE PRIOR TO START OF CONSTRUCTION
16. PAINT EXTERIOR OF DOORS & FRAME TO MATCH BASE BUILDING
17. FINISH HALLWAY FACE TO MATCH HALLWAY FINISH (P-51) MATCH FITTING ROOM FACE TO MATCH FITTING ROOM FINISH (P-21)
18. PROVIDE DOOR GRILL MATCH EXISTING SIZE AND OPENNESS.

DOOR SCHEDULE										
Mark	Room Name	Width	Height	Door Type (See 11A-604)	Door Material	Door Finish	Frame Material	Frame Finish	Hardware Set (See A-604)	Comments
100a	VESTIBULE (TO EXTERIOR)	6'-8"	8'-0"	G	ALUM	M-3	ALUM	M-3	HW1	1, PAIR AT 3'-4", 2
100b	VESTIBULE (TO INTERIOR)	6'-8"	8'-0"	G	ALUM	M-3	ALUM	M-3	HW2	2, PAIR AT 3'-4"
110	EGRESS	3'-0"	7'-0"	A	HM	P-51	HM	P-51	HW5	8, 12
120	HALLWAY	4'-0"	7'-0"	CO	-	-	HM	P-51	-	-
122	FITTING ROOM	3'-0"	7'-0"	K	WD	NOTE 17	HM	NOTE 17	HW13	-
125	HALLWAY	4'-0"	7'-0"	CO	-	-	HM	P-51	-	-
128	FITTING ROOM	3'-0"	7'-0"	K	WD	NOTE 17	HM	NOTE 17	HW13	-
127	FITTING ROOM	3'-0"	7'-0"	K	WD	NOTE 17	HM	NOTE 17	HW13	-
130	OFFICE AREA	3'-0"	7'-0"	B	WD	P-51	HM	P-51	HW10	3, 4
140	HALLWAY	4'-0"	7'-0"	CO	-	-	HM	P-51	-	-
141	HALL GENDER RESTROOM	3'-0"	7'-0"	A	WD	NOTE 6	HM	NOTE 6	HW16	3, 5, 6, 7
142	HALL GENDER RESTROOM	3'-0"	7'-0"	A	WD	NOTE 6	HM	NOTE 6	HW16	3, 5, 6, 7
146	EMPLOYEE ROOM	3'-0"	7'-0"	B	WD					