

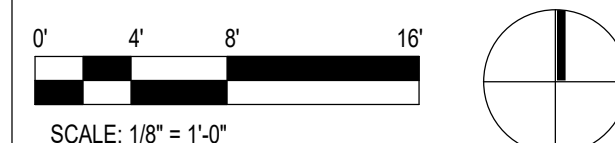
## SHEET NOTES

- IBC 2015 SECTION 1007.10 - AT AN EXIT SERVING AN ACCESSIBLE SPACE BUT NOT PROVIDING APPROVED ACCESSIBLE EGRESS, DIRECTION SIGNAGE INDICATING THE LOCATION OF THE OTHER MEANS OF EGRESS, AND WHICH ARE ACCESSIBLE MEANS OF EGRESS SHALL BE PROVIDED. SEE DETAIL 14A.603
- MERCANTILE FURNITURE ARRANGEMENT TO PROVIDE 30' MIN CLEAR ACCESS AISLES. THE COMMON PATH OF EGRESS TRAVEL SHALL NOT EXCEED 30 FEET FROM ANY POINT IN THE MERCHANDISE PAD PER IBC 2015 1018.4.
- ACCESSIBLE CASHWRAPS PROVIDED WITH 2'-10" MAX HEIGHT AFF.

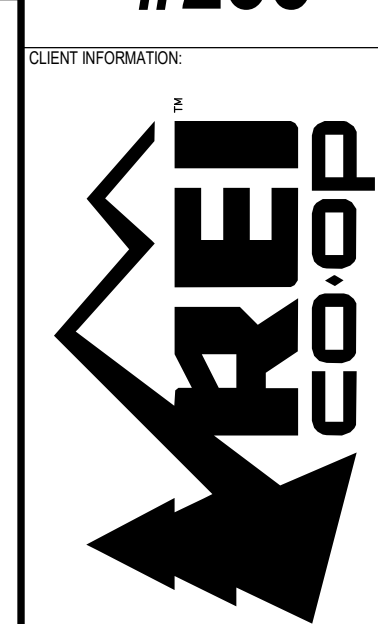
OCCUPANCY			
Name	Area	Occupant Load Factor	Occupant Load
BUSINESS (100 NET)			
ALL GENDER	103 SF	100	2
BIKE ASSEMBLY	798 SF	100	8
CONFERENCE ROOM	109 SF	100	2
EMPLOYEE ROOM	387 SF	100	4
OFFICE AREA	253 SF	100	3
SHOWER	111 SF	100	2
STORAGE	1,556 SF	100	16
MERCANTILE (60 GROSS)			
FITTING ROOM	76 SF	60	2
FITTING ROOM	60 SF	60	2
FITTING ROOM	42 SF	60	1
HALLWAY	35 SF	60	1
HALLWAY	52 SF	60	1
HALLWAY	122 SF	60	3
RETAIL	13,850 SF	60	231
VESTIBULE	106 SF	60	2
STORAGE / EQUIPMENT (300 GROSS)			
FIRE RISER ROOM	14 SF	300	1
RSPU STORAGE	254 SF	300	1
SHIPPING/ RECEIVING	1,165 SF	300	4
TDP CLOSET	97 SF	300	1
TOTAL OCC: 288			

## SHEET LEGEND

- TRAVEL DISTANCE (TD)
- EXTENT OF COMMON PATH OF EGRESS TRAVEL (CPET)
- CEILING MOUNTED EXIT SIGN, SEE ELECTRICAL
- WALL MOUNTED EXIT SIGN, SEE ELECTRICAL
- FIRE EXTINGUISHER



## CLIENT INFORMATION



## ARCHITECT INFORMATION

CALLISONRTKL™

## CONSULTANT INFORMATION

## PROJECT INFORMATION

REI-GLENWOOD SPRINGS

3216 S. GLEN AVENUE  
GLENWOOD SPRINGS,  
CO. 81601

## SIGNATURE/SEAL

## DRAWING SOURCE LOG

REV	DATE	DESCRIPTION
1	11/05/21	PERMIT SET
2	12/20/21	BULLETIN 2
3	01/14/22	CONSTRUCTION SET
4	03/23/22	BULLETIN 8

## SHEET TITLE

EGRESS PLAN

## SHEET NUMBER

A-003





**A-121**



© 2022 CallisonRTKL Inc.

SHEET NUMBER:  
**A-141**

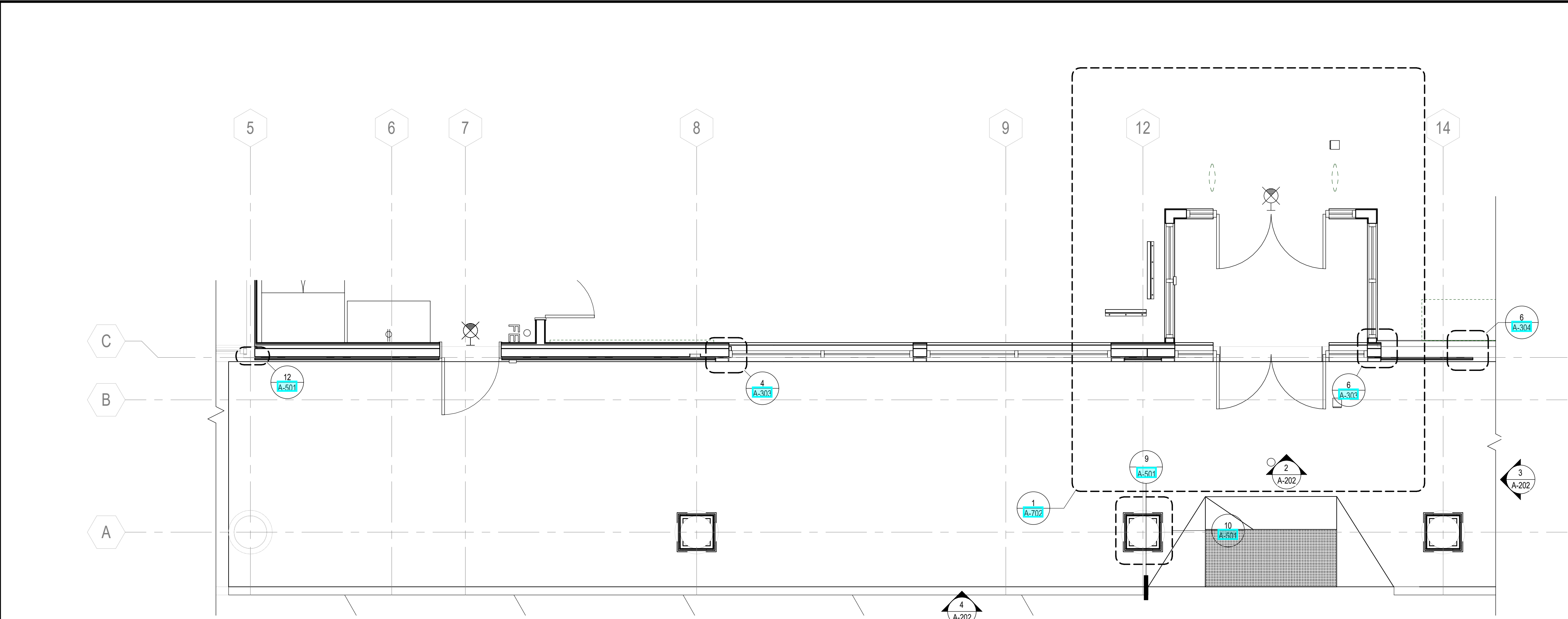
© 2022 CallisonRTKL Inc.



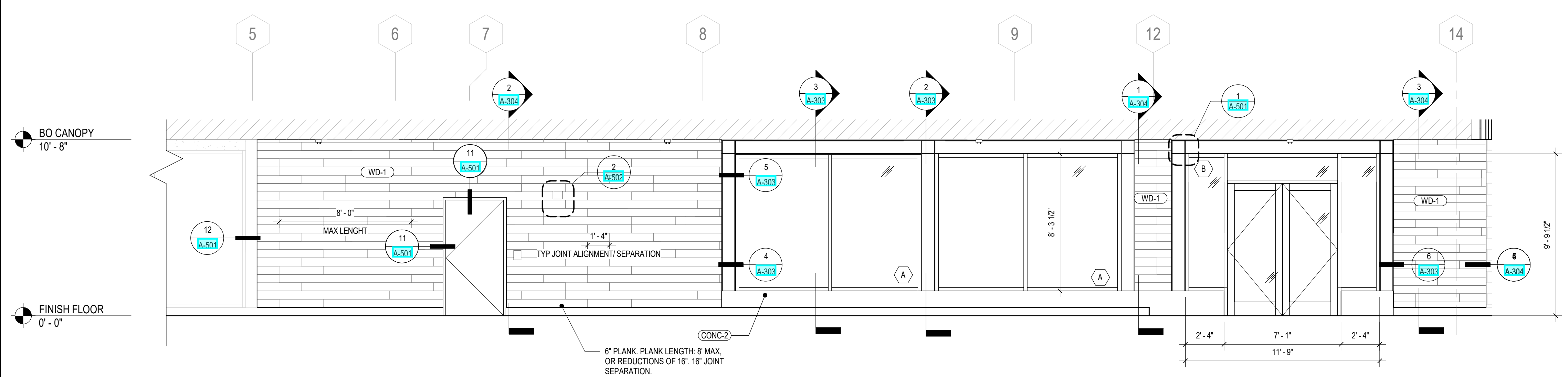


## 5 EXTERIOR FINISH SCHEDULE

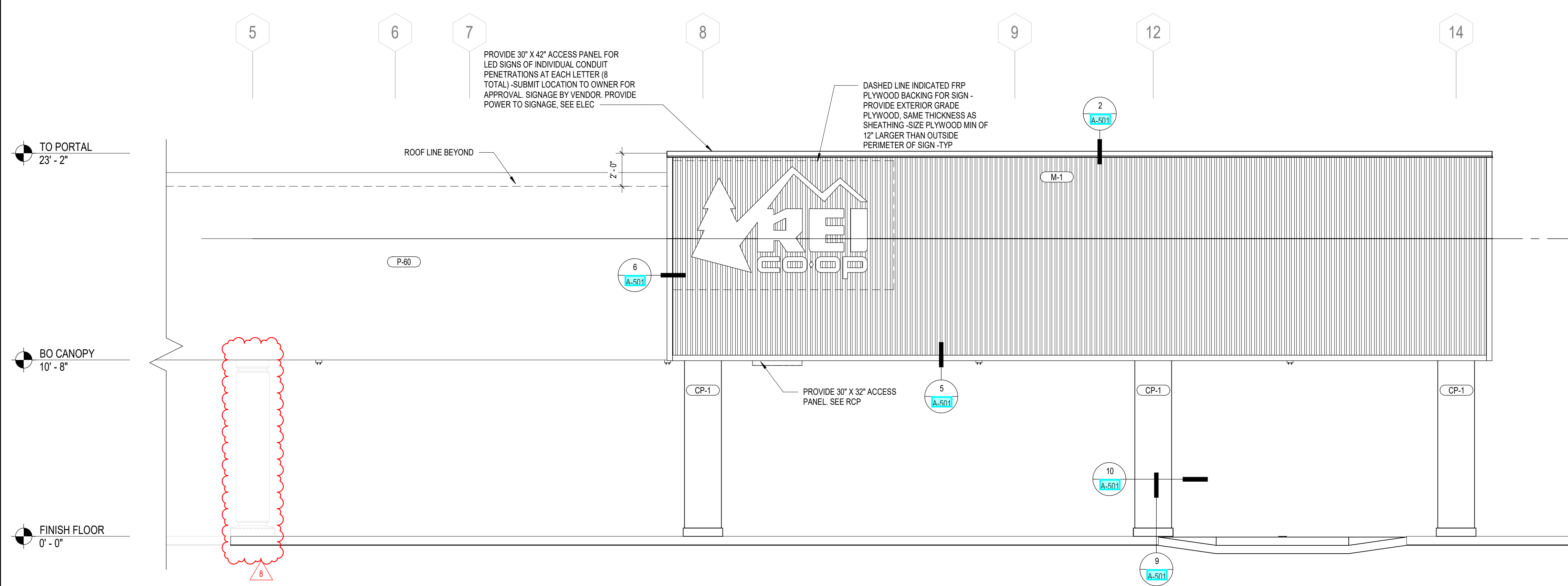




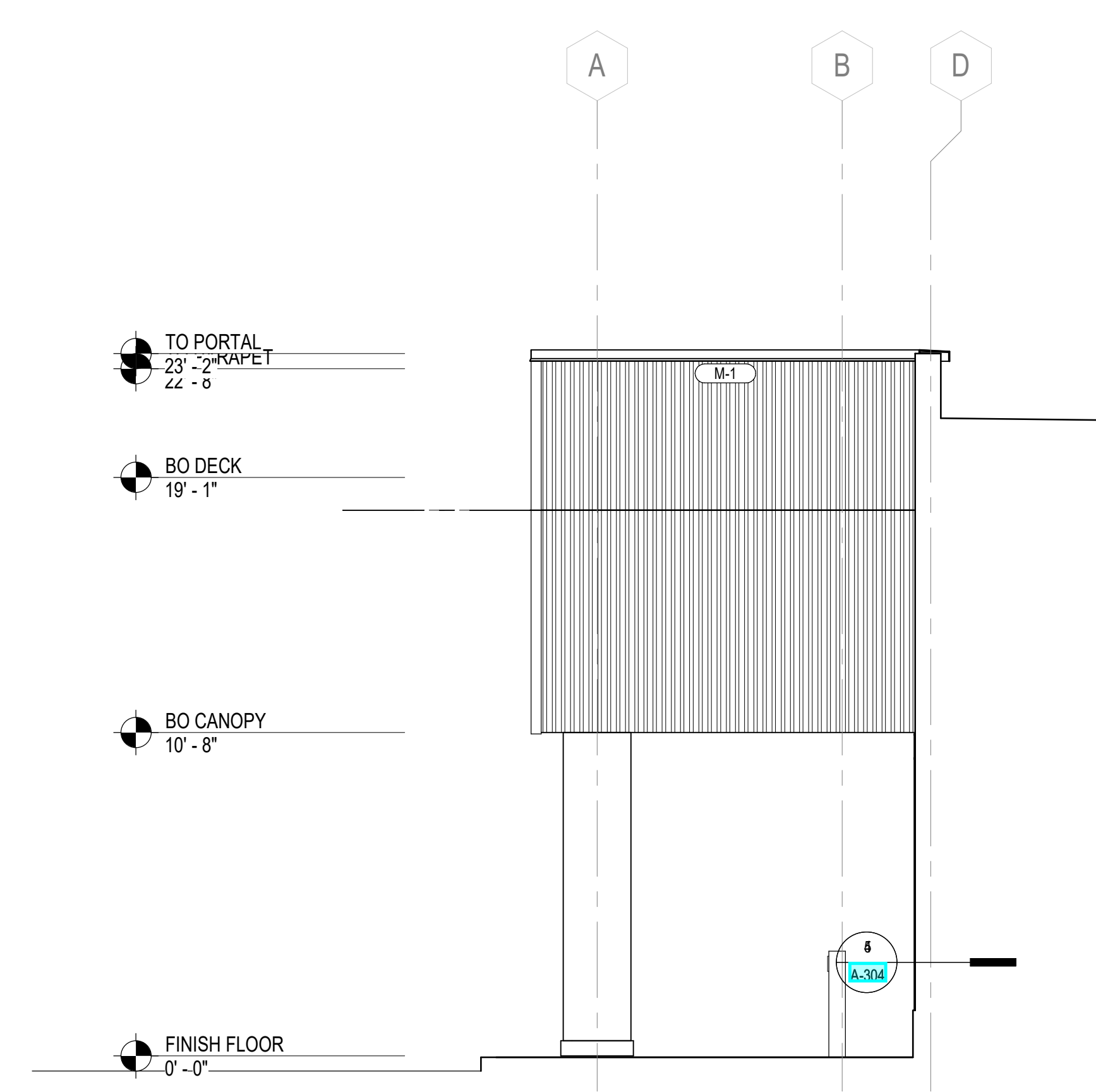
1 ENLARGED ENTRY PORTAL PLAN  
SCALE: 1/4" = 1'-0"



2 ENLARGED STOREFRONT ELEVATION  
SCALE: 1/4" = 1'-0"



4 ENLARGED ENTRY PORTAL ELEVATION  
SCALE: 1/4" = 1'-0"



3 ENLARGED ENTRY PORTAL SIDE ELEVATION  
SCALE: 1/4" = 1'-0"

CLIENT STORE NUMBER  
**#235**

CLIENT INFORMATION

ARCHITECT INFORMATION  
**CALLISONRTKL™**  
CallisonRTKL, Inc.  
1400 9th Ave  
Seattle, WA 98101  
006-132864.81

CONSULTANT INFORMATION

PROJECT INFORMATION  
**REI-GLENWOOD SPRINGS**  
3216 S. GLEN AVENUE  
GLENWOOD SPRINGS,  
CO. 81601

SIGNATURE SEAL

ISSUING OFFICE LOG  
REV DATE DESCRIPTION  
2 12/20/21 BULLETIN 2  
01/14/22 CONSTRUCTION SET  
8 03/23/22 BULLETIN 8

SHEET TITLE  
**ENLARGED ENTRY PORTAL**

SHEET NUMBER  
**A-202**



DOOR SCHEDULE										
Mark	Room Name	Width	Height	Door Type (See 1/A-604)	Door Material	Door Finish	Frame Material	Frame Finish	Hardware Set (See A-604)	Comments
100a	VESTIBULE (TO EXTERIOR)	6'-8"	8'-0"	G	ALUM	M-3	ALUM	M-3	HW1	1. PAIR AT 3'-4", 2
100b	VESTIBULE (TO INTERIOR)	6'-8"	8'-0"	G	ALUM	M-3	ALUM	M-3	HW2	2. PAIR AT 3'-4"
110	EGRESS	3'-0"	7'-0"	A	HM	P-51	HM	P-51	HW5	8, 12
120	HALLWAY	4'-0"	7'-0"	CO	-	-	HM	P-51	-	-
122	FITTING ROOM	3'-0"	7'-0"	K	WD	(P-51) 8	HM	(P-51) 8	HW13	-
125	HALLWAY	4'-0"	7'-0"	CO	-	-	HM	P-51	-	-
126	FITTING ROOM	3'-0"	7'-0"	K	WD	(P-51) 8	HM	(P-51) 8	HW13	-
127	FITTING ROOM	3'-0"	7'-0"	K	WD	(P-51) 8	HM	(P-51) 8	HW13	-
130	OFFICE AREA	3'-0"	7'-0"	B	WD	(P-51) 8	HM	(P-51) 8	HW10	3, 4
140	HALLWAY	4'-0"	7'-0"	CO	-	-	HM	P-51	-	-
141	ALL GENDER RESTROOM	3'-0"	7'-0"	A	WD	NOTE 6	HM	NOTE 6	HW16	3, 5, 6, 7
142	ALL GENDER RESTROOM	3'-0"	7'-0"	A	WD	NOTE 6	HM	NOTE 6	HW16	3, 5, 6, 7
145	EMPLOYEE ROOM	3'-0"	7'-0"	B	WD	P-51	HM	P-51	HW10	3, 4
145b	PUMP RISER	3'-0"	7'-0"	A	WD	P-21	HM	P-21	HW12	18
146	SHOWER	3'-0"	7'-0"	A	WD	P-21	HM	P-21	HW17	5, 7
150	BIKE ASSEMBLY	6'-0"	8'-0"	J	WD	TF-9	HM	P-56	HW18	3. PAIR AT 3'-0"
160a	LOADING DOCK (PERSON)	6'-0"	7'-0"	D	HM	P-59	HM	P-59	HW40	9, 10, 11, 16
160b	LOADING DOCK (OVERHEAD)	6'-0"	9'-2"	L	MFR	MFR	MFR	MFR	HW6	12
162a	RSPU STORAGE	3'-0"	7'-0"	B	WD	P-51	HM	P-51	HW10	3, 4
162b	EMPLOYEE ENTRANCE	3'-0"	7'-0"	A	HM	P-51	HM	P-51	HW4	10, 11
164a	STORAGE	4'-0"	7'-0"	CO	-	-	HM	P-51	-	-
164b	STORAGE	6'-0"	7'-0"	F	MFR	MFR	HM	MFR	HW14	3. PAIR AT 3'-0"
165	TOP STORAGE	3'-0"	7'-0"	A	WD	P-57	HM	P-57	HW1	11
170	CONFERENCE ROOM	3'-0"	7'-0"	B	WD	P-51	HM	P-51	11	3, 4

#### GENERAL NOTES:

- ALL DOORS 1-3/4" THICK, UON
- WOOD DOORS ARE FLUSH CONSTRUCTION, EXCEPT TYPE G, H, AND J ARE STILE & RAIL
- REFER TO REFLECTED CEILING PLANS, MECH, & ELEC DRAWINGS & SPECIFICATIONS DIVISION 8 FOR ACCESS DOORS
- REFER TO FINISH SCHEDULE AND SECTION 09000 OF THE PROJECT MANUAL FOR PAINT AND STAIN INFORMATION
- ALL WOOD DOORS ARE SOLID CORE CONSTRUCTION, UON
- PROVIDE SAFETY GLAZING WHERE REQUIRED PER IBC SECTION 2408
- GENERAL ABBREVIATIONS: LAM = LAMINATED; WD = WOOD; HM = HOLLOW METAL; CO = CASED OPENING; STL = STEEL; GL = GLASS; ALUM = ALUMINUM; EXIST = EXISTING; MFR = MANUFACTURER PROVIDED
- INTERIOR & EXTERIOR DOORS WITH CLOSERS REQUIRE A MAXIMUM OPENING EFFORT OF 5 LBS
- ALL DOOR SURFACES (BOTH) TO RECEIVE SCHEDULED FINISH
- K, ALL DOOR HANDLES WITH LATCH ARE LEVER TYPE (TYP)
- L, ALL EXIT DOORS MUST HAVE FREE OPENING HARDWARE
- M, ALL EXIT DOORS MUST BE OPERABLE FROM THE INTERIOR WITHOUT THE USE OF A KEY OR SPECIAL KNOWLEDGE OR EFFORT
- N, SET CLOSURES TO MOVE DOOR FROM 90° TO 12° IN A MINIMUM OF 5 SECONDS
- O, ALL OPERABLE HARDWARE TO FIT COMPLETELY WITHIN 3/4" - 48" AFF RANGE
- P, DOOR SURFACES WITHIN 10" OF THE FLOOR SHALL BE SMOOTH FOR FULL WIDTH OF DOOR - CAP ANY CREATED CAVITIES

#### KEYNOTES:

- INSTALL REI CUSTOM PULLS (FOIC), FRONT ONLY, SEE 11/A-603
- INSTALL EXIT AND ACCESSIBILITY SIGNAGE PER DETAIL 8/A-603
- INSTALL CLOSER ON INSIDE OF ROOM
- ADD WT-9 TO INSIDE OF VISION PANEL
- UNDERCUT DOOR 1"
- FINISH P-51 ON OUTSIDE OF DOOR, FINISH P-9 ON INSIDE OF DOOR
- EMERGENCY ACCESSIBLE ACCESS FUNCTION IN LOCKSET
- APPLY VINYL EGRESS SIGNAGE PER DETAIL 8/A-603 TO EACH LEAF OF INDICATED DOOR
- ON EXTERIOR SIDE OF DOOR, PAINT "REF" IN 6" HIGH LETTERS (CONTRASTING PAINT)
- INSTALL HOUSING FOR FIDO INTERCOM ON EXTERIOR SIDE OF DOOR - SEE ELEC FOR MORE INFORMATION
- FOOD KEYPAD AT INTERIOR SIDE OF DOOR - SEE ELEC FOR MORE INFORMATION
- NO RE-ENTRY FROM PULL SIDE OF DOOR
- COMPARE EXISTING HARDWARE TO INDICATED HARDWARE GROUP. NOTIFY THE ARCHITECT FOR RESOLUTION OF ALL DISCREPANCIES PRIOR TO CONSTRUCTION
- INSTALL REEP HOLE
- VERIFY EXISTING DOOR IN OPERATIONAL CONDITION AND FIT FOR RE-USE PRIOR TO START OF CONSTRUCTION
- PAINT EXTERIOR OF DOOR & FRAME TO MATCH BASE BUILDING
- FINISH HALLWAY FACE TO MATCH HALLWAY FINISH (P-21) MATCH FITTING ROOM FACE TO MATCH FITTING ROOM FINISH (P-21)
- PROVIDE DOOR GRILL MATCH EXISTING SIZE AND OPENNESS

#### HW1-MAIN ENTRY

##### BY SHELL CONTRACTOR:

2 EA GEAR HINGE	PEMKO	DFM SLF HD1
1 EA LONG THROW LOCK	ADAMS-RITE	MS-1850A
1 EA 3 PT HEADER BOLT (INACTIVE)	ADAMS-RITE	4015
1 EA 3 PT THRESHOLD BOLT (INACTIVE)	ADAMS-RITE	4015
2 EA MORTISE CYLINDER (ACTIVE)	BEST	1E74 C181 RP3 626
1 EA CYLINDER	BEST	1E74 626 (CAN AS REQUIRED FOR KEY SWITCH)
1 EA PULL	TRIMCO	1822-1 (SECURED TO PREVENT ROTATION)
1 EA THRESHOLD	PEMKO	169D
4 EA KICK PLATE	ROCKWOOD	K1050 10" 630
2 EA PUSH PLATE	ROCKWOOD	71C
1 SET GASKET	PEMKO	S88D
2 EA DOOR BOTTOM	PEMKO	1809T0NB
2 EA MEETING STILE GASKET	PEMKO	5025 ANB 96"
1 EA RISER DRAWING		
1 EA POINT TO POINT DRAWING		

##### BY TENANT CONTRACTOR:

1 EA SIGN	TRIMCO	#773 "This door to remain unlocked."
1 EA CUSTOM DOOR PULL	PROVIDED BY REI	INSTALLED BY TENANT GC
1 EA LOW ENERGY AUTOMATIC DOOR OPERATOR SYSTEM PROVIDED AND INSTALLED BY TENANT GC	PER PROJECT MANUAL SECTION 087116	

##### SYSTEM DESCRIPTION:

DOORS ARE LOCKED AND UNLOCKED MANUALLY WITH A KEY. WHEN IN THE UNLOCKED POSITION THE AUTOMATIC OPERATOR SYSTEM IS TURNED ON AND OFF AT THE ELECTRICAL PANEL THROUGH NOVAR CONTROLS. THE INSIDE PUSH SWITCH AND OUTSIDE PUSH SWITCH ARE MOUNTED AS SHOWN ON THE DRAWINGS. BOTH LEAFS MUST REMAIN UNLOCKED DURING BUSINESS HOURS.

#### HW2-VESTIBULE

##### BY SHELL CONTRACTOR:

2 EA GEAR HINGE	PEMKO	DFM SLF HD1
4 EA KICK PLATE	ROCKWOOD	K1050 630
4 EA PUSH PLATE	ROCKWOOD	71C
2 EA PULL	ROCKWOOD	8P258 630
2 EA FLOOR STOP	TRIMCO	1214 626
2 EA DOOR BOTTOM	PEMKO	1809T0NB
1 SET GASKET	PEMKO	S88D
2 EA MEETING STILE GASKET	PEMKO	5025 ANB 96"
1 EA RISER DRAWING		
1 EA POINT TO POINT DRAWINGS		

LOW ENERGY AUTOMATIC DOOR OPERATOR SYSTEM PROVIDED AND INSTALLED BY TENANT GC PER PROJECT MANUAL SECTION 087116

#### HW3-STOREFRONT DOOR WITH ACCESS

##### BY SHELL CONTRACTOR:

3 EA HINGE	MCKINNEY	TA386 4.5 X 4.5 US320 NRP
1 EA ELECTRIC STRIKE	HES	9600 24VDC FAIL SECURE 630
1 EA EXIT DEVICE WITH ALARM	YALE	7100A X 630F 630 SNB
1 EA OUTSIDE ENTRY CYLINDER	BEST	1E74 C4 RP3 626
1 EA INSIDE ALARM CYLINDER	BEST	12E72 S2 RP 626
1 EA LATOGLIARD	PEMKO	3572S
1 EA CLOSER/STOP	NORTON	UNI7500 689
1 EA GASKET	PEMKO	S88D
1 EA DOOR BOTTOM	PEMKO	1809T0NB
1 EA THRESHOLD	PEMKO	171D
1 EA KICKPLATE	ROCKWOOD	K1050 10" 630 (INTERIOR)
1 EA RISER DIAGRAM		
1 EA POINT TO POINT DRAWING		

##### SYSTEM DESCRIPTION:

KEY ENTRY FROM EXTERIOR WILL NOT ACTIVATE THE ALARM SYSTEM. THE EXIT DEVICE CONTAINS AN INTERNAL HORN. WHEN THE TOUCHBAR IS DEPRESSED, THE HORN SOUNDS TO PROVIDE AN AUDIBLE MEANS OF SIGNALING THAT THE OPENING HAS BEEN VIOLATED. A DECAL THAT CAN BE APPLIED TO THE DOOR STATING "EMERGENCY EXIT ONLY. ALARM WILL SOUND" IS PROVIDED WITH THE EXIT DEVICE.

#### HW4-METAL DOOR WITH ACCESS

##### BY SHELL CONTRACTOR:

3 EA HINGE	MCKINNEY	TA386 4.5 X 4.5 630 NRP
1 EA ELECTRIC STRIKE	HES	9600 24VDC FAIL SECURE 630
1 EA EXIT DEVICE WITH ALARM	YALE	7100A X 630F 630 SNB
1 EA OUTSIDE ENTRY CYLINDER	BEST	1E74 C4 RP3 626
1 EA INSIDE ALARM CYLINDER	BEST	12E72 S2 RP 626
1 EA LATOGLIARD	PEMKO	3572S
1 EA CLOSER/STOP	NORTON	UNI7500 689
1 EA GASKET	PEMKO	S88D
1 EA DOOR BOTTOM	PEMKO	1809T0NB
1 EA THRESHOLD	PEMKO	171A
1 EA ARMOR PLATE	ROCKWOOD	K1050 30" 630 (INTERIOR)
1 EA VIEWER	TRIMCO	978 US26D
1 EA RISER DIAGRAM		
1 EA POINT TO POINT DRAWING		

##### SYSTEM DESCRIPTION:

KEY ENTRY FROM EXTERIOR WILL NOT ACTIVATE THE ALARM SYSTEM. THE EXIT DEVICE CONTAINS AN INTERNAL HORN. WHEN THE TOUCHBAR IS DEPRESSED, THE HORN SOUNDS TO PROVIDE AN AUDIBLE MEANS OF SIGNALING THAT THE OPENING HAS BEEN VIOLATED. A DECAL THAT CAN BE APPLIED TO THE DOOR STATING "EMERGENCY EXIT ONLY. ALARM WILL SOUND" IS PROVIDED WITH THE EXIT DEVICE.

#### HW5-EGRESS ONLY

##### BY SHELL CONTRACTOR:

3 EA HINGE	MCKINNEY	TA386 4.5 X 4.5 630 NRP
1 EA EXIT DEVICE WITH ALARM	YALE	7100A X 630F 630 SNB
1 EA INSIDE CYLINDER	BEST	12E72 S2 RP 626
1 EA LATOGLIARD	PEMKO	3572S
1 EA CLOSER/STOP	NORTON	UNI7500 689
1 EA GASKET	PEMKO	S88D
1 EA DOOR BOTTOM	PEMKO	1809T0NB
1 EA THRESHOLD	PEMKO	171A
1 EA KICK PLATE	ROCKWOOD	K1050 10" 630 (INTERIOR)
2 EA VIEWER	TRIMCO	978 US26D

##### SYSTEM DESCRIPTION:

NO RE-ENTRY FROM THE EXTERIOR SIDE OF THE DOOR. THE EXIT DEVICE CONTAINS AN INTERNAL HORN. WHEN THE TOUCHBAR IS DEPRESSED, THE HORN SOUNDS TO PROVIDE AN AUDIBLE MEANS OF SIGNALING THAT THE OPENING HAS BEEN VIOLATED. A DECAL THAT CAN BE APPLIED TO THE DOOR STATING "EMERGENCY EXIT ONLY. ALARM WILL SOUND" IS PROVIDED WITH THE EXIT DEVICE.

#### HW6-OVERHEAD DOOR (MOTORIZED)

1 EA SURFACE MOUNTED CONTROL STATION	IMTIX	3BLM-BC
--------------------------------------	-------	---------

USE REI PREFERRED VENDOR - NO SUBSTITUTIONS

#### HW10-COMBO LOCK

##### BY SHELL CONTRACTOR:

3 EA HINGES	MCKINNEY	TA714 4.5 X 4.5 652
1 EA DEADLOCK	KABA	SIMPLEX 302 (BWL-260-41)
1 EA CLOSER	NORTON	7500 689 SNB
2 EA KICKPLATE	ROCKWOOD	K1050 10" 630
1 EA WALL STOP*	TRIMCO	1270CV 626 (AT DOORS 145)
3 EA SILENCERS		

\*WHERE WALL STOPS CAN NOT BE USED, OMIT WALL STOP AND REVISE CLOSER TO: CLOSER/STOP - NORTON - UNI7500 689 SNB

#### HW11-KEY SECURED-CLASSROOM

##### BY SHELL CONTRACTOR:

3 EA HINGES	MCKINNEY	TA714 4.5 X 4.5 652
1 EA LOCKSET	BEST	9K37R15D S3 626
1 EA CLOSER	NORTON	7500 689 SNB
2 EA KICKPLATE	ROCKWOOD	K1050 10" 630
1 EA WALL STOP*	TRIMCO	1270CV 626 (AT DOORS 170)
3 EA SILENCERS		

\*WHERE WALL STOPS CAN NOT BE USED, OMIT WALL STOP AND REVISE CLOSER TO: CLOSER/STOP - NORTON - UNI7500 689 SNB

#### HW12-KEY SECURED-STOREROOM

##### BY SHELL CONTRACTOR:

3 EA HINGES	MCKINNEY	TA714 4.5 X 4.5 652
1 EA LOCKSET	BEST	9K37R15D S3 626
1 EA CLOSER	NORTON	7500 689 SNB
2 EA KICKPLATE	ROCKWOOD	K1050 10" 630
1 EA WALL STOP*	TRIMCO	1270CV 626 (AT DOORS 165)
3 EA SILENCERS		

\*WHERE WALL STOPS CAN NOT BE USED, OMIT WALL STOP AND REVISE CLOSER TO: CLOSER/STOP - NORTON - UNI7500 689 SNB

#### DOOR HARDWARE SCHEDULE

#### HW13-FITTING ROOM

3 EA SPRING HINGES*	BOMMER	LB4310C-450-630
1 EA DEADBOLT W/ VACANCY INDICATOR	HANGER	3770 WITH INDICATOR
1 EA WALL STOP	RIMCO	1270CV 626 (AT DOORS 122, 126, 127)
1 EA OVERHEAD STOP	RIXSON	9-536 630 SNB (AT DOORS 121)
3 EA SILENCERS		

CONFIRM HARDWARE MODIFICATION FOR BEST CORE AT DEADBOLT WITH REI CPM  
\*SET HINGES TO CLOSE BUT NOT LATCH THE DOOR

#### HW14-DOUBLE-ACTING TO STORAGE

USE REI PREFERRED VENDOR - NO SUBSTITUTIONS  
PROVIDE SIGN STATING USE CAUTION WHEN OPENING DOORS\* TO RETAIL SIDE OF DOOR  
ALL HARDWARE IS BY THE DOOR AND FRAME MANUFACTURER

#### HW15-MULTI-OCCUPANT RESTROOM

3 EA HINGES	MCKINNEY	TA714 4.5 X 4.5 652
1 EA PUSH PLATE	TRIMCO	71C
1 EA DOOR PULL WITH PLATE	TRIMCO	1014-9B 630 CYL
1 EA CLOSER	NORTON	7500 689 SNB
2 EA KICKPLATE	ROCKWOOD	K1050 10" 630
1 EA FOOT PULL	TRIMCO	FP1230 630
1 EA WALL STOP	TRIMCO	1270CV 626
3 EA SILENCERS		

#### HW16-SINGLE-OCCUPANT RESTROOM

3 EA HINGES	MCKINNEY	TA714 4.5 X 4.5 652
1 EA DEADBOLT/INDICATOR	SCHLAGE	B571 626
1 EA PUSH PLATE	ROCKWOOD	71C (CUT FOR CYLINDER)
1 EA DOOR PULL WITH PLATE	TRIMCO	1014-9B 630 CYL
1 EA CLOSER	NORTON	7500 689 SNB
2 EA KICKPLATE	ROCKWOOD	K1050 10" 630
1 EA WALL STOP	TRIMCO	1270CV 626
3 EA SILENCERS		

#### HW17-SHOWER

3 EA SPRING HINGES*	BOMMER	LB4310C-450-630
1 EA DEADBOLT/INDICATOR	SCHLAGE	B571 626
1 EA PUSH PLATE	ROCKWOOD	71C (CUT FOR CYLINDER)
1 EA DOOR PULL WITH PLATE	TRIMCO	1014-9B 630 CYL
1 EA THRESHOLD	PEMKO	169A
2 EA KICKPLATE	ROCKWOOD	K1050 10" 630
1 EA WALL STOP	TRIMCO	1270CV 626
3 EA SILENCERS		

\*SET HINGES TO CLOSE BUT NOT LATCH THE DOOR.

#### HW18-BIKE ASSEMBLY

6 EA HINGES	MCKINNEY	TA714 4.5 X 4.5 652
1 EA LOCKSET	BEST	9K37R15D S3 626
2 EA FLUSH BOLT	TRIMCO	3913-12" 626 (AT INACTIVE LEAF)
1 EA DUST PROOF STRIKE	TRIMCO	3911 626 (AT INACTIVE LEAF)
2 EA OVERHEAD STOP*	RIXSON	9-536 630
4 EA KICKPLATE	ROCKWOOD	K1050 10" 630
6 EA SILENCERS		

\*SET FOR 90 DEGREE OPENING WHEN SHELVING IS SHOWN LIMITING THE DOOR OPENING DEGREE

#### HW19-COMMUNITY ROOM

6 EA HINGES	MCKINNEY	TA714 4.5 X 4.5 652
1 EA LOCKSET	BEST	9K37R15D S3 626
2 EA CLOSER/STOP/HOLD OPEN	NORTON	CLP7500T 689 SNB
2 EA FLUSH BOLT	TRIMCO	3913-12" 626 (AT INACTIVE LEAF)
1 EA DUST PROOF STRIKE	TRIMCO	3911 US26D (AT INACTIVE LEAF)
4 EA KICKPLATE	ROCKWOOD	K1050 10" 630
6 EA SILENCERS		

#### HW40-DOUBLE METAL DOOR WITH ACCESS

##### BY SHELL CONTRACTOR:

4 EA HINGES	MCKINNEY	TA386 4.5 X 4.5 US320 NRP
1 EA ELECTRIC STRIKE	HES	9600 24VDC FAIL SECURE 630
1 EA REMOVABLE MULLION	YALE	M200
1 EA EXIT DEVICE WITH ALARM	YALE	7100A X 630F 630 SNB
2 EA OUTSIDE ENTRY CYLINDER	BEST	1E74 C4 RP3 626
1 EA INSIDE ALARM CYLINDER	BEST	12E72 S2 RP 626
1 EA LATOGLIARD	PEMKO	3572S
2 EA CLOSER/STOP	NORTON	UNI7500 689
1 EA GASKET	PEMKO	S88D
2 EA DOOR BOTTOM	PEMKO	1809T0NB
1 EA THRESHOLD	PEMKO	171A
2 EA ARMOR PLATE	ROCKWOOD	K1050 30" 630
2 EA VIEWER	TRIMCO	978 US26D

##### SYSTEM DESCRIPTION:

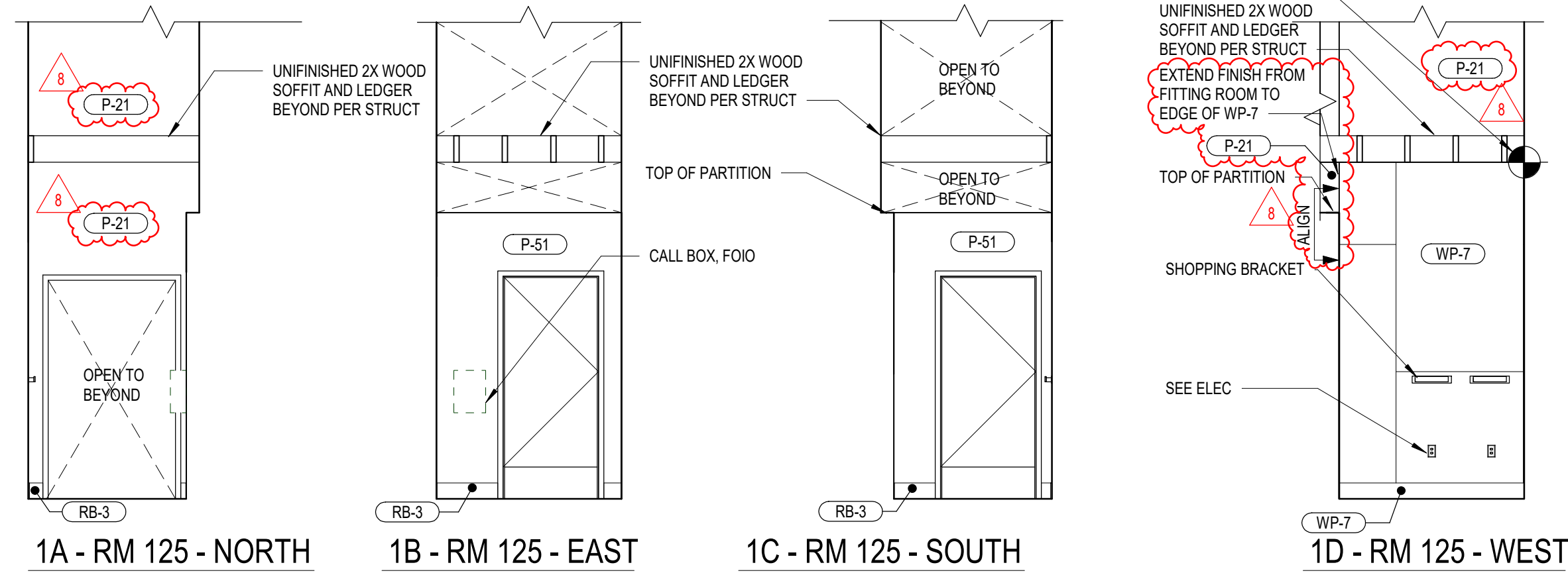
KEY ENTRY FROM EXTERIOR WILL NOT ACTIVATE THE ALARM SYSTEM. THE EXIT DEVICE CONTAINS AN INTERNAL HORN. WHEN THE TOUCHBAR IS DEPRESSED, THE HORN SOUNDS TO PROVIDE AN AUDIBLE MEANS OF SIGNALING THAT THE OPENING HAS BEEN VIOLATED. A DECAL THAT CAN BE APPLIED TO THE DOOR STATING "EMERGENCY EXIT ONLY. ALARM WILL SOUND" IS PROVIDED WITH THE EXIT DEVICE.

#### DOOR TYPES

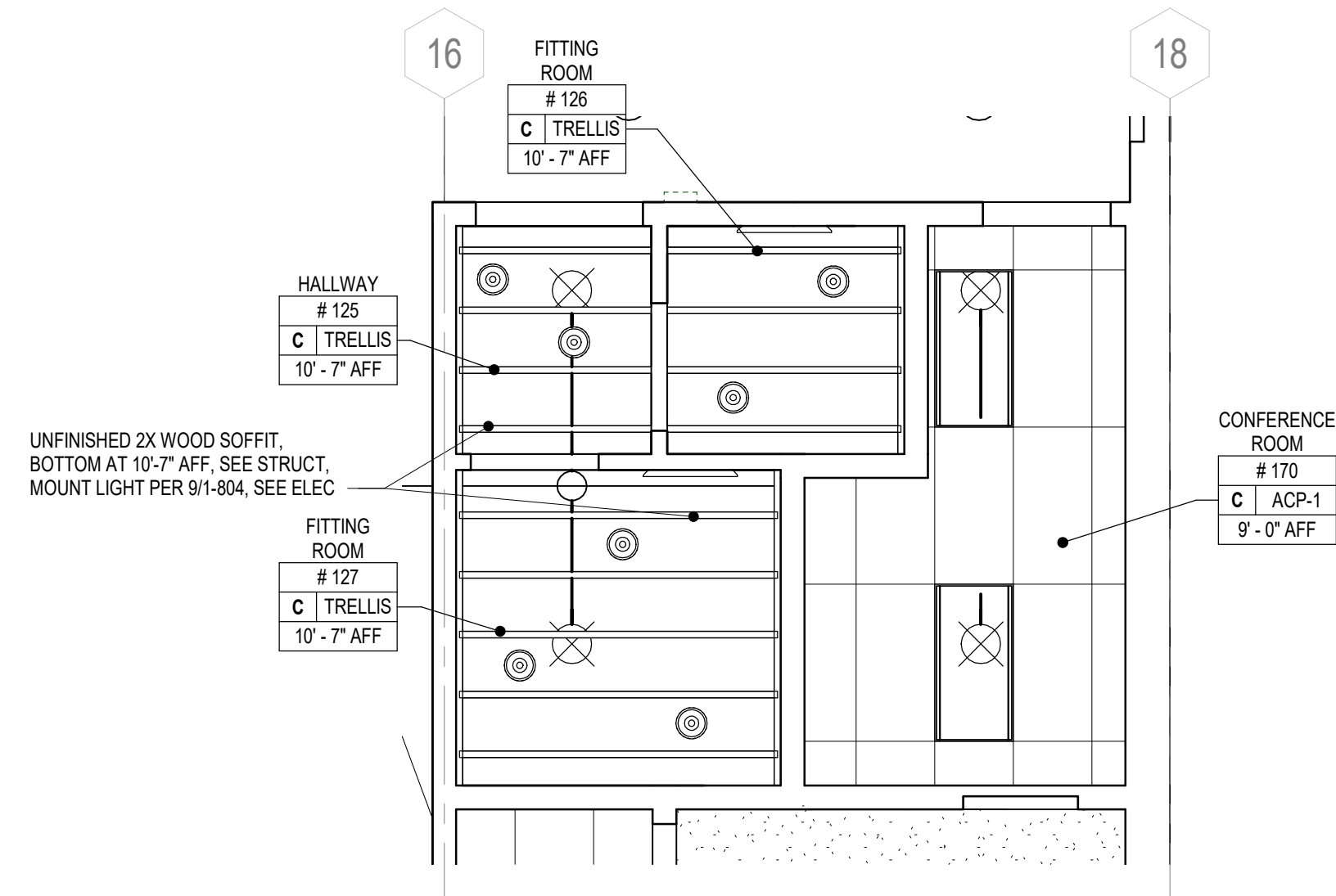




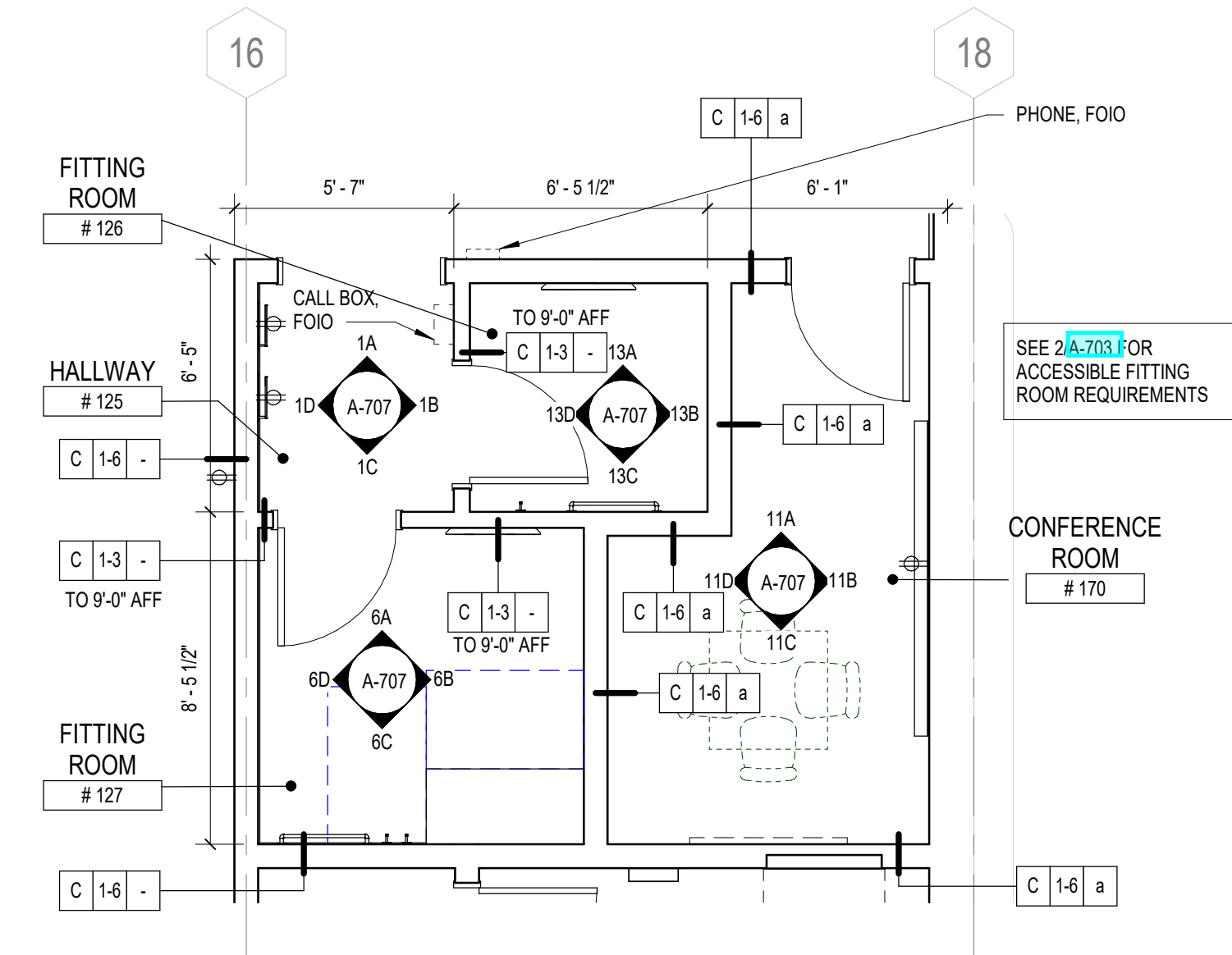




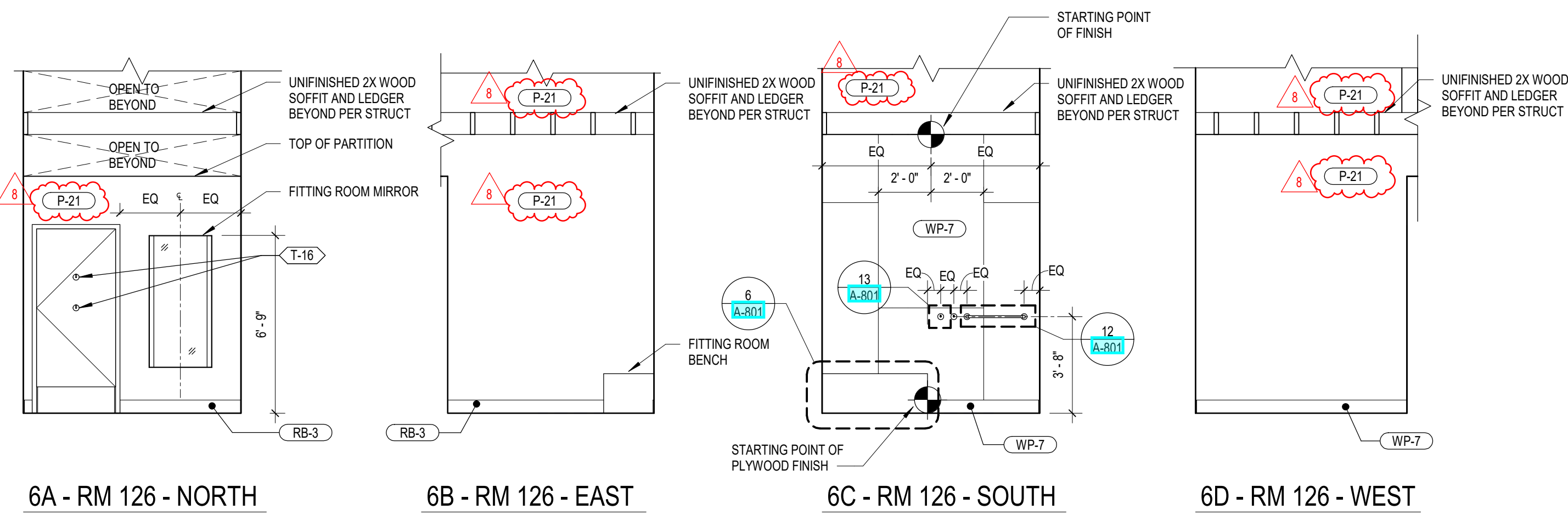
1 HALLWAY ROOM 125 - ELEVATIONS  
SCALE: 1/4" = 1'-0"



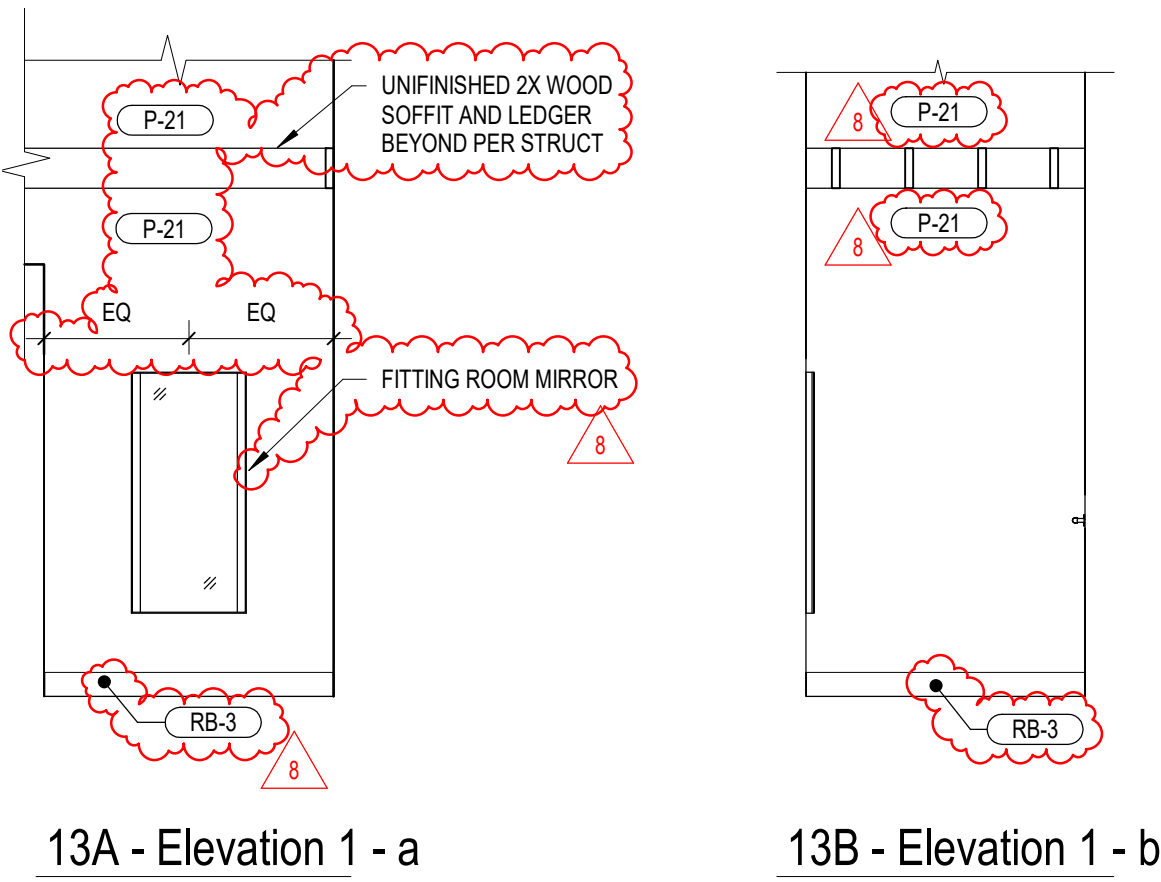
3 ENLARGED FITTING ROOM & CONFERENCE ROOM RCP  
SCALE: 1/4" = 1'-0"



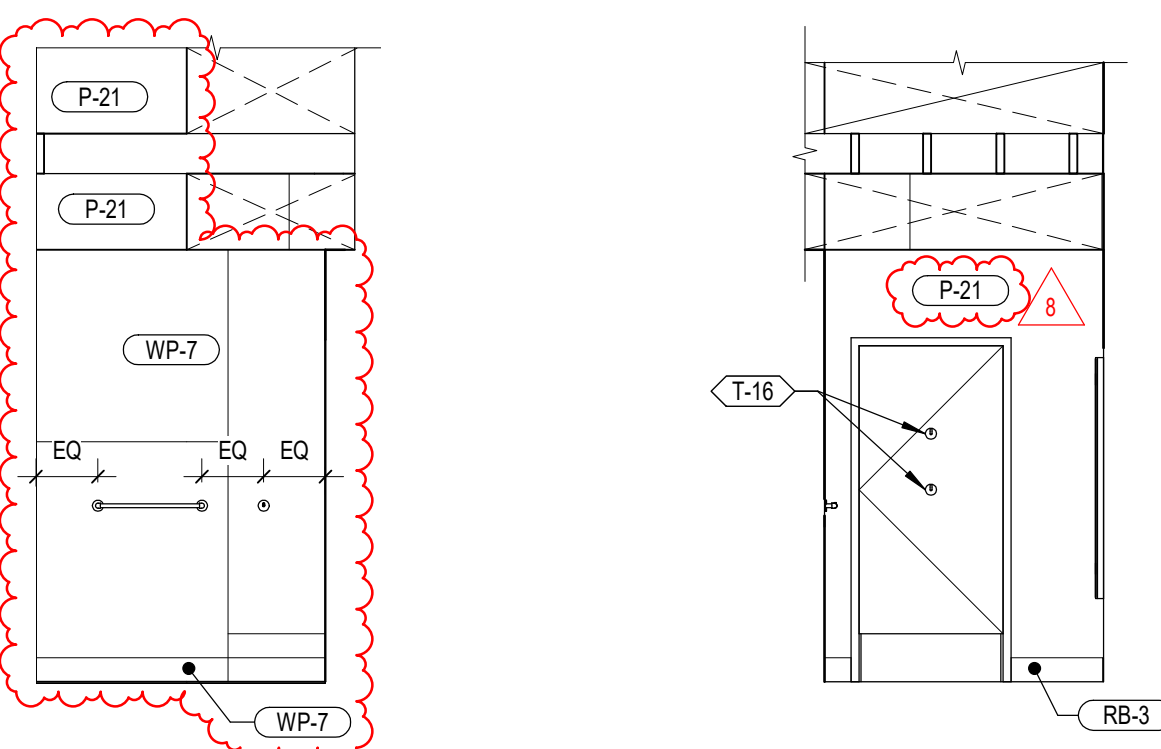
5 ENLARGED FITTING ROOM & CONFERENCE ROOM PLAN  
SCALE: 1/4" = 1'-0"



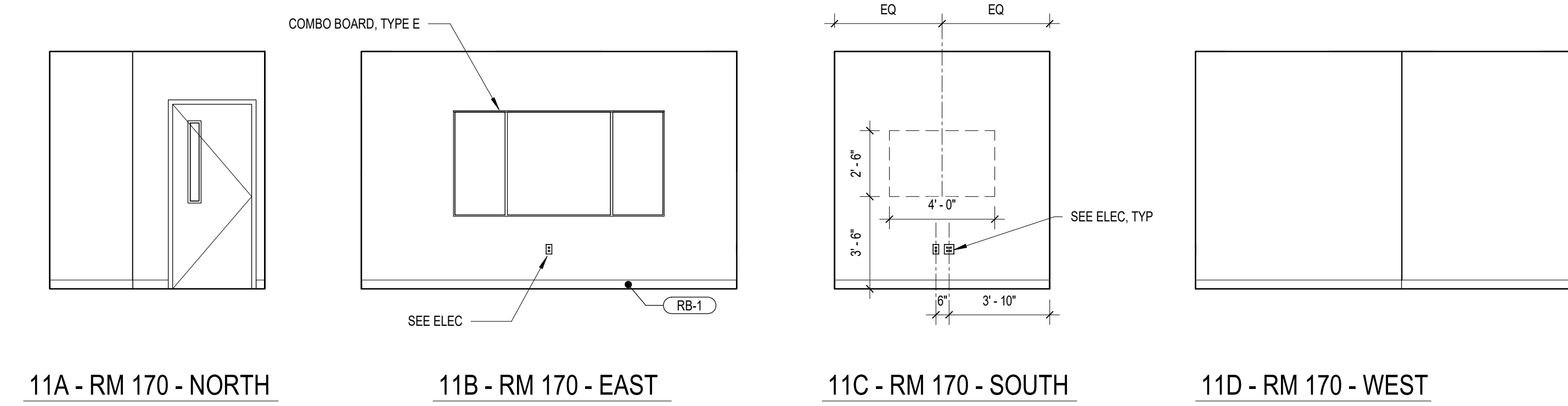
6 FITTING ROOM 127 - ELEVATIONS  
SCALE: 1/4" = 1'-0"



13A - Elevation 1 - a  
13B - Elevation 1 - b

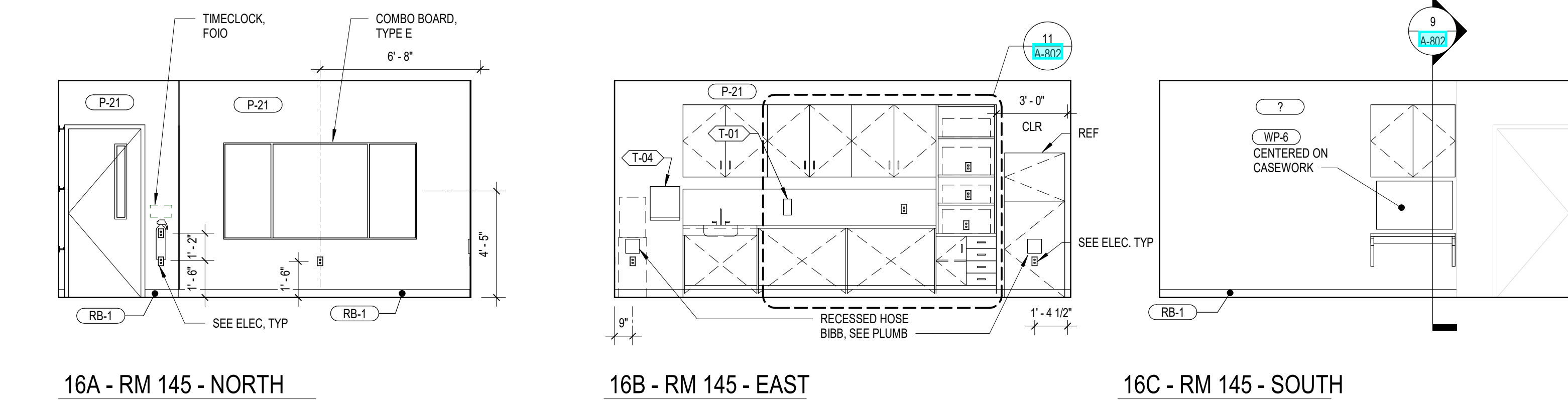


13C - Elevation 1 - c  
13D - Elevation 1 - d

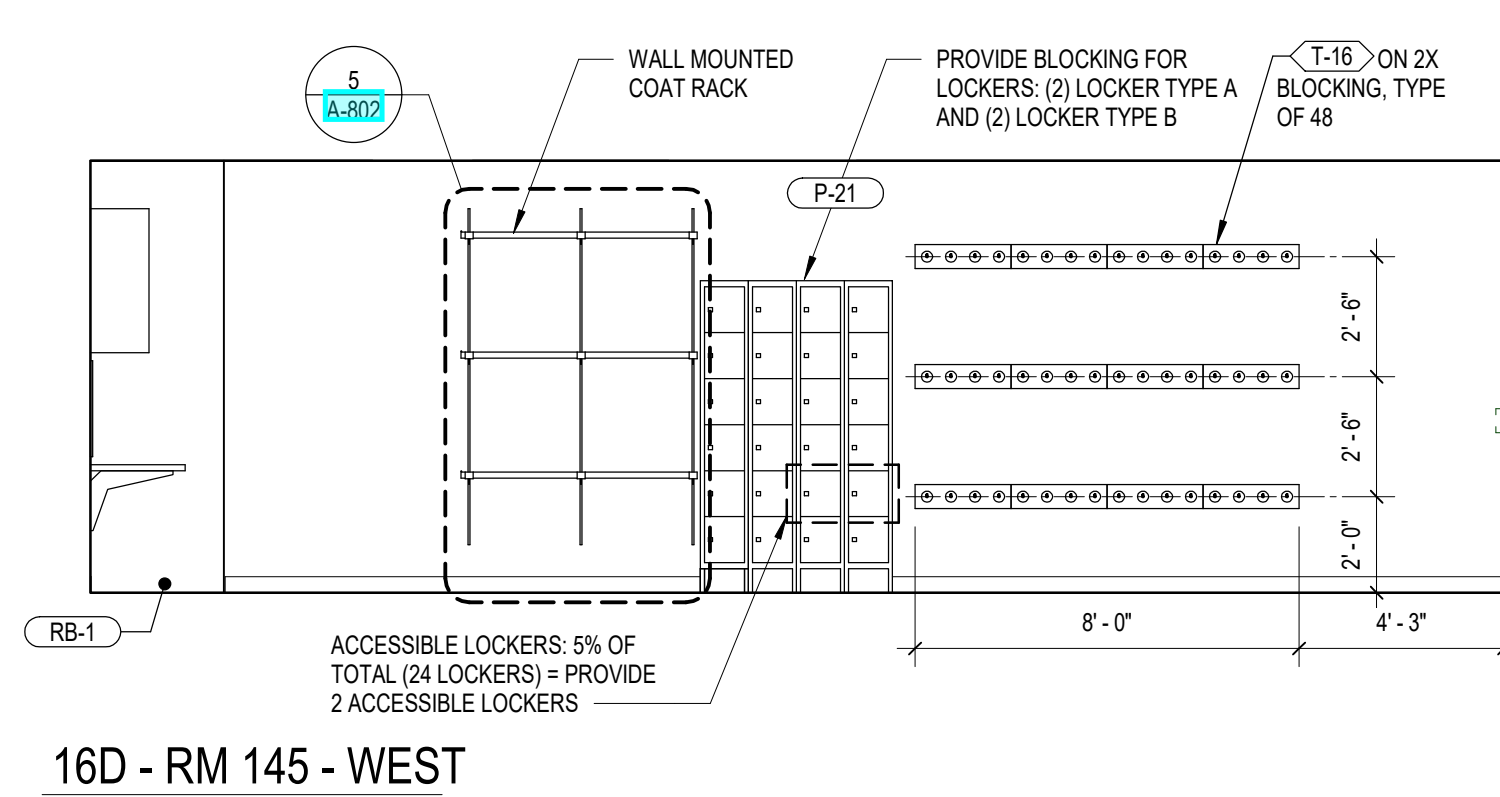


11 CONFERENCE ROOM 170 - ELEVATIONS  
SCALE: 1/4" = 1'-0"

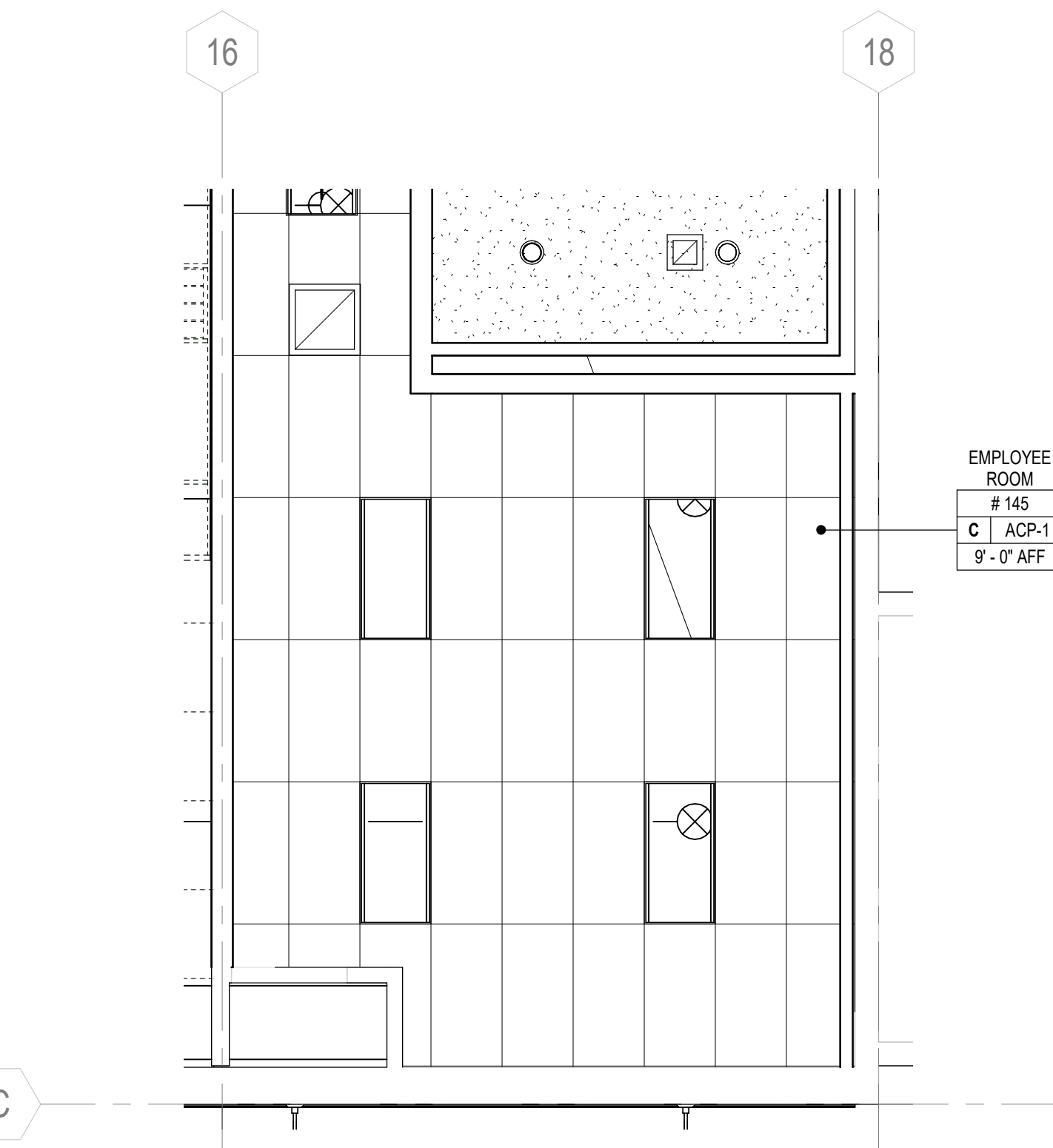
6 FITTING ROOM 126 - ELEVATIONS  
SCALE: 1/4" = 1'-0"



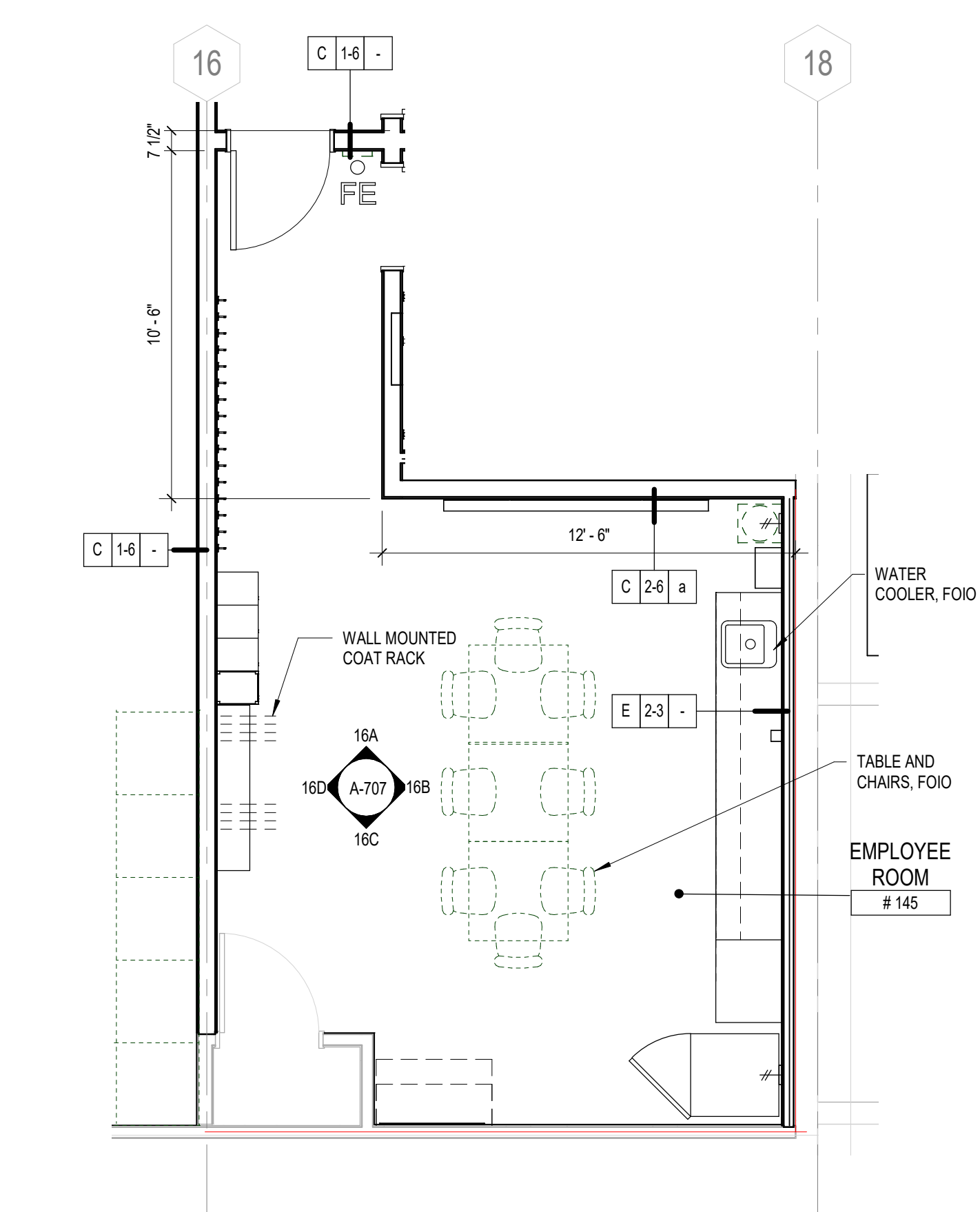
16 EMPLOYEE ROOM 145 - ELEVATIONS  
SCALE: 1/4" = 1'-0"



16D - RM 145 - WEST

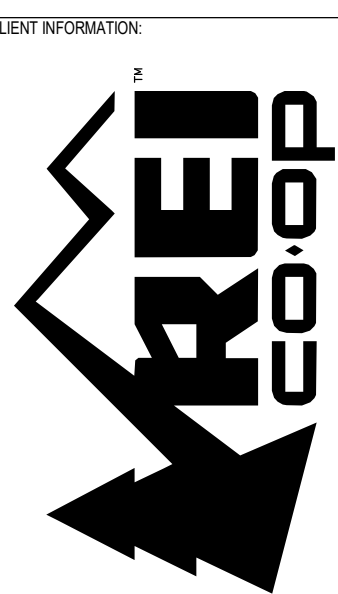


15 ENLARGED FITTING ROOM, EMPLOYEE, & SHOWER RCP  
SCALE: 1/4" = 1'-0"



19 ENLARGED FITTING ROOM, EMPLOYEE, & SHOWER PLAN Copy 1  
SCALE: 1/4" = 1'-0"

#235



CALLISONRTKL

CONSULTANT INFORMATION

PROJECT INFORMATION

REI-GLENWOOD SPRINGS  
3216 S. GLEN AVENUE  
GLENWOOD SPRINGS,  
CO. 81601

SIGNATURE/SEAL

REV	DATE	DESCRIPTION
1	11/05/21	PERMIT SET
2	12/20/21	BULLETIN 1
3	01/14/22	BULLETIN 2
4	03/23/22	BULLETIN 3
5	03/23/22	BULLETIN 4
6	03/23/22	BULLETIN 5
7	03/23/22	BULLETIN 6
8	03/23/22	BULLETIN 7
9	03/23/22	BULLETIN 8

SHEET TITLE

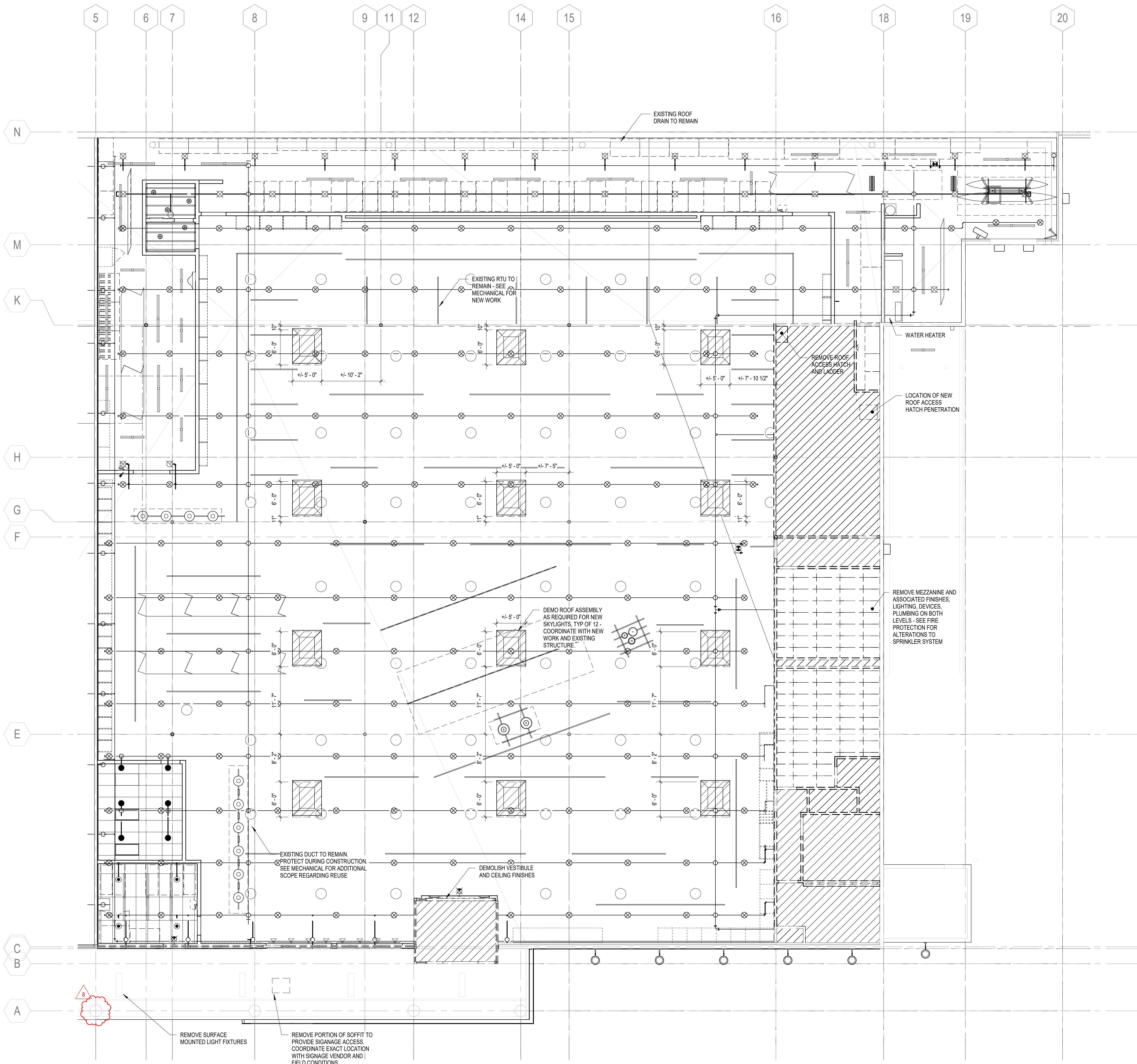
ENLARGED FITTING ROOM,  
EMPLOYEE & CONFERENCE  
PLANS AND ELEVATIONS

A-707









1 DEMO CEILING PLAN  
SCALE: 1/8" = 1'-0"

CLIENT STORE NUMBER  
**#235**

CLIENT INFORMATION  
**REI co.op**

ARCHITECT INFORMATION  
**CALLISONRTKL™**  
CallisonRTKL, Inc.  
1400 9th Ave  
Seattle, WA 98101  
006-132864.81

CONSULTANT INFORMATION

PROJECT INFORMATION  
**REI-GLENWOOD SPRINGS**  
3216 S. GLEN AVENUE  
GLENWOOD SPRINGS,  
CO. 81601

SIGNATURE/SEAL

ISSUING SOURCE LOG  
REV DATE DESCRIPTION  
2 12/20/21 BULLETIN 2  
01/14/22 CONSTRUCTION SET  
8 03/23/22 BULLETIN 8

SHEET TITLE  
**DEMO REFLECTED CEILING PLAN**

SHEET NUMBER  
**AD-141**