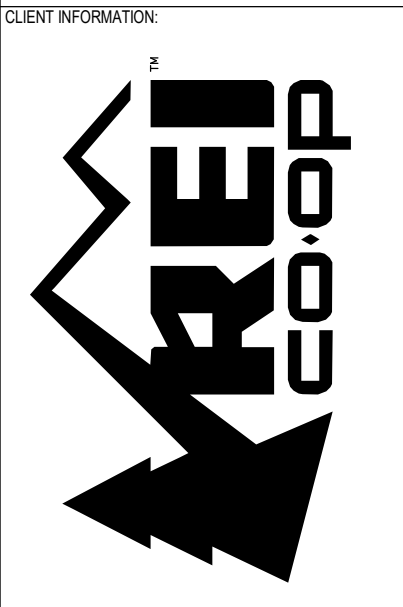


1. CENTER ALL CEILING GRIDS AND LIGHTS WITHIN ROOMS (TYP.) UN.
2. ALL HVAC EQUIPMENT SHOWN FOR COORDINATION PURPOSES ONLY - SEE MEP DRAWINGS FOR EQUIPMENT SPECIFICATIONS.
3. REFER TO ELEC DRAWINGS FOR ALL MOUNTING HEIGHTS OF LIGHT FIXTURES.
4. SEE A.207 FOR LIGHT FIXTURE SUPPORT DETAILS AT CEILING GRID.
5. LOCATE DUCTWORK AS HIGH AS POSSIBLE (SEE MECH). BOTTOM OF DUCTWORK SHOULD ALWAYS BE HIGHER THAN BOTTOM OF LIGHTS. VERIFY WITH ELEC. NOTIFY ARCHITECT IF OBSTRUCTIONS OCCUR.
6. IN ROOMS WITH ACP CEILING, PROVIDE CAULK BETWEEN PERIMETER CEILING GRID AND WALL.
7. ONLY USE UNFINISHED GALVANIZED HVAC DUCT WORK. ONLY USE FACTORY FINISHED FIRE SUPPRESSION EQUIPMENT INSIDE THE SPACE.
8. ONLY USE PRE-GALVANIZED UNISTRUT FINISH (PG) FOR HANGING TRACK, TYP.
9. LOCATE AND CONFIRM DIMENSIONS AT BKE AND BOAT LIFTS WITH REI PRIOR TO SHIPMENT OF ITEMS.



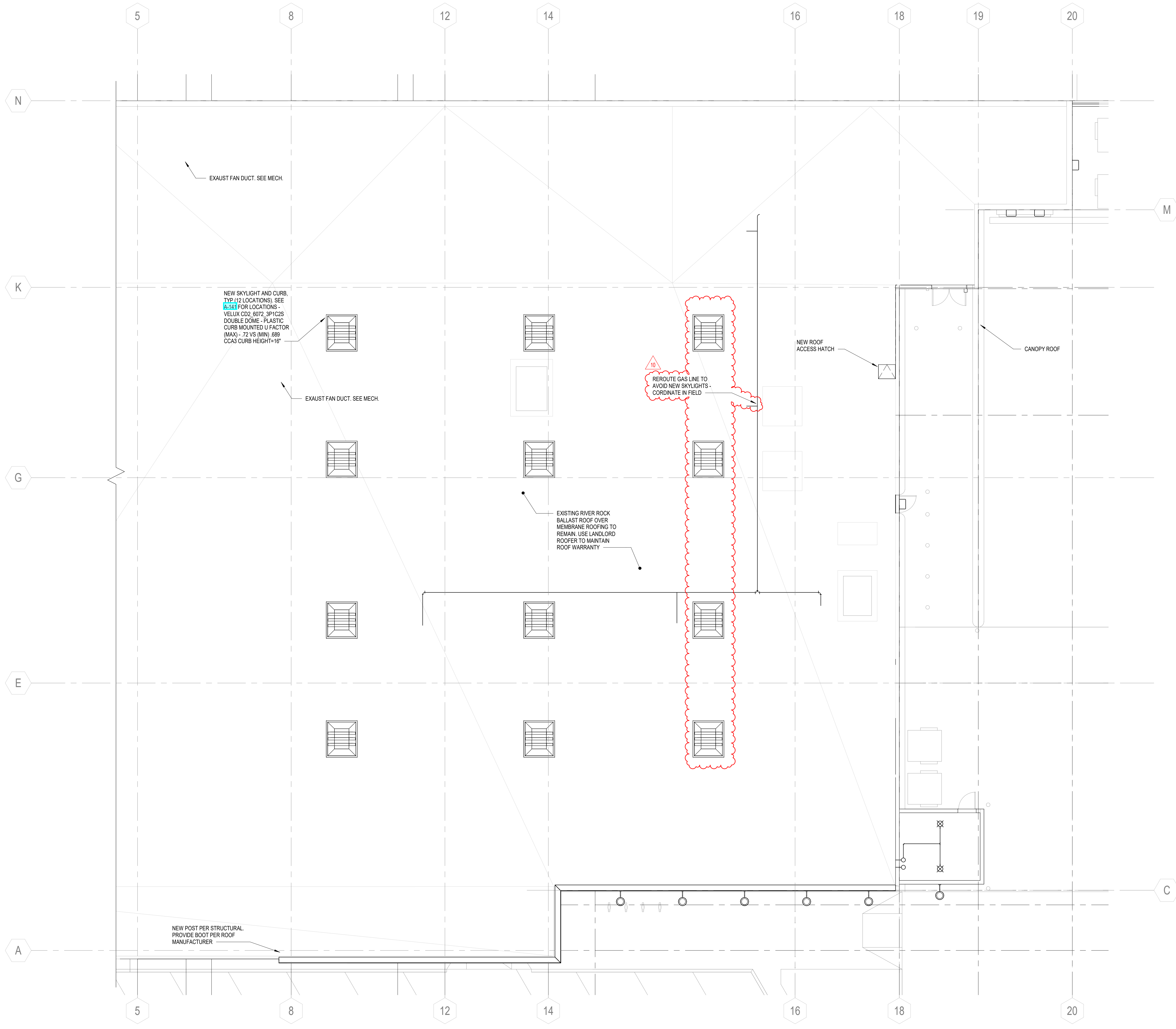
PROJECT INFORMATION  
**CALLISONRTKL**  
CallisonRTKL, Inc.  
1400 Pike Ave  
Seattle, WA 98101  
006-132864-81

- SHEET LEGEND**
- DISPLAY FIXTURES BELOW (FOO)
  - LIGHTING TRACK
  - TRAFFIC AISLE BELOW
  - ⊗ SUPPLY
  - ⊠ RETURN
  - ⊞ HVAC DROP
  - ▨ NEW DUCTWORK SHOWN POCHED FOR CLARITY
  - + ⊗ ⊗ EXIT SIGNAGE
  - ▧ ACP CEILING
  - ▨ PAINTED GYP CEILING
- LIGHT FIXTURES**
- ⊙ SURFACE MOUNTED, SEE ELEC
  - ▽ TRACK MOUNTED, SEE ELEC
  - ▬ SUSPENDED, SEE ELEC
  - ⊙ WALL MOUNTED, SEE ELEC

PROJECT INFORMATION  
**REI-GLENWOOD SPRINGS**  
3216 S. GLEN AVENUE  
GLENWOOD SPRINGS,  
CO, 81601

SHIPPING RESOURCE LOG

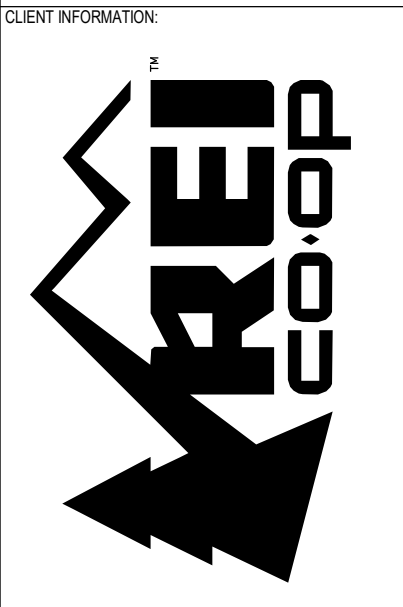
REV	DATE	DESCRIPTION
1	11/05/21	PERMIT SET
2	12/20/21	BULLETN 2
3	01/14/22	BULLETN 3
4	01/14/22	CONSTRUCTION SET
4	02/11/22	BULLETN 4
7	03/18/22	BULLETN 7
8	03/23/22	BULLETN 8
10	04/22/22	BULLETN 10



**SHEET NOTES**

1. LOCATE RTU'S ON EXIST CURBS PER DIMENSIONS INDICATED. GC TO CONFIRM LOCATIONS OF EXIST RTU CURBS AND NOTIFY ARCHITECT FOR RESOLUTION OF DISCREPANCIES PRIOR TO CONSTRUCTION.

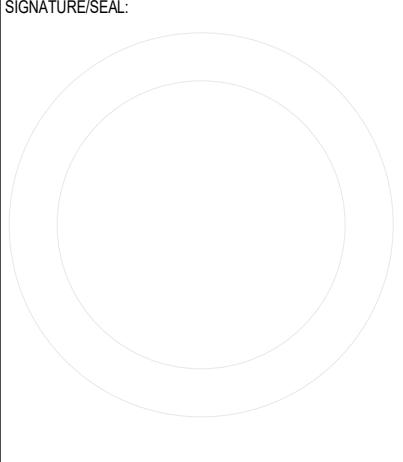
CLIENT WORK NUMBER  
**#235**



ARCHITECT INFORMATION  
**CALLISONRTKL**  
CallisonRTKL, Inc.  
1400 9th Ave  
Seattle, WA 98101  
006-132964-81

CONSULTANT INFORMATION

PROJECT INFORMATION  
**REI-GLENWOOD SPRINGS**  
3216 S. GLEN AVENUE  
GLENWOOD SPRINGS,  
CO, 81601



ISSUING SEQUENCE LOG

REV	DATE	DESCRIPTION
1	11/05/21	PERMIT SET
2	12/20/21	BULLETN 2
7	03/16/22	CONSTRUCTION SET
10	04/22/22	BULLETN 10

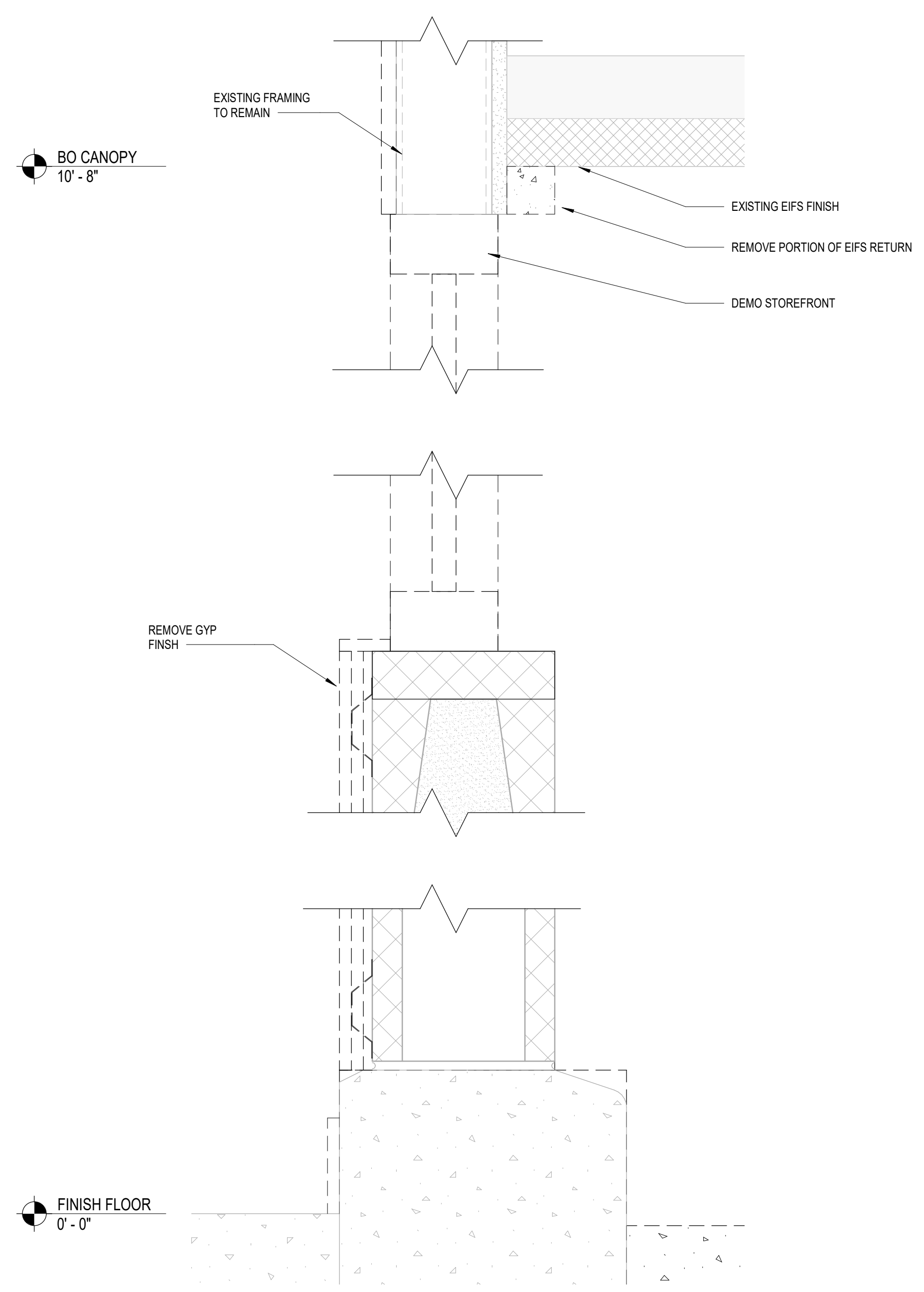
**SHEET LEGEND**

SCALE: 1/8" = 1'-0"

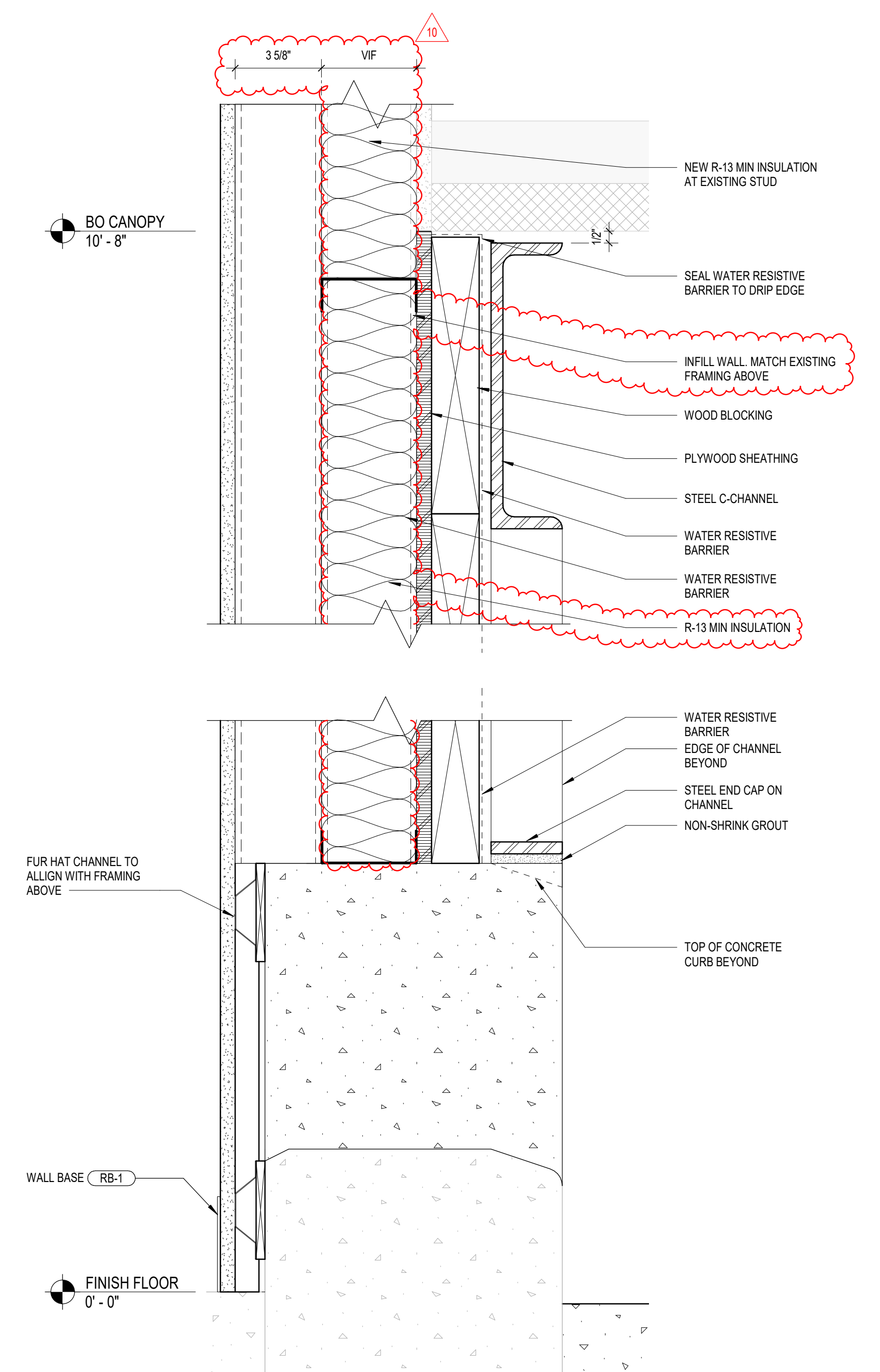
TRUE NORTH

**1** ROOF PLAN  
SCALE: 1/8" = 1'-0"

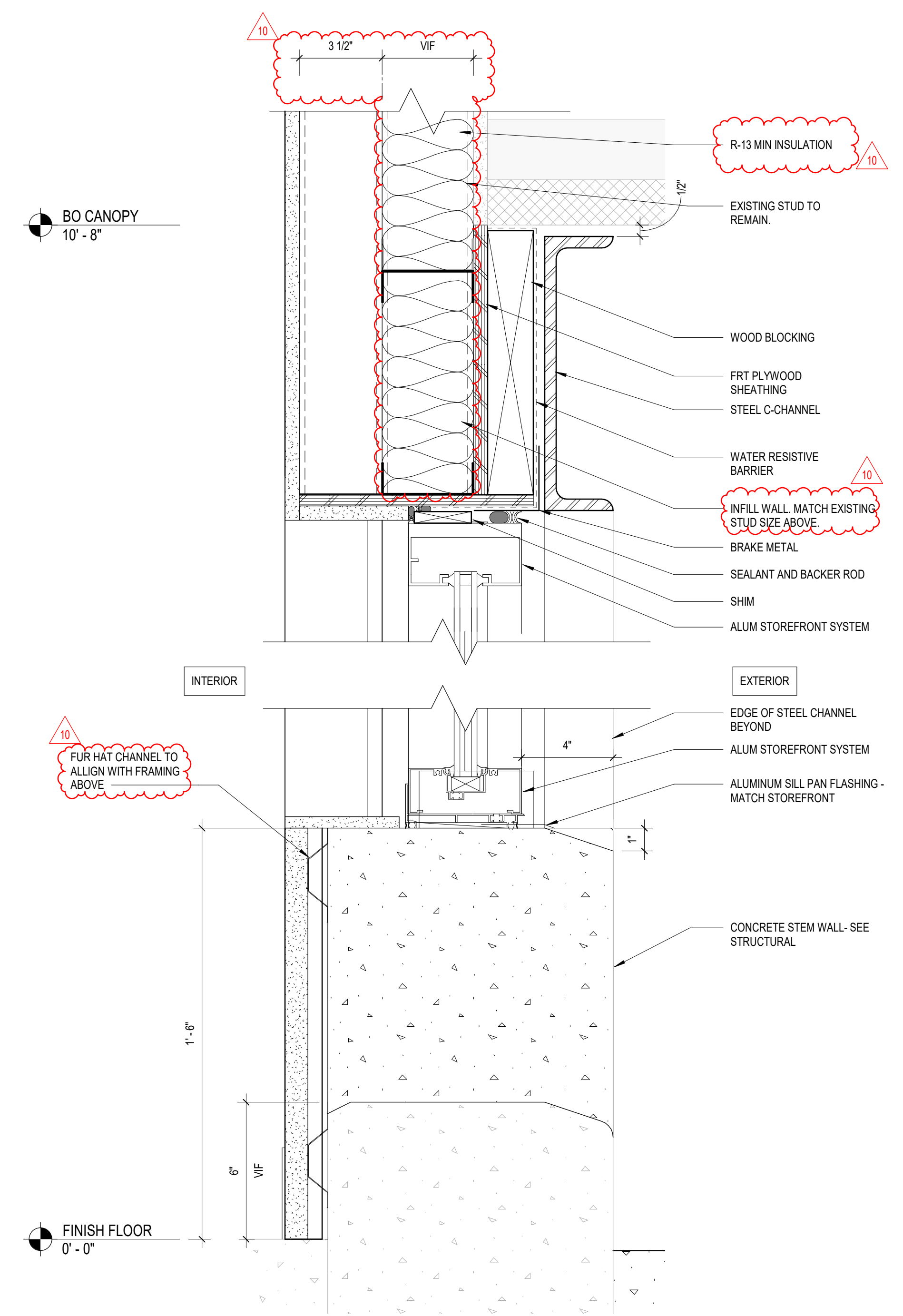
SHEET NUMBER  
**A-151**



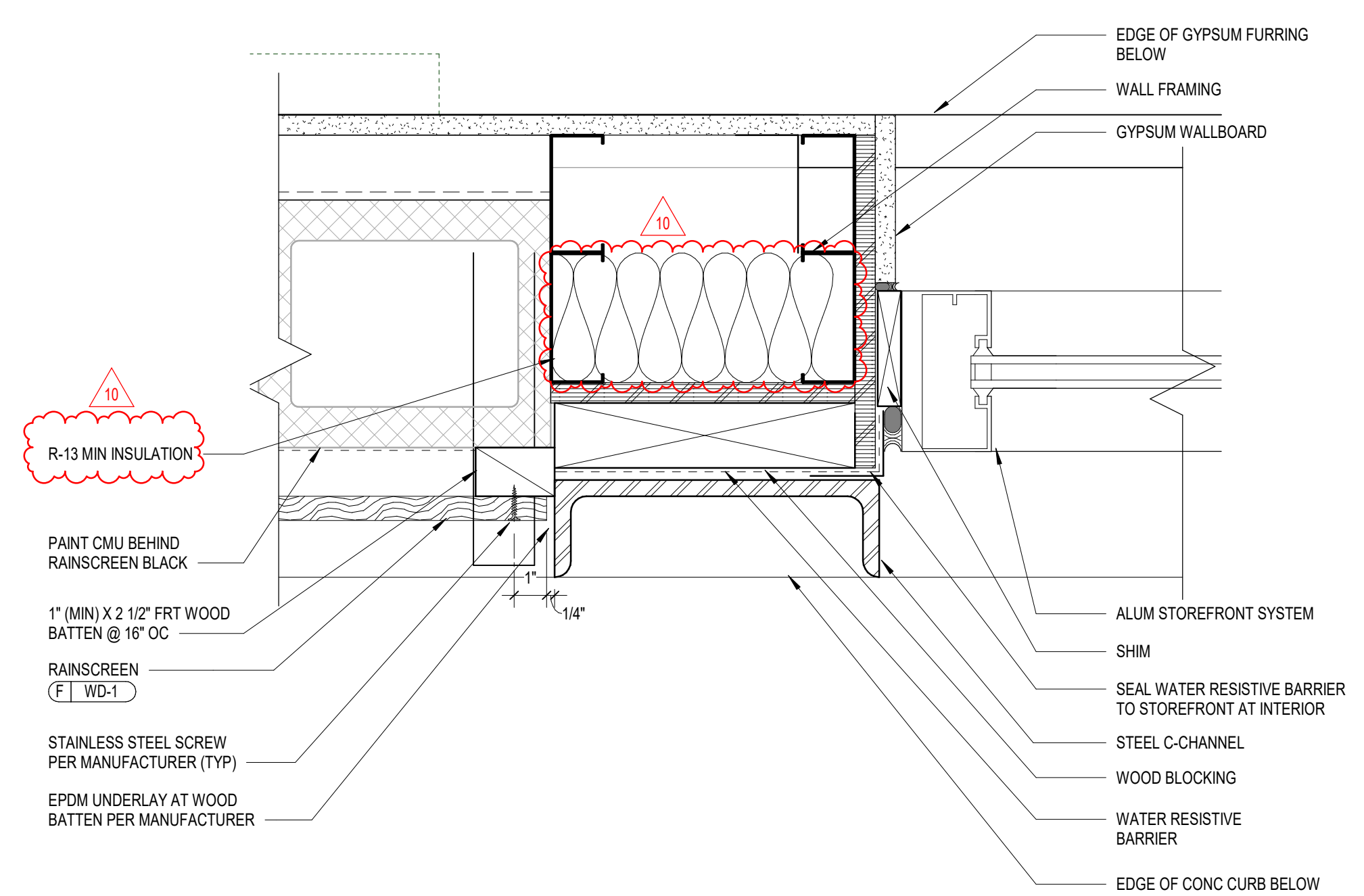
1 DEMO - STOREFRONT WALL SECTION  
3" = 1'-0"



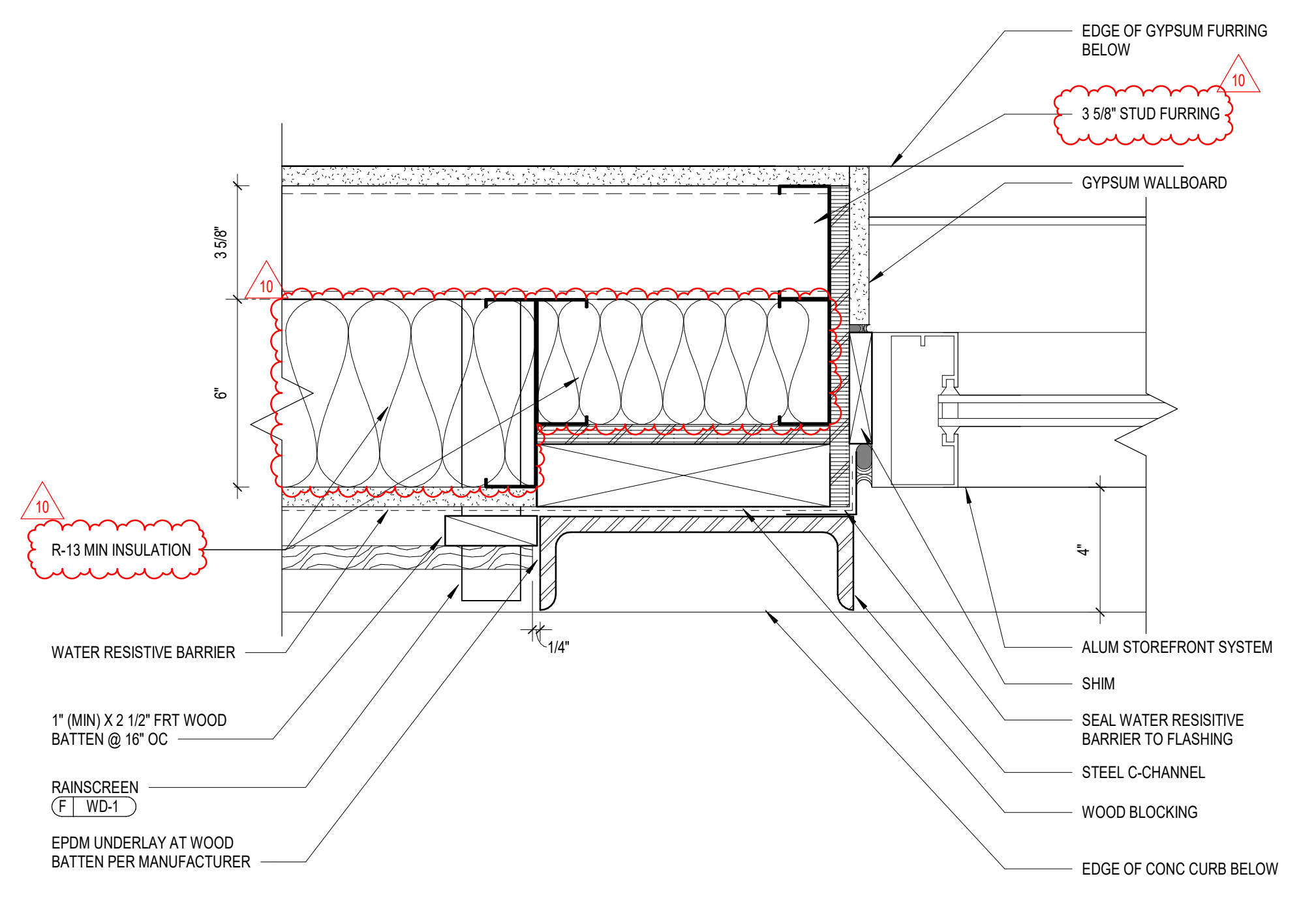
2 CHANNEL AT CONCRETE CURB  
3" = 1'-0"



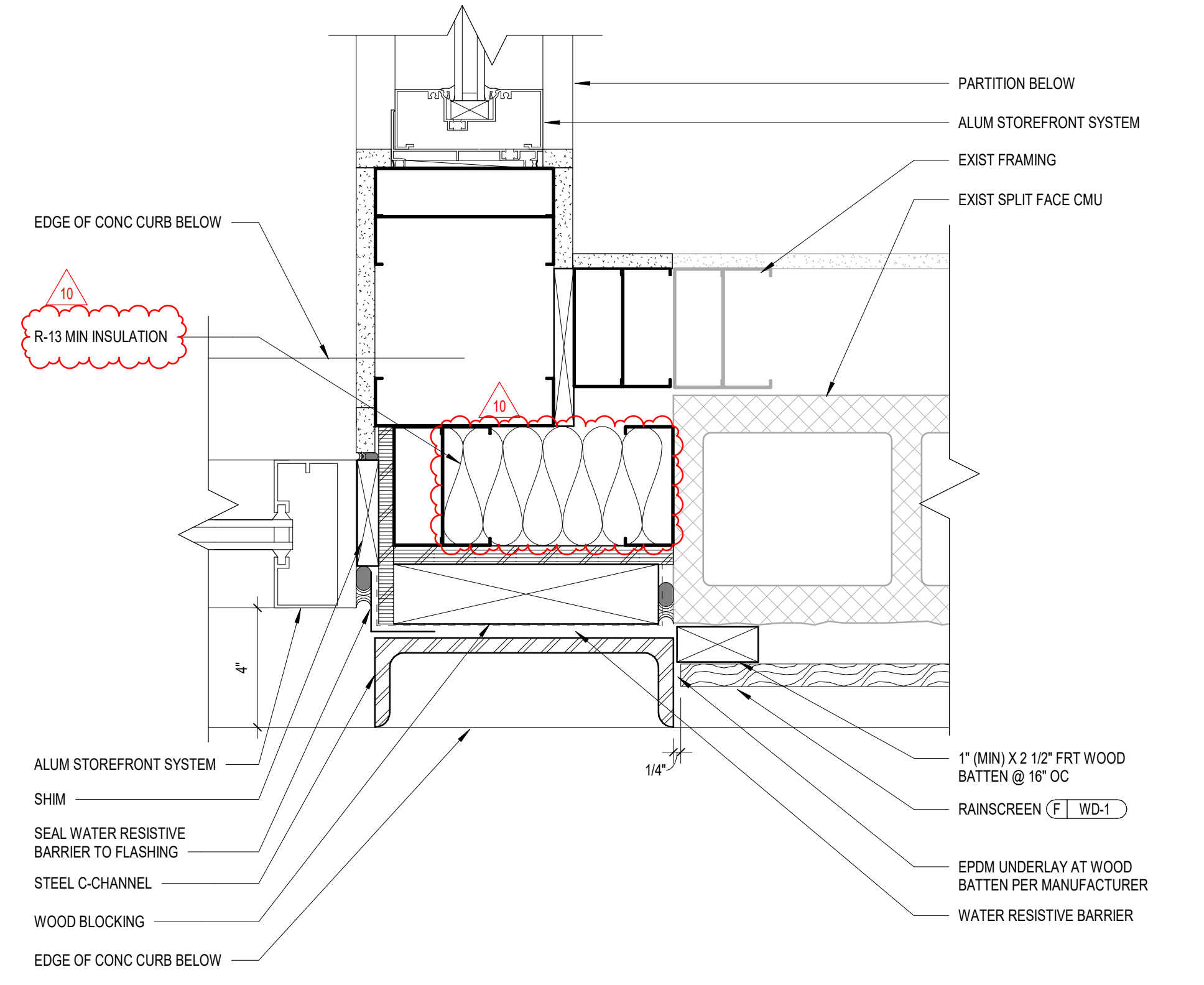
3 CHANNEL AT STOREFRONT WITH CONCRETE CURB  
3" = 1'-0"



4 STOREFRONT JAMB DETAIL AT CMU  
3" = 1'-0"

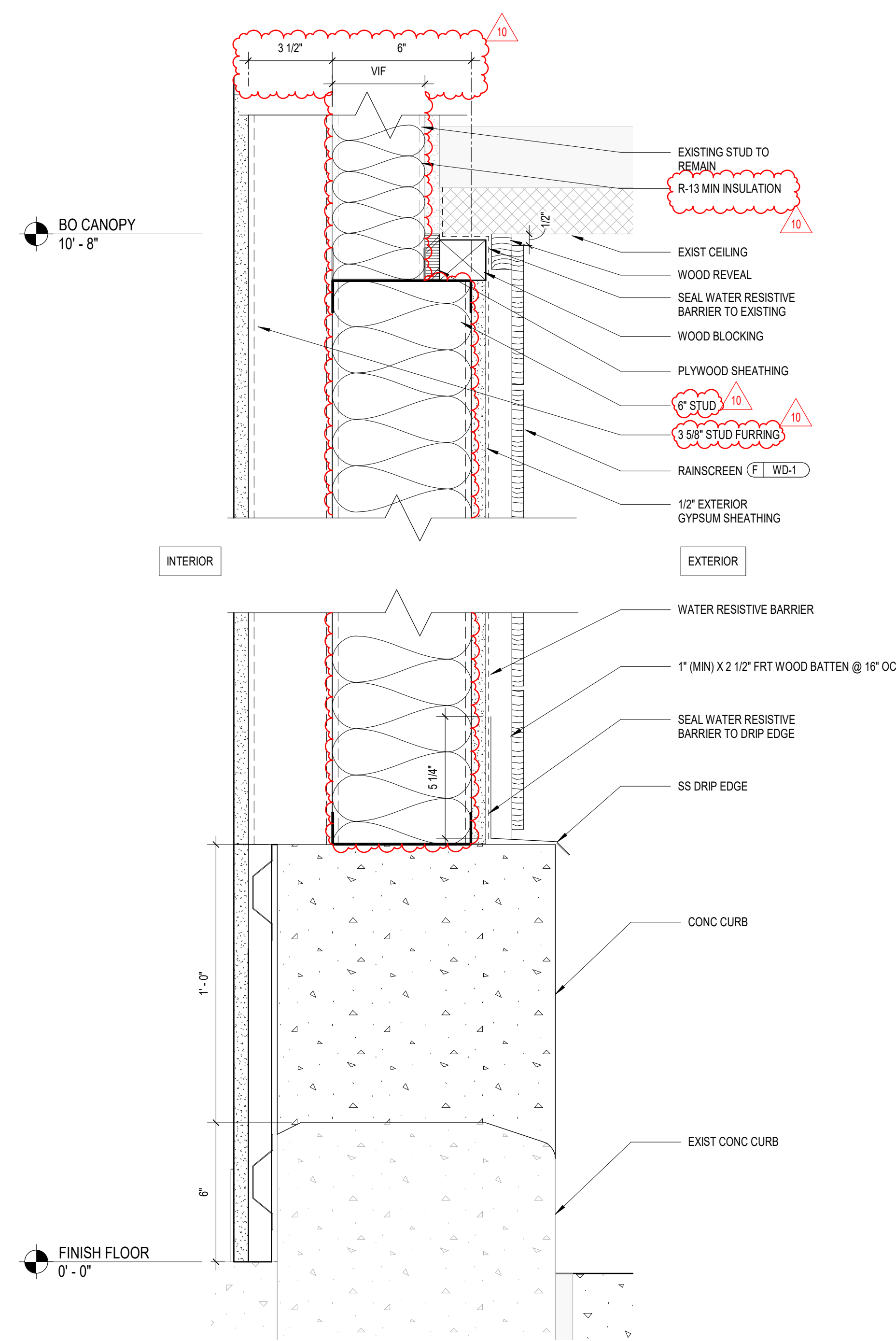


5 STOREFRONT JAMB DETAIL AT FRAMING  
3" = 1'-0"

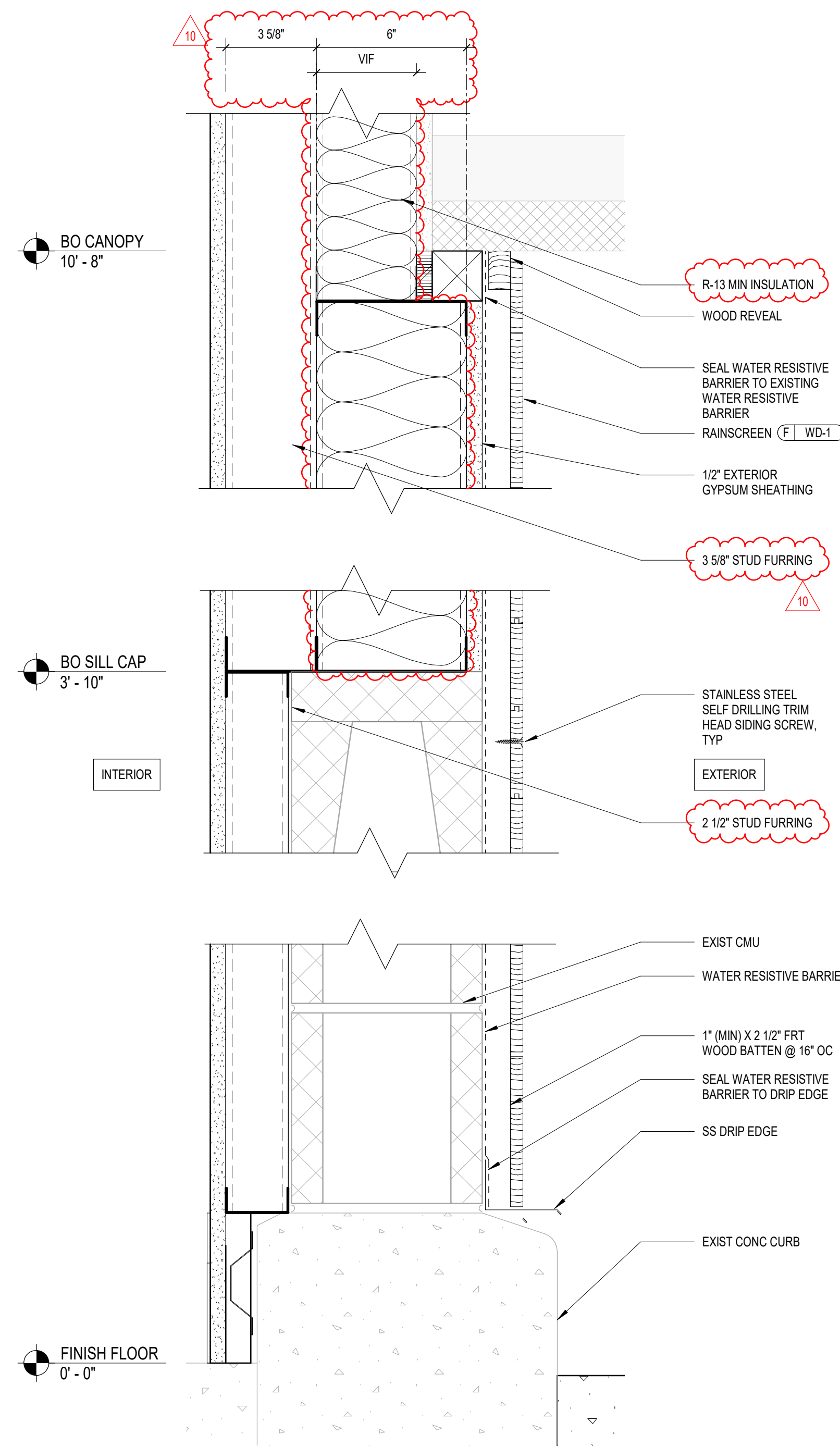


6 STOREFRONT JAMB DETAIL AT VESTIBULE  
3" = 1'-0"

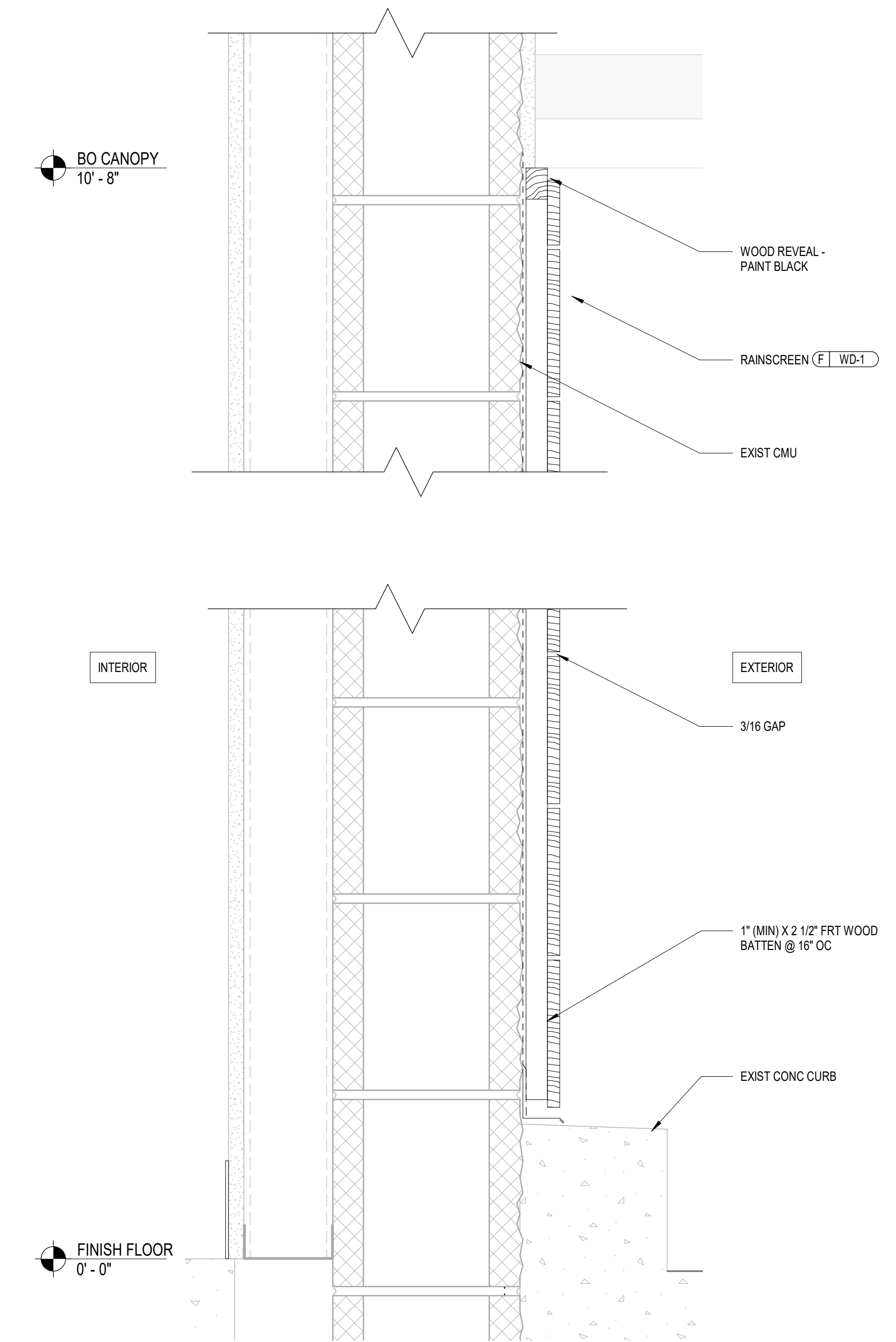
REV	DATE	DESCRIPTION
2	12/20/21	BULLETIN 2
01/14/22		CONSTRUCTION SET
10	04/22/22	BULLETIN 10



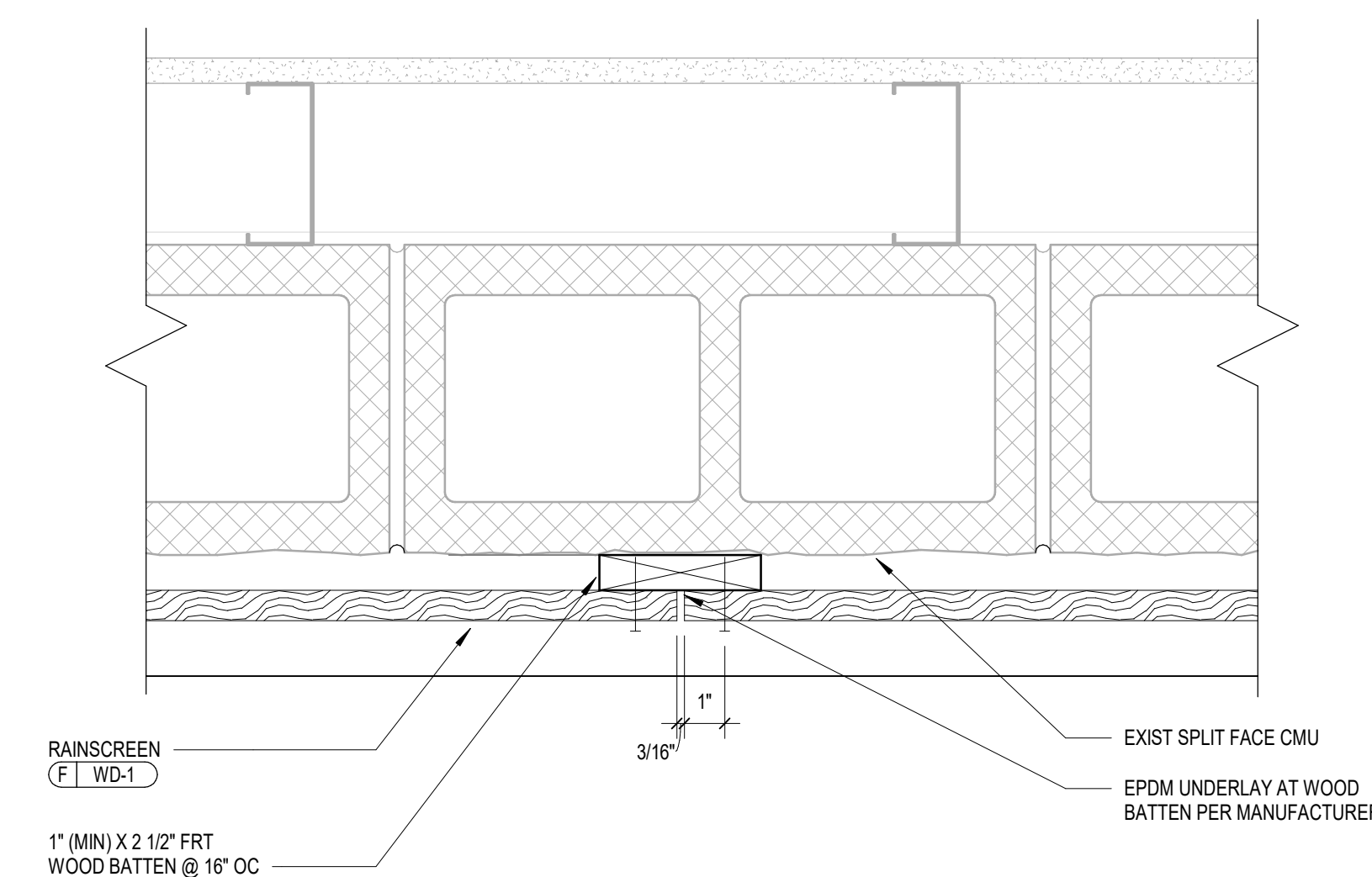
**1** WOOD PANELING AT STOREFRONT INFILL  
3" = 1'-0"



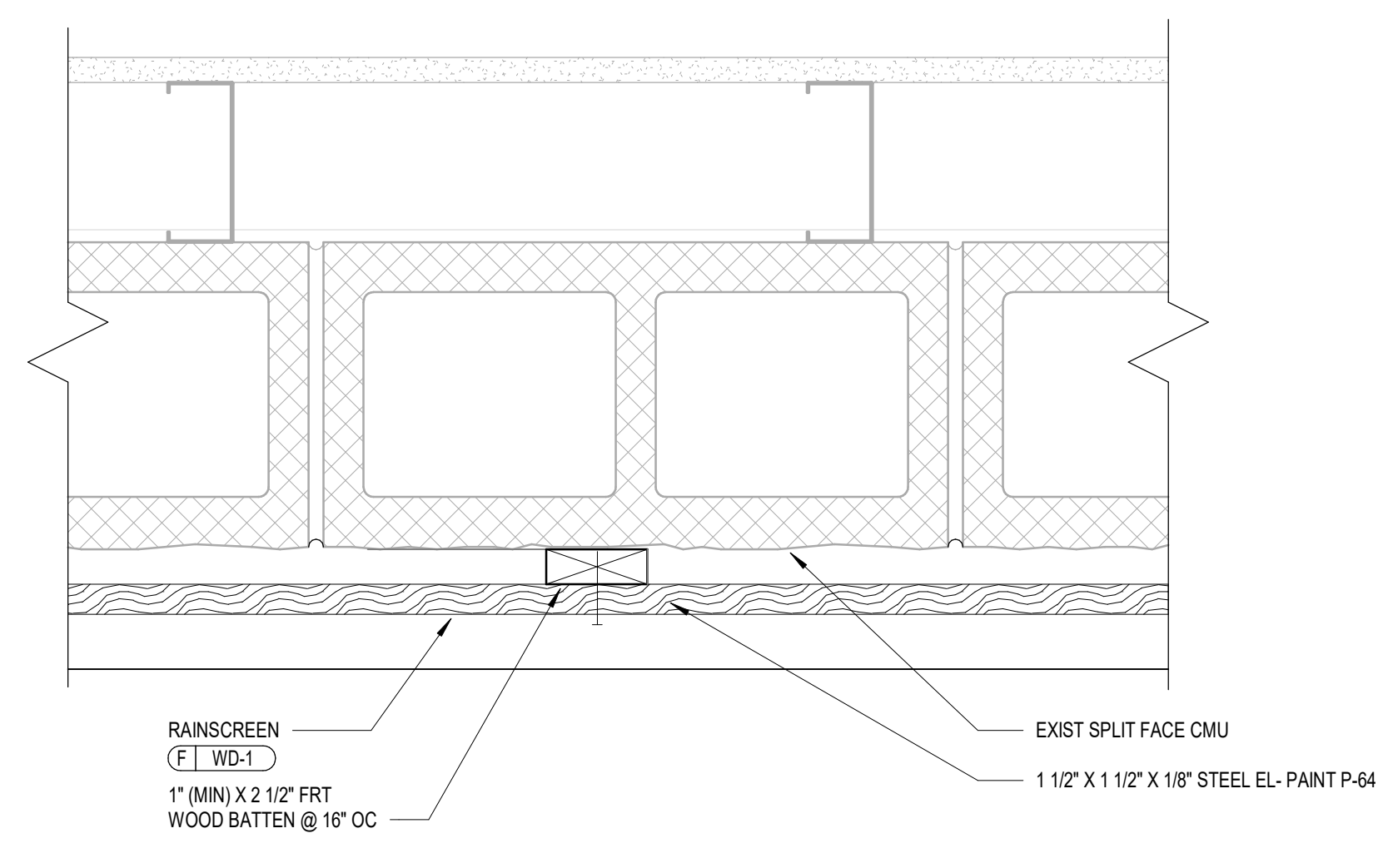
**2** WOOD PANELING AT CMU INFILL  
3" = 1'-0"



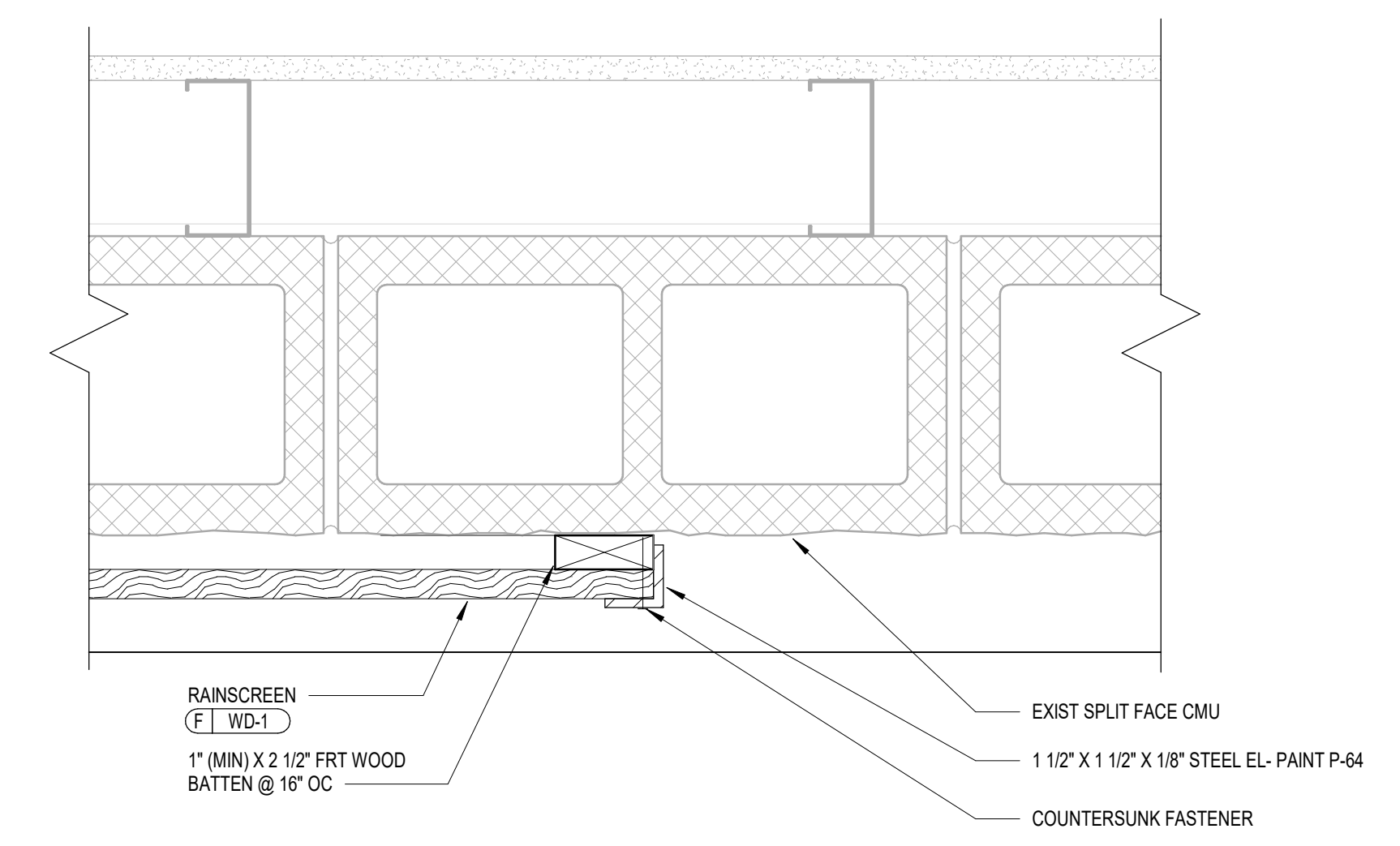
**3** WOOD PANELING AT EXIST CMU  
3" = 1'-0"



**4** DETAIL AT WOOD PANELING AT VERTICAL JOINT  
SCALE: 3" = 1'-0"



**5** DETAIL AT WOOD PANELING AT INTERMEDIATE SUPPORT  
SCALE: 3" = 1'-0"



**6** DETAIL AT WOOD PANELING TO EXISTING SPLIT FACE CMU  
3" = 1'-0"