

Chamberlin Architects, P.C.
437 Main Street
Grand Junction, CO 81501

ADDENDUM #1

Western Slope Food Bank of the Rockies
2294 Tall Grass Drive

Bid Package #2 - Site

Architect's Project No. 2108

June 23, 2021

The original Drawings dated on 6/15/22, for the project noted above are amended as noted in this Addendum. This Addendum may include revised Drawings that are to be inserted in the correct sequence in the Construction Issue. All bidders are required to include the items listed in the Addendum as part of their bid. This Addendum consists of **one (1)** page plus attachments.

Drawing changes are clouded.

Text deleted from the project manual by this addendum is indicated by Strikethrough (~~example~~). New text included in the Project manual is indicated in double underline typeface (example).

<u>ITEM NO.</u>	<u>DESCRIPTION</u>
-----------------	--------------------

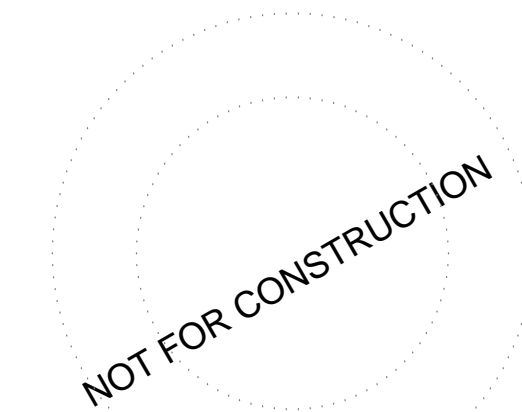
DRAWINGS

ADD1-1	Sheet E101 Exterior Lighting & Underground Raceway Plan: Delete sheet and replace with attached reissued sheet.
--------	---

END OF ADDENDUM 1

ARCHITECT: Chamberlin Architects, P.C.

BY: Eric Mendell, AIA



FOOD BANK OF THE ROCKIES

2295 TALL GRASS DRIVE
GRAND JUNCTION, COLORADO

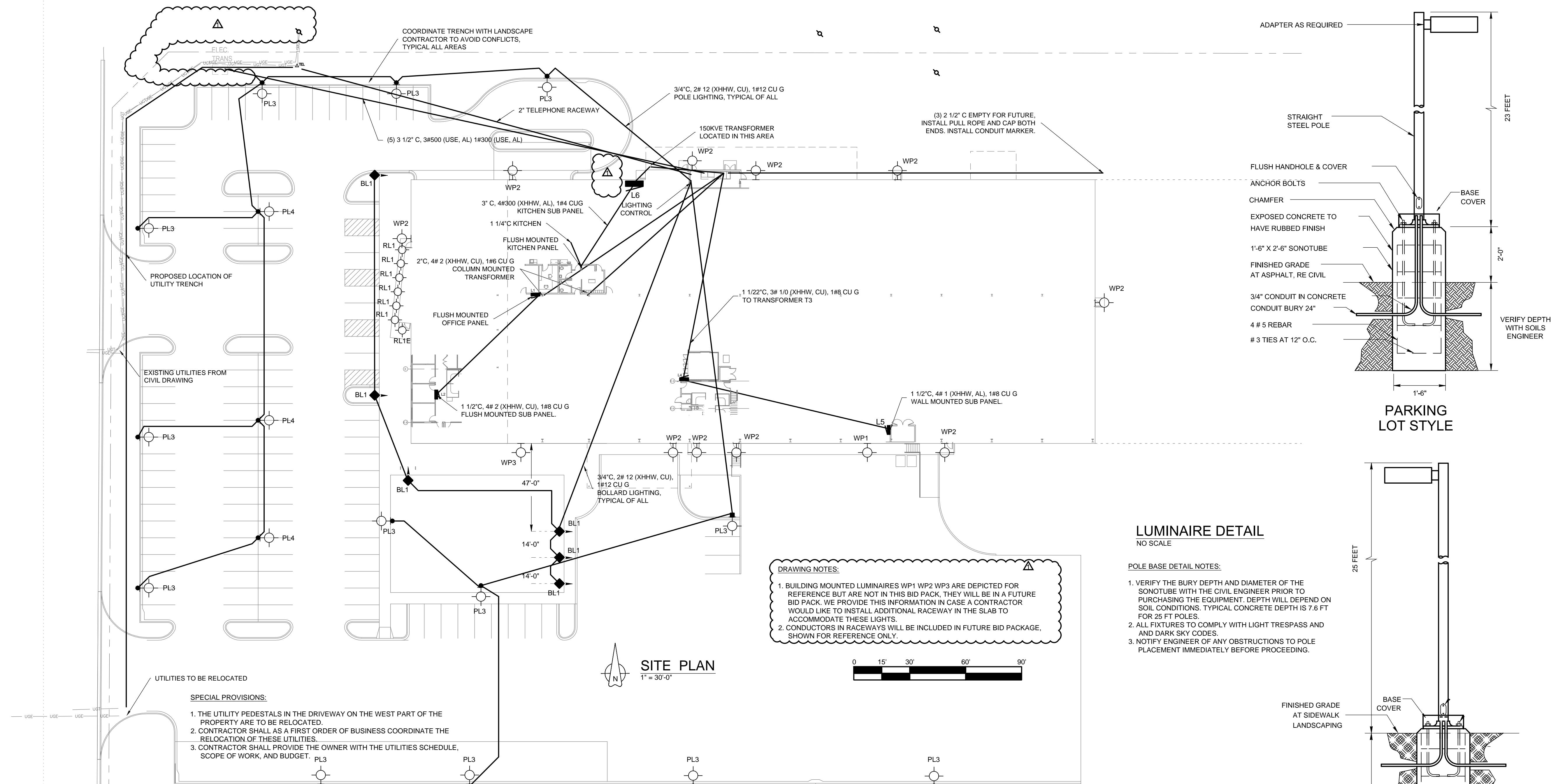
EXTERIOR LIGHTING & UNDERGROUND RACEWAY PLAN

NO: ISSUED FOR: DATE:

PROJECT STATUS:
BID PACKAGE #2: SITE

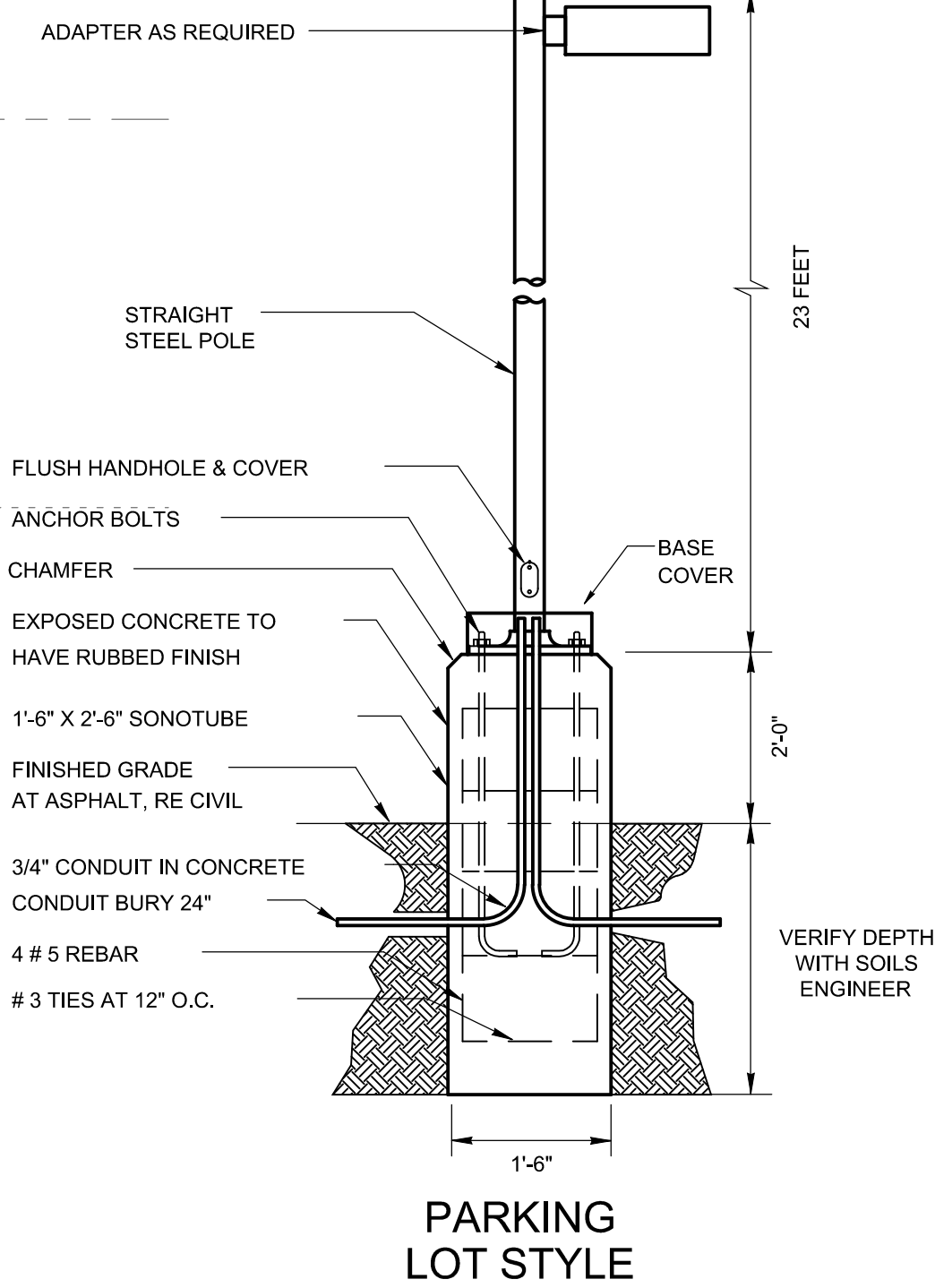
DATE:
06/15/2021 SHEET NO:

PROJECT NO:
2108 **E101**



- SPECIAL PROVISIONS:**
1. THE UTILITY PEDESTALS IN THE DRIVEWAY ON THE WEST PART OF THE PROPERTY ARE TO BE RELOCATED.
 2. CONTRACTOR SHALL AS A FIRST ORDER OF BUSINESS COORDINATE THE RELOCATION OF THESE UTILITIES.
 3. CONTRACTOR SHALL PROVIDE THE OWNER WITH THE UTILITIES SCHEDULE, SCOPE OF WORK, AND BUDGET.

LIGHTING SCHEDULE							
TYPE	LAMPS		CATALOG NO.	DESCRIPTION	INPUT LOAD	VOLT	MOUNTING
	QTY	CAT #					
PL1	-	LED	COLUMBIA UTB2-840-MVHE-5-OP16-P95-GR	LED HIGH BAY, 30,000 LUMENS	190 VA	480	PENDANT NOTE 1
PL1E	-	LED	COLUMBIA UTB2-840-MVHE-5-OP16-P95-GR-ELL14	LED HIGH BAY, 30,000 LUMENS WITH EMERGENCY BALLAST	190 VA	480	PENDANT NOTE 1
PL2	-	LED	COOPER LIGHTING 1400-DOME-90-L50-120-SCG-TCG-RS -48-DOME-BM	LED PENDENT, 693 LUMENS	8.5 VA	120	PENDANT NOTE 1
PL3	-	WITH UNIT	HUBBELL RAR1-160L-100-3KL-4W-480-ASQ- DNT-NXSP30F-BC	ARCHITECTURAL LED AREA LIGHT, 12,000 LUMENS TYPE IV WITH OCC, SENSOR, DAYLIGHT HARVESTING	87.9 VA	480	25'
			HUBBELL SSS-H-23-40-A-1-B3-DBT	SQUARE STRAIGHT STEEL POLE			25'
PL4	-	WITH UNIT	HUBBELL RAR1-160L-100-3KL-5QW-480-ASQ- DNT-NXSP30F-BC	ARCHITECTURAL LED AREA LIGHT, 12,000 LUMENS TYPE V WITH OCC, SENSOR, DAYLIGHT HARVESTING	87.9 VA	480	25'
			HUBBELL SSS-H-23-40-A-1-B3-DBT	SQUARE STRAIGHT STEEL POLE			25'
		THREE EACH	HUBBELL SSS-H-25-40-A-1-B3-DBT	SQUARE STRAIGHT STEEL POLE			25'
WP1	-	WITH UNIT	HUBBELL RAR1-160L-100-3KL-4W-277-WB- DBT-NXSP30F-BC	ARCHITECTURAL LED AREA LIGHT, 12,000 LUMENS TYPE IV WITH OCC, SENSOR, DAYLIGHT HARVESTING	87.9 VA	277	23'-6"
WP2	-	WITH UNIT	HUBBELL RWL1-48L-45-5K7-4W-277-DBT-E	ARCHITECTURAL LED WALL PACK, 5,741 LUMENS, EMERGENCY BATTERY	46.5 VA	277	8'-6"
WP3	-	WITH UNIT	HUBBELL RWL1-48L-45-5K7-4W-277-DBT	ARCHITECTURAL LED WALL PACK, 5,741 LUMENS	46.5 VA	277	8'-6"
BL1	-	WITH UNIT	HUBBELL PA7S-P7-NU4-12L-010-3K7- 42A-DB2-MW-UNV	ARCHITECTURAL LED BOLLARD LIGHT, 1,330 LUMENS TYPE IV WITH MOTION SENSOR	14 VA	277	3'-6"

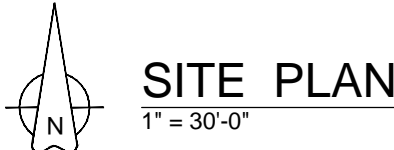


LUMINAIRE DETAIL NO SCALE

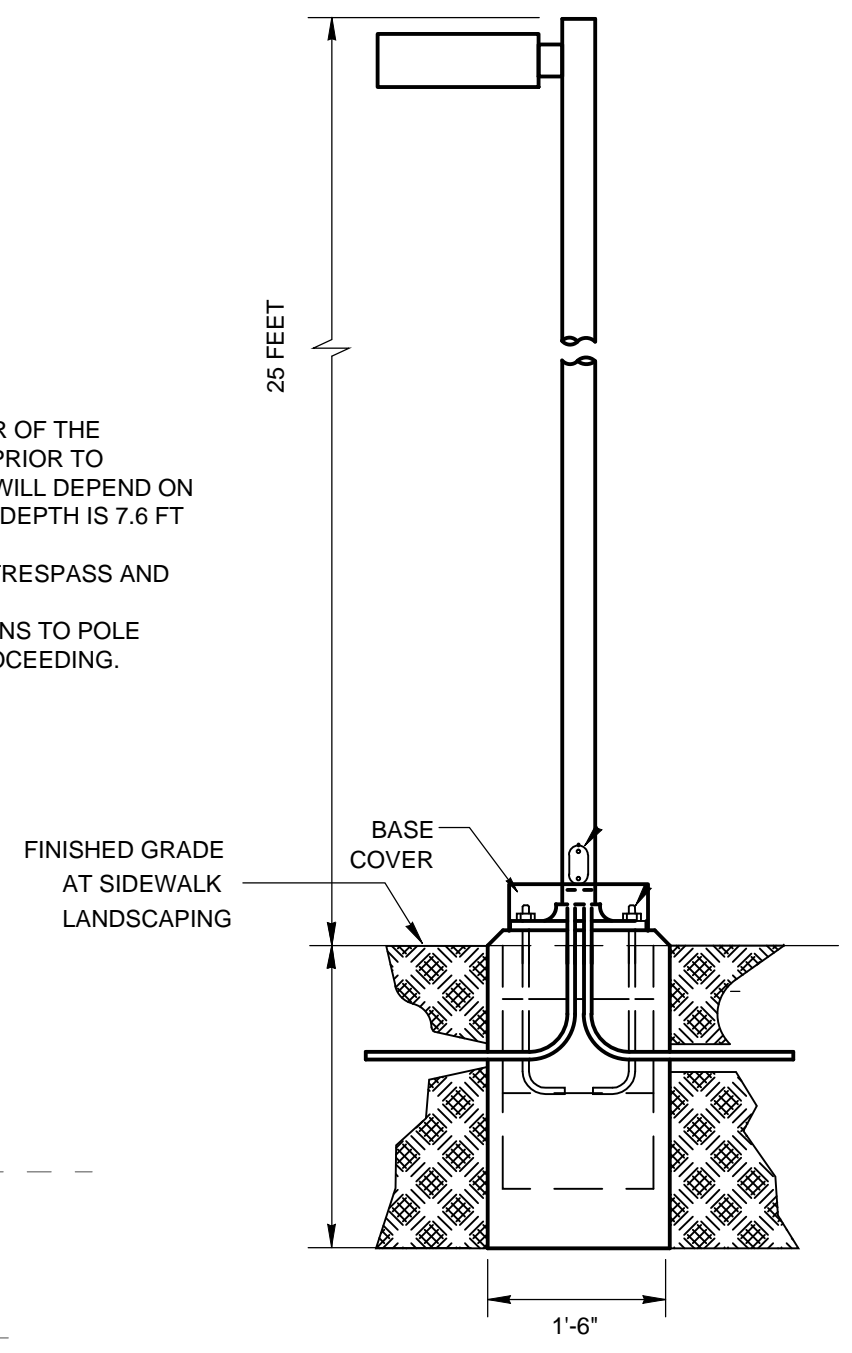
POLE BASE DETAIL NOTES:

1. VERIFY THE BURY DEPTH AND DIAMETER OF THE SONOTUBE WITH THE CIVIL ENGINEER PRIOR TO PURCHASING THE EQUIPMENT. DEPTH WILL DEPEND ON SOIL CONDITIONS. TYPICAL CONCRETE DEPTH IS 7.6 FT FOR 25 FT POLES.
2. ALL FIXTURES TO COMPLY WITH LIGHT TRESPASS AND AND DARK SKY CODES.
3. NOTIFY ENGINEER OF ANY OBSTRUCTIONS TO POLE PLACEMENT IMMEDIATELY BEFORE PROCEEDING.

- DRAWING NOTES:**
1. BUILDING MOUNTED LUMINAIRES WP1 WP2 WP3 ARE DEPICTED FOR REFERENCE BUT ARE NOT IN THIS BID PACK. THEY WILL BE IN A FUTURE BID PACK. WE PROVIDE THIS INFORMATION IN CASE A CONTRACTOR WOULD LIKE TO INSTALL ADDITIONAL RACEWAY IN THE SLAB TO ACCOMMODATE THESE LIGHTS.
 2. CONDUCTORS IN RACEWAYS WILL BE INCLUDED IN FUTURE BID PACKAGE, SHOWN FOR REFERENCE ONLY.



SITE PLAN
1" = 30'-0"



BOLLARD DETAIL NO SCALE

POLE BASE DETAIL NOTES:

1. VERIFY THE BURY DEPTH AND DIAMETER OF THE SONOTUBE WITH THE CIVIL ENGINEER PRIOR TO PURCHASING THE EQUIPMENT. DEPTH WILL DEPEND ON SOIL CONDITIONS.
2. ALL FIXTURES SHALL COMPLY WITH LIGHT TRESPASS AND AND DARK SKY CODES.
3. NOTIFY ENGINEER OF ANY OBSTRUCTIONS TO BOLLARD PLACEMENT IMMEDIATELY BEFORE PROCEEDING.