

Chamberlin Architects, P.C.
437 Main Street
Grand Junction, CO 81501

ADDENDUM #8

Western Slope Food Bank of the Rockies
698 Long Acre Drive

Bid Package #4 – Above Ground

Architect's Project No. 2108

September 14, 2021

The original Project Manual dated 8/25/21 and Drawings dated on 8/25/21, for the project noted above are amended as noted in this Addendum. This Addendum may include revised Drawings that are to be inserted in the correct sequence in the Construction Issue. All bidders are required to include the items listed in the Addendum as part of their bid. This Addendum consists of **one (1)** page plus attachments.

Drawing changes are clouded.

Text deleted from the project manual by this addendum is indicated by Strikethrough (~~example~~). New text included in the Project manual is indicated in double underline typeface (example).

ITEM NO. DESCRIPTION

DRAWINGS

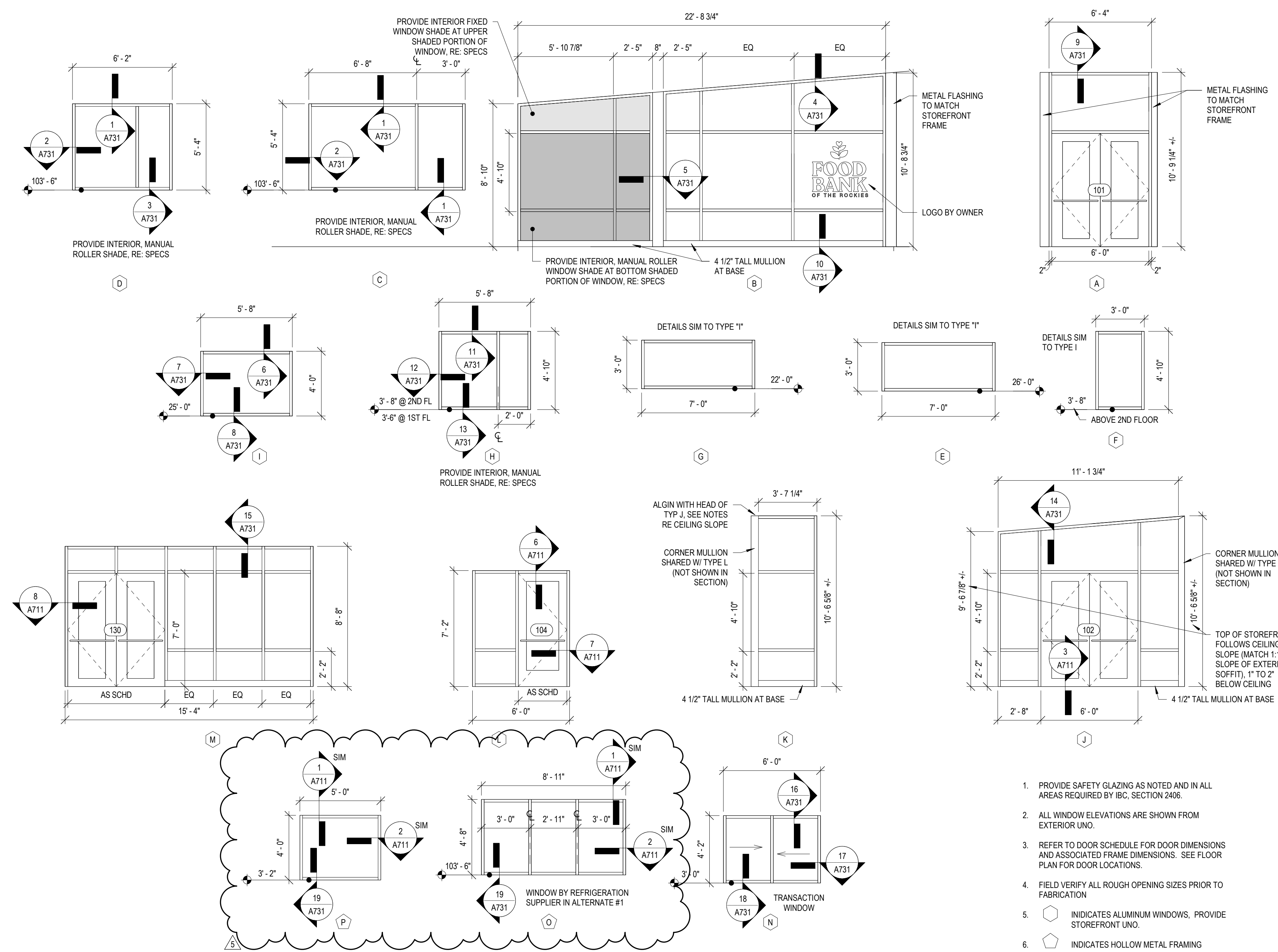
ADD8-1 Sheet A701 Window Details: Add detail 19 per attached reissued sheet A731.

ADD8-2 Sheet A731 Door Schedule, Door & Frame Types, Window Types: Add detail references to window types O and P per attached reissued sheet A701.

END OF ADDENDUM 8

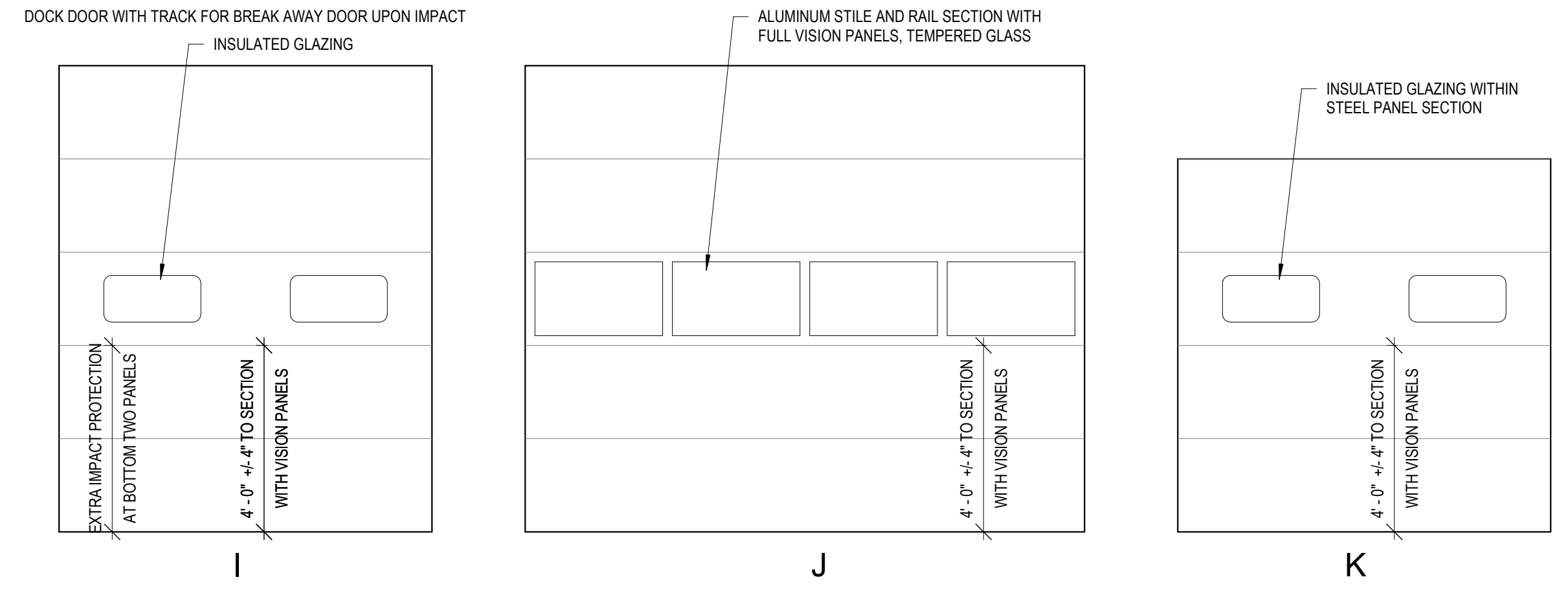
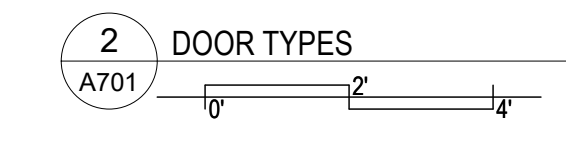
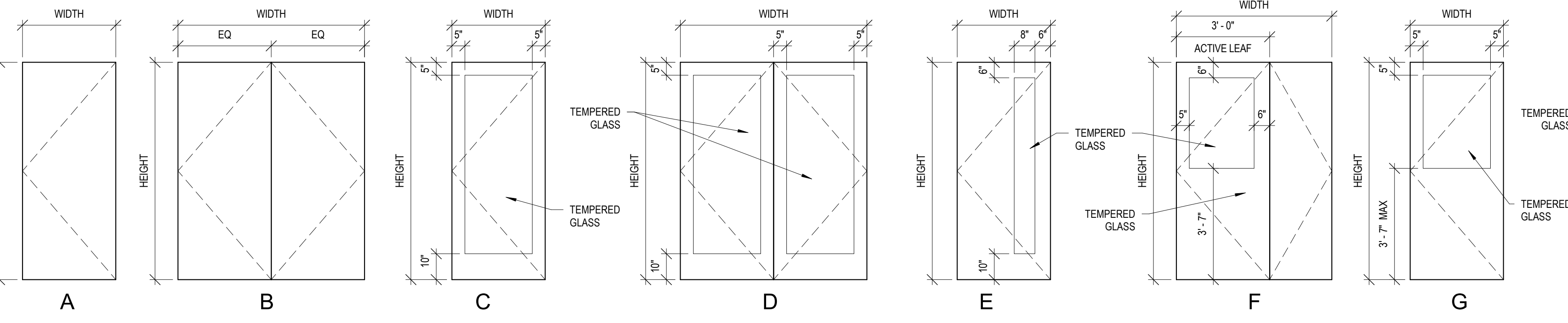
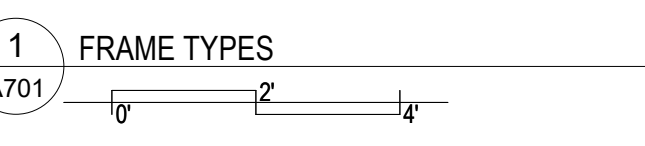
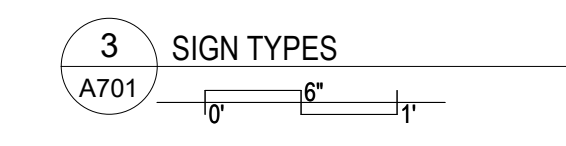
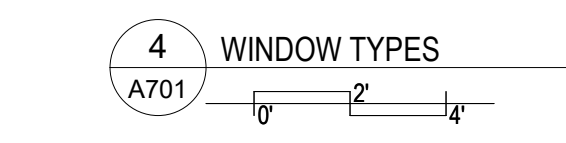
ARCHITECT: Chamberlin Architects, P.C.

BY: Eric Mendell, AIA



- PROVIDE SAFETY GLAZING AS NOTED AND IN ALL AREAS REQUIRED BY IBC, SECTION 2406.
- ALL WINDOW ELEVATIONS ARE SHOWN FROM EXTERIOR UNO.
- REFER TO DOOR SCHEDULE FOR DOOR DIMENSIONS AND ASSOCIATED FRAME DIMENSIONS. SEE FLOOR PLAN FOR DOOR LOCATIONS.
- FIELD VERIFY ALL ROUGH OPENING SIZES PRIOR TO FABRICATION.
- INDICATES ALUMINUM WINDOWS, PROVIDE STOREFRONT UNO.
- ◇ INDICATES HOLLOW METAL FRAMING.

DOOR NO.	DOOR				FRAME				HWDR SET	NOTES	SIGNAGE		
	W	H	T	MATER IAL	MATER IAL	JAMB	DETAIL HEAD	SILL			TYPE	TEXT	
001	6'-0"	7'-0"	1 3/4"	-	-	-	-	-	27	GATE, SEE DETAILS, INCLUDED IN DOOR SCHEDULE FOR HARDWARE ONLY	E	EXIT	
002	6'-0"	7'-0"	1 3/4"	-	-	-	-	-	27	GATE, SEE DETAILS, INCLUDED IN DOOR SCHEDULE FOR HARDWARE ONLY	E	EXIT	
101	6'-0"	7'-0"	1 3/4"	AL	D	AL	A, RE WDW TYPES	-	01	-	E	EXIT	
102	6'-0"	7'-0"	1 3/4"	AL	D	AL	L, RE WDW TYPES	-	02	-	E	EXIT	
104	3'-0"	7'-0"	1 3/4"	AL	C	AL	L, RE WDW TYPES	-	03	-	E	EXIT	
105	3'-0"	7'-0"	1 3/4"	HM	E	HM	1	18A711	17A711	3A711	04	E	EXIT
107	3'-0"	7'-0"	1 3/4"	WD	E	HM	1	2A711	1A711	-	05	D	BREAK ROOM 107
109	3'-0"	7'-0"	1 3/4"	WD	A	HM	1	2A711	1A711	-	07	E	JANITOR 109
110	3'-0"	7'-0"	1 3/4"	WD	A	HM	1	2A711	1A711	-	08	B	-
111	3'-0"	7'-0"	1 3/4"	WD	A	HM	1	2A711	1A711	-	08	A	-
112	3'-0"	7'-0"	1 3/4"	WD	C	HM	1	2A711	1A711	-	09	E	OFFICE 112
113	3'-0"	7'-0"	1 3/4"	WD	B	HM	1	2A711	1A711	-	16	E	IT 113
114	3'-0"	7'-0"	1 3/4"	WD	E	HM	1	2A711	1A711	-	11	F	OFFICE 114
115	3'-0"	7'-0"	1 3/4"	WD	E	HM	1	2A711	1A711	-	11	F	OFFICE 115
116	3'-0"	7'-0"	1 3/4"	WD	E	HM	1	2A711	1A711	-	11	F	OFFICE 116
117	3'-0"	7'-0"	1 3/4"	WD	E	HM	1	2A711	1A711	-	11	F	OFFICE 117
118	3'-0"	7'-0"	1 3/4"	WD	E	HM	1	2A701	1A711	-	11	F	OFFICE 118
119	3'-0"	7'-0"	1 3/4"	WD	E	HM	1	2A711	1A711	-	11	F	OFFICE 119
120	3'-0"	7'-0"	1 3/4"	WD	E	HM	1	2A711	1A711	-	11	F	OFFICE 120
121	3'-0"	7'-0"	1 3/4"	WD	C	HM	1	2A711	1A711	-	09	D	MEALS ON WHEELS OFFICES
122	3'-0"	7'-0"	1 3/4"	WD	E	HM	1	2A711	1A711	-	11	F	OFFICE 122
123	3'-0"	7'-0"	1 3/4"	WD	E	HM	1	2A711	1A711	-	11	F	OFFICE 123
124	3'-0"	7'-0"	1 3/4"	WD	E	HM	1	2A711	1A711	-	11	F	OFFICE 124
125	3'-0"	7'-0"	1 3/4"	WD	E	HM	1	2A711	1A711	-	11	F	OFFICE 125
126	3'-0"	7'-0"	1 3/4"	WD	E	HM	1	2A711	1A711	-	11	F	OFFICE 126
127	3'-0"	7'-0"	1 3/4"	WD	A	HM	1	2A711	1A711	-	07	D	RECORDS STORAGE 127
128	3'-0"	7'-0"	1 3/4"	HM	G	HM	1	15A711	12A711 SIM	-	09	E	TBD
128A	3'-0"	7'-0"	1 3/4"	HM	G	HM	1	15A711	14A711	3A711	04	E	EXIT
129B	12'-0"	12'-0"	1 5/8"	STL	J	STL	-	10A711	9A711	-	32	E	ELECTRIC OPERATOR, ALL HARDWARE BY DOOR MANUFACTURER
129C	12'-0"	12'-0"	1 5/8"	STL	J	STL	-	10A711	9A711	-	32	E	ELECTRIC OPERATOR, ALL HARDWARE BY DOOR MANUFACTURER
130	6'-0"	7'-0"	1 3/4"	AL	D	AL	M, RE WDW TYPES	-	12	-	E	TBD	
131	3'-0"	7'-0"	1 3/4"	HM	G	HM	1	2A711	1A711	-	05B	D	LOCKER ROOM 131
132	3'-0"	7'-0"	1 3/4"	WD	A	HM	1	2A711	1A711	-	13	C	-
133	3'-0"	7'-0"	1 3/4"	WD	A	HM	1	2A711	1A711	-	13	C	-
134	3'-0"	7'-0"	1 3/4"	HM	G	HM	1	2A711	1A711	-	14	E	KITCHEN 134
135	3'-0"	7'-0"	1 3/4"	HM	G	HM	1	2A711	1A711	-	15	E	OFFICE 135
136A	3'-0"	7'-0"	1 3/4"	HM	A	HM	1	2A711	1A711	-	17	F	DRY STORAGE 136
136B	6'-0"	7'-0"	1 3/4"	HM	B	HM	1	2A711	1A711	-	16.1	D	DRY STORAGE 136
137	3'-0"	7'-0"	1 3/4"	-	-	-	-	-	-	16A711	28	D	KITCHEN FREEZER 137
138A	3'-0"	7'-0"	1 3/4"	-	-	-	-	-	-	-	29	D	KITCHEN COOLER 138
138B	3'-0"	7'-0"	1 3/4"	-	-	-	-	-	-	-	29	D	KITCHEN COOLER 138
138C	3'-0"	7'-0"	1 3/4"	HM	G	HM	1	15A711	14A711	3A711	04B	D	KITCHEN COOLER 138
139B	8'-0"	8'-0"	1 1/2"	STL	K	STL	-	10A711	9A711	-	32	E	EXIT
139C	3'-0"	7'-0"	1 3/4"	HM	G	HM	1	2A711	1A711	-	17	D	KITCHEN 134 /LOADOUT AREA 139
139D	6'-0"	7'-0"	1 3/4"	HM	H	HM	1	2A711	1A711	-	18	D	KITCHEN 134 /LOADOUT AREA 139
139E	3'-0"	7'-0"	1 3/4"	HM	G	HM	1	15A711 SIM	12A711	-	10.1	D	MEALS ON WHEELS OFFICES
141A	3'-0"	8'-0"	1 3/4"	HM	H	HM	1	2A711	1A711	-	19	D	CLEAN ROOM 141
141B	3'-0"	7'-0"	1 3/4"	HM	G	HM	1	2A711	1A711	-	14	D	CLEAN ROOM 141
141C	3'-0"	7'-0"	1 3/4"	HM	G	HM	1	2A711	1A711	-	17	D	KITCHEN 134 /CLEAN ROOM 141
141D	5'-0"	7'-0"	1 3/4"	HM	F	HM	1	2A711	1A711	-	18.1	D	CLEAN ROOM 141 /LOADOUT AREA 139
141E	6'-0"	7'-0"	1 3/4"	HM	B	HM	1	2A711	1A711	-	20	E	DEHYDRATORS
141F	6'-0"	7'-0"	1 3/4"	HM	B	HM	1	2A711	1A711	-	20	E	DEHYDRATORS
143	6'-0"	7'-0"	1 3/4"	HM	B	HM	1	18A711 SIM	17A711 SIM	3A711	16.2	D	WATER ENTRY & MECHANICAL ROOM 143
144A	3'-0"	7'-0"	1 3/4"	HM	A	HM	1	18A711 SIM	17A711 SIM	3A711	21	D	ELECTRICAL ROOM 144
144B	3'-0"	7'-0"	1 3/4"	HM	A	HM	1	18A711 SIM	17A711 SIM	3A711	21	D	ELECTRICAL ROOM 144
145A	3'-0"	7'-0"	1 3/4"	HM	G	HM	1	2A711	1A711	-	10	D	OFFICE 145
145B	3'-0"	7'-0"	1 3/4"	HM	G	HM	1	2A711	1A711	-	10	F	OFFICE 145
146	3'-0"	7'-0"	1 3/4"	HM	A	HM	1	2A711	1A711	-	06	E	JAN 146
147	3'-0"	7'-0"	1 3/4"	WD	A	HM	1	2A711	1A711	-	13.1	G	W/SHOWER ROOM 147
148A	3'-0"	7'-0"	1 3/4"	HM	G	HM	1	15A711	14A711	3A711	23	D	CHECK IN /EXIT
148B	3'-0"	7'-0"	1 3/4"	HM	G	HM	1	2A711	1A711	-	09B	E	CHECK IN /EXIT
149	5'-0"	7'-0"	1 5/8"	-	-	-	-	-	-	-	31	NIC	BY REFRIGERATION SUPPLIER
150	5'-0"	7'-0"	1 3/4"	-	-	-	-	-	-	16A711	28	D	BY REFRIGERATION SUPPLIER, PROVIDE THRESHOLD ONLY
151	6'-0"	7'-0"	1 3/4"	HM	B	HM	1	2A711	1A711	-	16	E	IT 151
152A	3'-0"	7'-0"	1 3/4"	HM	G	HM	1	15A711	14A711	3A711	22	E	EXIT
152B	6'-0"	10'-0"	1 1/2"	STL	I	STL	-	5A711	4A711	2A511	32	E	ELECTRIC OPERATOR, ALL HARDWARE BY DOOR MANUFACTURER, INTEGRATE DOOR OPERATOR WITH DOOR EQUIPMENT CONTROLS
152C	6'-0"	10'-0"	1 1/2"	STL	I	STL	-	5A711	4A711	2A511	32	E	ELECTRIC OPERATOR, ALL HARDWARE BY DOOR MANUFACTURER, INTEGRATE DOOR OPERATOR WITH DOOR EQUIPMENT CONTROLS
152D	6'-0"	10'-0"	1 1/2"	STL	I	STL	-	5A711	4A711	2A511	32	E	ALL HARDWARE BY DOOR MANUFACTURER
152E	6'-0"	10'-0"	1 1/2"	STL	I	STL	-	5A711	4A711	2A511	32	E	ALL HARDWARE BY DOOR MANUFACTURER
152F	6'-0"	10'-0"	1 1/2"	STL	I	STL	-	5A711	4A711	2A511	32	E	ALL HARDWARE BY DOOR MANUFACTURER
152G	6'-0"	10'-0"	1 1/2"	STL	I	STL	-	5A711	4A711	2A511	32	E	ALL HARDWARE BY DOOR MANUFACTURER
153A	6'-0"	10'-0"	1 5/8"	-	-	-	-	-	-	16A711	28	D	BY REFRIGERATION SUPPLIER, PROVIDE THRESHOLD ONLY
153B	3'-0"	7'-0"	1 3/4"	-	-	-	-	-	-	16A711	28	D	BY REFRIGERATION SUPPLIER, PROVIDE THRESHOLD ONLY
153C	6'-0"	10'-0"	1 5/8"	-	-	-	-	-	-	11A711	28	D	BY REFRIGERATION SUPPLIER, PROVIDE THRESHOLD ONLY
153D	3'-0"	7'-0"	1 3/4"	-	-	-	-	-	-	16A711	28	D	BY REFRIGERATION SUPPLIER, PROVIDE THRESHOLD ONLY
154A	6'-0"	10'-0"	1 5/8"	-	-	-	-	-	-	11A711	28	D	BY REFRIGERATION SUPPLIER, PROVIDE THRESHOLD ONLY
154B	3'-0"	7'-0"	1 3/4"	-	-	-	-	-	-	16A711	28	D	BY REFRIGERATION SUPPLIER, PROVIDE THRESHOLD ONLY
154C	6'-0"	10'-0"	1 5/8"	-	-	-	-	-	-	11A711	28	D	BY REFRIGERATION SUPPLIER, PROVIDE THRESHOLD ONLY
155A	3'-0"	7'-0"	1 3/4"	HM	G	HM	1	15A711	14A711	3A711	22	E	EXIT
155B	6'-0"	10'-0"	1 1/2"	STL	I	STL	-	5A711	4A711	-	32	E	ELECTRIC OPERATOR, ALL HARDWARE BY DOOR MANUFACTURER
155C	3'-0"	7'-0"	1 3/4"	HM	A	HM	1	15A711	14A711	3A711	04.1	E	EXIT
155D	3'-0"	7'-0"	1 3/4"	HM	A	HM	1	15A711	14A711	3A711	04.1	E	EXIT
156	6'-0"	7'-0"	1 3/4"	HM	B	HM	1	2A711	1A711	-	16	E	MAINTENANCE 156
157	3'-0"	7'-0"	1 3/4"	HM	A	HM	1	15A711	14A711	3A711	25	E	OFFICES
201	3'-0"	7'-0"	1 3/4"	HM	G	HM	1	2A711	1A711	-	10	F	OFFICE 201
202	3'-0"	7'-0"	1 3/4"	WD	E	HM	1	2A711	1A711	-	11	F	OFFICE 202
203	3'-0"	7'-0"	1 3/4"	WD	E	HM	1	2A711	1A711	-	11	F	OFFICE 203
204	3'-0"	7'-0"	1 3/4"	WD	E	HM	1	2A711	1A711	-	26	E	STORAGE



FOOD BANK OF THE ROCKIES

698 LONG ACRE DRIVE
GRAND JUNCTION, COLORADO

DOOR SCHEDULE, DOOR & FRAME TYPES, WINDOW TYPES

NO: A701 ISSUED FOR: DATE: 9/14/2021
ADDENDUM #:

100% CONSTRUCTION DOCUMENTS
BID PACKAGE #4, ABOVE GROUND

DATE: 8/25/2021 SHEET NO: A701
PROJECT NO: 2108

