

GLENWOOD SPRINGS WATER FILTER PLANT

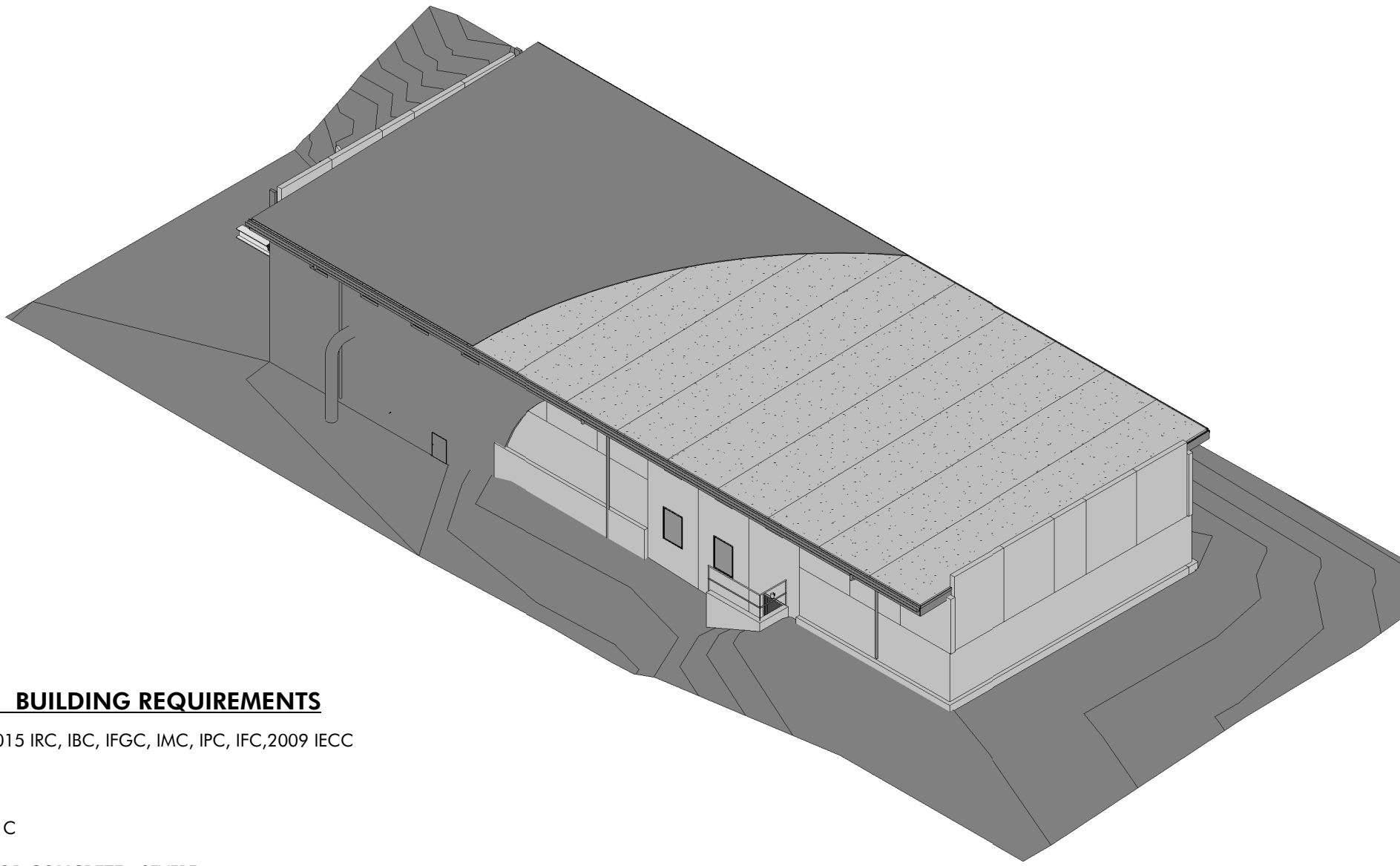
BID/PERMIT



Land+Shelter
ARCHITECTURE AND PLANNING
16 North 4th Street, Carbondale, CO 81623
970.963.0201 info@landandshelter.com

ABBREVIATIONS

A.F.F.	ABOVE FINISH FLOOR	INFO.	INFORMATION
ADJ.	ADJUSTABLE	INSUL.	INSULATION
ALT.	ALTERNATE	JST.	JOIST
A.B.	ANCHOR BOLTS	L.L.	LIVE LOAD
&	AND	LONGINT.	LONGITUDINAL
ARCH.	ARCHITECTURAL	N.I.C.	NOT IN CONTRACT
@	AT	O.C.	ON CENTER
BM.	BEAM	OPP.	OPPOSITE
BM. PKT.	BEAM POCKET	O/	OVER
BRG.	BEARING	PTD.	PAINTED
BLKG.	BLOCKING	PERF.	PERFORATED
BOT.	BOTTOM	PL.	PLATE
B.F.	BOTTOM OF FOOTING	PLY.	PLYWOOD
BLDG.	BUILDING	PROP. LINE	PROPERTY LINE
B.O.	BY OWNER	REINF.	REINFORCEMENT
CAB.	CABINET	RDWD.	REDWOOD
CLG.	CEILING	REQ'D.	REQUIRED
CL.	CENTER LINE	RESIL.	RESILIENT
C.T.	CERAMIC TILE	REV.	REVISED
CLR.	CLEAR	S.M.	SHEET METAL
COL.	COLUMN	SIM.	SIMILAR
CONC.	CONCRETE	S.F. OR SQ. FT.	SQUARE FEET
CONN.	CONNECTION	STD.	STANDARD
CONT.	CONTINUOUS	STL.	STEEL
DTL.	DETAIL	STDS.	STUDS
DBL.	DOUBLE	THK.	THICK
DWL.	DOWEL	TLT.	TOILET
E.W.	EACH WAY	T.F.	TOP OF FOOTING
ELEV. OR EL.	ELEVATION	T.P.	TOP OF PLATE
EXIST'G	EXISTING	T.L.	TOP OF LEDGE
EXT.	EXTERIOR	T.W.	TOP OF WALL
F.F.	FINISHED FLOOR	TOT.	TOTAL
F.D.	FLOOR DRAIN	T.B.	TOWEL BAR
FLR.	FLOOR	TRANSV.	TRANSVERSE
FTG.	FOOTING	TYP.	TYPICAL
FND.	FOUNDATION	U.N.O.	UNLESS NOTED OTHERWISE
GA.	GAUGE	V.I.F.	VERIFY IN FIELD
G.L.	GLU-LAM	VERT.	VERTICAL
G.W.B.	GYPSUM WALL BOARD	V.W.C.	VINYL WALL COVERING
G.S.	GAS STUB	W.C.	WATER CLOSET
HB.	HOSE BIB	W.H.	WATER HEATER
HT.	HEIGHT	W.P.	WATERPROOF
HK.	HOOK	W.R.	WATER RESISTANT
HORIZ.	HORIZONTAL	WIN.	WINDOW
HYD.	HYDRANT	W/	WITH
		WD.	WOOD



GLENWOOD SPRINGS BUILDING REQUIREMENTS

CODES AND STANDARDS: 2015 IRC, IBC, IFGC, IMC, IPC, IFC, 2009 IECC

ROOF SNOWLOAD: 50 PSF

SEISMIC DESIGN CATEGORY: C

WEATHERING PROBABILITY FOR CONCRETE: SEVERE.

TERMITE INFESTATION PROBABILITY: NONE TO SLIGHT.

WIND SPEED: 90MPH

DECAY PROBABILITY: SLIGHT

WIND EXPOSURE: B

FROST DEPTH: 36IN.

WINTER DESIGN TEMPERATURE: -2F

AIR FREEZING INDEX: 2500. ICE SHIELD UNDERLAYMENT REQUIRED.

MEAN ANNUAL TEMPERATURE: 48F

CLIMATE ZONE: 5B (GARFIELD COUNTY)

INSULATION:

-WINDOWS/DOORS U=.37, TBL 402.1.1, 2021 IECC.

MINIMUM R-VALUES:

-ROOF R-VALUE 30ci

PROJECT DESCRIPTION

PROJECT SCOPE: INCLUDES REMOVING EXISTING EXTERIOR SPRAY FOAM SYSTEM ON ROOF AND EXTERIOR WALL SURFACES. RE-ROOF INCLUDES TPO, HD BOARD AND REQUIRED INSULATION. ALL EXTERIOR WALLS TO RECEIVE EXTERIOR INSULATION AND METAL WALL PANEL CLADDING. EXTERIOR DOORS AND WINDOWS TO BE REPLACED.

CONTACT INFORMATION

ARCHITECT:

Land+Shelter, Inc.
16TH NORTH 4TH STREET/ PO BOX 550
CARBONDALE, CO 81623
p:970-963-0201
f:970-963-0289
Contact: Andrea Korber
Email: andi@landandshelter.com
Cell Phone: 970-366-1582

OWNER :

GLENWOD SPRINGS WATER DEPARTMENT
101 W 8th St, GLENWOD SPRINGS,
CO 81601
Email: MATHEW.LANGHORST@COGS.US
Contact: MATHEW LANGHORST

CONTRACTOR:

TBD
TBD
TBD
TBD
Contact: TBD

DRAWING INDEX

GENERAL:

A1.0

ARCHITECTURAL:

A3.3

A4.0

A4.1

A7.0

A8.1

COVER SHEET - PROJECT INFO./SCHEDULES 1

ROOF PLAN

ELEVATIONS

ELEVATIONS

WALL SECTIONS

DOOR & ROOF DETAILS

REVISION:

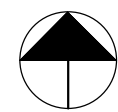
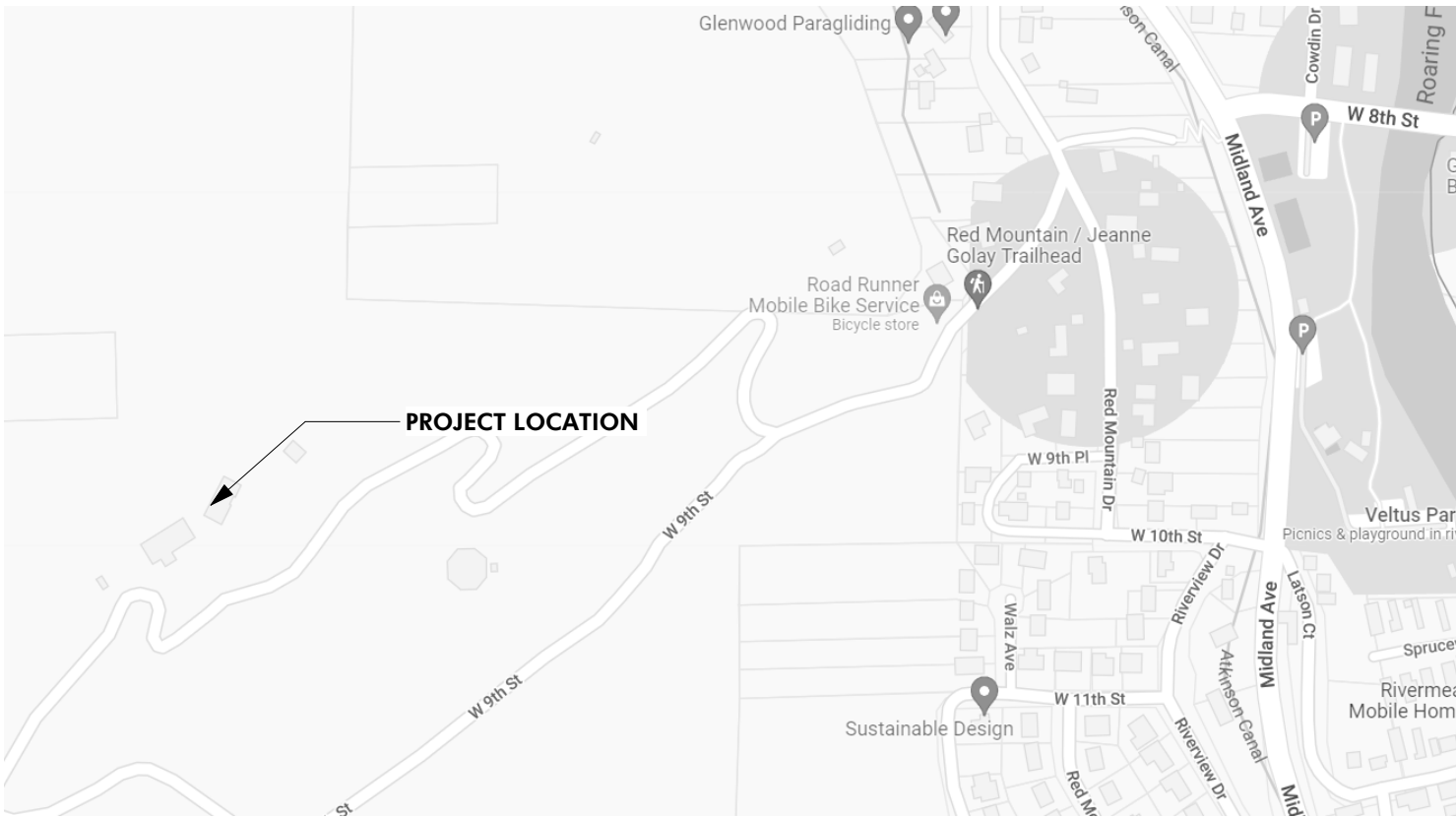
NOTICE: DUTY OF COOPERATION

Release of these plans contemplates further cooperation among the owner, his or her contractor, and the architect. Design and construction are complex. Although the architect and his/her consultants have performed their services with due care and diligence, they cannot guarantee perfection. Communication is imperfect and every contingency cannot be anticipated. Any ambiguity or discrepancy discovered by the use of these plans shall be reported immediately to the architect. Failure to notify the architect compounds misunderstanding and increases construction costs. A failure to cooperate by a simple notice to the architect shall relieve the architect from responsibility for all consequences. Changes made from the plans without consent of the architect are unauthorized and shall relieve the designer from all consequences arising out of such changes.

BID/PERMIT

JULY 19, 2022

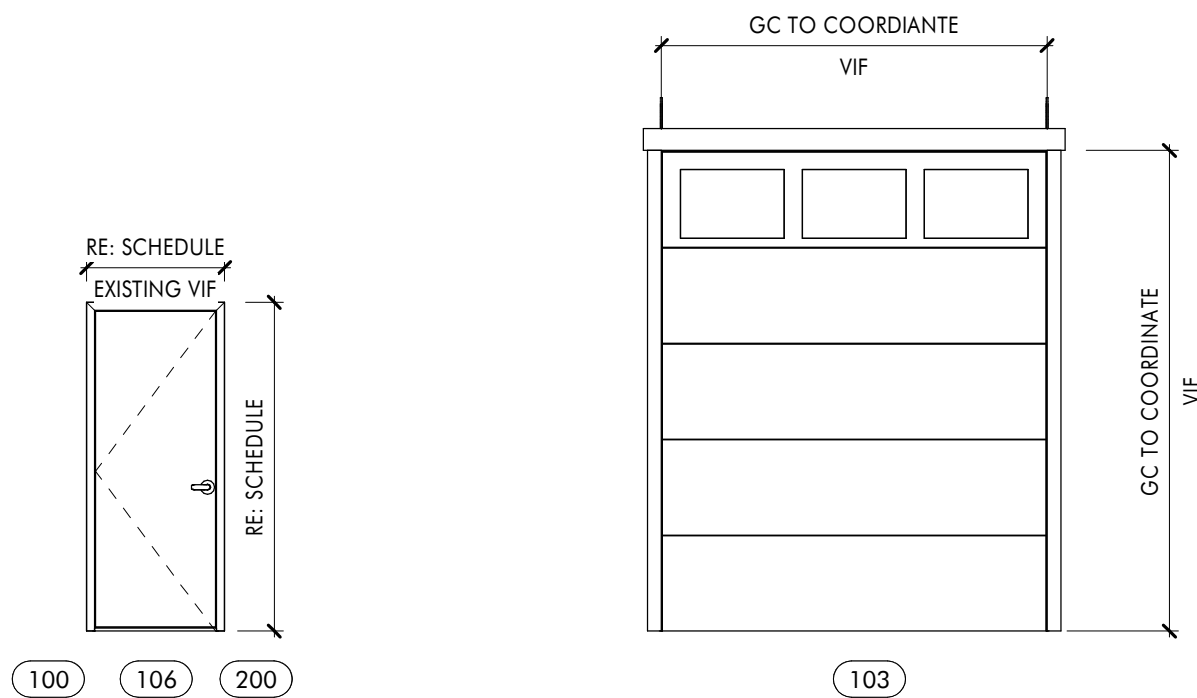
Revisions



LOCATION MAP

DOOR SCHEDULE												
MARK	ROOM NUMBER	ROOM NAME	STYLE	NOMINAL SIZE		GLAZING	FIRE RATING	HARDWARE	DOOR SILL	DOOR JAMB	DOOR HEAD	NOTES
100	100	CORRIDOR	EXTERIOR SWING	4'-0"	7'-0"	NA	NA	1				VIF VERIFY OPENING SIZE TYP. FRAME AND DOOR PAINTED TO MATCH WINDOW/FASCIA AGED BRONZE.INSULATED DOOR
103	103	CHLORINE STORAGE	SECTIONAL OVERHEAD	8'-0"	10'-0"	YES		MFR				VIF VERIFY OPENING SIZE AND COORDIANTE FINAL SIZE. AGED BRONZE FINISH TO MATCH WINDOW FRAMES
106	106	MANIFOLD ROOM	EXTERIOR SWING	3'-0"	7'-0"	NA	NA	1				VIF VERIFY OPENING SIZE TYP. FRAME AND DOOR PAINTED TO MATCH WINDOW/FASCIA AGED BRONZE.INSULATED DOOR
200	200	PLANT CONTROL	EXTERIOR SWING	3'-0"	7'-0"	NA	NA	1				VIF VERIFY OPENING SIZE TYP. FRAME AND DOOR PAINTED TO MATCH WINDOW/FASCIA AGED BRONZE.INSULATED DOOR

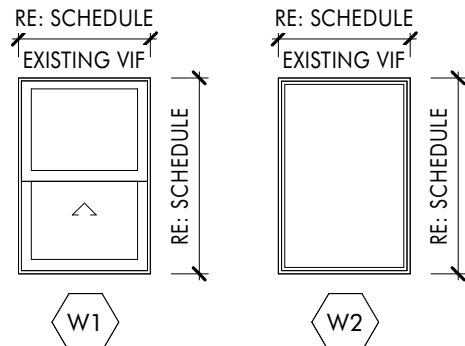
WINDOW SCHEDULE										
MARK	TYPE	ROOM NAME	ROOM NUMBER	FRAME SIZE		SASH OPERATION	WINDOW SILL	WINDOW JAMB	WINDOW HEAD	NOTES
				FRAME WIDTH	FRAME HEIGHT					
36	W2			2'-9"	4'-1"	FIXED				VIF OPENING SIZE TYP. FRAME AGED BRONZE FINISH
37	W1	OFFICE	202	2'-9"	4'-1"	BOTTOM				VIF OPENING SIZE TYP. FRAME AGED BRONZE FINISH
38	W1	OFFICE	202	2'-9"	4'-1"	BOTTOM				VIF OPENING SIZE TYP. FRAME AGED BRONZE FINISH
39	W1	OFFICE	202	2'-9"	4'-1"	BOTTOM				VIF OPENING SIZE TYP. FRAME AGED BRONZE FINISH
40	W1	OFFICE	202	2'-9"	4'-1"	BOTTOM				VIF OPENING SIZE TYP. FRAME AGED BRONZE FINISH
41	W4	OFFICE	202	2'-9"	4'-6"	BOTTOM				VIF OPENING SIZE TYP. FRAME AGED BRONZE FINISH
42	W2	MANIFOLD ROOM	106	2'-9"	4'-1"	FIXED				VIF OPENING SIZE TYP. FRAME AGED BRONZE FINISH
43	W2			2'-9"	4'-1"	FIXED				VIF OPENING SIZE TYP. FRAME AGED BRONZE FINISH
44	W2	MANIFOLD ROOM	106	2'-9"	4'-1"	FIXED				VIF OPENING SIZE TYP. FRAME AGED BRONZE FINISH
45	W2	MANIFOLD ROOM	106	2'-9"	4'-1"	FIXED				VIF OPENING SIZE TYP. FRAME AGED BRONZE FINISH
46	W1	OFFICE	202	2'-9"	4'-1"	BOTTOM				VIF OPENING SIZE TYP. FRAME AGED BRONZE FINISH
47	W1	OFFICE	202	2'-9"	4'-1"	BOTTOM				VIF OPENING SIZE TYP. FRAME AGED BRONZE FINISH
48	W1	OFFICE	202	2'-9"	4'-1"	BOTTOM				VIF OPENING SIZE TYP. FRAME AGED BRONZE FINISH
49	W1	OFFICE	202	2'-9"	4'-1"	BOTTOM				VIF OPENING SIZE TYP. FRAME AGED BRONZE FINISH



- DOOR HARDWARE SET #1**
- 3 HINGES - 8B1199, 4 1/2 4 1/2 NRP, US26D
 - 1 LOCKSET - 3553 LEVER-ENTRY
 - 1 CLOSER - 5100 ALM
 - 1 KICKPLATE (PUSH SIDE) 190S 10X32" US32D
 - 1 WALL STOP 232 W/236W (AS REQ.) US32D
 - 1 DOOR SWEEP 750S N X LAR, CLR
 - 1 THRESHOLD 413S X LAR, MIL
 - 1 LATCH GUARD 341C-US32D
 - DOOR SILENCER 307D. GRAY (AS REQ)

HOLLOW METAL DOOR AND FRAME:

- 16 GAUGE WELDED FRAME
- 7 GAUGE HINGE REINFORCEMENT
- 12 GAUGE STRIKE PROTECTION
- 16 GAUGE DOOR LEAF
- INSULATED CORE
- FACTORY PRIMED FOR PAINT



NOT FOR CONSTRUCTION

Job Site:

GLENWOOD SPRINGS WATER
FILTER PLANT 81601

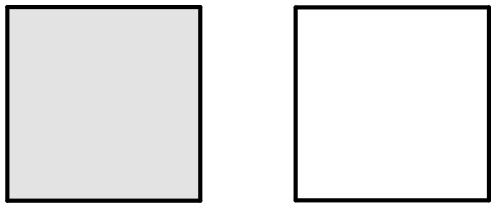
COVER SHEET - PROJECT
INFO./SCHEDULES

Sheet Number:

A1.0

GENERAL NOTES:
1. ALL DIMENSIONS ARE TO FACE OF FRAMING UNLESS NOTED OTHERWISE
2. SNOW BREAKS SHOWN FOR GENERAL DESIGN INTENT. VERIFY FINAL PLACEMENT W/ MFR AND ARCH.
3. PROVIDE HEAT TAPE @ GUTTER, DOWNSPOUTS, & EAVES AS NECESSARY.
4. GUTTERS AND DOWNSPOTS AT EAVES, DOWNSPOUTS AS NEEDED.
DOWNSPOUTS SHOWN ARE DIAGRAMATIC FOR PRICING. FINAL LOCATIONS TBD. COORDINATE FINAL DOWNSPOUT LOCATION WITH ARCHITECT.

MATERIAL LEGEND



KEY:

DS
○ DOWNSPOUT

GENERAL NOTE: GC TO MAINTAIN 12'-0" CLEAR ZONE FROM FACE OF BUILDING ON ALL FOUR (4) SIDES DURING CONSTRUCTION FOR CLEAR ACCESS. THIS STRUCTURE WILL NOT STOP ACTIVTYS DURING CONSTRUCTION. ALL CUTTING AND SUCH ACTIVITIES ARE TO BE OUTSIDE THIS CLEAR ZONE.

NOTICE: DUTY OF COOPERATION

Release of these plans contemplates further cooperation among the owner, his or her contractor, and the architect. Design and construction are complex. Although the architect and his/her consultants have performed their services with due care and diligence, they cannot guarantee perfection. Communication is imperfect and every contingency cannot be anticipated. Any ambiguity or discrepancy discovered by the use of these plans shall be reported immediately to the architect. Failure to notify the architect compounds misunderstanding and increases construction costs. A failure to cooperate by a simple notice to the architect shall relieve the architect from responsibility for all consequences. Changes made from the plans without consent of the architect are unauthorized and shall relieve the designer from all consequences arising out of such changes.

BID/PERMIT
JULY 19, 2022
Revisions



GLENWOOD SPRINGS
WATER FILTER PLANT
BID/PERMIT

NOT FOR CONSTRUCTION

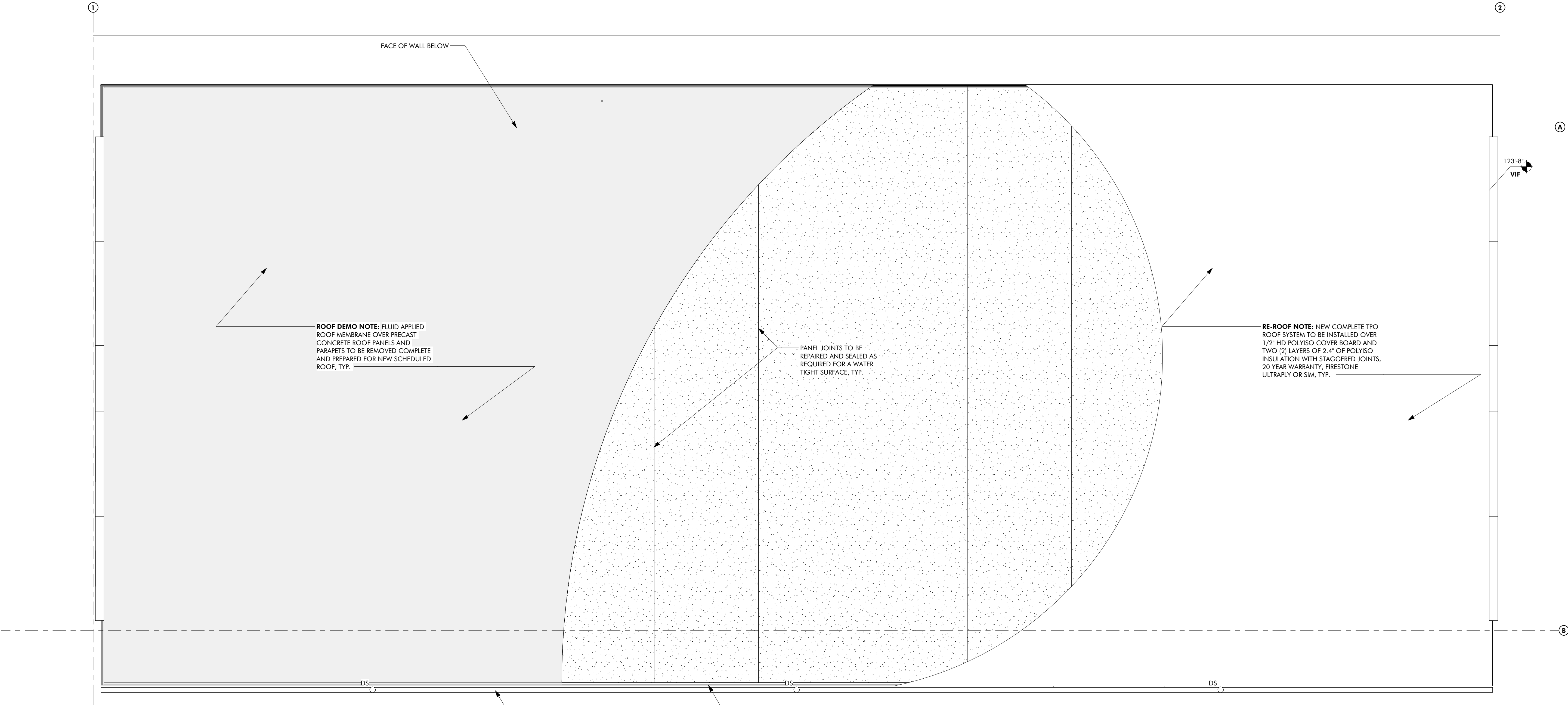
Job Site:

GLENWOOD SPRINGS WATER
FILTER PLANT 81601

ROOF PLAN

Sheet Number:

A3.3



ROOF PLAN
1/4" = 1'-0"

1



Land+Shelter
ARCHITECTURE AND PLANNING
16 North 4th Street, Carbondale, CO 81623
t 970.963.0201 info@landandshelter.com

NOTICE: DUTY OF COOPERATION
Release of these plans contemplates further cooperation among the owner, his or her contractor, and the architect. Design and construction are complex. Although the architect and his/her consultants have performed their services with due care and diligence, they cannot guarantee perfection. Communication is imperfect and every contingency cannot be anticipated. Any ambiguity or discrepancy discovered by the use of these plans shall be reported immediately to the architect. Failure to notify the architect compounds misunderstanding and increases construction costs. A failure to cooperate by a simple notice to the architect shall relieve the architect from responsibility for all consequences. Changes made from the plans without consent of the architect are unauthorized and shall relieve the designer from all consequences arising out of such changes.

BID/PERMIT
JULY 19, 2022
Revisions



GLENWOOD SPRINGS WATER FILTER PLANT BID/PERMIT

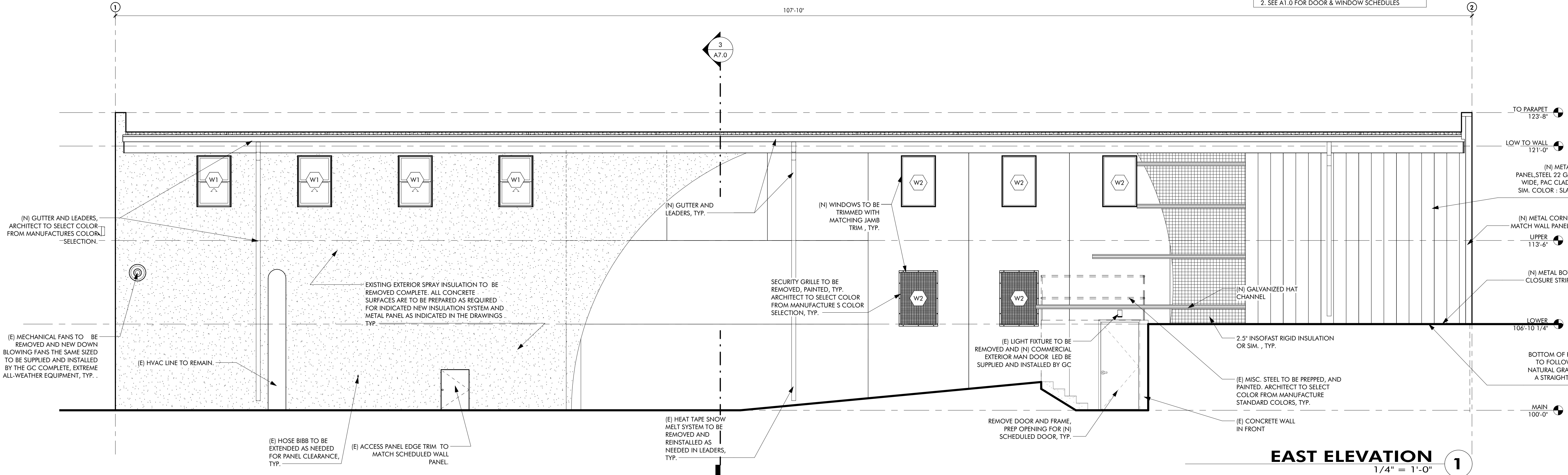
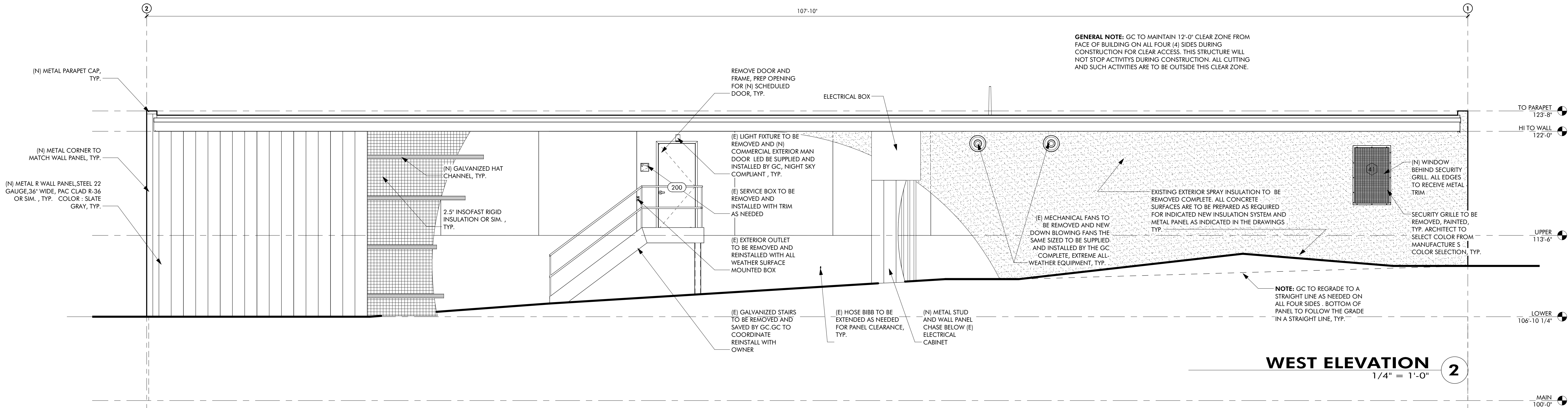
NOT FOR CONSTRUCTION

Job Site:
GLENWOOD SPRINGS WATER
FILTER PLANT 81601

ELEVATIONS

Sheet Number:

A4.0





BID/PERMIT
 JULY 19.2022
 Revisions

GLENWOOD SPRINGS WATER FILTER PLANT BID/PERMIT

Job Site:

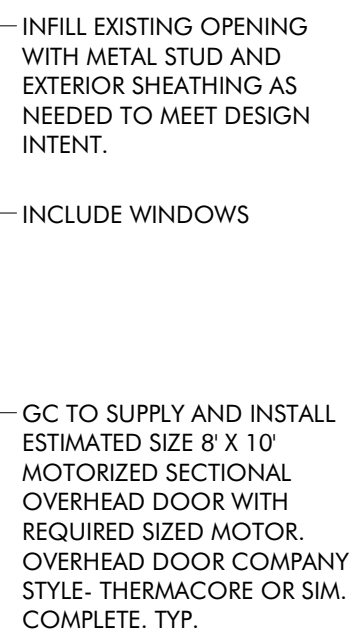
GLENWOOD SPRINGS WATER
FILTER PLANT 81601

Sheet Number:

GENERAL NOTE: GC TO MAINTAIN 12'-0" CLEAR ZONE FROM FACE OF BUILDING ON ALL FOUR (4) SIDES DURING CONSTRUCTION FOR CLEAR ACCESS. THIS STRUCTURE WILL NOT STOP ACTIVITIES DURING CONSTRUCTION. ALL CUTTING AND SUCH ACTIVITIES ARE TO BE OUTSIDE THIS CLEAR ZONE



NORTH ELEVATION 2



SOUTH ELEVATION $1/4" = 1'-0"$ 1

OVERHEAD DOOR 3



Land+Shelter
ARCHITECTURE AND PLANNING
16 North 4th Street, Carbondale, CO 81623
t 970.963.0201 i info@landandshelter.com

NOTICE: DUTY OF COOPERATION
Release of these plans contemplates further cooperation among the owner, his or her contractor, and the architect. Design and construction are complex. Although the architect and his/her consultants have performed their services with due care and diligence, they cannot guarantee perfection. Communication is imperfect and every contingency cannot be anticipated. Any ambiguity or discrepancy discovered by the use of these plans shall be reported immediately to the architect. Failure to notify the architect compounds misunderstanding and increases construction costs. A failure to cooperate by a simple notice to the architect shall relieve the architect from responsibility for all consequences. Changes made from the plans without consent of the architect are unauthorized and shall relieve the designer from all consequences arising out of such changes.

BID/PERMIT
JULY 19, 2022
Revisions



GLENWOOD SPRINGS
WATER FILTER PLANT
BID/PERMIT

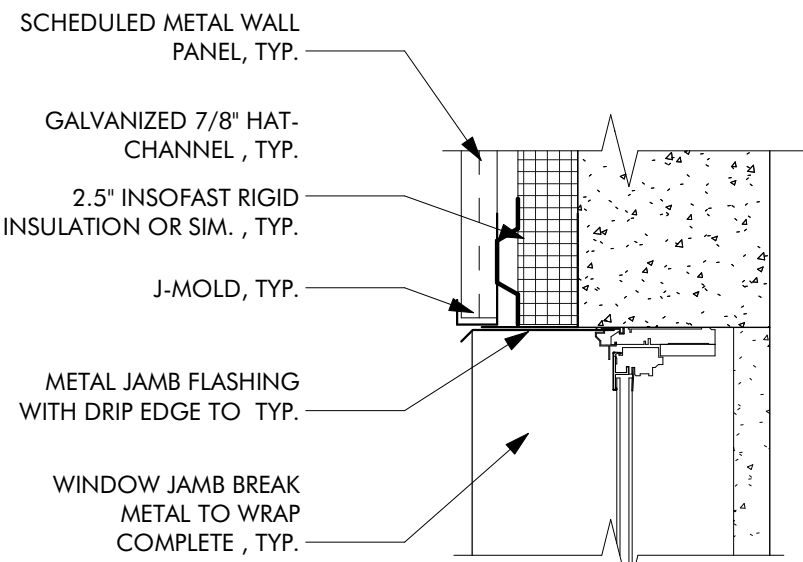
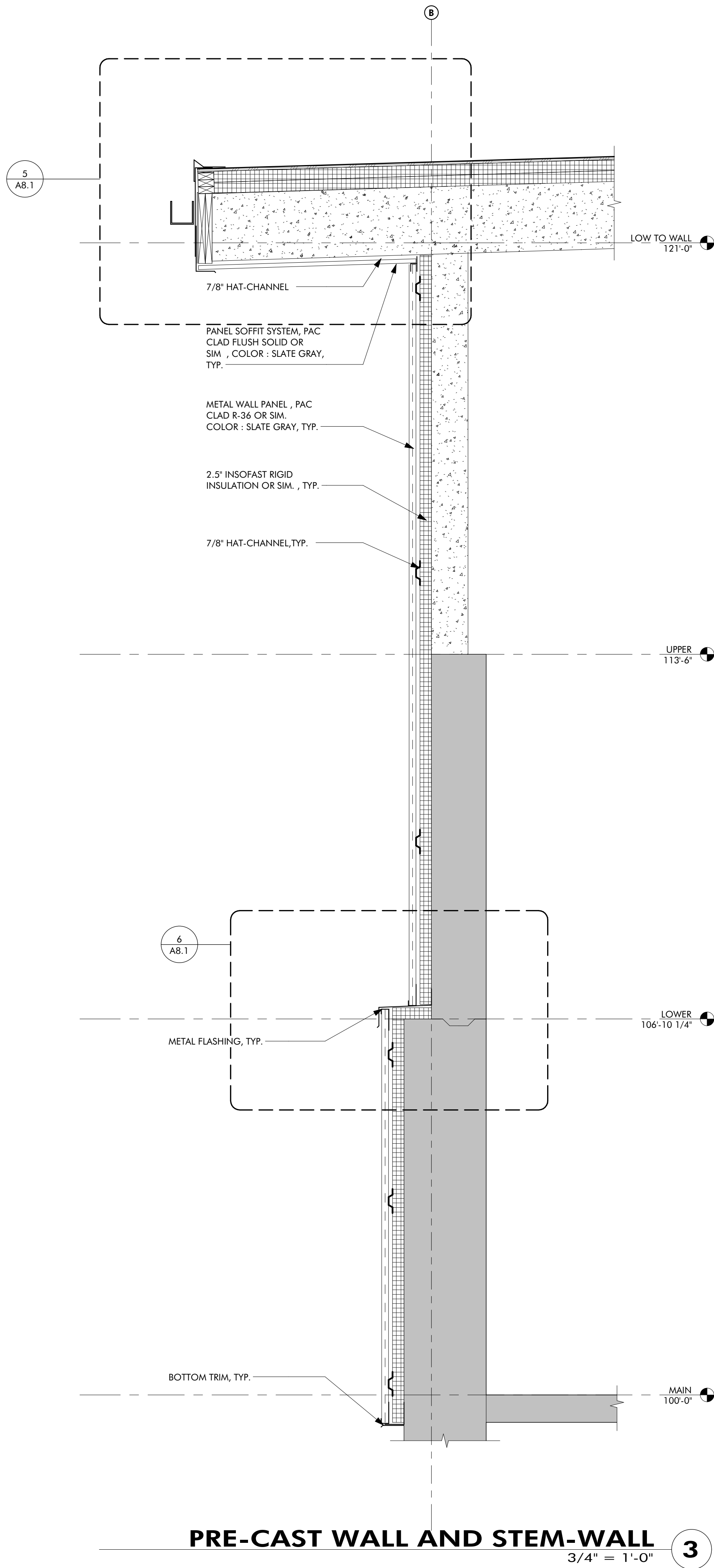
NOT FOR CONSTRUCTION

Job Site:
GLENWOOD SPRINGS WATER
FILTER PLANT 81601

WALL SECTIONS

Sheet Number:

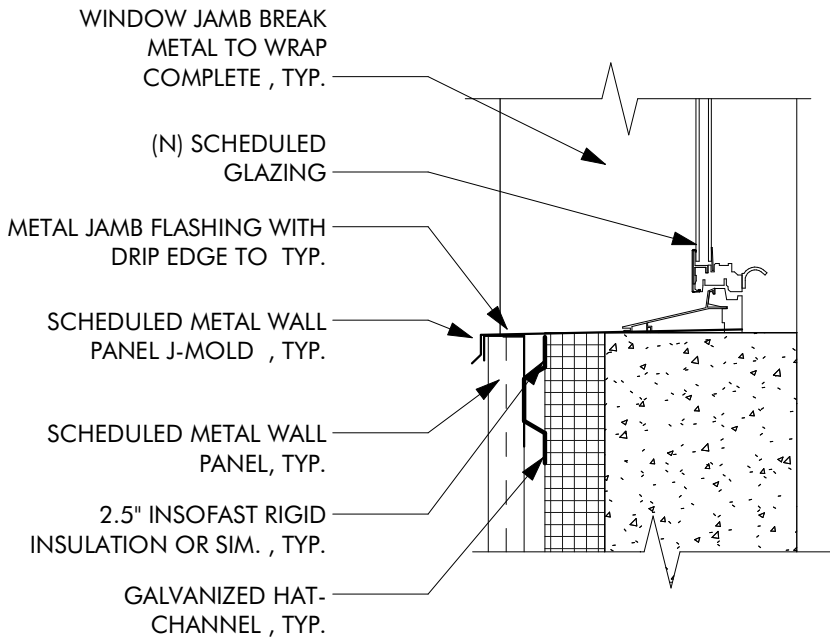
A7.0



WINDOW HEAD DETAIL

1 1/2" = 1'-0"

1



WINDOW SILL DETAIL

1 1/2" = 1'-0"

2

PRE-CAST WALL AND STEM-WALL

3/4" = 1'-0"

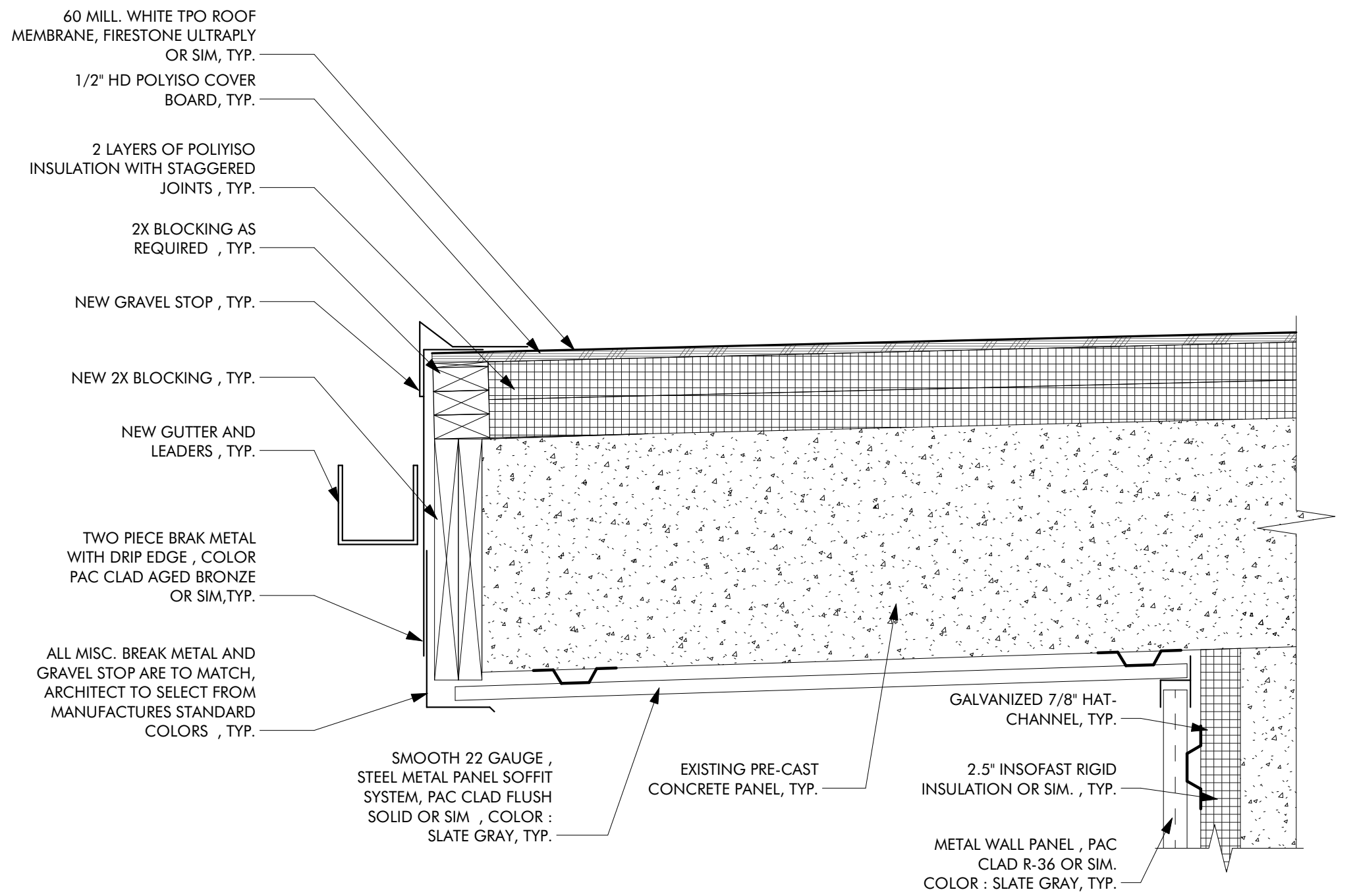
3



Land+Shelter
ARCHITECTURE AND PLANNING
16 North 4th Street, Carbondale, CO 81623
t 970.963.0201 info@landandshelter.com

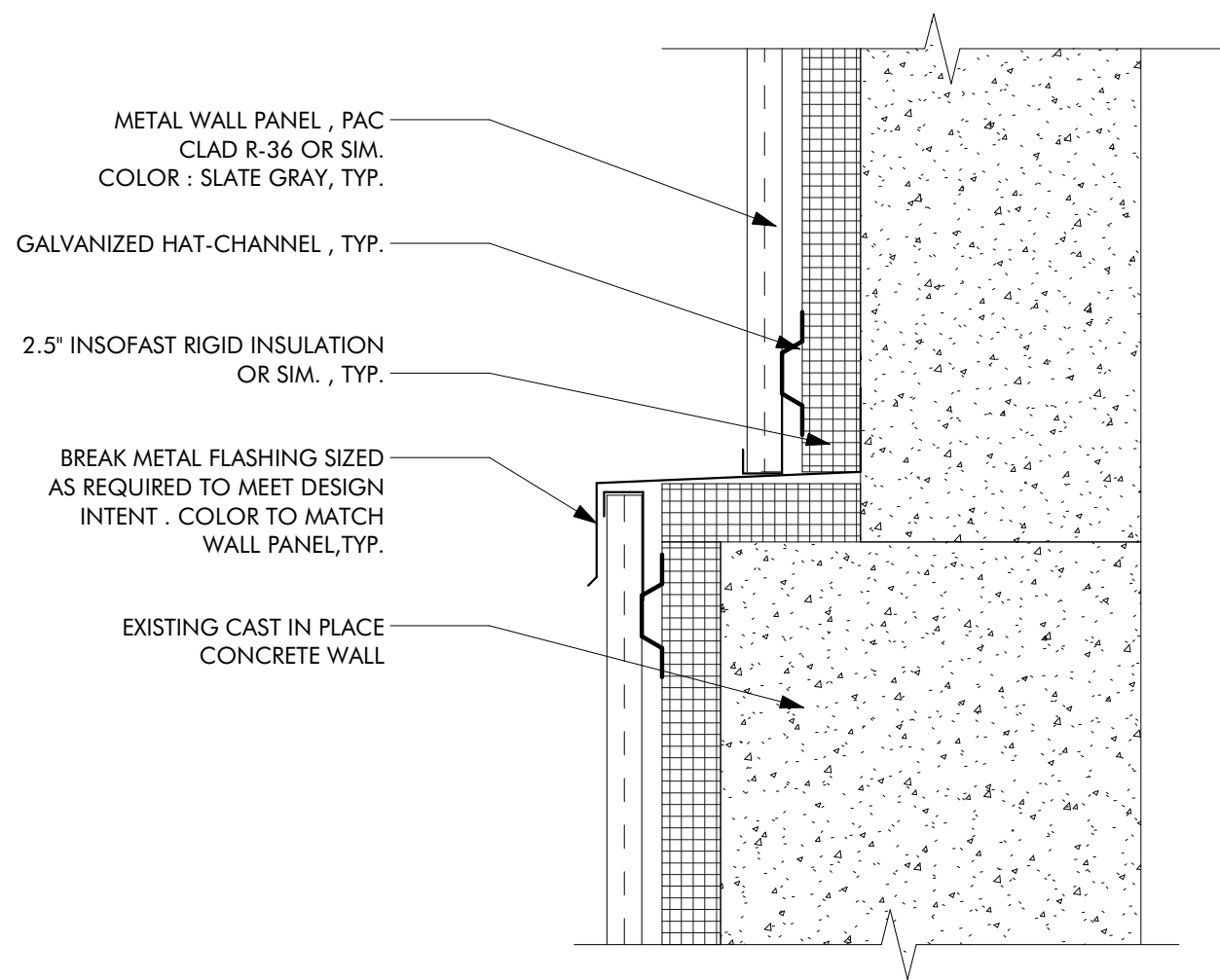
NOTICE: DUTY OF COOPERATION
Release of these plans contemplates further cooperation among the owner, his or her contractor, and the architect. Design and construction are complex. Although the architect and his/her consultants have performed their services with due care and diligence, they cannot guarantee perfection. Communication is imperfect and every contingency cannot be anticipated. Any ambiguity or discrepancy discovered by the use of these plans shall be reported immediately to the architect. Failure to notify the architect compounds misunderstanding and increases construction costs. A failure to cooperate by a simple notice to the architect shall relieve the architect from responsibility for all consequences. Changes made from the plans without consent of the architect are unauthorized and shall relieve the designer from all consequences arising out of such changes.

BID/PERMIT
JULY 19, 2022
Revisions



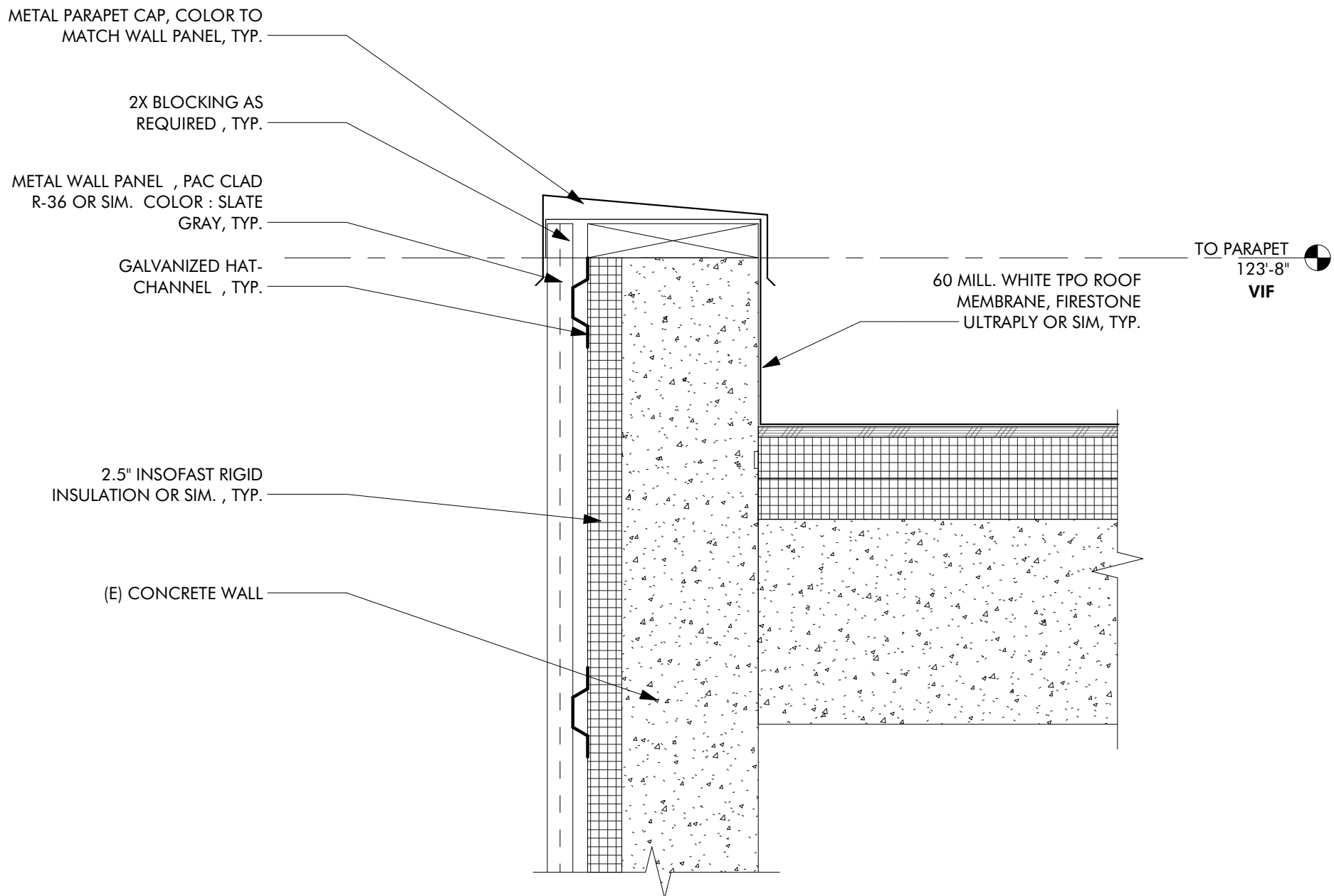
FASCIA REPAIR DETAIL
1 1/2" = 1'-0"

5



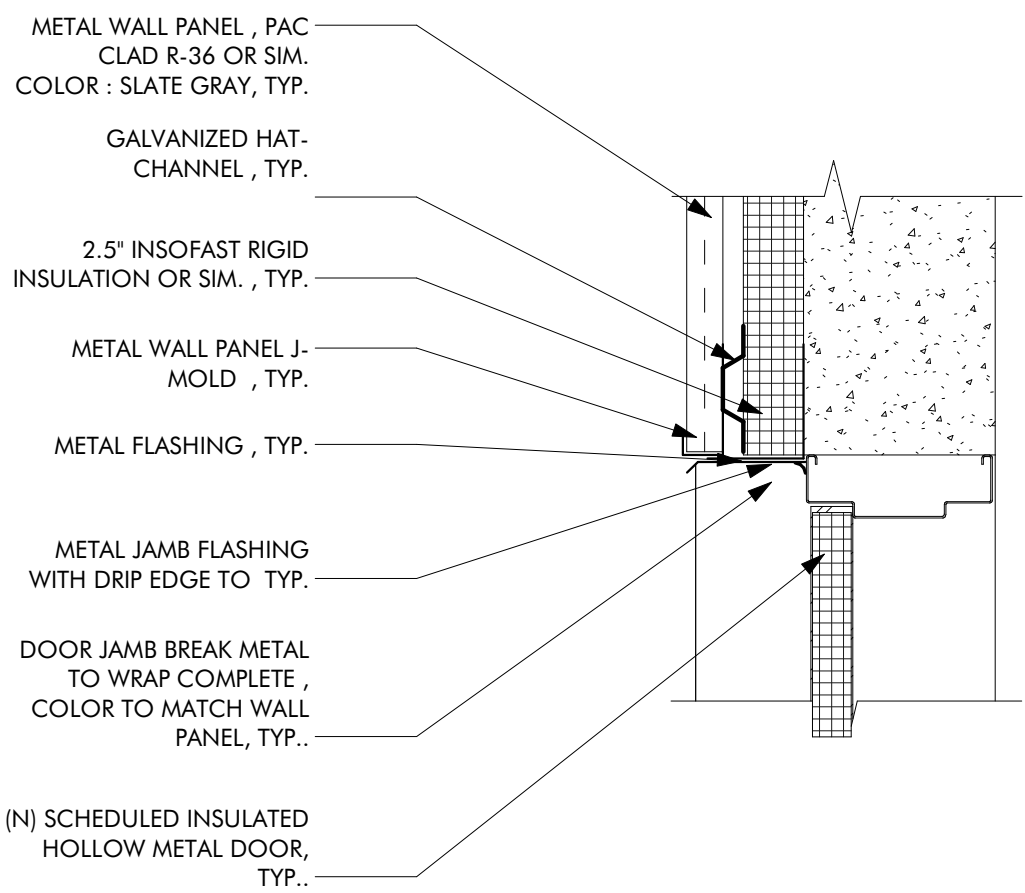
STEM-WALL CONNECTION DETAIL
1 1/2" = 1'-0"

6



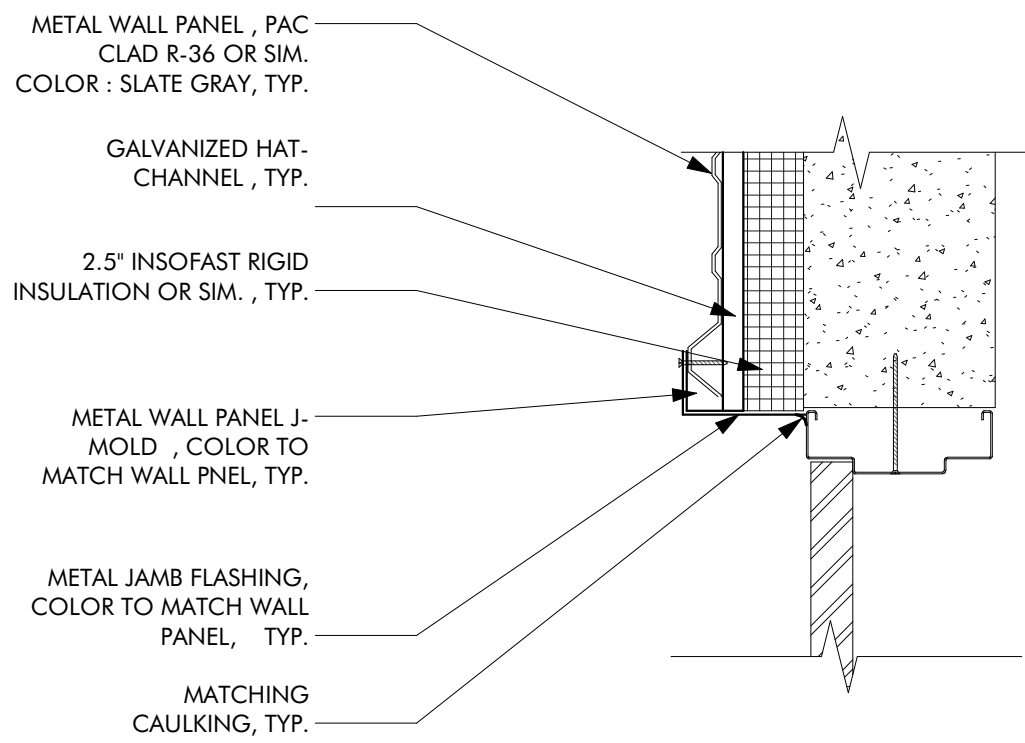
PARAPET TO ROOF DETAIL
1 1/2" = 1'-0"

4



HOLLOW METAL DOOR HEAD DETAIL
1 1/2" = 1'-0"

3



HM DOOR JAMB DETAIL
1 1/2" = 1'-0"

1

**GLENWOOD SPRINGS
WATER FILTER PLANT
BID/PERMIT**

NOT FOR CONSTRUCTION

Job Site:
GLENWOOD SPRINGS WATER
FILTER PLANT 81601

DOOR & ROOF DETAILS

Sheet Number:

A8.1