

ROOFTOP HVAC UNIT SCHEDULE

TAG	AREA SERVED	MANUF.	MODEL	SUPPLY FAN	SUPPLY FAN	AIR FLOW		OUTSIDE	TOTAL / SENSIBLE	COOLING CONDITIONS			HEATING CAP	HEATING CONDITIONS		POWER REQUIRED	UNIT	UNIT	POWER	ECONOMIZER	CONTROLS	WEIGHT	NOTES
				TYPE	DRIVE TYPE	CFM	EXT. STATIC		AIR, CFM	GROSS COOLING	EAT db/wb °F	LAT db/wb °F	AMBIENT °F	MBH	EAT	LAT			V/PH/Hz				
RTU-1	SOUTH & SOUTHWEST OFFICE AREA	CARRIER	48TCDM12A3M6	-	BELT	4200	1	400	103.7 / 96.9	78 / 59	-	100	144	63	93.9	460/360	29	40	YES	DRY BULB	PROGRAMMABLE T'STAT	1300	1, 2, 3, 5, 7
RTU-2	NORTHWEST OFFICE AREA	CARRIER	48GCEM06A3M6	-	DIRECT	1990	1	155	52.0 / 46.4	77 / 59	-	100	88	62	100.8	460/360	15	20	YES	DRY BULB	PROGRAMMABLE T'STAT	1000	1, 2, 3, 5
RTU-3	NORTH & CORE OFFICE AREA	CARRIER	48HCED07B2M6	-	BELT	2400	1	515	61.7 / 61.4	80 / 60	-	100	100	56	93.6	460/360	19	25	YES	DRY BULB	PROGRAMMABLE T'STAT	1200	1, 2, 3, 5, 7
RTU-4	CLEAN ROOM 112	CARRIER	48GCDM04A2A6	-	DIRECT	1200	1	230	27.7 / 25.5	78 / 59	-	100	54	63	102.5	460/360	11	15	YES	DRY BULB	PROGRAMMABLE T'STAT	1000	1, 2, 3, 4

SPLIT SYSTEM SCHEDULE

TAG	AREA SERVED	MANUFACTURER	MODEL	NET TOTAL COOLING CAP. MBH	NET TOTAL HEATING CAP. MBH	POWER REQUIRED V/PH/HZ	UNIT MCA	UNIT MOCP	CONTROLS	WEIGHT LBS	NOTES
HP-1	WAREHOUSE OFFICES	TOSHIBA CARRIER	MCY-MAP0607HS-UL	43.8	43.3	208-230/1/60	36.3	60 (CB 40A)	FACTORY INSTALLED DIGITAL	311	1, 2

AIR COOLED CONDENSING UNIT SCHEDULE

TAG	ASSOCIATED EQUIPMENT	MANUFACTURER	MODEL	COOLING MBH	SST °F	AMBIENT °F	POWER REQUIRED			CONTROLS	WEIGHT LBS	NOTES
							V/PH/HZ	MCA	MOCP			
CU-1	MA-2	CARRIER	38APD027	287	40	100	460/360	58.6	80	RE: SPECIFICATIONS	1400	1, 2

FAN COIL SCHEDULE

TAG	AREA SERVED	MANUFACTURER	MODEL	BLOWER				OUTSIDE AIR, CFM	POWER				D.X. COOLING				H.E.A.T.I.N.G CAPACITY MBH	CONTROLS	WEIGHT LBS	NOTES / ACCESSORIES
				CFM	E.S.P. INCH W.C.	HP	DRIVE		V/PH/HZ	MCA	MOCP	CAPACITY TOTAL MBH	CAPACITY SENSIBLE MBH	EAT DBWB °F	SATUR. SUCTION TEMP. °F	ROWS	AIR DIFF. PRESSURE IN. W.C.			
FC-1	WAREHOUSE OFFICES 1ST LEVEL	TOSHIBA CARRIER	MMD-AP0216BHPUL	700	0.5	-	DIRECT	75	208/1/60	2.23	15	21.0	16.7	80	-	-	-	WIRED WALL-MOUNTED CONTROLLER	93	1, 2
FC-2	WAREHOUSE OFFICES 2ND LEVEL	TOSHIBA CARRIER	MMD-AP0216BHPUL	700	0.5	-	DIRECT	80	208/1/60	2.23	15	21.0	16.7	80	-	-	-	WIRED WALL-MOUNTED CONTROLLER	93	1, 2

FAN SCHEDULE

TAG	AREA SERVED	MANUFACTURER	MODEL	TYPE	AIR FLOW		DRIVE TYPE	MOTOR HP	SOUND dBA	SONES	POWER REQUIRED		ACCESSORIES		CONTROLS	WEIGHT LBS.	NOTES
					CFM	IN. W.C.					V / PH / HZ	FLA					
EF-1	WOMEN, MEN, JANITOR	GREENHECK	CUE-095-0	UPBLAST ROOF FAN	330	0.5	DIRECT	1/8	56	7.7	115/1/60	-	ROOF CURB, SPEED CONTROL, BDD		PROGRAMMABLE LIGHTING CONTROLLER BY E.C.	50	1, 2
EF-2	HOOD KH-1	GREENHECK	CUBE-220HP-VGD	RESTAURANT ROOF FAN, ECM	3600	1.25	BELT	2	67	15.4	460/360	-	ROOF CURB WITH HINGED TOP		CONTROLLER PROVIDED WITH HOOD	200	1, 2
EF-3	HOOD KH-2	GREENHECK	CUBE-220HP-VGD	RESTAURANT ROOF FAN, ECM	3600	1.25	BELT	2	67	15.4	460/360	-	ROOF CURB WITH HINGED TOP		CONTROLLER PROVIDED WITH HOOD	200	1, 2
EF-4	WAREWASHER	GREENHECK	CUE-099-VG	UPBLAST ROOF FAN, ECM	600	0.75	DIRECT	1/4	57	8.7	115/1/60	-	ROOF CURB, SPEED CONTROL		MA-2 CONTROLS	50	1, 2
EF-5	TOILET AT CHECK-IN	GREENHECK	SP-B110	CEILING	70	0.5	DIRECT	-	-	-	115/1/60	1.15	SOLID STATE SPEED CONTROL		PROGRAMMABLE LIGHTING CONTROLLER BY E.C.	-	1, 2
EF-6	JANITOR AT CHECK-IN	GREENHECK	SP-B110	CEILING	50	0.5	DIRECT	-	-	-	115/1/60	1.15	SOLID STATE SPEED CONTROL		PROGRAMMABLE LIGHTING CONTROLLER BY E.C.	-	1, 2
EF-7	TOILET NEAR KITCHEN	GREENHECK	SP-A200	CEILING	100	0.5	DIRECT	-	46	3.5	115/1/60	0.46	SOLID STATE SPEED CONTROL		PROGRAMMABLE LIGHTING CONTROLLER BY E.C.	24	1, 2
EF-8	TOILET NEAR KITCHEN	GREENHECK	SP-A200	CEILING	100	0.5	DIRECT	-	46	3.5	115/1/60	0.46	SOLID STATE SPEED CONTROL		PROGRAMMABLE LIGHTING CONTROLLER BY E.C.	24	1, 2
CF-1	I T 179	GREENHECK	SP-A900	CEILING	400	0.25	DIRECT	-	-	-	115/1/60	3.0	SOLID STATE SPEED CONTROL		LINE VOLTAGE THERMOSTAT BY M.C.	-	1, 2
CF-2	I T 170	GREENHECK	SP-A900	CEILING	400	0.25	DIRECT	-	-	-	115/1/60	3.0	SOLID STATE SPEED CONTROL		LINE VOLTAGE THERMOSTAT BY M.C.	-	1, 2
SF-1	CHECK-IN OFFICES	GREENHECK	CSP-A250	CABINET INLINE	160	0.5	DIRECT	-	41	2.5	115/1/60	0.56	SOLID STATE SPEED CONTROL		PROGRAMMABLE LIGHTING CONTROLLER BY E.C.	-	1, 2

KITCHEN HOOD SCHEDULE

TAG	SERVICE	MANUFACTURER	MODEL	TYPE	DIMENSIONS L X D X H	AIR FLOW CFM	PRESSURE DROP, IN. W.C.	DUCT COLLAR L X W, INCHES	LIGHTS	ACCESSORIES	CONTROLS	WEIGHT LBS	NOTES
KH-1	KITCHEN EQUIPMENT NORTH	REFER TO KITCHEN	-	WALL CANOPY HOOD & SA PLENUM	-	3600	0.51	-	-	-	-	-	-
KH-2	KITCHEN EQUIPMENT SOUTH	CONSULTANT DOCS	-	WALL CANOPY HOOD & SA PLENUM	-	3600	0.51	-	-	-	-	-	-

MAKEUP AIR UNIT SCHEDULE

TAG	AREA SERVED	MANUF.	MODEL	SUPPLY FAN			AIR FLOW		OUTSIDE AIR, CFM	TOTAL / SENSIBLE NET COOLING CAPACITY MBH	COOLING CONDITIONS			HEATING CAP. OUTPUT MBH	HEATING CONDITIONS		POWER REQUIRED			ECONOMIZER	CONTROLS	WEIGHT LBS	NOTES
				TYPE	DRIVE	MOTOR HP	CFM	EXT. STATIC			SST °F	EAT db / wb	LAT db / wb		EAT	LAT	V/PH/Hz	MCA	MOCP				
MA-1	WAREHOUSE	REZNOR	RDH-150	FC	BELT	1	1600	0.75	1600	EVAP COOLING 12", PUMP 115V, 0.92A	NA	100 / 63	-	99	5	68	460/360	2.5	15	NONE	RE: SPECIFICATION 235500 AND 230993	1020	1, 2, 3, 6
MA-2	KITCHEN	REZNOR	RPBL-800	FC	BELT	7-1/2	7800	1.0	7800	DX COIL: 268 MBH / 268 MBH	40	100 / 63	-	522	5	61	460/360	11.12	20	DRY BULB	RE: SPECIFICATION 235500 AND 230993	3000	1, 2, 3, 7

UNIT HEATER SCHEDULE

TAG	AREA SERVED	MANUFACTURER	MODEL	AIR FLOW		OUTSIDE AIR, CFM	BLOWER TYPE	RPM	POWER V/PH/HZ	HP	HEATING OUTPUT MBH	TEMP. RISE °F	POWER REQUIRED			CONTROLS	WEIGHT LBS	NOTES
				CFM	P EXT. IN. W.C.								V/PH/HZ	FLA	MOCP			
UH-1	WAREHOUSE	REZNOR	UDX 75	960	0	0	PROP	1550	115/1/60	0.06	50.8	-	115/1/60	3.7	15	THERMOSTAT, 24VAC	76	1, 2
UH-2	WAREHOUSE	REZNOR	UDX 75	960	0	0	PROP	1550	115/1/60	0.06	50.8	-	115/1/60	3.7	15	THERMOSTAT, 24VAC	76	1, 2
UH-3	WAREHOUSE	REZNOR	UDX 75	960	0	0	PROP	1550	115/1/60	0.06	50.8	-	115/1/60	3.7	15	THERMOSTAT, 24VAC	76	1, 2
UH-4	WAREHOUSE	REZNOR	UDX 75	960	0	0	PROP	1550	115/1/60	0.06	50.8	-	115/1/60	3.7	15	THERMOSTAT, 24VAC	76	1, 2
UH-5	WAREHOUSE	REZNOR	UDX 75	960	0	0	PROP	1550	115/1/60	0.06	50.8	-	115/1/60	3.7	15	THERMOSTAT, 24VAC	76	1, 2
UH-6	WAREHOUSE	REZNOR	UDX 75	960	0	0	PROP	1550	115/1/60	0.06	50.8	-	115/1/60	3.7	15	THERMOSTAT, 24VAC	76	1, 2
UH-7	WAREHOUSE	REZNOR	UDX 75	960	0	0	PROP	1550	115/1/60	0.06	50.8	-	115/1/60	3.7	15	THERMOSTAT, 24VAC	76	1, 2
UH-8	WAREHOUSE	REZNOR	UDX 75	960	0	0	PROP	1550	115/1/60	0.06	50.8	-	115/1/60	3.7	15	THERMOSTAT, 24VAC	76	1, 2
UH-9	WAREHOUSE	REZNOR	UDX 75	960	0	0	PROP	1550	115/1/60	0.06	50.8	-	115/1/60	3.7	15	THERMOSTAT, 24VAC	76	1, 2
UH-10	WAREHOUSE	REZNOR	UDX 75	960	0	0	PROP	1550	115/1/60	0.06	50.8	-	115/1/60	3.7	15	THERMOSTAT, 24VAC	76	1, 2
UH-11	WAREHOUSE	REZNOR	UDX 75	960	0	0	PROP	1550	115/1/60	0.06	50.8	-	115/1/60	3.7	15	THERMOSTAT, 24VAC	76	1, 2

GRILLES, REGISTERS AND DIFFUSERS SCHEDULE

TAG	SERVICE	TYPE	MOUNTING	THROW PATTERN	FINISH	ACCESSORIES	KRIEGER SERIES #	SIZE	NOTES
SA-1	SUPPLY AIR	DIFFUSER, ROUND NECK, SINGLE FACEPLATE	CEILING, T-BAR	4-WAY	BRITISH WHITE	-	PLO-23	AS NOTED ON PLANS	STEEL
SA-2	SUPPLY AIR	DIFFUSER, ROUND NECK, SINGLE FACEPLATE	CEILING, PLASTER FRAME	4-WAY	BRITISH WHITE	PLASTER FRAME, DAMPER	PLO-23-0BD	AS NOTED ON PLANS	STEEL, LAY INTO PLASTER FRAME, 12"x12"
SA-3	SUPPLY AIR	SUPPLY GRILLE, RECTANGULAR NECK	SIDEWALL OR DUCT	DOUBLE DEFLECTION.	BRITISH WHITE	CONCEALED SCREWS, OBD	880V-22	AS NOTED ON PLANS	STEEL, ADJUSTABLE BLADES, 3/4" CENTERS
SA-4	SUPPLY AIR	DIFFUSER, ROUND NECK, SINGLE FACEPLATE	CEILING, PLASTER FRAME	4-WAY	BRITISH WHITE	PLASTER FRAME, DAMPER	PLO-23-0BD	AS NOTED ON PLANS	STEEL, LAY INTO PLASTER FRAME
SA-5	SUPPLY AIR	DIFFUSER, SQUARE NECK, LOUVERED FACE	CEILING, T-BAR	2-WAY THROW	BRITISH WHITE	-	SH-23PC	AS NOTED ON PLANS	STEEL, ADJUSTABLE VERTICAL THROW
SA-6	SUPPLY AIR	DIFFUSER, SQUARE NECK, LOUVERED FACE	CEILING, T-BAR	1-WAY THROW	BRITISH WHITE	-	SH-23	AS NOTED ON PLANS	STEEL, FLAT THROW
RA-1	RETURN AIR	GRILLE, 1/2" CUBE CORE	CEILING, T-BAR, FRAMED	N/A	BRITISH WHITE	-	EGS-FTB	AS NOTED ON PLANS	ALUMINUM
RA-2	RETURN AIR	PERFORATED FACE	CEILING, T-BAR, FRAMED	N/A	BRITISH WHITE	-	S80P F23	AS NOTED ON PLANS	STEEL, FRAMED
RA-3	RETURN AIR	PERFORATED FACE FILTER GRILLE	CEILING, T-BAR, FRAMED	N/A	BRITISH WHITE	2" THICK FILTER HOLDER	S80P F23 05	AS NOTED ON PLANS	STEEL, FRAMED, 2" MERV 8 FILTER
EA-1	EXHAUST AIR	PERFORATED FACE	CEILING SURFACE, GYP	N/A	BRITISH WHITE	-	S80P 22	AS NOTED ON PLANS	STEEL, FRAMED
TA-1	TRANSFER AIR	GRILLE, 1/2" CUBE CORE	CEILING, GYP, FRAMED	N/A	BRITISH WHITE	-	EGCS-22	AS NOTED ON PLANS	ALUMINUM

BASEBOARD RADIANT HEATER

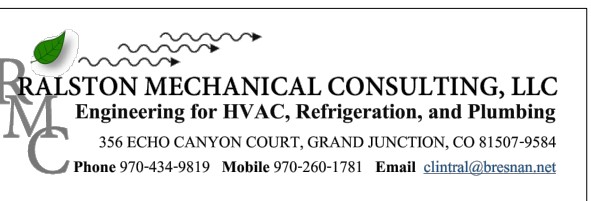
TAG	AREA SERVED	MANUFACTURER	MODEL	LENGTH	HEATING OUTPUT WATTS	POWER		CONTROLS	NOTES
						V/PH/HZ	FLA		
BB-1	WATER/MECH 143	QMARK	QMKC2575W	5 FT	1250	277/1/60	4.5	INTEGRAL THERMOSTAT	2
BB-2	ELECTRICAL144	QMARK	VMKC2576W	6 FT	1500	277/1/60	5.4	INTEGRAL THERMOSTAT	2

LOUVER SCHEDULE

TAG	SERVICE	MANUFACTURER	MODEL	TYPE	MOUNTING	PRESS. DROP AT FREE AREA VELOCITY	WATER PENETRATION AT FREE AREA VELOCITY	FINISH	ACCESSORIES	SIZE	NOTES
LR-1	RELIEF AIR	GREENHECK	ESJ-401	STATIONARY LOUVER	WALL	0.18" WC @ 1000 FT/MIN	NA	COLOR CHOSEN BY ARCHITECT	SCREEN, 1/2 INCH MESH	AS NOTED ON PLANS	REFER TO SPECIFICATIONS FOR CONSTRUCTION



437 Main Street  
Grand Junction, CO 81501  
970.242.6804  
chamberlinarchitects.com



698 LONG ACRE DRIVE  
GRAND JUNCTION, COLORADO

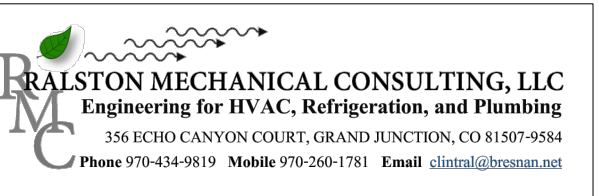
MECHANICAL SCHEDULES

NO: ISSUED FOR: DATE:



100% CONSTRUCTION DOCUMENTS  
BID PACKAGE #4, ABOVE GROUND





GENERAL NOTES

THE MECHANICAL CONTENT OF THE MECHANICAL DRAWINGS IS DIAGRAMMATIC AND NOT NECESSARILY TO SCALE.

THE CONTRACTOR SHALL MAKE MINOR ADJUSTMENTS TO LOCATIONS OF DUCTWORK, EQUIPMENT PIPING, AND SUPPORTS IN ORDER TO COORDINATE WITH BUILDING CONSTRUCTION AND WORK OF OTHER TRADES.

ALL AIR TRANSFER OPENINGS IN WALLS ABOVE CEILINGS OF ROOMS SHALL INCLUDE A SOUND ATTENUATING ELBOW. SOUND ATTENUATING ELBOWS SHALL BE SIZED PER SOUND ATTENUATING ELBOW SCHEDULE.

ALL BRANCH DUCTS SERVING ONE DIFFUSER OR EXHAUST GRILLE SHALL INCLUDE A VOLUME DAMPER AT THE BRANCH DUCT POINT OF ORIGIN, UNLESS THE GRILLE OR DIFFUSER HAS BEEN SPECIFIED TO INCLUDE A BALANCING DAMPER.

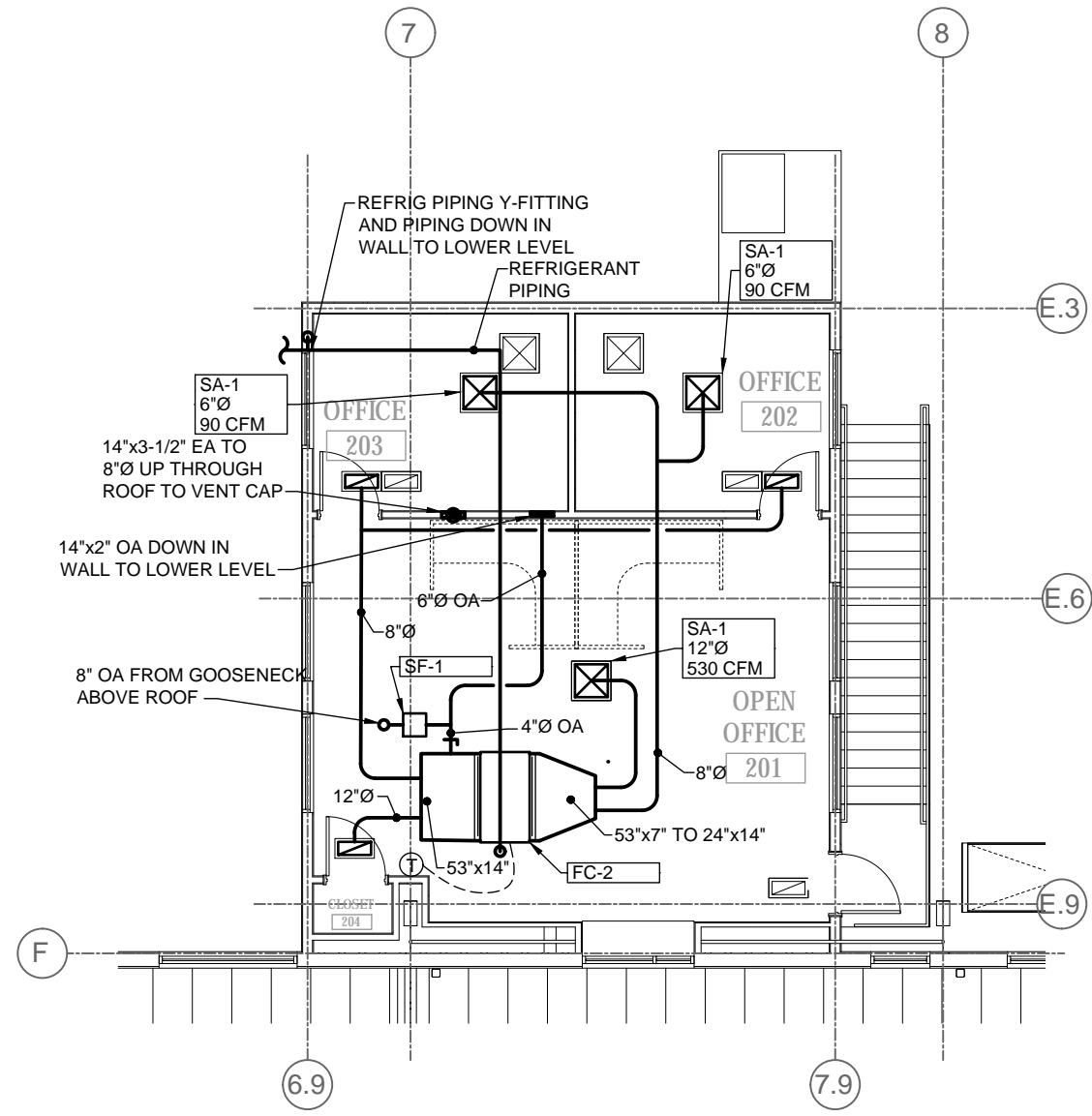
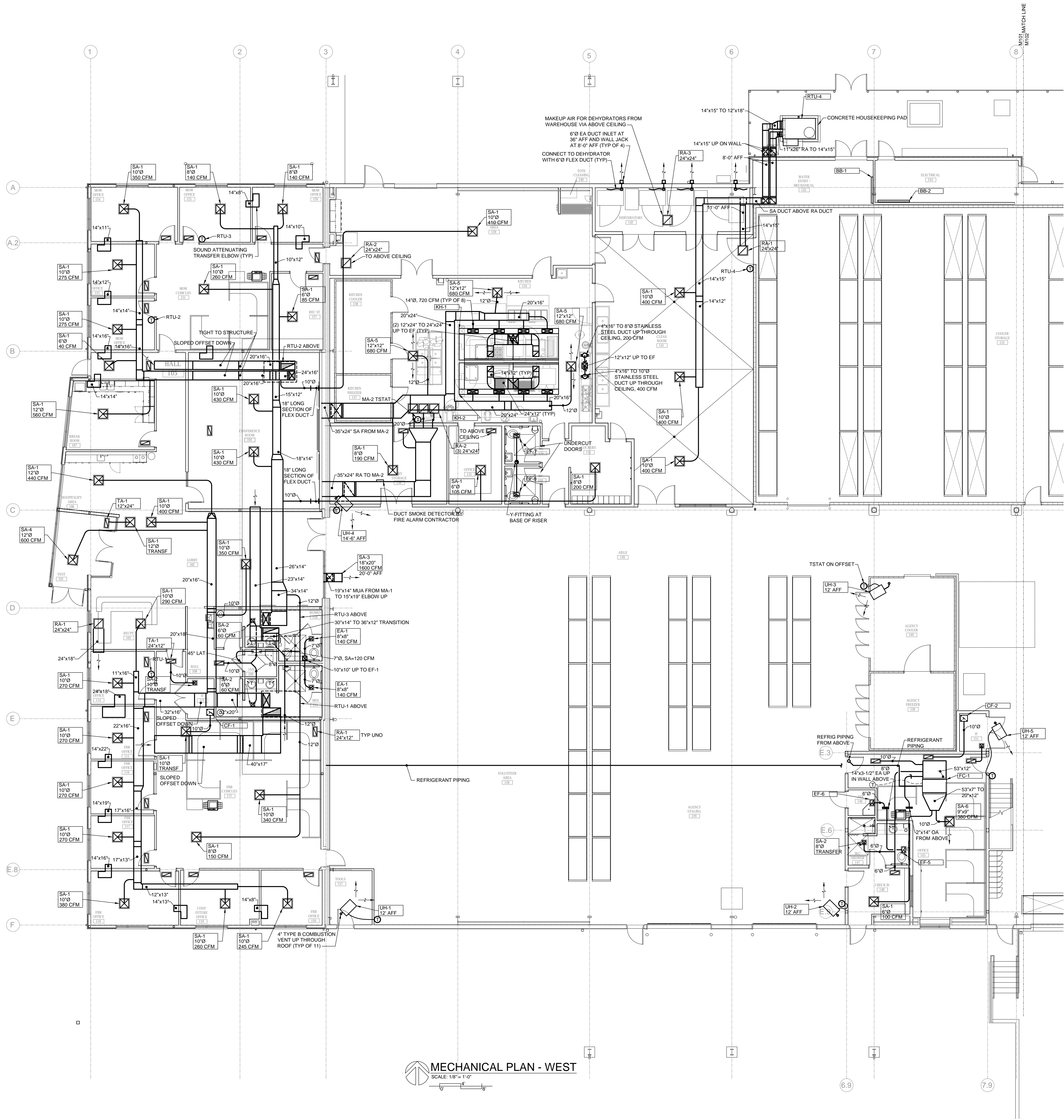
BRANCH DUCTS SERVING SINGLE DIFFUSERS SHALL BE SIZED TO MATCH THE DIFFUSER NECK SIZE UNLESS OTHERWISE INDICATED.

INDICATED DUCT DIMENSIONS ARE SHEET METAL DIMENSIONS.

RETURN GRILLES SHALL BE TYPE RA-1, 24"x12", UNLESS NOTED OTHERWISE.

REFER TO SCHEDULES AND SPECIFICATIONS FOR EQUIPMENT AND MATERIALS OF CONSTRUCTION.

ROUND DUCTS ARE INDICATED USING SINGLE LINE.



**FOOD BANK OF THE ROCKIES**

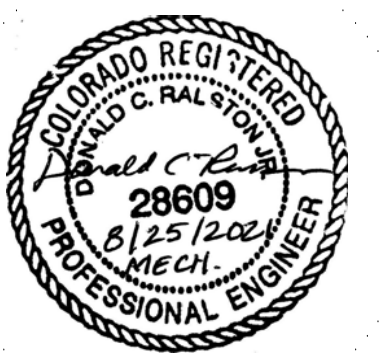
698 LONG ACRE DRIVE  
GRAND JUNCTION, COLORADO

**MAIN LEVEL  
MECHANICAL PLAN -  
WEST & SECOND  
FLOOR OFFICE**





437 Main Street  
Grand Junction, CO 81501  
970.242.6804  
chamberlinarchitects.com



## FOOD BANK OF THE ROCKIES

598 LONG ACRE DRIVE  
GRAND JUNCTION, COLORADO

# MAIN LEVEL MECHANICAL PLAN - EAST

NO: ISSUED FOR: DATE:



100% CONSTRUCTION DOCUMENTS  
BID PACKAGE #4, ABOVE GROUND

DATE: 08/25/2021 SHEET NO:

PROJECT NO: **M102**

## M102

©2020 CHAMBERLIN ARCHITECTS

### GENERAL NOTES

THE MECHANICAL CONTENT OF THE MECHANICAL DRAWINGS IS DIAGRAMMATIC AND NOT NECESSARILY TO SCALE.

THE CONTRACTOR SHALL MAKE MINOR ADJUSTMENTS TO LOCATIONS OF DUCTWORK, EQUIPMENT, PIPING, AND SUPPORTS IN ORDER TO COORDINATE WITH BUILDING CONSTRUCTION AND WORK OF OTHER TRADES.

ALL AIR TRANSFER OPENINGS IN WALLS ABOVE CEILINGS OF ROOMS SHALL INCLUDE A SOUND ATTENUATING ELBOW. SOUND ATTENUATING ELBOWS SHALL BE SIZED PER SOUND ATTENUATING ELBOW SCHEDULE.

ALL BRANCH DUCTS SERVING ONE DIFFUSER OR EXHAUST GRILLE SHALL INCLUDE A VOLUME DAMPER AT THE BRANCH DUCT POINT OF ORIGIN, UNLESS THE GRILLE OR DIFFUSER HAS BEEN SPECIFIED TO INCLUDE A BALANCING DAMPER.

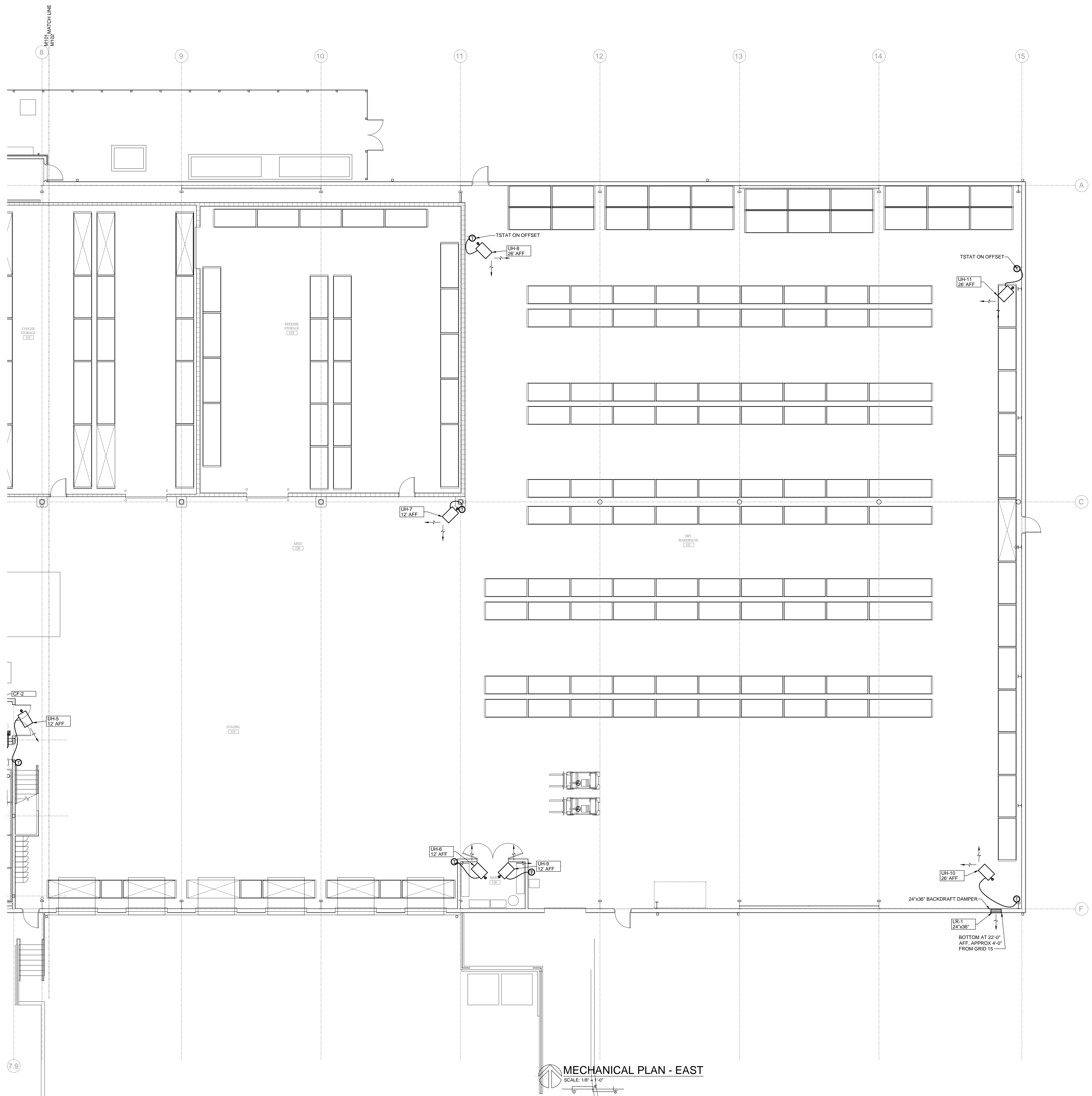
BRANCH DUCTS SERVING SINGLE DIFFUSERS SHALL BE SIZED TO MATCH THE DIFFUSER NECK SIZE UNLESS OTHERWISE INDICATED.

INDICATED DUCT DIMENSIONS ARE SHEET METAL DIMENSIONS.

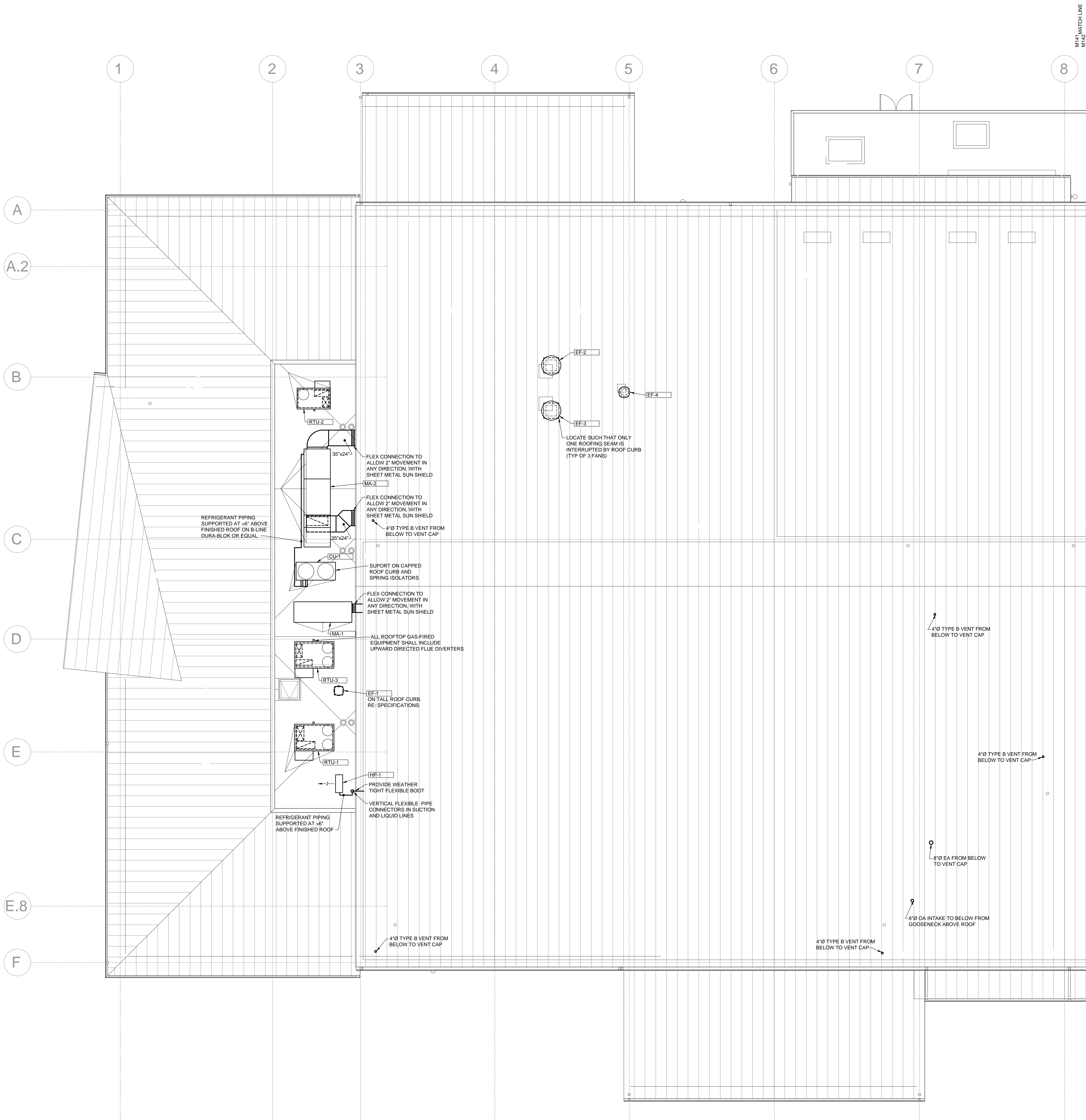
RETURN GRILLES SHALL BE TYPE RA-1, 24"x12", UNLESS NOTED OTHERWISE.

REFER TO SCHEDULES AND SPECIFICATIONS FOR EQUIPMENT AND MATERIALS OF CONSTRUCTION.

ROUND DUCTS ARE INDICATED USING SINGLE LINE.







GENERAL NOTES

THE MECHANICAL CONTENT OF THE MECHANICAL DRAWINGS IS DIAGRAMMATIC AND NOT NECESSARILY TO SCALE.

THE CONTRACTOR SHALL MAKE MINOR ADJUSTMENTS TO LOCATIONS OF DUCTWORK, EQUIPMENT, PIPING, AND SUPPORTS IN ORDER TO COORDINATE WITH BUILDING CONSTRUCTION AND WORK OF OTHER TRADES.

ALL AIR TRANSFER OPENINGS IN WALLS ABOVE CEILINGS OF ROOMS SHALL INCLUDE A SOUND ATTENUATING ELBOW. SOUND ATTENUATING ELBOWS SHALL BE SIZED PER SOUND ATTENUATING ELBOW SCHEDULE.

ALL BRANCH DUCTS SERVING ONE DIFFUSER OR EXHAUST GRILLE SHALL INCLUDE A VOLUME DAMPER AT THE BRANCH DUCT POINT OF ORIGIN, UNLESS THE GRILLE OR DIFFUSER HAS BEEN SPECIFIED TO INCLUDE A BALANCING DAMPER.

BRANCH DUCTS SERVING SINGLE DIFFUSERS SHALL BE SIZED TO MATCH THE DIFFUSER NECK SIZE UNLESS OTHERWISE INDICATED.

INDICATED DUCT DIMENSIONS ARE SHEET METAL DIMENSIONS.

RETURN GRILLES SHALL BE TYPE RA-1, 24"x12", UNLESS NOTED OTHERWISE.

REFER TO SCHEDULES AND SPECIFICATIONS FOR EQUIPMENT AND MATERIALS OF CONSTRUCTION.

ROUND DUCTS ARE INDICATED USING SINGLE LINE.

CA

chamberlin

437 Main Street  
Grand Junction, CO 81501  
970.242.6804  
chamberlinarchitects.com



REALSTON MECHANICAL CONSULTING, LLC

Engineering for HVAC, Refrigeration, and Plumbing

350 REDO CANYON COURT, GRAND JUNCTION, CO 81507-9584  
Phone: 970-434-9079 Mobile: 970-200-1730 Email: dcr@realstonmech.com

FOOD BANK OF THE ROCKIES

698 LONG ACRE DRIVE  
GRAND JUNCTION, COLORADO

MECHANICAL ROOF  
PLAN WEST

NO:

ISSUED FOR:

DATE:

100% CONSTRUCTION DOCUMENTS  
BID PACKAGE #4, ABOVE GROUND

DATE:  
08/25/2021

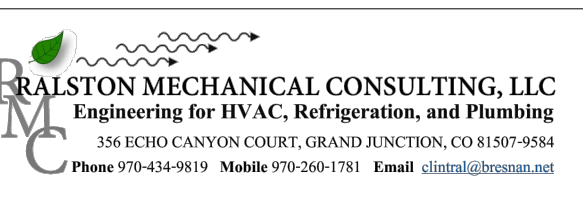
SHEET NO:  
2108

PROJECT NO:  
M141





ROUND DUCTS ARE INDICATED USING SINGLE LINE.



## M142



<p><b>GENERAL SYMBOLS</b></p> <p>AB-# INFO EQUIPMENT DESIGNATION (REFER TO SCHEDULES AND SPECIFICATIONS)</p> <p>AB-# INFO SECTION INDICATOR A = SECTION DESIGNATION M-1 = SHEET DESIGNATION</p> <p>1 KEYED NOTE DESIGNATION</p> <p>△ DRAWING REVISION DESIGNATION</p> <p>○ CONNECT TO EXISTING</p> <p><b>ABBREVIATIONS</b></p> <p>AFF ABOVE FINISHED FLOOR OF LOWEST PART OF EQUIPMENT OR CENTERLINE OF PIPE UNLESS NOTED OTHERWISE</p> <p>AFG ABOVE FINISHED GRADE</p> <p>BDD BACK DRAFT DAMPER</p> <p>BFG BELOW FINISHED GRADE</p> <p>CD CONDENSATE DRAIN</p> <p>CFM CUBIC FEET PER MINUTE</p> <p>COTG CLEANOUT TO GRADE</p> <p>CV CIRCUIT VENT</p> <p>CW COLD WATER</p> <p>DB DRY BULB TEMPERATURE</p> <p>EA EXHAUST AIR</p> <p>EAT ENTERING AIR TEMPERATURE</p> <p>EWIT ENTERING WATER TEMPERATURE</p> <p>FCD FLOOR CLEANOUT</p> <p>°F DEGREES FAHRENHEIT</p> <p>FF FINISHED FLOOR</p> <p>GC GENERAL CONTRACTOR</p> <p>HW HOT WATER - DOMESTIC</p> <p>HWC HOT WATER CIRCULATING - DOMESTIC</p> <p>HWR HOT WATER RETURN</p> <p>HWS HOT WATER SUPPLY</p> <p>LB POUNDS (WEIGHT)</p> <p>MC MECHANICAL CONTRACTOR</p> <p>NIC NOT IN CONTRACT</p> <p>NK NECK (DUCT CONNECTION)</p> <p>NTS NOT TO SCALE</p> <p>OBD OPPOSED BLADE DAMPER</p> <p>PC PLUMBING CONTRACTOR</p> <p>RA RETURN AIR</p> <p>RDL ROOF DRAIN LEADER</p> <p>RE REFER TO</p> <p>SA SUPPLY AIR</p> <p>SDL STORM DRAIN LEADER</p> <p>SS SANITARY SEWER</p> <p>SWR SNOWMELT WATER RETURN</p> <p>SWS SNOWMELT WATER SUPPLY</p> <p>TYP TYPICAL</p> <p>UNO UNLESS NOTED OTHERWISE</p> <p>VTR VENT THROUGH ROOF</p> <p>WCO WALL CLEANOUT</p> <p>W WASTE</p> <p>WR WET BULB TEMPERATURE</p>	<p><b>PIPING</b></p> <p>CWR CHILLED WATER RETURN</p> <p>CWS CHILLED WATER SUPPLY</p> <p>CW COLD WATER</p> <p>CA COMPRESSED AIR</p> <p>--- HOT WATER - DOMESTIC</p> <p>--- HOT WATER - DOMESTIC, TEMPERATURE SHOWN</p> <p>--- HOT WATER CIRCULATING - DOMESTIC</p> <p>HWR HEATING WATER RETURN</p> <p>HWS HEATING WATER SUPPLY</p> <p>G NATURAL GAS</p> <p>NO NITROUS OXIDE</p> <p>O OXYGEN</p> <p>ORDL OVERFLOW ROOF DRAIN PIPING</p> <p>RDL ROOF DRAIN PIPING</p> <p>RL REFRIGERATION LIQUID</p> <p>RS REFRIGERATION SUCTION</p> <p>SS SANITARY SEWER</p> <p>--- SANITARY VENT</p> <p>SWR SNOWMELT RETURN</p> <p>SWS SNOWMELT SUPPLY</p> <p>V VACUUM</p> <p>WASTE</p>	<p><b>PIPING ACCESSORIES</b></p> <p>GATE OR GLOBE VALVE</p> <p>BALL VALVE</p> <p>CHECK VALVE</p> <p>SOLENOID VALVE</p> <p>BUTTERFLY VALVE</p> <p>RELIEF VALVE</p> <p>BALANCING VALVE, CALIBRATED</p> <p>ANGLE VALVE, GATE OR GLOBE</p> <p>UNION</p> <p>CONTROL VALVE, 2-WAY</p> <p>CONTROL VALVE, 3-WAY</p> <p>P-T PORT</p> <p>STRAINER</p> <p>THERMOMETER IN PIPELINE</p> <p>PRESSURE REGULATING VALVE</p> <p>HOSE BIBB</p> <p>PRESSURE GAUGE</p> <p>HORIZONTAL CLEANOUT</p> <p>FLOOR CLEANOUT</p> <p>TWO-WAY CLEANOUT</p> <p>FLOOR DRAIN OR SHOWER DRAIN</p> <p>FLOOR SINK</p> <p>ROOF DRAIN</p>	<p><b>PIPING FITTINGS</b></p> <p>ELBOW</p> <p>ELBOW UP</p> <p>ELBOW DOWN</p> <p>TEE</p> <p>TEE UP</p> <p>TEE DOWN</p> <p><b>DUCTWORK</b></p> <p>22"x18" RETURN OR EXHAUST DUCT DOWN, DIMENSION ACROSS LISTED FIRST</p> <p>SUPPLY DUCT DOWN</p> <p>RETURN OR EXHAUST DUCT UP</p> <p>SUPPLY DUCT UP</p> <p>DUCT ELBOW, DIMENSION OF SIDE SHOWN = 22"</p> <p>DUCT, DIMENSION OF SIDE SHOWN = 22"</p>	<p><b>DUCT ACCESSORIES</b></p> <p>FLEXIBLE DUCT CONNECTION</p> <p>MANUAL VOLUME DAMPERS IN DUCTS</p> <p>FIRE DAMPER</p> <p>COMBINATION FIRE/SMOKE DAMPER</p> <p>MOTORIZED CONTROL DAMPER IN DUCT</p> <p><b>CONTROLS</b></p> <p>① THERMOSTAT / TEMPERATURE CONTROL</p> <p>② HUMIDISTAT OR HUMIDITY SENSOR</p> <p>③ DUCT THERMOSTAT OR TEMPERATURE SENSOR</p> <p>④ DUCT HUMIDISTAT OR HUMIDITY SENSOR</p> <p>⑤ TEMPERATURE SENSOR</p> <p>⑥ PRESSURE SENSOR</p> <p>⑦ CARBON DIOXIDE SENSOR</p>	<p><b>GRILLES, REGISTERS, AND DIFFUSERS</b></p> <p>RA-1 12"x18" SIDEWALL RETURN OR EXHAUST GRILLE RA-1 (OR EA-1), 12"Wx8"H</p> <p>SA-1 12"x8" 225 CFM SIDEWALL SUPPLY GRILLE OR REGISTER SA-1, 12"Wx8"H, 225 CFM</p> <p>RA-1 12"x18" CEILING RETURN GRILLE OR REGISTER RA-1, 12"x8"</p> <p>SA-1 24"x24" 225 CFM CEILING SUPPLY DIFFUSER, GRILLE, OR REGISTER SA-1, 24"x24", 225 CFM</p> <p>EA-1 12"x8" 200 CFM CEILING EXHAUST GRILLE OR REGISTER EA-1, 12"x8", 200 CFM</p>
--	--	--	---	---	---

CA

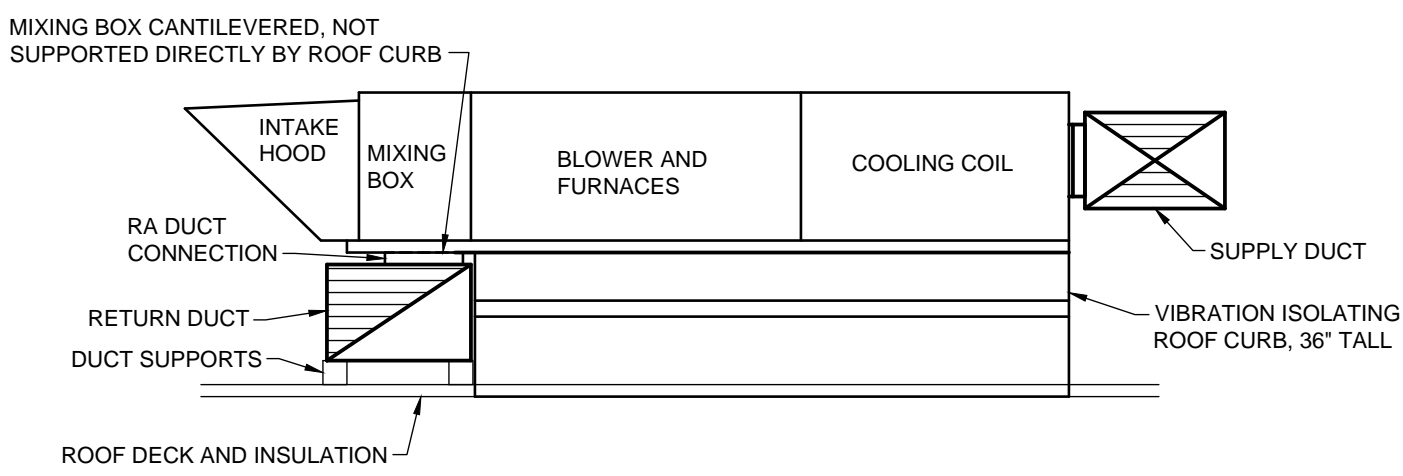
chamberlin

437 Main Street  
Grand Junction, CO 81501  
970.242.6804  
chamberlinarchitects.com

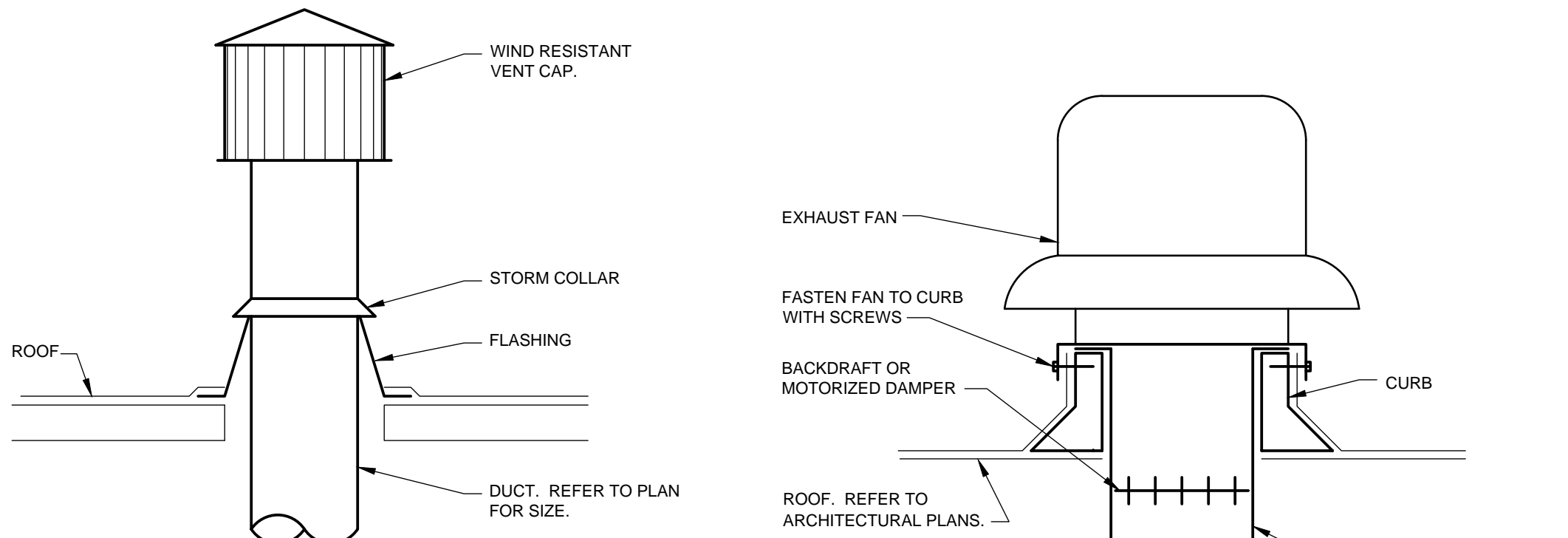


RA

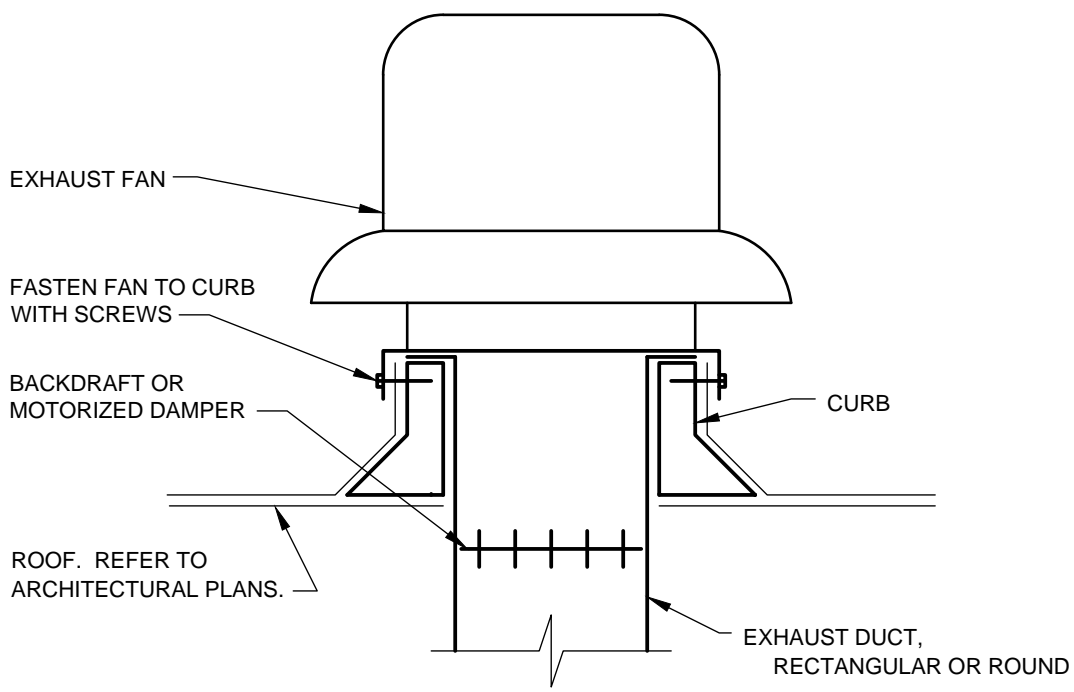
RAISTON MECHANICAL CONSULTING, LLC  
Engineering for HVAC, Refrigeration, and Plumbing  
350 KCHD CANYON COURT, GRAND JUNCTION, CO 81507-0584  
Phone: 970.624.9177 Mobile: 970.289.1707 Email: d@raistonmech.com



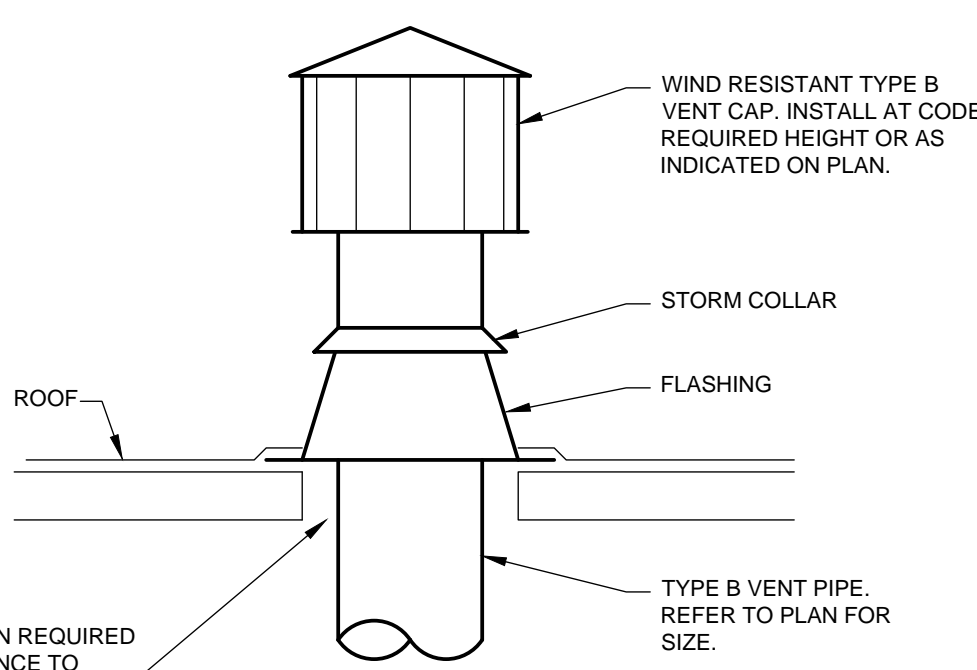
MA-2 INSTALLATION DETAIL  
SCALE: NONE



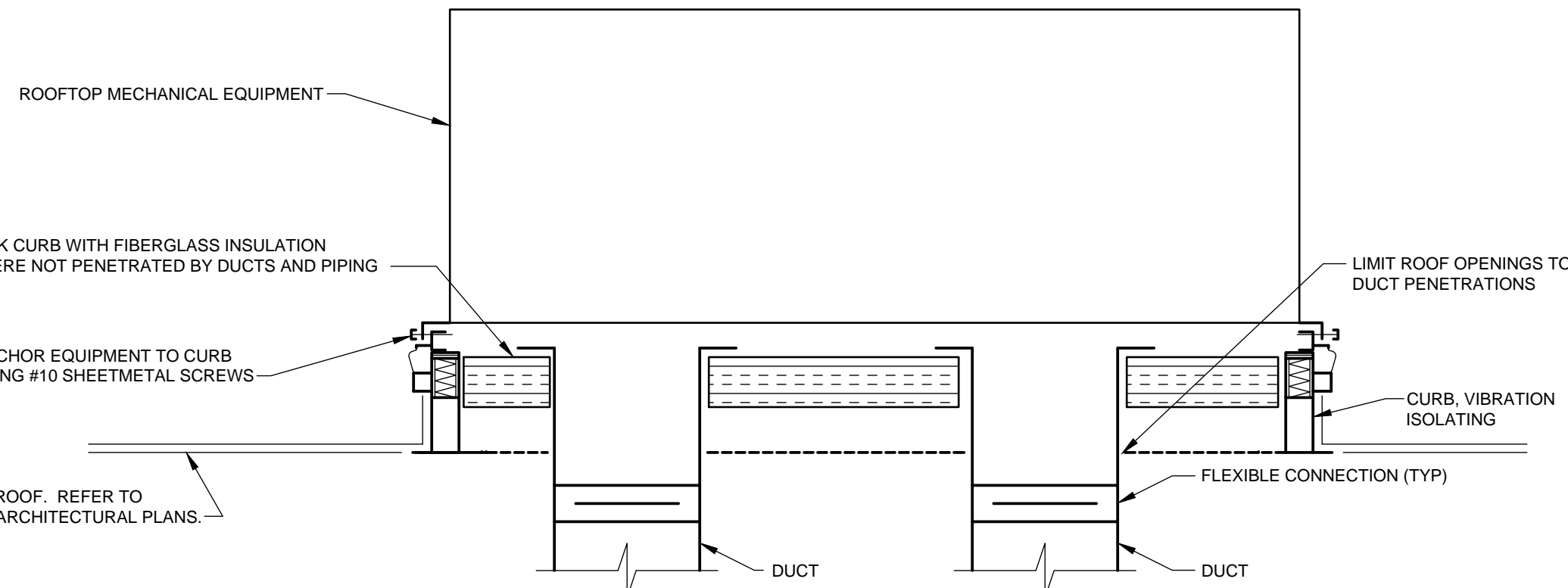
EXHAUST DUCT THROUGH ROOF DETAIL  
NO SCALE



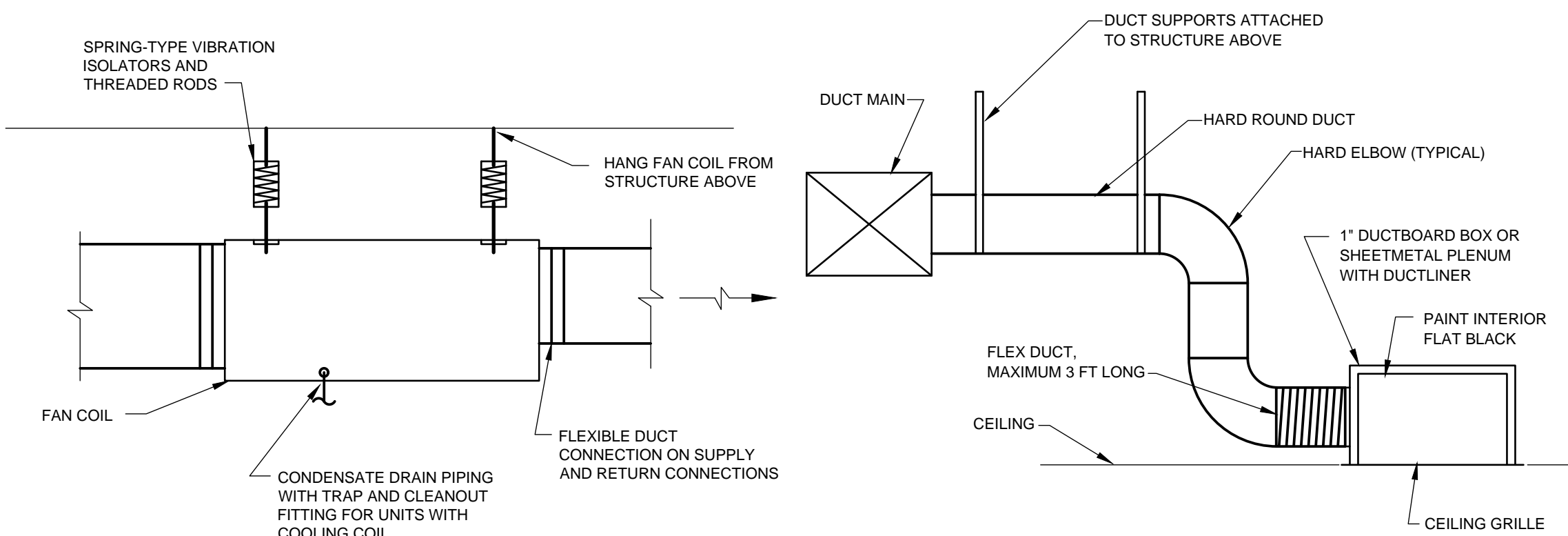
EXHAUST ROOF TERMINAL DETAIL  
NO SCALE



COMBUSTION VENT THROUGH ROOF DETAIL  
NO SCALE

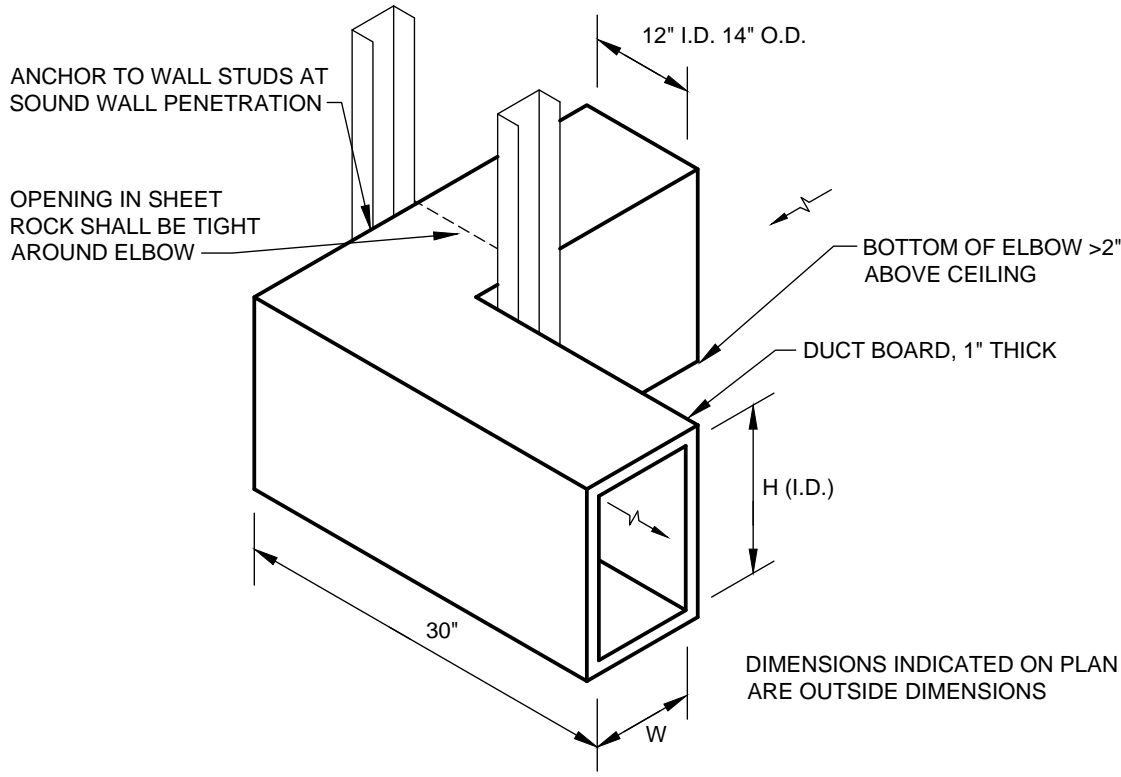


ROOFTOP MECHANICAL EQUIPMENT INSTALLATION DETAIL  
NO SCALE

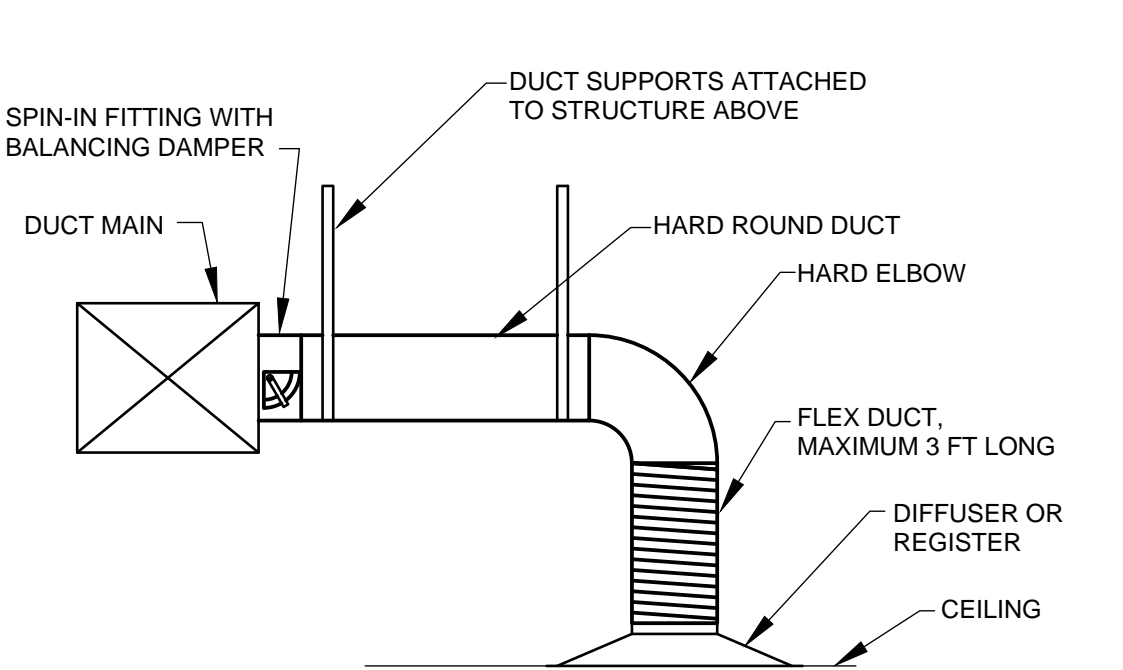


FAN COIL MOUNTING DETAIL  
NO SCALE

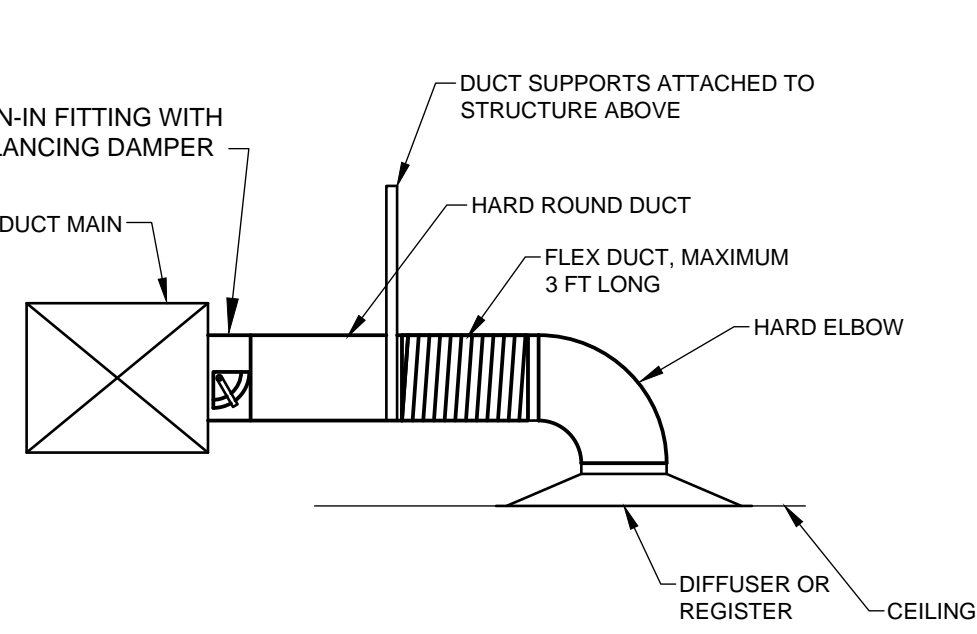
BRANCH RETURN DUCT AND CEILING GRILLE INSTALLATION DETAIL  
NO SCALE



SOUND ATTENUATION ELBOW DETAIL  
NO SCALE



BRANCH SUPPLY DUCT INSTALLATION DETAIL  
NO SCALE



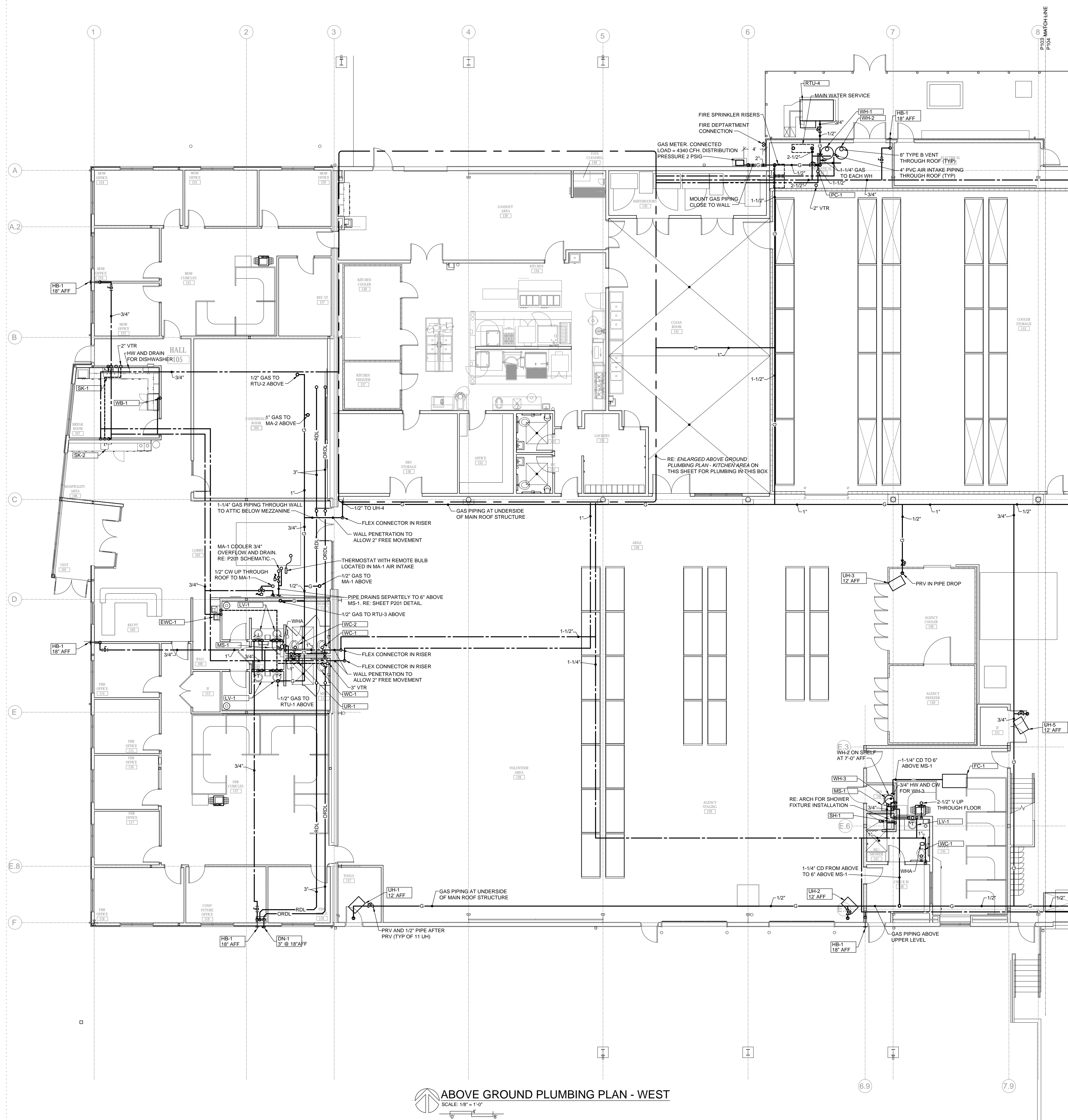
BRANCH SUPPLY DUCT INSTALLATION DETAIL  
NO SCALE

FOOD BANK OF THE ROCKIES

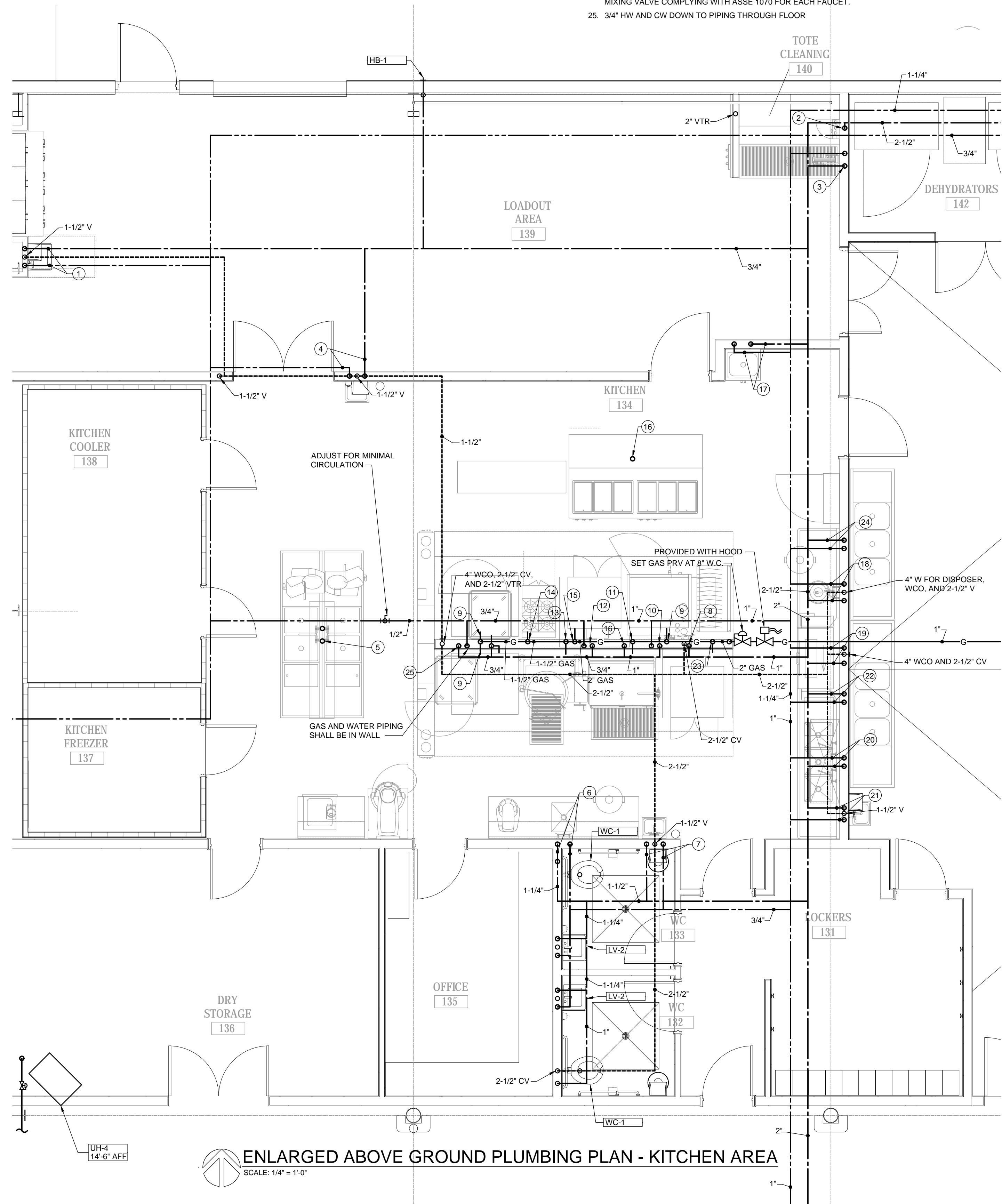
698 LONG ACRE DRIVE  
GRAND JUNCTION, COLORADO

MECHANICAL  
DETAILS & LEGEND

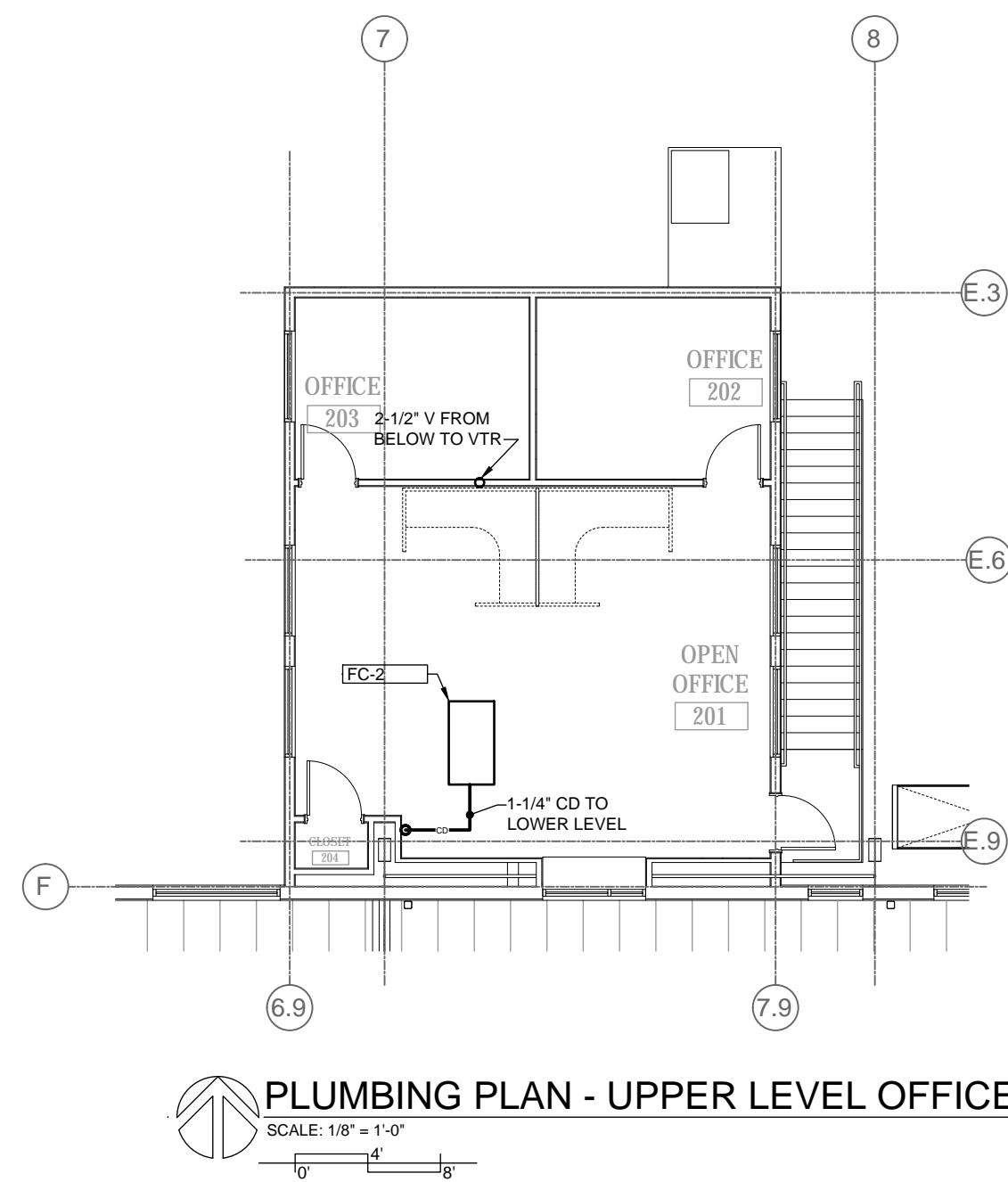




**ABOVE GROUND PLUMBING PLAN - WEST**  
SCALE: 1/8" = 1'-0"



**ENLARGED ABOVE GROUND PLUMBING PLAN - KITCHEN AREA**  
SCALE: 1/4" = 1'-0"



**PLUMBING PLAN - UPPER LEVEL OFFICES**  
SCALE: 1/8" = 1'-0"

**GENERAL NOTES**

THE PLUMBING CONTENT OF THE PLUMBING DRAWINGS IS DIAGRAMMATIC AND NOT NECESSARILY TO SCALE.

THE CONTRACTOR SHALL MAKE MINOR ADJUSTMENTS TO LOCATIONS OF DUCTWORK, EQUIPMENT, PIPING, AND SUPPORTS IN ORDER TO COORDINATE WITH BUILDING CONSTRUCTION AND WORK OF OTHER TRADES.

REFER TO SCHEDULES AND SPECIFICATIONS FOR EQUIPMENT AND MATERIALS OF CONSTRUCTION.

INSTALL WASTE PIPING CLEANOUTS WHERE INDICATED AND AS REQUIRED BY 2018 INTERNATIONAL PLUMBING CODE, GAINING ACCESS TO SOIL PIPING FOR CLEANOUT BY REMOVAL OF A TOILET IS NOT A CODE-COMPLIANT CLEANOUT AND WILL NOT BE ACCEPTED.

REFER TO KITCHEN CONSULTANT'S DRAWINGS FOR KITCHEN FIXTURES AND REQUIRED WATER AND WASTE CONNECTIONS AND ASSOCIATED DIMENSIONS. PLUMBING CONTRACTOR SHALL PROVIDE PIPING, STOP VALVES, FLEXIBLE WATER SUPPLIES, AND INCLUDING INDIRECT WASTE PIPING REQUIRED FOR CONNECTION OF FIXTURES.

KITCHEN FIXTURE INDIRECT WASTE PIPING SHALL BE SUPPORTED ON KITCHEN EQUIPMENT AT 6" AFF TO ALLOW CLEANING OF FLOOR. IF HEIGHT OF DRAIN CONNECTION ON EQUIPMENT REQUIRES DRAIN TO BE LOWER THAN 6", INSTALL DRAIN PIPING AS HIGH AS POSSIBLE.

ABOVE GRADE PIPING IN WAREHOUSE SHALL BE INSTALLED AT UNDERSIDE OF MAIN STRUCTURE TO AVOID CONFLICT WITH PALLET PLACEMENT BY FORKLIFT.

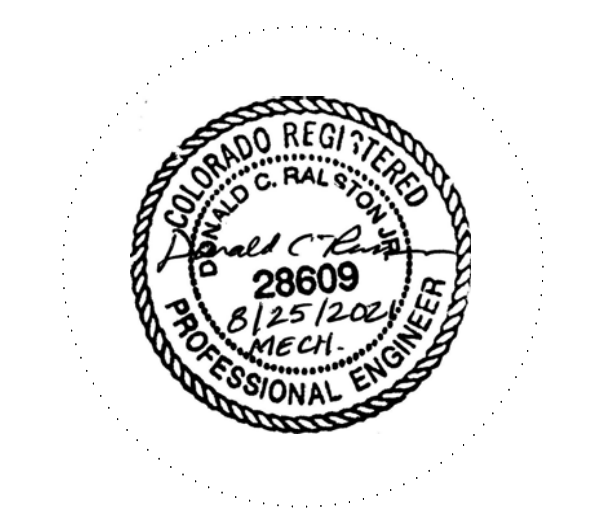
REFER TO SHEET P101 FOR UNDERGROUND PLUMBING SERVING FIXTURES SHOWN ON SHEET P103.

REFER TO SHEET P102 FOR UNDERGROUND PLUMBING SERVING FIXTURES SHOWN ON SHEET P104.

- KEYED NOTES**
- 1/2" HW AND CW TO HAND SINK. PROVIDE THERMOSTATIC MIXING VALVE COMPLYING WITH ASSE 1070.
  - 1/2" CW TO SANITIZER STATION
  - 1/2" HW AND CW TO HOSE REEL SYSTEM
  - 1/2" HW AND CW TO HAND SINK. PROVIDE THERMOSTATIC MIXING VALVE COMPLYING WITH ASSE 1070.
  - 3/4" HW AND CW UP FROM FLOOR TO TWO FAUCETS (1/2" TO EACH). PROVIDE THERMOSTATIC MIXING VALVE COMPLYING WITH ASSE 1070 FOR EACH FAUCET.
  - 1/2" HW AND CW TO SINK. PROVIDE THERMOSTATIC MIXING VALVE COMPLYING WITH ASSE 1070.
  - 1/2" HW AND CW TO HAND SINK. PROVIDE THERMOSTATIC MIXING VALVE COMPLYING WITH ASSE 1070.
  - 1/2" CW TO WATER FILTER ASSEMBLY AND FROM FILTER TO DOUBLE COMBI OVENS
  - 3/4" GAS TO DOUBLE COMBI OVENS
  - 1/2" HW AND CW TO TILT SKILLET FAUCET
  - 3/4" GAS TO TILT SKILLET
  - 1/2" HW AND CW TO KETTLE FAUCET
  - 3/4" GAS PIPING FOR KETTLE
  - 1" GAS PIPING AND BALL VALVE FOR RANGE
  - 1" GAS PIPING FOR DOUBLE CONVECTION OVEN
  - 1/4" CW TO PIPING BELOW FLOOR TO HEAT WELLS
  - 1/2" HW AND CW TO MOP SINK FAUCET.
  - 3/4" HW AND CW TO PRERINSE FAUCET AND 1/2" CW TO DISPOSER. PROVIDE THERMOSTATIC MIXING VALVE COMPLYING WITH ASSE 1070.
  - 3/4" HW AND CW TO WAREWASHER
  - 3/4" HW AND CW TO 3-COMPARTMENT SINK TWO FAUCETS, 1/2" TO EACH. PROVIDE THERMOSTATIC MIXING VALVE COMPLYING WITH ASSE 1070 FOR EACH FAUCET.
  - 1/2" HW AND CW TO HAND SINK. PROVIDE THERMOSTATIC MIXING VALVE COMPLYING WITH ASSE 1070.
  - 3/4" HW AND CW TO 3-COMPARTMENT SINK TWO FAUCETS, 1/2" TO EACH. PROVIDE THERMOSTATIC MIXING VALVE COMPLYING WITH ASSE 1070 FOR EACH FAUCET.
  - 1" GAS PIPING, BALL VALVE, AND 1"x3/4" REDUCER FOR DOUBLE CONVECTION OVEN
  - 3/4" HW AND CW TO 3-COMPARTMENT SINK TWO FAUCETS, 1/2" TO EACH. PROVIDE THERMOSTATIC MIXING VALVE COMPLYING WITH ASSE 1070 FOR EACH FAUCET.
  - 3/4" HW AND CW DOWN TO PIPING THROUGH FLOOR

**CA**  
**chamberlin**

437 Main Street  
Grand Junction, CO 81501  
970.242.6804  
chamberlinarchitects.com



**RAISTON MECHANICAL CONSULTING, LLC**  
Engineering for HVAC, Refrigeration, and Plumbing  
300 KENDRICK COURT, GRAND JUNCTION, CO 81507-0584  
Phone: 970-244-9107 Mobile: 970-269-1707 Email: dchamberlin@raistonmech.com

## FOOD BANK OF THE ROCKIES

698 LONG ACRE DRIVE  
GRAND JUNCTION, COLORADO

**MAIN LEVEL ABOVE GROUND PLUMBING PLANS - WEST & SECOND FLOOR OFFICES**

NO. ISSUED FOR: DATE:

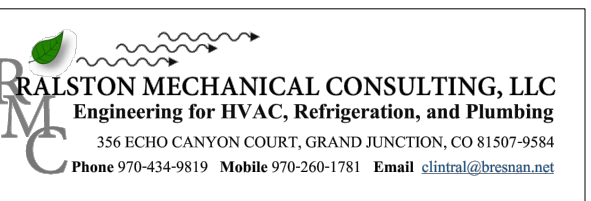
100% CONSTRUCTION DOCUMENTS  
BID PACKAGE #4, ABOVE GROUND

DATE: 08/25/2021 SHEET NO: **P103**

PROJECT NO: 2108

2025 CHAMBERLIN ARCHITECTS





GENERAL NOTES

THE PLUMBING CONTENT OF THE PLUMBING DRAWINGS IS DIAGRAMMATIC AND NOT NECESSARILY TO SCALE.

THE CONTRACTOR SHALL MAKE MINOR ADJUSTMENTS TO LOCATIONS OF DUCTWORK, EQUIPMENT, PIPING, AND SUPPORTS IN ORDER TO COORDINATE WITH BUILDING CONSTRUCTION AND WORK OF OTHER TRADES.

REFER TO SCHEDULES AND SPECIFICATIONS FOR EQUIPMENT AND MATERIALS OF CONSTRUCTION.

INSTALL WASTE PIPING CLEANOUTS WHERE INDICATED AND AS REQUIRED BY 2018 INTERNATIONAL PLUMBING CODE, GAINING ACCESS TO SOIL PIPING FOR CLEANOUT BY REMOVAL OF A TOILET IS NOT A CODE-COMPLIANT CLEANOUT AND WILL NOT BE ACCEPTED.

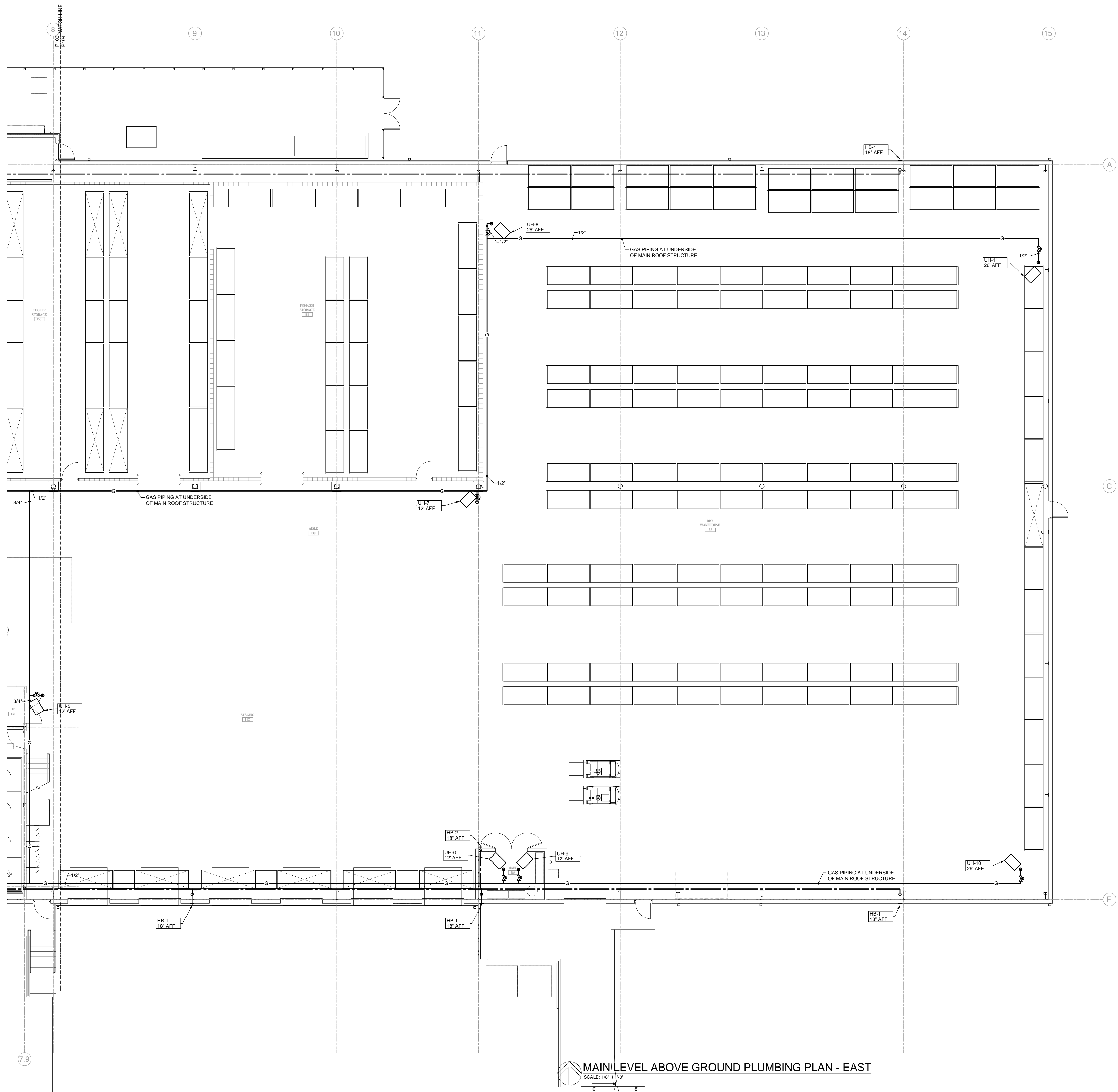
REFER TO KITCHEN CONSULTANT'S DRAWINGS FOR KITCHEN FIXTURES AND REQUIRED WATER AND WASTE CONNECTIONS AND ASSOCIATED DIMENSIONS. PLUMBING CONTRACTOR SHALL PROVIDE PIPING, STOP VALVES, FLEXIBLE WATER SUPPLIES, AND INCLUDING INDIRECT WASTE PIPING REQUIRED FOR CONNECTION OF FIXTURES.

KITCHEN FIXTURE INDIRECT WASTE PIPING SHALL BE SUPPORTED ON KITCHEN EQUIPMENT AT 6" AFF TO ALLOW CLEANING OF FLOOR. IF HEIGHT OF DRAIN CONNECTION ON EQUIPMENT REQUIRES DRAIN TO BE LOWER THAN 6", INSTALL DRAIN PIPING AS HIGH AS POSSIBLE.

ABOVE GRADE PIPING IN WAREHOUSE SHALL BE INSTALLED AT UNDERSIDE OF MAIN STRUCTURE TO AVOID CONFLICT WITH PALLET PLACEMENT BY FORKLIFT.

REFER TO SHEET P101 FOR UNDERGROUND PLUMBING SERVING FIXTURES SHOWN ON SHEET P103.

REFER TO SHEET P102 FOR UNDERGROUND PLUMBING SERVING FIXTURES SHOWN ON SHEET P104.

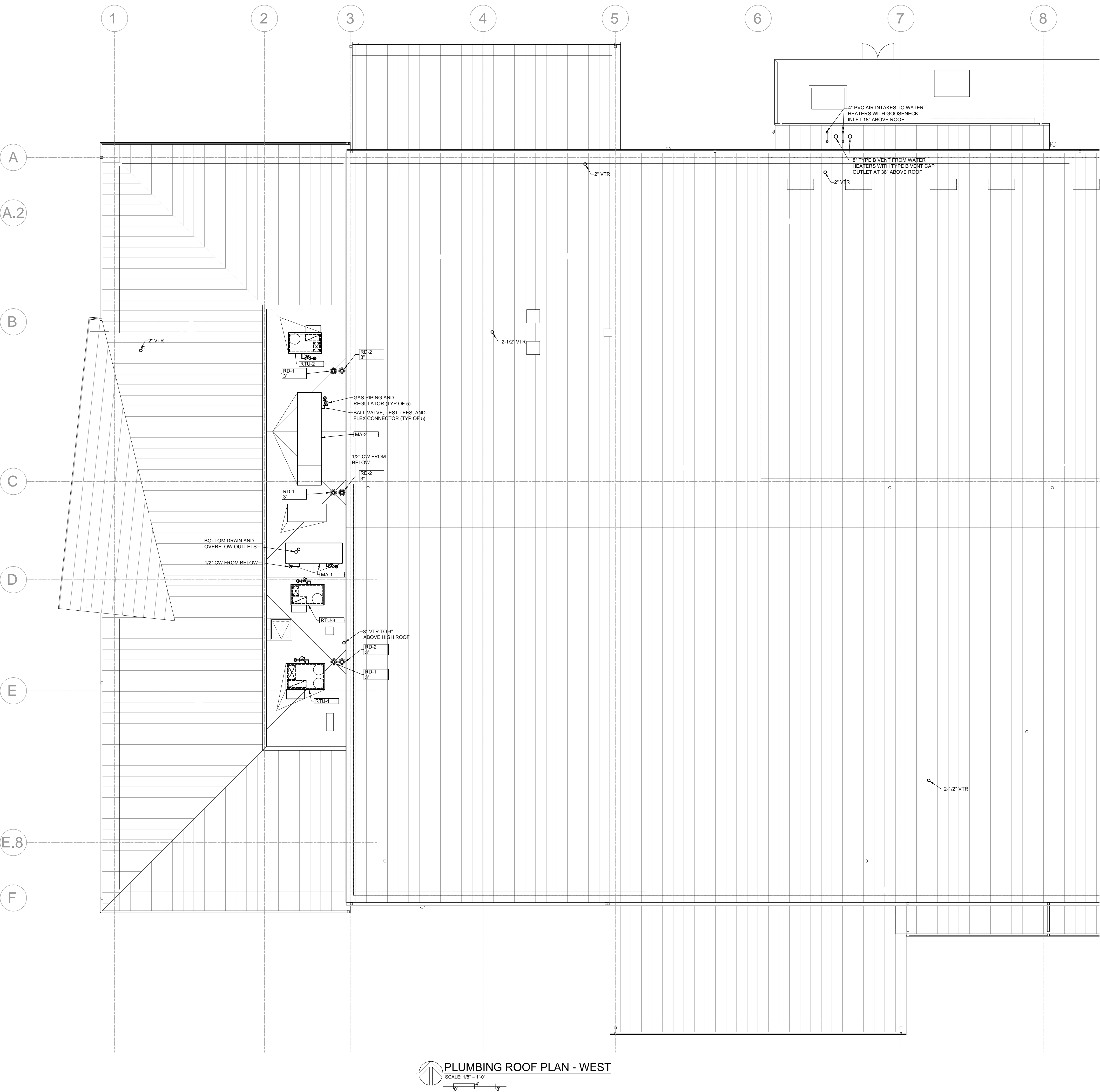


FOOD BANK OF THE ROCKIES

698 LONG ACRE DRIVE  
GRAND JUNCTION, COLORADO

MAIN LEVEL ABOVE  
GROUND PLUMBING  
PLAN - EAST





FOOD BANK OF THE ROCKIES

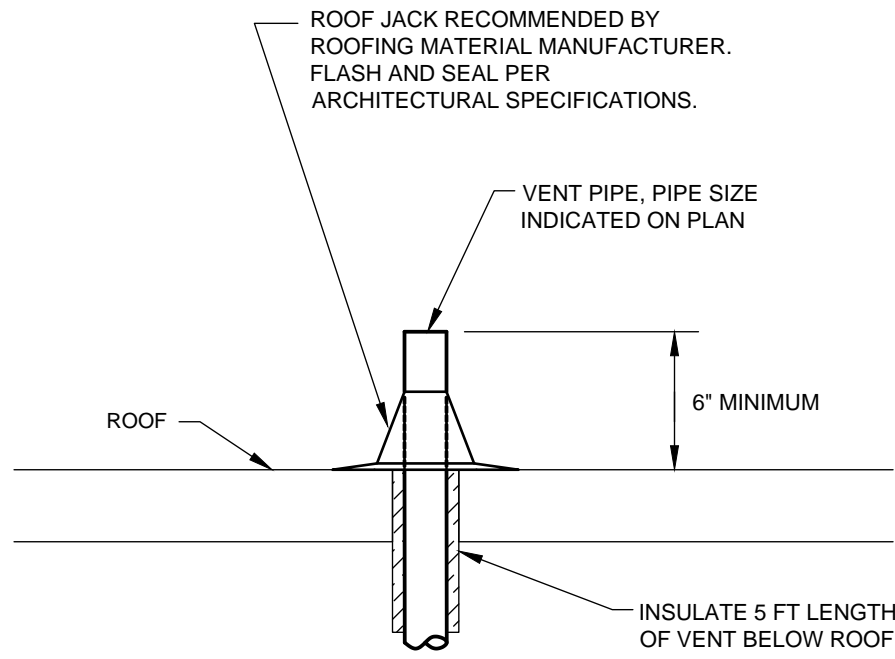
698 LONG ACRE DRIVE  
GRAND JUNCTION, COLORADO

ROOF PLUMBING  
PLAN - WEST

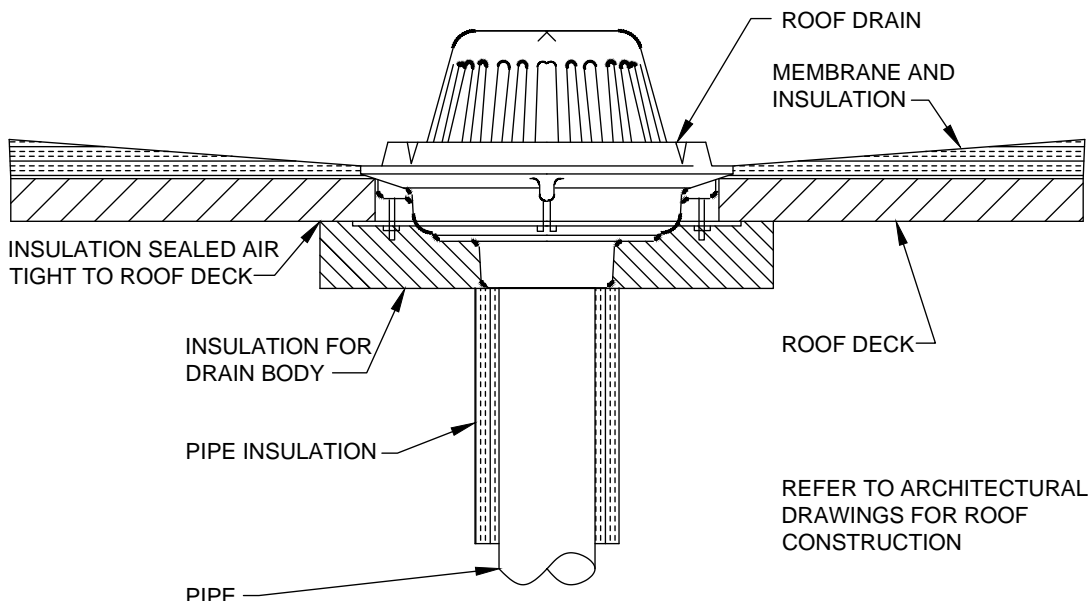


MECHANICAL & PLUMBING LEGEND

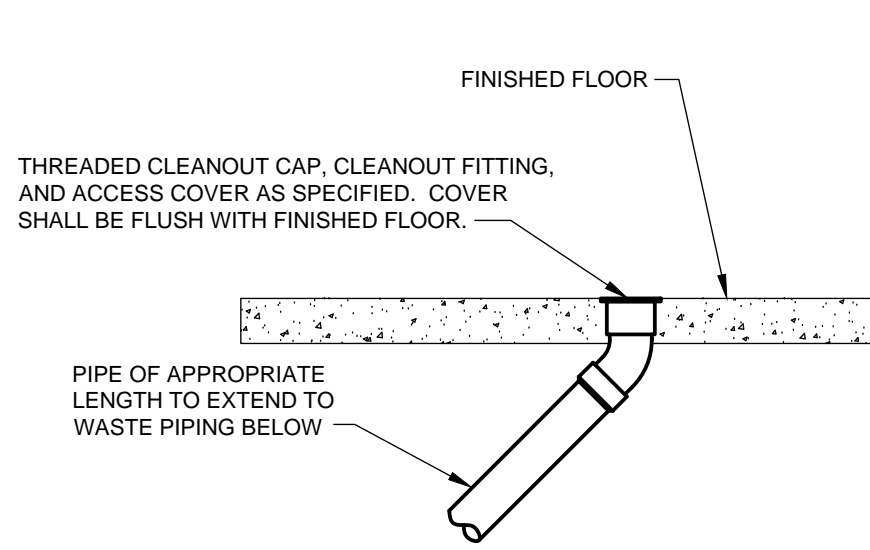
<p><b>GENERAL SYMBOLS</b></p> <p>AB-# INFO EQUIPMENT DESIGNATION (REFER TO SCHEDULES AND SPECIFICATIONS)</p> <p>M-1 SECTION INDICATOR A = SECTION DESIGNATION M-1 = SHEET DESIGNATION</p> <p>1 KEYED NOTE DESIGNATION</p> <p>DRAWING REVISION DESIGNATION</p> <p>CONNECT TO EXISTING</p> <p><b>ABBREVIATIONS</b></p> <p>AFF ABOVE FINISHED FLOOR AFG ABOVE FINISHED GRADE BDI BACK DRAFT DAMPER BFG BELOW FINISHED GRADE CD CONDENSATE DRAIN CFM CUBIC FEET PER MINUTE COTV CLEANOUT TO GRADE CV CIRCUIT VENT CW COLD WATER DB DRY BULB TEMPERATURE EA EXHAUST AIR EAT ENTERING AIR TEMPERATURE EWT ENTERING WATER TEMPERATURE FCD FLOOR CLEANOUT °F DEGREES FAHRENHEIT FF FINISHED FLOOR GC GENERAL CONTRACTOR HW HOT WATER - DOMESTIC HWC HOT WATER CIRCULATING - DOMESTIC HWR HOT WATER RETURN HWS HOT WATER SUPPLY LB POUNDS (WEIGHT) MC MECHANICAL CONTRACTOR NIC NOT IN CONTRACT NK NECK (DUCT CONNECTION) NTS NOT TO SCALE OBD OPPOSED BLADE DAMPER PC PLUMBING CONTRACTOR RA RETURN AIR RDL ROOF DRAIN LEADER RE REFER TO SA SUPPLY AIR SOL STORM DRAIN LEADER SS SANITARY SEWER SWR SNOWMELT WATER RETURN SWS SNOWMELT WATER SUPPLY V VENT VTR VENT THROUGH ROOF WCO WALL CLEANOUT W WASTE WB WET BULB TEMPERATURE</p>	<p><b>PIPING</b></p> <p>CWR CHILLED WATER RETURN CWS CHILLED WATER SUPPLY CW COLD WATER CA COMPRESSED AIR HOT WATER - DOMESTIC HOT WATER - DOMESTIC, TEMPERATURE SHOWN HOT WATER CIRCULATING - DOMESTIC HWR HEATING WATER RETURN HWS HEATING WATER SUPPLY G NATURAL GAS NO NITROUS OXIDE O OXYGEN ORDL OVERFLOW ROOF DRAIN PIPING RDL ROOF DRAIN PIPING RL REFRIGERATION LIQUID RS REFRIGERATION SUCTIION SS SANITARY SEWER SANITARY VENT SWR SNOWMELT RETURN SWS SNOWMELT SUPPLY V VACUUM WASTE</p>	<p><b>PIPING ACCESSORIES</b></p> <p>GATE OR GLOBE VALVE BALL VALVE CHECK VALVE SOLENOID VALVE BUTTERFLY VALVE RELIEF VALVE BALANCING VALVE, CALIBRATED ANGLE VALVE, GATE OR GLOBE UNION CONTROL VALVE, 2-WAY CONTROL VALVE, 3-WAY P-T PORT STRAINER THERMOMETER IN PIPELINE PRESSURE REGULATING VALVE HOSE BIBB PRESSURE GAUGE HORIZONTAL CLEANOUT FLOOR CLEANOUT TWO-WAY CLEANOUT FLOOR DRAIN OR SHOWER DRAIN FLOOR SINK ROOF DRAIN</p>	<p><b>PIPING FITTINGS</b></p> <p>ELBOW ELBOW UP ELBOW DOWN TEE TEE UP TEE DOWN</p> <p><b>DUCTWORK</b></p> <p>22"x18" RETURN OR EXHAUST DUCT DOWN, DIMENSION ACROSS LISTED FIRST SUPPLY DUCT DOWN RETURN OR EXHAUST DUCT UP SUPPLY DUCT UP DUCT ELBOW, DIMENSION OF SIDE SHOWN = 22" DUCT, DIMENSION OF SIDE SHOWN = 22"</p>	<p><b>DUCT ACCESSORIES</b></p> <p>FLEXIBLE DUCT CONNECTION MANUAL VOLUME DAMPERS IN DUCTS FIRE DAMPER COMBINATION FIRE/SMOKE DAMPER MOTORIZED CONTROL DAMPER IN DUCT</p> <p><b>CONTROLS</b></p> <p>THERMOSTAT / TEMPERATURE CONTROL HUMIDISTAT OR HUMIDITY SENSOR DUCT THERMOSTAT OR TEMPERATURE SENSOR DUCT HUMIDISTAT OR HUMIDITY SENSOR TEMPERATURE SENSOR PRESSURE SENSOR CARBON DIOXIDE SENSOR</p>	<p><b>GRILLES, REGISTERS, AND DIFFUSERS</b></p> <p>RA-1 12"x18" SIDEWALL RETURN OR EXHAUST GRILLE RA-1 (OR EA-1), 12"Wx8"H SA-1 12"x8" 225 CFM SIDEWALL SUPPLY GRILLE OR REGISTER SA-1, 12"Wx8"H, 225 CFM RA-1 12"x18" CEILING RETURN GRILLE OR REGISTER RA-1, 12"x8" SA-1 24"x24" 225 CFM CEILING SUPPLY DIFFUSER, GRILLE, OR REGISTER SA-1, 24"x24", 225 CFM EA-1 12"x8" 200 CFM CEILING EXHAUST GRILLE OR REGISTER EA-1, 12"x8", 200 CFM</p>
---	--	--	---	---	---



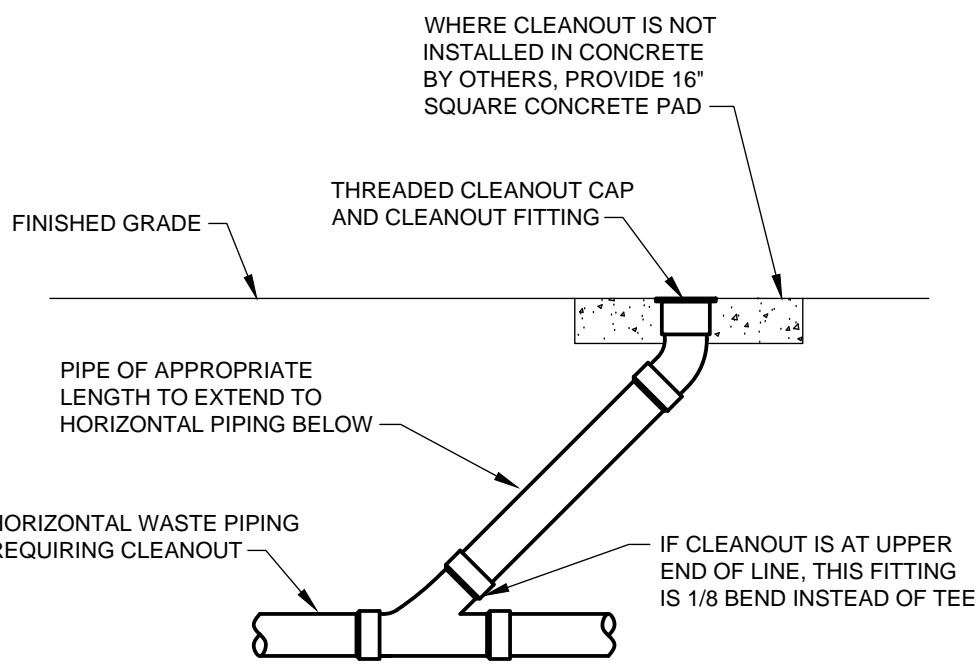
VENT THROUGH ROOF DETAIL  
NO SCALE



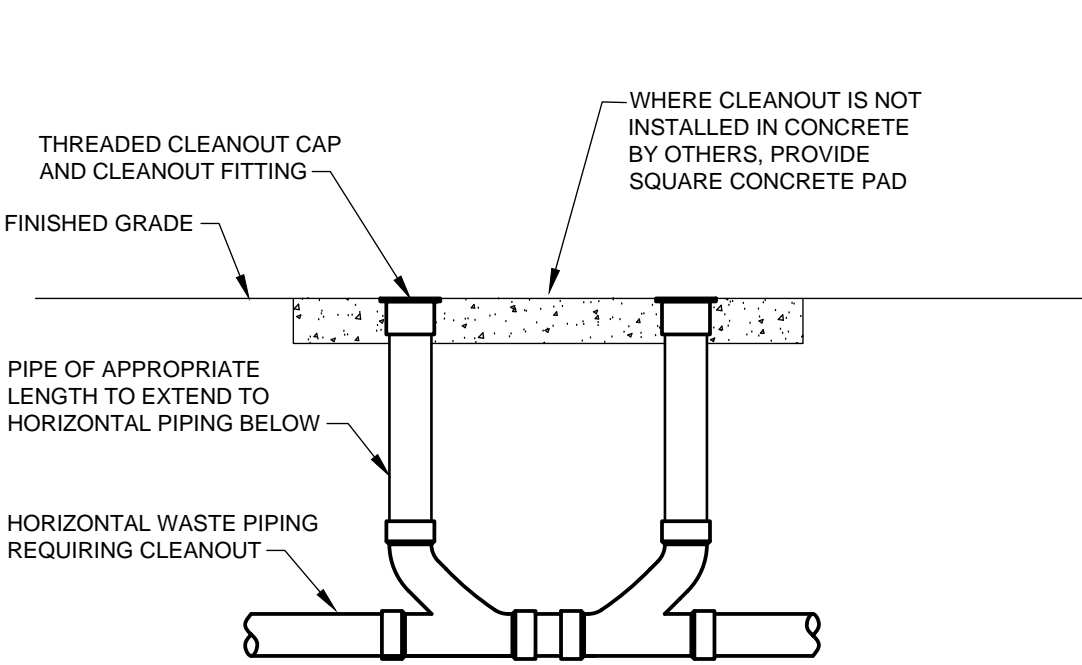
ROOF DRAIN DETAIL  
NO SCALE



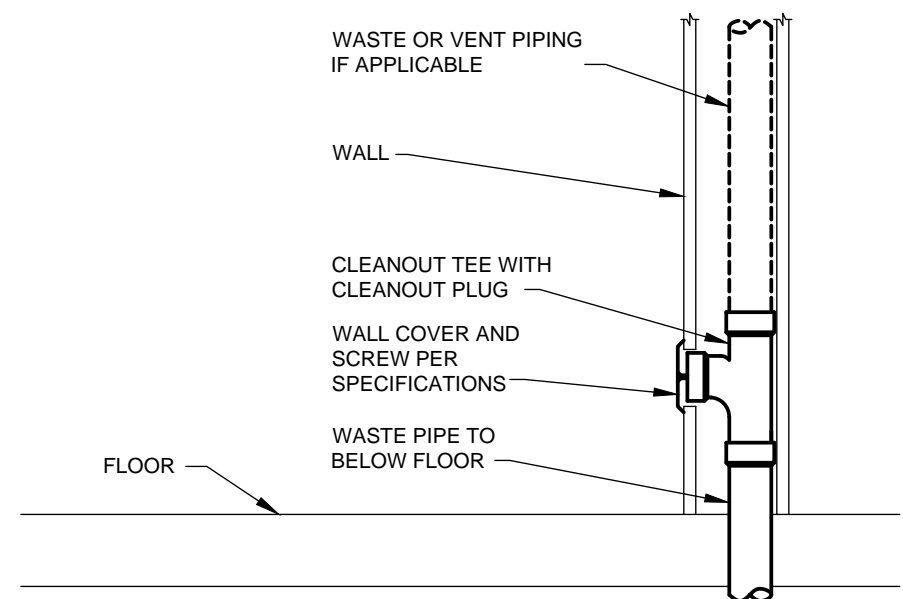
FLOOR CLEANOUT (F.C.O.) DETAIL  
NO SCALE



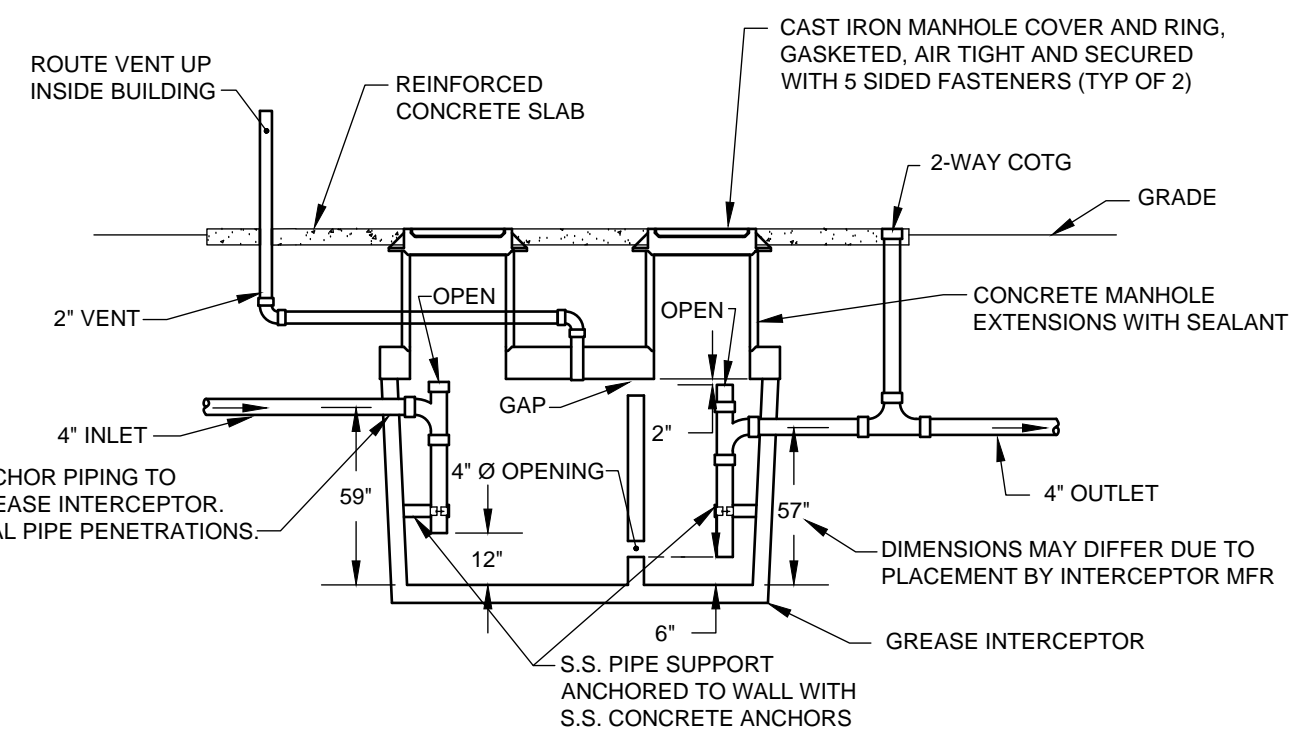
CLEANOUT TO GRADE (C.O.T.G.) DETAIL  
NO SCALE



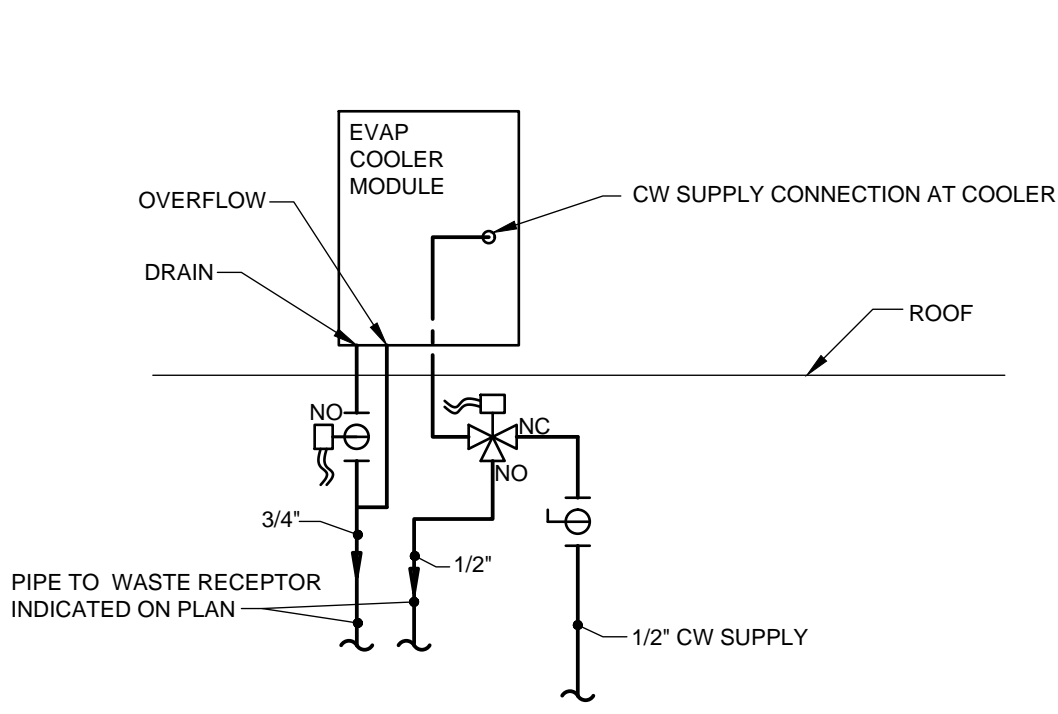
TWO-WAY CLEANOUT TO GRADE DETAIL  
NO SCALE



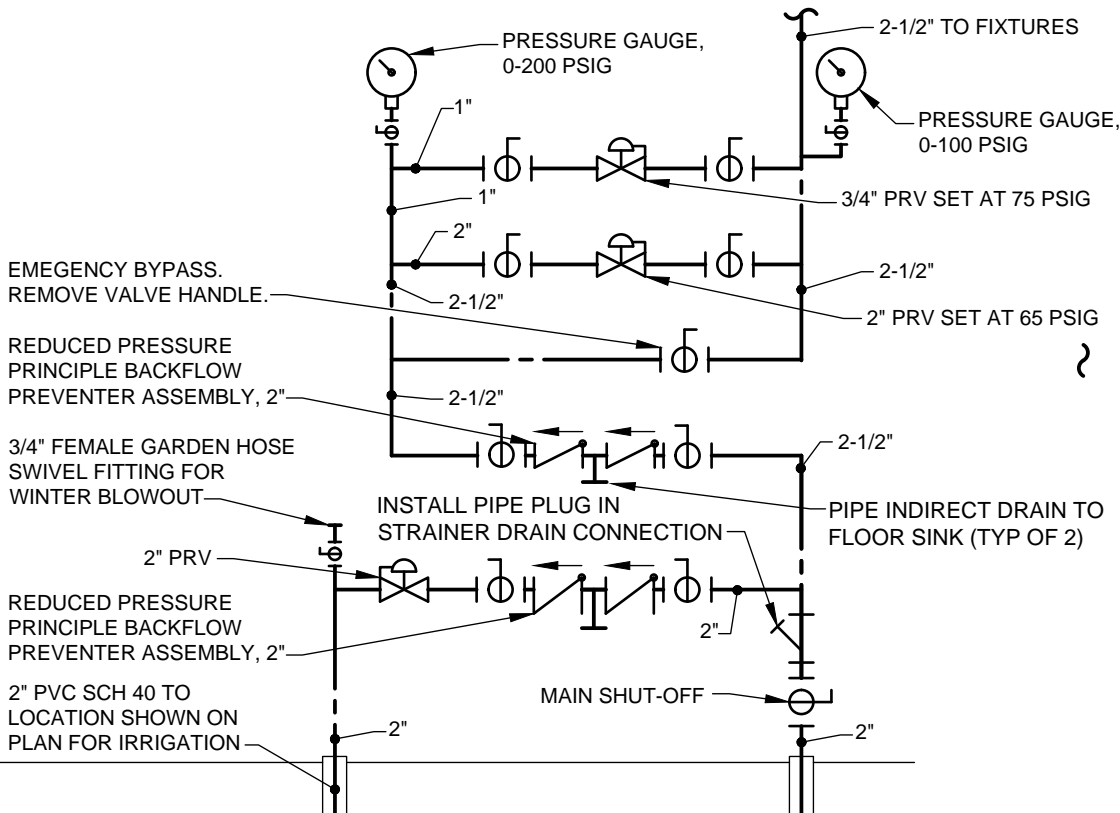
WALL CLEANOUT (W.C.O.) DETAIL  
NO SCALE



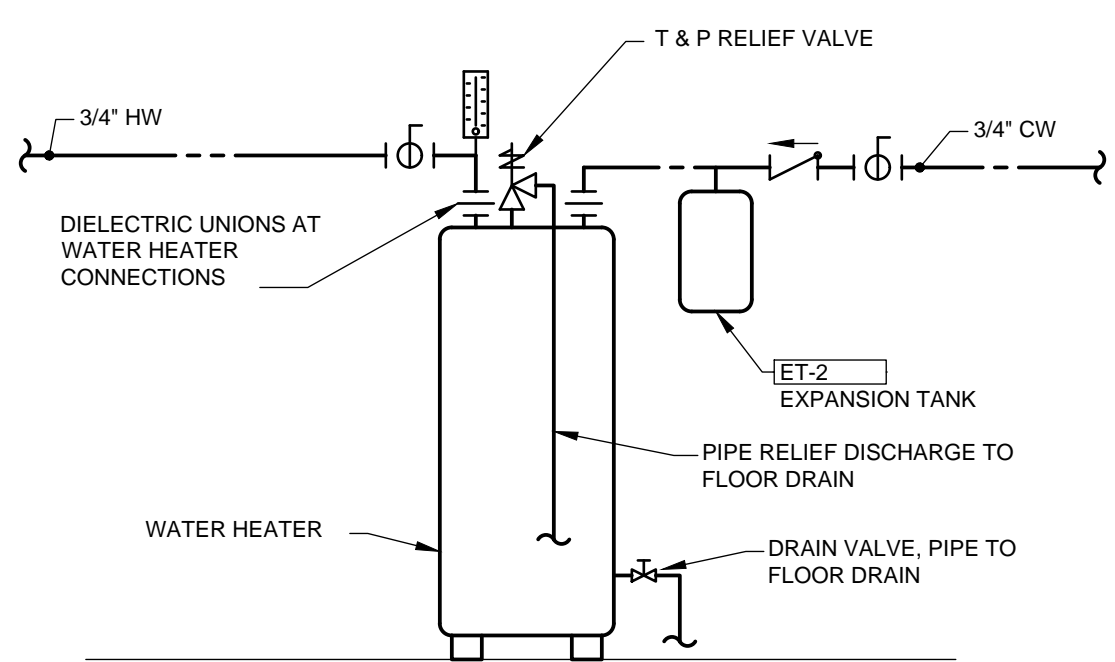
GREASE INTERCEPTOR DETAIL  
NOT TO SCALE



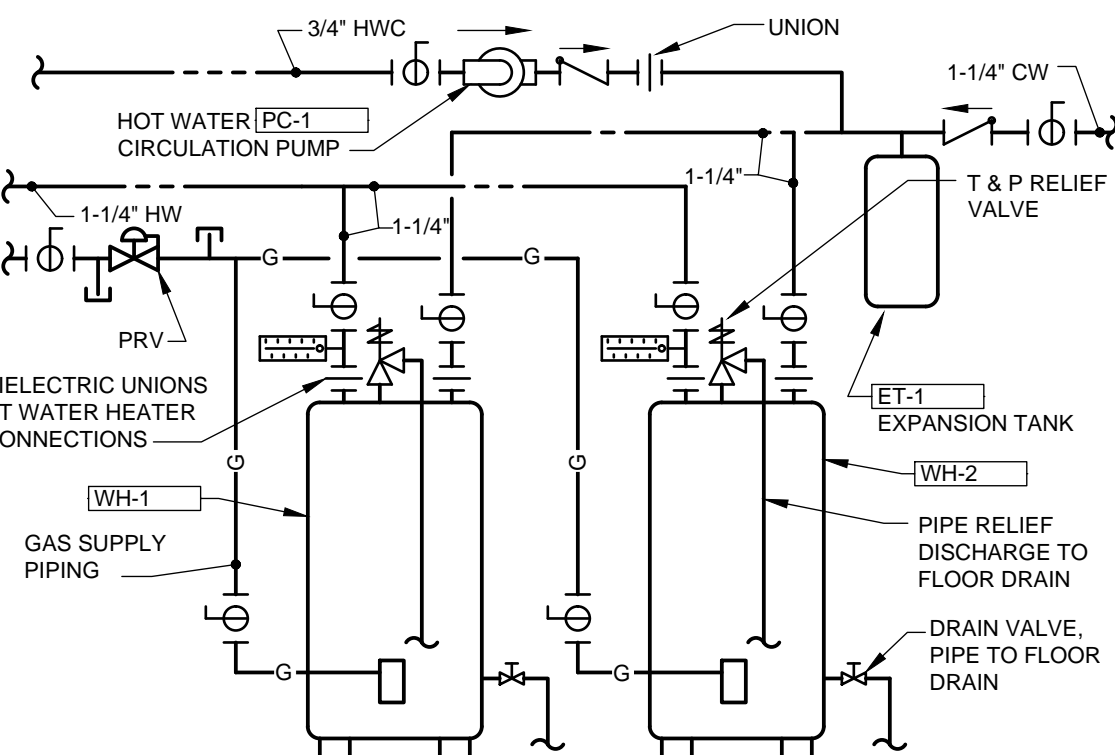
EVAPORATIVE COOLER PIPING SCHEMATIC  
NO SCALE



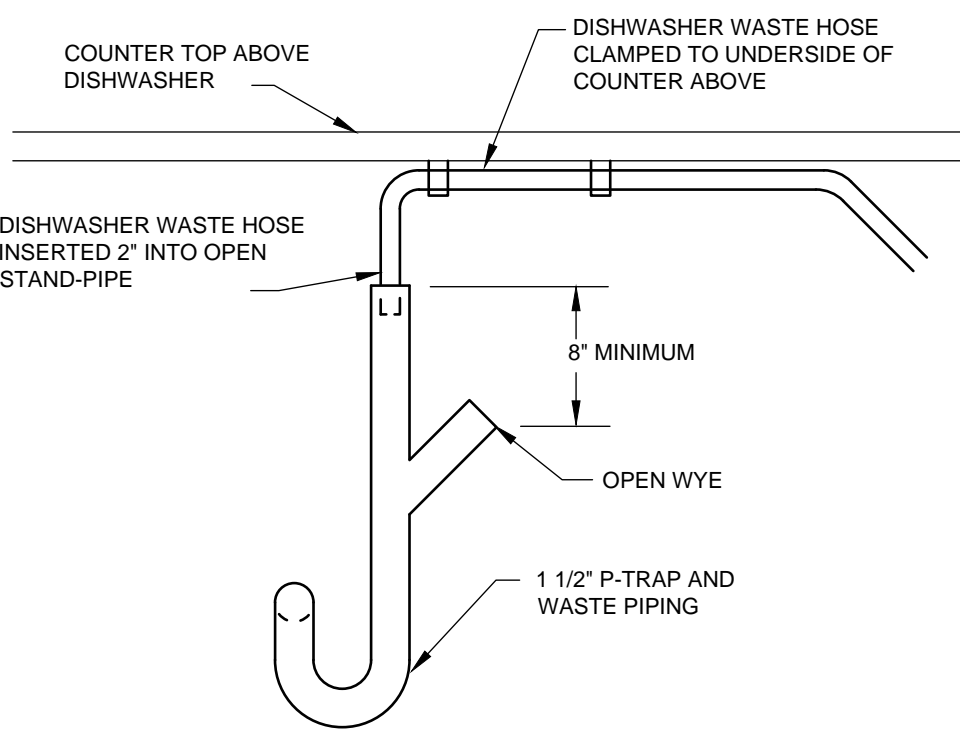
WATER SERVICE PIPING DETAIL  
NO SCALE



ELECTRIC WATER HEATER PIPING DETAIL  
NO SCALE



DUAL GAS WATER HEATER PIPING DETAIL  
NO SCALE



DISHWASHER WASTE CONNECTION DETAIL  
NO SCALE

PLUMBING FIXTURE PIPING SCHEDULE

FIXTURE TYPE	CW BRANCH	HW BRANCH	WASTE BRANCH	VENT BRANCH
BAR SINK	1/2"	1/2"	1 1/2"	1 1/4"
BATH TUB	1/2"	1/2"	1 1/2"	1 1/2"
CLOTHES WASHER	1/2"	1/2"	2"	1 1/2"
DRINKING FOUNTAIN	1/2"	-	1 1/4"	1 1/4"
FLOOR DRAIN	-	-	2"	1 1/2"
FLOOR SINK	-	-	4"	2"
HOSE BIBB	3/4"	-	-	-
KITCHEN SINK	1/2"	1/2"	2"	1 1/2"
LAVATORY	1/2"	1/2"	1 1/2"	1 1/4"
MOP SINK	1/2"	1/2"	3"	2"
SERVICE SINK	1/2"	1/2"	2"	1 1/2"
SHOWER	1/2"	1/2"	1 1/2"	1 1/2"
URINAL	3/4"	-	2"	1 1/2"
WATER CLOSET, FLUSH TANK	1/2"	-	4"	2"
WATER CLOSET, FLUSH VALVE	1"	-	4"	2"
WATER COOLER	1/2"	-	1 1/4"	1 1/4"

PIPING SERVING PLUMBING FIXTURES SHALL BE OF THE SIZES INDICATED ABOVE UNLESS INDICATED OTHERWISE ON THE PLUMBING FLOOR PLANS.

GENERAL NOTES

THE PLUMBING CONTENT OF THE PLUMBING DRAWINGS IS DIAGRAMMATIC AND NOT NECESSARILY TO SCALE.

THE CONTRACTOR SHALL MAKE MINOR ADJUSTMENTS TO LOCATIONS OF DUCTWORK, EQUIPMENT, PIPING, AND SUPPORTS IN ORDER TO COORDINATE WITH BUILDING CONSTRUCTION AND WORK OF OTHER TRADES.

REFER TO SCHEDULES AND SPECIFICATIONS FOR EQUIPMENT AND MATERIALS OF CONSTRUCTION.

INSTALL WASTE PIPING CLEANOUTS WHERE INDICATED AND AS REQUIRED BY 2018 INTERNATIONAL PLUMBING CODE, GAINING ACCESS TO SOIL PIPING FOR CLEANOUT BY REMOVAL OF A TOILET IS NOT A CODE-COMPLIANT CLEANOUT AND WILL NOT BE ACCEPTED.

**CA**  
**chamberlin**  
437 Main Street  
Grand Junction, CO 81501  
970.242.6804  
chamberlinarchitects.com



**REALSTON MECHANICAL CONSULTING, LLC**  
Engineering for HVAC, Refrigeration, and Plumbing  
350 REDO CANYON COURT, GRAND JUNCTION, CO 81507-9584  
Phone: 970-424-9079 Mobile: 970-250-1730 Email: chad@realstonmech.com

FOOD BANK OF THE ROCKIES

698 LONG ACRE DRIVE  
GRAND JUNCTION, COLORADO

PLUMBING DETAILS & LEGEND

NO: 11  
ISSUED FOR: 11  
DATE: 11

100% CONSTRUCTION DOCUMENTS  
BID PACKAGE #4, ABOVE GROUND

DATE: 08/25/2021  
SHEET NO: 2108

PROJECT NO: P201