

▲ Addendum No. 1 (2/14/20)

2019-20
 MAINTENANCE BUILDING

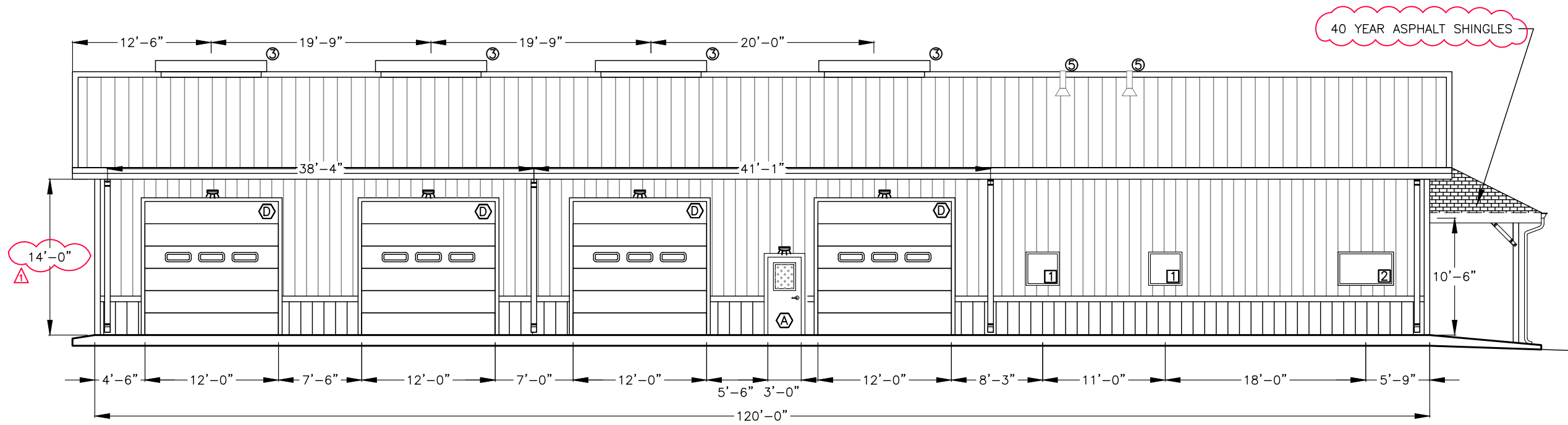


REVISIONS:	DATE	BY

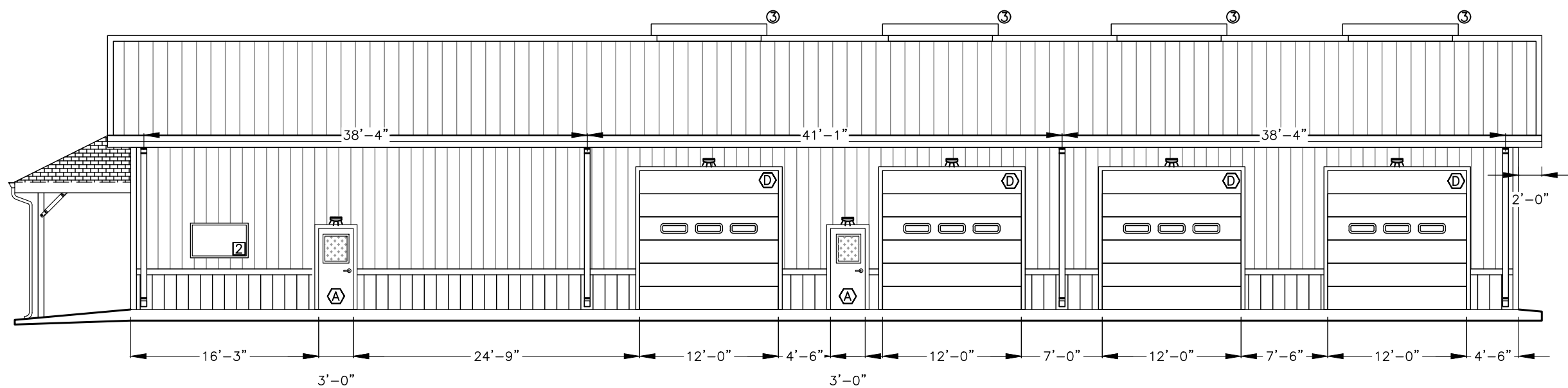
DESIGNER:	10/19
DRAFTER:	10/19
CHECKED BY:	
APPROVED:	
CHIEF ENGR.:	

DATE:	
PROJECT NO.:	
W2251-C5	
SHEET NO.:	4
OF 22	

CAMEO SHOOTING RANGE
 BUILDING PLAN




A
5 Building Elevation (North)
5'-4" 0 Ft. 5'-4" 10'-8"

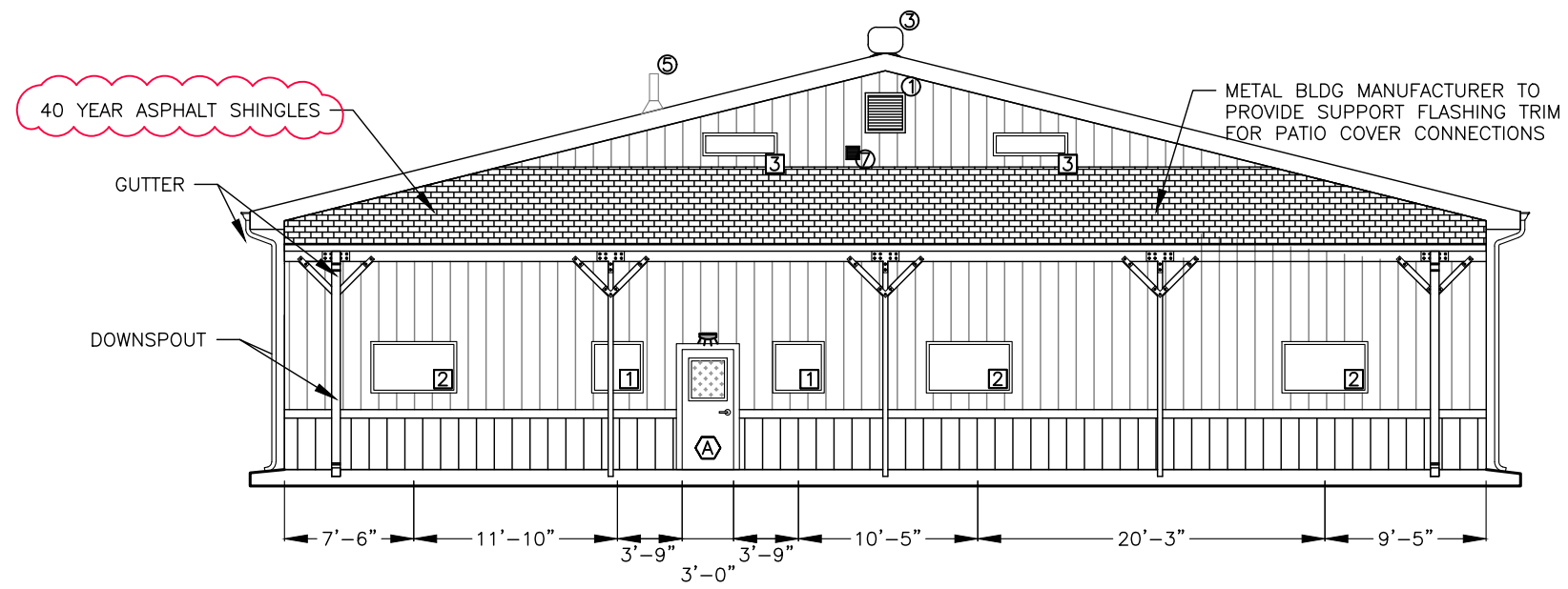


A
5 Building Elevation (South)
5'-4" 0 Ft. 5'-4" 10'-8"

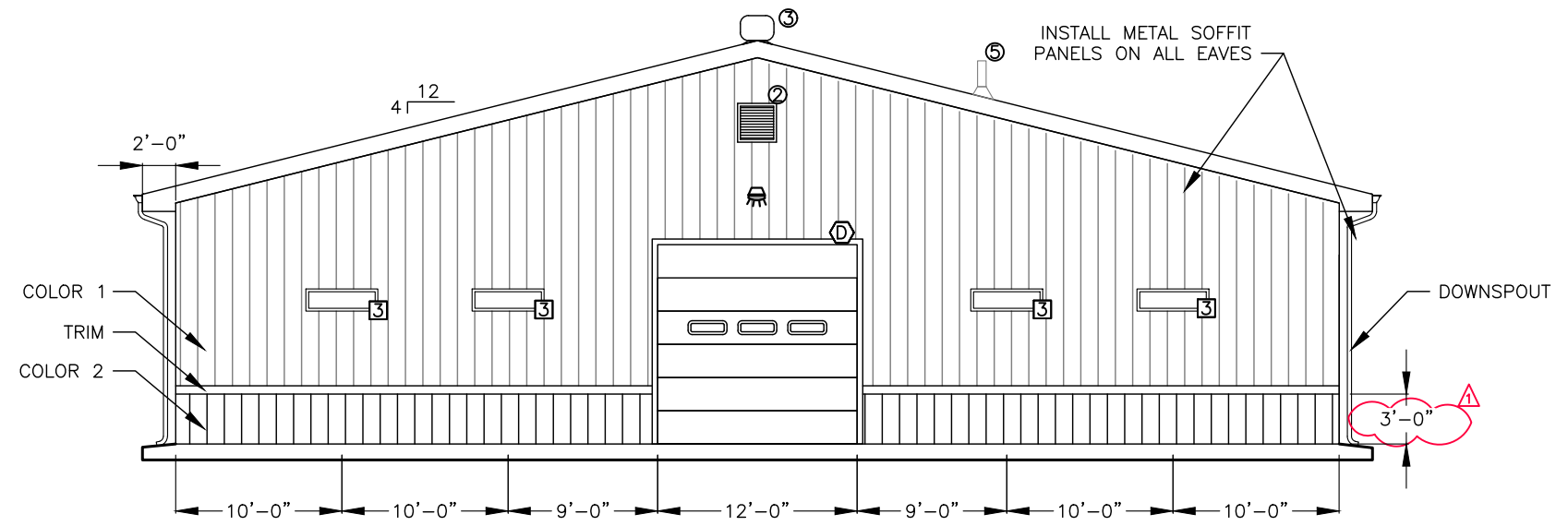
NOTES:
1. DOWNSPOUT SPACING IS APPROXIMATE. ADJUST AS NEEDED.

Addendum No. 1 (2/14/20)

2019-20		MAINTENANCE BUILDING	
			
DATE	DESIGNER	BY	REVISIONS
10/19	-	-	
PROJECT NO. W2251-C5	CHECKED BY:	DATE	
SHEET NO. 5	APPROVED:		
OF 22	CHIEF ENGR.:		
<p>CAMEO SHOOTING RANGE</p> <p>ELEVATION (1)</p>			



A Building Elevation (West)
6



B Building Elevation (East)
6

NOTES:
1. COLORS TO BE AGREED UPON PRIOR TO CONSTRUCTION

2019-20
MAINTENANCE BUILDING



REVISIONS:	DATE	BY

DESIGNER:	DATE:
	10/19
DRAFTER:	10/19
CHECKED BY:	
APPROVED:	
CHIEF ENGR.:	

PROJECT NO.	W2251-C5
SHEET NO.	6
OF	22

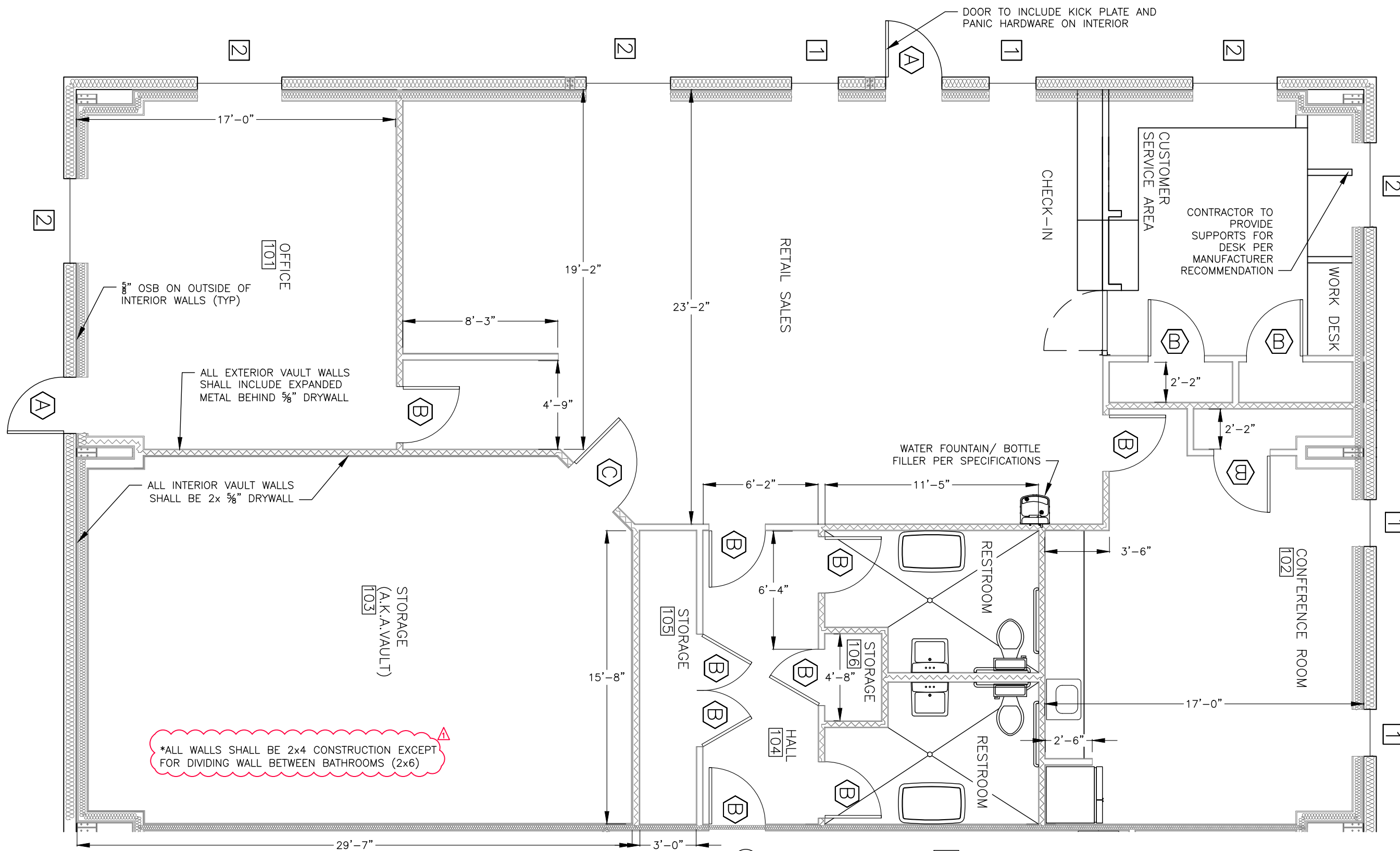
CAMEO SHOOTING RANGE
ELEVATION (2)



REVISIONS:	DATE	BY

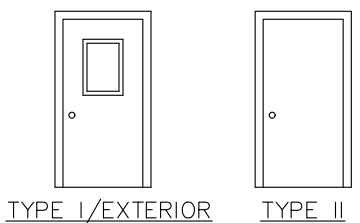
DESIGNER:	DRAWER:	CHECKED BY:	APPROVED:	CHIEF ENGR.:

DATE	PROJECT NO.	SHEET NO.	OF 22
10/19	W2251-C5	7	



*ALL WALLS SHALL BE 2x4 CONSTRUCTION EXCEPT FOR DIVIDING WALL BETWEEN BATHROOMS (2x6)

ID	DESCRIPTION	DOOR SIZE (WxH)	NOTES	QUANTITY
A	TYPE I	3'-0" x 7'-0"	SECURITY GLASS	4
B	TYPE II	3'-0" x 7'-0"	SOLID CORE	14
C	VAULT	3'-4" x 7'-0"	-	1
D	OVERHEAD	12'-0" x 12'-0"	INSULATED	9
E	SLIDING	7'-0" x 7'-0"	INSULATED	1



ID	DESCRIPTION	WINDOW SIZE	NOTES	QUANTITY
1	NON OPERABLE	3'-0" x 3'-0"	-	4
2	NON OPERABLE	3'-0" x 5'-0"	-	5
3	NON OPERABLE	1'-0" x 4'-0"	-	6

	FIBERGLASS BATT INSULATION
	SOUND INSULATION
	HIGH TRAFFIC CARPETING (900 sf)
	ACID STAINED CONCRETE (1700 sf) WITH 4" VINYL COVE BASE UNLESS SPECIFIED OTHERWISE

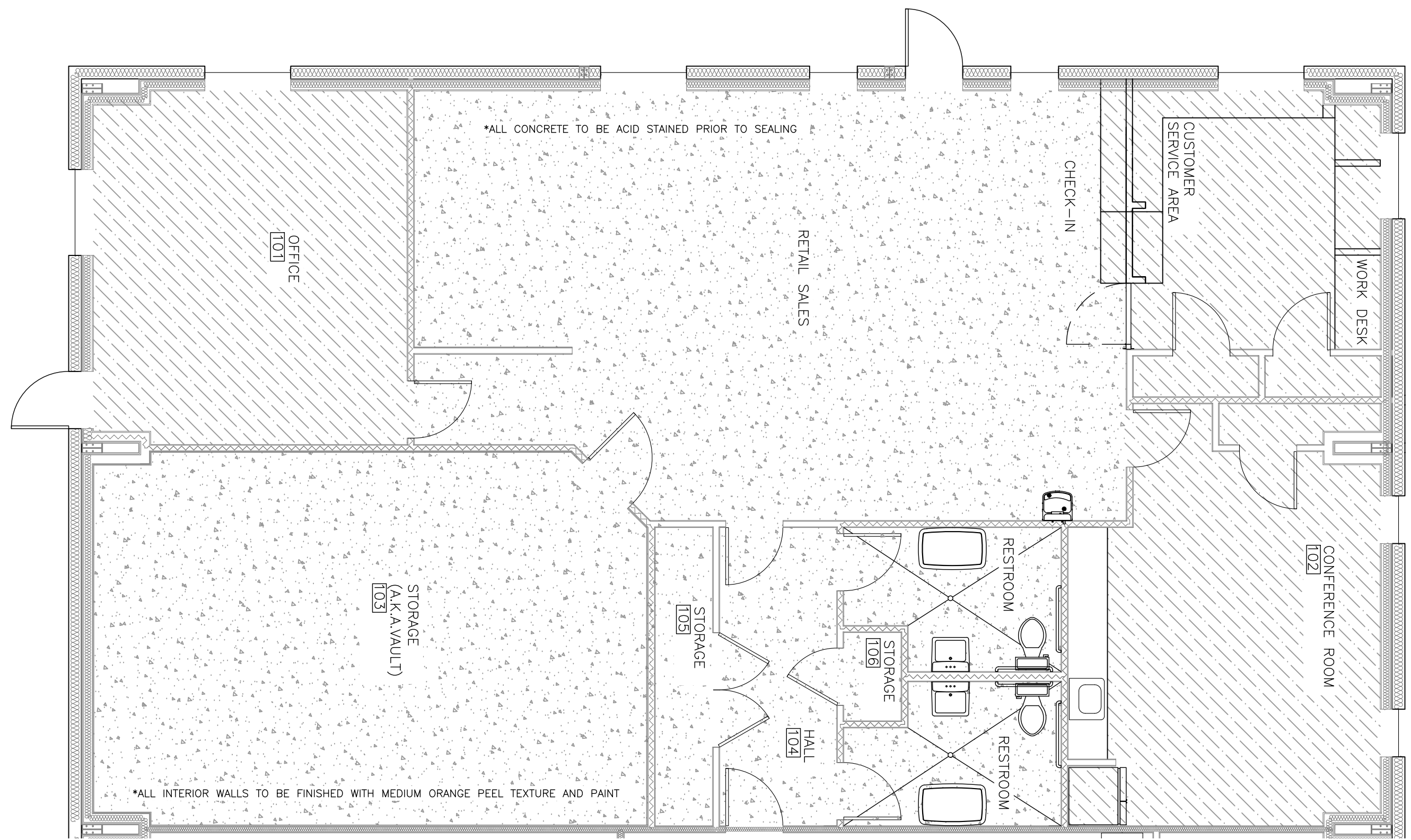
Addendum No. 1 (2/14/20)



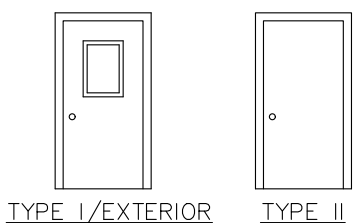
REVISIONS:	DATE	BY

DESIGNER:	10/19
DRAFTER:	10/19
CHECKED BY:	
APPROVED:	
CHIEF ENGR.:	

DATE:	
PROJECT NO.:	W25E1-C5
SHEET NO.:	8
OF 22	



ID	DESCRIPTION	DOOR SIZE (WxH)	NOTES	QUANTITY
A	TYPE I	3'-0" x 7'-0"	SECURITY GLASS	4
B	TYPE II	3'-0" x 7'-0"	SOLID CORE	14
C	VAULT	3'-4" x 7'-0"	-	1
D	OVERHEAD	12'-0" x 12'-0"	INSULATED	9
E	SLIDING	7'-0" x 7'-0"	INSULATED	1

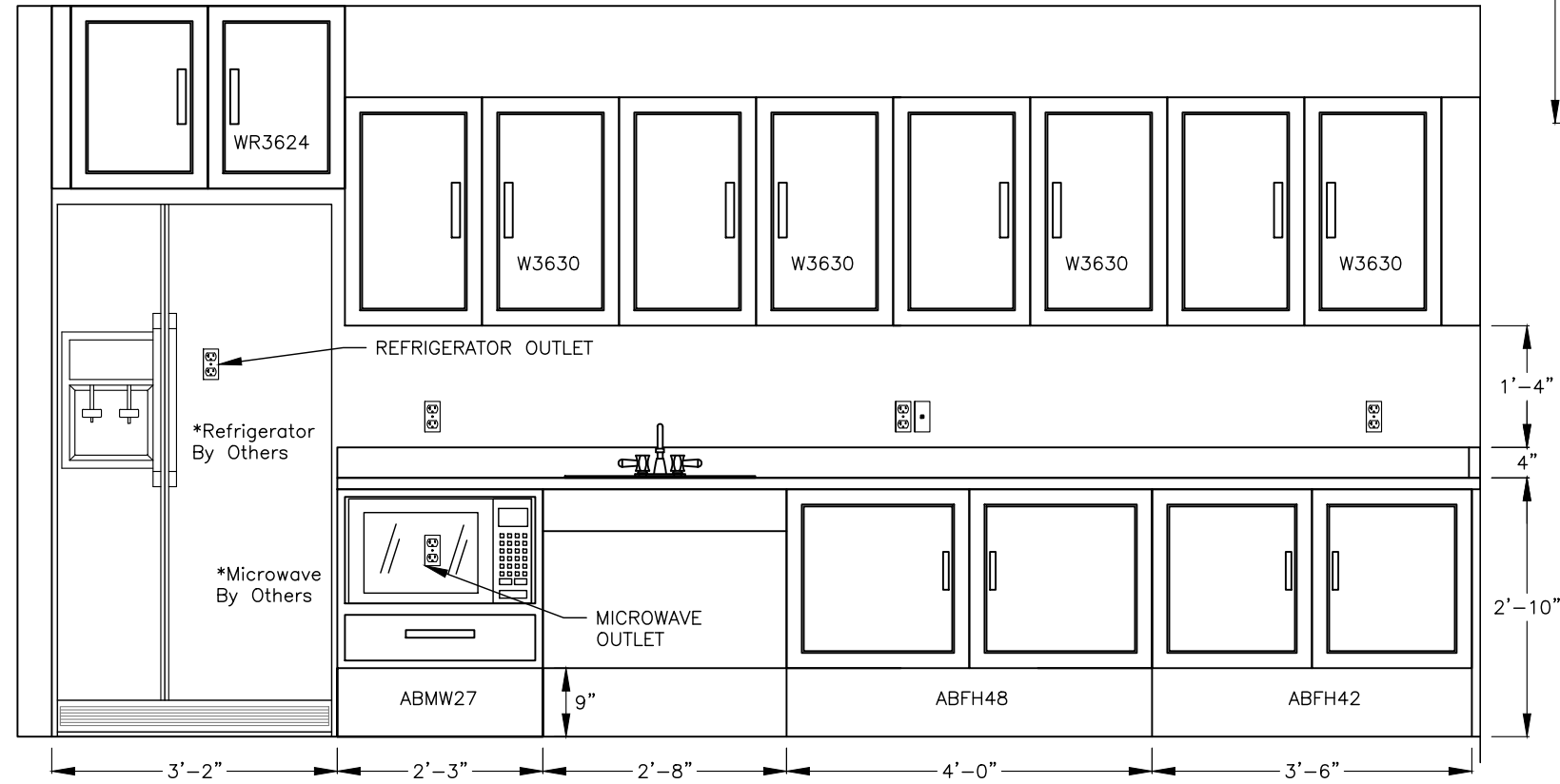
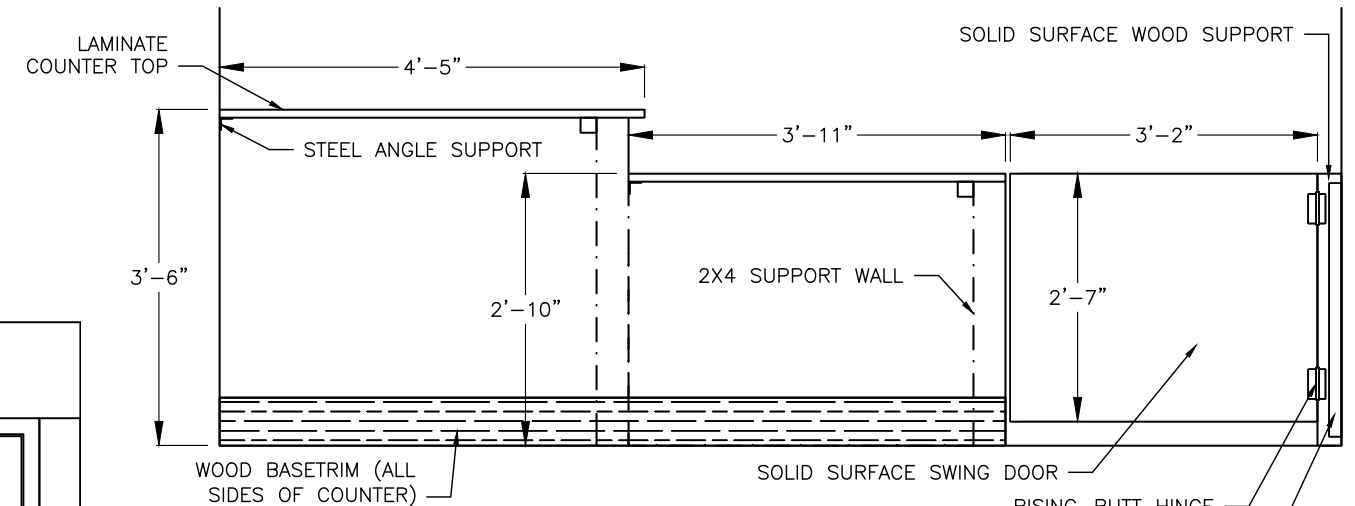
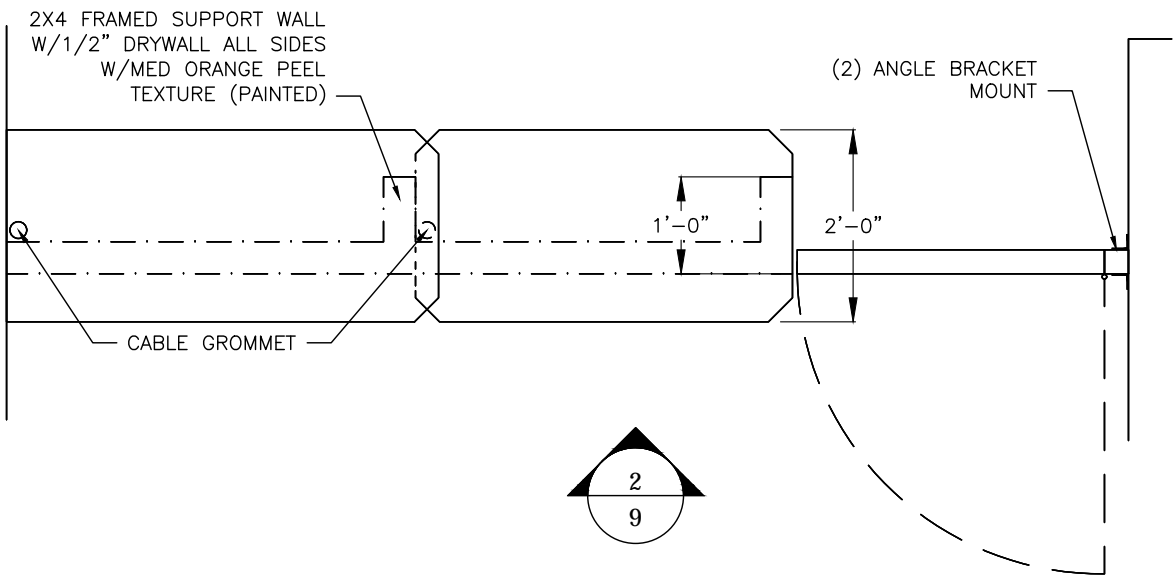
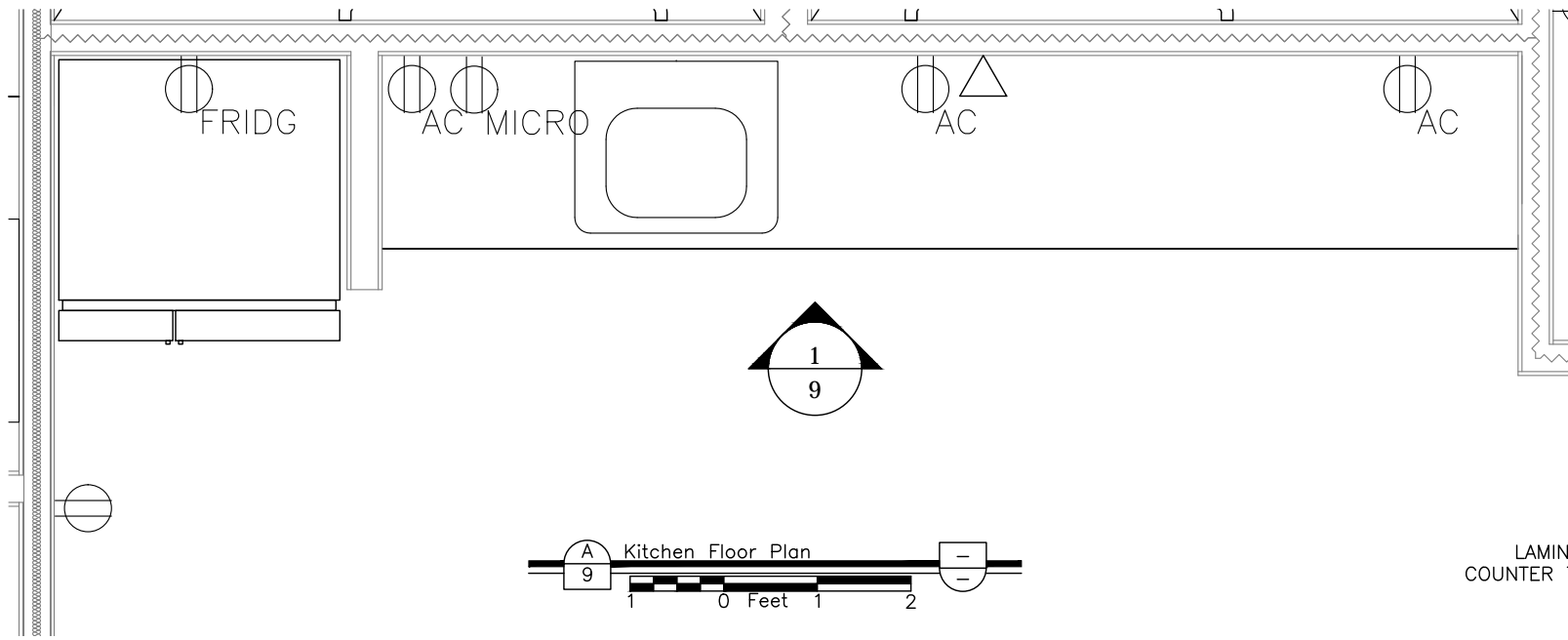


ID	DESCRIPTION	WINDOW SIZE	NOTES	QUANTITY
1	NON OPERABLE	3'-0" x 3'-0"	-	4
2	NON OPERABLE	3'-0" x 5'-0"	-	5
3	NON OPERABLE	1'-0" x 4'-0"	-	6

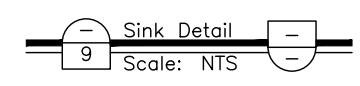
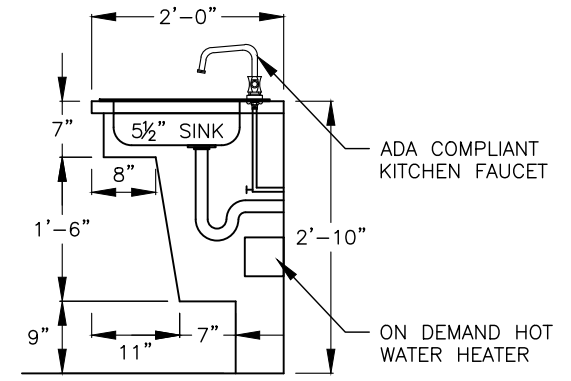
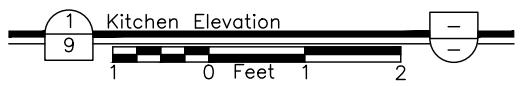
LEGEND

- FIBERGLASS BATT INSULATION
- SOUND INSULATION
- HIGH TRAFFIC CARPETING (900 sf)
- ACID STAINED CONCRETE (1700 sf) WITH 4" VINYL COVE BASE UNLESS SPECIFIED OTHERWISE

Addendum No. 1 (2/14/20)



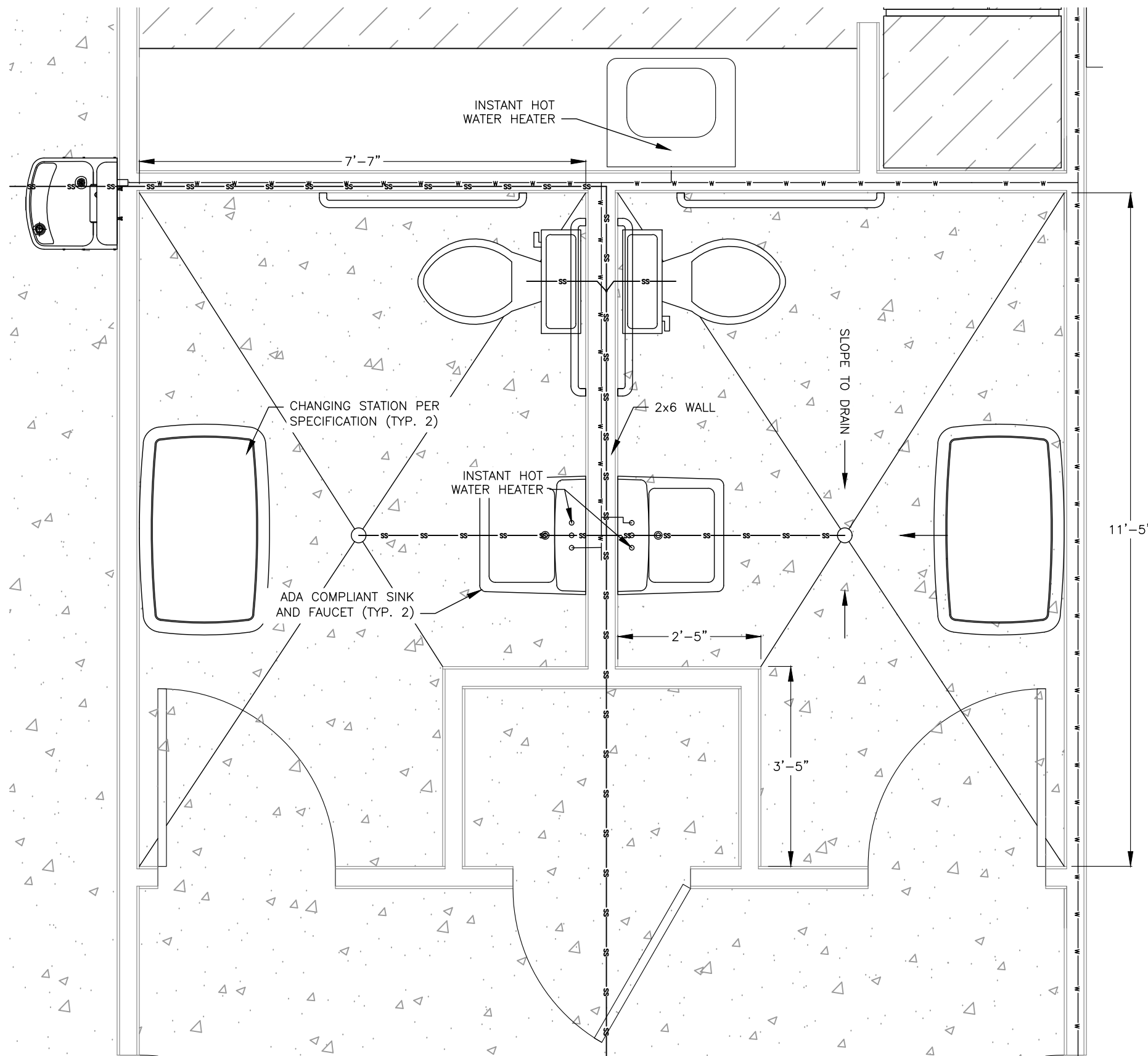
*CABINETS ARE BASED ON KRAFTMAID PASSPORT SERIES (ADA COMPLIANT)



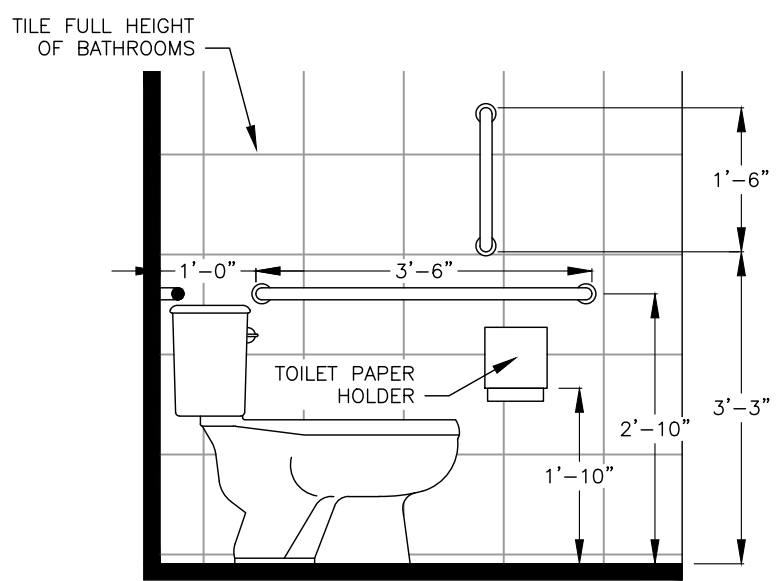
REVISIONS:	DATE	BY

DESIGNER:	10/19
DRAFTER:	10/19
CHECKED BY:	
APPROVED:	
CHIEF ENGR.:	

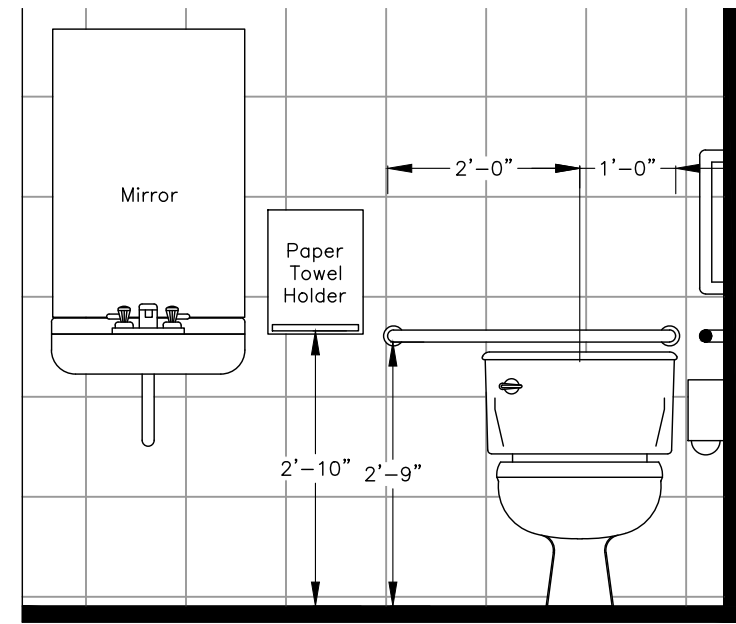
DATE:	PROJECT NO.:	DESIGNER:
	W2251-C5	
	SHEET NO.:	
	9	
	OF 22	



A
10 Bathroom Plan
1'-0" 0 Ft. 1'-0" 2'-0"



1
10 Bathroom Elevation
1'-0" 0 Ft. 1'-0" 2'-0"



2
10 Bathroom Elevation
1'-0" 0 Ft. 1'-0" 2'-0"



DESIGNER:	DATE:	REVISIONS:
DRAFTER:	10/19	
CHECKED BY:	10/19	
APPROVED:		
CHIEF ENGR.:		

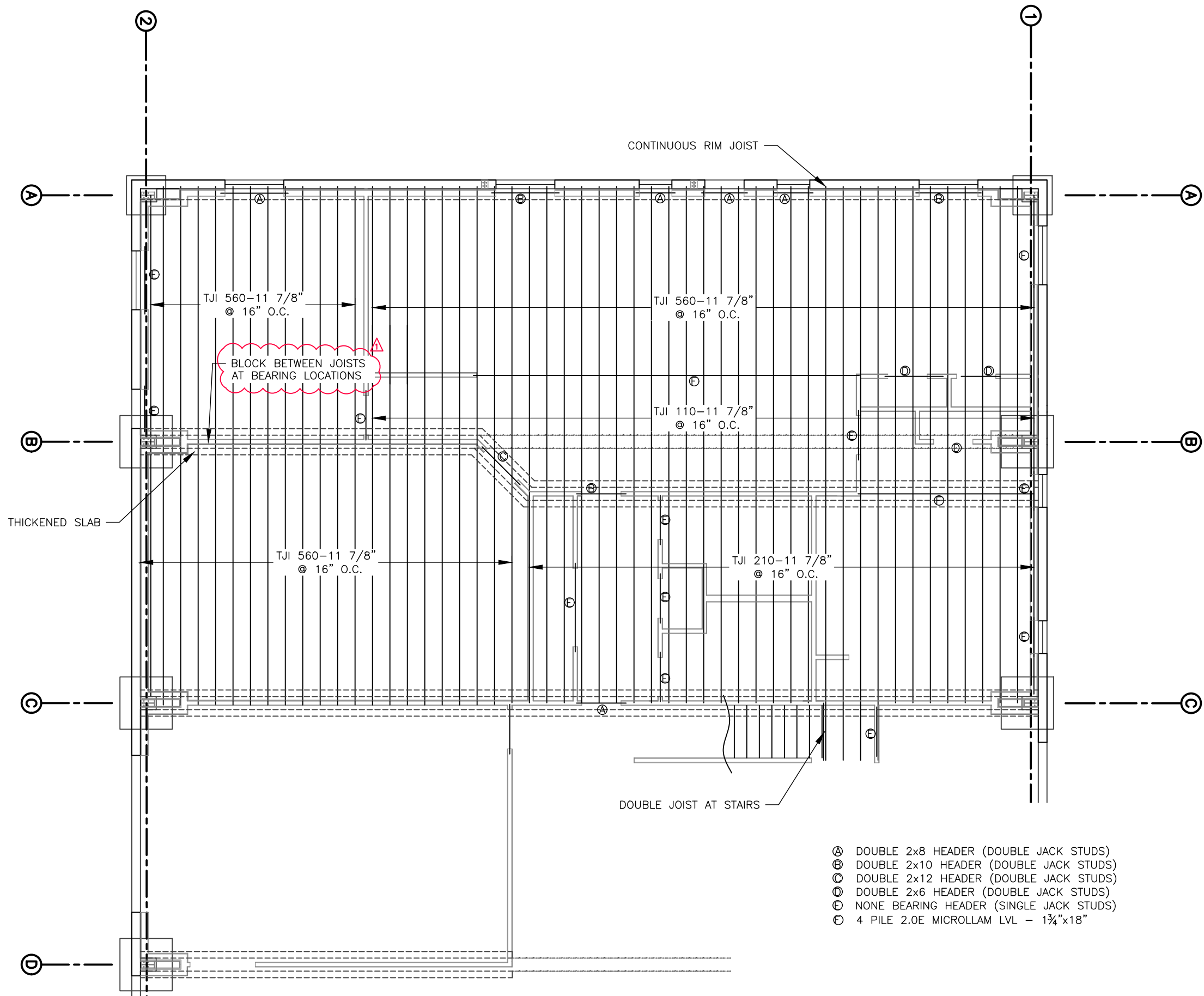
DATE:	DESIGNER:
PROJECT NO. W2251-C5	DRAFTER:
SHEET NO. 10	CHECKED BY:
10 OF 22	APPROVED:
	CHIEF ENGR.:



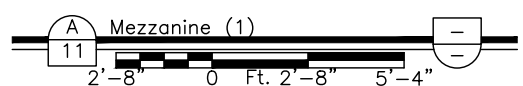
REVISIONS:	DATE	BY

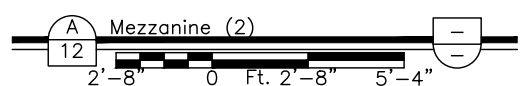
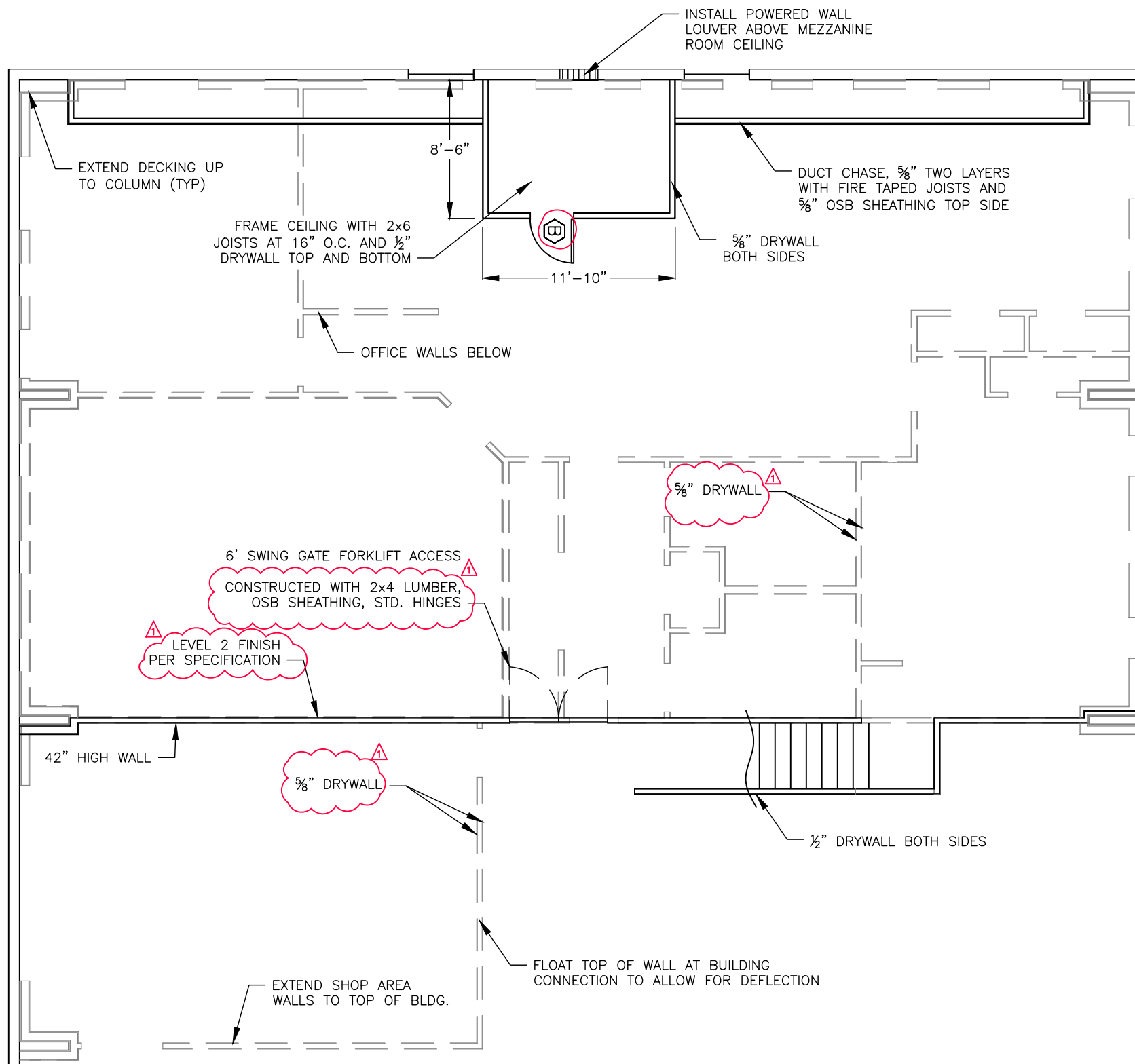
DESIGNER:	10/19
DRAFTER:	10/19
CHECKED BY:	
APPROVED:	
CHIEF ENGR.:	

DATE:	
PROJECT NO.:	
W25E1-C5	
SHEET NO.:	11
OF 22	



- Ⓐ DOUBLE 2x8 HEADER (DOUBLE JACK STUDS)
- Ⓑ DOUBLE 2x10 HEADER (DOUBLE JACK STUDS)
- Ⓒ DOUBLE 2x12 HEADER (DOUBLE JACK STUDS)
- Ⓓ DOUBLE 2x6 HEADER (DOUBLE JACK STUDS)
- Ⓔ NONE BEARING HEADER (SINGLE JACK STUDS)
- Ⓕ 4 PILE 2.0E MICROLLAM LVL - 1 3/4"x18"





△ Addendum No. 1 (2/14/20)

2019-20
MAINTENANCE BUILDING



REVISIONS:	DATE	BY

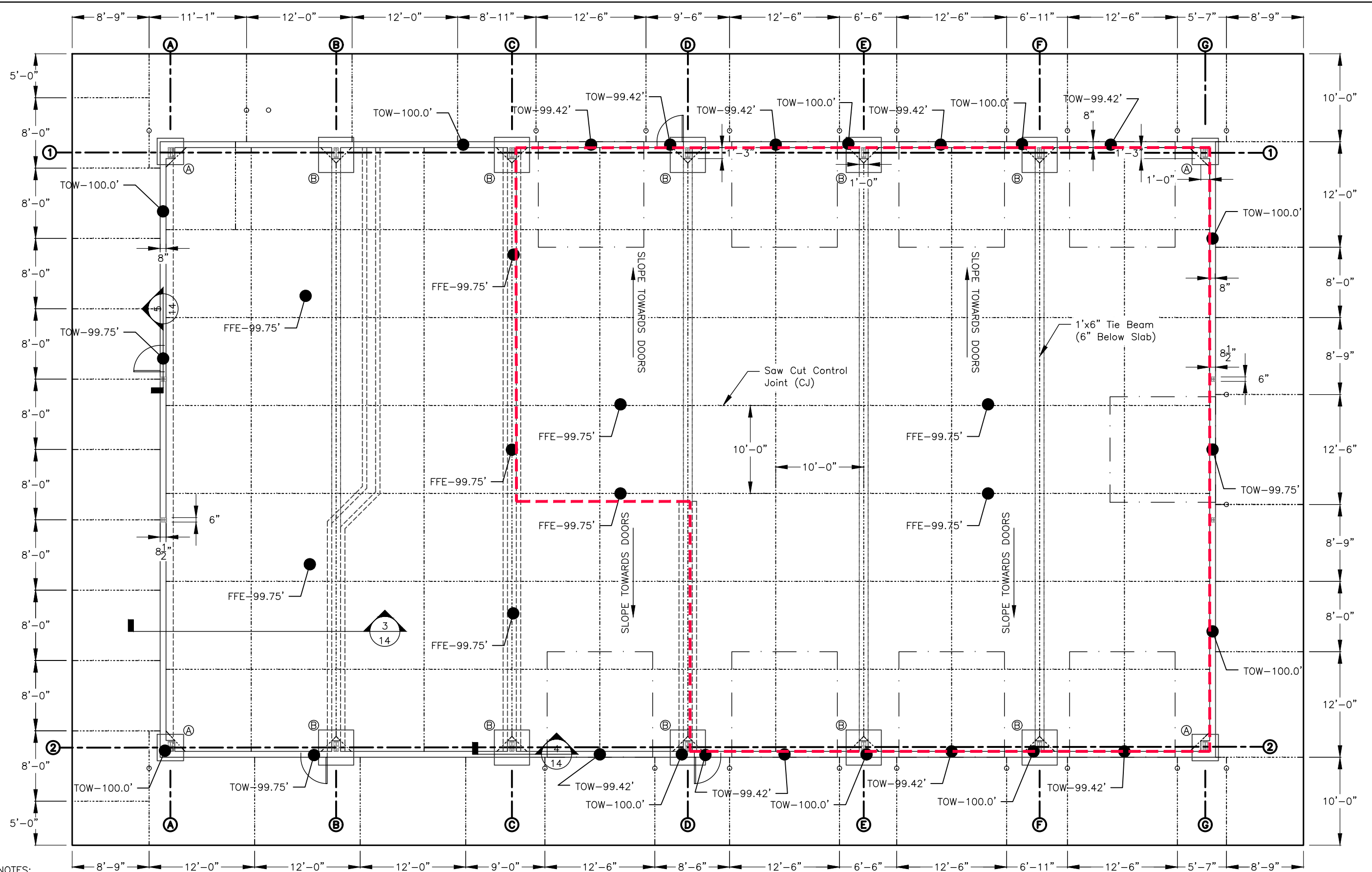
DESIGNER:	10/19
DRAFTER:	10/19
CHECKED BY:	
APPROVED:	
CHIEF ENGR.:	

DATE:	
PROJECT NO.:	
W2251-C5	
SHEET NO.:	12
OF 22	

CAMEO SHOOTING RANGE
MEZZANINE (2)



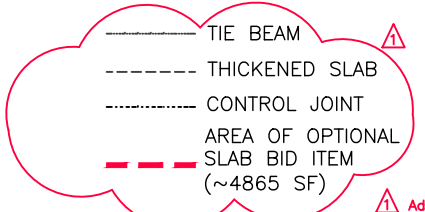
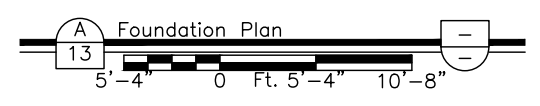
DESIGNER:	10/19
DRAFTER:	10/19
CHECKED BY:	
APPROVED:	
CHIEF ENGR.:	
DATE:	
PROJECT NO.:	
SHEET NO.:	13
OF 22	



- NOTES:
- FOUNDATION WALL SHALL BE A MINIMUM 6" ABOVE FINISHED EXTERIOR GRADE. NOTCH FOUNDATION AS NEEDED AT OPENINGS.
 - SLAB SHALL BE FLAT BETWEEN CENTER CONTROL JOINTS AND IN OFFICE AREA (EXCLUDING BATHROOM SLOPES)
 - NOTCH FOUNDATION AS NEEDED AT SLOPED SLAB LOCATION.
 - ALL JOINTS SHALL BE FILLED WITH SIKAFLEX SELF-LEVELING SEALANT OR APPROVED EQUAL.
 - DOWEL EXTERIOR APRON TO BUILDING FOUNDATION AT ALL DOOR LOCATIONS. 12" #3 SMOOTH DOWEL AT 12" O.C. EQUALLY SPACED BETWEEN APRON AND FOUNDATION.

FOUNDATION SCHEDULE:

A	3'-0"x3'-0"x1'-0" w/(5) #5 EQ. SP. EACH WAY
B	4'-0"x4'-0"x1'-0" w/(5) #5 EQ. SP. EACH WAY



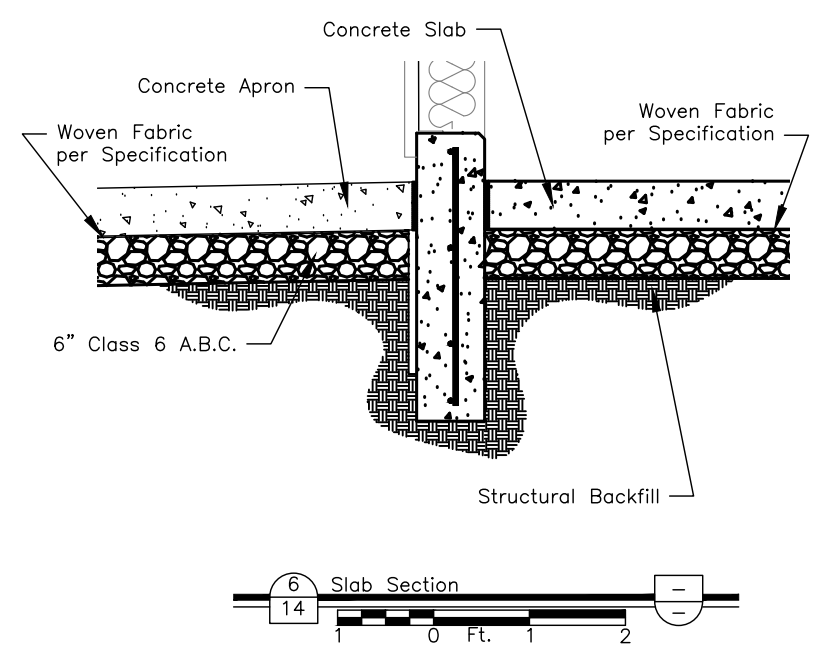
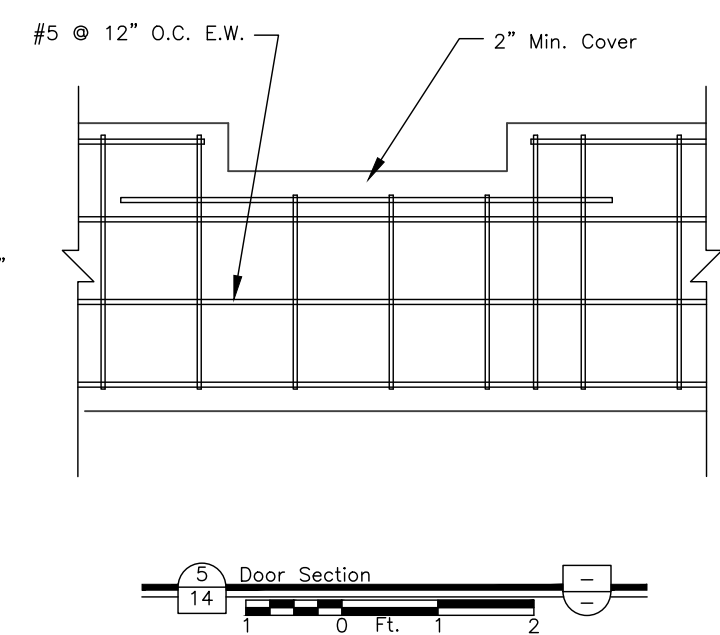
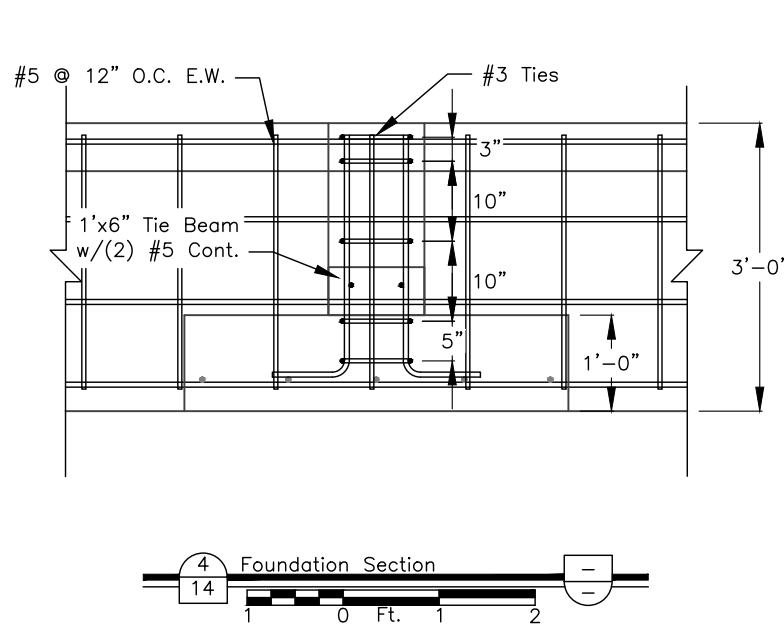
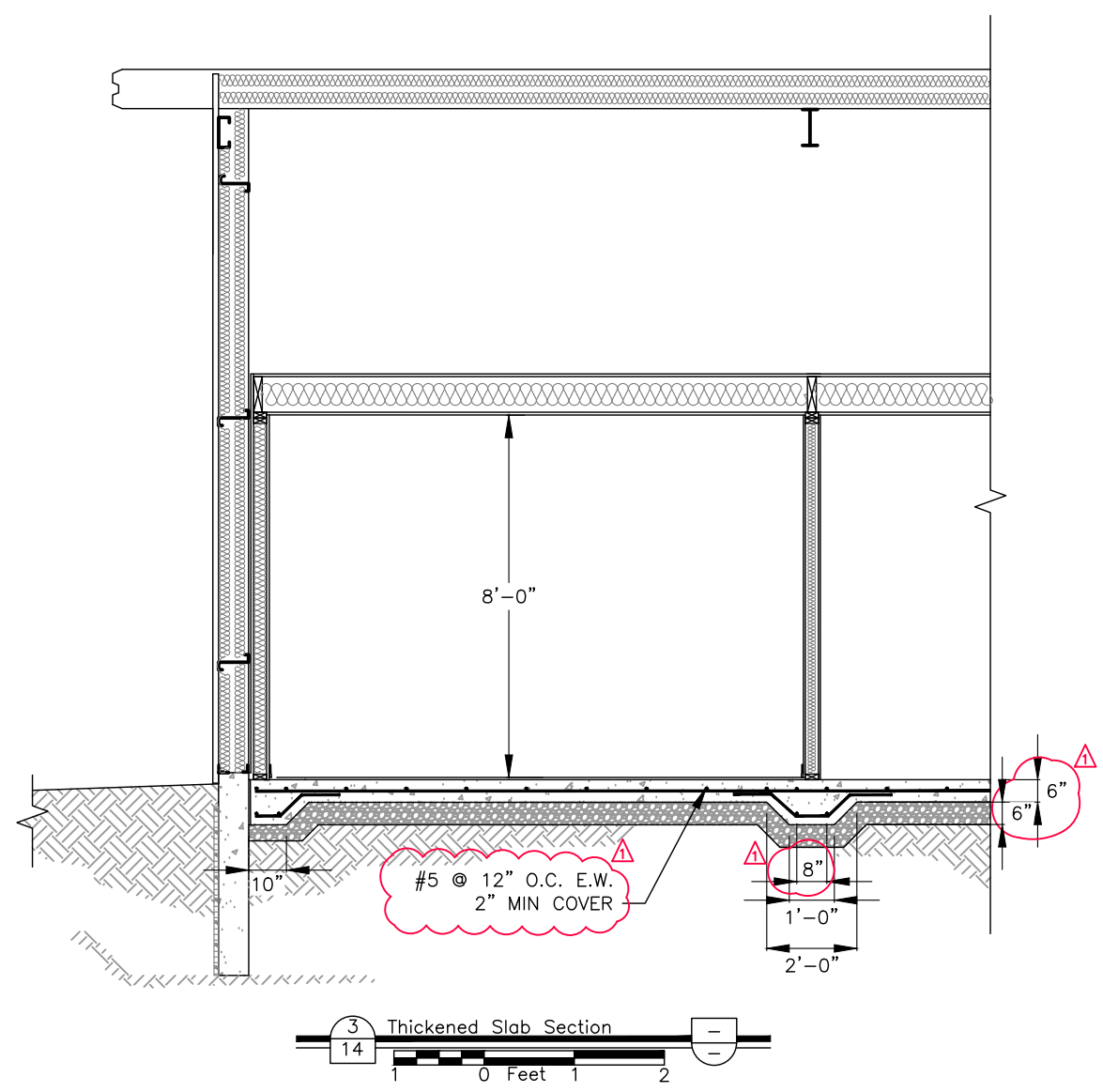
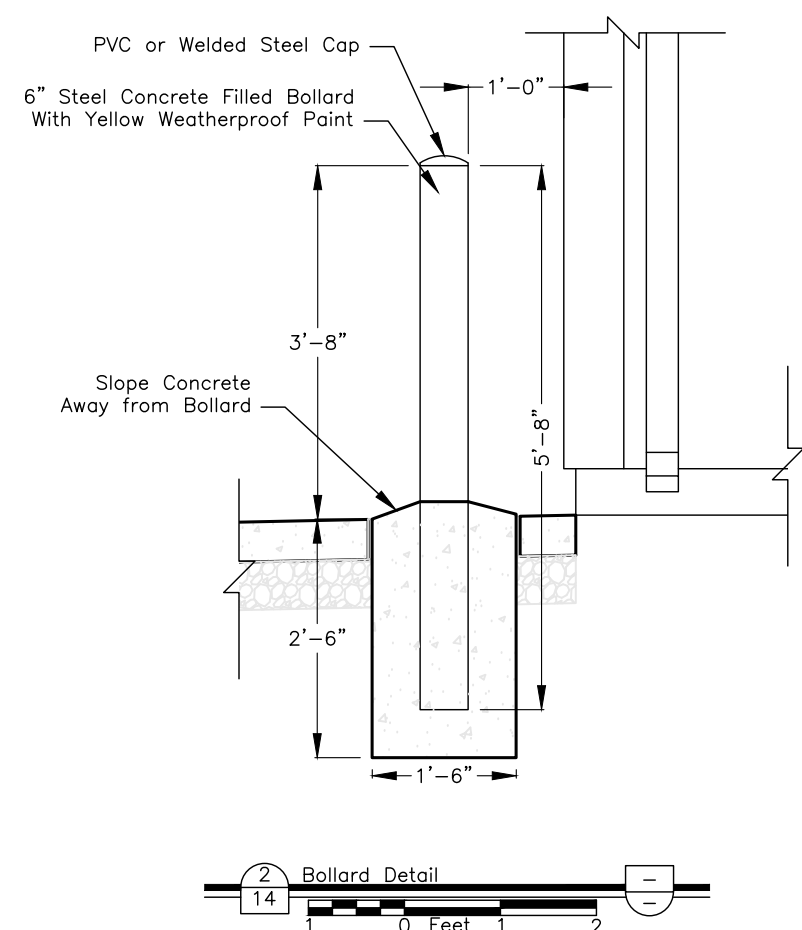
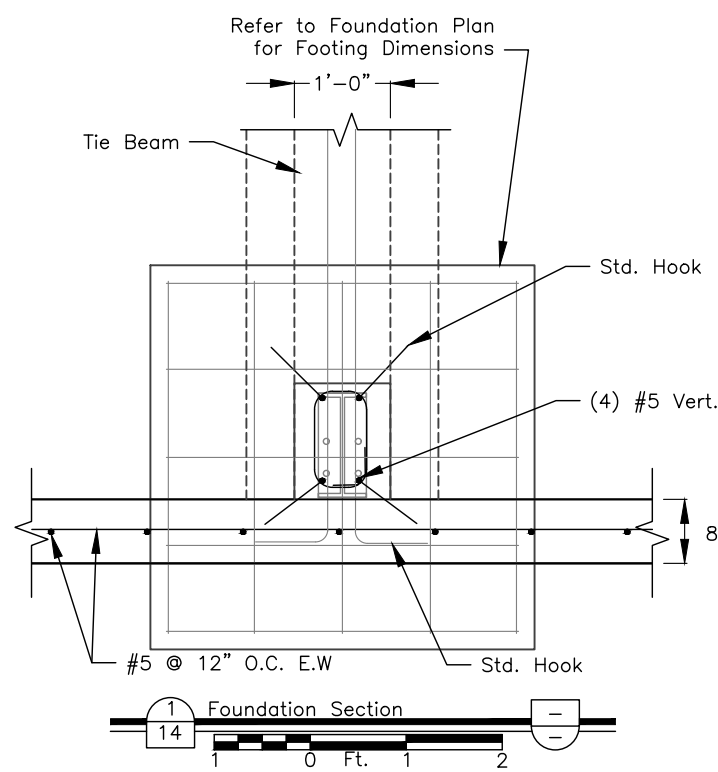
△ Addendum No. 1 (2/14/20)



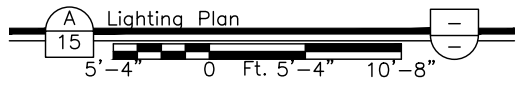
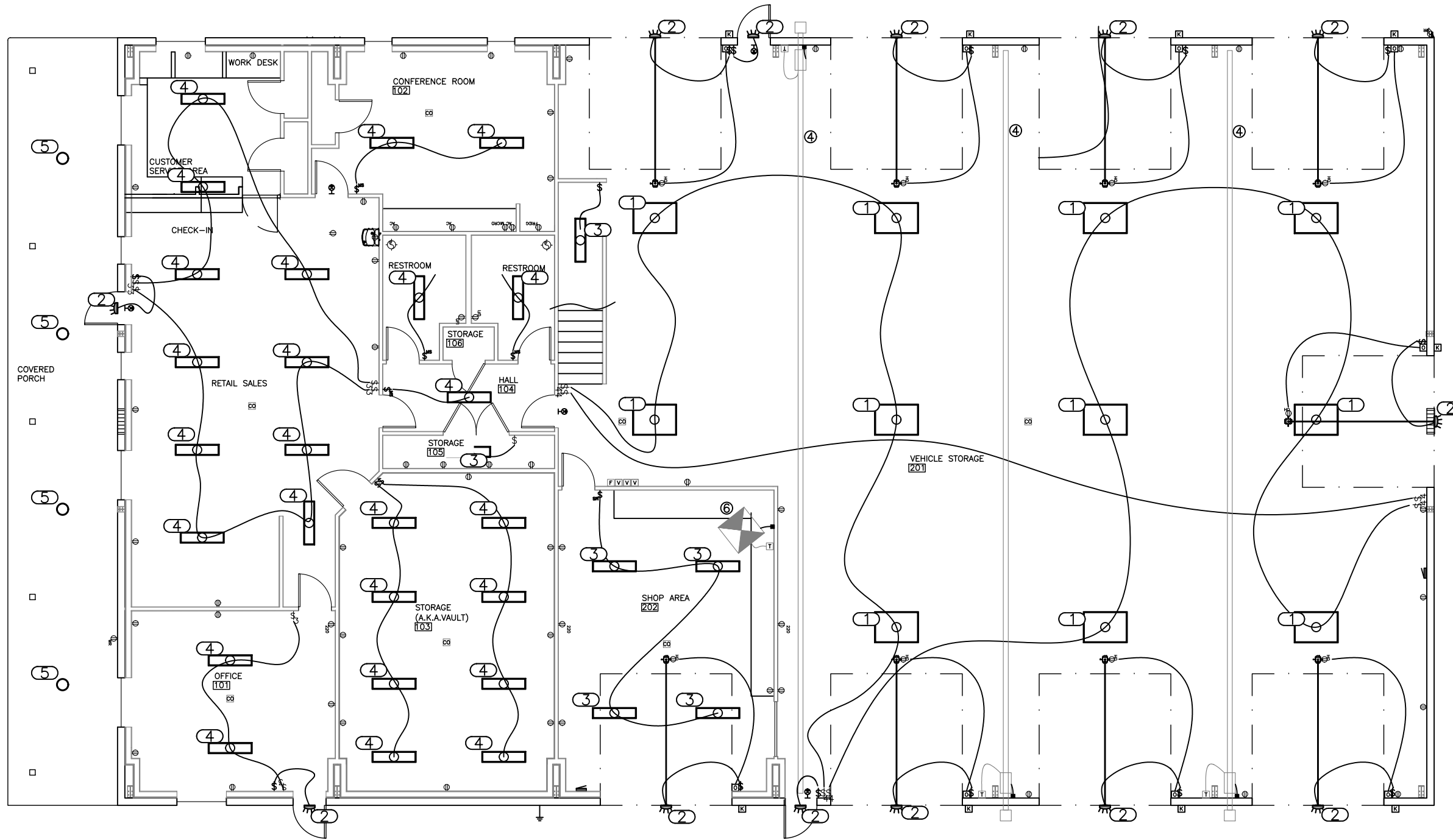
REVISIONS:	DATE	BY

DESIGNER:	
DRAFTER:	
CHECKED BY:	
APPROVED:	
CHIEF ENGR.:	

DATE:	10/19
PROJECT NO.:	W2251-C5
SHEET NO.:	14
OF 22	



▲ Addendum No. 1 (2/14/20)



LIGHTING SCHEDULE					
ID	DESCRIPTION	SIZE	TYPE	NOTES	QUANTITY
1	Interior High-Bay Lighting	3'-0" x 4'-0"	HB-1	-	15
2	Exterior Wall Packs	-	WP-1	-	12
3	Mechanical and IT Room Lighting	1'-0" x 4'-0"	FF-4	-	6
4	Main Lighting	1'-0" x 4'-0"	FF-1	Dual Circuit	25
5	Exterior Patio Recessed Lighting	13"d	RL-1	-	4

ELECTRICAL LEGEND

LIGHTING

- ☉ CEILING OR WALL MOUNTED HID LUMINAIRE
- ☐ SURFACE MOUNTED FLUORESCENT LUMINAIRE
- ☐ RECESS MOUNTED FLUORESCENT LUMINAIRE
- ☉ CEILING OR WALL MOUNTED EXIT SIGN, INSTALL FACES AS INDICATED BY SHADING
- ☀ EXTERIOR FULL CUTOFF LIGHT WITH PHOTOVOLTAIC SENSOR

SCHEMATIC WIRING GRAPHICS

- Ⓜ METER
- ⚡ GROUND CONNECTION

POWER

- Ⓢ STRAIGHT BLADE DUPLEX RECEPTACLE
- Ⓢ 220V RECEPTACLE

SWITCHING

- Ⓢ WALL MOUNTED SWITCH
- Ⓢ SUBSCRIPTS:
 - 3 = 3-WAY
 - 4 = 4-WAY
 - MS = MOTION SENSOR

COMMUNICATION SYSTEM

- ▽ SINGLE WALL MOUNTED DATA OUTLET

HEATING/COOLING SYSTEM

- T WALL MOUNTED THERMOSTAT
- F WALL MOUNTED FAN/LOUVER CONTROL
- CO FIRE/ CARBON MONOXIDE DETECTOR
- V WALL MOUNTED RIDGE VENT CONTROL

NOTE: ALL SYMBOLS SHOWN ON LEGEND ARE NOT NECESSARILY USED.

2019-20

MAINTENANCE BUILDING

DESIGNER: _____ DATE: _____

DRAFTER: _____ REVISIONS: _____

CHECKED BY: _____ 10/19

APPROVED: _____ 10/19

CHIEF ENGR: _____

PROJECT NO. W22E1-C5

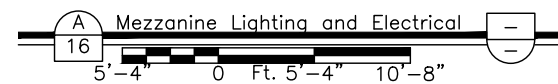
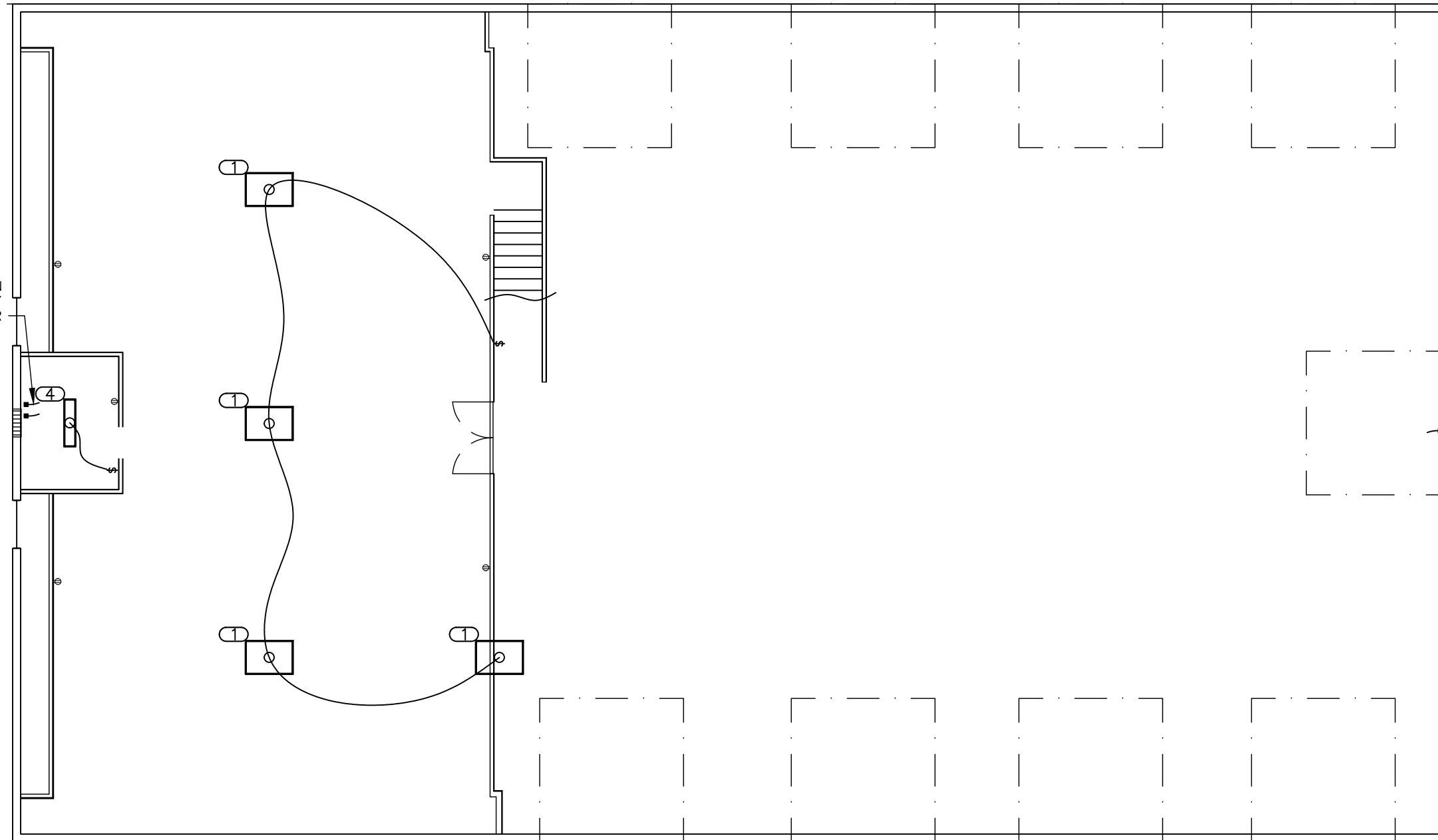
SHEET NO. 15

OF 22

CAMEO SHOOTING RANGE

LIGHTING PLAN

PROVIDE ELECTRICAL CONNECTION FOR FURNACE AS REQUIRED BY MANUFACTURER



LIGHTING SCHEDULE					
ID	DESCRIPTION	SIZE	TYPE	NOTES	QUANTITY
1	Interior High-Bay Lighting	3'-0" x 4'-0"	HB-1	-	15
2	Exterior Wall Packs	-	WP-1	-	12
3	Mechanical and IT Room Lighting	1'-0" x 4'-0"	FF-4	-	6
4	Main Lighting	1'-0" x 4'-0"	FF-1	Dual Circuit	25
5	Exterior Patio Recessed Lighting	13"d	RL-1	-	4

- LIGHTING**
- CEILING OR WALL MOUNTED HID LUMINAIRE
 - SURFACE MOUNTED FLUORESCENT LUMINAIRE
 - RECESS MOUNTED FLUORESCENT LUMINAIRE
 - CEILING OR WALL MOUNTED EXIT SIGN, INSTALL FACES AS INDICATED BY SHADING
 - EXTERIOR FULL CUTOFF LIGHT WITH PHOTOVOLTAIC SENSOR
- SCHEMATIC WIRING GRAPHICS**
- METER
 - GROUND CONNECTION

ELECTRICAL LEGEND

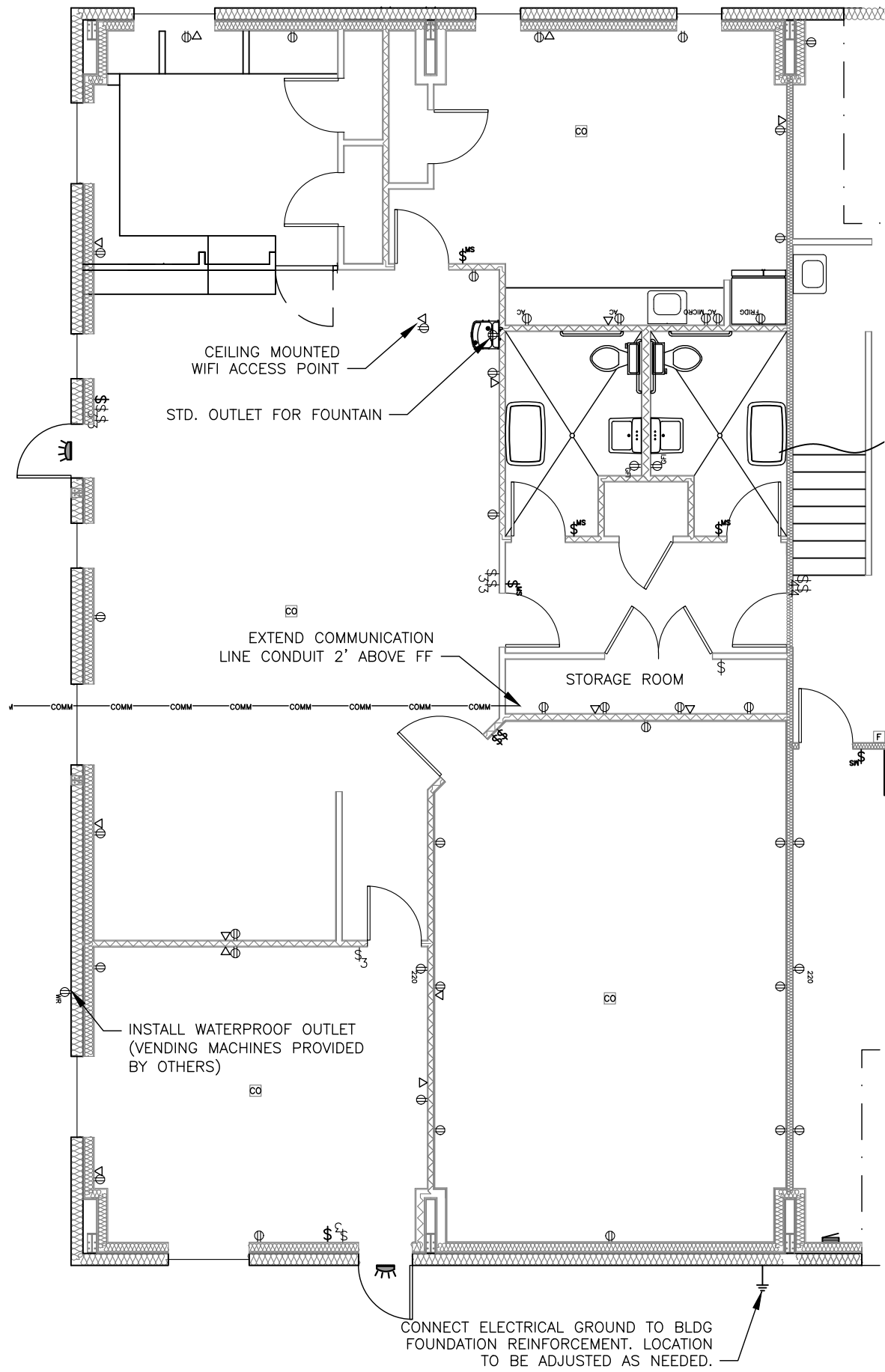
- POWER**
- STRAIGHT BLADE DUPLEX RECEPTACLE
- SUBSCRIPTS:**
- GFI = GROUND FAULT INTERRUPTER
 - SS = SURGE SUPPRESSION
 - AC = 6" ABOVE COUNTER
 - WR = WATER RESISTANT
- 220V RECEPTACLE
- CONNECTION TO PRE-WIRED EQUIPMENT BREAKER PANEL
 - KEYPAD REMOTE ENTRY
 - PUSH BUTTON OHV OPENER

- SWITCHING**
- WALL MOUNTED SWITCH
- SUBSCRIPTS:**
- 3 = 3-WAY
 - 4 = 4-WAY
 - MS = MOTION SENSOR
- COMMUNICATION SYSTEM**
- SINGLE WALL MOUNTED DATA OUTLET
- HEATING/COOLING SYSTEM**
- WALL MOUNTED THERMOSTAT
 - WALL MOUNTED FAN/LOUVER CONTROL
 - FIRE/ CARBON MONOXIDE DETECTOR
 - WALL MOUNTED RIDGE VENT CONTROL

NOTE: ALL SYMBOLS SHOWN ON LEGEND ARE NOT NECESSARILY USED.



DATE	DESIGNER	10/19	REVISIONS	DATE	BY
PROJECT NO. W2251-C5	DRAFTER	-			
SHEET NO. 16	CHECKED BY:				
OF 22	APPROVED:				
	CHIEF ENGR:				

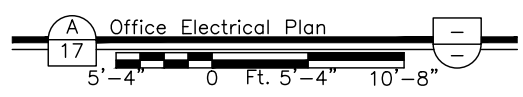


ELECTRICAL LEGEND

LIGHTING	POWER	SWITCHING
○-○-○ CEILING OR WALL MOUNTED HID LUMINAIRE	⊖ STRAIGHT BLADE DUPLEX RECEPTACLE	⌘ WALL MOUNTED SWITCH
□ SURFACE MOUNTED FLUORESCENT LUMINAIRE	SUBSCRIPTS:	3 = 3-WAY
□ RECESS MOUNTED FLUORESCENT LUMINAIRE	GFI = GROUND FAULT INTERRUPTER	4 = 4-WAY
⊙ CEILING OR WALL MOUNTED EXIT SIGN, INSTALL FACES AS INDICATED BY SHADING	SS = SURGE SUPPRESSION	MS = MOTION SENSOR
☀ EXTERIOR FULL CUTOFF LIGHT WITH PHOTOVOLTAIC SENSOR	AC = 6" ABOVE COUNTER	▽ SINGLE WALL MOUNTED DATA OUTLET
SCHEMATIC WIRING GRAPHICS	220V RECEPTACLE	HEATING/COOLING SYSTEM
⊕ METER	⊖ CONNECTION TO PRE-WIRED EQUIPMENT	T WALL MOUNTED THERMOSTAT
⊕ GROUND CONNECTION	⊖ BREAKER PANEL	F WALL MOUNTED FAN/LOUVER CONTROL
	⊖ KEYPAD REMOTE ENTRY	CO FIRE/ CARBON MONOXIDE DETECTOR
	⊖ PUSH BUTTON OHD OPENER	V WALL MOUNTED RIDGE VENT CONTROL

NOTE: ALL SYMBOLS SHOWN ON LEGEND ARE NOT NECESSARILY USED.

- NOTES:
1. CONTRACTOR TO INSTALL BOXES AND CONDUIT FOR COMMUNICATION LINES ONLY. LINES TO BE PULLED BY OTHERS.
 2. CONTRACTOR SHALL PROVIDE PULL LINES FROM CONNECTION POINT TO STORAGE ROOM WITH MINIMUM 2' EXTENSION ON EACH END.
 3. USE 1" CONDUIT TO SERVICE UP TO 2 LINES, 1.5" FOR UP TO 4 LINES, AND 2" FOR GREATER.
 4. OUTLET LOCATIONS APPROXIMATE. ADJUST AS NEEDED TO ACCOMMODATE FRAMING.



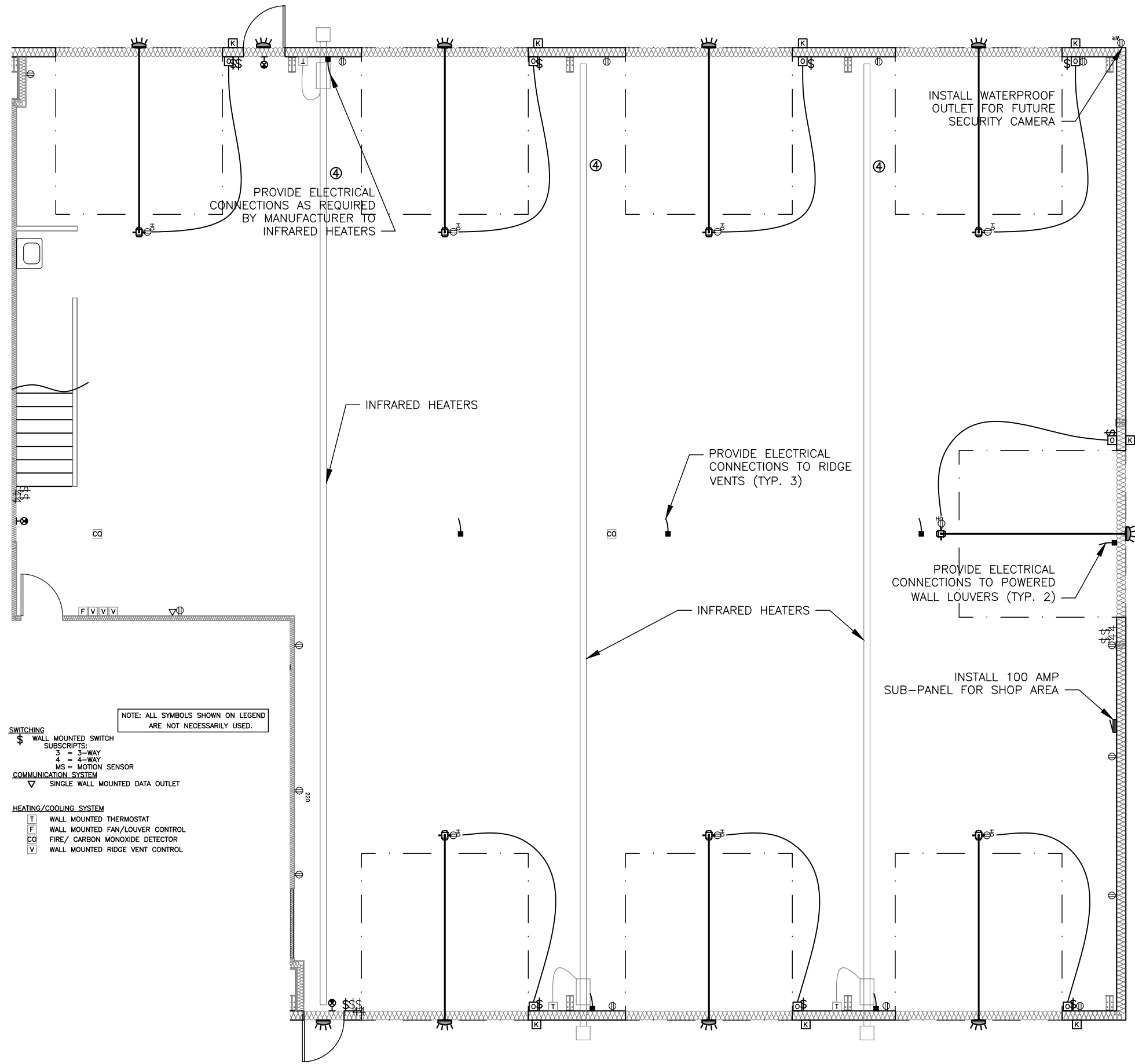
2019-20

MAINTENANCE BUILDING

DESIGNER:	10/19
DRAFTER:	10/19
CHECKED BY:	
APPROVED:	
CHIEF ENGR.:	

DATE:	PROJECT NO.:	DATE:	BY:
	W2251-C5		
	SHEET NO.:		
	17		
	OF 22		

CAMEO SHOOTING RANGE
OFFICE ELECTRICAL



PROVIDE ELECTRICAL CONNECTIONS AS REQUIRED BY MANUFACTURER TO INFRARED HEATERS

INSTALL WATERPROOF OUTLET FOR FUTURE SECURITY CAMERA

PROVIDE ELECTRICAL CONNECTIONS TO RIDGE VENTS (TYP. 3)

PROVIDE ELECTRICAL CONNECTIONS TO POWERED WALL LOUVERS (TYP. 2)

INSTALL 100 AMP SUB-PANEL FOR SHOP AREA

INFRARED HEATERS

INFRARED HEATERS

ELECTRICAL LEGEND

LIGHTING

- ⊕ ⊖ CEILING OR WALL MOUNTED HID LUMINAIRE
- ○ SURFACE MOUNTED FLUORESCENT LUMINAIRE
- ▭ ◻ RECESS MOUNTED FLUORESCENT LUMINAIRE
- ⊙ ⊗ CEILING OR WALL MOUNTED EXIT SIGN, INSTALL FACES AS INDICATED BY SHADING
- ☀ EXTERIOR FULL CUTOFF LIGHT WITH PHOTOVOLTAIC SENSOR

SCHEMATIC WIRING GRAPHICS

- M METER
- ⚡ GROUND CONNECTION

POWER

- ⊕ STRAIGHT BLADE DUPLEX RECEPTACLE
- ⊕ SUBSCRIPTS:
3 = 3-WAY
4 = 4-WAY
MS = MOTION SENSOR
- GFI = GROUND FAULT INTERRUPTER
- SS = SURGE SUPPRESSION
- AC = 6" ABOVE COUNTER
- WR = WATER RESISTANT
- 220V RECEPTACLE
- CONNECTION TO PRE-WIRED EQUIPMENT
- BREAKER PANEL
- KEYPAD REMOTE ENTRY
- PUSH BUTTON OHD OPENER

SWITCHING

- ⊕ WALL MOUNTED SWITCH
- ⊕ SUBSCRIPTS:
3 = 3-WAY
4 = 4-WAY
MS = MOTION SENSOR

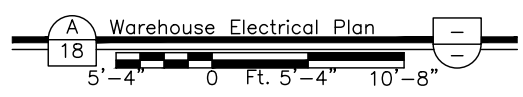
COMMUNICATION SYSTEM

- ▽ SINGLE WALL MOUNTED DATA OUTLET

HEATING/COOLING SYSTEM

- T WALL MOUNTED THERMOSTAT
- F WALL MOUNTED FAN/LOUVER CONTROL
- CO FIRE/ CARBON MONOXIDE DETECTOR
- V WALL MOUNTED RIDGE VENT CONTROL

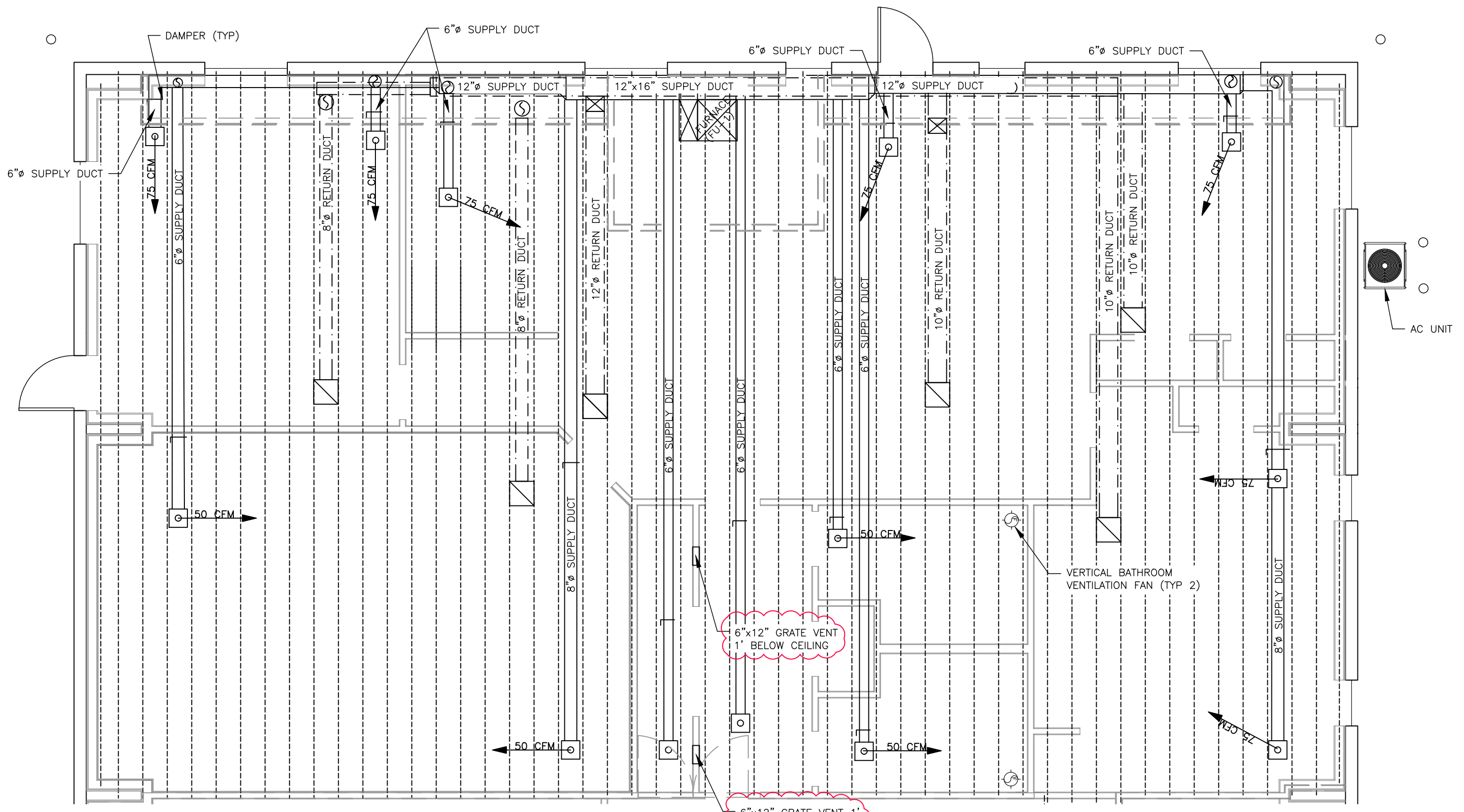
NOTE: ALL SYMBOLS SHOWN ON LEGEND ARE NOT NECESSARILY USED.



REVISIONS:	DATE	BY

DESIGNER:	10/19
DRAFTER:	10/19
CHECKED BY:	
APPROVED:	
CHIEF ENGR.:	

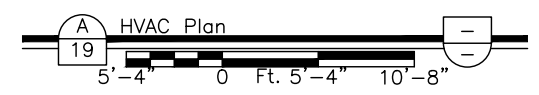
DATE:	PROJECT NO.:	SHEET NO.:	OF 22
	W225ET-C5	18	



LOUVER, VENT AND HEATER SCHEDULE

ID	DESCRIPTION	SIZE	TYPE	NOTES	QUANTITY
①	POWERED WALL LOUVER	3'-0"x3'-0"	WL-1	SECTION 10200	1
②	POWERED WALL LOUVER WITH EXHAUST FAN	3'-0"x3'-0"	WL-1	SECTION 10200	1
③	RIDGE VENT	-	RV-1	SECTION 13121	3
④	INFRARED HEATER	-	IR-1	SECTION 15750	3
⑤	BATHROOM EXHAUST FAN	-	EF-1	SECTION 07726	2
⑥	UNIT HEATER	-	UH-1	SECTION 15500	1
⑦	WALL LOUVER	1'-0"x1'-0"	WL-2	SECTION 10200	1

- MECHANICAL LEGEND**
- CEILING MOUNTED DIFFUSER
 - CEILING MOUNTED RETURN
 - CEILING MOUNTED RETURN W/FILTER
 - DAMPER WITH CONCEALED CONTROLLER
 - BATHROOM VENTILATION FAN
 - LPG BOX HEATER



6"x12" GRATE VENT
1" BELOW CEILING

6"x12" GRATE VENT
1" ABOVE FINISHED FLOOR

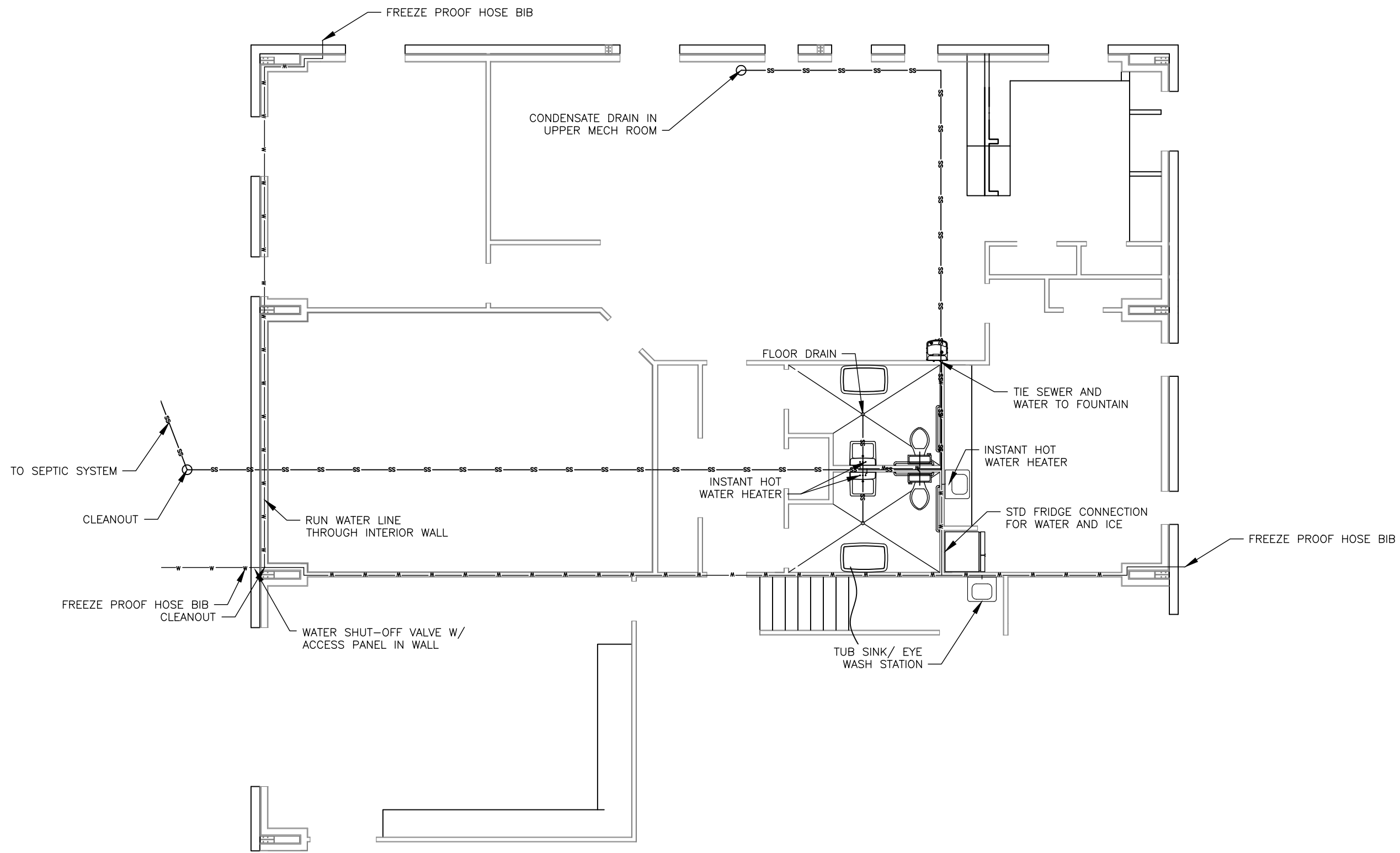


REVISIONS:	DATE	BY

DESIGNER:	10/19
DRAFTER:	10/19
CHECKED BY:	
APPROVED:	
CHIEF ENGR.:	

DATE:	
PROJECT NO.:	W25E1-C5
SHEET NO.:	19
OF 22	

▲ Addendum No. 1 (2/14/20)



A
20 Plumbing Plan
5'-4" 0 5'-4" 10'-8"

2019-20
MAINTENANCE BUILDING

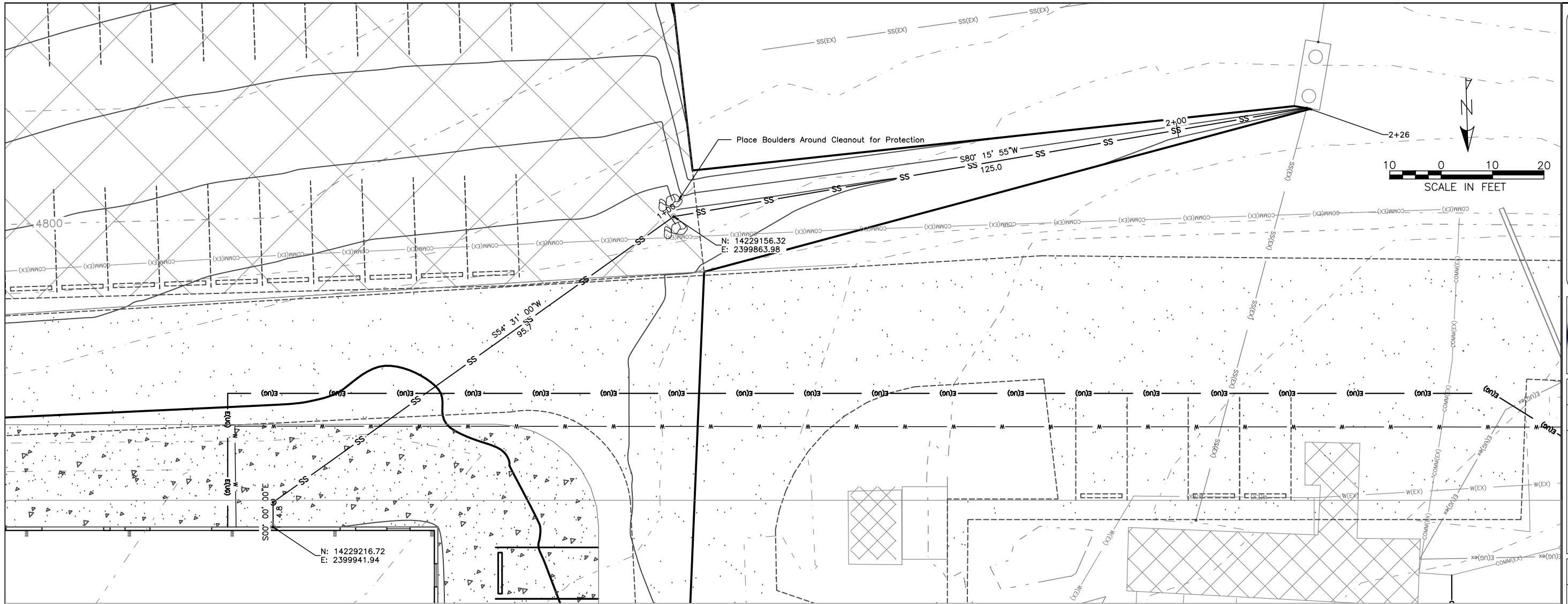


REVISIONS:	DATE	BY

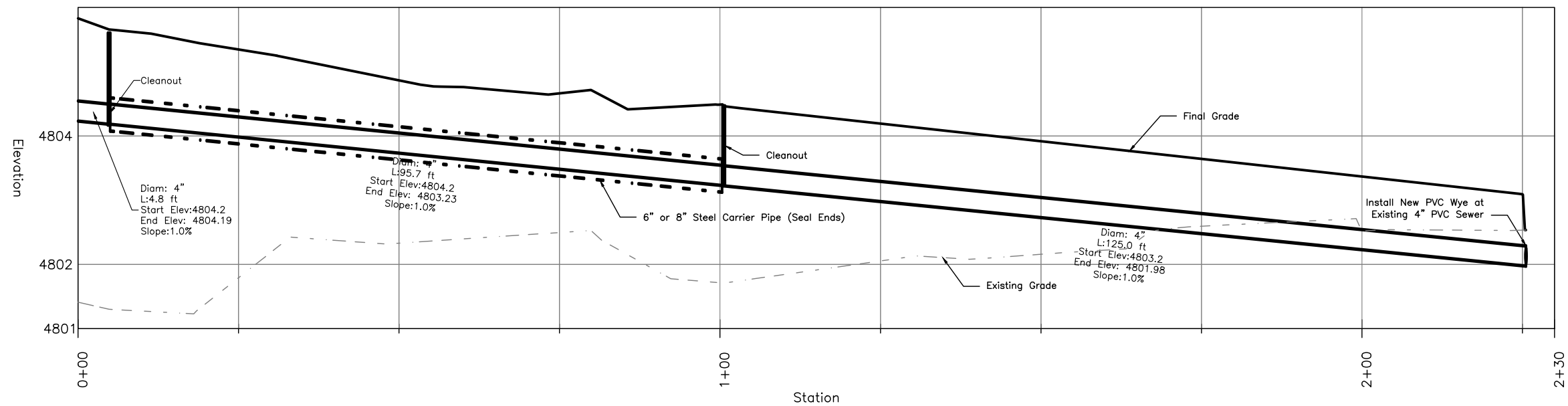
DESIGNER:	10/19
DRAFTER:	10/19
CHECKED BY:	
APPROVED:	
CHIEF ENGR.:	

DATE:	
PROJECT NO.:	W2251-C5
SHEET NO.:	20
OF 22	

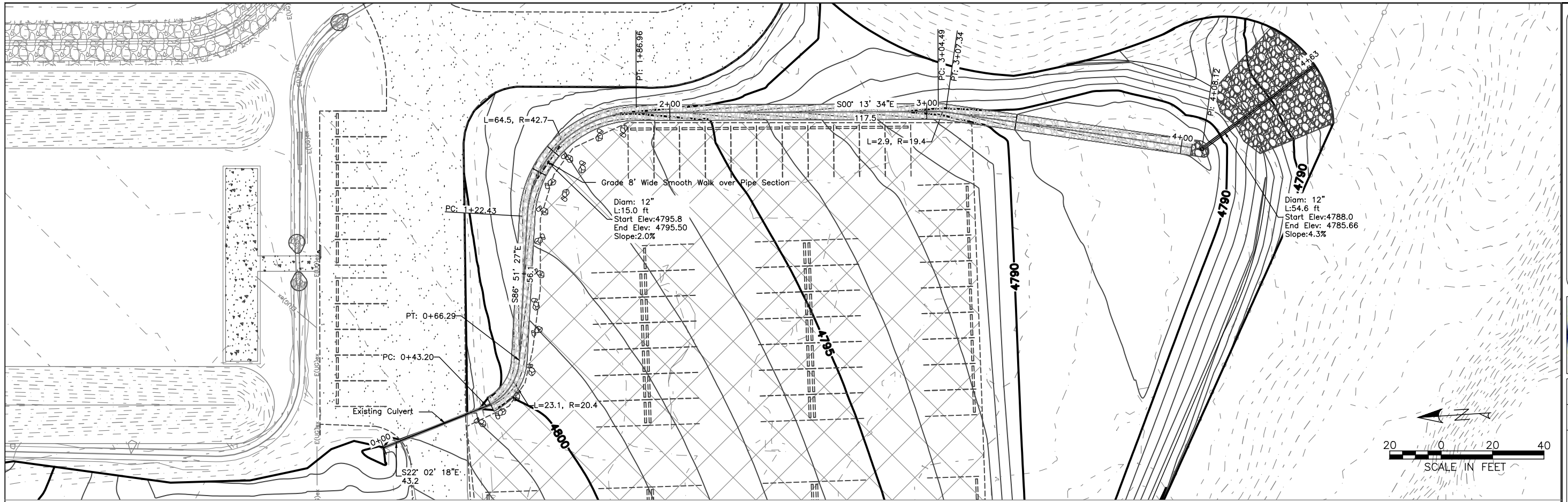
CAMEO SHOOTING RANGE
PLUMBING PLAN



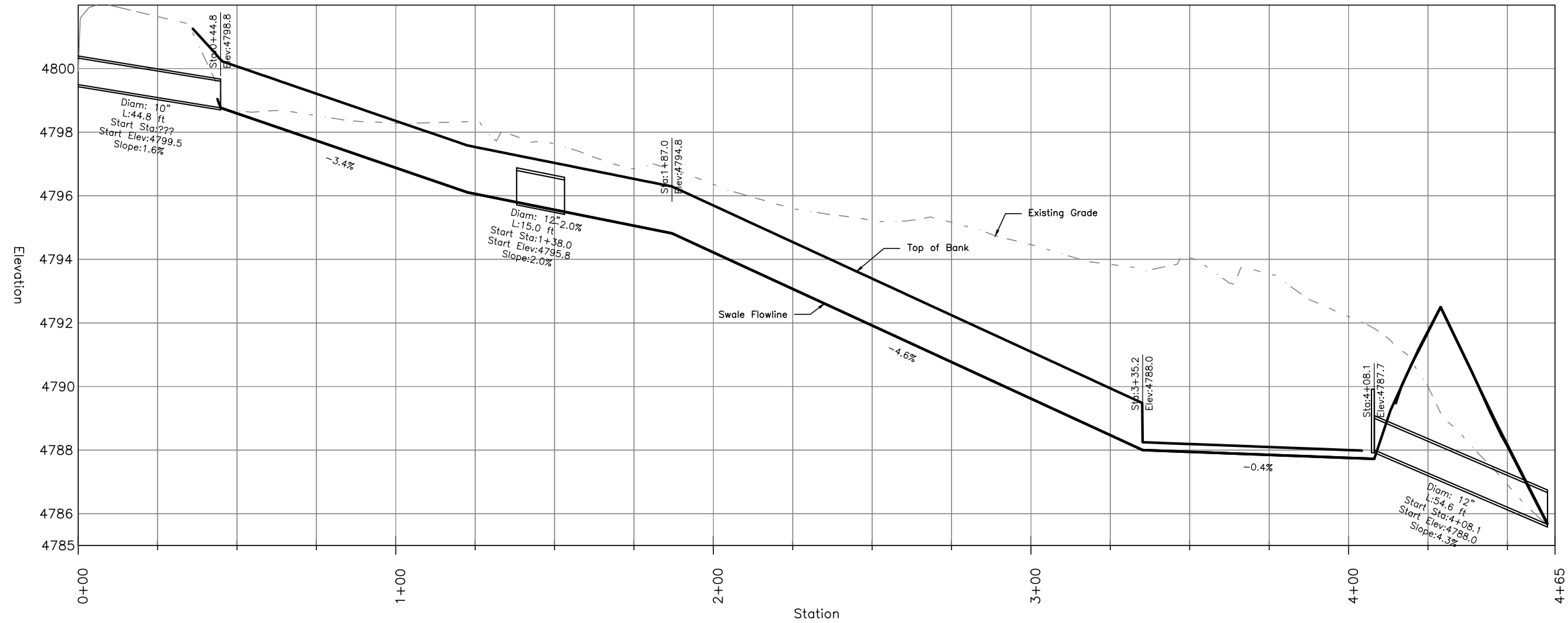
Sanitary Sewer Profile




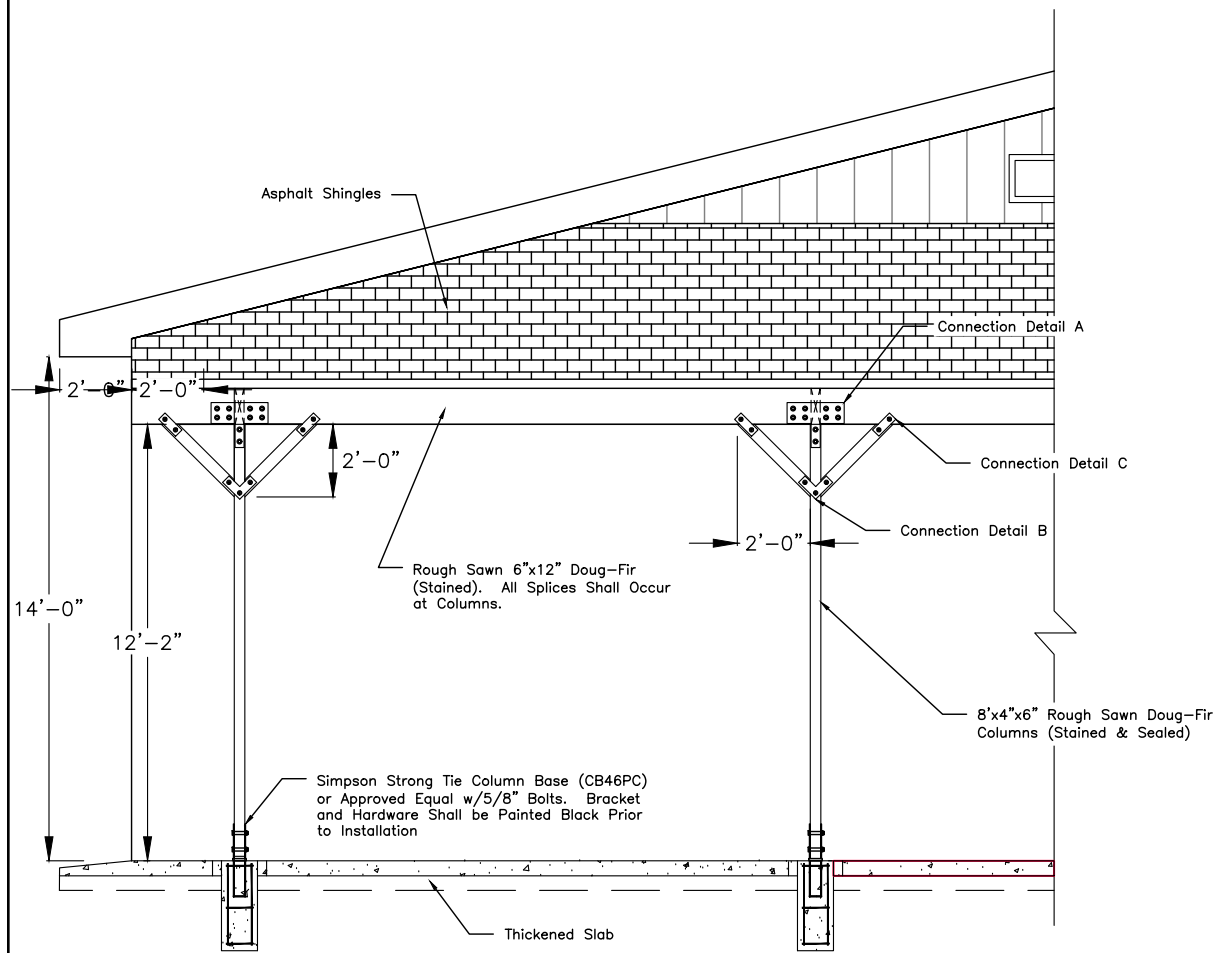
2019-20		MAINTENANCE BUILDING	
DESIGNER:	DATE:	BY:	
DRAFTER:	01/20		
CHECKED BY:			
APPROVED:			
CHIEF ENGR.:			
PROJECT NO.:			
SHEET NO.:	20		
			OF 21
CAMEO SHOOTING RANGE		SANITARY SEWER P&P	



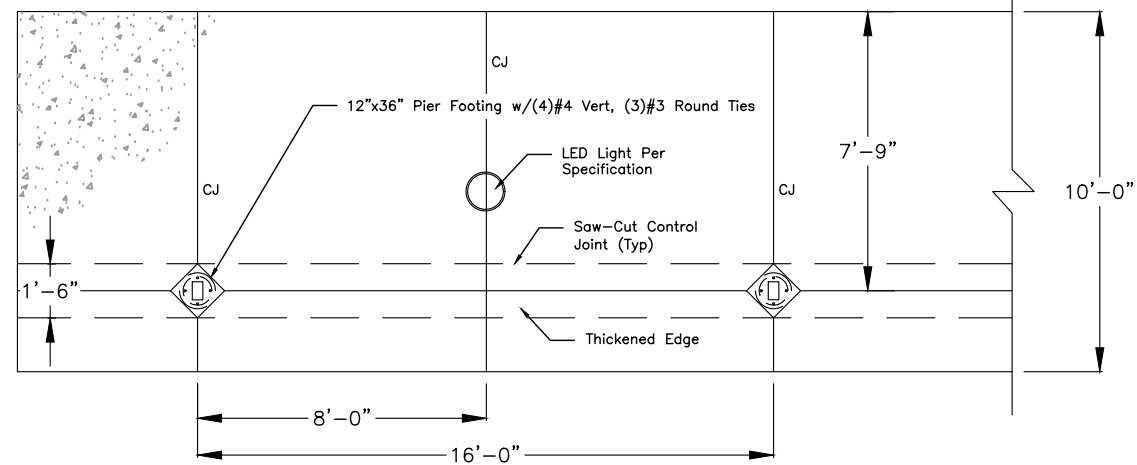
Parking Lot Swale Profile



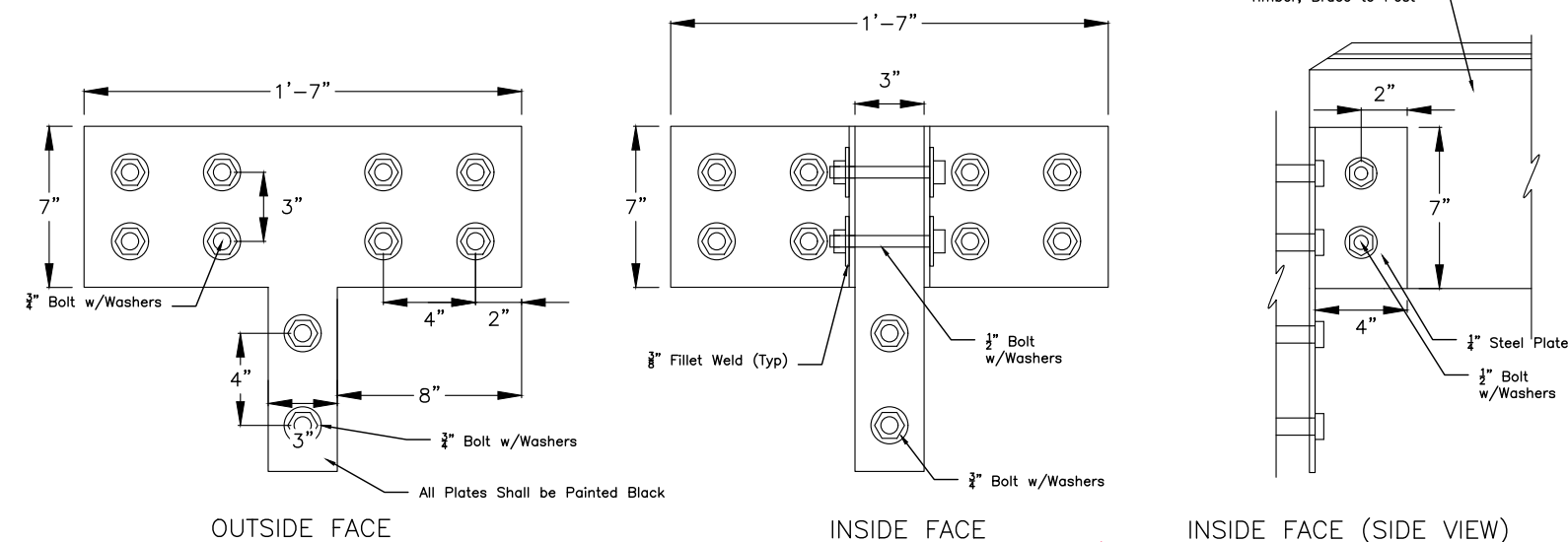
2019-20		MAINTENANCE BUILDING	
			
DESIGNER:	DATE:	CHECKED BY:	BY:
DRAFTER:	PROJECT NO.:	APPROVED:	DATE:
	NUMBER:		
	SHEET NO.:		
	21		
	OF 21		
CAMEO SHOOTING RANGE		PARKING LOT SWALE P&P	



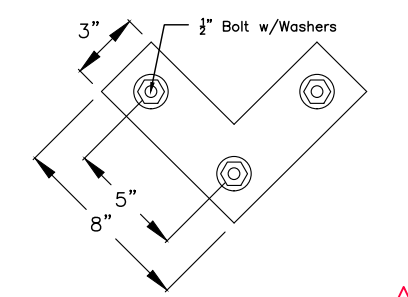
1 COVERED PORCH ELEVATION



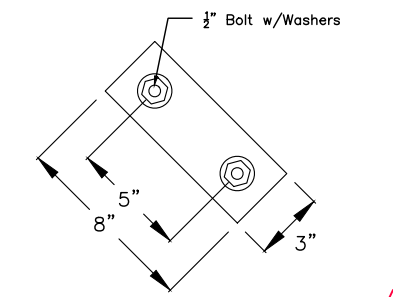
2 COVERED PORCH PLAN VIEW



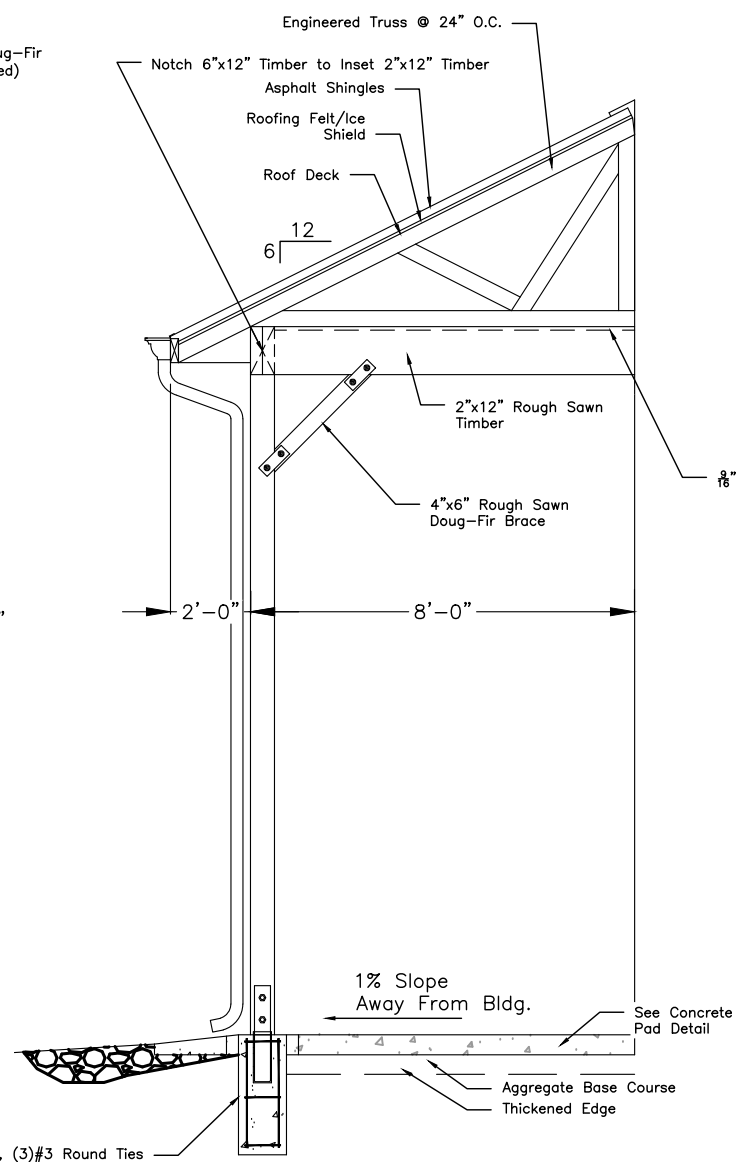
A CONNECTION DETAIL



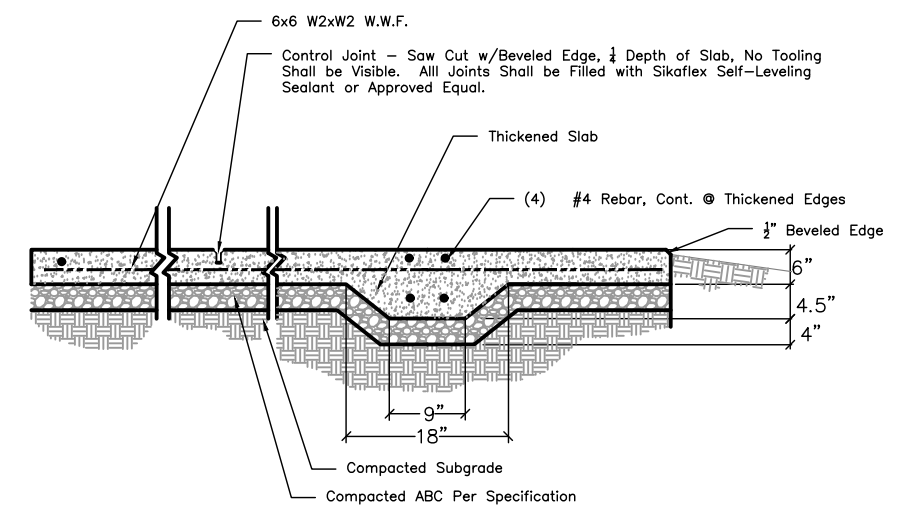
B CONNECTION DETAIL



C CONNECTION DETAIL



3 COVERED PORCH ELEVATION



D CONCRETE PAD DETAIL

Addendum No. 1 (2/14/20)

2019-20		MAINTENANCE BUILDING	
DESIGNER:	DRAFTER:	CHECKED BY:	APPROVED:
DATE:	PROJECT NO. W2251-C5	SHEET NO. 23	OF 22
CAMEO SHOOTING RANGE		COVERED PORCH DETAILS	