

**LIGHTING - FLOOR PLAN**  
 SCALE: 1/4"=1'-0"  
 NORTH



**FEATURES & SPECIFICATIONS**

**INTERIOR USE** — Typical applications include corridors, lobbies, conference rooms and private offices.

**CONSTRUCTION** — Galvanized steel mounting/plaster frame; galvanized steel junction box with bottom-hinged access covers and spring latches. Reflectors are retained by torsion springs. Vertically adjustable mounting brackets with commercial bar hangers provide 3-1/2" total adjustment. Two combinations 1/2" x 3/4" and four 1/2" knockouts for straight-through conduit run. Capacity: 8 #14, 4 #16, No. 12 AWG conductors, rated for 90°C. Accommodates 12"-24" joist spacing.

Passive cooling thermal management for 23°C standard; high ambient (40°C) option available. Light engine and drivers are accessible from above or below ceiling.

Max ceiling thickness 1-1/2".

**OPTICS** — LEDs are binned to a 3-step SDCM; 80 CRI minimum, 90 CRI optional. LED light source concealed with diffusing optical lens.

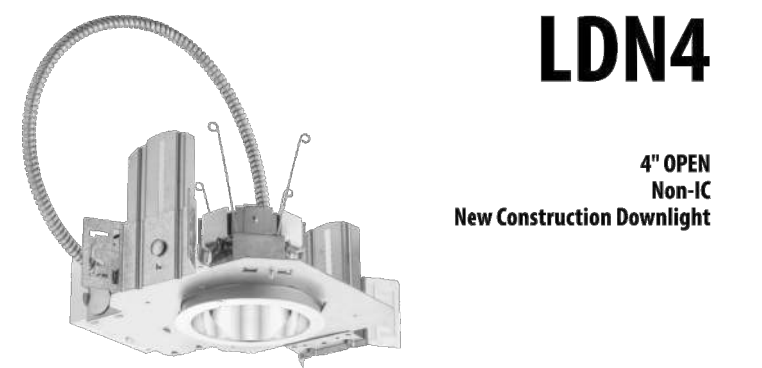
General illumination lighting with 1.0 S/NH and 55° cutoff to source and source image. Self-designed anodized reflectors in specular, semi-specular, or matte diffuse finishes. Also available in white and black painted reflectors.

**ELECTRICAL** — Multi-volt (120-277V, 50/60Hz) 0-10V dimming drivers mounted to junction box, 10% or 1% minimum dimming level available. 0-10V dimming fixture requires two (2) additional low-voltage wires to be pulled. 70% lumen maintenance at 60,000 hours.

**LISTINGS** — Certified to US and Canadian safety standards. Wet location standard (covered ceiling). IP55 rated. NEMA 310M certified product.

**WARRANTY** — 5-year limited warranty. Complete warranty terms located at: [www.aclitybrand.com/CustomerResources/Terms\\_and\\_Conditions.aspx](http://www.aclitybrand.com/CustomerResources/Terms_and_Conditions.aspx)

Note: Actual performance may differ as a result of end-user environment and application. All values are design or typical values, measured under laboratory conditions at 25°C. Specifications subject to change without notice.



ORDERING INFORMATION: Lead times will vary depending on options selected. Consult with your sales representative. Example: LDN4 35/15 104AR LSS MVOLT EZ1

Series	Color temperature	Lumens*	Aperture/Trim Color	Finish	Voltage
LDN4	27K 2700K	05 500 lumens	LDN4 Downlight	4R Clear	MVOLT Multi-volt
	30K 3000K	10 1000 lumens	LDN4 Wallwash	WR White	120 120V
	35K 3500K	15 1500 lumens		BR Black	277 277V
	50K 5000K	25 2500 lumens			347 347V
	50K 5000K	30 3000 lumens			

Driver	Options
GZ10 0-10V driver dims to 10%	SP <sup>1</sup> Single fuse
GZ1 0-10V driver dims to 1%	TRW <sup>2</sup> White painted flange
GZ1D 0-10V dimLED driver with smooth and flicker-free deep dimming performance down to 10%	TRW <sup>2</sup> Black painted flange
EZ1 0-10V dimLED driver with smooth and flicker-free deep dimming performance down to 1%	EL <sup>3</sup> Emergency battery pack with integral test switch, 10W Constant Power, Not Certified in CA Title 20 MAEDBS
	EL <sup>3</sup> Emergency battery pack with remote test switch, 10W Constant Power, Not Certified in CA Title 20 MAEDBS
	ELSD <sup>4</sup> Emergency battery pack with self-diagnostic, 10W Constant Power, integral test switch, Not Certified in CA Title 20 MAEDBS
	ELSDP <sup>4</sup> Emergency battery pack with self-diagnostic, 10W Constant Power, remote test switch, Not Certified in CA Title 20 MAEDBS
	E10WCR <sup>5</sup> Emergency battery pack, 10W Constant Power with integral test switch, Certified in CA Title 20 MAEDBS
	E10WCR <sup>5</sup> Emergency battery pack, 10W Constant Power with remote test switch, Certified in CA Title 20 MAEDBS
NPP100ER <sup>6</sup>	nLight <sup>TM</sup> network power/day pack with 0-10V dimming for non-dimLED drivers (GZ10, GZ1, EZ1)
NPP100ER <sup>6</sup>	nLight <sup>TM</sup> network power/day pack with 0-10V dimming for non-dimLED drivers (GZ10, GZ1, EZ1). ER controls features on emergency circuit.

Options	Options
NBS <sup>7</sup> nLight <sup>TM</sup> Lumen Compensation	NPSOLEZ <sup>8</sup> nLight <sup>TM</sup> dimming pack controls 0-10V dimLED drivers (EZ10, EZ1)
NPSOLEZ <sup>8</sup> nLight <sup>TM</sup> dimming pack controls 0-10V dimLED drivers (EZ10, EZ1)	NPSOLEZER <sup>8</sup> nLight <sup>TM</sup> dimming pack controls 0-10V dimLED drivers (EZ10, EZ1). ER controls features on emergency circuit.
HAD <sup>9</sup> High ambient option (40°C)	CP <sup>10</sup> Chicago Plenum
REL <sup>11</sup> REL <sup>TM</sup> ready luminaire connector enables a simple and consistent factory installed option across all ARI luminaire brands. Refer to RRI, for complete nomenclature. Available only in RRI, RRI-L, RRI-AL, and RRI-CES.	NLTAREZ <sup>12</sup> nLight <sup>TM</sup> Air enabled
NLTAREZ <sup>12</sup> nLight <sup>TM</sup> Air enabled	NLTAREZER <sup>12</sup> nLight <sup>TM</sup> Air Dimming Pack Wireless Controls. Controls features on emergency circuit.
USPOM 90CRI	USPOM 90CRI

Notes:

- Overall height varies based on luminaire package; refer to dimensional chart on page 5.
- Not available with finishes.
- Not available with emergency options.
- Must specify voltage: 120V or 277V.
- 12.5" of plenum depth or trap access required for battery pack maintenance.
- Available with clear (AR) reflector only.
- Specify voltage: 48V for use with generator supply EM power. Will require an emergency hot lead and normal hot lead.
- Feature begins at 80% light level. Must be specified with NPSOLEZ or NPSOLEZER. ER only available with EZ10 and EZ1 drivers.
- Specify voltage: 120V or 277V.
- Not available with CP, NPSOLEZ, NPSOLEZER, NPP100, NPP100ER or NBS options.
- Feature height is 5-11/16" for all luminaire packages with 360.
- Must specify voltage for 3000lm. Not available with emergency battery pack option.
- NLTAREZ and NLTAREZER not recommended for recessed ceiling installations.
- Feature height is 5-11/16" for all luminaire packages with 360.
- Must specify voltage for 3000lm. Not available with emergency battery pack option.

**ELECTRICAL LEGEND**

- NOTE:
- SYMBOLS SHOWN ARE STANDARD. VARIATION AND/OR COMBINATIONS MAY BE USED ON THE PLANS SUCH AS:
    - LOWER CASE LETTER = SWITCHING DESIGNATION
    - SINGLE NUMBER = CIRCUIT NO.
    - 30A-2P = 30 AMPERE-TWO POLE
  - THIS LIST SHOWS STANDARD SYMBOLS AND ALL MAY NOT APPEAR ON THE PROJECT DRAWINGS; HOWEVER, WHEREVER THE SYMBOL ON THE PROJECT DRAWINGS OCCUR, THE ITEM SHALL BE PROVIDED AND INSTALLED.
- BRANCH CIRCUIT PANELBOARD
  - TELEPHONE TERMINAL BOARD
  - MOTOR
  - FUSED SAFETY SWITCH / DISCONNECT
  - COMBINATION MOTOR STARTER
  - CONTACTOR
  - CIRCUITRY HOMERUN: PANEL LA - CIR. #7
  - CONDUIT OR WIRE CONCEALED IN WALL/CLG.
  - CONDUIT OR WIRE UNDERFLOOR/UNDERGROUND.
  - CEILING JUNCTION BOX - SURFACE/FLUSH
  - WALL JUNCTION BOX - SURFACE/FLUSH
  - DUPLEX RECEPTACLE
  - CEILING MOUNTED DUPLEX RECEPTACLE
  - FOURPLEX RECEPTACLE
  - COMBINATION DATA/POWER FLOOR BOX
  - THERMOSTAT
  - TELEPHONE OUTLET
  - COMPUTER-DATA
  - COMBINATION DATA/TELEPHONE
  - TELEVISION OUTLET
  - SINGLE POLE SWITCH
  - MANUAL ON, AUTO OFF DIMMER SWITCH 0-10V
  - THREE-WAY SWITCH
  - FOUR-WAY SWITCH
  - DIMMER SWITCH
  - MANUAL MOTOR STARTER
  - FLUORESCENT FIXTURE TYPE A
  - WALL BRACKET FLUORESCENT FIXTURE
  - OPEN STRIP FLUORESCENT FIXTURE
  - SURFACE CEILING INCANDESCENT OR H.I.D. FIXTURE
  - WALL MOUNTED INCANDESCENT OR H.I.D. FIXTURE
  - RECESSED CEILING DOWN LIGHT
  - DOUBLE FACE EXIT SIGN, WALL AND CEILING MOUNTED
  - SINGLE FACE EXIT SIGN, WALL AND CEILING MOUNTED



Architecture  
Interior Design  
Project Management

622 Road Avenue  
Grand Junction, CO 81501  
970-242-1058 office

BLTYHE GROUP + co.

Bighorn  
Consulting  
Engineers, Inc.  
Mechanical & Electrical Engineers  
386 Indian Road  
Grand Junction, CO 81501  
phone: 970-241-8709,

CDOT OFFICE RENOVATION

222 SOUTH 6TH STREET  
GRAND JUNCTION, CO 81503

LIGHTING - FLOOR PLAN

FOR CONSTRUCTION



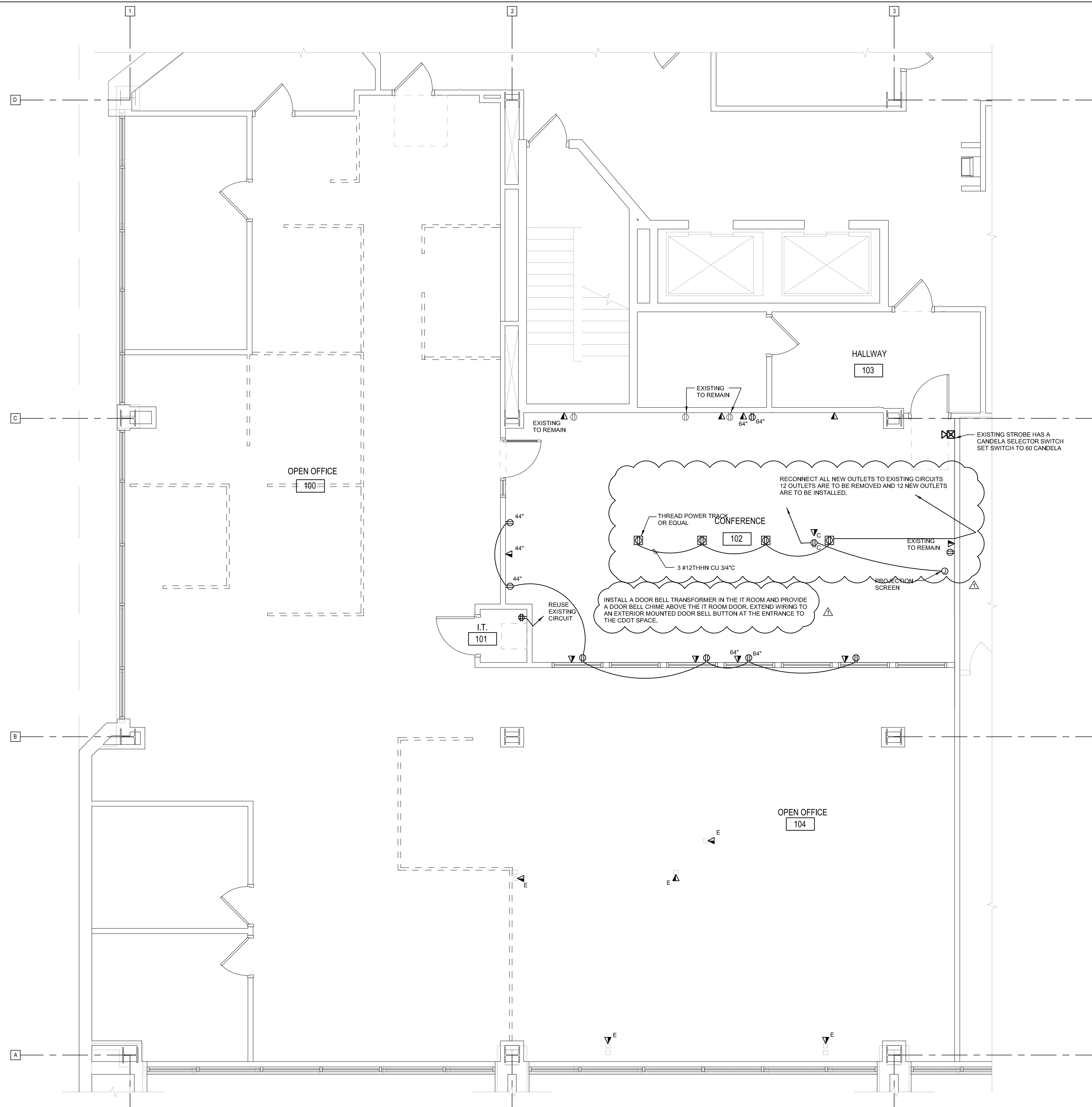
REV. DESC. DATE:

DATE: 11/27/19

PROJECT #: 19-130

SHEET #:

**E1-1**



**ELECTRICAL - FLOOR PLAN**  
 SCALE: 1/4"=1'-0"  
 NORTH

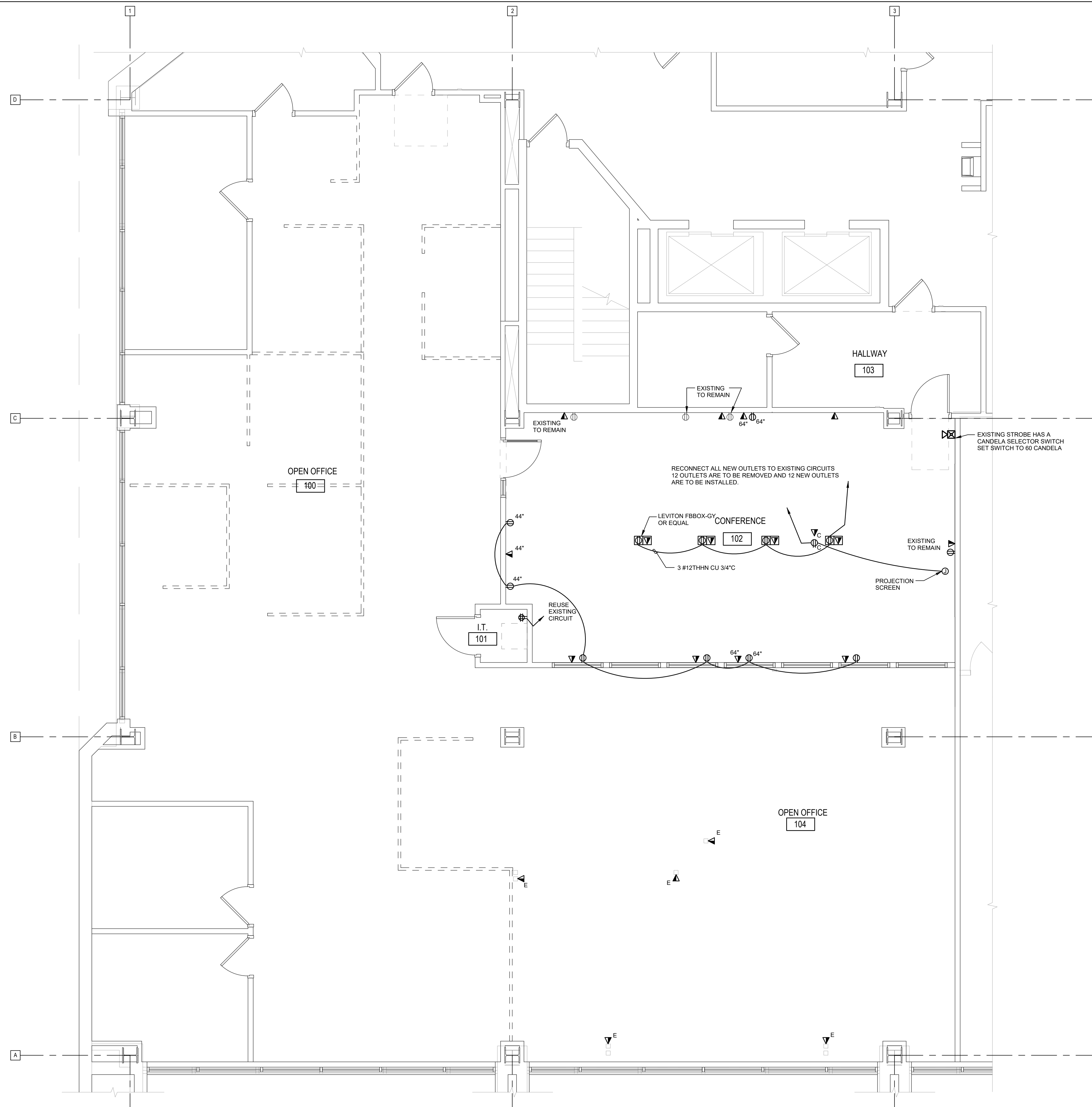


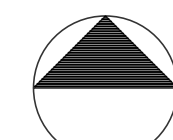
REV.	DESC.	DATE:
1	ADD 01	02/14/20

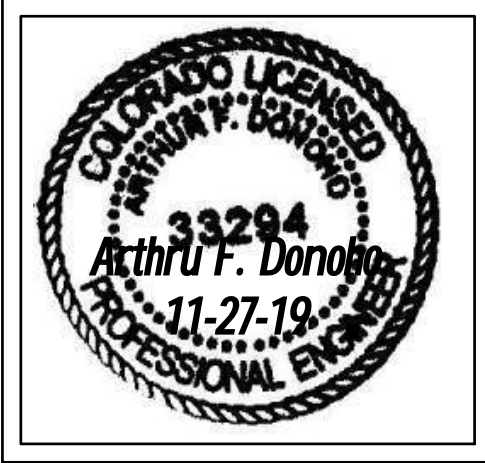
DATE: 12/04/19

PROJECT #: 19-130

SHEET #:




**ELECTRICAL - FLOOR PLAN**  
 SCALE: 1/4"=1'-0"  
 NORTH



REV.    DESC.    DATE:

DATE: 11/27/19

PROJECT #: 19-130

SHEET #:

