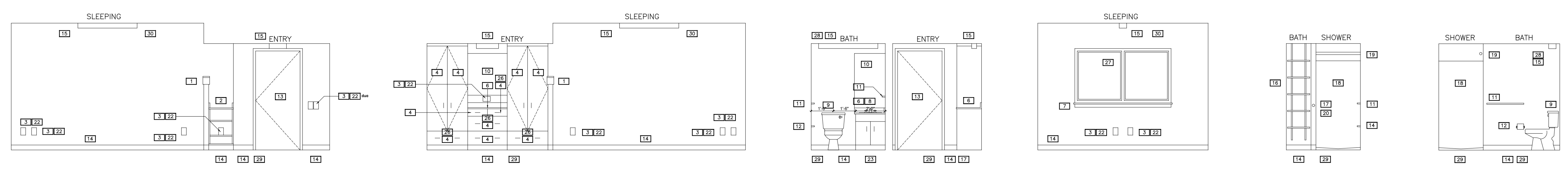
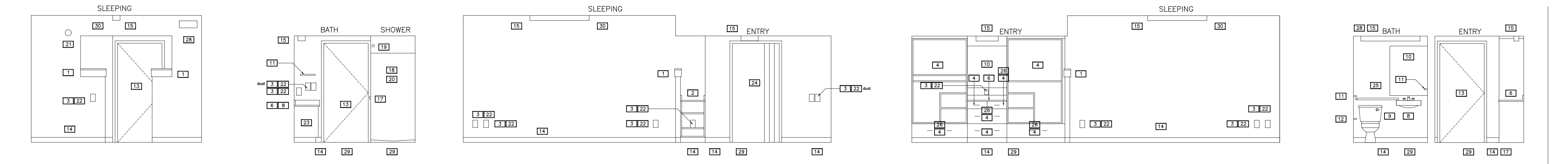


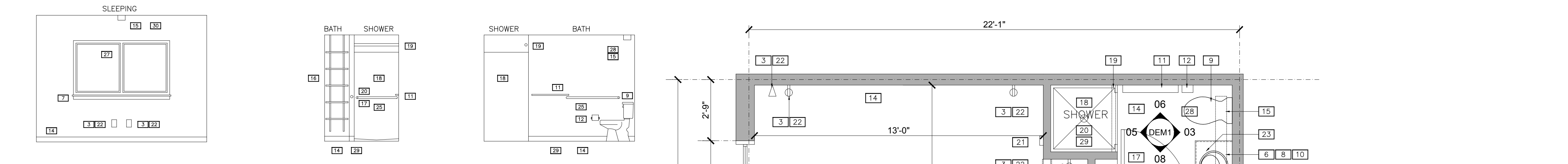
First Floor South Wing



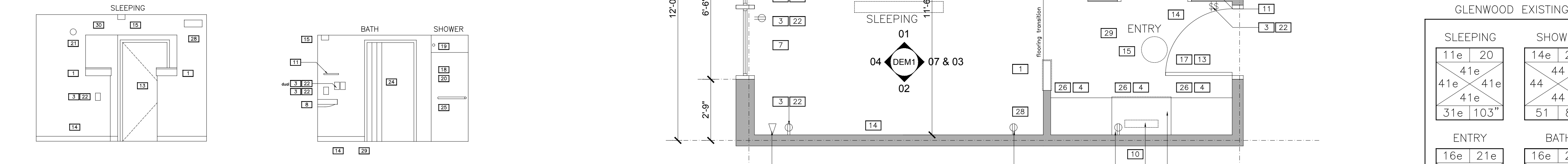
01 Interior Elev DEM1 scale: 1/4" = 1'-0"
02 Interior Elev DEM1 scale: 1/4" = 1'-0"
03 Interior Elev DEM1 scale: 1/4" = 1'-0"
04 Interior Elev DEM1 scale: 1/4" = 1'-0"
05 Interior Elev DEM1 scale: 1/4" = 1'-0"
06 Interior Elev DEM1 scale: 1/4" = 1'-0"



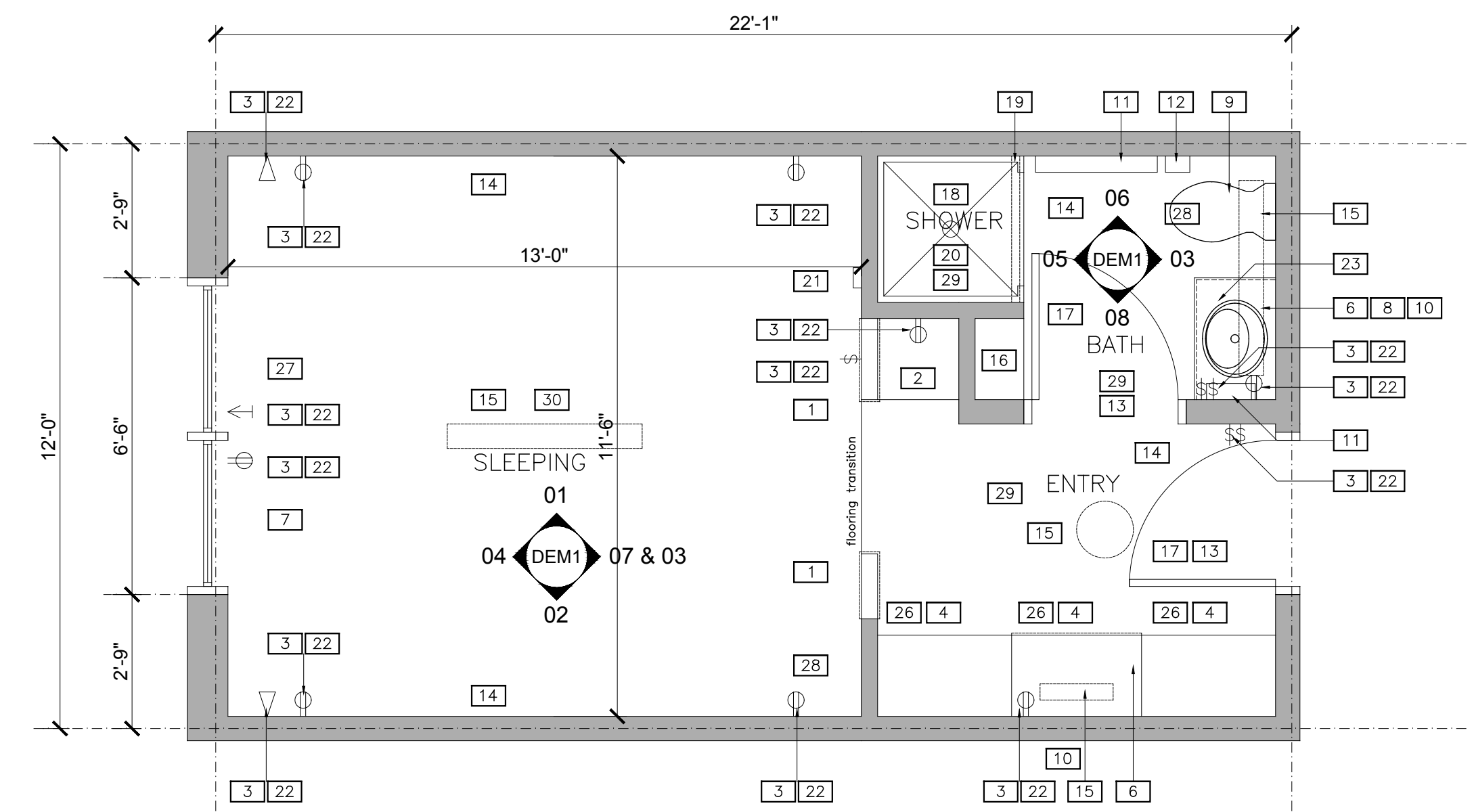
07 Interior Elev DEM1 scale: 1/4" = 1'-0"
08 Interior Elev DEM1 scale: 1/4" = 1'-0"
09 Interior Elev DEM1 scale: 1/4" = 1'-0"
10 Interior Elev DEM1 scale: 1/4" = 1'-0"
11 Interior Elev DEM1 scale: 1/4" = 1'-0"



12 Interior Elev DEM1 scale: 1/4" = 1'-0"
13 Interior Elev DEM1 scale: 1/4" = 1'-0"
14 Interior Elev DEM1 scale: 1/4" = 1'-0"



15 Interior Elev DEM1 scale: 1/4" = 1'-0"
16 Interior Elev DEM1 scale: 1/4" = 1'-0"



17 Standard Demolition Plan DEM1 scale: 3/8" = 1'-0"

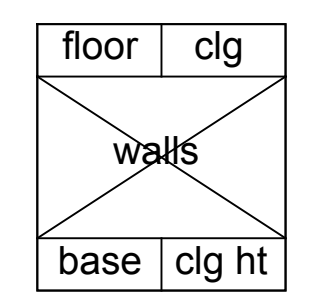
TAG DEMOLITION NOTES

1	Remove wall cap and trim
2	Remove entire shelving system
3	Remove all electrical device wall plates
4	Remove existing cabinet doors and drawers (exposed face panels only at drawers)
5	Not Used
6	Remove countertop and backsplash
7	Remove window sill and trim
8	Remove existing sink and faucet
9	Remove existing toilet
10	Remove mirror
11	Remove wall mounted towel bars/ring see note 3
12	Remove toilet paper holder see note 3
13	Remove & retain existing doors see note 4
14	Remove wall base
15	Remove existing light fixtures
16	Remove existing shelves, brackets and standards
17	Remove wall & floor mounted door stops
18	Remove existing shower walls see note 1
19	Remove shower rod
20	Remove existing shower faucet & valve
21	Protect existing detector
22	Remove existing wall electric boxes
23	Remove existing vanity cabinet
24	Remove accordion style door and frame
25	Remove existing grab bars see note 3
26	Remove existing drawer slides
27	Remove & retain existing window shades
28	Remove & retain existing HVAC grill
29	Remove existing flooring
30	Remove existing ceiling texture see note 2

- Note 1: At shower locations: remove existing walls to size of new shower enclosure. Install 1/2" cementitious board on all sides. Apply RedGuard water-proofing to cementitious board. Install thinset, ceramic tile, and grout per Specifications
- Note 2: At Sleeping room ceiling: Wet and scrape off popcorn texture to concrete substrate. Caulk and seal at wall corner and ceiling joints. Prime and paint ceiling.
- Note 3: Remove drywall in areas to receive new wall mounted items such that blocking can be installed for secure mounting, replace drywall, prep for prime and paint.
- Note 4: Doors to be refinished as directed in Specification Section 09910
- Note 5: Remove any existing wall corner guards (new installed by Owner after renovation)

GLENWOOD EXISTING

SLEEPING		SHOWER	
11e 20	14e 21e	41e 41e	44 44
41e 41e	41e 41e	44 -	44
31e 103"	51 89"		
ENTRY		BATH	
16e 21e	16e 21e	41e 41e	41e 41e
41e 41e	41e 41e	31e 89"	31e 89"



TAG Interior Finishes Legend

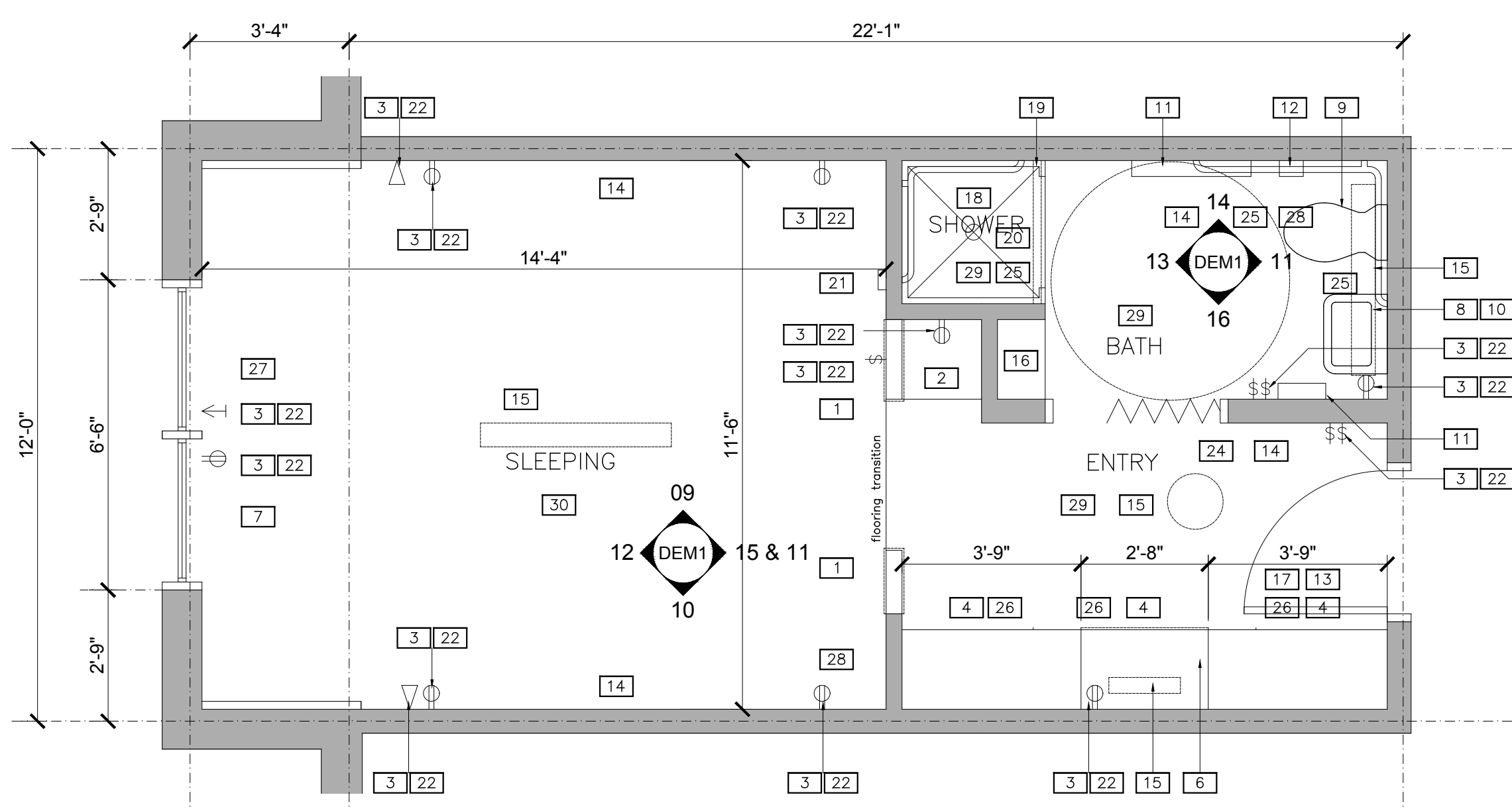
FLOOR	DESCRIPTION	TAG
11	wood laminate flooring	
12	carpet	09680
13	12 x 12 floor tile	09300
14	fiberglass base	
15	12 x 12 floor tile over prepped base	09260, 09300
16	sheet vinyl	
CEILING	DESCRIPTION	TAG
20	painted heavy texture	048100
21	gypsum board, painted	09910
22	prepped smooth ceiling, caulked seams, painted	09910
SE	DESCRIPTION	TAG
31	4" resilient base	09653
WALLS	DESCRIPTION	TAG
41	gypsum board or CMU, painted	09910
42	prepped gypsum board or CMU, painted	09260, 09910
43	prepped wonderboard, 12 x 24 staggered, vertical	09260, 09300
44	fiberglass shell	
51	none	

e= existing finish condition
n= new finish condition

Code Information

Project Name:	Colorado Mountain College Sopris Hall Remodel
Address:	3000 County Road 114, Glenwood Springs, CO 81601
Governing Code:	2015 IBC, IECC, IEBC, IMC & 2017 NEC (Chapter 5 IEBC)
Alteration Level (exist. bldg):	Level 1
Occupancy Classification:	R2 (ADA Rooms)
Existing Construction Type:	VB
Existing Building Area:	48,800 SF
Area of Remodel:	Approx 8,000
Fire Protection/Sprinkler System:	Yes-Existing
Number of Floors:	3 (remodel at Main level only)
Handicap Accessible:	Yes

- Notes to General Contractor:
- Centerline of ADA toilet shall be adjusted to comply with ANSI 117.1/1103.11.2.4- this may require a change in the width of the bathroom vanity.
 - Contractor shall assess and account for condition of plumbing fixtures, especially those in ADA units, where provision of immediate 90 degree elbows are required for clearance.
 - Contractor to provide caulking along renovated ceiling perimeter and at ceiling seams prior to painting.
 - Contractor to provide mixing valves at showers.
 - Contractor to identify location of units and account for drainage connection of condensation line from ceiling unit utilizing bath vanity drain.



18 ADA Unit Demolition Plan DEM1 scale: 3/8" = 1'-0"

TAG	RENOVATION NOTES
C 1	Duplex/ Switch wallplate Manufacturer: Leviton Model: Decora 80401-W (single) Model: Decora 80409-W (dual) Color: White Remarks: Adjust outlet height in bathroom to accommodate new cabinet and countertop height, (if needed)
C 2	Light Switch Manufacturer: Leviton Model: Decora 5601-2W Color: White
S 3	Resilient Wall Base -see 09653 Manufacturer: Johnsonite Type: 4" TP group 1 cove Color: Espresso 132
4	Existing floor surface to remain
S 5	New cabinet doors and drawer faces: (to match material, size & thickness as ones removed) Plastic Laminate- see 06411 Manufacturer: Wilsonart Color: Versailles 7923K-07 3 mm edging to match p. lam. Hardware information: Contact: ATGStores.com Product line: Jamison Collection Model: P130SN (30" vertical mount) locate at tall cabinet doors Model: P127SN (27" horizontal mount) located at large drawers Model: P106S N (6" horizontal mount) located at small drawers
S 6	Floor tile- See 09300 Prep existing floor per manufacturers recommendations Manufacturer: Daltile Product line: Exquisite Model: EQW10 Ivory Size: 12" x 12" (checkerboard) Grout Manufacturer: Mapei Color: #386 Oyster Gray Material transition strip Manufacturer: Schluter
S 7	Solid surface countertop/sill- see 06415 Manufacturer: Avonite Product: Palermo (F1-9144) Thickness: 1/2" Backsplash height to be 4" Apron trim to be 2"
8	Shower curtain rod
S 9	New shelves -see 06411 same material, width and depth as those removed. Provide 6 new shelves Plastic Laminate information: Manufacturer: Wilsonart Color: Versailles 7923K-07 Hardware information: Manufacturer: Knape and Vogt Standard #: 80 ALM ANO 72 Bracket #: 180 ANO xx (provide correct bracket per shelf depth)
S 10	Mirror - see 10820 Manufacturer: see spec Remarks: Replace Bath & commode with same size and style
C 11	Towel Ring Manufacturer: Delta Product line: Compel Product #: 77146-SS blocking & secured w/ heavy duty anchor
C 12	Toilet Paper Holder Manufacturer: Delta Product line: Compel Product #: 77250-SS blocking & secured w/ heavy duty anchor
C 13	Towel Bar Manufacturer: Delta Product line: Compel Product #: 77118-SS blocking & secured w/ heavy duty anchor
C 14	Door stop Manufacturer: Rockwood Door Hinge Pin at Entry: 528 HD NP Wall Stop at Bath: RM861 626

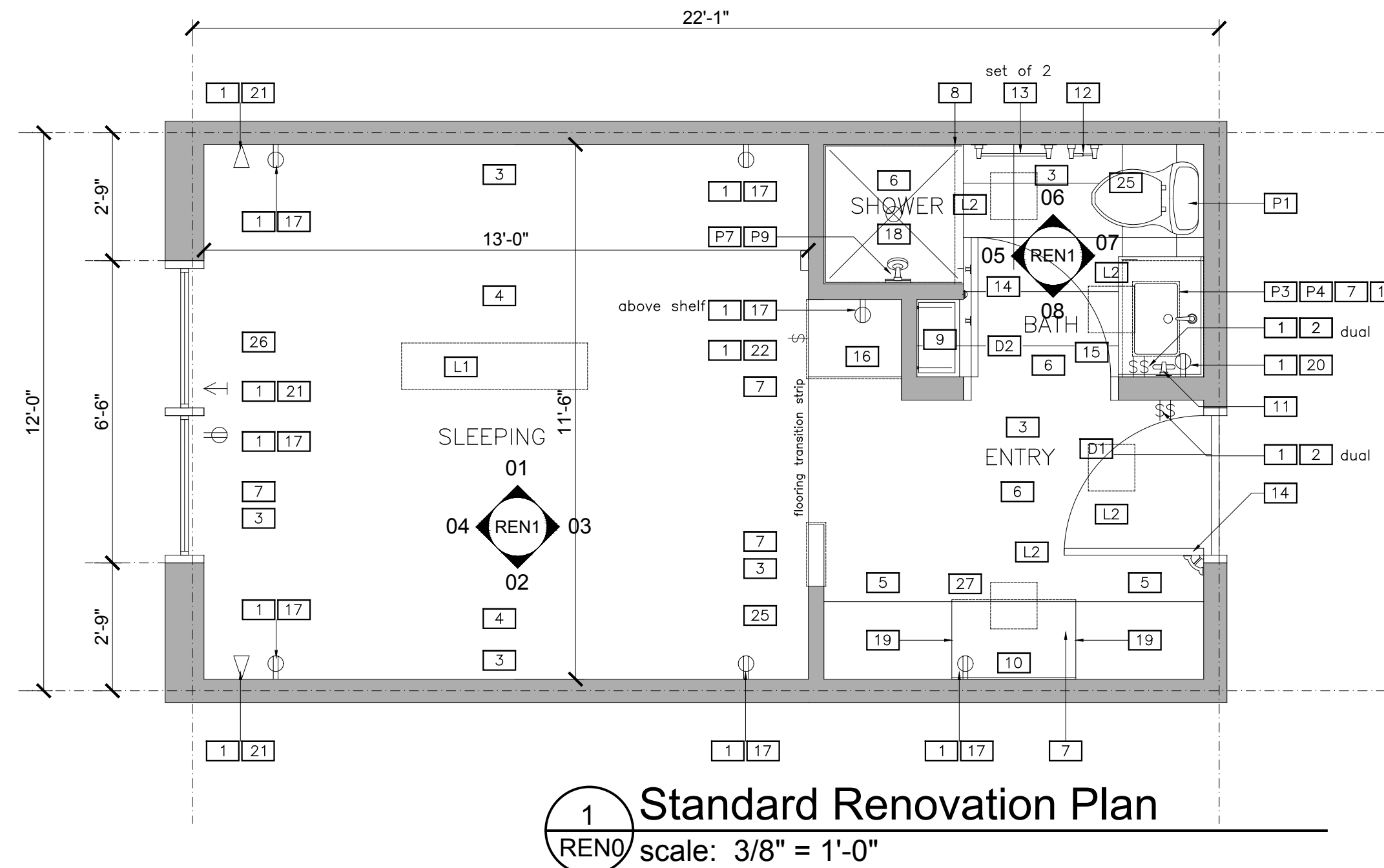
TAG	RENOVATION NOTES
S 15	New vanity cabinet to match -see 06411 material and depth same as removed. Height to be 36", (32" at ADA unit) Laminate information: Manufacturer: Wilsonart Color: Versailles 7923K-07 Hardware information: Location: ATGStores.com Product line: Jamison Collection Model: P110SN Length: 10"
S 16	Provide Cubby Shelving -see 06411 housing and adjustable shelves Laminate information: Manufacturer: Wilsonart Color: Versailles 7923K-07
C 17	Outlet / USB charger Manufacturer: Leviton Model: T5632-W Color: White
S 18	Shower wall Tile- see 09300 & 09620 Remove existing wall board and replace with wonderboard and red guard Manufacturer: Daltile Product line: Exquisite Model: EQW10 Ivory Size: 12" x 24"; vertical, 1/3 stagger Grout Manufacturer: Mapei Color: #386 Oyster Gray Material transition strip Manufacturer: Johnsonite Type: Horiz. & outside crnr. terminations
S 19	Plastic Laminate Whiteboard 3mm On Wardrobe Sidewalls Formica #20949
C 20	Outlet GFI Manufacturer: Leviton Model: Decora GFNT2-PW Color: White
V 21	Data / Communication outlet Manufacturer: Leviton Type D:21-M41642-W Decora insert 21-E61110-RW6 CAT 6 port 21-T41108-RW5 telephone Type C:21-M41642-W Decora insert 21-E61110-RW6 CAT 6 port 21-C41084-FWF Cable TV
C 22	Light Switch Manufacturer: Leviton Model: Decora DSE06-10Z Type: Rocker with dimmer slider, white
23	Not Used
24	Not Used
25	Reconditioned exist. HVAC grill, paint white
26	Reconditioned window shade
S 27	Drawer slider hardware- see 06411
S 28	Grab bars & escutcheon trim- see10820
29	Not Used
S 30	ADA Shower Seat- see 10820
C L1	1 x 4 LED surface mount- see schedule
C L2	1 x 1 LED surface mount- see schedule
C P1	Toilet - See schedule
C P2	Toilet ADA- See schedule
C P3	Sink- See schedule
C P4	Sink Faucet- See schedule
C P5	Sink- ADA- See schedule
C P6	Sink Faucet- ADA See schedule
C P7	Shower Faucet- See schedule
C P8	Shower Accessory- ADA- See schedule
C P9	Shower Valve- See schedule
C D1	Entry Door- gel coat stain, match others provide kickplate, seal, door hinge pin
C D2	Bathroom Door- paint (match others) affix 2 robe hooks, Bath side
C D3	Bathroom Accordion Door- ADA

Product Identifier Tags:

- Owner Purchased or reused, Contractor Installed
- ⊗ Owner Purchased or reused, Owner Installed
- C Product Cut Sheet Provided in Specification Booklet
- S Refer to Specification Section
- V By Owner contracted Vendor, coordinate schedule

Jeff Johnson
Architectural PC
136 East Third Street
Rifle, CO 81650
970-625-0580
jjarch@prof.net
Copyright 2020

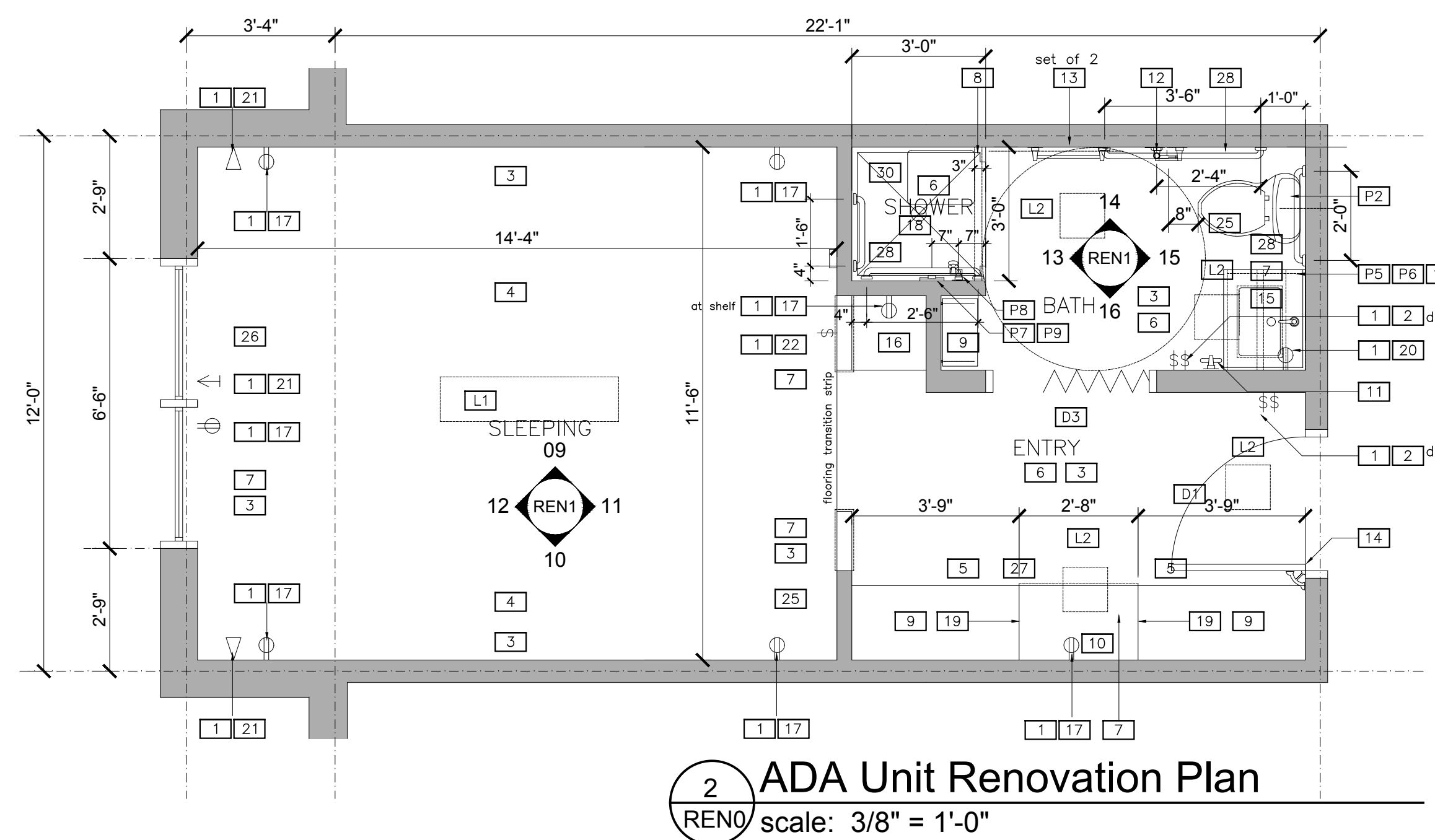
First Floor South Wing



GLENWOOD NEW

SLEEPING		SHOWER	
11e	22	15	21n
41n	41n	43	-
41n	41n	43	43
31n	103"	51	89"

ENTRY		BATH	
13n	21n	13n	21n
41n	41n	42	42
41n	41n	42	42
31n	89"	31n	89"



floor	clg
walls	
base	clg ht

TAG Interior Finishes Legend

TAG	Description	Code
11	wood laminate flooring	
12	carpet	09680
13	12 x 12 floor tile	09300
14	fiberglass base	
15	12 x 12 floor tile over prepped base	09260, 09300
16	sheet vinyl	
FLOOR		
20	painted heavy texture	048100
21	gypsum board, painted	09910
22	prepped smooth ceiling, caulked seams, painted	09910
CEILING		
31	4" resilient base	09653
BASE		
41	gypsum board or CMU, painted	09910
42	prepped gypsum board or CMU, painted	09260, 09910
43	prepped wonderboard, 12 x 24 staggered, vertical	09260, 09300
44	fiberglass shell	
WALLS		
51	none	

e= existing finish condition
n= new finish condition

Colorado Mountain College
Sopris Residence Hall Remodel
2600 County Road 114, Glenwood Springs, CO

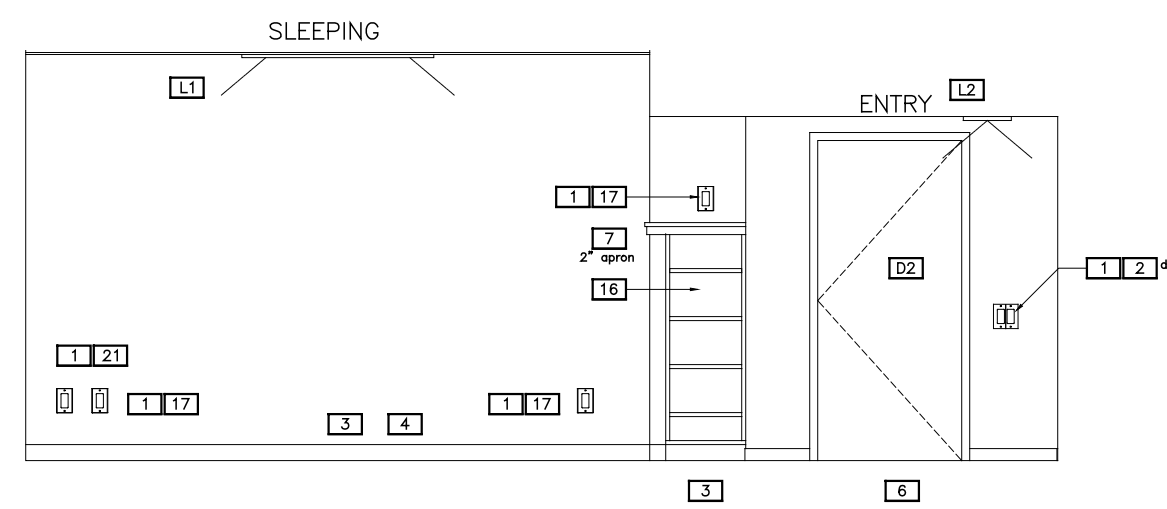
Construction
Renovation: Interior Elevations & Unit Plans
Date: 01-31-20 1911A-SV-01-31-20
RENO

TAG	RENOVATION NOTES
C 1	Duplex/ Switch wallplate Manufacturer: Leviton Model: Decora 80401-W (single) Model: Decora 80409-W (dual) Color: White Remarks: Adjust outlet height in bathroom to accommodate new cabinet and countertop height, (if needed)
C 2	Light Switch Manufacturer: Leviton Model: Decora 5601-2W Color: White
S 3	Resilient Wall Base -see 09653 Manufacturer: Johnsonite Type: 4" TP group 1 cove Color: Espresso 132
4	Existing floor surface to remain
S 5	New cabinet doors and drawer faces: (to match material, size & thickness as ones removed) Plastic Laminate- see 06411 Manufacturer: Wilsonart Color: Versailles 7923K-07 3 mm edging to match p. lam. Hardware information: Contact: ATGStores.com Product line: Jamison Collection Model: P130SN (30" vertical mount) locate at tall cabinet doors Model: P127SN (27" horizontal mount) located at large drawers Model: P106S N (6" horizontal mount) located at small drawers
S 6	Floor tile- See 09300 Prep existing floor per manufacturers recommendations Manufacturer: Daltile Product line: Exquisite Model: EQW10 Ivory Size: 12" x 12" (checkerboard) Grout Manufacturer: Mapei Color: #386 Oyster Gray Material transition strip Manufacturer: Schluter
S 7	Solid surface countertop/sill- see 06415 Manufacturer: Avonite Product: Palermo (F1-9144) Thickness: 1/2" Backsplash height to be 4" Apron trim to be 2"
X 8	Shower curtain rod
S 9	New shelves -see 06411 same material, width and depth as those removed. Provide 6 new shelves Plastic Laminate information: Manufacturer: Wilsonart Color: Versailles 7923K-07 Hardware information: Manufacturer: Knape and Vogt Standard #: 80 ALM ANO 72 Bracket #: 180 ANO xx (provide correct bracket per shelf depth)
S 10	Mirror - see 10820 Manufacturer: see spec Remarks: Replace Bath & commode with same size and style
C 11	Towel Ring Manufacturer: Delta Product line: Compel Product #: 77146-SS blocking & secured w/ heavy duty anchor
C 12	Toilet Paper Holder Manufacturer: Delta Product line: Compel Product #: 77250-SS blocking & secured w/ heavy duty anchor
C 13	Towel Bar Manufacturer: Delta Product line: Compel Product #: 77118-SS blocking & secured w/ heavy duty anchor
C 14	Door stop Manufacturer: Rockwood Door Hinge Pin at Entry: 528 HD NP Wall Stop at Bath: RM861 626

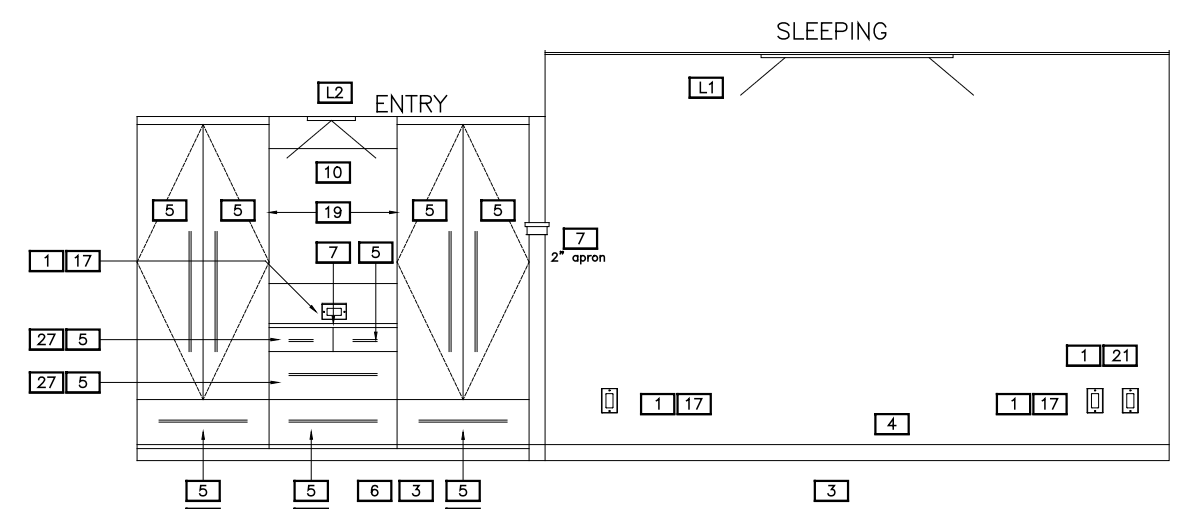
TAG	RENOVATION NOTES
S 15	New vanity cabinet to match -see 06411 material and depth same as removed. Height to be 36", (32" at ADA unit) Laminate information: Manufacturer: Wilsonart Color: Versailles 7923K-07 Hardware information: Location: ATGStores.com Product line: Jamison Collection Model: P110SN Length: 10"
S 16	Provide Cubby Shelving -see 06411 housing and adjustable shelves Laminate information: Manufacturer: Wilsonart Color: Versailles 7923K-07
C 17	Outlet / USB charger Manufacturer: Leviton Model: T5632-W Color: White
S 18	Shower wall Tile- see 09300 & 09620 Remove existing wall board and replace with wonderboard and red guard Manufacturer: Daltile Product line: Exquisite Model: EQW10 Ivory Size: 12" x 24"; vertical, 1/3 stagger Grout Manufacturer: Mapei Color: #386 Oyster Gray Material transition strip Manufacturer: Johnsonite Type: Horiz. & outside crnr. terminations
S 19	Plastic Laminate Whiteboard 3mm On Wardrobe Sidewalls Formica #20949
C 20	Outlet GFI Manufacturer: Leviton Model: Decora GFNT2-PW Color: White
V 21	Data / Communication outlet Manufacturer: Leviton Type D:21-M41642-W Decora insert 21-E61110-RW6 CAT 6 port 21-T41108-RW5 telephone Type C:21-M41642-W Decora insert 21-E61110-RW6 CAT 6 port 21-C41084-FWF Cable TV
C 22	Light Switch Manufacturer: Leviton Model: Decora DSE06-10Z Type: Rocker with dimmer slider, white
23	Not Used
24	Not Used
25	Reconditioned exist. HVAC grill, paint white
26	Reconditioned window shade
S 27	Drawer slider hardware- see 06411
S 28	Grab bars & escutcheon trim- see10820
29	Not Used
S 30	ADA Shower Seat- see 10820
C L1	1 x 4 LED surface mount- see schedule
C L2	1 x 1 LED surface mount- see schedule
C P1	Toilet - See schedule
C P2	Toilet ADA- See schedule
C P3	Sink- See schedule
C P4	Sink Faucet- See schedule
C P5	Sink- ADA- See schedule
C P6	Sink Faucet- ADA See schedule
C P7	Shower Faucet- See schedule
C P8	Shower Accessory- ADA- See schedule
C P9	Shower Valve- - See schedule
C D1	Entry Door- gel coat stain, match others provide kickplate, seal, door hinge pin
C D2	Bathroom Door- paint (match others) affix 2 robe hooks, Bath side
C D3	Bathroom Accordion Door- ADA

Product Identifier Tags:

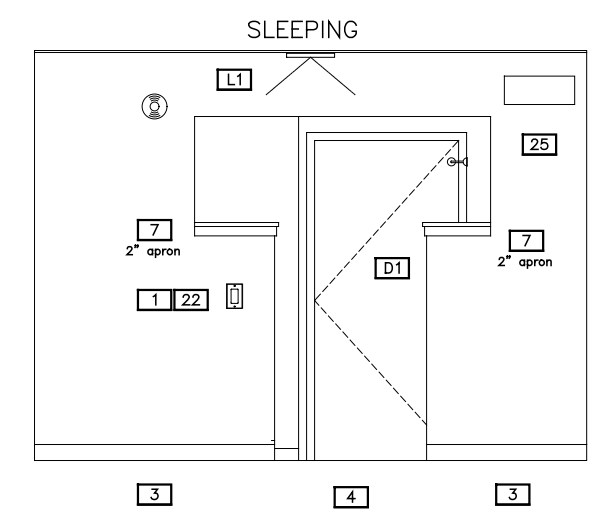
- Owner Purchased or reused, Contractor Installed
- Owner Purchased or reused, Owner Installed
- Product Cut Sheet Provided in Specification Booklet
- Refer to Specification Section
- By Owner contracted Vendor, coordinate schedule



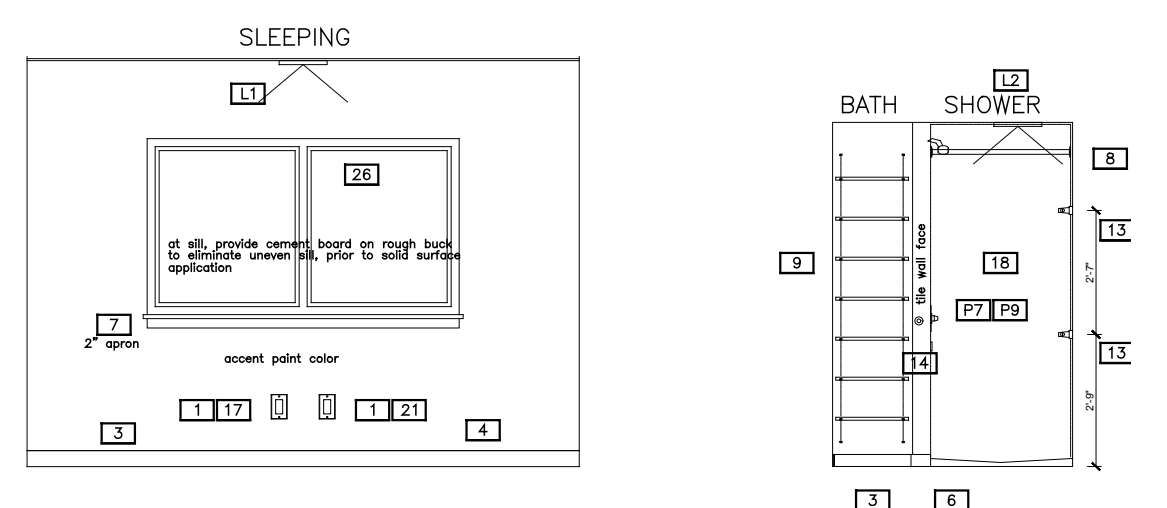
01 Interior Elev
scale: 1/4" = 1'-0"



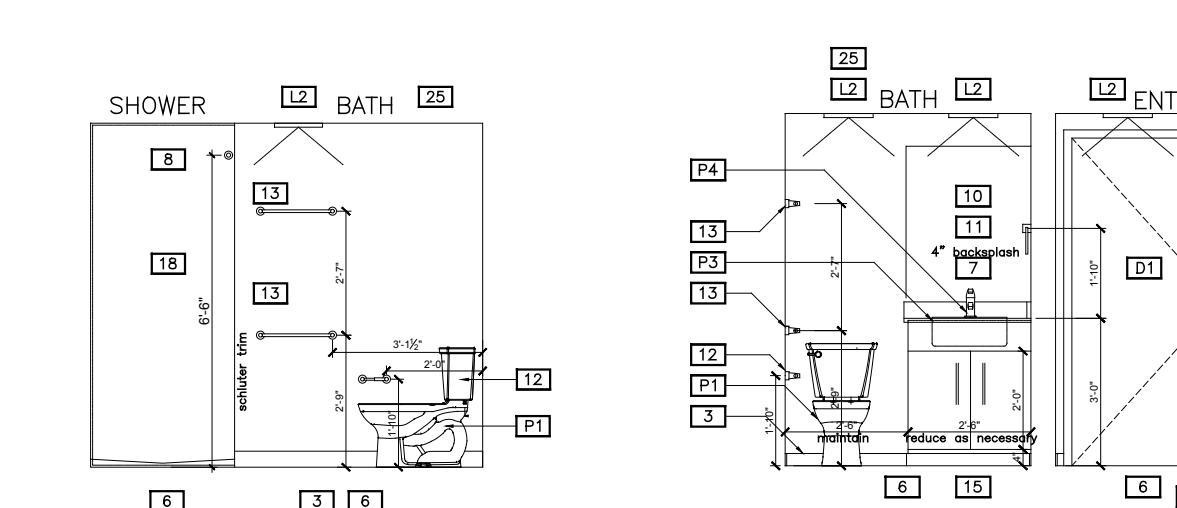
02 Interior Elev
scale: 1/4" = 1'-0"



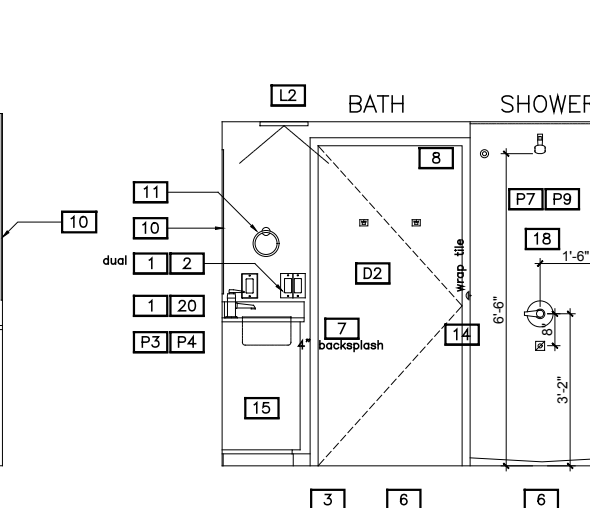
07 Interior Elev
scale: 1/4" = 1'-0"



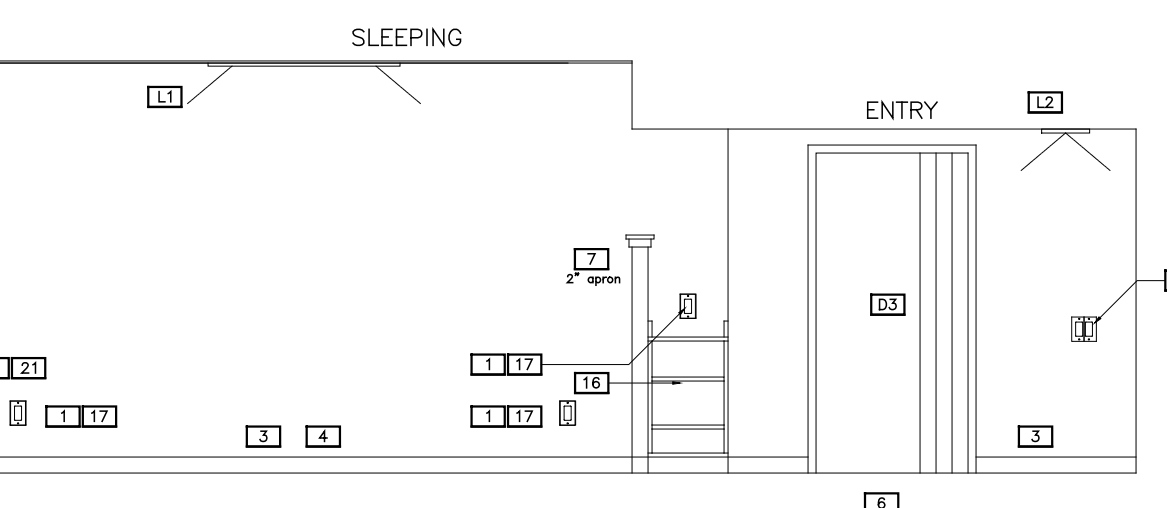
04 Interior Elev
scale: 1/4" = 1'-0"



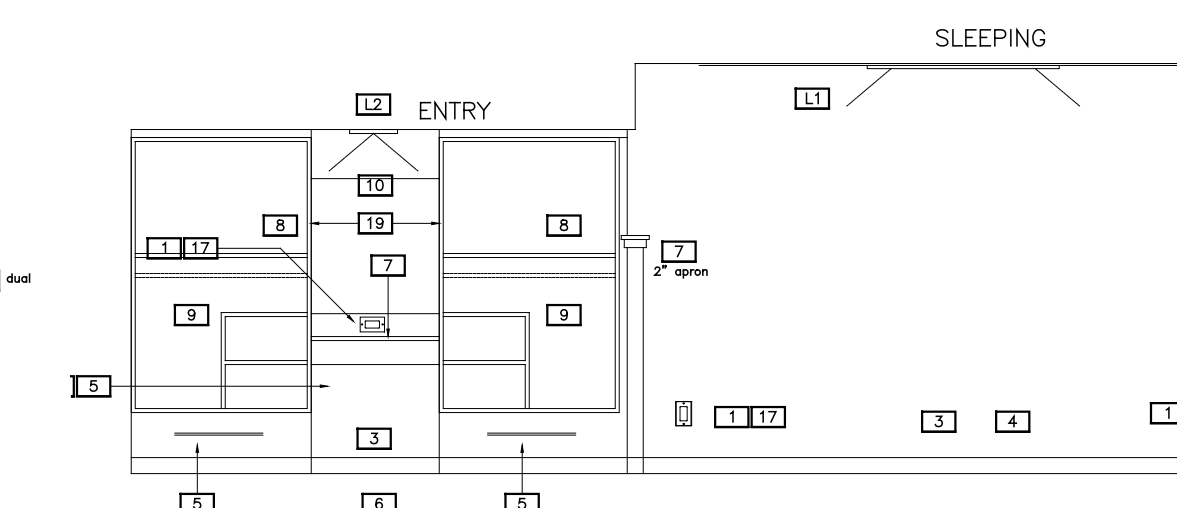
05 Interior Elev
scale: 1/4" = 1'-0"



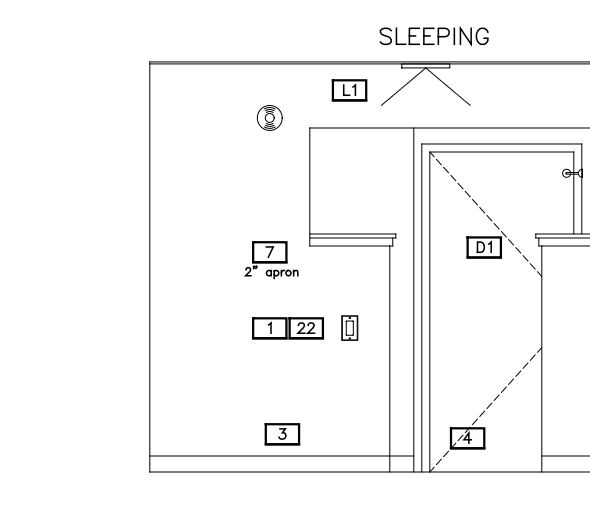
03 Interior Elev
scale: 1/4" = 1'-0"



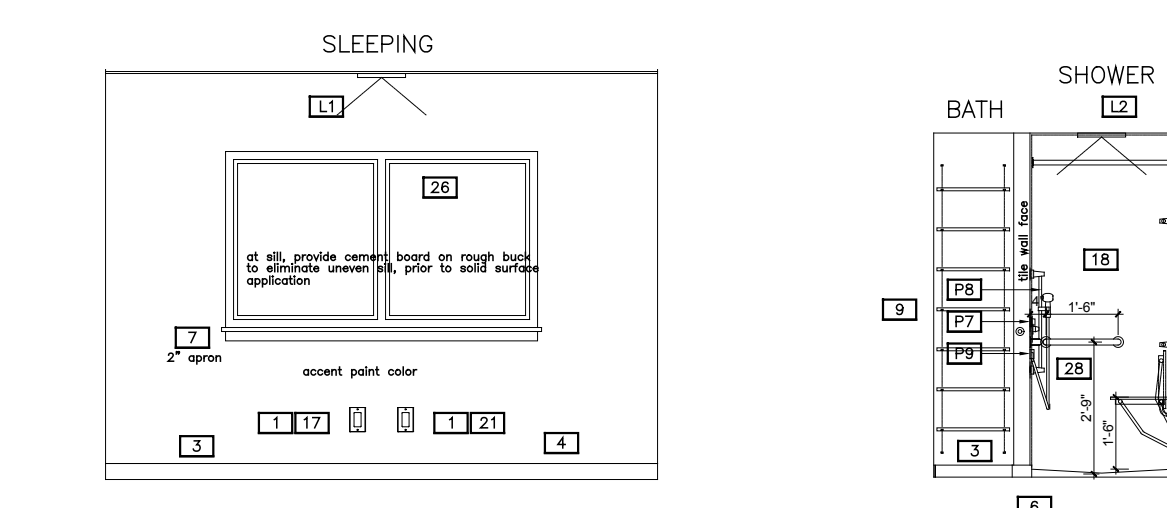
09 Interior Elev
scale: 1/4" = 1'-0"



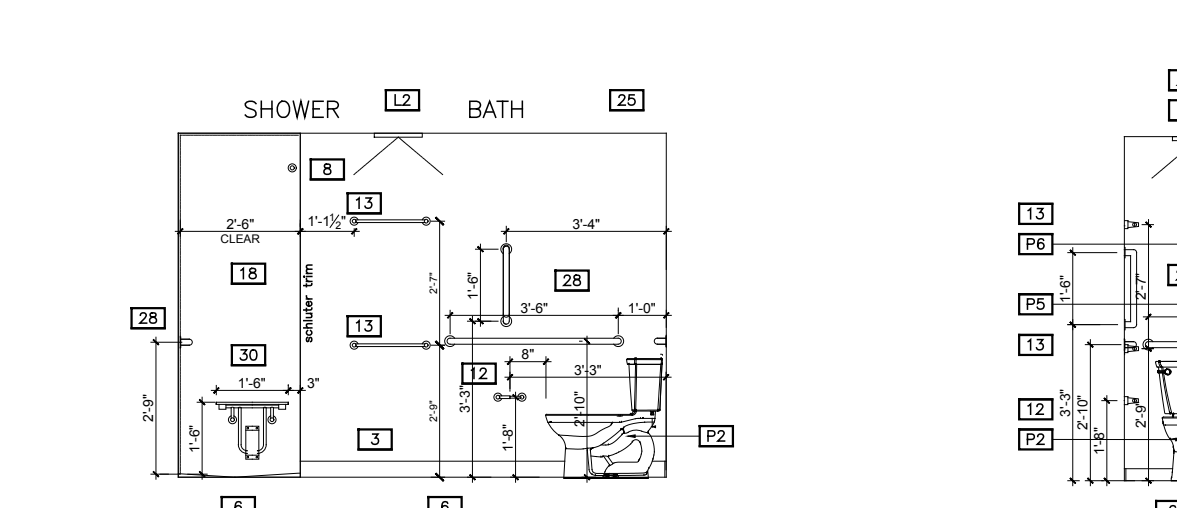
10 Interior Elev
scale: 1/4" = 1'-0"



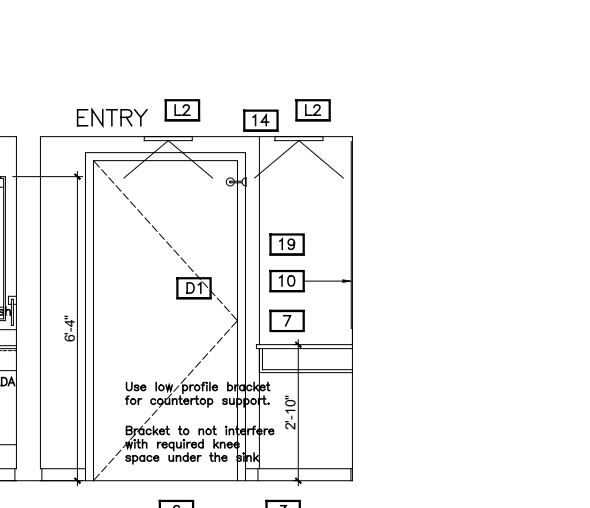
11 Interior Elev
scale: 1/4" = 1'-0"



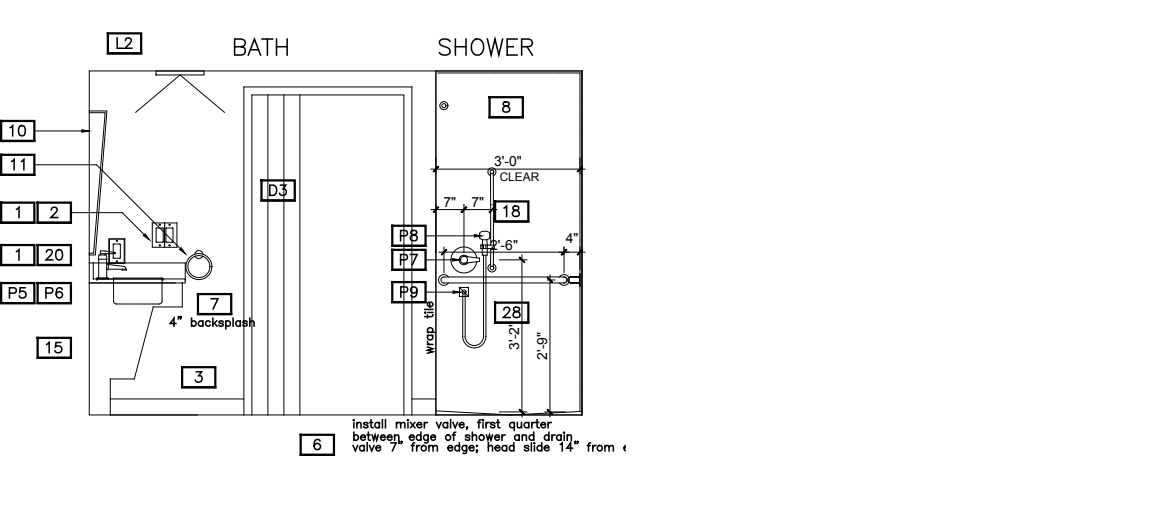
12 Interior Elev
scale: 1/4" = 1'-0"



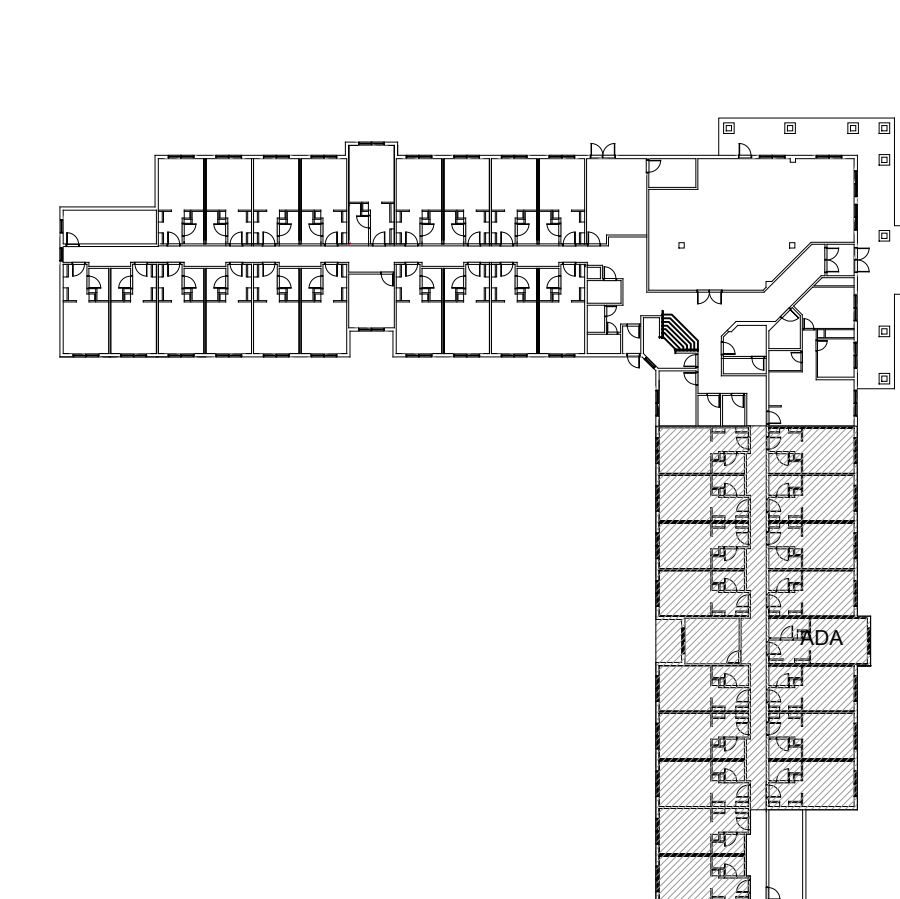
13 Interior Elev
scale: 1/4" = 1'-0"



14 Interior Elev
scale: 1/4" = 1'-0"



16 Interior Elev
scale: 1/4" = 1'-0"



First Floor South Wing

Jeff Johnson
Architectural PC
136 East Third Street
Rifle, CO 81650
970-625-0580
jjarch@prof.net
Copyright 2020



Colorado Mountain College
 Sopris Residence Hall Remodel
 2600 County Road 114, Glenwood Springs, CO

Tag	Description	Manuf.	Model	Remarks
L1	Ceiling Mounted Light	SATCO	62-1054	1 in sleeping room
L2	Ceiling Mounted Light	SATCO	62-1051	1 between wardrobe closets, 1 over entry door, 2 in bathroom

Tag	Description	Manuf.	Model	Remarks
P1	Toilet	American Standard	Cadet Pro Elongated	Delta 77160A lever, ProFlo PFTSWE2001WH Seat
P2	ADA Toilet	American Standard	Cadet Pro (3517A.101)	ADA, Delta 77160A lever, ProFlo PFTSWE2001WH Seat
P3	Sink	American Standard	0614.000.020	
P4	Faucet	Delta	561-SS MPU-DST	Compel Collection
P5	Sink	American Standard	0614.000.020	ADA compliant. If exposed pipes under sink, they must be insulated
P6	Faucet	Delta	561-SS MPU-DST	Compel Collection, ADA compliant
P7	Shower Faucet	Delta	T14261SS (T14061SS)	Compel Collection, (T14061SS) for ADA shower
P8	Shower Handset	Delta	50570SS, 56302SS, 59424SS24PK, 40024SS	ADA Compliant
P9	Shower Valve	Delta	R10000-UNWS	

Cut Sheets for TAG items in both schedules included in the Project Specification Booklet

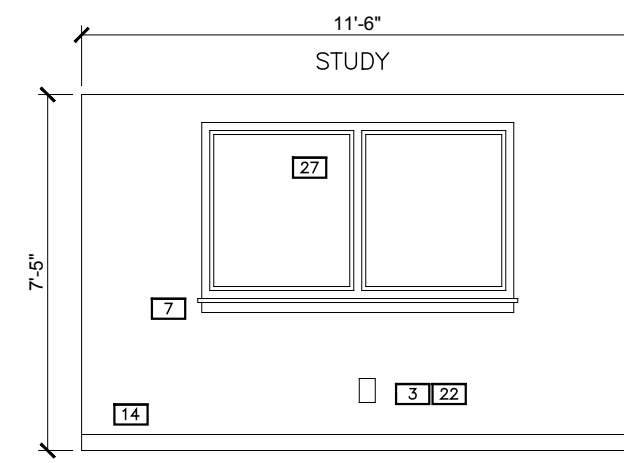
Construction
Renovation: Interior Elevations
Date: 01-31-20
1911A-SV-01-31-20
REN1

TAG	RENOVATION NOTES
C 1	Duplex/ Switch wallplate Manufacturer: Leviton Model: Decora 80401-W (single) Model: Decora 80409-W (dual) Color: White Remarks: Adjust outlet height in bathroom to accommodate new cabinet and countertop height, (if needed)
C 2	Light Switch Manufacturer: Leviton Model: Decora 5601-2W Color: White
S 3	Resilient Wall Base -see 09653 Manufacturer: Johnsonite Type: 4" TP group 1 cove Color: Espresso 132
4	Existing floor surface to remain
S 5	New cabinet doors and drawer faces: (to match material, size & thickness as ones removed) Plastic Laminate- see 06411 Manufacturer: Wilsonart Color: Versailles 7923K-07 3 mm edging to match p. lam. Hardware information: Contact: ATGStores.com Product line: Jamison Collection Model: P130SN (30" vertical mount) locate at tall cabinet doors Model: P127SN (27" horizontal mount) located at large drawers Model: P106S N (6" horizontal mount) located at small drawers
S 6	Floor tile- See 09300 Prep existing floor per manufacturers recommendations Manufacturer: Daltile Product line: Exquisite Model: EQW10 Ivory Size: 12" x 12" (checkerboard) Grout Manufacturer: Mapei Color: #386 Oyster Gray Material transition strip Manufacturer: Schluter
S 7	Solid surface countertop/sill- see 06415 Manufacturer: Avonite Product: Palermo (F1-9144) Thickness: 1/2" Backsplash height to be 4" Apron trim to be 2"
8	Shower curtain rod
S 9	New shelves -see 06411 same material, width and depth as those removed. Provide 6 new shelves Plastic Laminate information: Manufacturer: Wilsonart Color: Versailles 7923K-07 Hardware information: Manufacturer: Knape and Vogt Standard #: 80 ALM ANO 72 Bracket #: 180 ANO xx (provide correct bracket per shelf depth)
S 10	Mirror - see 10820 Manufacturer: see spec Remarks: Replace Bath & commode with same size and style
C 11	Towel Ring Manufacturer: Delta Product line: Compel Product #: 77146-SS blocking & secured w/ heavy duty anchor
C 12	Toilet Paper Holder Manufacturer: Delta Product line: Compel Product #: 77250-SS blocking & secured w/ heavy duty anchor
C 13	Towel Bar Manufacturer: Delta Product line: Compel Product #: 77118-SS blocking & secured w/ heavy duty anchor
C 14	Door stop Manufacturer: Rockwood Door Hinge Pin at Entry: 528 HD NP Wall Stop at Bath: RM861 626

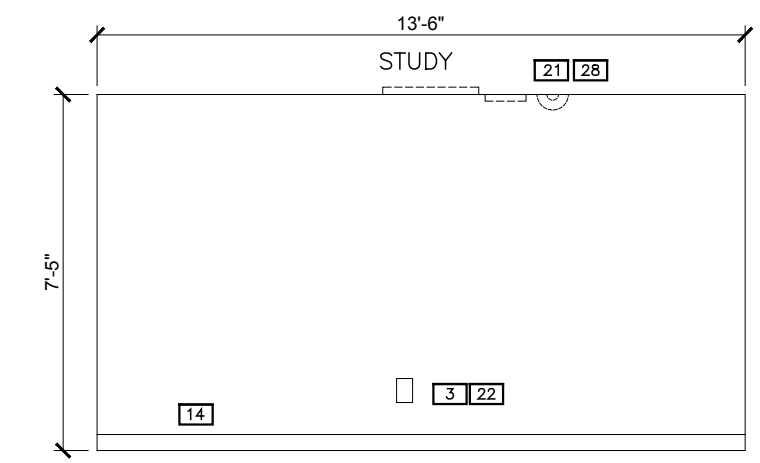
TAG	RENOVATION NOTES
S 15	New vanity cabinet to match -see 06411 material and depth same as removed. Height to be 36", (32" at ADA unit) Laminate information: Manufacturer: Wilsonart Color: Versailles 7923K-07 Hardware information: Location: ATGStores.com Product line: Jamison Collection Model: P110SN Length: 10"
S 16	Provide Cubby Shelving -see 06411 housing and adjustable shelves Laminate information: Manufacturer: Wilsonart Color: Versailles 7923K-07
C 17	Outlet / USB charger Manufacturer: Leviton Model: T5632-W Color: White
S 18	Shower wall Tile- see 09300 & 09620 Remove existing wall board and replace with wonderboard and red guard Manufacturer: Daltile Product line: Exquisite Model: EQW10 Ivory Size: 12" x 24"; vertical, 1/3 stagger Grout Manufacturer: Mapei Color: #386 Oyster Gray Material transition strip Manufacturer: Johnsonite Type: Horiz. & outside crnr. terminations
S 19	Plastic Laminate Whiteboard 3mm On Wardrobe Sidewalls Formica #20949
C 20	Outlet GFI Manufacturer: Leviton Model: Decora GFNT2-PW Color: White
V 21	Data / Communication outlet Manufacturer: Leviton Type D:21-M41642-W Decora insert 21-E61110-RW6 CAT 6 port 21-T41108-RW5 telephone Type C:21-M41642-W Decora insert 21-E61110-RW6 CAT 6 port 21-C41084-FWF Cable TV
C 22	Light Switch Manufacturer: Leviton Model: Decora DSE06-10Z Type: Rocker with dimmer slider, white
23	Not Used
24	Not Used
25	Reconditioned exist. HVAC grill, paint white
26	Reconditioned window shade
S 27	Drawer slider hardware- see 06411
S 28	Grab bars & escutcheon trim- see10820
29	Not Used
S 30	ADA Shower Seat- see 10820
C L1	1 x 4 LED surface mount- see schedule
C L2	1 x 1 LED surface mount- see schedule
C P1	Toilet - See schedule
C P2	Toilet ADA- See schedule
C P3	Sink- See schedule
C P4	Sink Faucet- See schedule
C P5	Sink- ADA- See schedule
C P6	Sink Faucet- ADA See schedule
C P7	Shower Faucet- See schedule
C P8	Shower Accessory- ADA- See schedule
C P9	Shower Valve- - See schedule
C D1	Entry Door- gel coat stain, match others provide kickplate, seal, door hinge pin
C D2	Bathroom Door- paint (match others) affix 2 robe hooks, Bath side
C D3	Bathroom Accordion Door- ADA

Product Identifier Tags:

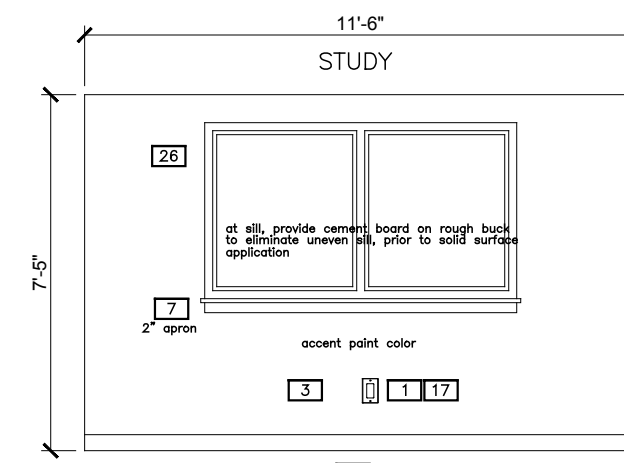
- Owner Purchased or reused, Contractor Installed
- Owner Purchased or reused, Owner Installed
- Product Cut Sheet Provided in Specification Booklet
- Refer to Specification Section
- By Owner contracted Vendor, coordinate schedule



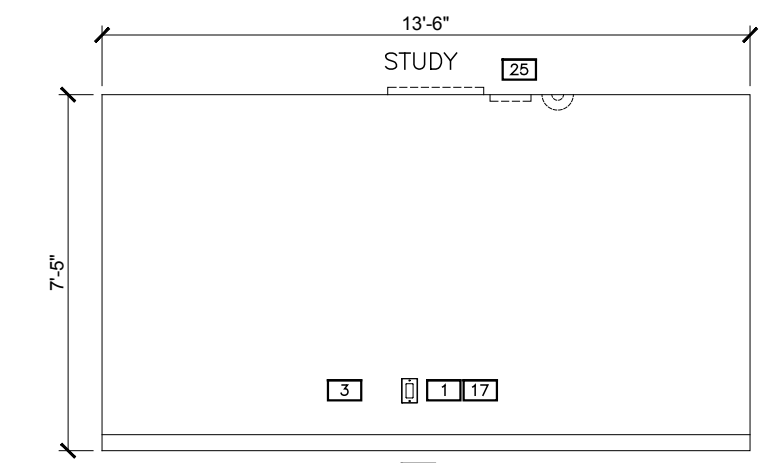
1 Interior Elev
scale: 1/4" = 1'-0"



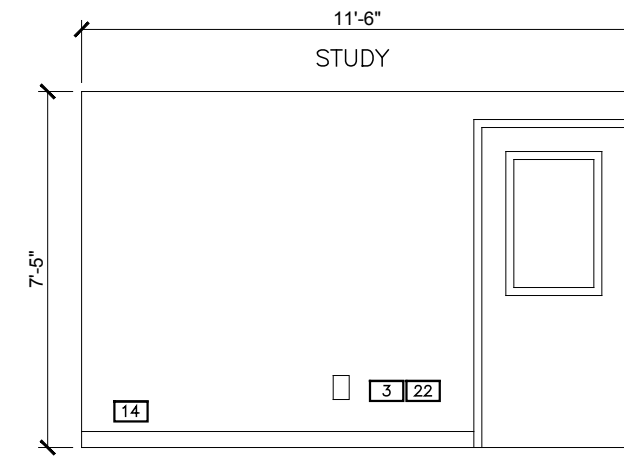
2 Interior Elev
scale: 1/4" = 1'-0"



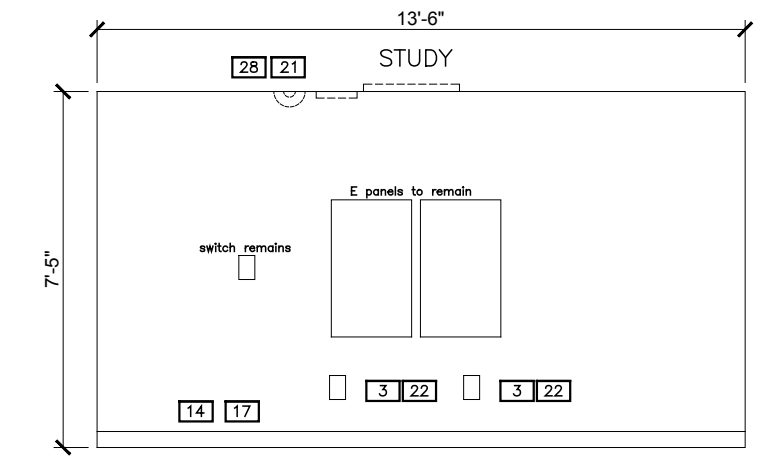
5 Interior Elev
scale: 1/4" = 1'-0"



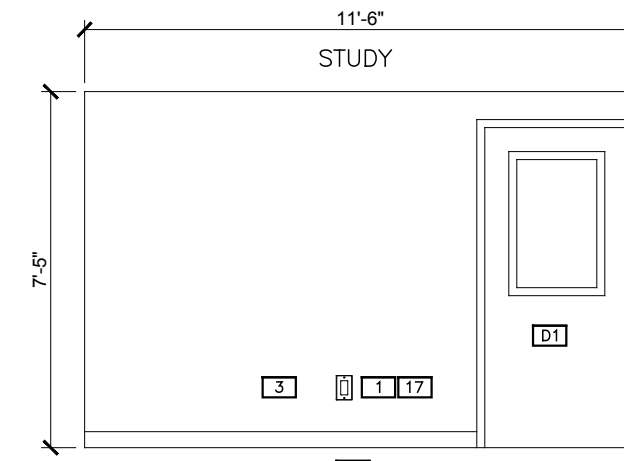
6 Interior Elev
scale: 1/4" = 1'-0"



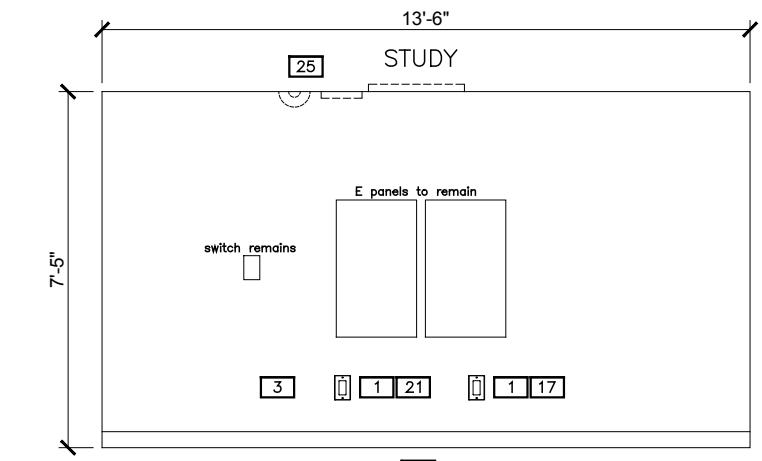
3 Interior Elev
scale: 1/4" = 1'-0"



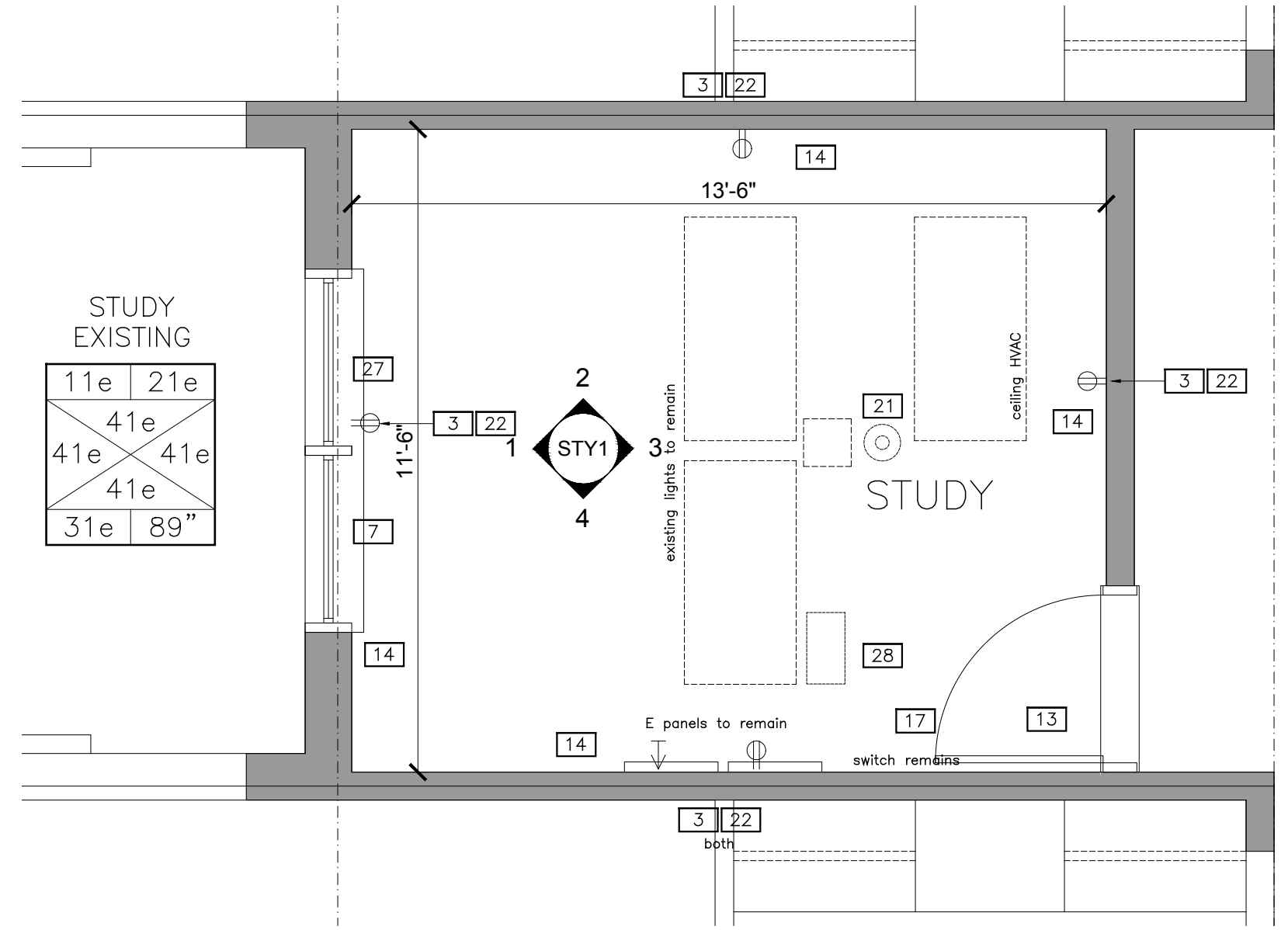
4 Interior Elev
scale: 1/4" = 1'-0"



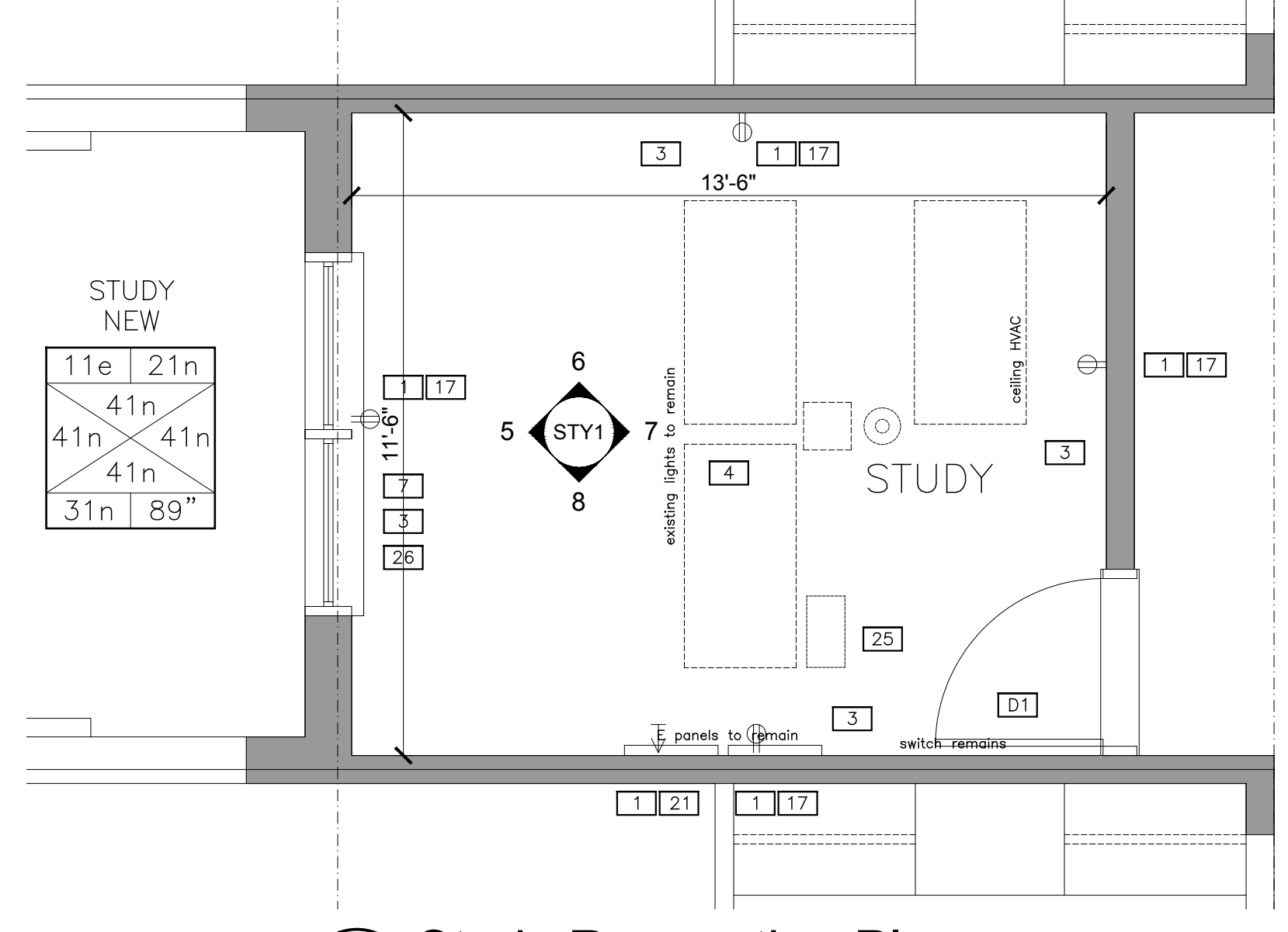
7 Interior Elev
scale: 1/4" = 1'-0"



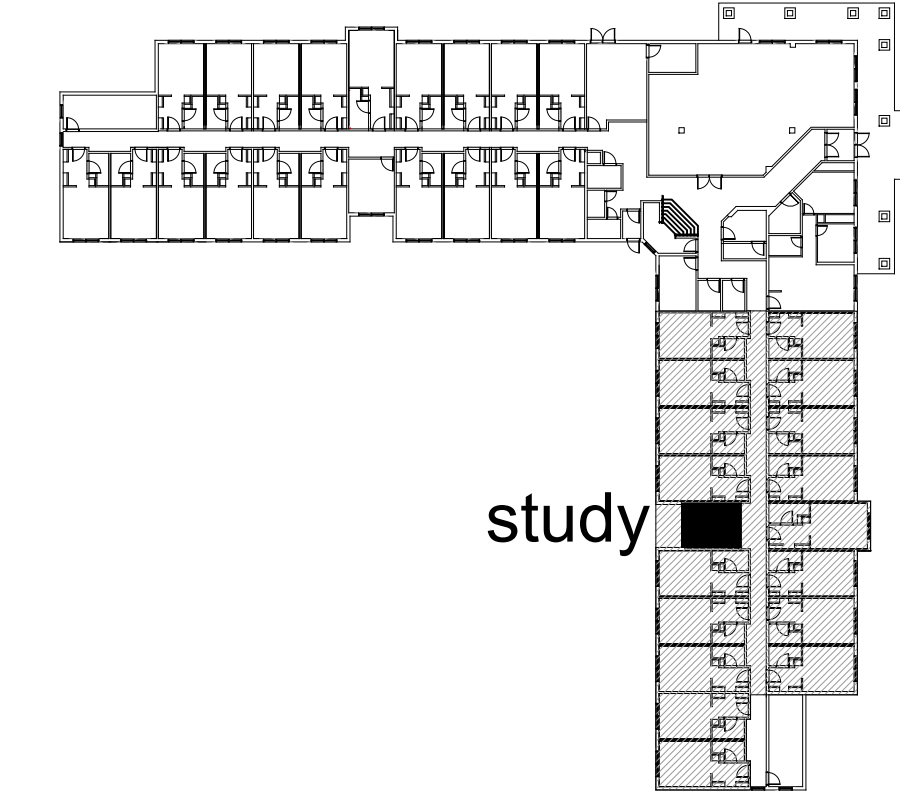
8 Interior Elev
scale: 1/4" = 1'-0"



9 Study Demolition Plan
scale: 3/8" = 1'-0"



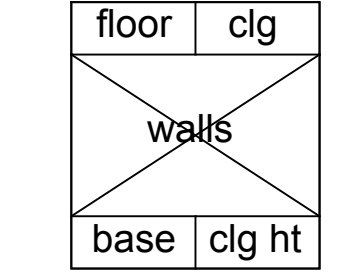
10 Study Renovation Plan
scale: 3/8" = 1'-0"



First Floor South Wing

TAG	DEMOLITION NOTES
1	Remove wall cap and trim
2	Remove entire shelving system
3	Remove all electrical device wall plates (exposed face panels only at drawers)
4	Remove existing cabinet doors and drawers
5	Not Used
6	Remove countertop and backsplash
7	Remove window sill and trim
8	Remove existing sink and faucet
9	Remove existing toilet
10	Remove mirror
11	Remove wall mounted towel bars/ring see note 3
12	Remove toilet paper holder see note 3
13	Remove & retain existing doors see note 4
14	Remove wall base
15	Remove existing light fixtures
16	Remove existing shelves, brackets and standards
17	Remove wall & floor mounted door stops
18	Remove existing shower walls see note 1
19	Remove shower rod
20	Remove existing shower faucet & valve
21	Protect existing detector
22	Remove existing wall electric boxes
23	Remove existing vanity cabinet
24	Remove accordion style door and frame
25	Remove existing grab bars see note 3
26	Remove existing drawer slides
27	Remove & retain existing window shades
28	Remove & retain existing HVAC grill
29	Remove existing flooring
30	Remove existing ceiling texture see note 2

- Note 1: At shower locations: remove existing walls to size of new shower enclosure. Install 1/2" cementitious board on all sides. Apply RedGuard water-proofing to cementitious board. Install thinset, ceramic tile, and grout per Specifications
- Note 2: At Sleeping room ceiling Wet and scrape off popcorn texture to concrete substrate. Caulk and seal at wall corner and ceiling joints. Prime and paint ceiling.
- Note 3: Remove drywall in areas to receive new wall mounted items such that blocking can be installed for secure mounting, replace drywall, prep for prime and paint.
- Note 4: Doors to be refinished as directed in Specification Section 09910
- Note 5: Remove any existing wall corner guards (new installed by Owner after renovation)



TAG	Interior Finishes Legend	
FLOOR	11 wood laminate flooring	
	12 carpet	09680
	13 12 x 12 floor tile	09300
	14 fiberglass base	
	15 12 x 12 floor tile over prepped base	09260, 09300
	16 sheet vinyl	
CEILING	20 painted heavy texture	048100
	21 gypsum board, painted	09910
	22 prepped smooth ceiling, caulked seams, painted	09910
SE	31 4" resilient base	09653
WALLS	41 gypsum board or CMU, painted	09910
	42 prepped gypsum board or CMU, painted	09260, 09910
	43 prepped wonderboard, 12 x 24 staggered, vertical	09260, 09300
	44 fiberglass shell	
	51 none	

e= existing finish condition
n= new finish condition

Jeff Johnson
Architectural PC
136 East Third Street
Rifle, CO 81650
970-625-0580
jjarch@rof.net
Copyright 2020

STATE OF COLORADO
FREEDY SCOTT JOHNSON
01-31-20
203480
LICENSED ARCHITECT

Colorado Mountain College
Sopris Residence Hall Remodel
2600 County Road 114, Glenwood Springs, CO

Construction

Study:
Demo &
Renovation
Drawings

Date: 01-31-20
1911A-SV-01-31-20

STY1