

Jeff Johnson
Architectural PC
136 EAST THIRD STREET
SUITE B
RIFLE CO, 81650

PHONE 970-625-0580
FAX 970-625-0581

JEFF JOHNSON

Owner/Architect



COLORADO MOUNTAIN COLLEGE

SPRING VALLEY SOPRIS HALL 2021 PROJECT SPECIFICATIONS Glenwood Springs, CO

INDEX:

| | |
|--------|-------------------------------------|
| 01100 | Summary |
| 01300 | Administrative Requirements |
| 01600 | Product Requirements |
| 01700 | Execution and Closeout Requirements |
| 01730 | Cutting and Patching |
| 01732 | Selective Demolition |
| Insert | Demolition Notes |
| Insert | Renovation Notes |
| Insert | Finish Summary |
| 06411 | Plastic Laminated Items |
| 06415 | Solid Surface Counters |
| 09260 | Gypsum Board Assemblies |
| 09300 | Ceramic Tile |
| 09651 | Corner Guards |
| 09653 | Resilient Base |
| 09910 | Paints |
| 10820 | Bath Accessories |
| Insert | Schedules |
| Insert | Cut Sheets |



SECTION 01100- SUMMARY

PART 1- GENERAL

1.1 SUMMARY

- A. Project Identification: Colorado Mountain College Sopris Hall Renovations
- B. Project Summary: Second floor selective demolition and subsequent renovation of residence hall units, as outlined in Drawings and Specifications, at the following Colorado Mountain College Residence Hall:
 - Sopris Hall, Spring Valley Campus, Glenwood Springs, CO:
Third Floor, 44 units, (3 are ADA)
- C. Permits and Fees: Owner shall apply for, obtain, and pay for State of Colorado building permits, fees, and utility company charges required to perform the work. **Contractor shall obtain necessary Electrical and Plumbing Permits to perform Scope of Work.** Submit copies to Architect.
- D. Codes: Comply with applicable codes and regulations of authorities having jurisdiction. Submit copies of inspection reports, notices and similar communications to Owner.
- E. Dimensions: Verify dimensions indicated on drawings with field dimensions before fabrication or ordering of materials. Do not scale drawings.
- F. Existing Conditions: Notify Architect of existing conditions differing from those indicated on the drawings. Do not remove or alter structural components without prior written approval.
- G. Coordination:
 - 1. Coordinate the work of all trades.
 - 2. Prepare coordination drawings for areas above ceilings where close tolerances are required between building elements and mechanical and electrical work.
 - 3. Verify location of utilities and existing conditions.
 - 4. Coordinate schedule to accommodate owner contracted IT and cabling subcontractor.
- H. Installation Requirements, General:
 - 1. Inspect substrates and report unsatisfactory conditions in writing.
 - 2. Do not proceed until unsatisfactory conditions have been corrected.
 - 3. Take field measurements prior to fabrication where practical. Form to required shapes and sizes with true edges, lines and angles. Provide inserts and templates as needed for work of other trades.
 - 4. Install materials in exact accordance with manufacturer's instructions & approved submittals.
 - 5. Install materials in proper relation with adjacent construction and with proper appearance.
 - 6. Restore units damaged during installation. Replace units which cannot be restored at no additional expense to the Owner.
 - 7. Refer to additional installation requirements and tolerances specified under individual specification sections.
- I. Limit of Use: Limit use of work as indicated. Keep driveways and entrances clear.

- J. Existing Construction: Maintain existing building in a weather tight condition. Repair damage caused by construction operations. Protect building and its occupants.
- K. Definitions:
 - 1. Provide: Furnish and install, complete with all necessary accessories, ready for intended use. Pay for all related costs.
 - 2. Approved: Acceptance of item submitted for approval. Not a limitation or release for compliance with the Contract Documents or regulatory requirements. Refer to limitations of 'Approved' in General and Supplementary Conditions.
 - 3. Match Existing: Match existing as acceptable to the Owner.
- L. Intent: Drawings and specifications are intended to provide the basis for proper completion of the work suitable for the intended use of the Owner. Anything not expressly set forth but which is reasonable implied or necessary for proper performance of the project shall be included.
- M. Writing Style: Specifications are written in the imperative mode. Except where specifically intended otherwise, the subject of all imperative statements is the Contractor. For example, 'Provide tile' means 'Contractor shall provide tile.'

1.2 PROJECT SPECIFIC INFORMATION

- A. Schedule:

Contractor to provide Owner with schedule at time of Bid Proposal indicating a logical chain of specific work items, start date, projected end date, key milestones, and date of substantial completion.
- B. Key Dates:

| | |
|------------------------------------|------------------------------|
| Construction start date: | Monday, May 10, 2021 |
| Construction completion: | no later than July 31, 2021 |
| Punch list item completion: | no later than August 4, 2021 |
- C. Wall Repair Unit Price:

There are a number of walls within units planned for renovation that contain defect that will require attention. Owner shall coordinate a walk through where these walls will be identified for repair. As a result, **Contractor to provide Owner with wall repair unit price based on square footage at time of Bid Proposal.** Unit price shall include labor and materials related to removal of existing defective wall substrate, replacement with new substrate, surface preparation including floating area beyond defective area into acceptable wall, prime coat, texturing, and final coat of paint.
- D. Breaker replacement:

Per DORA Colorado State Inspector, in order to meet NEC requirements, existing breakers need to be replaced with code required AFCI type as shown in Cut sheet section. General Contractor to deenergize, disconnect, and remove existing breakers to rooms in remodeled areas, replace, then reenergize and test circuits. **General Contractor shall provide a price to perform this scope and provide the Owner with a unit price based on each residential unit at time of Bid Proposal.**
- E. Isolation Valve **Add Alternate:**

General Contractor to provide quote to install isolation shutoff valves on 2" hot, cold water and recirculation lines. Price to include labor to bleed down building, install ball valves, couplings, and fiberglass insulation tape (12" per ball valve).

D. Floor Protection:

Contractor to provide floor protection in hallways, elevator, and units during construction as follows:

6 mil poly plastic over 1/8" cardboard

E. Owner Purchased Items:

Colorado Mountain College may elect to purchase items and materials for Contractor to install. Contractor will coordinate with Owner, based on Contractor provided Construction Schedule, so that items and materials will be available to Contractor in a timely fashion such that there are no delays in the Scope of Work.

PART 2- PRODUCTS - Not Applicable to This Section

PART 3- EXECUTION - Not Applicable to This Section

END OF SECTION

SECTION 01300 - ADMINISTRATIVE REQUIREMENTS

PART 1 - GENERAL

1.1 PROJECT MANAGEMENT AND COORDINATION

- A. Coordinate construction to ensure efficient and orderly installation of each part of the Work.
- B. Conduct progress meetings at Project site every week as necessary. Notify Owner of meeting dates and times. Require attendance of each subcontractor or other entity concerned with current progress or involved with planning or coordination of future activities.
 - 1. Upon Owner request, record minutes and distribute to parties involved.
- C. Contractor to provide Owner with updated three week forecast schedule at each meeting.

1.2 SUBMITTAL PROCEDURES

- A. Coordinate each submittal with fabrication, purchasing, testing, delivery, other submittals, and related activities that require sequential activity.
 - 1. No extension of the Contract Time will be authorized because of failure to transmit submittals enough in advance of the Work to permit processing.
 - 2. Submittals from sources other than Contractor will not be accepted.
 - 3. Identify deviations from the Contract Documents, failure to do so will result in rejection.
 - 4. Submit three copies of each submittal.
- B. Place a permanent label or title block on each submittal for identification. Provide a 4- by 5-inch space on the label or beside title block to record review and approval markings and action taken. Include the following information on the label:
 - 1. Project name.
 - 2. Date.
 - 3. Name and address of Contractor.
 - 4. Name and address of subcontractor or supplier.
 - 5. Number and title of appropriate Specification Section.
- C. Owner or Architect will review each submittal, mark as appropriate to indicate action taken, and return copies less those retained. Compliance with specified requirements remains Contractor's responsibility.
- D. Construction Schedule Submittal Procedure:
 - 1. Submit schedule within ten business days after date established for Commencement of the Work. Distribute copies to Owner, subcontractors, and parties required to comply with dates.
 - 2. Submit schedule within ten business days after date established for Commencement of the Work. Distribute copies to Owner, subcontractors, and parties required to comply with dates.
 - 3. Revise the schedule after each meeting or activity where revisions have been made. As Work progresses, mark each bar to indicate actual completion. Distribute revised copies to Owner, subcontractors, and parties required to comply with dates.

PART 2 - PRODUCTS

2.1 ACTION SUBMITTALS

- A. Product Data: Mark each copy to show applicable choices and options. Include the following:
 - 1. Data indicating compliance with specified standards and requirements.
 - 2. Notation of coordination requirements.
- B. Shop Drawings: Submit Project-specific information drawn to scale. Do not base Shop Drawings on reproductions of the Contract Documents or standard printed data. Submit 1 reproducible print and 1 blue- or black-line print on sheets at least 8-1/2 by 11 inches but no larger than 24 by 36 inches. Include the following:
 - 1. Dimensions, profiles, methods of attachment, large scale details, and other information, as appropriate for the Work.
 - 2. Identification of products and materials.
 - 3. Notation of coordination requirements.
 - 4. Notation of dimensions established by field measurement.
- C. Samples: Submit Samples finished as specified and identical with the material proposed. Where variations are inherent in the material, submit sufficient units to show full range of the variations. Include name of manufacturer and product name on label.

2.2 INFORMATION SUBMITTALS

- A. Construction Schedule: Prepare a horizontal bar-chart Contractor's construction schedule.
 - 1. Provide a separate time bar for each activity, and a vertical line to identify the first workday of each week.
 - 2. Coordinate each element with other activities. Show each activity in proper sequence. Indicate sequences necessary for completion of related Work.
 - 3. Indicate Substantial Completion and allow time for Owner's procedures necessary for certifying Substantial Completion.
- B. Product Certificates: Prepare written statements on manufacturer's letterhead certifying that product complies with requirements.
- C. Warranties: Provide all product specified warranties on manufacturer's letterhead

PART 3 - EXECUTION (Not Applicable)

END OF SECTION

SECTION 01600 - PRODUCT REQUIREMENTS

PART 1 - GENERAL

1.1 SECTION REQUIREMENTS

- A. Provide products of same kind from a single source. The term "product" includes the terms "material," "equipment," "system," and similar terms.
- B. Product Substitutions: Substitutions include products and methods of construction differing from that required by the Contract Documents and proposed by Contractor. Substitutions will not be considered prior to award of Bid.
 - 1. Submit three copies of each request for product substitution.
 - 2. Submit requests in time to permit processing of request and subsequent submittals, if any, sufficiently in advance of when materials are required in the Work. Do not submit unapproved substitutions on Shop Drawings or other submittals.
 - 3. Identify product to be replaced and provide complete documentation showing compliance of proposed substitution with applicable requirements. Include a full comparison with the specified product, a list of changes to other Work required to accommodate the substitution, and the proposed reduction in the Contract Sum or the Contract Time should the substitution be accepted.
 - 4. Architect will review the substitution and notify Contractor of its acceptance or rejection.
- C. Deliver, store, and handle products using means and methods that will prevent damage, deterioration, and loss, including theft. Comply with manufacturer's written instructions.
 - 1. Schedule delivery to minimize long-term storage at Project site and to prevent overcrowding of construction spaces.
 - 2. Deliver products to Project site in manufacturer's original sealed container or packaging, complete with labels and instructions for handling, storing, unpacking, protecting, and installing.
 - 3. Inspect products on delivery to ensure compliance with the Contract Documents and to ensure that products are undamaged and properly protected.
 - 4. Store materials in a manner that will not endanger Project structure.
 - 5. Store products that are subject to damage by the elements, under cover in a weathertight enclosure above ground, with ventilation adequate to prevent condensation.

PART 2 - PRODUCTS

2.1 PRODUCT OPTIONS

- A. Select products to comply with all of the following that are applicable:
 - 1. Where a product or manufacturer is named, provide the item indicated. No substitutions will be permitted without prior approval by the Architect.
 - 2. Where a product is described with required characteristics, provide a product that complies with those characteristics.
 - 3. Where compliance with performance requirements is specified, provide products that comply and are recommended in writing by the manufacturer for the application.
 - 4. Where compliance with codes, regulations, or standards, is specified, select a product that complies with the codes, regulations, or standards referenced.
- B. Unless otherwise indicated, Architect will select color, pattern, and texture of each product from manufacturer's full range of standard options.

PART 3 - EXECUTION (Not Applicable)

END OF SECTION

SECTION 01700 - EXECUTION AND CLOSEOUT REQUIREMENTS

PART 1 - GENERAL

1.1 CLOSEOUT SUBMITTALS

- A. Record Drawings: Maintain a set of the Contract Drawings as Record Drawings. Mark to show installation that varies from the Work originally shown.
- B. Operation and Maintenance Data: Organize data into three-ring binders with identification on front and spine of each binder and pocket folders for folded sheet information. Include the following:
 - 1. Manufacturer's operation and maintenance brochures.
 - 2. Emergency instructions.
 - 3. Spare parts list.
 - 4. Overstock quantity list
 - 5. Copies of warranties.

PART 2 - PRODUCTS (Not Applicable)

PART 3 - EXECUTION

3.1 EXAMINATION AND PREPARATION

- A. Examine substrates and conditions for compliance with manufacturer's written requirements including, but not limited to, surfaces that are sound, level, plumb, smooth, clean, and free of deleterious substances; substrates within installation tolerances; and application conditions within environmental limits. Proceed with installation only after unsatisfactory conditions have been corrected.
- B. Verify layout information shown on Drawings, in relation to property survey and existing benchmarks, before laying out the Work.
- C. Prepare substrates and adjoining surfaces according to manufacturer's written instructions, including, but not limited to, filler and primer application.
- D. Take field measurements as required to fit the Work properly. Where fabricated products are to be fitted to other construction, verify dimensions by field measurement before fabricating and, when possible, allow for fitting and trimming during installation.

3.2 CUTTING AND PATCHING

- A. Do not cut structural members or operational elements without prior written approval of Owner selected Structural Engineer.
- B. For patching, provide materials whose installed performance will equal or surpass that of existing materials. For exposed surfaces, provide or finish materials to visually match existing adjacent surfaces to the fullest extent possible.
- C. Refer to Specification Section 01730 for more information.

3.3 INSTALLATION

- A. Comply with manufacturer's written instructions for installation. Securely anchor each product with commercial grade connectors, including Owner provided- Contractor installed items. Anchor to wall or floor in accurately located and aligned locations.
- B. Clean exposed surfaces and protect from damage. If applicable, prepare surfaces for field finishing.
- C. Clean Project site and work areas daily, including common areas.

3.4 FINAL CLEANING

- A. Clean each surface or item as follows before requesting inspection for certification of Substantial Completion:
 - 1. Remove labels that are not permanent.
 - 2. Clean transparent materials, including mirrors. Remove excess glazing compounds. Replace chipped or broken glass.
 - 3. Clean exposed finishes to a dust-free condition, free of stains, films, and foreign substances. Leave concrete floors broom clean.
 - 4. Vacuum carpeted surfaces and wax resilient flooring.
 - 5. Wipe surfaces of mechanical and electrical equipment. Remove excess lubrication. Clean plumbing fixtures. Clean light fixtures and lamps.
 - 6. Clean the job site. Sweep paved areas; remove stains, spills, and foreign deposits.
- B. Coordinate with Owner to verify acceptable condition prior to Owner provided final cleaning service scheduling their work

3.5 CLOSEOUT PROCEDURES

- A. Substantial Completion: Before requesting Substantial Completion inspection, complete the following:
 - 1. Advise Owner of pending insurance changeover requirements.
 - 2. Submit specific warranties, maintenance agreements, and similar documents.
 - 3. Obtain and submit releases permitting Owner unrestricted use of the Work and access to services and utilities. Include occupancy permits, operating certificates, and similar releases.
 - 4. Submit Record Drawings and Specifications, operation and maintenance manuals, property surveys, and similar final record information, if applicable.
 - 5. Deliver tools, spare parts, extra materials, and similar items.
 - 6. Changeover locks and transmit keys to Owner, if applicable.
 - 7. Complete startup testing of systems and instruction of operation and maintenance personnel.
 - 8. Advise Owner of changeover information related to Owner's occupancy, operation, and maintenance.
 - 9. Complete final cleaning requirements as described above, including touchup painting.
 - 10. Touch up and otherwise repair and restore exposed finishes to eliminate visual defects.
- B. On receipt of a request for inspection, Architect will proceed with inspection or advise Contractor of unfulfilled requirements. Architect will prepare the Certificate of Substantial Completion after inspection or advise Contractor of items that must be completed or corrected before the certificate will be issued.
- C. Request inspection for certification of Final Completion, once the following are complete:
 - 1. Submit a copy of Substantial Completion inspection list stating that each item has been completed or otherwise resolved for acceptance.

2. Instruct Owner's personnel in operation, adjustment, and maintenance of products, equipment, and systems.
- D. Architect or Owner will reinspect the Work on receipt of notice that the Work has been completed.
 1. On completion of reinspection, Architect or Owner will prepare a final Certificate for Payment. If the Work is incomplete, Architect or Owner will advise Contractor of the Work that is incomplete or obligations that have not yet been fulfilled.

3.6 DEMONSTRATION AND TRAINING

- A. Provide experienced instructors for each piece of equipment that requires operation and maintenance to provide instruction to Owner's personnel. Include a detailed review of the following: operations, adjustments, troubleshooting, maintenance, and repair.

END OF SECTION

SECTION 01732- SELECTIVE DEMOLITION

PART 1- GENERAL

1.1 SUMMARY

- A. Selective Demolition:
 - 1. Selective demolition of interior partitions, systems, and building components to be removed in accordance with performing the scope of work.
 - 2. Protection of building elements adjacent to or affected by selective demolition.
 - 3. Removal of abandoned utilities and wiring systems.
 - 4. Pollution control during selective demolition, including noise control.
 - 5. Removal and legal disposal of materials.
- B. Hazardous Materials: Asbestos and hazardous materials demolition or removal work is not part of this contract. Removal of materials containing asbestos and other hazardous materials, if found, will be handled under a separate contract.

1.2 SUBMITTALS

- A. Schedule: Integrate demolition schedule into construction schedule submittal

1.3 QUALITY ASSURANCE

- A. Codes and Regulations: Comply with governing codes and regulations.
Use experienced workers.

1.4 PROJECT CONDITIONS

- A. Occupancy: Immediate areas of work may be occupied during selective demolition. Contractor to coordinate with Owner about isolating the workspace from other areas within the building.
- B. Contractor will coordinate schedule with the Owner to obtain access to below floor areas, if necessary, for the purpose of performing the scope of work.
- C. Contractor will coordinate secure access and staging areas with the Owner prior performing the scope of work.

PART 2- Not Used

PART 3- EXECUTION

3.1 SELECTIVE DEMOLITION

- A. Demolition Operations: Do not damage building elements and improvements indicated to remain. Items of salvage value, not included on schedule of salvage items to be returned to Owner, shall be removed from structure. Storage or sale of items at project site is prohibited.
- B. Utilities: Locate, identify, disconnect, and seal or cap off utilities in buildings to be removed.
- C. Occupied Spaces: Do not close or obstruct streets, walks, drives or other occupied or used spaces or facilities without the written permission of the Owner and the authorities having jurisdiction. Do not interrupt utilities serving occupied or used facilities without the written permission of the Owner and authorities having jurisdiction. If necessary, provide temporary utilities.

- D. Operations: Cease operations if public safety or remaining structures are endangered. Perform temporary corrective measures until operations can be continued properly.
- E. Internal security: Provide adequate protection against accidental trespassing. Secure project after work hours.
- F. Restoration: Restore finishes of patched areas.

END OF SECTION

TAG **DEMOLITION NOTES** SPV

| | |
|----|--|
| 1 | Remove wall cap and trim |
| 2 | Remove entire shelving system |
| 3 | Remove all electrical device wall plates |
| 4 | Remove existing cabinet doors and drawers (exposed face panels only at drawers) |
| 5 | Not Used |
| 6 | Remove countertop and backsplash |
| 7 | Remove window sill and trim |
| 8 | Remove existing sink and faucet |
| 9 | Remove existing toilet |
| 10 | Remove mirror |
| 11 | Remove wall mounted towel bars/ring see note 3 |
| 12 | Remove toilet paper holder see note 3 |
| 13 | Remove & retain existing doors see note 4 |
| 14 | Remove wall base |
| 15 | Remove existing light fixtures |
| 16 | Remove existing shelves, brackets and standards |
| 17 | Remove wall & floor mounted door stops |
| 18 | Remove existing shower walls see note 1 |
| 19 | Remove shower rod |
| 20 | Remove existing shower faucet & valve |
| 21 | Protect existing detector and sprinkler |
| 22 | Remove existing wall electric boxes |
| 23 | Remove existing vanity cabinet |
| 24 | Remove accordian style door and frame |
| 25 | Remove existing grab bars see note 3 |
| 26 | Remove existing drawer slides |
| 27 | Remove & retain existing window shades |
| 28 | Remove & retain existing HVAC grill |
| 29 | Remove existing flooring |
| | |
| | |

Note 1: At shower locations: remove existing walls to size of new shower enclosure. Install 1/2" cementitious board on all sides. Apply RedGard water-proofing to cementitious board. Install thinset, ceramic tile, and grout per Specifications

Note 2: Not Used

Note 3: Remove drywall in areas to receive new wall mounted items such that blocking can be installed for secure mounting, replace drywall, prep for prime and paint.

Note 4: Doors to be refinished as directed in Specification Section 09910

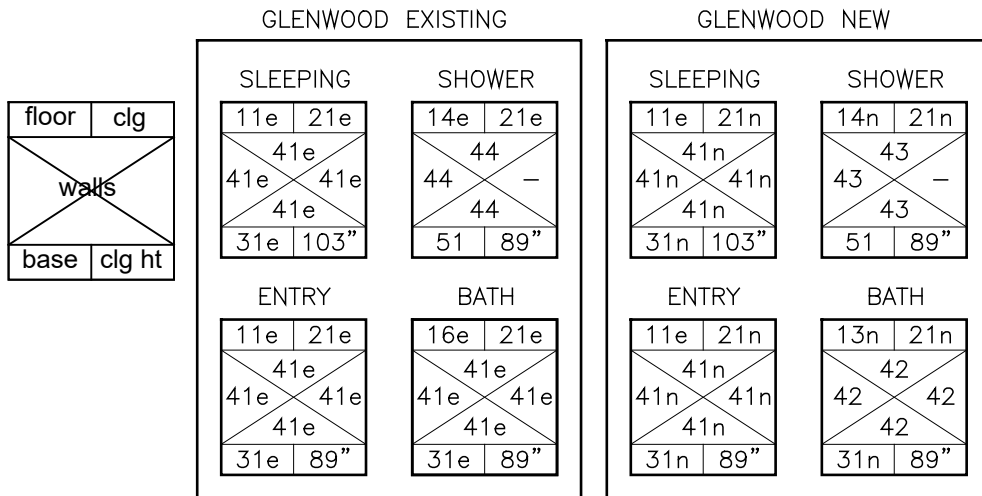
Note 5: Remove any existing wall corner guards

| TAG | | RENOVATION NOTES |
|-----|----|--|
| C | 1 | Duplex/ Switch wallplate Manufacturer: Leviton Model: Decora 80401-W (single) Model: Decora 80409-W (dual) Color: White Remarks: Adjust outlet height in bathroom to accommodate new cabinet and countertop height, (if needed) |
| C | 2 | Light Switch Manufacturer: Leviton Model: Decora 5601-2W Color: White |
| S | 3 | Resilient Wall Base –see 09653 Manufacturer: Johnsonite or Flexco Type: 4" TP group 1 cove Color: Espresso 132 or Chocolate |
| | 4 | Existing floor surface to remain |
| S | 5 | New cabinet doors and drawer faces: (to match material, size & thickness as ones removed) Plastic Laminate– see 06411 Manufacturer: Wilsonart Color: Versailles 7923K-07 3 mm edging to match p. lam. Hardware information: Contact: ATGStores.com Product line: Jamison Collection Model: P130SN (30" vertical mount) locate at tall cabinet doors Model: P127SN (27" horizontal mount) located at large drawers Model: P106S N (6" horizontal mount) located at small drawers |
| S | 6 | Floor tile– See 09300 Prep existing floor per manufacturers recommendations Manufacturer: Daltile Product line: Exquisite Model: EQW10 Ivory Size: 12" x 12" (checkerboard) Grout Manufacturer: Mapei Color: #386 Oyster Gray Material transition strip Manufacturer: Schluter |
| S | 7 | Solid surface countertop/sill– see 06415 Manufacturer: Avonite Product: Palermo (F1-9144) Thickness: 1/2" Backsplash height to be 4" Apron trim to be 2" |
| X | 8 | Shower curtain rod |
| S | 9 | New shelves –see 06411 same material, width and depth as those removed. Provide 6 new shelves Plastic Laminate information: Manufacturer: Wilsonart Color: Versailles 7923K-07 Hardware information: Manufacturer: Knappe and Vogt Standard #: 80 ALM ANO 72 Bracket #: 180 ANO xx (provide correct bracket per shelf depth) |
| S | 10 | Mirror – see 10820 Manufacturer: see spec Remarks: Replace Bath & commode with same size and style |
| C | 11 | Towel Ring Manufacturer: Delta Product line: Compel Product #: 77146-SS blocking & secured w/ heavy duty anchor |
| C | 12 | Toilet Paper Holder Manufacturer: Delta Product line: Compel Product #: 77150-SS blocking & secured w/ heavy duty anchor |
| C | 13 | Towel Bar Manufacturer: Delta Product line: Compel Product #: 77118-SS blocking & secured w/ heavy duty anchor |
| C | 14 | Door stop Manufacturer: Design House Existing stop at Entry Floor Stop at Bath: 204735 |

| TAG | | RENOVATION NOTES |
|-----|----|---|
| S | 15 | New vanity cabinet to match –see 06411 material and depth same as removed. Height to be 36", (32" at ADA unit) Laminate information: Manufacturer: Wilsonart Color: Versailles 7923K-07 Hardware information: Location: ATGStores.com Product line: Jamison Collection Model: P110SN Length: 10" |
| S | 16 | Provide Cubby Shelving –see 06411 housing and adjustable shelves Laminate information: Manufacturer: Wilsonart Color: Versailles 7923K-07 |
| C | 17 | Outlet / USB charger Manufacturer: Leviton Model: T5632-W Color: White (upper & lower @ cubbie) |
| S | 18 | Shower wall Tile– see 09300 & 09620 Remove existing wall board and replace with wonderboard and red guard Manufacturer: Daltile Product line: Exquisite Model: EQW10 Ivory Size: 12" x 24"; vertical, staggered Grout Manufacturer: Mapei Color: #386 Oyster Gray Material transition strip Manufacturer: Johnsonite Type: Horiz. & outside crnr. terminations |
| S | 19 | Plastic Laminate Whiteboard 3mm On Wardrobe Sidewalls Formica #20949 |
| C | 20 | Outlet GFI Manufacturer: Leviton Model: Decora GFNT2-PW Color: White |
| V | 21 | Data / Communication outlet Manufacturer: Leviton Type D:21-M41642-W Decora insert 21-E61110-RW6 CAT 6 port 21-T41108-RW5 telephone Type C:21-M41642-W Decora insert 21-E61110-RW6 CAT 6 port 21-C41084-FWF Cable TV |
| C | 22 | Light Switch Manufacturer: Leviton Model: Decora DSE06-10Z Type: Rocker with dimmer slider, white |
| C | 23 | Corner Guards, all outside corners |
| | 24 | Not Used |
| | 25 | Reconditioned exist. HVAC grill, paint white |
| | 26 | Reconditioned window shade |
| S | 27 | Drawer slider hardware– see 06411 |
| S | 28 | Grab bars & escutcheon trim– see 10820 |
| | 29 | Not Used |
| S | 30 | ADA Shower Seat– see 10820 |
| C | L1 | 1 x 4 LED surface mount– see schedule |
| C | L2 | 1 x 1 LED surface mount– see schedule |
| C | P1 | Toilet – See schedule |
| C | P2 | Toilet ADA– See schedule |
| C | P3 | Sink– See schedule |
| C | P4 | Sink Faucet– See schedule |
| C | P5 | Sink– ADA– See schedule |
| C | P6 | Sink Faucet– ADA See schedule |
| C | P7 | Shower Faucet– See schedule |
| C | P8 | Shower Accessory– ADA– See schedule |
| C | P9 | Shower Valve– – See schedule |
| C | D1 | Entry Door– gel coat stain, match others provide kickplate, seal, door stop |
| C | D2 | Bathroom Door– paint (match others) affix 2 robe hooks, Bath side |
| C | D3 | Bathroom Accordion Door– ADA Woodfold Series 220 |

Product Identifier Tags:

- Owner Purchased or reused, Contractor Installed
- X Owner Purchased or reused, Owner Installed
- C Product Cut Sheet Provided in Specification Booklet
- S Refer to Specification Section
- V By Owner contracted Vendor, coordinate schedule



TAG Interior Finishes Legend

| | | | |
|---------|----|--|---------------|
| FLOOR | 11 | wood laminate flooring | |
| | 12 | carpet | 09680 |
| | 13 | 12 x 12 floor tile | 09300 |
| | 14 | fiberglass base | cut sheet P10 |
| | 15 | floor tile over prepped base | 09260, 09300 |
| | 16 | sheet vinyl | |
| CEILING | 20 | painted heavy texture | 048100 |
| | 21 | gypsum board, painted | 09910 |
| | 22 | prepped smooth ceiling, caulked seams, painted | 09910 |
| BASE | 31 | 4" resilient base | 09653 |
| WALLS | 41 | gypsum board or CMU, painted | 09910 |
| | 42 | prepped gypsum board or CMU, painted | 09260, 09910 |
| | 43 | prepped wonderboard, 12 x 24 staggered, vertical | 09260, 09300 |
| | 44 | fiberglass shell | |
| | 51 | none | |
| | | | |
| | | | |
| | | | |

e= existing finish condition
n= new finish condition

SECTION 06411- PLASTIC LAMINATED ITEMS

PART 1- GENERAL

1.1 SUMMARY

- A. Section includes plastic laminated faced architectural cabinets, shelving, and refaced wardrobe doors and drawers.

1.2 REQUIREMENTS

- A. Submittals:
 - Product Data, Shop Drawings, and material and color Samples.
 - Show location of each item, dimensioned plans and elevations, details, attachment devices, and other components.
- B. Verify dimensions in field; measure for countertops after base cabinets are installed.
- C. Standards:
 - 1. Architectural Woodwork Institute (AWI) 'Architectural Woodwork Quality Standards.
 - 2. BHMA A156.11: Cabinet Locks.
 - 3. NEMA LD 3: High Pressure Decorative Laminates.
- D. Related Items: Section 06415 Solid Surface Counters
- E. Provide necessary blocking to ensure sound, tight, and secure installation.
- F. Fabricator Qualifications:
 - Shop that employs skilled workers who custom fabricate products similar to those required for this Project and whose products have a record of successful in-service performance.
- G. Delivery, Storage, and Handling:
 - Do not deliver cabinets until painting and similar operations that could damage woodwork have been completed in installation areas.

PART 2 – PRODUCTS

2.1 DECORATIVE LAMINATE

- A. High-Pressure Decorative Laminate:
 - 1. Material: NEMA LD 3, Grades HGL and HGP, 1.0 mm thick
 - 2. Manufacturer: Subject to compliance with requirements, provide Wilsonart LLC; Decorative Plastic Laminates
 - 3. Edge Banding: Provide 3mm thickness, color to match adjacent laminate

2.2 SHELVING

- A. Cubby shelving and housing opposite wardrobe:
 - Expand existing cubby shelving at wall niche adjacent to sleeping room opposite wardrobe. Provide base shelf and flush face plate. Base shelf shall be installed 1/2" above top of resilient wall base. Provide 3 sided finished 3/4" plywood or MDF housing, height to match sidewall. Note that back housing wall will require field cut to adjust location of existing power outlet. Provide sidewalls of housing with 1/4" predrilled holes at 1 1/2" intervals, aligned and level, 1 1/2" from front and back. Provide bead of white silicon sealant at exposed material transitions.
 - 1. Material: 3/4" min. thickness plywood or MDF.

2. Depth: Match existing depth
3. Width: Match existing width
4. Quantity: Four adjustable height shelves above base shelf
5. Finish: Plastic laminate veneer all exposed sides
Wilsonart Versailles 7923K-07
6. Hardware: 1/4" diameter x 13/16" shaft pin supports for adjustable shelving
Pin supports shall have a spoon (paddle) design.
Rockler Item# 22773 Nickel

B. Shelving within Bathroom:

Replace existing shelves, brackets, and supports at bathroom niche adjacent to shower

1. Material: 3/4" min. thickness plywood or MDF.
2. Depth: Match existing depth
3. Width: Match existing width
4. Quantity: Six adjustable height shelves
5. Finish: Plastic laminate veneer all exposed sides
Wilsonart Versailles 7923K-07
6. Hardware: Vertical Standards: 72"
Knappe & Vogt 80 ALM ANO 72 Anochrome
Support Brackets: *Match existing depth
Knappe & Vogt 80 ALM ANO XX* Anochrome

2.3 CASEWORK

A. Bath Vanity Cabinet:

1. Material: 3/4" min. thickness plywood or MDF.
2. Depth: 24"
3. Width: 30" (verify infield, adjust for toilet clearance)
4. Height: 35 1/2" (to receive 1/2" solid surface counter)
5. Finish: Plastic laminate veneer all exposed sides and doors
Wilsonart Versailles 7923K-07
Cabinet base interior white melamine
6. Style: Standard sink base, 4" toe kick, faced valance,
36w x 24h flush double hinged door.
7. Hardware: Hinges:
Frameless Concealed Hinges (European Type): BHMA A156.9
100 degrees of opening, self-closing.
Pulls: 10" vertical: ATGstores.com; Jamison Collection, P110SN
8. Provide bead of white silicon sealant at exposed material transitions.

B. ADA Bath Vanity:

1. Material: 3/4" min. thickness plywood or MDF.
2. Depth: 24"
3. Width: 30"
4. Height: 35 1/2" (to receive 1/2" solid surface counter)
5. Finish: Plastic laminate veneer all exposed sides and doors
Wilsonart Versailles 7923K-07
6. Style: Standard ADA sink base, 9" toe kick, faced valance.
Outside face panel shaped for clearance opposite wall.
Provide removable angled face panel to cover internal plumbing
Refer to drawings.
7. Hardware: Sink bracket
A&M-ADAVAN-23-BL
8. Provide bead of white silicon sealant at exposed material transitions.

2.4 WARDROBE DOORS & DRAWERS

- A. Replace all hardware, doors and drawer faces of existing wardrobe casework.
 - 1. Material: 3/4" min. thickness plywood or MDF.
 - 2. Depth: Match existing depth
 - 3. Width: Match existing depth
 - 4. Style: Match existing
 - 5. Finish: Plastic laminate veneer all exposed sides
Wilsonart Versailles 7923
 - 6. Hardware: Hinges:
 - HAFELE Five Knuckle Hinge 354-65-220Pulls: 30" Vertical
 - Tall Cabinet Doors: ATGstores.com; Jamison Collection, P130SNPulls: Horizontal
 - Smaller Drawers: 6", ATGstores.com; Jamison Collection, P106SN
 - Wide Drawers: 27" ATGstores.com; Jamison Collection, P1275NDrawer Slides:
 - Grade 1HD-100: Side mounted; full over travel extension type;
 - Zinc plated steel ball bearing slides. BHMA A156.9.
 - (Worth PROICO series)Provide 2 self-stick adhesive, 1/2" round felt pad stoppers at each door/drawer

2.5 WARDROBE SIDEWALL

- A. Provide new laminated surface for dry erase markers
 - 1. Material: 3mm min. laminate veneer
 - 2. Size: Cut to fit wardrobe side
 - 3. Finish: Formica #20949

2.6 MISCELLANEOUS

- A. Furring, Blocking, Shims, and Hanging Strips: Provide kiln dried lumber to less than 15 percent moisture content.
- B. Anchors: Select material, type, size, and finish required for each substrate for secure anchorage. Provide metal expansion sleeves or expansion bolts for post-installed anchors. Use nonferrous-metal or hot-dip galvanized anchors and inserts at inside face of exterior walls and at floors.
- C. Complete fabrication, including assembly and hardware application, to maximum extent possible before shipment to Project site. Disassemble components only as necessary for shipment and installation. Where necessary for fitting at site, provide ample allowance for scribing, trimming, and fitting.

PART 3 – EXECUTION

3.1 PREPARATION

- A. Before installation, condition cabinets to prevailing humidity conditions in installation areas.
- B. Before installing cabinets, examine shop-fabricated work for completion and complete work as required.

3.2 INSTALLATION

- A. Install cabinets with no variations in flushness of adjoining surfaces by using concealed shims. Where casework abuts other finished work, scribe and cut for accurate fit. Repair damaged finish at cuts. Provide filler strips, scribe strips, and moldings in finish to match casework face.
- B. Install cabinets without distortion so doors and drawers fit openings properly and are aligned.
- C. Install level and plumb to a tolerance of 1/8 inch in 8 feet.
- D. Fasten each cabinet to adjacent unit and to structural members of wall construction. Fasten wall cabinets through back, near top and bottom, at ends and not less than 24 inches o.c.
- E. Install materials and systems in accordance with manufacturer's instructions and approved submittals. Install materials and systems in proper relation with adjacent construction. Coordinate with work of other sections.
- F. Comply with manufacturer's requirements for cutting, handling, fastening and working treated materials.

3.3 ADJUSTING AND CLEANING

- A. Repair damaged and defective cabinets, where possible, to eliminate functional and visual defects; where not possible to repair, replace woodwork. Adjust joinery for uniform appearance.
- B. Clean, lubricate, and adjust hardware.
- C. Clean cabinets on exposed and semi-exposed surfaces. Clean decorative plastic laminate surfaces according to manufacturer's written care and maintenance instructions.
- D. Protect completed work from damage for duration of construction period.

END OF SECTION

SECTION 06415- SOLID SURFACE

PART 1- GENERAL

1.1 SUMMARY

- A. Section includes solid surface window sill, wall caps, counters, and shower liner.

1.2 REQUIREMENTS

A. Submittals:

Submit Shop Drawings:

1. Include countertop layout, dimensions, materials, finishes, cutouts, and attachments.
2. Show seams, termination points, and details of edges.
3. Show coordination and interface with electrical and plumbing work.
4. Verify dimensions in field; measure for countertops after base cabinets are installed.

B. Standards:

1. NEMA LD 3: High Pressure Decorative Laminates.

C. Related Items: Section 06411 Plastic Laminated Items
Reference cut sheets

D. Provide necessary blocking to ensure sound, tight, and secure installation.

E. Installer Qualifications:

Firm with a minimum of 2 years documented experience in installation of systems similar in complexity to those required for this Project, and acceptable to or licensed by manufacturer.

F. Delivery, Storage, and Handling:

1. Deliver sheets, fabricated items, materials and components in manufacturer's original, unopened, undamaged containers with identification labels intact.
2. Store products in manufacturer's unopened packaging until ready for installation.
3. Store and dispose of solvent-based materials, and materials used with solvent-based materials, in accordance with requirements of local authorities having jurisdiction.

G. Warranty:

Provide manufacturer's 10 year limited written installed warranty.

1.3 PERFORMANCE

A. Performance Characteristics based on ½-inch thickness:

1. Flame Spread Index: Class A when tested in accordance with ASTM E 84.
2. Specific Gravity: 25.5 grams/cu. in.
3. Hardness: 55, when tested in accordance with ASTM D 2583
4. Elongation: 0.42%, when tested in accordance with ASTM D 638
5. Tensile strength: 4,200psi, when tested in accordance with ASTM D 638
6. Tensile Modulus: 11 x 10⁵, when tested in accordance with ASTM D 638
7. Abrasion Resistance at 1000 cycles: 0.4 grams, when tested in accordance with ASTM C 501
8. Water Absorption after 24 hours: .06%, when tested in accordance with ASTM D 570
9. Izod Impact Foot Pounds per Inch: .02, when tested in accordance with ASTM D 256
10. Impact Resistance ½-Pound: No Fracture, when tested in accordance with NEMA LD3-3.3
11. Linear Thermal Expansion: 1.8 x 10⁻⁵, when tested in accordance with ASTM D 696
12. High Temperature Resistance: No Effect, when tested in accordance with NEMA LD3-3.6
13. Boiling Water Resistance: No Effect, when tested in accordance with NEMA LD3-3.5

- 14. Stain Resistance: No Effect, when tested in accordance with NEMA LD3-3.9
- 15. Weight per sq. ft., ½-inch thickness: 4.0 pounds
- 16. Recycled Content: Minimum 40%

PART 2 – PRODUCTS

2.1 MANUFACTURERS

- A. Acceptable Manufacturer: Aristech Surfaces LLC – manufacturer of the Avonite brand of solid surface; 7350 Empire Dr., Florence, KY 41042. ASD. Tel. Toll Free: 800-354-9858. Phone: 859-283-1501. Fax: 859-283-7378. Web: www.aristechs-surfaces.com www.aristechs-surfaces.com. Email info@aristechs-surfaces.com.
- B. Substitutions: Not permitted.

2.2 ACRYLIC SOLID SURFACE MATERIAL

- A. Material: Non-porous, homogeneous material maintaining the same composition throughout the part with a composition of acrylic polymer, aluminum trihydrate filler and pigment.
- B. Avonite 100% Acrylic Class 1 Solid Surfacing:
 - 1. Sheet Size: As indicated on Drawings
 - 2. Finish: Satin
 - 3. Thickness: 1/2 inch: Window sill with 1" built up bullnose and 2" apron
Bathroom counter with 1" built up bullnose & 4" backsplash, 2 sides
Wardrobe counter with 1" built up bullnose & 4" backsplash, backwall
Cubby Counter with 1" built up bullnose & 2" apron
Half wall Cap with 1" built up bullnose & 2" apron
 - 4. Color: Palermo
 - 5. Adhesive: Avonite Solid Surface Adhesive
 - 6. Substrate: At window sills;
Provide level wonder board substrate over existing wood sill prior to application
Of solid surface

2.3 MISCELLANEOUS

- A. Silicone Sealant: Mildew-resistant, FDA-compliant sealant recommended by manufacturer. Provide bead of white silicon sealant at exposed material transitions.
- B. Coordinate location of sinks and plumbing and provide required openings. Cutouts for sinks shall be smooth and uniform without saw marks. The top and bottom of openings shall be finished smooth.
- C. Maintain minimum 1/4-inch radius for sink cutouts.
- D. Finished edges shall have a 1/16-inch radius
- E. Fabricate material in accordance with the Avonite Fabrication Guide.

PART 3 – EXECUTION

3.1 PREPARATION

- A. Clean surfaces thoroughly prior to installation.

- B. Prepare surfaces using the methods recommended by the manufacturer for achieving the best result for the substrate under the project conditions.

3.2 INSTALLATION

- A. Install in accordance with manufacturer's instructions and recommendations.
- B. Install components plumb and level, in accordance with approved shop drawings, project installation details and manufacturer's printed instructions.
- C. Form joints using manufacturer's approved adhesive, with joints inconspicuous in finished work.
- D. Cure countertops for 24 hours, minimum, before exposure to moisture or pressure.
- E. Form 1/8 inch-wide corner joints, sealed with manufacturer's color-matching silicone sealant.
- F. Field cut countertop as required for plumbing fixtures and bath accessories.
- G. Adhere under mounted sinks to countertop using manufacturer's recommended adhesive.
- H. Adhere top mounted sinks to countertop using manufacturer's recommended adhesive/sealant.
- I. Provide backsplashes and end splashes as indicated on the Drawings.
Adhere to countertops using manufacturer's recommended silicone sealant.
- J. Field joints shall be hard seamed.
- K. Attach solid surfaces material to leveled supports on frame with dabs of silicone every 18 to 24 inches.
- L. Fasten solid surface material to frame by anchoring screws to supports at all corner blocks.
Screws should not come in contact with solid surface material, as this may cause cracking of countertop.

3.3 PROTECTION

- A. Protect installed products until completion of project.
- B. Touch-up, repair or replace damaged products before Substantial Completion.

END OF SECTION

SECTION 09260-GYPSUM BOARD ASSEMBLIES

PART 1- GENERAL

1.1 SUMMARY

- A. Provide gypsum board at renovated walls, where new blocking has been installed, and at shower room walls.

1.2 SUBMITTALS

- A. Product Data: Submit manufacturer's product data and installation instructions for each material and product used.

1.3 QUALITY ASSURANCE

- A. Comply with governing codes and regulations. Provide products of acceptable manufacturers, which have been in satisfactory use in similar service for three years. Use experienced installers. Deliver, handle, and store materials in accordance with manufacturer's instructions.
- B. Tolerances: Not more than 1/16-inch difference in true plane at joints between adjacent boards before finishing. After finishing, joints shall be not be visible. Not more than 1/8 inch in 10 feet deviation from true plane, plumb, level and proper relation to adjacent surfaces in finished work.

PART 2- PRODUCTS

2.1 MATERIALS

- A. Gypsum Board
 - 1. At repair walls: Defective interior walls or where new blocking has been installed.
 - 2. Water resist: Cementitious backer board at shower for application of ceramic tile.
Install as substrate for level solid surface window sills.
Provide as substrate to shower base, if needed
 - 3. Type: Repair: 5/8" non-rated board for tape and joint compound finish.
Water resist: 5/8" Durock cement board and tape by USG
5/8" Wonderboard also acceptable.
 - 4. Joint Treatment: ASTM C474 and ASTM C840, 3-coat system, paper or fiberglass tape.
 - 5. Auxiliary Materials:
 - a. Cornerbeads and edge trim to match existing.
 - b. Fastening adhesive recommended by manufacturer
 - c. Apply Red Gard waterproofing to cementitious board.

PART 3- EXECUTION

3.1 INSTALLATION

- A. Steel Framing: Install steel framing in compliance with ASTM C 754. Install with tolerances necessary to produce substrate for gypsum board assemblies with tolerances specified.
- B. Include blocking for items such as railings, grab bars, casework, toilet accessories, window treatment and similar items.

- C. Tape and Joint Compound: Install gypsum board for tape and 3-coat joint compound finish in compliance with ASTM C 840 and GA 216, Level 4 finish. Install gypsum board assemblies true, plumb, level and in proper relation to adjacent surfaces.
- D. Do not allow butt-to-butt joints and joints that do not fall over framing members.
- E. Where new partitions meet existing construction, remove existing corner beads to provide a smooth transition.
- F. Provide acoustic insulation in thickness indicated at ceiling assembly where indicated.
- G. Provide acoustical sealant where indicated in specifications.
- H. Install trim in strict compliance with manufacturer's instructions and recommendations.
- I. Repair surface defects. Leave ready for finish painting or wall treatment.

END OF SECTION

SECTION 09300- CERAMIC TILE

PART 1- GENERAL

1.1 SUMMARY

- A. Provide floor tile where indicated on improvement plans.

1.2 SUBMITTALS

- A. Product Data: Submit manufacturer's product data and installation instructions for each material and product used.
- B. Samples: Submit two representative samples of each material specified indicating visual characteristics and finish. Include range samples if variation of finish is anticipated.
- C. Submit extra stock equal to 2% of total used.

1.3 QUALITY ASSURANCE

- A. Comply with governing codes and regulations. Provide products of acceptable manufacturers, which have been in satisfactory use in similar service for three years. Use experienced installers. Deliver, handle, and store materials in accordance with manufacturer's instructions.
- B. Tile Setting Materials: ANSI A 118 series standard specifications.
- C. Tile Installation: ANSI 108 series standard specifications and Tile Council of America, Handbook for Ceramic Tile Installation.

PART 2- PRODUCTS

2.1 MATERIALS

- A. Floor Tile:
 - 1. Application: Floor tile over prepared existing floor substrate
Note: In areas with floor drains, Contractor shall provide spacer rings and/or surface cap to raise drain such that it is equal to top of tile.
 - 2. Size: 12" x 12" checkerboard pattern
 - 3. Manufacturer: Daltile
 - 4. Product line: Exquisite
 - 5. Model: EQW10 Ivory
 - 6. Grout: Polyblend polymer-modified, cement based grout
#386 Oyster Gray
 - 7. Sealer: Additive to grout mix
 - 8. Transition strip: Approved Schluter moulding
- B. Wall Tile:
 - 1. Application: Provide in bathroom shower
Note: Terminate with vertical transition strip at both wall locationsl, Shower wall tile shall wrap and include wall face between shower and cubby shelves. Provide schluter outside corner transition.
 - 2. Size: 24" x 12" vertical running, 1/3 staggered
 - 3. Manufacturer: Daltile

- 4. Product line : Exquisite
- 6. Grout: Polyblend polymer-modified, cement based grout
#386 Oyster Gray
- 7. Sealer: Additive to grout mix
- 8. Transition strip: Approved Schluter moulding

PART 3 EXECUTION

3.1 EXAMINATION

- A. Verify that wall surfaces are free of substances which would impair bonding of setting materials, smooth and flat within tolerances specified in ANSI A137.1.
- B. Verify that sub-floor surfaces are dust-free, and free of substances which would impair bonding of setting materials to sub-floor surfaces, and are smooth and flat within tolerances specified in ANSI A137.1.

3.2 PREPARATION

- A. Protect surrounding work from damage.
- B. Remove any curing compounds or other contaminants.
- C. Vacuum clean surfaces and damp clean.
- D. Seal substrate surface cracks with filler. Level existing substrate surfaces to acceptable flatness tolerances.
- F. Prepare substrate surfaces for adhesive installation in accordance with adhesive manufacturer's instructions.

3.3 INSTALLATION

- A. Install tile and grout in accordance with applicable requirements of ANSI A108.1 through A108.13, manufacturer's instructions, and TCA Handbook recommendations.
- B. Lay tile to pattern indicated. Arrange pattern so that a full tile or joint is centered on each wall and that no tile less than 1/2 width is used. Do not interrupt tile pattern through openings.
- C. Cut and fit tile to penetrations through tile, leaving sealant joint space. Form corners and bases neatly. Align floor joints.
- D. Place tile joints uniform in width, subject to variance in tolerance allowed in tile size. Make joints watertight, without voids, cracks, excess mortar, or excess grout.
- E. Form internal angles square and external angles bullnosed.

3.4 PROTECTION OF FINISHED WORK

- A. Do not permit traffic over finished floor surface for 72 hours after installation.
- B. Cover floors with kraft paper and protect from dirt and residue from other trades.
- C. Where floor will be exposed for prolonged periods protect as described in Section 01100

END OF SECTION

SECTION 09651 – CORNER GUARDS

PART 1 - GENERAL

1.1 SUMMARY

- A. Corner guard system for wall protection

1.2 DELIVERY, STORAGE AND HANDLING

- A. Provide Deliver materials in unopened factory packaging to the jobsite and store in original packaging in a climate controlled location away from direct sunlight.

1.3 WARRANTY

- A. Standard IPC Limited Lifetime Warranty against material and manufacturing defects.

PART 2 - EXECUTION

2.1 MANUFACTURER

- A. Acceptable Manufacturer:

IPC Door and Wall Protection
Systems, InPro Corporation, PO Box 406 Muskego, WI
53150 USA; Telephone: 800.222.5556, Fax: 888.715.8407,
www.inprocorp.com

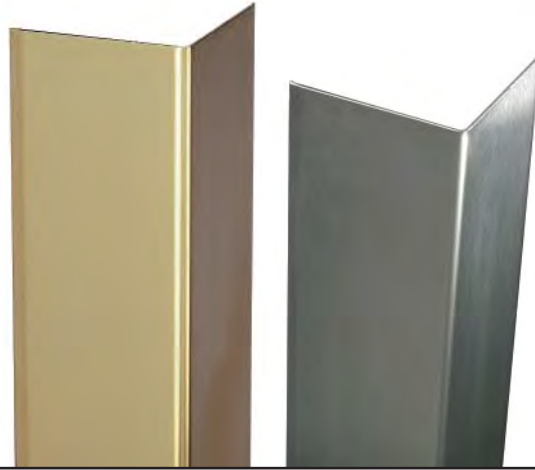
- B. Substitutions: Basis of quality must be met
- C. Provide all corner guards and wall protection from a single source.
- D. Stainless Steel Profile:
 - 1 1/2" (38mm) wing
 - 4' (2.44m) standard height
 - standard 16-gauge

| Model, | Size, | Attachment Method, | Grade | Thickness |
|--------------|-----------------|---------------------|--------|-----------|
| 181128C-304, | 1 1/2" " x 48", | (1/8 rad) cement on | 304 SS | 16 ga |

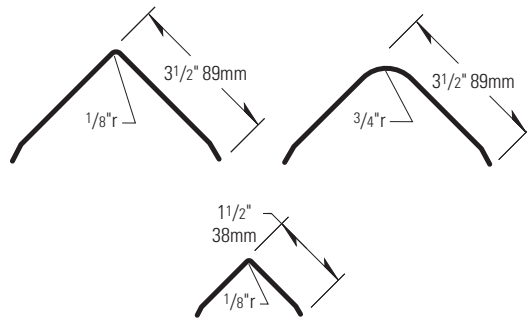
END OF SECTION

Stainless Steel

Corner Guards



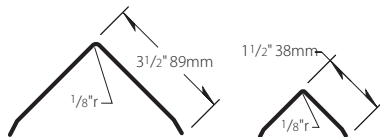
Stainless Steel



Stainless Steel

- Provides 3 1/2" (89mm) wing, 1 1/2" (38mm) wing. Custom wing sizes and angles also available
- Manufactured in 4' (1.22m) and 8' (2.44m) standard heights, custom heights available
- Standard Type 430 available in standard 16-gauge, also available in 14- and 18-gauge
- Standard Type 304 (Meets NSF Standard 51) available in 16-gauge, also available in 14-gauge
- Available in No. 4 Satin Finish

Gold Titanium Stainless Steel



Gold Titanium (Custom)

- Provides 3 1/2" (89mm) and 1 1/2" (38mm) wings
- Manufactured in custom heights only
- Standard Type 304, 18-gauge available
- Available in Gold Titanium, Mirror Finish

IPC.438/REV.9

SECTION 09653- RESILIENT BASE

PART 1- GENERAL

1.1 SUMMARY

- A. Provide resilient wall base as shown on drawings & finish schedules.

1.2 SUBMITTALS

- A. Product Data: Submit manufacturer's product data, color selection, and installation instructions for each material and product used.
- B. Submit extra stock equal to 2% of total used.

1.3 QUALITY ASSURANCE

- A. Comply with governing codes and regulations. Provide products of acceptable manufacturers, which have been in satisfactory use in similar service for three years. Use experienced installers. Deliver, handle, and store materials in accordance with manufacturer's instructions.
- B. Performance: Fire performance meeting requirements of building code and local authorities.

PART 2- PRODUCTS

2.1 MATERIALS

- A. 4" Resilient Wall Base:
 - 1. Standard: ASTM F 1861.
 - 2. Type: TP (thermoplastic rubber).
 - 3. Group: I (solid, homogeneous)
 - 4. Style: Cove.
 - 5. Thickness: 0.125 inch
 - 6. Height: 4 inches
 - 7. Color: Espresso-132 or Chocolate
 - 8. Manufacturer: Johnsonite or Flexco

PART 3- EXECUTION

3.1 INSTALLATION

- A. Comply with manufacturer's instructions and recommendations.
Install in proper relation to adjacent work.
- B. Install base and accessories to minimize joints.
Install base with joints as far from corners as practical.
- C. Clean, polish, and protect.

END OF SECTION

SECTION 09910- PAINTS

PART 1- GENERAL

1.1 SUMMARY

- A. Provide painting and surface preparation as indicated on renovation drawings.

1.2 SUBMITTALS

- A. Product Data: Submit manufacturer's product data and installation instructions for each material and product used.
- B. Samples: Submit two representative samples of each material specified indicating visual characteristics and finish. Include range samples if variation of finish is anticipated.
 - 1. Include manufacturer's full range of color and finish options
- C. Extra Stock: Submit 1 unopened gallon of each paint and color used in the project.

1.3 QUALITY ASSURANCE

- A. Comply with governing codes and regulations. Provide products of acceptable manufacturers, which have been in satisfactory use in similar service for three years. Use experienced installers. Deliver, handle, and store materials in accordance with manufacturer's instructions.
- B. Regulations: Compliance with VOC and environmental regulations.

PART 2- PRODUCTS

2.1 MATERIALS

- A. Painting:
 - 1. Application: Interior unfinished surfaces.
 - 2. Primary Coating Type: Low VOC paints.
 - 3. Primary Paint Systems: Primer plus two finish coats.
 - 4. Colors to be selected by Owner
 - 5. Approved Manufacturers: Sherwin Williams (listed)
Benjamin Moore

PART 3- EXECUTION

3.1 INSTALLATION

- A. Inspect surfaces, report unsatisfactory conditions in writing; beginning work means acceptance of substrate.
- B. Comply with manufacturer's instructions and recommendations for preparation, priming and coating work. Coordinate with work of other sections.
- C. At existing areas to be repainted, remove blistered or peeling paint to sound substrates. Remove chalk deposits and mildew and wash all surfaces with mild detergent. Perform related minor preparation including caulk and glazing compounds. Spot prime bare areas before priming and painting as specified.

- D. Match approved mock-ups for color, texture, and pattern. Re-coat or remove and replace work which does not match or shows loss of adhesion. Clean up, touch up and protect work.
- E. Inspect areas to receive paint, appropriately mask off and protect surface mounted items including but not limited to thermostats, sprinkler heads, fire horns, and smoke detectors.

3.2 PAINT SCHEDULE

- A. Gypsum Drywall Walls and Ceilings:
 - 1. Sherwin Williams Pro Mar 400 latex semi-gloss: 2 coats over 1 coat of Sherwin Williams High Holdout latex wall primer.
 - 2. Contractor shall account for a separate accent color for each unit (Sleeping room window wall)
- B. Doors and frame (Bath Door):
 - 1. Sherwin Williams Pro Mar 400 latex semi-gloss: 2 coats over factory applied primer or prepped existing frames. Color to match previously renovated units.
- C. Doors (Entry Door):
 - 1. Gelcoat: Match product used in previous remodels. Color to match previously renovated units.
- D. Entry Door Metal frame:
 - 1. Sherwin Williams DTM Alkyd: Two coats over factory applied primer or prepped existing frames. Color to match previously renovated units.

END OF SECTION

SECTION 10820- BATH ACCESSORIES

PART 1 GENERAL

1.1 SECTION REQUIREMENT

- A. Section Includes:
 - 1. Bathroom Accessories

1.3 DELIVERY, STORAGE AND HANDLING

- A. Deliver, store, and handle products in accordance with Section 01600 – Product Requirements. Deliver in original, unopened packaging. Store in dry location. Handle to prevent damage.

1.4 WARRANTY

- A. Mirrors: Furnish manufacturer's 15 year limited warranty against silver spoilage for first quality glass mirrors which are triple-silvered and electro-copper plated with baked enamel backing.

PART 2 – PRODUCTS

2.1 MIRRORS

- A. ADA Tilt Mirror:
 - Company: Bobrick 293 Series, Satin Finish
 - Size: 24"w x 36"h B-293-2436
 - Frame: 18-8, type 304, heavy-gauge stainless steel, 3/4" x 3/4" angle with vertical-grain satin finish. One piece, rollformed construction with continuous integral stiffener on all sides. Galvanized steel back is fastened to frame with concealed screws and equipped with integral horizontal hanging brackets near the top and bottom of the mirror for hanging the mirror and to prevent the mirror from pulling away from the wall frame.
 - Wall Frame: 18-8, type 304, heavy-gauge stainless steel with satin finish. Tapers from 4-3/8" depth at top to 1-5/16" depth at bottom. Wall Frame furnished with tumbler lock to secure mirror to wall frame.
 - Mirror: No. 1 quality, 1/4" select float glass, electrolytically copper-plated by the galvanic process, guaranteed for 15 years against silver spoilage. All edges are polished and protected by plastic filler strips; back is protected by full-size, shock-absorbing, water-resistant, nonabrasive, 1/8" thick polystyrene padding.
 - Approved Alternate:
 - Company: Ketcham FTM Series
 - Size: 24"w x 36"h FTM-2436
- B. Bathroom Mirror:
 - Size: 30"w x 36"h; frameless
 - Secured: Surface mount, Fully Adhered, using approved adhesive
 - Mirror: No. 1 quality, 1/4" select float glass, guaranteed for 15 years against silver spoilage. All outside face edges to be beveled and polished; thermoset paint backing. Manufactured in accordance with ASTM C 1036 and ASTM C 1503.
- C. Wardrobe Mirror:
 - Size: Height to match replaced mirror, field measure for widest possible width
 - Secured: Surface mount, Fully Adhered, using approved adhesive

Mirror: No. 1 quality, 1/4" select float glass, guaranteed for 15 years against silver spoilage. All outside face edges to be beveled and polished; thermoset paint backing. Manufactured in accordance with ASTM C 1036 and ASTM C 1503.

2.2 GRAB BARS

- A. Company: Bobrick 5806 Series, Satin Finish
Grab Bar: 18-8, type-304, 18-gauge stainless steel tubing with satin-finish. 1-1/4" outside diameter. Ends are welded to conceal mounting flanges. Clearance between the grab bar and wall is 1-1/2".
Mount: 18-8, type-304, 11-gauge thick, stainless steel plate; concealed. End flanges are 2" x 3-1/8" with holes for attachment to wall.
Covers: 18-8, type-304, 22-gauge drawn stainless steel with satin-finish. 3-1/4" diameter x 5/8" deep. Snaps over mounting flange to conceal mounting screws.

ADA Toilet Grab Bars: (refer to drawings)

B-5806 X 18: 18" vertical bar at side wall of toilet

B-5806 X 36: 36" horizontal bar at back of toilet

B-5806 X 42: 42" horizontal bar at side wall of toilet

ADA Roll In Shower Grab Bars: (refer to drawings)

B-5806 X 24: 24" horizontal bar side wall opposite seat

B-5806 X 36: 36" horizontal bar at control wall

2.3 ADA ROLL IN SEAT:

- A. Company: Bobrick 5191 Series, Satin Finish
Seat: One-piece, 5/16" thick, solidly fused plastic laminate with matte-finish melamine surfaces, ivory-colored face sheets and bonded black phenolic-resin core. Integral slots for water drainage. Secured to frame with stainless steel carriage bolts and acorn nuts.
Frame: 18-8, type-304, stainless steel with satin finish. 16-gauge 1-1/4" square tubing and 18 gauge 1" diameter seamless tubing.
Mount: 18-8, type-304, 3/16" thick stainless steel with satin finish. 3" diameter with three mounting screw holes.
Baseplate: 18-8, type-304, heavy-gauge stainless steel.
Spring: 17-7, type-301, 24-gauge stainless steel. Spot-welded to baseplate.
Bracket: 18-8, type-304, 16-gauge stainless steel with satin finish.

PART 3 EXECUTION

3.1 EXAMINATION

- A. Verify substrates and blocking for attachment of wall-mounted accessories are ready for installation of accessories.

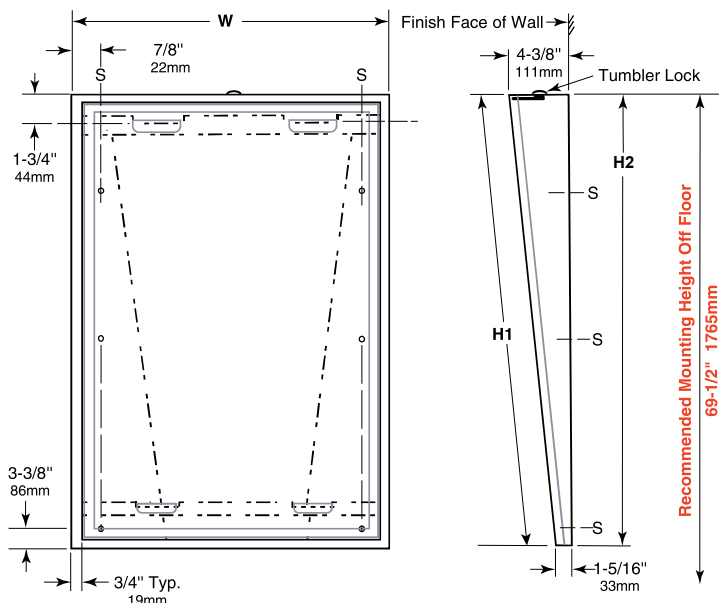
3.2 INSTALLATION

- A. Install accessories in accordance with manufacturer's instruction. Install plumb, level, and rigidly anchored to substrates.
- B. Where drawings or Schedule require barrier-free accessibility, install accessories in accordance with applicable regulations.

3.3 ADJUSTING AND CLEANING

- A. Protect accessories from damage due to construction. Remove protective coverings when no longer required.
- B. Test accessories and adjust for proper operation.
- C. Clean exposed surfaces.

END OF SECTION



STANDARD STOCK SIZES

| MODEL NO. | MIRROR SIZE | | OVERALL SIZE | |
|------------|-------------|------------|--------------|-----------------|
| | W | H1 | W | H2 |
| B-293 1830 | 18" (46cm) | 30" (76cm) | 18" (46cm) | 30-3/16" (77cm) |
| B-293 1836 | 18" (46cm) | 36" (91cm) | 18" (46cm) | 36-3/16" (92cm) |
| B-293 2436 | 24" (61cm) | 36" (91cm) | 24" (61cm) | 36-3/16" (92cm) |

Other sizes up to 40" x 40" (101 x 122cm) or 48" x 36" (122 x 91cm) are available on special order; minimum size available, 16" x 24" (41 x 61cm). Design not as shown

MATERIALS:

Mirror Frame — 18-8, type 304, heavy-gauge stainless steel, 3/4" x 3/4" (19 x 19mm) angle with vertical-grain satin finish. One piece, roll-formed construction forms continuous integral stiffener on all sides. Bevel design on front of angle holds frame tightly against mirror. Corners of mirror frame are heliarc welded, ground and polish smooth. Galvanized steel back is fastened to frame with concealed screws and equipped with integral horizontal hanging brackets near the top and bottom of the mirror for hanging the mirror and to prevent the mirror from pulling away from the wall frame.

Wall Frame — 18-8, type 304, heavy-gauge stainless steel with satin finish. Tapers from 4-3/8" (111mm) depth at top to 1-5/16" (33mm) depth at bottom. Wall Frame furnished with tumbler lock to secure mirror to wall frame.

Designer's Note: Type 304 stainless steel provides superior corrosion resistance, compared to 400 Series stainless steel, against environmental moisture, hose-down maintenance and strong cleaning solutions.

Mirror — No. 1 quality, 1/4" (6mm) select float glass, selected for silvering; electrolytically copper-plated by the galvanic process, guaranteed for 15 years against silver spoilage. All edges are polished and protected by plastic filler strips; back is protected by full-size, shock-absorbing, water-resistant, nonabrasive, 1/8" (3mm) thick polystyrene padding.

OPERATION:

Mirror is designed to provide full visibility for wheelchair patients in hospitals and nursing homes.

INSTALLATION:

For complete installation instructions please follow 293-69 installation instruction sheet.

SPECIFICATION:

Tilt mirror assembly shall consist of a mirror and a separate wall frame with built-in wall hanger. Wall frame furnished with tumbler lock for securing mirror to wall frame. Tilt mirror frame shall be type 304 stainless steel with beveled front to hold frame tightly against mirror; corners shall be welded, ground, and polished smooth. Wall frame shall be type 304 stainless steel designed with horizontal locking bars to secure mirror to wall frame. All exposed surfaces shall have satin finish with vertical grain. Select float glass mirror shall be guaranteed for 15 years against silver spoilage. All edges shall be protected by plastic filler strips. Back shall be protected by full-size, shock-absorbing, water-resistant, nonabrasive, 1/8" (3mm) thick polystyrene padding.

Tilt Mirror shall be Model B-293 _____ (insert width and height) of Bobrick Washroom Equipment, Inc., Clifton Park, New York; Jackson, Tennessee; Los Angeles, California; Bobrick Washroom Equipment Company, Scarborough, Ontario; Bobrick Washroom Equipment Pty. Ltd., Australia; and Bobrick Washroom Equipment Limited, United Kingdom.

FTM Series

Fixed Tilt Mirror



Model FTM-2430



Wall Mounted Data

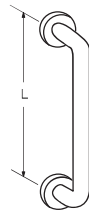
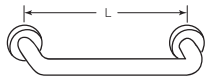
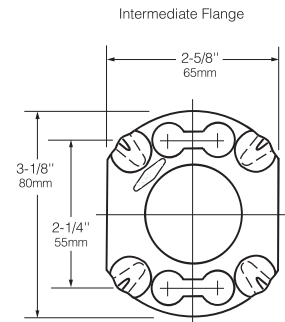
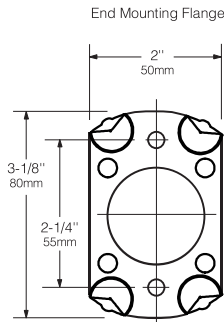
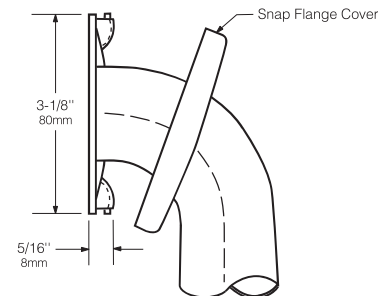
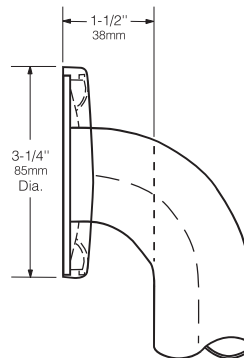
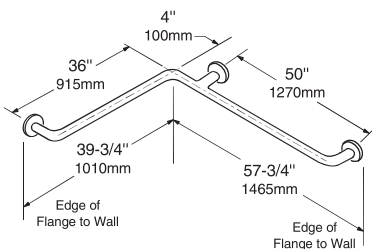
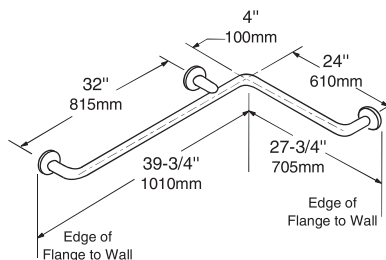
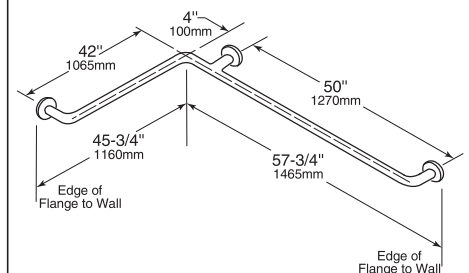
| Stainless Steel Frame | Overall Size W x H |
|-----------------------|--------------------|
| FTM-1630 | 16" x 30" |
| FTM-1824 | 18" x 24" |
| FTM-1836 | 18" x 36" |
| FTM-2430 | 24" x 30" |
| FTM-2436 | 24" x 36" |

Features: Heavy duty satin stainless steel mirror for use in accessible applications. Ideal for commercial or public restrooms.

Specifications: 20 gauge type 304 heavy gauge stainless steel with satin finish. 3/16" # 1 quality electrocopper plated plat glass mirror. Galvanized steel backplate, fully welded and smooth edges for a seamless finish. Four slotted mounting holes complete with standard hardware with integral screw head lock. Mirror frame tapers from 4" tilt on top of mirror to 1"

BOBRICK**Technical Data****1 1/4" (32mm) DIAMETER
STAINLESS STEEL GRAB BARS
WITH SNAP FLANGE****B-5806
SERIES**

- Specify Finish Required: ☐ **Satin-finish, slip-resistant surface.**
☐ Peened surface; add suffix .99 to model number

**HORIZONTAL****VERTICAL****B-5806 x 18, 24, 30, 36, 42, 48****TWO-WALL
TUB / SHOWER
COMPARTMENT BAR****B-5837****HORIZONTAL
TUB / SHOWER
COMPARTMENT BAR 24 x 36****B-58616****TWO-WALL
TOILET COMPARTMENT BAR 42 x 54****B-5897**

continued . . .

MATERIALS:

Grab Bar — 18-8, Type-304, 18-gauge (1.2mm) stainless steel tubing with a satin-finish, slip-resistant surface. 1-1/4" (32mm) outside diameter. Ends are heliarc welded to concealed mounting flanges. Clearance between the grab bar and wall is 1-1/2" (38mm).

Concealed Mounting Flanges — 18-8, Type-304, 11-gauge (3.2mm) thick, stainless steel plate; end flanges 2" x 3-1/8" (50 x 80mm) with holes for attachment to wall. Intermediate flanges 2-5/8" x 3-1/8" (65 x 80mm) wide x 3-1/8" (80mm) diameter.

Snap Flange Covers — 18-8, Type-304, 22-gauge (0.8mm) drawn stainless steel with satin-finish. 3-1/4" (85mm) diameter x 5/8" (16mm) deep. Each cover snaps over mounting flange to conceal mounting screws.

STRENGTH:

Bobrick grab bars that provide 1-1/2" (38mm) clearance from wall can support loads in excess of 900 pounds (408kg) if properly installed. Other grab bar configurations can support loads in excess of 250 pounds (113kg) if properly installed, complying with accessible design (including ADAAG in the U.S.A.) for structural strength.

Safety Warning: Grab bars are no stronger than the anchors and walls to which they are attached and, therefore, must be firmly secured in order to support the loads for which they are intended. To avoid potential injury, the building owner or maintenance personnel should remove the grab bar from service if the grab bar is not adequately secured to wall or if there is any observed damage to the welds.

INSTALLATION:

Provide concealed anchor device or backing as specified or required in accordance with local building codes before wall is finished. Fasten concealed mounting flanges to anchor device or backing with at least two screws opposing each other in each flange. Snap flange covers over each mounting flange to conceal mounting screws. Concealed anchor devices and mounting screws are not included with Bobrick grab bars and must be specified as an accessory.

For Grab Bars with an Intermediate Flange(s), Pull Snap-Flange Covers away from mounting flanges. Place grab bar in desired mounting location. Use intermediate flange as a template to mark location of mounting screws at intermediate flange only. Mark screw locations at the center of the slot in the middle of the double-keyhole shaped mounting holes (2) in the intermediate flange. Remove grab bar from wall. Drive the intermediate flange mounting screws into wall at marked locations. **Note:** Make sure to leave a space of just over 1/8" (3.17mm) between the underside of the screw head and the wall. Install grab bar on the wall by placing the round ends of the intermediate flange double-keyhole shaped mounting holes over the mounting screws (2) are located in the middle of the flange slots. Install the mounting screws into the wall at the end flanges and secure tightly. Tighten the mounting screws at the intermediate flange. Press all snap-flange covers into place to conceal mounting flanges.

Note: Recommend use of 1/4" or #14 sheet metal or wood screws to install Intermediate Flange. #12 screws may also be used.

Important Notes:

1. **Mounting Kits** — Bobrick offers a mounting kit for installing grab bars; **one Bobrick mounting kit is required for each flange.**

| Mounting Kit No. | Description |
|------------------|---|
| 252-30 | Consists of (3) #14 x 2 1/2" Type-304 stainless steel, Phillips round-head, sheet-metal screws. |

2. **Grab Bar Fastener** — Bobrick offers a grab bar fastening system that secures all Bobrick grab bar series; **one Bobrick fastener is required for each flange.** Install grab bar without backing in wall requires minimum 5/8" (16mm) thick painted or tiled drywall.

| WingIt™ Fastener No. | Description |
|----------------------|---|
| 251-4 | Consists of 10–32 x 5/16" round-head, Phillips 18/8 stainless steel screws. (1) WingIt grab bar fastener. |

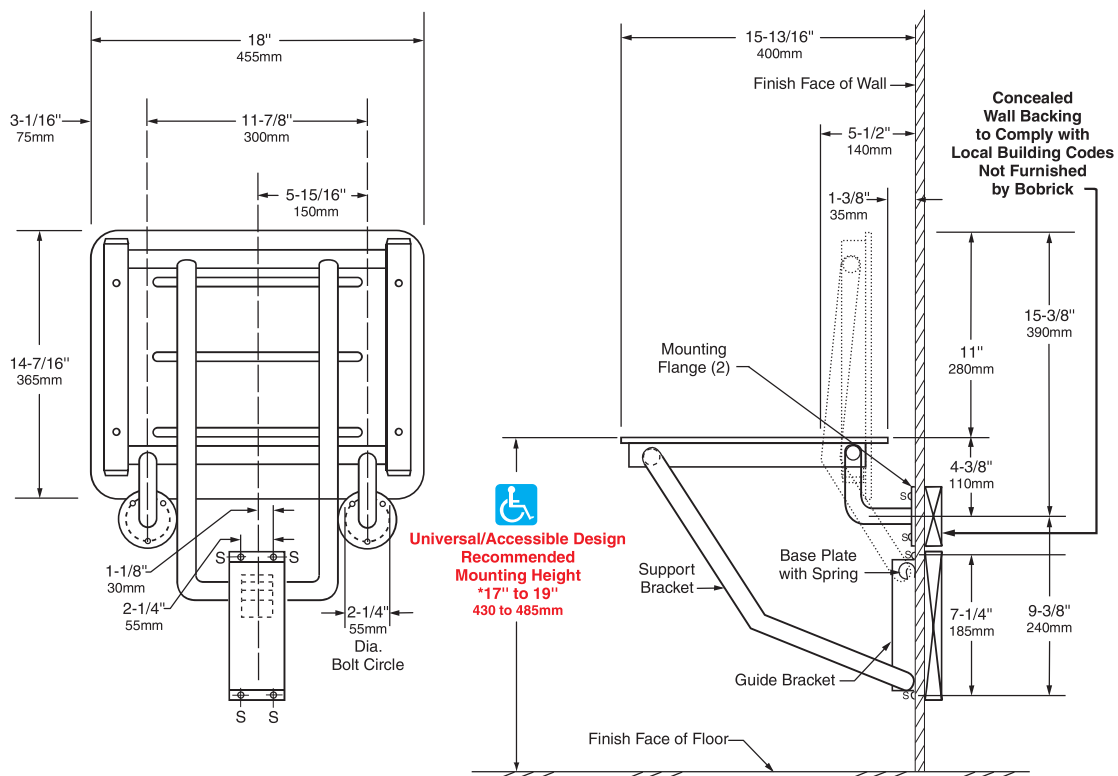
3. **Optional Anchor Device** — Bobrick grab bar anchor device includes stainless steel machine screws to be used for attaching grab bars to anchors. **one Bobrick concealed anchor device is required for each flange.**

| Optional Anchor No. | Description |
|---------------------|---|
| 2583 | Anchor for 3/4" to 1" (19-25mm) panel 1 anchor required for each flange. |
| 2586 | Anchor for 1/2" to 1" (13mm) panel 1 anchor required for each flange. |

SPECIFICATION:

Grab bar shall be Type-304 stainless steel with a satin-finish, slip-resistant surface. Grab bar shall have 18-gauge (1.2mm) wall thickness and 1-1/4" (32mm) outside diameter. Clearance between the grab bar and wall shall be 1-1/2" (38mm). Concealed mounting flanges shall be 11-gauge (3.2 mm) thick stainless steel plate, 2" x 3-1/8" (50 x 80mm), and equipped with at least two screw holes for attachment to wall. Flange covers shall be 22-gauge (0.8mm) stainless steel, 3-1/4" (85mm) diameter, and shall snap over mounting flanges to conceal mounting screws and/or WingIt fasteners. Ends of grab bar shall pass through concealed mounting flanges and be heliarc welded to form one structural unit. Grab bar shall comply with accessible design (including ADAAG in the U.S.A.) for structural strength.

Grab Bar shall be Model _____ (insert model number) of Bobrick Washroom Equipment, Inc., Clifton Park, New York; Jackson, Tennessee; and Los Angeles, California; Bobrick Washroom Equipment Company, Scarborough, Ontario; Bobrick Washroom Equipment Pty. Ltd., Australia; and Bobrick Washroom Equipment Limited, United Kingdom.



MATERIALS:

Seat — One-piece, 5/16" (8mm) thick, solidly fused plastic laminate with matte-finish melamine surfaces, ivory-colored face sheets, and black phenolic-resin core that are integrally bonded — cannot delaminate. Integral slots for water drainage. Secured to frame with stainless steel carriage bolts and acorn nuts.

Frame — 18-8, type-304, stainless steel with satin finish. 16-gauge (1.6mm), 1-1/4" (30mm) square tubing and 18-gauge (1.2mm), 1" (25mm) diameter seamless tubing.

Mounting Flanges (2) — 18-8, type-304, 3/16" (5mm) thick stainless steel with satin finish. 3" (75mm) diameter with three mounting screw holes.

Baseplate — 18-8, type-304, heavy-gauge stainless steel.

Spring — 17-7, type-301, 24-gauge (0.6mm) stainless steel. Spot-welded to baseplate.

Guide Bracket — 18-8, type-304, 16-gauge (1.6mm) stainless steel with satin finish.

continued . . .

OPERATION:

Shower seat can be folded up against the wall when not in use. The spring at the top of baseplate locks seat into upright position until released by pulling the top of seat away from wall. Support system with guide bracket allows varying mounting heights and leaves floor clear for easier cleaning. Nonporous solid phenolic seat has slots to permit water to drain, does not splinter or require oiling, and will not support growth of bacteria. Slotless round-head carriage bolts and acorn nuts provide additional safety to user. Bobrick shower seats, when properly installed, have sufficient strength to support 500 lbs., (227 kg) complying with accessible design guidelines (including ADAAG in the U.S.A.).

INSTALLATION:

Secure unit to wall at points indicated by an S, with the two mounting flanges located at top and the baseplate and guide bracket below. The bottom of support bracket must be positioned between the baseplate and guide bracket before they are secured to wall or partition. Mounting height of shower seat must comply with local building codes.

For stud walls, provide concealed backing to comply with local building codes and secure with #14 x 2-1/2" (6.3 x 65mm) stainless steel sheet-metal screws furnished by manufacturer.

For prefabricated shower stalls, provide adequate backing by the shower stall manufacturer. Secure with #14 x 2-1/2" (6.3 x 65mm) stainless steel mounting screws furnished by manufacturer. Bobrick offers a mounting kit for installing shower seats. For additional mounting kits please order 252-30. One mounting kit is required for each flange.

For masonry walls, provide fiber plugs or expansion shields for use with furnished sheet-metal screws, or provide 1/4" (6mm) toggle bolts or expansion bolts.

INSTALL SAFETY PLATE TO WALL:

Safety Plate is to be mounted on wall near Shower Seat in order to properly advise users of the Seat's weight restrictions. Correct installation of the Safety Plate will ensure that the Shower Seat meets A.N.S.I. Standards.

Permanently affix Safety Plate to wall on either side of the Shower Seat at a minimum height of 30" (760mm). If mounted above Seat, the Plate must be high enough so that it is not covered when Seat is on the up position. Mounting screws (4) are recommended, but double-sided tape on rear of Plate may be used for very smooth, non-porous surfaces.

SAFETY WARNING: Shower seats are no stronger than the anchors and walls to which they are attached and must be firmly secured in order to support the loads for which they are intended. Consult and comply with local building codes. To avoid potential injury, the building owner or maintenance personnel should remove the shower seat from service if the shower seat is not adequately secured to the wall. Unit shall support static loads of up to 500 lbs (227 kg) when properly installed and used. To avoid potential seat malfunction, DO NOT use seat if weight exceeds 500 lbs (227 kg).

SPECIFICATION:

Folding shower seat shall have a frame constructed of type-304, satin-finish stainless steel that consists of 16-gauge (1.6mm), 1-1/4" (30mm) square tubing and 18-gauge (1.2mm), 1" (25mm) diameter seamless tubing. Seat shall be one-piece, 5/16" (8mm) thick, solidly fused plastic laminate with matte-finish melamine surfaces, ivory-colored face sheets, and black phenolic-resin core; secured to frame with stainless steel carriage bolts and acorn nuts. Shower seat shall be equipped with two 3" (75mm) diameter mounting flanges constructed of type-304, 3/16" (5mm) thick, satin-finish stainless steel; a guide bracket constructed of type-304, 16-gauge (1.6mm), satin-finish stainless steel; and a spring constructed of type-301, 24-gauge (0.6mm) stainless steel that is spot-welded to a baseplate of type-304, heavy-gauge stainless steel. Seat shall be able to lock in upright position when not in use. Shower seat shall comply with accessible design guidelines (including ADAAG in the U.S.A.).

Folding Shower Seat shall be Model B-5191 of Bobrick Washroom Equipment, Inc., Clifton Park, New York; Jackson, Tennessee; Los Angeles, California; Bobrick Washroom Equipment Company, Scarborough, Ontario; Bobrick Washroom Equipment Pty. Ltd., Australia; and Bobrick Washroom Equipment Limited, United Kingdom.

FTM Series

Fixed Tilt Mirror



Model FTM-2430



Wall Mounted Data

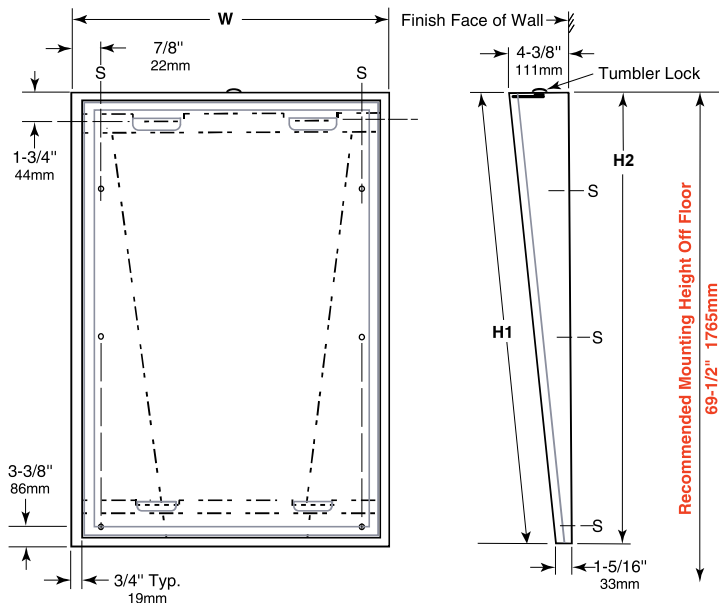
| Stainless Steel Frame | Overall Size W x H |
|-----------------------|--------------------|
| FTM-1630 | 16" x 30" |
| FTM-1824 | 18" x 24" |
| FTM-1836 | 18" x 36" |
| FTM-2430 | 24" x 30" |
| FTM-2436 | 24" x 36" |

Features: Heavy duty satin stainless steel mirror for use in accessible applications. Ideal for commercial or public restrooms.

Specifications: 20 gauge type 304 heavy gauge stainless steel with satin finish. 3/16" # 1 quality electrocopper plated plat glass mirror. Galvanized steel backplate, fully welded and smooth edges for a seamless finish. Four slotted mounting holes complete with standard hardware with integral screw head lock. Mirror frame tapers from 4" tilt on top of mirror to 1"

TILT MIRROR WITH STAINLESS STEEL FRAME

B-293 SERIES



STANDARD STOCK SIZES

| MODEL NO. | MIRROR SIZE | | OVERALL SIZE | |
|------------|-------------|------------|--------------|-----------------|
| | W | H1 | W | H2 |
| B-293 1830 | 18" (46cm) | 30" (76cm) | 18" (46cm) | 30-3/16" (77cm) |
| B-293 1836 | 18" (46cm) | 36" (91cm) | 18" (46cm) | 36-3/16" (92cm) |
| B-293 2436 | 24" (61cm) | 36" (91cm) | 24" (61cm) | 36-3/16" (92cm) |

Other sizes up to 40" x 40" (101 x 122cm) or 48" x 36" (122 x 91cm) are available on special order; minimum size available, 16" x 24" (41 x 61cm). Design not as shown

MATERIALS:

Mirror Frame — 18-8, type 304, heavy-gauge stainless steel, 3/4" x 3/4" (19 x 19mm) angle with vertical-grain satin finish. One piece, roll-formed construction forms continuous integral stiffener on all sides. Bevel design on front of angle holds frame tightly against mirror. Corners of mirror frame are heliarc welded, ground and polish smooth. Galvanized steel back is fastened to frame with concealed screws and equipped with integral horizontal hanging brackets near the top and bottom of the mirror for hanging the mirror and to prevent the mirror from pulling away from the wall frame.

Wall Frame — 18-8, type 304, heavy-gauge stainless steel with satin finish. Tapers from 4-3/8" (111mm) depth at top to 1-5/16" (33mm) depth at bottom. Wall Frame furnished with tumbler lock to secure mirror to wall frame.

Designer's Note: Type 304 stainless steel provides superior corrosion resistance, compared to 400 Series stainless steel, against environmental moisture, hose-down maintenance and strong cleaning solutions.

Mirror — No. 1 quality, 1/4" (6mm) select float glass, selected for silvering; electrolytically copper-plated by the galvanic process, guaranteed for 15 years against silver spoilage. All edges are polished and protected by plastic filler strips; back is protected by full-size, shock-absorbing, water-resistant, nonabrasive, 1/8" (3mm) thick polystyrene padding.

OPERATION:

Mirror is designed to provide full visibility for wheelchair patients in hospitals and nursing homes.

INSTALLATION:

For complete installation instructions please follow 293-69 installation instruction sheet.

SPECIFICATION:

Tilt mirror assembly shall consist of a mirror and a separate wall frame with built-in wall hanger. Wall frame furnished with tumbler lock for securing mirror to wall frame. Tilt mirror frame shall be type 304 stainless steel with beveled front to hold frame tightly against mirror; corners shall be welded, ground, and polished smooth. Wall frame shall be type 304 stainless steel designed with horizontal locking bars to secure mirror to wall frame. All exposed surfaces shall have satin finish with vertical grain. Select float glass mirror shall be guaranteed for 15 years against silver spoilage. All edges shall be protected by plastic filler strips. Back shall be protected by full-size, shock-absorbing, water-resistant, nonabrasive, 1/8" (3mm) thick polystyrene padding.

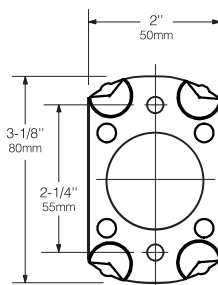
Tilt Mirror shall be Model B-293 _____ (insert width and height) of Bobrick Washroom Equipment, Inc., Clifton Park, New York; Jackson, Tennessee; Los Angeles, California; Bobrick Washroom Equipment Company, Scarborough, Ontario; Bobrick Washroom Equipment Pty. Ltd., Australia; and Bobrick Washroom Equipment Limited, United Kingdom.

BOBRICK**Technical Data****1 1/4" (32mm) DIAMETER
STAINLESS STEEL GRAB BARS
WITH SNAP FLANGE****B-5806
SERIES**

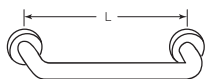
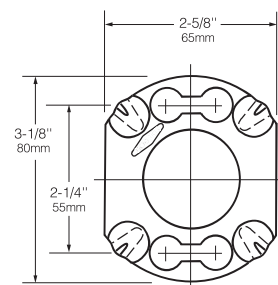
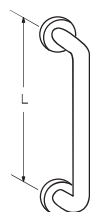
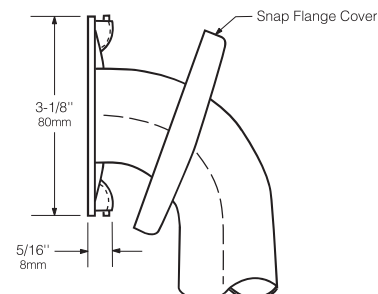
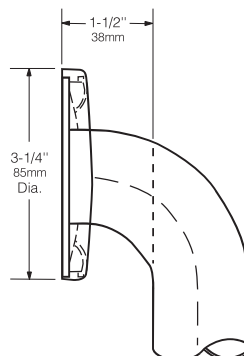
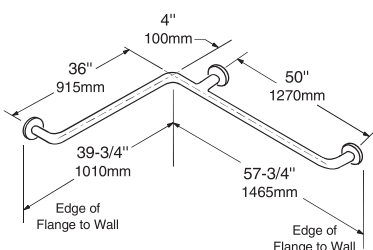
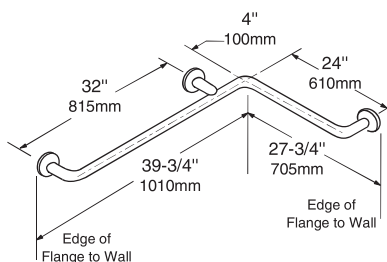
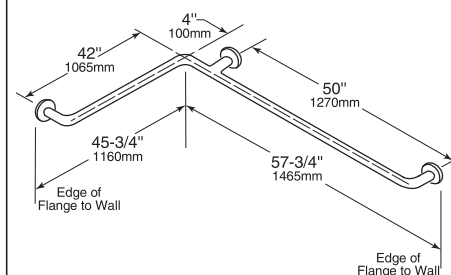
- Specify Finish Required: ☐ **Satin-finish, slip-resistant surface.**
☐ Peened surface; add suffix .99 to model number



End Mounting Flange



Intermediate Flange

**HORIZONTAL****VERTICAL****B-5806 x 18, 24, 30, 36, 42, 48****TWO-WALL
TUB / SHOWER
COMPARTMENT BAR****B-5837****HORIZONTAL
TUB / SHOWER
COMPARTMENT BAR 24 x 36****B-58616****TWO-WALL
TOILET COMPARTMENT BAR 42 x 54****B-5897**

continued . . .

MATERIALS:

Grab Bar — 18-8, Type-304, 18-gauge (1.2mm) stainless steel tubing with a satin-finish, slip-resistant surface. 1-1/4" (32mm) outside diameter. Ends are heliarc welded to concealed mounting flanges. Clearance between the grab bar and wall is 1-1/2" (38mm).

Concealed Mounting Flanges — 18-8, Type-304, 11-gauge (3.2mm) thick, stainless steel plate; end flanges 2" x 3-1/8" (50 x 80mm) with holes for attachment to wall. Intermediate flanges 2-5/8" x 3-1/8" (65 x 80mm) wide x 3-1/8" (80mm) diameter.

Snap Flange Covers — 18-8, Type-304, 22-gauge (0.8mm) drawn stainless steel with satin-finish. 3-1/4" (85mm) diameter x 5/8" (16mm) deep. Each cover snaps over mounting flange to conceal mounting screws.

STRENGTH:

Bobrick grab bars that provide 1-1/2" (38mm) clearance from wall can support loads in excess of 900 pounds (408kg) if properly installed. Other grab bar configurations can support loads in excess of 250 pounds (113kg) if properly installed, complying with accessible design (including ADAAG in the U.S.A.) for structural strength.

Safety Warning: Grab bars are no stronger than the anchors and walls to which they are attached and, therefore, must be firmly secured in order to support the loads for which they are intended. To avoid potential injury, the building owner or maintenance personnel should remove the grab bar from service if the grab bar is not adequately secured to wall or if there is any observed damage to the welds.

INSTALLATION:

Provide concealed anchor device or backing as specified or required in accordance with local building codes before wall is finished. Fasten concealed mounting flanges to anchor device or backing with at least two screws opposing each other in each flange. Snap flange covers over each mounting flange to conceal mounting screws. Concealed anchor devices and mounting screws are not included with Bobrick grab bars and must be specified as an accessory.

For Grab Bars with an Intermediate Flange(s), Pull Snap-Flange Covers away from mounting flanges. Place grab bar in desired mounting location. Use intermediate flange as a template to mark location of mounting screws at intermediate flange only. Mark screw locations at the center of the slot in the middle of the double-keyhole shaped mounting holes (2) in the intermediate flange. Remove grab bar from wall. Drive the intermediate flange mounting screws into wall at marked locations. **Note:** Make sure to leave a space of just over 1/8" (3.17mm) between the underside of the screw head and the wall. Install grab bar on the wall by placing the round ends of the intermediate flange double-keyhole shaped mounting holes over the mounting screws (2) are located in the middle of the flange slots. Install the mounting screws into the wall at the end flanges and secure tightly. Tighten the mounting screws at the intermediate flange. Press all snap-flange covers into place to conceal mounting flanges.

Note: Recommend use of 1/4" or #14 sheet metal or wood screws to install Intermediate Flange. #12 screws may also be used.

Important Notes:

1. **Mounting Kits** — Bobrick offers a mounting kit for installing grab bars; **one Bobrick mounting kit is required for each flange.**

| Mounting Kit No. | Description |
|------------------|---|
| 252-30 | Consists of (3) #14 x 2 1/2" Type-304 stainless steel, Phillips round-head, sheet-metal screws. |

2. **Grab Bar Fastener** — Bobrick offers a grab bar fastening system that secures all Bobrick grab bar series; **one Bobrick fastener is required for each flange.** Install grab bar without backing in wall requires minimum 5/8" (16mm) thick painted or tiled drywall.

| WingIt™ Fastener No. | Description |
|----------------------|---|
| 251-4 | Consists of 10–32 x 5/16" round-head, Phillips 18/8 stainless steel screws. (1) WingIt grab bar fastener. |

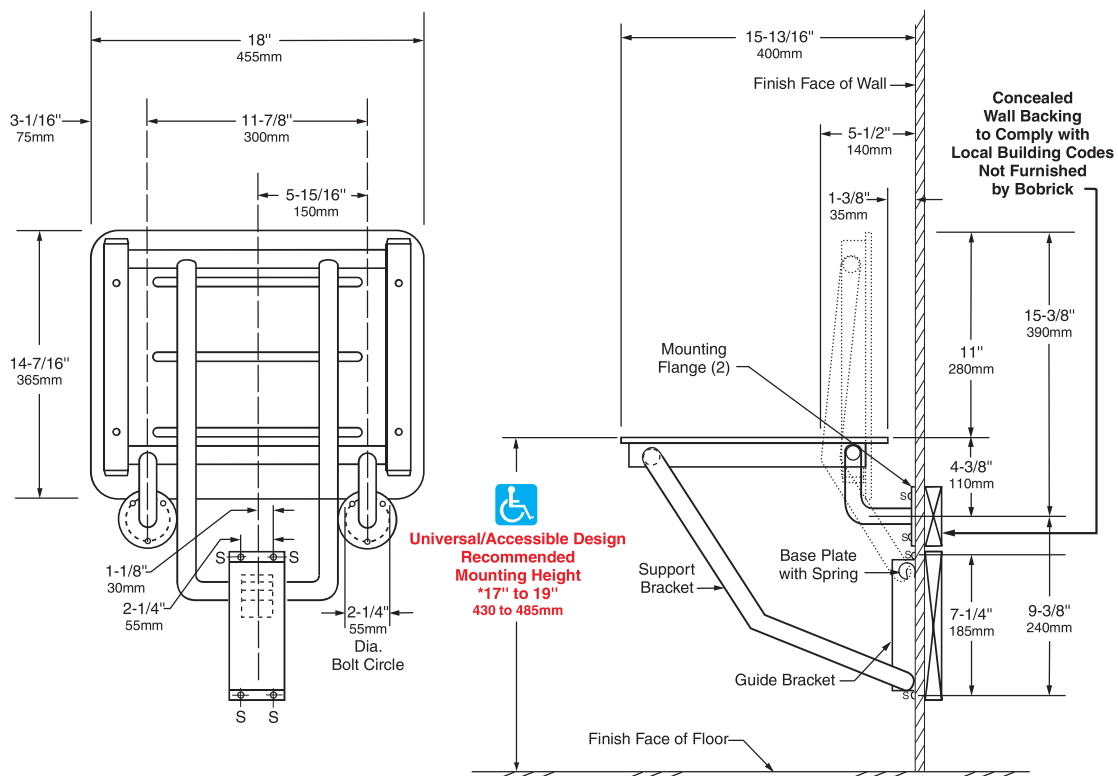
3. **Optional Anchor Device** — Bobrick grab bar anchor device includes stainless steel machine screws to be used for attaching grab bars to anchors. **one Bobrick concealed anchor device is required for each flange.**

| Optional Anchor No. | Description |
|---------------------|---|
| 2583 | Anchor for 3/4" to 1" (19-25mm) panel 1 anchor required for each flange. |
| 2586 | Anchor for 1/2" to 1" (13mm) panel 1 anchor required for each flange. |

SPECIFICATION:

Grab bar shall be Type-304 stainless steel with a satin-finish, slip-resistant surface. Grab bar shall have 18-gauge (1.2mm) wall thickness and 1-1/4" (32mm) outside diameter. Clearance between the grab bar and wall shall be 1-1/2" (38mm). Concealed mounting flanges shall be 11-gauge (3.2 mm) thick stainless steel plate, 2" x 3-1/8" (50 x 80mm), and equipped with at least two screw holes for attachment to wall. Flange covers shall be 22-gauge (0.8mm) stainless steel, 3-1/4" (85mm) diameter, and shall snap over mounting flanges to conceal mounting screws and/or WingIt fasteners. Ends of grab bar shall pass through concealed mounting flanges and be heliarc welded to form one structural unit. Grab bar shall comply with accessible design (including ADAAG in the U.S.A.) for structural strength.

Grab Bar shall be Model _____ (insert model number) of Bobrick Washroom Equipment, Inc., Clifton Park, New York; Jackson, Tennessee; and Los Angeles, California; Bobrick Washroom Equipment Company, Scarborough, Ontario; Bobrick Washroom Equipment Pty. Ltd., Australia; and Bobrick Washroom Equipment Limited, United Kingdom.



*Consult local building codes

MATERIALS:

Seat — One-piece, 5/16" (8mm) thick, solidly fused plastic laminate with matte-finish melamine surfaces, ivory-colored face sheets, and black phenolic-resin core that are integrally bonded — cannot delaminate. Integral slots for water drainage. Secured to frame with stainless steel carriage bolts and acorn nuts.

Frame — 18-8, type-304, stainless steel with satin finish. 16-gauge (1.6mm), 1-1/4" (30mm) square tubing and 18-gauge (1.2mm), 1" (25mm) diameter seamless tubing.

Mounting Flanges (2) — 18-8, type-304, 3/16" (5mm) thick stainless steel with satin finish. 3" (75mm) diameter with three mounting screw holes.

Baseplate — 18-8, type-304, heavy-gauge stainless steel.

Spring — 17-7, type-301, 24-gauge (0.6mm) stainless steel. Spot-welded to baseplate.

Guide Bracket — 18-8, type-304, 16-gauge (1.6mm) stainless steel with satin finish.

continued . . .

OPERATION:

Shower seat can be folded up against the wall when not in use. The spring at the top of baseplate locks seat into upright position until released by pulling the top of seat away from wall. Support system with guide bracket allows varying mounting heights and leaves floor clear for easier cleaning. Nonporous solid phenolic seat has slots to permit water to drain, does not splinter or require oiling, and will not support growth of bacteria. Slotless round-head carriage bolts and acorn nuts provide additional safety to user. Bobrick shower seats, when properly installed, have sufficient strength to support 500 lbs., (227 kg) complying with accessible design guidelines (including ADAAG in the U.S.A.).

INSTALLATION:

Secure unit to wall at points indicated by an S, with the two mounting flanges located at top and the baseplate and guide bracket below. The bottom of support bracket must be positioned between the baseplate and guide bracket before they are secured to wall or partition. Mounting height of shower seat must comply with local building codes.

For stud walls, provide concealed backing to comply with local building codes and secure with #14 x 2-1/2" (6.3 x 65mm) stainless steel sheet-metal screws furnished by manufacturer.

For prefabricated shower stalls, provide adequate backing by the shower stall manufacturer. Secure with #14 x 2-1/2" (6.3 x 65mm) stainless steel mounting screws furnished by manufacturer. Bobrick offers a mounting kit for installing shower seats. For additional mounting kits please order 252-30. One mounting kit is required for each flange.

For masonry walls, provide fiber plugs or expansion shields for use with furnished sheet-metal screws, or provide 1/4" (6mm) toggle bolts or expansion bolts.

INSTALL SAFETY PLATE TO WALL:

Safety Plate is to be mounted on wall near Shower Seat in order to properly advise users of the Seat's weight restrictions. Correct installation of the Safety Plate will ensure that the Shower Seat meets A.N.S.I. Standards.

Permanently affix Safety Plate to wall on either side of the Shower Seat at a minimum height of 30" (760mm). If mounted above Seat, the Plate must be high enough so that it is not covered when Seat is on the up position. Mounting screws (4) are recommended, but double-sided tape on rear of Plate may be used for very smooth, non-porous surfaces.

SAFETY WARNING: Shower seats are no stronger than the anchors and walls to which they are attached and must be firmly secured in order to support the loads for which they are intended. Consult and comply with local building codes. To avoid potential injury, the building owner or maintenance personnel should remove the shower seat from service if the shower seat is not adequately secured to the wall. Unit shall support static loads of up to 500 lbs (227 kg) when properly installed and used. To avoid potential seat malfunction, DO NOT use seat if weight exceeds 500 lbs (227 kg).

SPECIFICATION:

Folding shower seat shall have a frame constructed of type-304, satin-finish stainless steel that consists of 16-gauge (1.6mm), 1-1/4" (30mm) square tubing and 18-gauge (1.2mm), 1" (25mm) diameter seamless tubing. Seat shall be one-piece, 5/16" (8mm) thick, solidly fused plastic laminate with matte-finish melamine surfaces, ivory-colored face sheets, and black phenolic-resin core; secured to frame with stainless steel carriage bolts and acorn nuts. Shower seat shall be equipped with two 3" (75mm) diameter mounting flanges constructed of type-304, 3/16" (5mm) thick, satin-finish stainless steel; a guide bracket constructed of type-304, 16-gauge (1.6mm), satin-finish stainless steel; and a spring constructed of type-301, 24-gauge (0.6mm) stainless steel that is spot-welded to a baseplate of type-304, heavy-gauge stainless steel. Seat shall be able to lock in upright position when not in use. Shower seat shall comply with accessible design guidelines (including ADAAG in the U.S.A.).

Folding Shower Seat shall be Model B-5191 of Bobrick Washroom Equipment, Inc., Clifton Park, New York; Jackson, Tennessee; Los Angeles, California; Bobrick Washroom Equipment Company, Scarborough, Ontario; Bobrick Washroom Equipment Pty. Ltd., Australia; and Bobrick Washroom Equipment Limited, United Kingdom.

| CMC Sopris Hall Remodel - Light Schedule | | | | |
|--|-----------------------|--------|---------|--|
| Tag | Description | Manuf. | Model | Remarks |
| L1 | Ceiling Mounted Light | SATCO | 62-1054 | 1 in sleeping room |
| L2 | Ceiling Mounted Light | SATCO | 62-1051 | 1 between wardrobe closets, 1 over entry door, 2 in bathroom |
| | | | | |

| CMC Sopris Hall Remodel - Plumbing Schedule | | | | |
|---|----------------|-------------------|--|--|
| Tag | Description | Manuf. | Model | Remarks |
| P1 | Toilet | American Standard | Cadet Pro Elongated | Delta 77160A lever, ProFlo PFTSWE2001WH Seat |
| P2 | ADA Toilet | American Standard | Cadet Pro (3517A.101) | ADA, Delta 77160A lever, ProFlo PFTSWE2001WH Seat |
| P3 | Sink | American Standard | 0614.000.020 | |
| P4 | Faucet | Delta | 561-SS MPU-DST | Compel Collection |
| P5 | Sink | American Standard | 0614.000.020 | ADA compliant. If exposed pipes under sink, they must be insulated |
| P6 | Faucet | Delta | 561-SS MPU-DST | Compel Collection, ADA compliant |
| P7 | Shower Faucet | Delta | T14261SS (T14061SS) | Compel Collection, (T14061SS) for ADA shower |
| P8 | Shower Handset | Delta | 50570SS, 56302SS, 59424SS24PK, 40024SS | ADA Compliant |
| P9 | Shower Valve | Delta | R10000-UNWS | |
| | | | | |

Cut Sheets for TAG items in both schedules included in the Project Specification Booklet