

Chamberlin Architects, P.C.  
437 Main Street  
Grand Junction, CO 81501

## ADDENDUM #4

**Western Slope Food Bank of the Rockies**  
2294 Tall Grass Drive

**Bid Package #3 - Foundations**

Architect's Project No. 2108

August 4, 2021

The original Drawings dated on 6/15/22, for the project noted above are amended as noted in this Addendum. This Addendum may include revised Drawings that are to be inserted in the correct sequence in the Construction Issue. All bidders are required to include the items listed in the Addendum as part of their bid. This Addendum consists of **one (1)** page plus attachments.

Drawing changes are clouded.

Text deleted from the project manual by this addendum is indicated by Strikethrough (~~example~~). New text included in the Project manual is indicated in double underline typeface (example).

*This addendum is issued to correct some code data which had not been updated.*

ITEM NO.                      DESCRIPTION

DRAWINGS

ADD4-1              Sheet A002 Code Checklist & Life Safety Plan: Delete sheet and replace with attached reissued sheet A002.

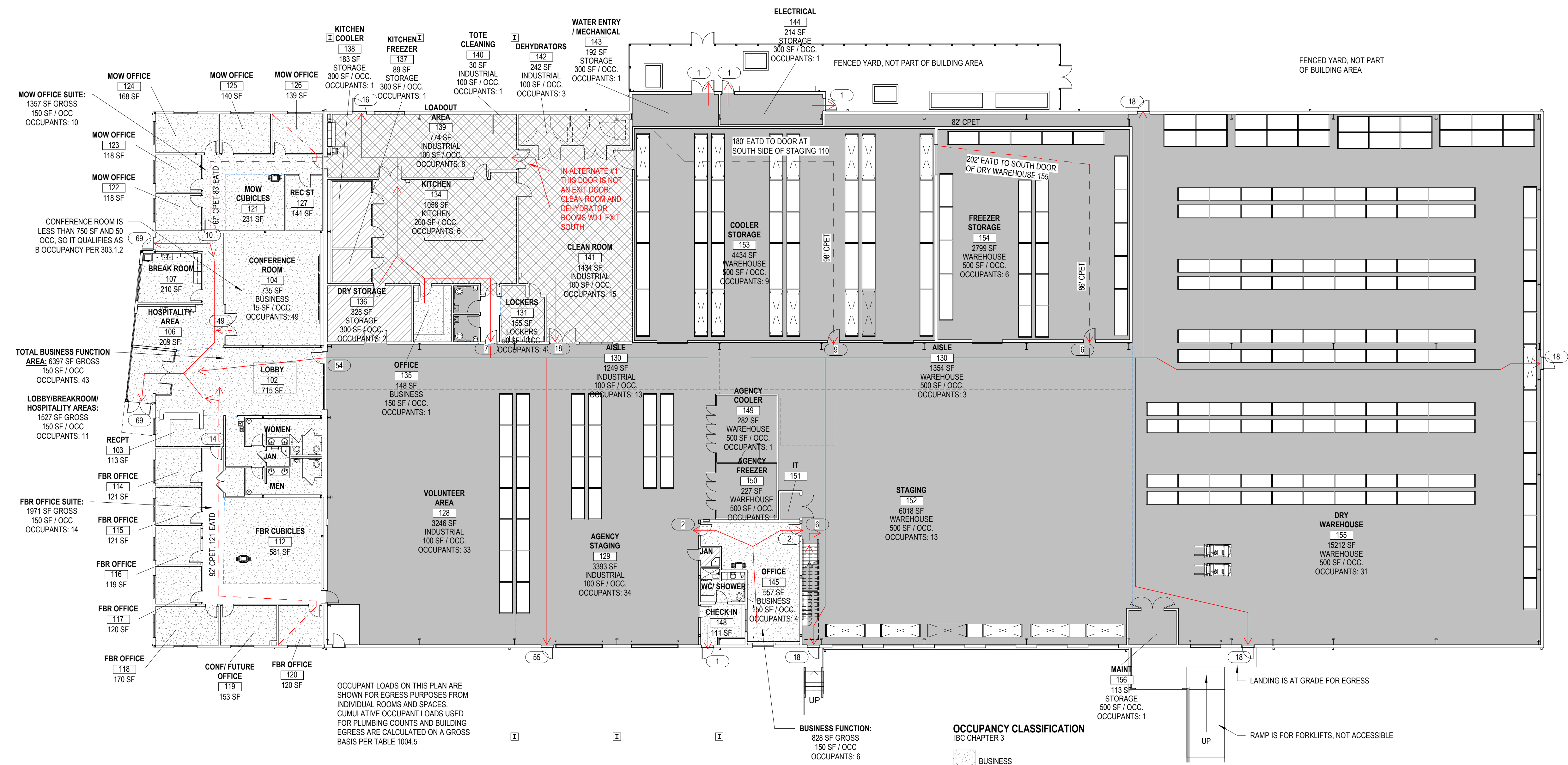
END OF ADDENDUM 4

---

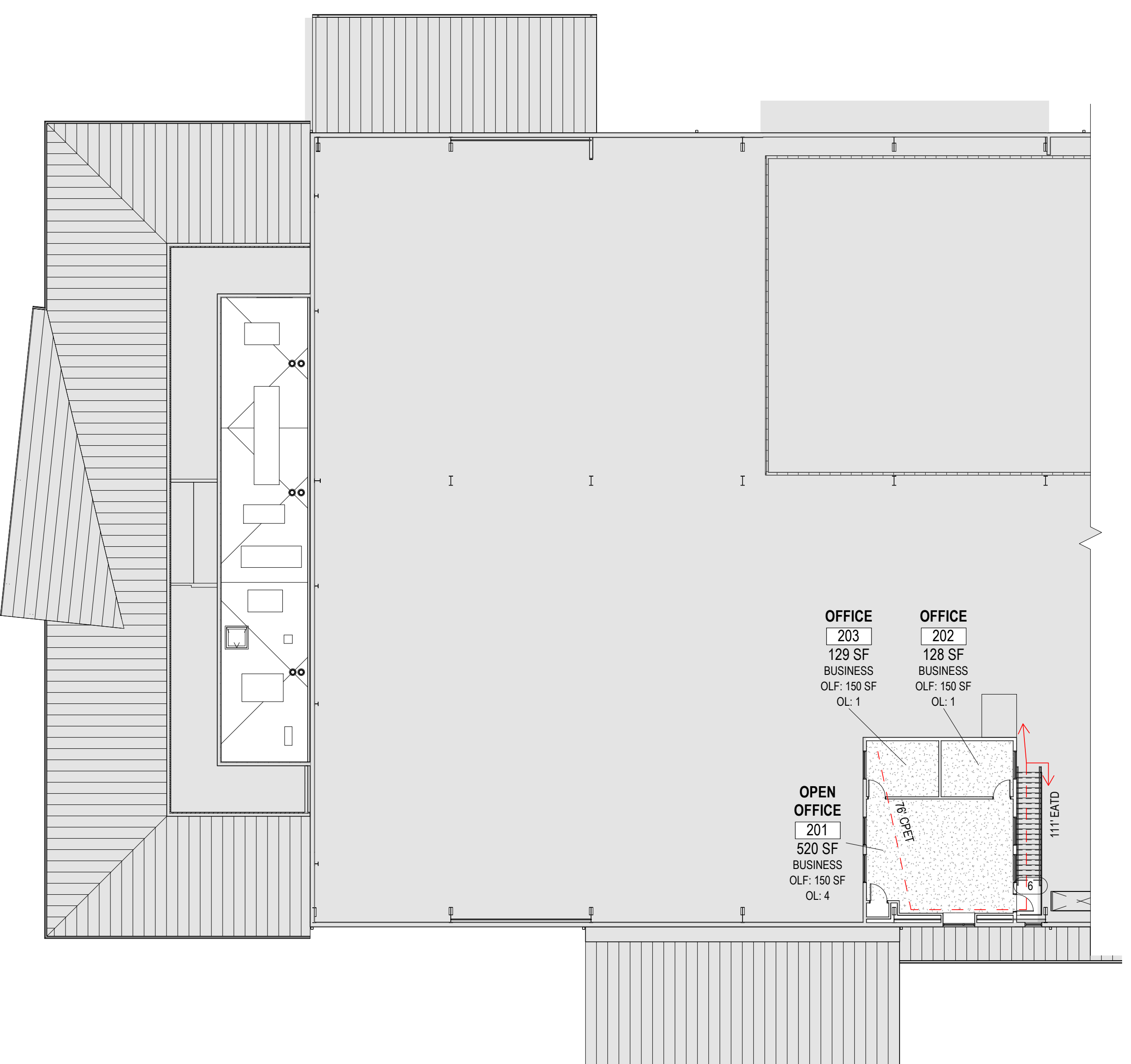
ARCHITECT:      Chamberlin Architects, P.C.

BY:                      Eric Mendell, AIA

---



1 MAIN FLOOR - LIFE SAFETY PLAN  
A002



2 SECOND FLOOR - LIFE SAFETY PLAN  
A002

**OCCUPANCY CLASSIFICATION**  
IBC CHAPTER 3

- BUSINESS
- F-1
- F-1, ACCESSORY STORAGE
- S-1 MOST OR ALL OF THE SPACE IS S-2 LOW HAZARD STORAGE; S-1 MODERATE HAZARD STORAGE IS USED SINCE IT IS GENERALLY MORE RESTRICTIVE IN CASE HIGHER HAZARD MATERIALS ARE STORED

**LIFE SAFETY LEGEND**

- 56'-0" EATD → EXIT ACCESS TRAVEL DISTANCE (EATD)
- 56'-0" CPET → COMMON PATH OF EGRESS TRAVEL (CPET)
- → BOUNDARY OF ROOM AREA

**STAGING**

- 110 → FUNCTION OF SPACE, TABLE 1004.5
- 6250 SF → OCCUPANT LOAD FACTOR, TABLE 1004.5
- 500 SF / OCC → OCCUPANT LOAD OF SPACE
- 13 → OCCUPANT LOAD AT EGRESS COMPONENT (NOT CUMULATIVE)

**CODE CHECKLIST**

**CODES IN USE:**

- 2018 INTERNATIONAL BUILDING CODE (IBC)
- 2018 INTERNATIONAL MECHANICAL CODE (IMC)
- 2009 INTERNATIONAL ENERGY CONSERVATION CODE (IECC)
- 2018 INTERNATIONAL PLUMBING CODE (IPC)
- 2018 INTERNATIONAL FUEL GAS CODE (IFGC)
- 2021 NATIONAL ELECTRICAL CODE (NEC)

**USE AND OCCUPANCY CLASSIFICATION, CHAPTER 3**

**TYPE OF OCCUPANCY**

BUSINESS, B: OFFICE AREA SINCE CONFERENCE, HOSPITALITY AREA AND LOBBY WAITING AREAS ARE EACH LESS THAN 750 SF OR 50 OCCUPANTS. THESE AREAS ARE CONSIDERED GROUP B PER SECTION 303.1.2

FACTORY F-1: FOOD PROCESSING AND COMMERCIAL KITCHENS NOT ASSOCIATED WITH RESTAURANTS OR SIMILAR AND MORE THAN 2,500 SF

STORAGE S1, MODERATE-HAZARD STORAGE: DEPENDING ON COMBUSTIBILITY OF PRODUCTS OR PACKAGING

STORAGE S-2, LOW-HAZARD STORAGE: INCLUDES FOOD PRODUCTS AND FOODS IN NONCOMBUSTIBLE CONTAINERS, FROZEN FOODS. MOST OR ALL STORAGE WILL FALL UNDER THIS CATEGORY, BUT S-1 IS USED SINCE IT IS GENERALLY MORE RESTRICTIVE

**GENERAL BUILDING HEIGHTS AND AREAS, CHAPTER 5**

**BUILDING AREA:**

- FIRE FLOW CALCULATION AREA: 51,559
- MAIN LEVEL BUILDING AREA: 51,559
- ROOF OVERHANGS: 1,654 + 1,383 + 1,230 + 52 = 3,709
- BUILDING AREA, CURRENT MAIN LEVEL: 55,268 SF
- 2<sup>ND</sup> FLOOR OFFICES: 836
- TOTAL FIRE AREA: 56,103 SF
- FUTURE EXPANSION: 15,000
- TOTAL FIRE AREA, FUTURE: 71,123 SF

**ALLOWABLE AREA:** UNLIMITED

ALLOWED PER 507.5 FOR TWO STORY BUILDING, GROUP B, F, M OR S WITH AUTOMATIC SPRINKLER SYSTEM WHEN THE BUILDING IS SURROUNDED BY PUBLIC WAYS OR YARDS NOT LESS THAN 60' WIDE.

**NUMBER OF STORIES:** 2 (SINGLE STORY EXCEPT DOCK OFFICE AREA)

**ALLOWABLE STORIES:** 2 (PER 507.5)

**BUILDING HEIGHT:** 39'-11" FROM MAIN FLOOR TO BUILDING PEAK  
29'-10" AVERAGE GRADE PLANE TO ROOF EAVE, USED FOR FIRE TRUCK ACCESS REQUIREMENTS

**ALLOWABLE HEIGHT:** 60 FT

**OCCUPANCY SEPARATION:** NON-SEPARATED  
PER 508.2 THE MOST RESTRICTIVE OCCUPANCY GROUPS ARE USED TO DETERMINE ALLOWABLE BUILDING HEIGHT AND AREA

**INCIDENTAL USES:** NONE

**TYPES OF CONSTRUCTION, CHAPTER 6**

**TYPE OF CONSTRUCTION:** Type V-B

STRUCTURAL ELEMENTS, EXTERIOR WALLS AND INTERIOR WALLS ARE OF ANY MATERIALS PERMITTED BY CODE

**BUILDING ELEMENT RATINGS, TABLE 601**

- PRIMARY STRUCTURAL FRAME: 0
- EXTERIOR BEARING WALLS: 0
- INTERIOR BEARING WALLS: 0
- NONBEARING WALLS & PARTITIONS (EXTERIOR): 0
- NONBEARING WALLS & PARTITIONS (INTERIOR): 0
- FLOOR CONSTRUCTION: 0
- ROOF CONSTRUCTION: 0

**MEANS OF EGRESS, CHAPTER 10**

OCCUPANT LOAD	FUNCTION	AREA (GROSS)	OCC LOAD FACTOR	OCCUPANT LOAD
BUSINESS		8,036 SF	150 GROSS	54
KITCHEN		1,053 SF	200 GROSS	6
INDUSTRIAL		10,741 SF	100 GROSS	108
WAREHOUSE		30,912 SF	500 GROSS	62
STORAGE		907 SF	300 GROSS	4
<b>TOTAL</b>				<b>234</b>

TABLE 1006.2.1 (SPACES WITH ONE EXIT OR ACCESS DOORWAY) MAX COMMON PATH OF EGRESS

OCCUPANCY	MAX OCC LOAD	TRAVEL (W/ SPRINKLERS)
A	49	75 FT
B	49	100 FT
F	49	100 FT
S	29	100 FT

TABLE 1017.2 (EXIT ACCESS TRAVEL DISTANCE)

- GROUPS A, F-1, S-1: 250 FEET W/ SPRINKLER SYSTEM
- GROUP B: 300 FEET W/ SPRINKLER SYSTEM
- GROUP S-2: 400 FEET W/ SPRINKLER SYSTEM

**ACCESSIBILITY, CHAPTER 11**

1104.4 MULTISTORY BUILDINGS AND FACILITIES: SECOND FLOOR DOES NOT REQUIRE ELEVATOR PER EXCEPTION 1: AN ACCESSIBLE ROUTE IS NOT REQUIRED TO STORIES AND MEZZANINES OF NOT MORE THAN 3,000 SF.

**PLUMBING SYSTEMS, CHAPTER 29**

CLASSIFICATION	OCC LOAD / GENDER	WC	LAV	FIXTURES PER EACH GENDER
BUSINESS:	27 M / 27 W	@1/25	1/40	1.08 WC / 0.68 LAV
KITCHEN:	3 M / 3 W			
INDUSTRIAL:	54M / 54W			
WAREHOUSE:	31M / 31W			
STORAGE:	3 M / 2 W			
<b>TOTAL FACTORY / INDUSTRIAL AND STORAGE:</b>	90 M / 90W	@1/100, 1/100	0.90 WC / 0.90 LAV	
<b>TOTAL REQUIRED</b>			1.98 = 2 WC / 1.58 = 2 LAV	
<b>TOTAL PROVIDED</b>			3 WC / 3 LAV	
<b>DRINKING FOUNTAINS</b>				
BUSINESS:	54 @1/100 =		0.540	
FACTORY / INDUSTRIAL:	176 @1/400 =		0.440	
STORAGE:	4 @1/1,000 =		0.004	
<b>TOTAL REQUIRED</b>			0.984 = 1	
<b>TOTAL PROVIDED</b>			2 (1 HIGH / 1 LOW)	

SERVICE SINK: 1 REQUIRED / 2 PROVIDED

**2009 INTERNATIONAL ENERGY CONSERVATION CODE REQUIREMENTS**

**BUILDING ENVELOPE REQUIREMENTS - OPAQUE ASSEMBLIES (TABLE 502.2.1)**

ROOFS, INSULATION ENTIRELY ABOVE DECK: U-0.048 OR R-20 CONTINUOUS INSULATION

ROOFS, METAL BUILDINGS: U-0.055 OR R-13 FACED FIBERGLASS BATTS DRAPED OVER PURLINS + R-13 UNFACED FIBERGLASS BATTS PARALLEL TO PURLINS + R-3.5 THERMAL SPACER ABOVE THE PURLINS.

ROOFS, ATTIC OR OTHER: U-0.027 OR R-38

WALLS, METAL BUILDINGS: U-0.069 OR R-13 FACED FIBERGLASS INSULATION BATTS PERPENDICULAR AND COMPRESSED BETWEEN METAL WALL PANELS AND THE STEEL FRAMING + R-5.6 CONTINUOUS RIGID INSULATION BETWEEN THE METAL WALL PANELS AND STEEL FRAMING OR ON THE INTERIOR OF THE STEEL FRAMING.

WALLS, METAL FRAMED: U-0.064 OR R-13 + R-7.5 CONTINUOUS INSULATION

WALLS, WOOD FRAMED: U-0.064 OR R-13 + R-3.8 CONTINUOUS INSULATION, OR R-20.

FLOORS, SLABS ON GRADE, UNHEATED: NO REQUIREMENT  
R-10 CONTINUOUS INSULATION PROVIDED FROM BOTTOM OF SLAB EXTENDING DOWN 2"

**BUILDING ENVELOPE REQUIREMENTS - FENESTRATION (TABLE 502.3)**

METAL FRAMED FENESTRATION, MAXIMUM U FACTORS & SHGC

- STOREFRONT: U-0.45 / 0.40 SHGC
- ENTRANCE DOOR: U-0.80 / 0.40 SHGC
- ALL OTHER WINDOWS AND DOORS: U-0.55 / 0.40 SHGC

SKYLIGHTS (3% MAXIMUM): U-0.60 / 0.40 SHGC

**FOOD BANK OF THE ROCKIES**

698 LONG ACRE DRIVE  
GRAND JUNCTION, COLORADO

**CODE CHECKLIST & LIFE SAFETY PLAN**

NO: \_\_\_\_\_ ISSUED FOR: \_\_\_\_\_ DATE: \_\_\_\_\_

ADDENDUM # \_\_\_\_\_ Date 3

**BID PACKAGE #3, FOUNDATIONS**

DATE: **06/15/21** SHEET NO: \_\_\_\_\_

PROJECT NO: **A002**